



Lexicomp on mobile

Apps for Smartphones and Tablets

Your facility now has access to Lexicomp on mobile!

Lexicomp® mobile apps from Wolters Kluwer provide convenient, mobile access to our continually updated drug information – where and when it's needed most!

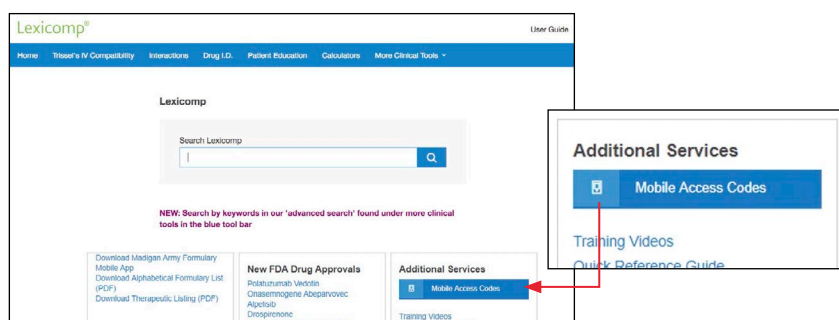
Features:

- Content to help you diagnose, find treatment options, and identify drug interactions in seconds
- View detailed information including charts, tables, images, and more
- Cross-database searching with quick-jump functionality
- Easy updates

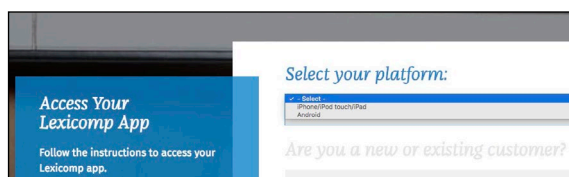


You have access to: Lexi-SELECT

- 1 Log onto <https://online.lexi.com> or click on the Mobile Access Codes link at the bottom right of your Lexicomp splash page



- 2 From the drop-down menu, you will need to select your device type

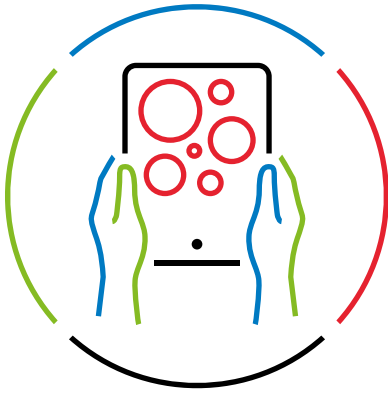


Available on:

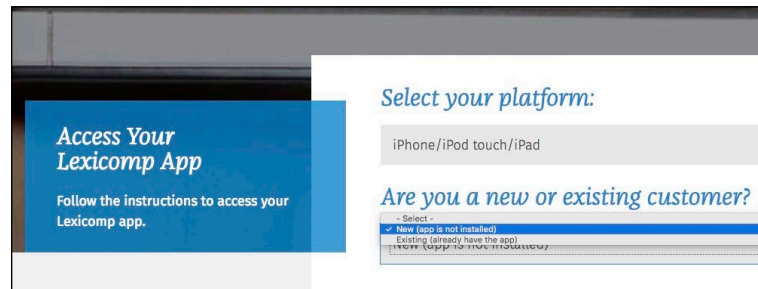


Apple, the Apple logo, iPhone, and iPad are trademarks of Apple Inc., registered in the U.S. and other countries and regions. App Store is a service mark of Apple Inc.

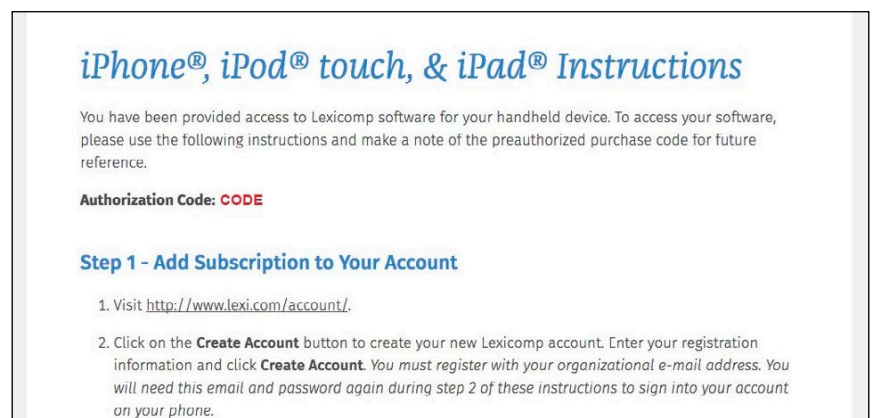
Google Play and the Google Play logo are trademarks of Google LLC.



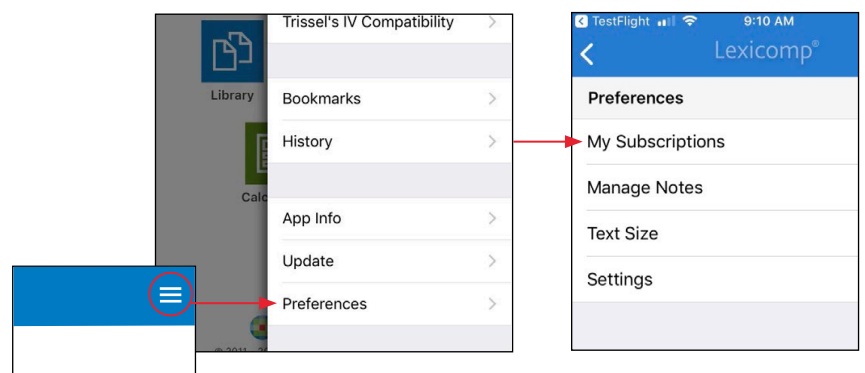
- 3 From the next drop-down menu, you will need to select if you are a new or an existing customer



- 4 You will then be taken to a screen showing your subscription code and device code and device-specific installation instructions



- 5 Once your Lexicomp mobile app installation is complete, open the mobile app to begin use. To confirm your subscriptions, tap the menu in the upper right, tap on "Preferences" and then tap "My Subscriptions"



Note: Lexicomp mobile apps require a strong cellular or Wi-Fi signal for installation. The application may transfer a significant amount of data, which could result in charges from your carrier. We recommend you utilize an unlimited data plan or connect to a Wi-Fi network when installing or updating this application. Please contact your carrier for assistance with your data plan or with utilizing a Wi-Fi connection.