

# **Blind Rehabilitation (BR) Release 5.1.4**

## **Release Notes**



**July 2023**

**Document Version 1.0**

**Department of Veterans Affairs (VA)  
Office of Information and Technology (OI&T)**

## Revision History

Date	Version	Description	Author
07/2023	1.0	Initial Version	Booz Allen Hamilton

## Table of Contents

<b>1</b>	<b>Purpose.....</b>	<b>1</b>
1.1	General Updates .....	1
1.1.1	Error Messages .....	1
1.1.2	Print VIST Roster Sorts .....	2
1.1.3	VIST Roster Summary Report Start Date.....	3
1.1.4	Edit Blind Patient Date Box.....	3
1.1.5	VIST Annual Review Page.....	4
<b>2</b>	<b>JAWS Supported Versions.....</b>	<b>5</b>

## List of Figures

Figure 1:	Eye Exam Missing Mandatory Field(s) .....	1
Figure 2:	Date Format Error.....	2
Figure 3:	Data-Only Export .....	2
Figure 4:	Options for Data-Only Export.....	3
Figure 5:	Default Report Start Date .....	3
Figure 6:	Edit Blind Patient Date Box.....	4
Figure 7:	VIST Annual Review Page .....	4
Figure 8:	Supported JAWS Versions .....	5

# 1 Purpose

The Blind Rehabilitation (BR) team has made significant updates to the BR application. This document will summarize the updates made for release 5.1.4 and provide brief instructional text for specific updates.

## 1.1 General Updates

The 5.1.4 release includes Section 508 updates that improve Job Access With Speech (JAWS) reading capabilities. These updates now allow JAWS to read the status notification dialog when a user selects the **Select** button for a sensitive patient. They also allow JAWS to announce the completion of a patient search. Additionally, JAWS will now be able to assist users in differentiating between patients with identical names when utilizing the **Select** buttons in the search results table and the **Existing Referral Edit** buttons.

Release 5.1.4 also includes updates to error messages that add specificity to the respective errors. The **Eye Exam** missing mandatory fields error message will now specify that the user must enter a valid exam date. The error message for date format now better specifies which field(s) are failing validation. This added specificity will now give more clarity for users utilizing JAWS.

This release will also allow users to perform data-only exports for the reports in the **Print VIST Roster Sorts** menu. The **VIST Roster Summary** report start date will now always default as the first day of the current fiscal year. The **Edit Blind Patient** date box is now labeled “Enrollment Date (MM/DD/YYYY).” Furthermore, the acronym “VIST” on the **VIST Annual Review** page has been corrected to be read in all caps.

In addition to the aforementioned updates, various potential vulnerabilities identified in the security scan have been remediated.

### 1.1.1 Error Messages

The screenshot shows the 'Edit Eye Exam' form with a yellow error banner at the top. The banner contains a red 'X' icon and the following text: 'Please enter an exam date in the format MM/dd/yyyy', 'Performed By VA is required', 'Visual Acuity Right is required', 'Visual Acuity Left is required', 'Visual Field Right is required', 'Visual Field Left is required', and 'Legal Blindness is required'. Below the banner, the form fields are as follows: '\*Institution:' with a dropdown menu; '\*Exam Date (MM/DD/YYYY):' with a text input field and a calendar icon; '\*Performed by VA?' with a dropdown menu; '\*Visual Acuity Right:' with a dropdown menu; '\*Visual Acuity Left:' with a dropdown menu; '\*Visual Field Right:' with a dropdown menu; '\*Visual Field Left:' with a dropdown menu; '\*Legal Blindness/ Visual Impairment Status (Primary):' with a dropdown menu; and 'Eye Exam Notes (320 Characters maximum):' with a text area. At the bottom right, there are two buttons: 'Add Eye Exam' and 'Done'.

Figure 1: Eye Exam Missing Mandatory Field(s)

\* - Field(s) identified with the asterisk are mandatory.

⊗ Please enter 4 digits only (YYYY) for vision loss onset year.

1 Basic Information	2 Ocular Health	3 Patient History	4 Financial / Benefits	5 Domestic Information
6 Living Arrangements	7 Other Health	8 Medical Treatment	9 Rehabilitation Experience	10 Assessment Questions

**Ocular Health Details**

\* **Primary Cause of Vision Loss:**  
 Paresis of accommodation, right eye H52.521

**Secondary Cause of Vision Loss:**

**Other Causes of Vision Loss:**  
 Currently selected other causes of vision loss

Description ↑↓
No other causes of vision loss found

Add

Vision Loss Onset Year (YYYY):  
 22

Figure 2: Date Format Error

## 1.1.2 Print VIST Roster Sorts

Users can now perform data-only exports for the reports in the **Print VIST Roster Sorts** menu.

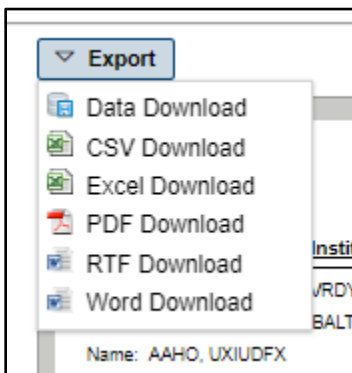


Figure 3: Data-Only Export

The data download will NOT include the cell headers as it does with the other exported formats. Therefore, the data download will include the same information whether the **Accessible** box is checked or not.

☒ Include Deceased Patients?  
☒ Accessible?

**Figure 4: Options for Data-Only Export**

Below are examples of column headers that may appear in an exported excel sheet when a user selects the “Include Deceased Patients?” and “Accessible?” options.

- TRUE = The box to include deceased patients is checked, but the patient for that row is not deceased
- FALSE = User did not check the box to include deceased patients
- Date = Date of death if you chose to include deceased patients

### 1.1.3 VIST Roster Summary Report Start Date

The default start date for the **VIST Roster Summary** report will be the first day of the current fiscal year.

**VIST Roster Summary - Report Criteria**

Enter the report criteria and press submit.  
 \* - Fields identified with the asterisk are mandatory

\* Institutions:  
 BALTIMORE CBOC (512GD)  
 BALTIMORE MD VAMC (512)

\* Start Date (MM/DD/YYYY): 10/01/2022

\* End Date (MM/DD/YYYY): 07/19/2023

☐ Accessible?

**Figure 5: Default Report Start Date**

### 1.1.4 Edit Blind Patient Date Box

The **Edit Blind Patient** date box is now labeled “Enrollment Date (MM/DD/YYYY).”

Edit Blind Patient		
<b>Current Patient</b>		
Name:	Date of Birth (Age):	Gender:
	1987 (36)	Female
Social Security Number:	Patient Type:	Patient Status:
	VIST	ACTIVE
Roster Institutions:		
DaytShr (984)		
<b>Basic Information</b>		
* - Field(s) identified with the asterisk are mandatory.		
* Institution:	<input type="text"/>	
* Tracked By:	<input type="text"/>	
* Enrollment Date (MM/DD/YYYY):	<input type="text" value="07/19/2023"/> <input type="button" value="📅"/>	
* VIST Eligible:	<input type="text" value="NO - OTHER"/>	
* Referral Source:	<input type="text" value="VA STAFF"/>	
* Major Activity:	<input type="text" value="EMP FOR PAY"/>	

Figure 6: Edit Blind Patient Date Box

### 1.1.5 VIST Annual Review Page

The **VIST Annual Review Page** has been corrected to show “VIST” in all caps.

VIST Annual Review	
<b>Patient Already Selected</b>	
Press OK to use the selected patient; otherwise, enter search criteria to search for a new patient	
<b>Name:</b> TEST, BRDEVFIFTY SEVEN <b>Date of Birth:</b> <b>Social Security Number:</b>	
<input type="button" value="OK"/>	

Figure 7: VIST Annual Review Page

## 2 JAWS Supported Versions

The supported JAWS versions can be found at the following link: REDACTED

Figure 1 depicts the supported JAWS versions in a table format.

<Past	CY2022				CY2023				CY2024			
Release	Q1	Q2	Q3	Q4	Q1	Q2	Q3	Q4	Q1	Q2	Q3	Q4
10.0	Unapproved	Unapproved	Unapproved	Unapproved	Unapproved	Unapproved	Unapproved	Unapproved	Unapproved	Unapproved	Unapproved	Unapproved
11.0	Unapproved	Unapproved	Unapproved	Unapproved	Unapproved	Unapproved	Unapproved	Unapproved	Unapproved	Unapproved	Unapproved	Unapproved
12.0	Unapproved	Unapproved	Unapproved	Unapproved	Unapproved	Unapproved	Unapproved	Unapproved	Unapproved	Unapproved	Unapproved	Unapproved
15.0	Unapproved	Unapproved	Unapproved	Unapproved	Unapproved	Unapproved	Unapproved	Unapproved	Unapproved	Unapproved	Unapproved	Unapproved
16.0	Unapproved	Unapproved	Unapproved	Unapproved	Unapproved	Unapproved	Unapproved	Unapproved	Unapproved	Unapproved	Unapproved	Unapproved
17.0	Unapproved	Unapproved	Unapproved	Unapproved	Unapproved	Unapproved	Unapproved	Unapproved	Unapproved	Unapproved	Unapproved	Unapproved
18.x	Divest [2, 4, 6, 7]	Divest [4, 6, 7, 8, 9]	Unapproved	Unapproved	Unapproved	Unapproved	Unapproved	Unapproved	Unapproved	Unapproved	Unapproved	Unapproved
2018.x	Divest [2, 4, 6, 7]	Divest [4, 6, 7, 8, 9]	Unapproved	Unapproved	Unapproved	Unapproved	Unapproved	Unapproved	Unapproved	Unapproved	Unapproved	Unapproved
2019.x	Approved w/Constraints [2, 4, 6, 7]	Divest [4, 6, 7, 8, 9]	Divest [4, 6, 7, 8, 9]	Unapproved	Unapproved	Unapproved	Unapproved	Unapproved	Unapproved	Unapproved	Unapproved	Unapproved
2020.x	Approved w/Constraints [2, 4, 6, 7]	Approved w/Constraints [4, 6, 7, 8, 9]	Approved w/Constraints [4, 6, 7, 8, 9]	Approved w/Constraints [6, 7, 8, 9, 10]	Approved w/Constraints [6, 7, 8, 9, 10]	Approved w/Constraints [6, 7, 8, 9, 10]	Approved w/Constraints [6, 7, 8, 9, 10]	Approved w/Constraints [6, 7, 8, 9, 10]	Approved w/Constraints [6, 7, 8, 9, 10]	Approved w/Constraints [6, 7, 8, 9, 10]	Approved w/Constraints [6, 7, 8, 9, 10]	Approved w/Constraints [6, 7, 8, 9, 10]
2021.x	Approved w/Constraints [2, 4, 6, 7]	Approved w/Constraints [4, 6, 7, 8, 9]	Approved w/Constraints [4, 6, 7, 8, 9]	Approved w/Constraints [6, 7, 8, 9, 10]	Approved w/Constraints [6, 7, 8, 9, 10]	Approved w/Constraints [6, 7, 8, 9, 10]	Approved w/Constraints [6, 7, 8, 9, 10]	Approved w/Constraints [6, 7, 8, 9, 10]	Approved w/Constraints [6, 7, 8, 9, 10]	Approved w/Constraints [6, 7, 8, 9, 10]	Approved w/Constraints [6, 7, 8, 9, 10]	Approved w/Constraints [6, 7, 8, 9, 10]
2022.x	Approved w/Constraints [2, 4, 6, 7]	Approved w/Constraints [4, 6, 7, 8, 9]	Approved w/Constraints [4, 6, 7, 8, 9]	Approved w/Constraints [6, 7, 8, 9, 10]	Approved w/Constraints [6, 7, 8, 9, 10]	Approved w/Constraints [6, 7, 8, 9, 10]	Approved w/Constraints [6, 7, 8, 9, 10]	Approved w/Constraints [6, 7, 8, 9, 10]	Approved w/Constraints [6, 7, 8, 9, 10]	Approved w/Constraints [6, 7, 8, 9, 10]	Approved w/Constraints [6, 7, 8, 9, 10]	Approved w/Constraints [6, 7, 8, 9, 10]
2023.x	Unapproved	Unapproved	Unapproved	Approved w/Constraints [6, 7, 8, 9, 10]	Approved w/Constraints [6, 7, 8, 9, 10]	Approved w/Constraints [6, 7, 8, 9, 10]	Approved w/Constraints [6, 7, 8, 9, 10]	Approved w/Constraints [6, 7, 8, 9, 10]	Approved w/Constraints [6, 7, 8, 9, 10]	Approved w/Constraints [6, 7, 8, 9, 10]	Approved w/Constraints [6, 7, 8, 9, 10]	Approved w/Constraints [6, 7, 8, 9, 10]

Figure 8: Supported JAWS Versions