

## Museum Hours

- Thursdays and first and third Saturdays of the month, 9 a.m. to 1 p.m.
- Closed on all national holidays.
- Closed throughout the winter, from December to February.

Since the museum is staffed by community volunteers, we encourage you to confirm the hours of operation before scheduling your visit by calling **(410) 642-2411, ext. 26071**.

The museum is handicap accessible, with a wheelchair ramp at the entrance and an elevator to all three floors located inside the Grist Mill.

## School and Group Tours

Private tours are available for school classes and community groups. To schedule a group tour, call **(410) 642-2411, ext. 26071**, or send an e-mail to: **perrypointveteransmuseum@va.gov**.

Group tours require at least 10 people. If your group is smaller than 10, please visit during our normal operating hours.

## Admission Fee

Admission to the museum is free.

## Directions

Take I-95 to exit 93 for Route 222 east toward Perryville. At the end of the ramp, turn left onto Route 222 and proceed for about two miles to the end of the road and turn left onto Broad Street. Continue for half a mile and turn right onto Ikea Way. In a quarter mile, turn right onto Marion Tapp Parkway. Follow the road until you come to the gated entrance of the medical center. After passing the medical center's entrance gate, continue onto 5th Street. After a quarter mile the road splits and you will bear left to continue on 5th Street to Avenue D. Turn left onto Avenue D, then turn right onto 6th Street. Follow Sixth Street to the end and turn left onto Avenue A. The museum will be on your right shortly after turning onto Avenue A.



## Volunteer Opportunities

The museum is staffed by trained and dedicated community volunteers. To learn more about volunteer opportunities at the museum or throughout the Perry Point VA Medical Center, call Voluntary Service at **410-642-1038**.

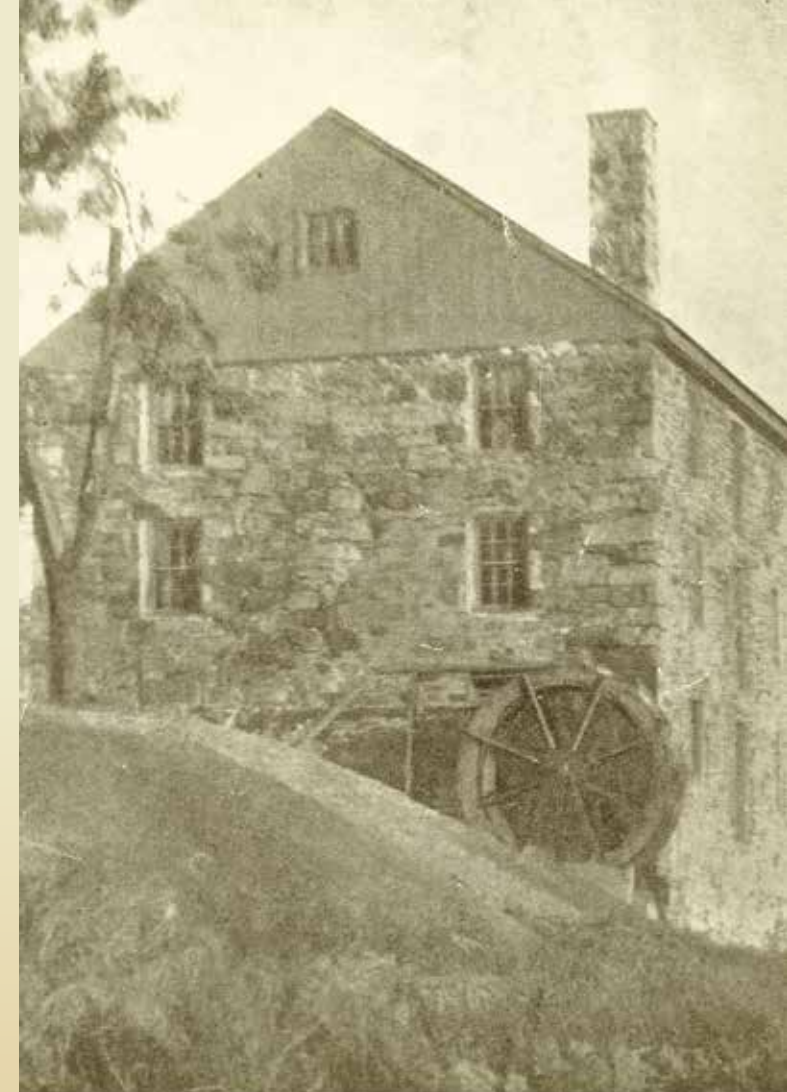
Interested in learning more about the history of this area? We suggest you visit the historic **Rodgers Tavern Museum** and **Perryville Railway Museum**, which are both located on Broad Street in the Town of Perryville (hours vary).

VA Maryland Health Care System  
Perry Point VA Medical Center  
Office of Public & Community Relations  
Perry Point, MD 21902  
**Phone: 410-642-2411, ext. 26071**

Perry Point Veterans Museum Email:  
**perrypointveteransmuseum@va.gov**

Perry Point Veterans Museum Website:  
**va.gov/maryland-health-care/programs/perry-point-veterans-museum-at-the-grist-mill**

VA Maryland Health Care System Website:  
**maryland.va.gov**



# Perry Point Veterans Museum at the Grist Mill

VA Maryland Health Care System  
Perry Point VA Medical Center



## Welcome

Visitors to the Perry Point Veterans Museum at the Grist Mill will have an opportunity to explore the rich history of the peninsula that was once used as the hunting grounds by the Susquehannock Indians, served as a large estate for early settlers, was occupied by the Union Government during the Civil War, provided support to the U.S. military during World War I, and was later dedicated to delivering health care to Maryland's Veterans.



## History of the Grist Mill at Perry Point

The Grist Mill was constructed around 1750 as part of a large settlement on the peninsula, along with the Perry Point Mansion House. The water wheel on the side of the mill was originally powered by a local stream to turn the grinding equipment to make flour. The Grist Mill is one of the two oldest known structures throughout the Department of Veterans Affairs nationwide. In 1975, the historic significance of the Grist Mill and the Mansion House was recognized when the two structures were placed on the National Register of Historic Places by the U.S. Department of the Interior.

## Self-Guided Tour

The Veterans Museum covers more than four centuries of history along the Perry Point peninsula. You are encouraged to begin your visit in the basement of the Grist Mill, where the history of Perry Point begins. You can then take the stairs or the elevator up to the first and second floors and progress through the history of the peninsula as you ascend up through each level.

### **BASEMENT:** Perry Point – The Early Years

#### **1500's -1600's**

– Susquehannock Indians inhabit the peninsula

#### **1658 -1898**

– Perry Point land ownership

#### **1750**

– Construction of the Mansion House and Grist Mill

#### **1861**

– Occupation by the Union Government during the Civil War



Please make sure to stop by the first floor of the museum to watch a video about the complete history of the Perry Point peninsula.

### **FIRST FLOOR:** The Atlas Powder Company at Perry Point – World War I

#### **1918**

- U.S. Government purchases Perry Point
- Perry Point leased to Atlas Powder Company
- Construction of the Ammonium Nitrate Plant and Village Area



### **SECOND FLOOR:** Health Care for Veterans at Perry Point

#### **1919**

– Perry Point turned over to U.S. Public Health Service

#### **1922**

– U.S. Veterans Bureau established

#### **1923**

– Name change to Federal Park

#### **1924**

– Perry Point expands to meet growing needs of Veteran population

#### **1930**

– Establishment of the Veterans Administration

#### **1930's -1980's**

– Construction of additional hospital and administrative buildings

