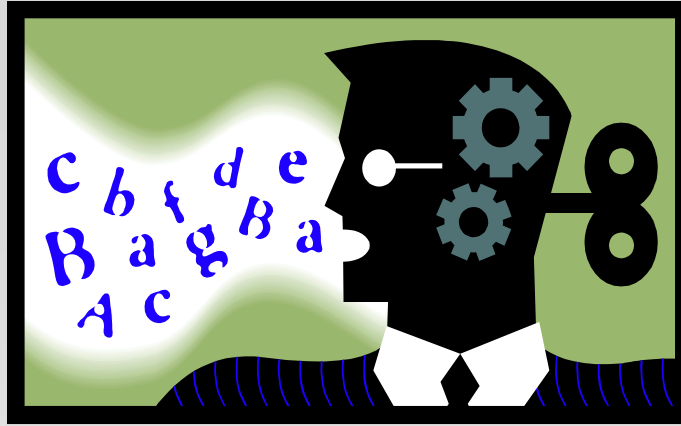


# Research Participants with Aphasia Needed for a study about Communication



- **Study participation:**
  - One screening visit of 2-2.5 hours
  - It takes about 2.5-4.5 hours to complete the study. The study may be broken up into multiple visits.
  - Study involves completing speech/language tests and naming pictures
  - Pays \$50 at completion of study
- **Eligibility:**
  - Men and women over 18 with aphasia (difficulty communicating) caused by a left hemisphere stroke
  - At least 4 months post onset of aphasia
  - No history of right hemisphere stroke; progressive neurological disease; psychiatric disorders other than anxiety, depression or PTSD; chronic health conditions that impact cognition (e.g. kidney or liver failure); other head trauma with loss of cognition; or prior speech-language disorder
  - Native English speakers who were literate before stroke

## **Interested?** Contact:

Minneapolis VA Medical Center  
Speech Pathology Research Coordinator  
612-467-5009

Principal Investigator: Ann St. Jacque, MA, CCC-SLP

Minneapolis VA Health Care System IRB (Institutional Review Board)

Effective Date: February 22, 2022

Version date: 2-15-2022