



# RESOURCE PACKET FOR INELIGIBLE VETERANS

- ELIGIBILITY REQUIREMENTS FOR DENTAL BENEFITS
- INSURANCE OPTIONS FOR VETERANS
- LOW COST COMMUNITY CLINICS
- COUNTY VETERAN SERVICE OFFICERS (CVSO)
- EMERGENCY DENTAL CLINIC CONTACTS



# Dental Benefits for Veterans

Dental benefits are provided by the Department of Veterans Affairs (VA) according to law. In some instances, VA is authorized to provide extensive dental care, while in other cases treatment may be limited. This Fact Sheet describes dental eligibility criteria and contains information to assist Veterans in understanding their eligibility for VA dental care.

## Outpatient Dental Program

The eligibility for outpatient dental care is not the same as for most other VA medical benefits and is categorized into classes. If you are eligible for VA dental care through Class I, IIA, IIC, or IV you are eligible for any necessary dental care to maintain or restore oral health and masticatory function, including repeat care. Other classes have time and/or service limitations.

If you:	You are eligible for:	Through
Have a service-connected compensable (10% or greater) dental disability or condition.	Any needed dental care	Class I
Are a former prisoner of war.	Any needed dental care.	Class IIC
Have service-connected disabilities rated 100% (total) disabling, or are unemployable and paid at the 100% rate due to service-connected conditions.	Any needed dental care. [Please note: Veterans paid at the 100% rate based on a temporary rating, such as extended hospitalization for a service-connected disability, convalescence or pre-stabilization are not eligible for comprehensive outpatient dental services based on this temporary rating].	Class IV
Request dental care within 180 days of discharge or release (under conditions other than dishonorable) from a period of active duty of 90 days or more.	One-time dental care if your DD214 certificate of discharge does not indicate that a complete dental examination and all appropriate dental treatment had been rendered prior to discharge.*	Class II

<b>If you:</b>	<b>You are eligible for:</b>	<b>Through</b>
Have a service-connected noncompensable (0%) dental condition/disability resulting from combat wounds or service trauma.	Any dental care necessary to provide and maintain a functioning dentition. A VA Regional Office Rating Decision letter (VA Form 10-7131) or the historical Dental Trauma Rating (VA Form 10-564-D) identifies the tooth/teeth/condition(s) that are trauma rated.	Class IIA
Have a dental condition clinically determined by VA to be associated with and aggravating a service-connected medical condition.	Dental care to treat the oral conditions that are determined by a VA dental professional to have a direct and material detrimental effect to your service connected medical condition.	Class III
Are actively engaged in a Title 38, USC Chapter 31 Vocational Rehabilitation and Employment Program.	Dental care to the extent necessary as determined by a VA dental professional to: <ul style="list-style-type: none"> <li>• Make possible your entrance into a rehabilitation program</li> <li>• Achieve the goals of your vocational rehabilitation program</li> <li>• Prevent interruption of your rehabilitation program</li> <li>• Hasten the return to a rehabilitation program if you are in interrupted or leave status</li> <li>• Hasten the return to a rehabilitation program of a Veteran placed in discontinued status because of illness, injury or a dental condition, or</li> <li>• Secure and adjust to employment during the period of employment assistance, or enable you to achieve maximum independence in daily living.</li> </ul>	Class V
Are receiving VA care or are scheduled for inpatient care and require dental care for a condition complicating a medical condition currently under treatment.	Dental care to treat the oral conditions that are determined by a VA dental professional to complicate your medical condition currently under treatment.	Class VI
Are enrolled in a qualifying VA sponsored homeless residential rehabilitation program for at least 60 days.	A one-time course of dental care that is determined medically necessary to relieve pain, assist you to gain employment, or treat moderate, severe, or complicated and severe gingival and periodontal conditions.	Class IIB

*\* Note: Public Law 83 enacted June 16, 1955, amended Veterans' eligibility for outpatient dental services. As a result, any Veteran who received a dental award letter from VBA dated before 1955 in which VBA determined the dental conditions to be noncompensable are no longer eligible for Class II outpatient dental treatment.*





U.S. Department of Veterans Affairs  
Veterans Health Administration

# Veterans Affairs Dental Insurance Program

Delta Dental is proud to offer valuable dental benefits to help improve the health and lives of Veterans and CHAMPVA beneficiaries through the Veterans Affairs Dental Insurance Program (VADIP).

Eligible beneficiaries include Veterans enrolled in Veterans Affairs (VA) health care and people enrolled in the VA's Civilian Health and Medical Program (CHAMPVA). Choose between three plans and enjoy access to our large, nationwide network of dentists. All three VADIP plans offer 100% coverage for in-network cleanings, exams and x-rays.

Benefits	Enhanced Plan		Comprehensive Plan		Prime Plan	
	In-Network	Out-of-Network	In-Network	Out-of-Network	In-Network	Out-of-Network
<b>Benefits available upon enrollment</b>						
<b>Diagnostic and Preventive<sup>1</sup></b> Routine cleanings, x-rays, oral exams, sealants	100%	80%	100%	80%	100%	90%
<b>Basic Restorative</b> Fillings (silver)	50%	30%	60%	40%	70%	60%
<b>Simple Extractions<sup>2,3</sup></b>	50%	30%	50%	30%	50%	40%
<b>General Services</b>	Not covered	Not covered	50%	30%	50%	40%
<b>Additional benefits available after 12 months of enrollment</b>						
<b>Major Restorative<sup>2</sup></b> Crowns	Not covered	Not covered	50%	30%	70%	60%
<b>Endodontics<sup>2</sup></b> Root canals	50%	30%	50%	30%	50%	40%
<b>Periodontics<sup>2</sup></b> Treatment for gums	50%	30%	50%	30%	50%	40%
<b>Prosthodontics<sup>2,4</sup></b> Bridges, dentures, implants	Not covered	Not covered	50%	30%	50%	40%
<b>Deductibles and maximums</b>						
<b>Deductible</b>	\$50	\$50	\$0	\$50	\$0	\$50
<b>Annual Maximum</b>	\$1,000	\$1,000	\$1,500	\$1,500	\$3,000	\$3,000

<sup>1</sup> The deductible is waived for diagnostic and preventive procedures for all plans.

<sup>2</sup> The waiting period is 12 months for major restorative (Comprehensive and Prime; Enhanced not covered), endodontics (all plans), periodontics (all plans), oral surgery<sup>4</sup> (all plans) and prosthodontics (Comprehensive and Prime; Enhanced not covered).

<sup>3</sup> Simple extractions (procedure codes D7111 and D7140) are the only covered oral surgery services under the Enhanced Plan (lifetime) and the only covered oral surgery services in the first 12 months under the Comprehensive and Prime plans.

<sup>4</sup> Per the missing tooth clause, services or treatment for the provision of an initial prosthodontic appliance (i.e. fixed bridge restoration, implants, removable partial or complete denture, etc.) when it replaces natural teeth extracted or missing, including congenital defects, prior to the effective date of coverage are not eligible for coverage.

Orthodontics (Braces) are not a covered benefit.

## Enrollment is quick and easy

Visit [deltadentalins.com/vadip](https://deltadentalins.com/vadip) and select **Enroll Now**. Be sure to enter your name exactly as it is listed in the VA system.

Don't have Internet access? Call Delta Dental at **855-460-3302** and request an enrollment application kit or simply enroll over the phone.

## Delta Dental coverage is affordable

Receive quality dental care at a price you can afford. Easily look up plan rates in your area and compare options to find the right fit for your needs. Your premium rate is based on where you live.

Region 1	Region 2	Region 3	Region 4	Region 5
Connecticut	Alabama	Illinois	Arkansas	Alaska
Delaware	Florida	Indiana	Colorado	American Samoa
Maine	Georgia	Iowa	Louisiana	Arizona
Maryland	Kentucky	Kansas	Mississippi	California
Massachusetts	Puerto Rico	Michigan	Montana	Guam
New Hampshire	South Carolina	Minnesota	Oklahoma	Hawaii
New Jersey	Tennessee	Missouri	Texas	Idaho
New York	U.S. Virgin Islands	Nebraska	Utah	Nevada
North Carolina		North Dakota	Wyoming	New Mexico
Pennsylvania		Ohio		Northern Mariana Islands
Rhode Island		South Dakota		Oregon
Vermont		Wisconsin		Washington
Virginia				
Washington D.C.				
West Virginia				

January 1, 2022-June 30, 2022

Rating Region	Veteran		CHAMPVA		
	1 Veteran	2 Veterans	1 Beneficiary	2 Beneficiaries	3 or more Beneficiaries
<b>Enhanced Plan</b>					
1	\$21.50	\$43.00	\$21.50	\$43.00	\$64.50
2	\$20.51	\$41.02	\$20.51	\$41.02	\$61.53
3	\$22.61	\$45.22	\$22.61	\$45.22	\$67.83
4	\$18.87	\$37.74	\$18.87	\$37.74	\$56.61
5	\$26.05	\$52.10	\$26.05	\$52.10	\$78.15
<b>Comprehensive Plan</b>					
1	\$36.89	\$73.78	\$36.89	\$73.78	\$110.67
2	\$35.07	\$70.14	\$35.07	\$70.14	\$105.22
3	\$38.91	\$77.83	\$38.91	\$77.83	\$116.74
4	\$32.10	\$64.19	\$32.10	\$64.19	\$96.29
5	\$45.16	\$90.32	\$45.16	\$90.32	\$135.48
<b>Prime Plan</b>					
1	\$45.88	\$91.76	\$45.88	\$91.76	\$137.64
2	\$43.58	\$87.16	\$43.58	\$87.16	\$130.74
3	\$48.47	\$96.94	\$48.47	\$96.94	\$145.41
4	\$39.79	\$79.58	\$39.79	\$79.58	\$119.37
5	\$56.41	\$112.82	\$56.41	\$112.82	\$169.23

You can find an in-network dentist, more detailed information on the VADIP plans, and learn about new access to discounts on LASIK and hearing aids at [deltadentalins.com/vadip](https://deltadentalins.com/vadip).

VADIP is administered and underwritten by Delta Dental of California through its subsidiary, Delta Dental Insurance Company. Delta Dental is a registered mark of Delta Dental Plans Association.

This dental benefit program helps protect the smiles of Veterans and their families by offering comprehensive and competitively priced dental coverage.

Participation in VADIP is open to Veterans enrolled in the VA Health Care System and eligible family members who are beneficiaries of the VA's Civilian Health and Medical Program (CHAMPVA).

You must apply with the VA to be eligible for the VA health care benefits. Please visit [www.va.gov/healthbenefits](http://www.va.gov/healthbenefits) for more information or call 1-877-222-VETS.

VADIP covers dental services provided in the United States, the District of Columbia, Puerto Rico, Guam, the U.S. Virgin Islands, American Samoa, and the Commonwealth of the Northern Mariana Islands.

## To enroll:

[MetLife.com/VADIP](http://MetLife.com/VADIP)  
1-888-310-1681

**Enrollment:** MetLife manages the dental enrollment process and enrollment in this program is "evergreen" (open throughout the year and not limited to a specific enrollment period).



- Participants can enroll in a high option or standard plan option as they become eligible.
- MetLife will verify an applicant's eligibility through an eligibility verification process prior to informing the applicant of their eligibility for this dental program. MetLife will enroll eligible applicants within 5 calendar days from the date of receipt of a request to enroll.
- If you have any questions or encounter an issue with your enrollment, we ask that you contact our customer service for assistance at 1-888-310-1681.
- Lock-in Period: The initial enrollment period will be 12 calendar months.
- The rates provided in this Plan Summary are valid until the end of the calendar year, unless specified otherwise.



## You can choose

We've made it simple to choose the right plan to fit your budget with Standard and High Options.

**Both plans provide savings<sup>1</sup> for you and your family.**  
**You'll receive:**

- Competitive pricing
- No annual deductible for in-network services<sup>2</sup>
- No waiting periods (except for Orthodontia in high plan which has a 24-month waiting period)

### Standard Option:

- No cost for in-network cleanings, X-rays and exams<sup>3</sup>
- \$1,300/\$1,500\* in-network annual maximum benefit per person

### High Option provides you with additional protection from unforeseen dental costs:

- No cost for in-network cleanings, X-rays and exams<sup>3</sup>
- \$3,000/\$3,500\* annual maximum benefit per person
- Orthodontia coverage for dependent children up to age 19\*\*

### Dental Plan Summary

Coverage Type	Standard Option		High Option	
	In-Network <sup>4</sup>	Out-of-Network <sup>5</sup>	In-Network <sup>4</sup>	Out-of-Network <sup>5</sup>
<b>Basic — Class A</b> cleanings, bitewing X-rays and oral examinations	100%	60%	100%	90%
<b>Intermediate — Class B</b> X-rays (other than bitewing), fillings and periodontal maintenance	50%	40%	70%	60%
<b>Major — Class C</b> crowns, bridges, root canal treatment and dentures	30%	20%	50%	40%
<b>Orthodontia — Class D**</b> comprehensive orthodontic treatment, fixed appliance	Not Covered	Not Covered	50%	50%
Maximums & Deductibles	In-Network <sup>4</sup>	Out-of-Network <sup>5</sup>	In-Network <sup>4</sup>	Out-of-Network <sup>5</sup>
<b>Annual Maximum Per Person</b>	\$1,300/\$1,500*	\$1,000/\$1,200*	\$3,000/\$3,500*	\$3,000/\$3,500*
<b>Dependent Child Ortho:</b> Lifetime Maximum Per Person	Not Covered	Not Covered	\$3,000	\$3,000
<b>Annual Deductible Per Person:</b> Applies to Basic, Intermediate and Major Service	\$0.00	\$50.00	\$0.00	\$50.00

### In-Network

- Participating dentists charge negotiated fees for covered services that are typically 35–50% less than average charges in the same community based on MetLife data<sup>6</sup>.
- Negotiated fees may even apply to services your plan doesn't cover, including any you've received after you reach your plan's annual maximum.
- To find out if your dentist is in the network, visit **MetLife.com/VADIP** and use our "Find a Dentist" tool.

### Out-of-Network

- A non-participating dentist sets his or her standard fee, which is typically higher than the negotiated fee.
- You will be responsible for the difference between your dentist's charge and the covered percentage of the Maximum Allowable Charge<sup>5</sup> for a given service.



\* The Annual Maximum will increase by \$200 in the Standard Option, and by \$500 in the High option on January 1st following completion of 12 months of enrollment in the selected option.

\*\* Orthodontia is for dependent children only. Orthodontia coverage is available for dependents up to age 19 and the dependent must be covered under the High Option for 24 consecutive months before orthodontia will be covered.

1. Savings from enrolling in a dental benefits plan [featuring the MetLife Preferred Dentist Program] will depend on various factors, including the cost of the plan, how often participants visit a dentist, and the cost of services rendered.

2. In-network refers to benefits provided under this program for covered dental services that are provided by a participating dentist. Out-of-network refers to benefits provided under this program for

covered dental services that are not provided by a participating dentist.

3. Subject to frequency limitations.

4. IN-NETWORK: Negotiated fees with participating dentists are typically 30% to 45% less than average dental charges in the same community based on MetLife data. Negotiated fees refer to the fees that in-network dentists have agreed to accept as payment in full for certain services, subject to any co-payments, deductibles, cost sharing and benefits maximums. Negotiated fees are subject to change. Negotiated fees do not apply to non-covered services in states that prohibit limitations for services not covered under a plan. Participating providers in these states may charge their non-negotiated fees for non-covered services. For in-network covered services, the percentages shown are the percentage of the negotiated fee that is covered by the plan. Negotiated fees

may also apply to services your dental plan does not cover or services received after you've reached your annual plan maximum, depending on applicable law.

5. OUT-OF-NETWORK: Reimbursement for out-of-network services is based on the lesser of the dentist's actual fee or the Maximum Allowable Charge (MAC). The out-of-network Maximum Allowable Charge is a scheduled amount determined by MetLife.

6. Negotiated fees refer to the fees that in-network dentists have agreed to accept as payment in full for certain services, subject to any co-payments, deductibles, cost sharing and benefits maximums. Negotiated fees are subject to change. Negotiated fees do not apply to non-covered services in states that prohibit limitations for services not covered under a plan. Participating providers in these states may charge their non-negotiated fees for non-covered services.



\*Note this is not a complete list. It is updated as often as possible, and is a reflection of the information the WDA is able to gather from each individual dental clinic. Some clinics may have changed their hours of operation or scope of dental services since this listing was finalized.

Clinic by County	Address/Phone	Website	Clinic Hours	Limitations For Patient Eligibility
<b>Ashland</b>				
Northlakes - Ashland	300 Main St W, Ashland, WI, 54806, Ph: (715) 685-2200	<a href="https://bit.ly/3pWq8hW">https://bit.ly/3pWq8hW</a>	Monday: 8 a.m. - 5 p.m. Tuesday- Thursday: 7 a.m. - 5:30 p.m. Friday: 7 a.m. - 5 p.m.	Patients with private insurance, BadgerCare or those with no insurance. We also have a Sliding Fee Scale for patients who qualify.
<b>Barron</b>				
Marshfield Clinic - Rice Lake Dental Center	1501 W Stout St., Rice Lake, WI, 54868, Ph: (715) 236-8900	<a href="https://bit.ly/3tOFkz0">https://bit.ly/3tOFkz0</a>	Monday - Friday: 8 a.m. - 5 p.m.	Serve all patients, regardless of ability to pay or insurance status. Those who lack access to dental care are priority.
Northlakes - Turtle Lake Clinic	730 Swede Avenue, Turtle Lake, WI, 54889, Ph: (715) 986-2599	<a href="https://bit.ly/37pXAHt">https://bit.ly/37pXAHt</a>	Monday-Friday: 7:30 a.m. - 5:30 p.m.	Participants of BadgerCare, and patients on our sliding fee schedule program.
<b>Bayfield</b>				
Northlakes - Iron River Clinic	7665 US Hwy 2, Iron River, WI, 54847, Ph: (715) 372-5001	<a href="https://bit.ly/3CymT5w">https://bit.ly/3CymT5w</a>	Monday - Thursday: 7 a.m. - 5 p.m. Friday: 7:30 am - 5:00 pm	Participants of BadgerCare, and patients on our sliding fee schedule program.
<b>Brown</b>				



Clinic by County	Address/Phone	Website	Clinic Hours	Limitations For Patient Eligibility
Vivient Health - Green Bay Dental Clinic	445 S. Adams St., Green Bay, WI, 54301, Ph: (920) 437-7400	<a href="http://bit.ly/3w0riNw">bit.ly/3w0riNw</a>	Monday - Friday: 8:30 a.m. - 4:30 p.m.	HIV-Positive Wisconsin Residents regardless of ability to pay.
Brown County Oral Health Partnership - Howe Dental Clinic	526 S. Monroe Ave., Green Bay, WI, 54301, Ph: (920) 965-0831	<a href="https://bit.ly/3w42jZx">https://bit.ly/3w42jZx</a>	Monday - Thursday: 8 a.m. - 4 p.m. Friday: 8 a.m. - 2 p.m.	Children 0-19 years old, resident of Brown County. Must have Medical Assistance, BadgerCare, or Forward Health Card, or be uninsured but qualify for free/reduced lunch program.
Brown County Oral Health Partnership - Salvation Army Kroc Dental Clinic	1315 Lime Kiln Rd., Green Bay, WI, 54302, Ph: (920) 965-0831	<a href="https://bit.ly/3w42jZx">https://bit.ly/3w42jZx</a>	Monday - Thursday: 8 a.m. - 4 p.m. Friday: 8 a.m. - 2 p.m.	Children 0-19 years old, resident of Brown County. Must have Medical Assistance, BadgerCare, or Forward Health Card, or be uninsured but qualify for free/reduced lunch program.
Brown County Oral Health Partnership - West Children's Dental Clinic	2247 Fox Heights Ln, Green Bay, WI, 54304, Ph: (920) 965-0831	<a href="https://bit.ly/3w42jZx">https://bit.ly/3w42jZx</a>	Monday - Thursday: 8 a.m. - 4 p.m. Friday: 8 a.m. - 2 p.m.	Children 0-19 years old, resident of Brown County. Must have Medical Assistance, BadgerCare, or Forward Health Card, or be uninsured but qualify for free/reduced lunch program.
N.E.W. Community Dental Clinic - Northeast Wisconsin Technical College	2740 W. Mason St., Green Bay, WI, 54307, Ph: (920) 272-9300	<a href="https://bit.ly/3hZA2Lp">https://bit.ly/3hZA2Lp</a>	Monday-Thursday: 8 a.m. - Noon & 1 p.m. - 5 p.m.  Friday: 8 a.m. - Noon	Uninsured, BadgerCare Plus and Medicaid patients.
Northeast Wisconsin Technical College - Dental Hygiene Clinic	2740 W. Mason St., Green Bay, WI, 54307, Ph: (920) 498-5450	<a href="https://bit.ly/3i78fbT">https://bit.ly/3i78fbT</a>	Hours vary throughout the year	Adults. Participants of Medical Assistance or BadgerCare, and Low-Income (uninsured), and Insured.

Clinic by County	Address/Phone	Website	Clinic Hours	Limitations For Patient Eligibility
Marshfield Clinic - Chippewa Falls Dental Center	850 Lakeland Dr., Chippewa Falls, WI, 54729, Ph: (715) 738-2000	<a href="https://bit.ly/3I5EQK3">https://bit.ly/3I5EQK3</a>	Monday - Friday: 8 a.m. - 5 p.m.	Serve all patients, regardless of ability to pay or insurance status. Those who lack access to dental care are priority.
<b>Clark</b>				
Marshfield Clinic - Neillsville Dental Center	8 Boon Blvd., Neillsville, WI, 54456, Ph: (715) 743-1900	<a href="https://bit.ly/3pXFDXg">https://bit.ly/3pXFDXg</a>	Monday - Friday: 8 a.m. - 5 p.m.	Serve all patients, regardless of ability to pay or insurance status. Those who lack access to dental care are priority.
<b>Dane</b>				
Access Community Health Centers - Joyce & Marshall Erdman Clinic	2202 S. Park St., Madison, WI, 53713, Ph: (608) 443-5482	<a href="https://bit.ly/3I41oe9">https://bit.ly/3I41oe9</a>	Monday - Friday: 7 a.m. - 4 p.m.	Participant of Medicaid, Medicare, BadgerCare, or has Private Health Insurance, Low-Income (Uninsured).
Access Community Health Centers - Sun Prairie Clinic	1270 W. Main St., Sun Prairie, WI, 53590, Ph: (608) 825-7100	<a href="https://bit.ly/3CUGgg">https://bit.ly/3CUGgg</a>	Monday - Friday: 8 a.m. - 4 p.m.	Residents of Dane County. Participant of Medical Assistance or BadgerCare, or has Private Health Insurance, Low-Income (Uninsured).
Access Community Health Centers - William T. Evjue Clinic	3434 E. Washington Ave., Madison, WI, 53704, Ph: (608) 443-5482	<a href="https://bit.ly/3w1EJfV">https://bit.ly/3w1EJfV</a>	Monday - Friday: 7 a.m. - 4 p.m.	Residents of Dane County. Participant of Medical Assistance or BadgerCare, or has Private Health Insurance, Low-Income (Uninsured).
Affordable Dental Care, Inc	2110 Fordem Ave., Madison, WI, 53704, Ph: (608) 622-4002	<a href="https://bit.ly/34i2y2I">https://bit.ly/34i2y2I</a>	Mon. - Thurs. 8 a.m. - 5 p.m.	Provides full general dentistry at around half the cost of traditional fees to patients without insurance.

Clinic by County	Address/Phone	Website	Clinic Hours	Limitations For Patient Eligibility
AIDS Resource Center of Wisconsin - Madison Dental Clinic	600 Williamson St., Suite H, Madison, WI, 53703, Ph: (608) 252-6540	<a href="https://bit.ly/3q2Ugby">https://bit.ly/3q2Ugby</a>	Monday - Friday: 8:30 a.m. - 5 p.m.	HIV-Positive Wisconsin residents regardless of ability to pay.
Madison Area Technical College - Dental Hygiene Clinic	1705 Hoffman St., Rm. 151, Madison, WI, 53704, Ph: (608) 258-2400	<a href="https://bit.ly/36gN3hg">https://bit.ly/36gN3hg</a>	Monday, Wednesday, Friday: 7:30 a.m. - 3:30 p.m.	All accepted by appointment only.
More Smiles Wisconsin - Boys and Girls Club Clinic	Allied Drive Family Center, 4619 Jenewein Rd, Madison, WI, 53711, Ph: (608) 665-2752		Monday - Friday: 8 a.m. - 4 p.m.	We accept Badgercare and other Medicaid plans, as well as patients without insurance.
More Smiles Wisconsin - Salvation Army Dental Clinic	630 E. Washington Ave., Madison, WI, 53703, Ph: (608) 665-2752	<a href="https://bit.ly/3CDMlq">https://bit.ly/3CDMlq</a>	Monday - Friday: 8 a.m. - 4 p.m. Thu. Urgent Care Clinic: 5:15 - 9 p.m.	Primarily homeless or those at high risk for becoming homeless, Low-Income (uninsured and underinsured).

## Dodge

Church Health Services - Beaver Dam Dental Clinic	115 N. Center St., Beaver Dam, WI, 53916, Ph: (920) 887-1766	<a href="https://bit.ly/3MO6b6X">https://bit.ly/3MO6b6X</a>	Monday - Friday: 8 a.m. - 4 p.m.	Must be 18 years or older and have income below 200% Federal Poverty Line. Accepts Badgercare and Medicaid.
Family Health/La Clinica - Beaver Dam Dental Center	207 S University Ave, Beaver Dam, WI, 53916, Ph: (920) 356-5012	<a href="https://bit.ly/3KJ57PO">https://bit.ly/3KJ57PO</a>	Monday - Thursday: 8 a.m. - 6 p.m., Friday: 8 a.m. - 5 p.m.	Participants of Medical Assistance or BadgerCare, Forward Health, Low-Income (uninsured), or Insured.

## Door



Clinic by County	Address/Phone	Website	Clinic Hours	Limitations For Patient Eligibility
Door County Medical Center Dental Clinic	228 S. 18th Ave., Sturgeon Bay, WI, 54235, Ph: (920) 746-3788	<a href="https://bit.ly/36igPBX">https://bit.ly/36igPBX</a>	Monday - Friday: 8 a.m. - 4:30 p.m.	Residents of Door and Kewaunee Counties. Participants of Medicaid and Low-Income (uninsured).
<b>Douglas</b>				
Lake Superior Community Health Center - Superior Dental Clinic	2222 E. Fifth St. Superior, WI, 54880, Ph: (715) 394-5411	<a href="https://bit.ly/3CF59FH">https://bit.ly/3CF59FH</a>	Monday - Friday: 7:30 a.m. - 5 p.m.	Participants of Medical Assistance or BadgerCare, Insured, Low-Income (Uninsured). Minnesota Forward Health Through Wisconsin. Private insurance accepted
<b>Dunn</b>				
Marshfield Clinic - Menomonie Dental Center	404 Red Cedar St., Menomonie, WI, 54751, Ph: (715) 233-6800	<a href="https://bit.ly/3MMpVW">https://bit.ly/3MMpVW</a>	Monday - Friday: 8 a.m. - 5 p.m.	Serve all patients, regardless of ability to pay or insurance status. Those who lack access to dental care are priority.
<b>Eau Claire</b>				
Chippewa Valley Free Clinic	816 Porter Ave, Eau Claire, WI, 54701, Ph: (715) 839-8477	<a href="https://bit.ly/3q5YWh3">https://bit.ly/3q5YWh3</a>	By appointment only on Tuesdays 5 - 8 p.m.	Uninsured individuals at or below 200% of the federal poverty level. Proof of income required.
Chippewa Valley Technical College - Dental Clinic	Health Education Center, 615 W. Clairemont Ave., Eau Claire, WI, 54701, Ph: (715) 833-6271	<a href="https://bit.ly/3q3qbZH">https://bit.ly/3q3qbZH</a>	Monday - Thursday: 8 a.m. - 5 p.m. & Friday: 8 a.m. - 4 p.m.	Low-Income (uninsured) and Participants of Medicaid.
<b>Fond Du Lac</b>				

Clinic by County	Address/Phone	Website	Clinic Hours	Limitations For Patient Eligibility
Fond du Lac County Health Department - Save a Smile Dental Program	160 S. Macy St., Fond du Lac, WI, 54935, Ph: (920) 929-3090	<a href="https://bit.ly/3CKndhC">https://bit.ly/3CKndhC</a>	Monday - Friday: 8 a.m. - 4:30 p.m.	Not accepting new clients.
<b>Forest</b>				
Forest County Potawatomi Health & Wellness Center - Dental Clinic	8201 Mish Ko Swen Dr., Crandon, WI, 54520, Ph: (715) 478-4313	<a href="https://bit.ly/36kShsl">https://bit.ly/36kShsl</a>	Monday - Thursday: 7 a.m. - 5 p.m.	Residents of Forest County. Low-Income (uninsured) and those with private health insurance.
<b>Grant</b>				
InHealth Dental Clinic	109 E. Bluff St. (Lower Level), Boscobel, WI, 53805, Ph: (608) 375-4324	<a href="https://bit.ly/3JdrIDZ">https://bit.ly/3JdrIDZ</a>	Tuesday & Thursday: 9 a.m. - 3 p.m.	Residents of Grant and Crawford Counties are given priority.
<b>Green</b>				
Fowler Dental Clinic	411 22nd Avenue Monroe, WI, 53566, Ph: (608) 328-9404	<a href="https://bit.ly/3KNtiNj">https://bit.ly/3KNtiNj</a>	By appointment only	Residents of Green and Lafayette County and receive either free/reduced school lunch or are Medicaid recipients with no other dental insurance. Also offers hospital-based program.
<b>Iowa</b>				
Access Community Health Centers - Dodgeville Dental Clinic	103 E. Fountain St., Dodgeville, WI, 53533, Ph: (608) 935-5550	<a href="https://bit.ly/37hmCs3">https://bit.ly/37hmCs3</a>	Monday - Friday: 7 a.m. - 4 p.m.	Residents of Dane, Iowa, Sauk, Grant, and Richland counties. Participants of Medical Assistance or BadgerCare, or has Private Health Insurance, Low-Income (Uninsured).
<b>Jackson</b>				

Clinic by County	Address/Phone	Website	Clinic Hours	Limitations For Patient Eligibility
Marshfield Clinic - Black River Falls Dental Clinic	N6571 Lumberjack Guy Rd., Black River Falls, WI, 54615, Ph: (715) 670-0400	<a href="https://bit.ly/3t9q8xe">https://bit.ly/3t9q8xe</a>	Monday - Friday: 8 a.m. - 5 p.m.	Serve all patients, regardless of ability to pay or insurance status. Those who lack access to dental care are priority.
<b>Jefferson</b>				
Jefferson County Community Dental Clinic	520 Handeyside Ln., Lower Level, Fort Atkinson, WI, 53538, Ph: (920) 563-4372	<a href="https://bit.ly/3q3cABg">https://bit.ly/3q3cABg</a>	Monday - Thursday: 8 a.m. - 4 p.m., closed Friday	Residents of Jefferson County. Participants of Medical Assistance or BadgerCare, Income below 200% FPL (uninsured).
<b>Juneau</b>				
Family Health Mauston Dental Center	880 Herriot Dr., Mauston, WI, 53948, Ph: (608) 847-6700	<a href="https://bit.ly/34zGZzK">https://bit.ly/34zGZzK</a>	Mon, Thu: 7:30 a.m. - 7 p.m., Tue, Wed: 7:30 a.m. - 6 p.m. Fri: 7:30 a.m. - 5 p.m.	Participants of Medical Assistance or BadgerCare, Forward Health, Low-Income (uninsured), or Insured.
<b>Kenosha</b>				
Kenosha Community Health Center - Dental Clinic	6226 14th Ave., Kenosha, WI, 53143, Ph: (262) 656-7590	<a href="https://bit.ly/3taUSOz">https://bit.ly/3taUSOz</a>	Monday – Thursday: 7 a.m. – 7 p.m. Friday: 7 a.m. – 5 p.m. Saturday: 7 a.m. – 3 p.m.	Participants of Medical Assistance or BadgerCare, or Low-Income (Uninsured), Insured.
<b>Langlade</b>				
Bridge Community Health Center - Antigo Dental Clinic	1111 Langlade Rd., Antigo, WI, 54409, Ph: (715) 627-4383	<a href="https://bit.ly/3q5Fp05">https://bit.ly/3q5Fp05</a>	Monday - Friday: 8 a.m. - 5 p.m.	Residents of Lincoln, Langlade, Forest and Oneida counties. Participants of Medicaid, BadgerCare, or Private Health Insurance, Low-Income (Uninsured).
<b>Lincoln</b>				



Clinic by County	Address/Phone	Website	Clinic Hours	Limitations For Patient Eligibility
Bridge Community Health Center - Merrill Dental Clinic	503 S, Center Ave. Ste 6, Merrill, WI, 54452, Ph: (715) 848-4884	<a href="https://bit.ly/3q5Fp05">https://bit.ly/3q5Fp05</a>	Temporarily closed	Residents of Lincoln, Langlade, Forest and Oneida counties. Participants of Medicaid, BadgerCare, or Private Health Insurance, Low-Income (Uninsured).
<b>Manitowoc</b>				
Lakeshore Community Health Center - Manitowoc Dental Clinic	2719 Calumet Ave. Manitowoc, WI, 54220, Ph: (920) 686-2333	<a href="https://bit.ly/3I9yDga">https://bit.ly/3I9yDga</a>	Monday - Friday: 7 a.m. - 5 p.m.	Participants of Medical Assistance or BadgerCare, or Low-Income (Uninsured), Insured.
Lakeshore Technical College - Dental Clinic	1290 North Ave., Cleveland, WI, 53015, Ph: (920) 693-1185	<a href="https://bit.ly/34FcLeK">https://bit.ly/34FcLeK</a>	During School Year. Wednesday & Friday: 8 a.m. - Noon or 1 p.m. - 5 p.m. (call to verify)	Resident of Sheboygan or Manitowoc Counties. Participants of MA and BadgerCare with valid Forward Card.
<b>Marathon</b>				
Bridge Community Health Center - Wausau Dental Clinic	1810 N. 2nd St., Wausau, WI, 54403, Ph: (715) 848-4884	<a href="https://bit.ly/3q5Fp05">https://bit.ly/3q5Fp05</a>	Monday - Friday: 8 a.m. - 5 p.m.	Participants of Medicaid, BadgerCare, or Private Health Insurance, Low-Income (Uninsured).
Northcentral Technical College - Dental Hygiene Clinic	1000 W. Campus Dr. First Floor, Wausau, WI, 54401, Ph: (715) 803-1585	<a href="https://bit.ly/3Ic5wZA">https://bit.ly/3Ic5wZA</a>	Monday - Thursday: 8 a.m. - 5 p.m.	Low cost hygiene visits. All patients are welcome.
<b>Milwaukee</b>				
AIDS Resource Center of Wisconsin - Milwaukee Dental Clinic	820 N. Plankinton Ave., Milwaukee, WI, 53203, Ph: (414) 273-1991	<a href="https://bit.ly/3q4BCQX">https://bit.ly/3q4BCQX</a>	Monday - Friday: 8 a.m. - 5 p.m.	HIV-Positive Wisconsin Residents regardless of ability to pay

Clinic by County	Address/Phone	Website	Clinic Hours	Limitations For Patient Eligibility
Bread of Healing - Cross Clinic	Cross Lutheran Church, 1821 North 16th St., Milwaukee, WI, 53205, Ph: (414) 977-0001	<a href="https://bit.ly/3w3ZY0C">https://bit.ly/3w3ZY0C</a>	By appointment only: Mon 9 a.m. - 5 p.m. Tues 1 - 5 p.m., Thurs. 9 a.m. - 5 p.m., Fri. 8:30 a.m. - Noon	Limited dental for established patients in the clinic.
Children Hospital of Wisconsin - Downtown Dental Center	1020 N. 12th Street, Milwaukee, WI, 53201, Ph: (414) 277-8960	<a href="https://bit.ly/3tb7MvZ">https://bit.ly/3tb7MvZ</a>		Pediatric dental care. Accepts Title XIX and HMO Patients, private insured as well. Patients must have the clinic in their plan or in the network
Children's Hospital of Wisconsin - Midtown Dental Center	5433 W Fond du Lac Ave., Milwaukee, WI, 53216, Ph: (414) 445-6500	<a href="https://bit.ly/3q5T8nD">https://bit.ly/3q5T8nD</a>	Monday - Friday 8 a.m. - 4:30 p.m.	Pediatric dental
Children's Hospital of Wisconsin - New Berlin Dental Center	4855 S Moorland Rd, New Berlin, WI, 53151, Ph: (414) 266-2040	<a href="https://bit.ly/3tT2LqN">https://bit.ly/3tT2LqN</a>	Mon - Fri: 8:30 a.m. - 5 p.m.	Accept Title XIX and HMO Patients, private insured as well. Patients must have the clinic in their plan or in the network
Asencion- St. Elizabeth Ann Seton Dental Clinic	1730 S. 13th St., Milwaukee, WI, 53204, Ph: (414) 383-3220	<a href="https://bit.ly/3q6kha9">https://bit.ly/3q6kha9</a>	Monday - Thursday: 7:30 a.m. - 4 p.m. & Friday: 7:30 a.m. - Noon	BadgerCare CorePlus Plan (extractions only) and uninsured adult patients below 200% Federal Poverty Level and meets zip-code requirement. Children with Medical Assistance accepted if referred by Smart Smiles.
Gardetto Family Community Dental Clinic	St. Ann Center - Bucyrus Campus, 2450 W. North Ave., Milwaukee, WI, 53205, Ph: (414) 210-2440	<a href="https://bit.ly/3w68YSZ">https://bit.ly/3w68YSZ</a>	By appointment only	Serves any WI resident with moderate to severe cognitive or physical disabilities. Referral from dentist or physician required. See website for referral form.

Clinic by County	Address/Phone	Website	Clinic Hours	Limitations For Patient Eligibility
Isaac Coggs Heritage Health Center - Dental Clinic	8200 W. Silver Spring Dr., Milwaukee, WI, 53218, Ph: (414) 760-3900	<a href="https://bit.ly/3i8wUwM">https://bit.ly/3i8wUwM</a>	Monday 7:30 a.m. - 7:30 p.m. Tues - Fri: 7:30 a.m. - 5:30 p.m.	Low-Income (uninsured), underinsured, and participants of Medical Assistance.
Marquette University School of Dentistry Clinic	1801 W. Wisconsin Ave., Milwaukee, WI, 53233, Ph: (414) 288-6790	<a href="https://bit.ly/3ia8ROd">https://bit.ly/3ia8ROd</a>	Monday - Friday: 8 a.m. - Noon, 1 - 4:30 p.m.	All patients accepted including MA and Title XIX, Low-Income (uninsured). 13 years and older for general clinic. Must pass through a screening process. Pediatric clinic available.
<u>Martin Luther King Jr. Heritage Health Center - Dental Clinic</u>	2555 N. Martin L. King Jr. Dr., Milwaukee, WI, 53212, Ph: (414) 372-8080	<a href="https://bit.ly/3i8wUwM">https://bit.ly/3i8wUwM</a>	Monday - Friday: 7:30 a.m. - 7:30 p.m.	Low-Income (uninsured), underinsured, and participants of Medical Assistance. Will see WI residents outside of Milwaukee County
Milwaukee Area Technical College - Dental Hygiene Clinic	700 W. Highland Ave., Rm. H115, Milwaukee, WI, 53233, Ph: (414) 297-6573	<a href="https://bit.ly/3q81OKi">https://bit.ly/3q81OKi</a>	During School Year. Hours vary greatly.	Available to community and MATC students.
Next Door Foundation - Dental Clinic (Partners with CHW)	2545 N. 29th St. Suite 101, Milwaukee, WI, 53210, Ph: (414) 372-4007	<a href="https://bit.ly/35XsSFb">https://bit.ly/35XsSFb</a>	Monday - Friday: 8:30 a.m. - 4:30 p.m.	12 or younger and under a specific plan/network.
Progressive Community Health Centers - Lisbon Avenue Health Center Dental Clinic	3522 W. Lisbon Ave., Milwaukee, WI, 53208, Ph: (414) 488-9360	<a href="https://bit.ly/3ldtQKo">https://bit.ly/3ldtQKo</a>	Monday - Thursday: 8 a.m. - 6 p.m. & Friday: 8 a.m. - 5 p.m.	Participants of Medical Assistance or BadgerCare, Low Income (uninsured), and Insured.



Clinic by County	Address/Phone	Website	Clinic Hours	Limitations For Patient Eligibility
Southside Guadalupe Center - Dental Clinic	1112 S. 3rd St., Milwaukee, WI, 53204, Ph: (414) 643-8787	<a href="https://bit.ly/3w9rp9n">https://bit.ly/3w9rp9n</a>	Monday - Friday: 8:30 a.m. - 4:30 p.m. (Occasionally Saturday: 8 a.m. - Noon)	Participants of Medical Assistance and Low-Income (uninsured).
<b>Monroe</b>				
Scenic Bluffs - Cashton Health Center Dental Clinic	238 Front St., Cashton, WI, 54619, Ph: (608) 654-5100	<a href="https://bit.ly/3t41Rsh">https://bit.ly/3t41Rsh</a>	Current patients only	Residents of La Crosse, Vernon, Crawford and Monroe Counties. Participants of Medical Assistance or BadgerCare, Insured, and Low-Income (Uninsured).
<b>Oconto</b>				
Northern Health Centers - Lakewood Dental Clinic	15397 Hwy 32, Lakewood, WI, 54138, Ph: (715) 276-6321	<a href="https://bit.ly/3q3sDz1">https://bit.ly/3q3sDz1</a>	Mon: 7:30 am - 6 p.m., Tues - Thu: 7 a.m. - 6 p.m., Fri: 7 a.m. - 4.m.	Residents of Oconto, Marinette, Forest, Langlade, and Florence Counties.
Northern Health Centers - Oconto Dental Clinic	820 Arbutus Ave., Oconto, WI, 54153, Ph: (920) 516-7107	<a href="https://bit.ly/3uiHM15">https://bit.ly/3uiHM15</a>	Monday - Friday: 7 a.m. - 5 p.m.	Residents of Oconto, Marinette, Forest, Langlade, and Florence Counties.
<b>Oneida</b>				
Marshfield Clinic - Rhinelander Dental Center	2268 N. Shore Dr., Rhinelander, WI, 54501, Ph: (715) 420-1400	<a href="https://bit.ly/3u26P87">https://bit.ly/3u26P87</a>	Monday - Friday: 8 a.m. - 5 p.m.	Serve all patients, regardless of ability to pay or insurance status. Those who lack access to dental care are priority.
<b>Out of State</b>				

Clinic by County	Address/Phone	Website	Clinic Hours	Limitations For Patient Eligibility
Lake Superior Community Health Center- Duluth Dental Clinic	4325 Grand Ave., Duluth, MN, 55807, Ph: (218) 628-7035	<a href="https://bit.ly/3CF59FH">https://bit.ly/3CF59FH</a>	Monday - Friday: 7:30 a.m. - 5 p.m.	Participants of Medical Assistance, BadgerCare, Minnesota Care, Forward Health through Wisconsin, Insured, and Low-Income (Uninsured).
<b>Outagamie</b>				
Partnership Community Health Center - Appleton Dental Clinic	5337 W. Grand Market Dr., Appleton, WI, 54913, Ph: (920) 731-7445	<a href="https://bit.ly/3MPD61H">https://bit.ly/3MPD61H</a>	Monday - Thursday: 7:45 a.m. - 7 p.m., Friday 7:45 a.m. - 5 p.m.	Residents of Calumet, Outagamie, and Winnebago Counties. Participants of Medical Assistance or BadgerCare, Uninsured or Insured. All ages, including those who are pregnant, have diabetes or have other health
Tri-County Community Dental Clinic (TCCDC)	9 Tri-Park Way, Appleton, WI, 54914, Ph: (920) 882-5500	<a href="https://bit.ly/360hto6">https://bit.ly/360hto6</a>	Monday - Friday: 8 a.m. - 4 p.m.	Residents of Calumet, Outagamie and Winnebago Counties. Low-Income below 200% Federal Poverty Level (uninsured). Participants of Medical Assistance or BadgerCare. Adults emergency based. children
<b>Polk</b>				
Northlakes - Balsam Lake Clinic	Polk County Health Dept., 100 Polk County Plaza, Ste. 180, Balsam Lake, WI, 54810, Ph: (715) 554-0120		Mon - Tues: 8:30 a.m. - 4:30 p.m.	Primary dental care for children and adults who have Medicaid or who qualify for sliding fee scale
<b>Portage</b>				
Ministry Health Care - Dental Clinic	3504 E. Maria Dr., Stevens Point, WI, 54481, Ph: (715) 342-8060		Mon - Thu: 8:30 a.m. - 5:30 p.m., Fri: 8 a.m. - 4 p.m.	Residents of Waupaca or Portage Counties. Participants of Medicaid and BadgerCare.
<b>Price</b>				

Clinic by County	Address/Phone	Website	Clinic Hours	Limitations For Patient Eligibility
Marshfield Clinic - Park Falls Dental Center	75 Sherry Ave., Park Falls, WI, 54552, Ph: (715) 762-0200	<a href="https://bit.ly/3idasTr">https://bit.ly/3idasTr</a>	Monday - Friday: 8 a.m. - 5 p.m.	Serve all patients, regardless of ability to pay or insurance status. Those who lack access to dental care are priority.
<b>Racine</b>				
HealthCare Network - Racine Dental Clinic	500 Wisconsin Ave., Ste 102 Racine, WI, 53404, Ph: (262) 632-2400	<a href="https://bit.ly/3uiMFXZ">https://bit.ly/3uiMFXZ</a>	Monday - Friday: 8:30 a.m. - Noon & 1 p.m. - 4:45 p.m.	Residents of Racine County. Gross income below 200% of Federal Poverty Level, uninsured and ineligible for Government Medical Assistance Programs.
<b>Rock</b>				
Beloit Area Community Health Center - Dental Clinic	74 Eclipse Center, Beloit, WI, 53511, Ph: (608) 361-0311	<a href="https://bit.ly/36gBfeO">https://bit.ly/36gBfeO</a>	Mon, Tues, Thurs & Fri 8 a.m. - 5 p.m. & Wednesday: 7:30 a.m. - 5 p.m.	Serve all patients, regardless of ability to pay or insurance status – including Medicare and commercial insurance – along with patients with special health care needs. Those who lack dental care are a priority.
HealthNet - Janesville Dental Clinic	1344 Creston Park Dr., Suite 2, Janesville, WI, 53545, Ph: (608) 314-1940	<a href="https://bit.ly/36klbIW">https://bit.ly/36klbIW</a>	Monday - Friday: 8 a.m. - Noon, 1 - 5 p.m.	Residents of Rock County. Must be without dental insurance, below 185% FPL and apply for badgercare/medicaid. Need to apply and interview with the Medical facility.
<b>Rusk</b>				
Marshfield Clinic - Ladysmith Dental Center	315 Miner Ave. W., Ladysmith, WI, 54848, Ph: (715) 532-2500	<a href="https://bit.ly/3w5cWLPas">https://bit.ly/3w5cWLPas</a>	Monday - Friday: 7 a.m. - 5 p.m.	Serve all patients, regardless of ability to pay or insurance status. Those who lack access to dental care are priority.
<b>Sauk</b>				

Clinic by County	Address/Phone	Website	Clinic Hours	Limitations For Patient Eligibility
St. Vincent de Paul Dental Clinic	1906 North Street, Prairie du Sac, WI, 53578, Ph: (608) 644-0504		Hours vary.	Sliding scale fee discounted services for uninsured or underinsured residents of Sauk and Columbia counties. Medicaid recipients accepted. No walk-ins or emergencies accepted.
<b>Sawyer</b>				
Northlakes - Hayward Clinic	15954 Rivers Edge Dr., Hayward, WI, 54843, Ph: (715) 934-2224	<a href="https://bit.ly/3ClcXGC">https://bit.ly/3ClcXGC</a>	Monday - Friday: 7 a.m. - 5:30 p.m.	Participants of Medical Assistance or BadgerCare, and Insured, Low-Income (uninsured). Dental for all ages
<b>Shawano</b>				
Stockbridge - Munsee Health and Wellness Center - Dental Clinic	W12802 County Highway A, Bowler, WI, 54416, Ph: (715) 793-5019	<a href="https://bit.ly/3MRYGM">https://bit.ly/3MRYGM</a>	Monday - Thursday: 7 a.m. - 5:30 p.m.	Serve all ages, but are required to see a percentage of the Native American population (Mohican Nation). All non-tribal members must be participants of Medical Assistance.
<b>Sheboygan</b>				
Lakeshore Community Health Center - Sheboygan Dental Clinic	1721 Saemann Ave., Sheboygan, WI, 53081, Ph: (920) 783-6633	<a href="https://bit.ly/3I9yDga">https://bit.ly/3I9yDga</a>	Monday - Friday: 7 a.m. - 5 p.m.	Participants of Medical Assistance or Badgercare and Low-Income (uninsured).
<b>Taylor</b>				
Marshfield Clinic - Medford Dental Center	843 W. Broadway Ave., Medford, WI, 54451, Ph: (715) 785-8100	<a href="https://bit.ly/3KG64s4">https://bit.ly/3KG64s4</a>	Monday - Friday: 8 a.m. - 5 p.m.	Serve all patients, regardless of ability to pay or insurance status. Those who lack access to dental care are priority.
<b>Vernon</b>				



Clinic by County	Address/Phone	Website	Clinic Hours	Limitations For Patient Eligibility
Scenic Bluffs - Vernon Memorial Hospital Dental Clinic	407 S. Main St., Viroqua, WI, 54665, Ph: (608) 654-5100	<a href="https://bit.ly/3t41Rsh">https://bit.ly/3t41Rsh</a>	By appointment only	Current patients at this time
<b>Walworth</b>				
Open Arms Free Clinic	205 East Commerce Court Ste A, Elkhorn, WI, 53121, Ph: (262) 379-1401	<a href="https://bit.ly/3pXCFBI">https://bit.ly/3pXCFBI</a>	Monday 9 a.m. - 4 p.m., Tuesday & Wed 9 a.m. - 5 p.m. Thursday 9 a.m. - 6 p.m.	At or below 200% of FPL, live or work in Walworth County, No health insurance, must attend eligibility screening
<b>Washington</b>				
Albrecht Free Clinic	908 W Washington St, West Bend, WI, 53095, Ph: (262) 334-8339	<a href="https://bit.ly/3KBnPci">https://bit.ly/3KBnPci</a>	Appointment only	Individuals who live or work in Washington County with income at or below 200% of FPL. A financial eligibility assessment is required.
<b>Waukesha</b>				
Community Smiles Dental	210 NW Barstow St. Suite 305, Waukesha, WI, 53188, Ph: (262) 522-7645	<a href="https://bit.ly/3CAs6JY">https://bit.ly/3CAs6JY</a>	Monday - Thursday: 8 a.m. - 4:30 p.m. & Friday: 8 a.m. - 2 p.m.	Residents of Waukesha County. Adult participants of Medicaid, low income below 200% Federal Poverty Level (uninsured). Children also eligible, those without access to care are given priority.
Lake Area Free Clinic	856 Armour Rd, Oconomowoc, WI, 53066, Ph: (262) 569-4990	<a href="https://bit.ly/3vU6OB4">https://bit.ly/3vU6OB4</a>	By appointment only: Monday - Thursday 8:30 a.m. - 5 p.m., Friday Varies	Waukesha County adult residents below 200% of Federal Poverty without private dental insurance. Medicaid accepted
Waukesha County Technical College - Dental Hygiene Clinic	327 E. Broadway, Waukesha, WI, , Ph: (262) 691-5224	<a href="https://bit.ly/3JcNRlW">https://bit.ly/3JcNRlW</a>	During School Year. Hours vary	All Patients Accepted.

Clinic by County	Address/Phone	Website	Clinic Hours	Limitations For Patient Eligibility
<b>Waushara</b>				
Family Health/ La Clinica - Medical and Dental Center	400 S. Townline Rd., Wautoma, WI, 54982, Ph: (920) 787-5514	<a href="https://bit.ly/34zGZzK">https://bit.ly/34zGZzK</a>	Mon, Thu: 8 a.m. - 7 p.m., Tue, Wed, Fri: 8 a.m. - 5 p.m.	Participants of Medical Assistance or BadgerCare, Insured, Low-Income (Uninsured). Affordable Care Program.
<b>Winnebago</b>				
Partnership Community Health Center - Oshkosh Dental Clinic	2310 Westowne Ave., Oshkosh, WI, 54904, Ph: (920) 731-7445	<a href="https://bit.ly/3t6dD5H">https://bit.ly/3t6dD5H</a>	Monday - Friday: 7 a.m. - 5 p.m.	Residents of Calumet, Outagamie, and Winnebago Counties. Participants of Medical Assistance or BadgerCare, Uninsured or Insured. All ages.
<b>Wood</b>				
Aspirus Riverview Dental	820 Two Mile Ave., Wisconsin Rapids, WI, 54494, Ph: (715) 424-8575	<a href="https://bit.ly/3KDfMvk">https://bit.ly/3KDfMvk</a>	Limited hours, call for appt	Residents of Wood County. Participants of Medical Assistance or BadgerCare Plus.
Marshfield Clinic - Marshfield Dental Center	1307 N. St. Joseph's Ave., Marshfield, WI, 54449, Ph: (715) 221-5600	<a href="https://bit.ly/34AYM9T">https://bit.ly/34AYM9T</a>	Monday - Friday: 8 a.m. - 5 p.m.	Serve all patients, regardless of ability to pay or insurance status. Those who lack access to dental care are priority.



## Office of Dentistry

Homeless Veterans Dental Program

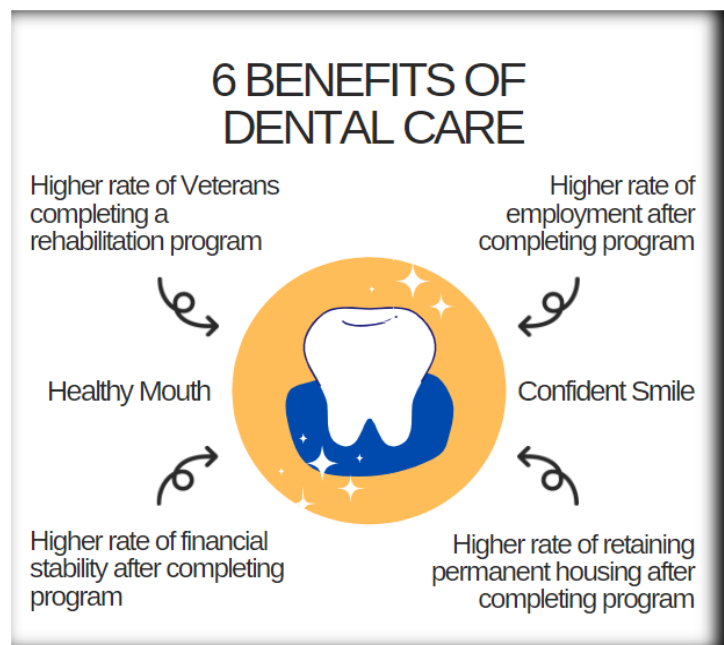
# HOMELESS VETERANS DENTAL PROGRAM (HVDP)

## ELIGIBILITY CRITERIA

- Veterans must be eligible for, and enrolled in, VA healthcare.
- Veterans must be enrolled in one of the residential programs listed here for at least **60 days**.
- Veterans are eligible for one course of treatment (or episode) of limited dental care, which may include examinations, x-rays, cleanings, oral hygiene instructions, fillings, extractions and partial or full dentures.
- Once the entire episode of dental care is complete, the Veteran is responsible for maintaining continued dental care at their own cost. However, if a Veteran re-enrolls in an eligible program in the future, they may receive another episode of dental care.
- Veterans who are 100% service connected (or paid at the 100% rate) are eligible for comprehensive dental care regardless of their enrollment in eligible programs.

The HVDP promotes oral health for all Veterans that have faced, or are at risk for, homelessness. Veterans who are enrolled in the following **residential rehabilitation** programs may be eligible for dental care.

- Grant and Per Diem Program
- Health Care for Homeless Veterans Program
- Domiciliary Mental Health Residential Rehabilitation Treatment Programs
- Compensated Work Therapy-Transitional Residence
- Community Residential Care and Medical Foster Home Programs





## COMMON ORAL HEALTH CONCERNS

- Poor oral health can cause pain, infection, tooth loss, difficulty eating, and decreased self-confidence.
- **Tooth decay** is the destruction the hard layers of your teeth causing holes or *cavities*. When you eat or drink foods containing sugars, the bacteria in the mouth can produce acids that attack tooth enamel.
- The bacteria live in **plaque** – the soft, sticky film that builds up on the teeth. Plaque build-up also leads to the inflammation of the gums. This inflammation, called gingivitis can lead to advanced **gum disease** (or periodontitis).
- If you have **swollen gums or bleeding** while brushing and flossing, you may have gum disease. Other symptoms include persistent bad breath, loose teeth, and gums pulling away from the teeth, causing the teeth to look longer than before.
- If plaque is not removed regularly by tooth brushing and flossing, it hardens to create calculus (also known as tartar). **Calculus** cannot be removed with a toothbrush or floss; only a dental professional can remove it during an oral cleaning.
- **Tobacco and vaping** increase the risk of gum disease and oral cancer. If you use tobacco, seek help to stop. Talk to your doctor or call a help line. 1- 800-QUIT-NOW is a good resource.
- Many medications can cause **dry mouth**, which increases your risk of cavities and gum disease. You can increase saliva production by using sugarless gum or candy or using saliva simulating products. Drinking water and using saliva substitutes can also help maintain a moist mouth.
- **Diet and nutrition** affect the tissues in the mouth; and the health of the mouth affects how well nutrients are used by the body. A nutritious, balanced diet helps keep the mouth healthy.

Tell your dental team about any concerns or questions you might have about your oral health.

## HOW TO CARE FOR YOUR TEETH



### BRUSH TWICE A DAY

\*with a soft toothbrush and fluoride toothpaste



### FLOSS DAILY

\*to reduce bacteria between teeth



### FOR FRESH BREATH AND EXTRA CAVITY PROTECTION

\*you can add an alcohol-free, fluoride mouthwash

A healthy smile will improve your chances of success.

MAKE YOUR DENTAL HEALTH A PRIORITY!

### CONTACT US:

Persons wishing to obtain information regarding the Homeless Veterans Dental Program in their area should contact their nearest VA hospital and ask for the homeless coordinator's office.

**Phone:** 1-877-4AID-VET (1-877-424-3838)

**Email:** Homelessvets@va.gov

**Web:** <https://www.va.gov/homeless/dental.asp>

**Dental Benefits for Veterans FAQ Sheet:**

[https://www.va.gov/healthbenefits/resources/publications/IB10-442\\_dental\\_benefits\\_for\\_veterans.pdf](https://www.va.gov/healthbenefits/resources/publications/IB10-442_dental_benefits_for_veterans.pdf)

## **County Veteran Service Officers (CVSO)**

### **Veteran Administration Benefits**

Contact: Rick Flowers, (414) 266-1234 or (414) 266-1235 (office)

6401 W. Greenfield Ave, Milwaukee, WI 53214

[Rick.flowers@milwaukeeecountrywi.gov](mailto:Rick.flowers@milwaukeeecountrywi.gov)

## **Emergency Dental Clinics**



Contact: (414) 800-9919

Clinic Address: 9305 W National Ave West Allis, WI 53227

### **Clinic Hours:**

Sunday: 10:00am - 9:00pm

Monday: 9:00am - 9:00pm

Tuesday: 9:00am – 9:00pm

Wednesday: 9:00am - 5:00pm

Thursday: 9:00am - 5:00pm

Friday: 9:00am - 5:00pm

Saturday: 9:00am - 9:00pm

## **Marquette University Dental School Clinic**

\*Please arrive by 8am, first come first served\*

Contact: (414) 288-7388

Clinic Address: 1801 W Wisconsin Ave, WI 53233

Clinic Hours:

Sunday: Closed

Monday: 9:00am - 4:30pm

Tuesday: 9:00am – 4:30pm

Wednesday: 9:00am - 4:30pm

Thursday: 9:00am - 4:30pm

Friday: 9:00am - 4:30pm

Saturday: Closed