



Update _2_0_246

Clinical Reminders

**VA-ONC CLINICAL PATHWAYS – LUNG CANCER
Install Guide**

May 2022

Product Development
Office of Information Technology
Department of Veterans Affairs

Table of Contents

INTRODUCTION 1

PRE-INSTALL..... 10

INSTALL DETAILS 11

INSTALL EXAMPLE 11

POST INSTALLATION 19

Introduction

This update is for Lung Cancer Clinical Pathways. Clinical pathways standardize evidence-based practices to ensure high quality, cost-effective care for patients at each point in their care plan. The Lung Clinical pathways templates will be used to document treatment decisions related to lung cancer. These templates were developed by the National Oncology Program Office in collaboration with an interdisciplinary team of subject matter experts, with the support of national program offices such as medical oncology, radiation oncology, surgery, pathology, and pharmacy. These templates will be used by all members of a Veteran's Oncology care team to document a treatment decision.

The purpose of these templates is to collect data on Clinical pathways utilization and will facilitate continuous process improvement efforts, which may result in a change to provider practice, local processes, or a change to the Clinical pathway recommendations. Recommendations are based upon national guidelines, published literature, and institutional experience with efficacy, toxicity and cost.

VHA Directive 1415 requires that all sites use the National Oncology templates. If your site does not provide oncology services, the site must request a waiver to exempt it from the requirement to use the National Oncology templates. The waiver can be requested by emailing REDACTED.

UPDATE_2_0_246 contains 1 Reminder Exchange entry:

UPDATE_2_0_246 VA-ONC CLINICAL PATHWAYS – LUNG CANCER

The exchange file contains the following components:

REMINDER GENERAL FINDINGS

VIEW PROGRESS NOTE TEXT

TIU TEMPLATE FIELD

VA-ONC INSTRUCTIONS ON/OFF PATHWAY

VA-ONC OFF REASON TXT

VA-ONC TREATMENT REASON

VA-ONC CLINICAL TRIAL

VA-ONC LUNG PATHWAYS

VA-ONC NEITHER ON/OFF

VA-ONC CONFIRMATION TEXT

VA-ONC NPOP SHAREPOINT

HEALTH FACTORS

VA-REMINDER UPDATES [C]

VA-UPDATE_2_0_246

VA-ONC PRCA MOLECULAR TESTING PATHWAY [C]

VA-ONC PRCA GERM CGP CONSENT FUTURE DATE

VA-ONC PRCA TISSUE SUFFICIENCY UNKNOWN
VA-ONC PRCA CGP ORDER FUTURE DATE
VA-ONC PRCA PRETEST CONSENT: OFF PATH
VA-ONC PRCA PRETEST CONSENT: ON PATH
VA-ONC PRCA GERM CGP PT DECLINE: ON PATH
VA-ONC PRCA GERM CGP ORDER: OFF PATH
VA-ONC PRCA GERM CGP ORDER: ON PATH
VA-ONC PRCA TISSUE SUFFICIENT: OFF PATH
VA-ONC PRCA REASSESS: ON PATH
VA-ONC PRCA LIQUID BIOPSY: ON PATH
VA-ONC PRCA REPEAT BIOPSY: ON PATH
VA-ONC PRCA TISSUE SUFFICIENT: ON PATH
VA-ONC PRCA CGP ORDER: ON PATH
VA-ONC PRCA CGP ORDER: OFF PATH
ONCOLOGY (ONC) LUNG CANCER TREATMENTS [C]
ONC LUNG PALLIATIVE REFERRAL
VA-ONC LUNG SCLC RELAPSE PATHWAY [C]
VA-ONC LUNG SCLC RELAPSE >6M OFF PATH RSN
VA-ONC LUNG SCLC RELAPSE >6M OFF PATH TX
VA-ONC LUNG SCLC RELAPSE >6M CARBO+ETO
VA-ONC LUNG SCLC RELAPSE >6M CLINICAL TRIAL
VA-ONC LUNG SCLC RELAPSE PS 3-4 OFF PATH RSN
VA-ONC LUNG SCLC RELAPSE PS 3-4 OFF PATH TX
VA-ONC LUNG SCLC RELAPSE PS 3-4 REFER HOSPICE
VA-ONC LUNG SCLC RELAPSE PS 3-4 CLINICAL TRIAL
VA-ONC LUNG SCLC RELAPSE PS 0-1-2 OFF PATHWAY RSN
VA-ONC LUNG SCLC RELAPSE PS 0-1-2 OFF PATHWAY TX
VA-ONC LUNG SCLC RELAPSE PS 0-1-2 LURBINECTEDIN
VA-ONC LUNG SCLC RELAPSE PS 0-1-2 CLINICAL TRIAL
VA-ONC LUNG SCLC RELAPSE >6M CARBO+ETO+ATEZ
VA-ONC LUNG SCLC EXTENSIVE STAGE CLINICAL PATHWAY [C]
VA-ONC LUNG SCLC EXT SUB NO PROG OFF PATH RSN
VA-ONC LUNG SCLC EXT SUB NO PROG OFF PATH TX
VA-ONC LUNG SCLC EXT SUB NO PROG MAIN ATEZO
VA-ONC LUNG SCLC EXT SUB NO PROG CLINICAL TRIAL
VA-ONC LUNG SCLC EXT INI IMMUNO OFF PATH RSN
VA-ONC LUNG SCLC EXT INI IMMUNO OFF PATH TX
VA-ONC LUNG SCLC EXT INI IMMUNO REFER HOSPICE
VA-ONC LUNG SCLC EXT INI IMMUNO CLINICAL TRIAL
VA-ONC LUNG SCLC EXT INI CHEMO OFF PATH RSN
VA-ONC LUNG SCLC EXT INI CHEMO OFF PATH TX
VA-ONC LUNG SCLC EXT INI CHEMO CARBO+ETO
VA-ONC LUNG SCLC EXT INI CHEMO CLINICAL TRIAL
VA-ONC LUNG SCLC EXT INI CHEMO/IMMUNO OFF PATH RSN
VA-ONC LUNG SCLC EXT INI CHEMO/IMMUNO OFF PATH TX
VA-ONC LUNG SCLC EXT INI CHEMO/IMMUNO CARBO+ETO+ATEZO
VA-ONC LUNG SCLC EXT INI CHEMO/IMMUNO CLINICAL TRIAL
VA-ONC LUNG SCLC EXT SYMPTOM METS OFF PATH RSN
VA-ONC LUNG SCLC EXT SYMPTOM METS OFF PATH TX
VA-ONC LUNG SCLC EXT SYMPTOM METS CLINICAL TRIAL
VA-ONC LUNG SCLC EXT SYMPTOM METS REFER RAD ONC

VA-ONC LUNG SCLC LIMITED STAGE 1ST LINE PATHWAY [C]
VA-ONC LUNG SCLC LIMITED SUB PS3-4 OFF PATH RSN
VA-ONC LUNG SCLC LIMITED SUB PS3-4 OFF PATH TX
VA-ONC LUNG SCLC LIMITED SUB PS3-4 MRI SURVEILLANCE
VA-ONC LUNG SCLC LIMITED SUB PS3-4 CLINICAL TRIAL
VA-ONC LUNG SCLC LIMITED SUB NO PROG OFF PATH RSN
VA-ONC LUNG SCLC LIMITED SUB NO PROG OFF PATH TX
VA-ONC LUNG SCLC LIMITED SUB NO PROG REFER RAD ONC
VA-ONC LUNG SCLC LIMITED SUB NO PROG CLINICAL TRIAL
VA-ONC LUNG SCLC LIMITED INITIAL OFF PATH RSN
VA-ONC LUNG SCLC LIMITED INITIAL OFF PATH TX
VA-ONC LUNG SCLC LIMITED INITIAL CIS+ETO+CHEST RAD
VA-ONC LUNG SCLC LIMITED INITIAL CLINICAL TRIAL
VA-ONC LUNG SCLC INCIDENTAL DISCOVERY PATHWAY [C]
VA-ONC LUNG SCLC INCIDENTAL INCOMPLETE RESECT OFF PATH RSN
VA-ONC LUNG SCLC INCIDENTAL INCOMPLETE RESECT OFF PATH TX
VA-ONC LUNG SCLC INCIDENTAL INCOMPLETE RESECT CIS+ETO+RAD
VA-ONC LUNG SCLC INCIDENTAL INCOMPLETE RESECT CLINICAL TRIAL
VA-ONC LUNG SCLC INCIDENTAL COMPLETE RESECT OFF PATH RSN
VA-ONC LUNG SCLC INCIDENTAL COMPLETE RESECT OFF PATH TX
VA-ONC LUNG SCLC INCIDENTAL COMPLETE RESECT CIS+ETO
VA-ONC LUNG SCLC INCIDENTAL COMPLETE RESECT CLINICAL TRIAL
VA-ONC LUNG SQUAMOUS RELAPSE PATHWAY [C]
VA-ONC LUNG SQR 2ND IMMUNO AMEN RAD OFF PATH REASON
VA-ONC LUNG SQR 3RD LINE NOT AMEN RAD OFF PATH REASON
VA-ONC LUNG SQR 3RD LINE NOT AMEN RAD OFF PATH TX
VA-ONC LUNG SQR 3RD LINE NOT AMEN RAD REFER PALL CARE
VA-ONC LUNG SQR 3RD LINE NOT AMEN RAD CLINICAL TRIAL
VA-ONC LUNG SQR 3RD LINE AMEN RAD OFF PATH REASON
VA-ONC LUNG SQR 3RD LINE AMEN RAD OFF PATH TX
VA-ONC LUNG SQR 3RD LINE AMEN RAD REFER RAD ONC
VA-ONC LUNG SQR 3RD LINE AMEN RAD CLINICAL TRIAL
VA-ONC LUNG SQR 2ND IMMUNO NOT AMEN RAD OFF PATH REASON
VA-ONC LUNG SQR 2ND IMMUNO NOT AMEN RAD OFF PATH TX
VA-ONC LUNG SQR 2ND IMMUNO NOT AMEN RAD CARBO+PACLITAXEL
VA-ONC LUNG SQR 2ND IMMUNO NOT AMEN RAD CLINICAL TRIAL
VA-ONC LUNG SQR 2ND IMMUNO AMEN RAD OFF PATH TX
VA-ONC LUNG SQR 2ND IMMUNO AMEN RAD REFER RAD ONC
VA-ONC LUNG SQR 2ND IMMUNO AMEN RAD CLINICAL TRIAL
VA-ONC LUNG SQR 2ND CHEMO+/-IMMUNO NOT AMEN RAD OFF PATH RSN
VA-ONC LUNG SQR 2ND CHEMO+/-IMMUNO NOT AMEN RAD OFF PATH TX
VA-ONC LUNG SQR 2ND CHEMO+/-IMMUNO NOT AMEN RAD DOCETAXEL
VA-ONC LUNG SQR 2ND CHEMO+/-IMMUNO NOT AMEN RAD CLINICAL TRIAL
VA-ONC LUNG SQR 2ND CHEMO+/-IMMUNO AMEN RAD OFF PATH REASON
VA-ONC LUNG SQR 2ND CHEMO+/-IMMUNO AMEN RAD OFF PATH TX
VA-ONC LUNG SQR 2ND CHEMO+/-IMMUNO AMEN RAD REFER RAD ONC
VA-ONC LUNG SQR 2ND CHEMO+/-IMMUNO AMEN RAD CLINICAL TRIAL
VA-ONC LUNG NSCLC STAGE IVA M1B/M1A PATHWAY [C]
VA-ONC LUNG IVA M1B/M1A AMEN DEF TX OFF PATHWAY REASON
VA-ONC LUNG IVA M1B/M1A AMEN DEF TX OFF PATHWAY TX
VA-ONC LUNG IVA M1B/M1A AMEN DEF TX REFER RAD ONC/ONC/SURG

VA-ONC LUNG IVA M1B/M1A AMEN DEF TX CLINICAL TRIAL
VA-ONC LUNG NON-SQUAMOUS RELAPSE PATHWAY [C]
VA-ONC LUNG NSR 2ND CHEMO+/-IMMUNO EGFR EXON 20 INS MOBOCERTINIB
VA-ONC LUNG NSR 2ND S/P IMMUNO PROG EGFREX20 MOBOCERTINIB
VA-ONC LUNG NSR 2ND CHEMO+/-IMMUNO HER2 OFF PATH RSN
VA-ONC LUNG NSR 2ND CHEMO+/-IMMUNO HER2 OFF PATH TX
VA-ONC LUNG NSR 2ND CHEMO+/-IMMUNO HER2 TRASTUZUMAB
VA-ONC LUNG NSR 2ND CHEMO+/-IMMUNO HER2 CLINICAL TRIAL
VA-ONC LUNG NSR 2ND S/P IMMUNO PROG HER2 OFF PATH RSN
VA-ONC LUNG NSR 2ND S/P IMMUNO PROG HER2 OFF PATH TX
VA-ONC LUNG NSR 2ND S/P IMMUNO PROG HER2 TRASTUZUMAB
VA-ONC LUNG NSR 2ND S/P IMMUNO PROG HER2 CLINICAL TRIAL
VA-ONC LUNG NSR 2ND CHEMO+/-IMMUNO KRAS G12 SOTORASIB
VA-ONC LUNG NSR 2ND S/P IMMUNO PROG NO KRASG12/EGFREX20 OFF RSN
VA-ONC LUNG NSR 2ND S/P IMMUNO PROG NO KRASG12/EGFRX20 OFF TX
VA-ONC LUNG NSR 2ND S/P IMMUNO PROG NO KRASG12/EGFREX20 DOC
VA-ONC LUNG NSR 2ND S/P IMMUNO PROG NO KRASG12/EGFREX20 CLIN TR
VA-ONC LUNG NSR 2ND S/P IMMUNO PROG EGFREX20 OFF PATH REASON
VA-ONC LUNG NSR 2ND S/P IMMUNO PROG EGFREX20 OFF PATH TREATMENT
VA-ONC LUNG NSR 2ND S/P IMMUNO PROG EGFREX20 AMIVANTAMAB
VA-ONC LUNG NSR 2ND S/P IMMUNO PROG EGFREX20 CLIN TRIAL
VA-ONC LUNG NSR 2ND CHEMO+/-IMMUNO NO KRASG12/EGFREX20 OFF RSN
VA-ONC LUNG NSR 2ND CHEMO+/-IMMUNO NO KRASG12/EGFREX20 OFF TX
VA-ONC LUNG NSR 2ND CHEMO+/-IMMUNO NO KRASG12/EGFREX20 DOCETAXEL
VA-ONC LUNG NSR 2ND CHEMO+/-IMMUNO NO KRASG12/EGFREX20 CLIN TR
VA-ONC LUNG NSR 2ND S/P IMMUNO PROG KRAS G12C OFF PATH RSN
VA-ONC LUNG NSR 2ND IMMUNO ALONE OFF PATHWAY REASON
VA-ONC LUNG NSR 2ND CHEMO+/-IMMUNO EGFR EXON 20 INS OFF PATH RSN
VA-ONC LUNG NSR 3RD LINE PREV DOCETAXEL OFF PATHWAY REASON
VA-ONC LUNG NSR 3RD LINE NO PREV DOCE TX OFF PATH REASON
VA-ONC LUNG NSR 2ND CHEMO+/-IMMUNO KRAS G12 OFF PATH REASON
VA-ONC LUNG NSR 3RD LINE PREV DOCETAXEL OFF PATHWAY TX
VA-ONC LUNG NSR 3RD LINE PREV DOCETAXEL REFER TO HOSPICE
VA-ONC LUNG NSR 3RD LINE PREV DOCETAXEL CLINICAL TRIAL
VA-ONC LUNG NSR 3RD LINE NO PREV DOCE TX OFF PATH TX
VA-ONC LUNG NSR 3RD LINE NO PREV DOCE TX DOCETAXEL
VA-ONC LUNG NSR 3RD LINE NO PREV DOCE TX CLINICAL TRIAL
VA-ONC LUNG NSR 2ND S/P IMMUNO PROG KRAS G12C OFF PATH TX
VA-ONC LUNG NSR 2ND S/P IMMUNO PROG KRAS G12C SOTORASIB
VA-ONC LUNG NSR 2ND S/P IMMUNO PROG KRAS G12C CLIN TRIAL
VA-ONC LUNG NSR 2ND IMMUNO ALONE OFF PATHWAY TX
VA-ONC LUNG NSR 2ND IMMUNO ALONE CARBOPLATIN+PEMET REXED
VA-ONC LUNG NSR 2ND CHEMO+/-IMMUNO EGFR EXON 20 INS OFF PATH TX
VA-ONC LUNG NSR 2ND IMMUNO ALONE CLINICAL TRIAL
VA-ONC LUNG NSR 2ND CHEMO+/-IMMUNO EGFR EXON 20 INS CLIN TRIAL
VA-ONC LUNG NSR 2ND CHEMO+/-IMMUNO KRAS G12 OFF PATH TX
VA-ONC LUNG NSR 2ND CHEMO+/-IMMUNO EGFR EXON 20 INS AMIVANTAMAB
VA-ONC LUNG NSR 2ND CHEMO+/-IMMUNO KRAS G12 CLINICAL TRIAL
VA-ONC LUNG IVA/IVB MUTATION NEGATIVE PATHWAY [C]
VA-ONC LUNG IVA/IVB NEG MUT PDL1>=50 CHEMO PEMBROLIZUMAB ALONE
VA-ONC LUNG IVA/IVB NEG MUT NO IMMUNO OFF PATHWAY TX

VA-ONC LUNG IVA/IVB NEG MUT NO IMMUNO CLINICAL TRIAL
VA-ONC LUNG IVA/IVB NEG MUT NO IMMUNO OFF PATHWAY REASON
VA-ONC LUNG IVA/IVB NEG MUT NO IMMUNO CARBO+PEM
VA-ONC LUNG IVA/IVB NEG MUT PDL1>=50 CHEMO OFF PATHWAY REASON
VA-ONC LUNG IVA/IVB NEG MUT PDL1>1 NO CHEMO OFF PATHWAY REASON
VA-ONC LUNG IVA/IVB NEG MUT PDL1<50 CHEMO OFF PATHWAY REASON
VA-ONC LUNG IVA/IVB NEG MUT PDL1>1 NO CHEMO OFF PATHWAY TX
VA-ONC LUNG IVA/IVB NEG MUT PDL1>1 NO CHEMO PEMBRO ALONE
VA-ONC LUNG IVA/IVB NEG MUT PDL1>=50 CHEMO OFF PATHWAY TX
VA-ONC LUNG IVA/IVB NEG MUT PDL1>=50 CHEMO CLINICAL TRIAL
VA-ONC LUNG IVA/IVB NEG MUT PDL1>1 NO CHEMO CLINICAL TRIAL
VA-ONC LUNG IVA/IVB NEG MUT PDL1>=50 CHEMO PEMBRO+CARBO+PEMETREX
VA-ONC LUNG IVA/IVB NEG MUT PDL1<50 CHEMO OFF PATHWAY TX
VA-ONC LUNG IVA/IVB NEG MUT PDL1<50 CHEMO PEMBRO+CARBO+PEMETREX
VA-ONC LUNG IVA/IVB NEG MUT PDL1<50 CHEMO CLINICAL TRIAL
VA-ONC LUNG IVA/IVB MUTATION POSITIVE PATHWAY [C]
VA-ONC LUNG IVA/IVB SUB POS MUT EGFR 19/21 L858R OFF PATH REASON
VA-ONC LUNG IVA/IVB SUB POS MUT EGFR 19/21 L858R OFF PATH TX
VA-ONC LUNG IVA/IVB SUB POS MUT EGFR 19/21 L858R DOCETAXEL
VA-ONC LUNG IVA/IVB SUB POS MUT EGFR 19/21 L858R CLINICAL TRIAL
VA-ONC LUNG IVA/IVB SUB POS MUT ALL OTHER MUT OFF PATHWAY RSN
VA-ONC LUNG IVA/IVB SUB POS MUT ALK GENE FUSION OFF PATHWAY RSN
VA-ONC LUNG IVA/IVB 2ND POS MUT ALL OTHER MUT OFF PATHWAY REASON
VA-ONC LUNG IVA/IVB 2ND POS MUT EXON19/21 L858R OFF PATHWAY RSN
VA-ONC LUNG IVA/IVB 2ND POS MUT ALK GENE FUSION OFF PATHWAY RSN
VA-ONC LUNG IVA/IVB 1ST POS MUT ROS1 GENE FUSION OFF PATHWAY RSN
VA-ONC LUNG IVA/IVB 1ST POS MUT RET REARRANGE OFF PATHWAY REASON
VA-ONC LUNG IVA/IVB 1ST POS MUT NTRK GENE FUSION OFF PATHWAY RSN
VA-ONC LUNG IVA/IVB 1ST POS MUT MET EXON 14 SKIP OFF PATHWAY RSN
VA-ONC LUNG IVA/IVB 1ST POS MUT EGFR 19/21 L858R OFF PATHWAY RSN
VA-ONC LUNG IVA/IVB 1ST POS MUT BRAF V600E OFF PATHWAY REASON
VA-ONC LUNG IVA/IVB 1ST POS MUT ALK GENE FUSION OFF PATHWAY RSN
VA-ONC LUNG IVA/IVB 1ST POS MUT NTRK GENE FUSION ENTRECTINIB
VA-ONC LUNG IVA/IVB SUB POS MUT ALL OTHER MUT OFF PATHWAY TX
VA-ONC LUNG IVA/IVB SUB POS MUT ALL OTHER MUT DOCETAXEL
VA-ONC LUNG IVA/IVB SUB POS MUT ALL OTHER MUT CLINICAL TRIAL
VA-ONC LUNG IVA/IVB SUB POS MUT ALK GENE FUSION OFF PATHWAY TX
VA-ONC LUNG IVA/IVB SUB POS MUT ALK GENE FUSION DOCETAXEL
VA-ONC LUNG IVA/IVB SUB POS MUT ALK GENE FUSION CARBO+PEM+/-CI
VA-ONC LUNG IVA/IVB SUB POS MUT ALK GENE FUSION CLINICAL TRIAL
VA-ONC LUNG IVA/IVB 2ND POS MUT ALL OTHER MUT OFF PATHWAY TX
VA-ONC LUNG IVA/IVB 2ND POS MUT ALL OTHER MUT CARBO+PEM+/-CI
VA-ONC LUNG IVA/IVB 2ND POS MUT ALL OTHER MUT CLINICAL TRIAL
VA-ONC LUNG IVA/IVB 2ND POS MUT ALK GENE FUSION OFF PATHWAY TX
VA-ONC LUNG IVA/IVB 2ND POS MUT ALK GENE FUSION LORLATINIB
VA-ONC LUNG IVA/IVB 2ND POS MUT ALK GENE FUSION CLINICAL TRIAL
VA-ONC LUNG IVA/IVB 2ND POS MUT EXON19/21 L858R OFF PATHWAY TX
VA-ONC LUNG IVA/IVB 2ND POS MUT EXON19/21 L858R CARBO+PEM+/-CI
VA-ONC LUNG IVA/IVB 2ND POS MUT EXON19/21 L858R CLINICAL TRIAL
VA-ONC LUNG IVA/IVB 1ST POS MUT NON STANDARD NPOP CONSULT
VA-ONC LUNG IVA/IVB 1ST POS MUT NTRK GENE FUSION OFF PATHWAY TX

VA-ONC LUNG IVA/IVB 1ST POS MUT NTRK GENE FUSION CLINICAL TRIAL
 VA-ONC LUNG IVA/IVB 1ST POS MUT BRAF V600E OFF PATHWAY TX
 VA-ONC LUNG IVA/IVB 1ST POS MUT BRAF V600E DABRAFENIB+TRAMETINIB
 VA-ONC LUNG IVA/IVB 1ST POS MUT BRAF V600E CLINICAL TRIAL
 VA-ONC LUNG IVA/IVB 1ST POS MUT ROS1 GENE FUSION OFF PATHWAY TX
 VA-ONC LUNG IVA/IVB 1ST POS MUT ROS1 GENE FUSION ENTRECTINIB
 VA-ONC LUNG IVA/IVB 1ST POS MUT ROS1 GENE FUSION CLINICAL TRIAL
 VA-ONC LUNG IVA/IVB 1ST POS MUT RET REARRANGE OFF PATHWAY TX
 VA-ONC LUNG IVA/IVB 1ST POS MUT RET REARRANGE SELPERCATNIB
 VA-ONC LUNG IVA/IVB 1ST POS MUT RET REARRANGE CLINICAL TRIAL
 VA-ONC LUNG IVA/IVB 1ST POS MUT MET EXON 14 SKIP OFF PATHWAY TX
 VA-ONC LUNG IVA/IVB 1ST POS MUT MET EXON 14 SKIP CAPMATINIB
 VA-ONC LUNG IVA/IVB 1ST POS MUT MET EXON 14 SKIP CLINICAL TRIAL
 VA-ONC LUNG IVA/IVB 1ST POS MUT ALK GENE FUSION OFF PATHWAY TX
 VA-ONC LUNG IVA/IVB 1ST POS MUT ALK GENE FUSION ALECTINIB
 VA-ONC LUNG IVA/IVB 1ST POS MUT ALK GENE FUSION CLINICAL TRIAL
 VA-ONC LUNG IVA/IVB 1ST POS MUT EGFR 19/21 L858R OFF PATHWAY TX
 VA-ONC LUNG IVA/IVB 1ST POS MUT EGFR 19/21 L858R OSIMERTINIB
 VA-ONC LUNG IVA/IVB 1ST POS MUT EGFR 19/21 L858R CLINICAL TRIAL
 VA-ONC LUNG SQUAMOUS STAGE IVB PATHWAY [C]
 VA-ONC LUNG SQUIVB PDL1 >=50% PEM ALONE
 VA-ONC LUNG SQUIVB NO IMMUNO\NO CHEMO OFF PATH REASON
 VA-ONC LUNG SQUIVB NO IMMUNO\NO CHEMO OFF PATH TX
 VA-ONC LUNG SQUIVB NO IMMUNO\NO CHEMO REFER HOSPICE
 VA-ONC LUNG SQUIVB NO IMMUNO\NO CHEMO CLINICAL TRIAL
 VA-ONC LUNG SQUIVB PD-L1>=1% IMMUNO ONLY OFF PATH REASON
 VA-ONC LUNG SQUIVB PD-L1>=1% IMMUNO ONLY OFF PATH TX
 VA-ONC LUNG SQUIVB PD-L1>=1% IMMUNO ONLY PEMBRO
 VA-ONC LUNG SQUIVB PD-L1>=1% IMMUNO ONLY CLINICAL TRIAL
 VA-ONC LUNG SQUIVB CHEMO ONLY OFF PATH REASON
 VA-ONC LUNG SQUIVB CHEMO ONLY OFF PATH TX
 VA-ONC LUNG SQUIVB CHEMO ONLY CARBO+PAC
 VA-ONC LUNG SQUIVB CHEMO ONLY CLINICAL TRIAL
 VA-ONC LUNG SQUIVB PDL1 >=50% OFF PATHWAY REASON
 VA-ONC LUNG SQUIVB PDL1 >=50% OFF PATHWAY TX
 VA-ONC LUNG SQUIVB PDL1 >=50% PEM+CARBO+PAC +PEM MAIN
 VA-ONC LUNG SQUIVB PDL1 >=50% CLINICAL TRIAL
 VA-ONC LUNG SQUIVB PDL1 0-49% OFF PATHWAY REASON
 VA-ONC LUNG SQUIVB PDL1 0-49% OFF PATHWAY TX
 VA-ONC LUNG SQUIVB PDL1 0-49% PEM+CARBO+PAC
 VA-ONC LUNG SQUIVB PDL1 0-49% CLINICAL TRIAL
 VA-ONC LUNG SQUIVB NO SMOKE/MIXED/SMALL/CLIN IND MOLECULAR TEST
 VA-ONC LUNG SQUIVB SYMPTOMATIC REFER RAD ONC
 VA-ONC LUNG METASTATIC NSCLC MOLECULAR TESTING [C]
 VA-ONC LUNG TISSUE SUFFICIENCY UNKNOWN
 VA-ONC LUNG CGP ORDER FUTURE DATE
 VA-ONC LUNG PD-L1 ORDER FUTURE DATE
 VA-ONC LUNG LIQUID BIOPSY: ON PATH
 VA-ONC LUNG TISSUE SUFFICIENT: OFF PATH
 VA-ONC LUNG REASSESS: ON PATH
 VA-ONC LUNG REPEAT BIOPSY: ON PATH

VA-ONC LUNG TISSUE SUFFICIENT: ON PATH
VA-ONC LUNG CGP ORDER: OFF PATH
VA-ONC LUNG CGP ORDER: ON PATH
VA-ONC LUNG PD-L1 ORDER: OFF PATH
VA-ONC LUNG PD-L1 ORDER: ON PATH
VA-ONC LUNG NSCLC STAGE III UNRESECTABLE CLINICAL PATHWAY [C]
VA-ONC LUNG NSCLC III UNRESECT S/P CHEMO OFF PATH RSN
VA-ONC LUNG NSCLC III UNRESECT S/P CHEMO OFF PATH TX
VA-ONC LUNG NSCLC III UNRESECT S/P CHEMO SURVEILLANCE
VA-ONC LUNG NSCLC III UNRESECT S/P CHEMO CLINICAL TRIAL
VA-ONC LUNG NSCLC III UNRESECT SUB NO IMMUNO OFF PATH RSN
VA-ONC LUNG NSCLC III UNRESECT SUB NO IMMUNO OFF PATH TX
VA-ONC LUNG NSCLC III UNRESECT SUB NO IMMUNO SURVEILLANCE
VA-ONC LUNG NSCLC III UNRESECT SUB NO IMMUNO CLIN TRIAL
VA-ONC LUNG NSCLC III UNRESECT SUB IMMUNO OFF PATH RSN
VA-ONC LUNG NSCLC III UNRESECT SUB IMMUNO OFF PATH TX
VA-ONC LUNG NSCLC III UNRESECT SUB IMMUNO DURVALUMAB
VA-ONC LUNG NSCLC III UNRESECT SUB IMMUNO CLIN TRIAL
VA-ONC LUNG NSCLC III UNRESECT INI SQU OFF PATH RSN
VA-ONC LUNG NSCLC III UNRESECT INI SQU OFF PATH TX
VA-ONC LUNG NSCLC III UNRESECT INI SQU CARBO+PAC+RAD
VA-ONC LUNG NSCLC III UNRESECT INI SQU CLINICAL TRIAL
VA-ONC LUNG NSCLC III UNRESECT INI NSQ OFF PATH RSN
VA-ONC LUNG NSCLC III UNRESECT INI NSQ OFF PATH TX
VA-ONC LUNG NSCLC III UNRESECT INI NSQ CARBO+PEM+RAD
VA-ONC LUNG NSCLC III UNRESECT INI NSQ CLINICAL TRIAL
VA-ONC LUNG NSCLC III UNRESECT INI CON RAD OFF PATH RSN
VA-ONC LUNG NSCLC III UNRESECT INI CON RAD OFF PATH TX
VA-ONC LUNG NSCLC III UNRESECT INI CON RAD CARBO+PAC+RAD
VA-ONC LUNG NSCLC III UNRESECT INI CON RAD CLINICAL TRIAL
VA-ONC LUNG PANCOAST CLINICAL PATHWAY [C]
VA-ONC LUNG PAN NO SURG/YES CON CIS/ETO OFF PATH RSN
VA-ONC LUNG PAN NO SURG/YES CON CIS/ETO OFF PATH TX
VA-ONC LUNG PAN NO SURG/YES CON CIS/ETO ARBO+PAC+RAD+DURVALUMAB
VA-ONC LUNG PAN NO SURG/YES CON CIS/ETO CLINICAL TRIAL
VA-ONC LUNG PAN NO SURG/NO CON CIS/ETO OFF PATH RSN
VA-ONC LUNG PAN NO SURG/NO CON CIS/ETO OFF PATH TX
VA-ONC LUNG PAN NO SURG/NO CON CIS/ETO +RAD+DURVALUMAB
VA-ONC LUNG PAN SURG/YES CON CIS/ETO OFF PATH RSN
VA-ONC LUNG PAN NO SURG/NO CON CIS/ETO CLINICAL TRIAL
VA-ONC LUNG PAN SURG/YES CON CIS/ETO OFF PATH TX
VA-ONC LUNG PAN SURG/YES CON CIS/ETO CARBO+PAC+RAD+SURG
VA-ONC LUNG PAN SURG/YES CON CIS/ETO CLINICAL TRIAL
VA-ONC LUNG PAN SURG/NO CON CIS/ETO OFF PATH RSN
VA-ONC LUNG PAN SURG/NO CON CIS/ETO OFF PATH TX
VA-ONC LUNG PAN SURG/NO CON CIS/ETO +RAD+SURG
VA-ONC LUNG PAN SURG/NO CON CIS/ETO CLINICAL TRIAL
VA-ONC LUNG NSCLC IIIA CLINICAL PATHWAY [C]
VA-ONC LUNG NSCLC IIIA R1/R2 NO RRS OFF PATH RSN
VA-ONC LUNG NSCLC IIIA R1/R2 NO RRS OFF PATH TX
VA-ONC LUNG NSCLC IIIA R1/R2 NO RRS REF RADONC

VA-ONC LUNG NSCLC IIIA R1/R2 NO RRS CLIN TRIAL
VA-ONC LUNG NSCLC IIIA R1/R2 RRS OFF PATH RSN
VA-ONC LUNG NSCLC IIIA R1/R2 RRS OFF PATH TX
VA-ONC LUNG NSCLC IIIA R1/R2 RRS RERESECT
VA-ONC LUNG NSCLC IIIA R1/R2 RRS CLIN TRIAL
VA-ONC LUNG NSCLC IIIA R0 OFF PATH RSN
VA-ONC LUNG NSCLC IIIA R0 OFF PATH TX
VA-ONC LUNG NSCLC IIIA R0 SURVEILLANCE
VA-ONC LUNG NSCLC IIIA R0 CLIN TRIAL
VA-ONC LUNG NSCLC IIIA NO PROG OFF PATH RSN
VA-ONC LUNG NSCLC IIIA NO PROG OFF PATH TX
VA-ONC LUNG NSCLC IIIA NO PROG SURGERY
VA-ONC LUNG NSCLC IIIA NO PROG CLIN TRIAL
VA-ONC LUNG NSCLC IIIA INITIAL TX SQU OFF PATH RSN
VA-ONC LUNG NSCLC IIIA INITIAL TX SQU OFF PATH TX
VA-ONC LUNG NSCLC IIIA INITIAL TX SQU CIS+DOCETAXEL
VA-ONC LUNG NSCLC IIIA INITIAL TX SQU CLIN TRIAL
VA-ONC LUNG NSCLC IIIA INITIAL TX NSQ OFF PATH RSN
VA-ONC LUNG NSCLC IIIA INITIAL TX NSQ OFF PATH TX
VA-ONC LUNG NSCLC IIIA INITIAL TX NSQ CIS+PEMETREXED
VA-ONC LUNG NSCLC IIIA INITIAL TX NSQ CLIN TRIAL
VA-ONC LUNG NSCLC IIA/IIB CLINICAL PATHWAY [C]
VA-ONC LUNG NSCLC IIA/IIB R1/R2 NO RRS SQU OFF PATH RSN
VA-ONC LUNG NSCLC IIA/IIB POST RESECT SQU OFF PATH RSN
VA-ONC LUNG NSCLC IIA/IIB POST RESECT SQU OFF PATH TX
VA-ONC LUNG NSCLC IIA/IIB POST RESECT SQU CIS+DOC+REF RAD ONC
VA-ONC LUNG NSCLC IIA/IIB POST RESECT SQU CLINICAL TRIAL
VA-ONC LUNG NSCLC IIA/IIB POST RESECT NSQ OFF PATH RSN
VA-ONC LUNG NSCLC IIA/IIB POST RESECT NSQ OFF PATH TX
VA-ONC LUNG NSCLC IIA/IIB POST RESECT NSQ CIS+PEME+REF RAD ONC
VA-ONC LUNG NSCLC IIA/IIB POST RESECT NSQ CLINICAL TRIAL
VA-ONC LUNG NSCLC IIA/IIB R1/R2 NO RRS SQU OFF PATH TX
VA-ONC LUNG NSCLC IIA/IIB R1/R2 NO RRS SQU CIS+DOC+RAD ONC
VA-ONC LUNG NSCLC IIA/IIB R1/R2 NO RRS SQU CLIN TRIAL
VA-ONC LUNG NSCLC IIA/IIB R1/R2 NO RRS NSQ OFF PATH RSN
VA-ONC LUNG NSCLC IIA/IIB R1/R2 NO RRS NSQ OFF PATH TX
VA-ONC LUNG NSCLC IIA/IIB R1/R2 NO RRS NSQ CIS+PEME+RAD ONC
VA-ONC LUNG NSCLC IIA/IIB R1/R2 NO RRS NSQ CLIN TRIAL
VA-ONC LUNG NSCLC IIA/IIB R1/R2 RRS OFF PATH RSN
VA-ONC LUNG NSCLC IIA/IIB R1/R2 RRS OFF PATH TX
VA-ONC LUNG NSCLC IIA/IIB R1/R2 RRS RERESECT
VA-ONC LUNG NSCLC IIA/IIB R1/R2 RRS CLIN TRIAL
VA-ONC LUNG NSCLC IIA/IIB R0 SQU OFF PATH RSN
VA-ONC LUNG NSCLC IIA/IIB R0 SQU OFF PATH TX
VA-ONC LUNG NSCLC IIA/IIB R0 SQU CLIN TRIAL
VA-ONC LUNG NSCLC IIA/IIB R0 NSQ OFF PATH RSN
VA-ONC LUNG NSCLC IIA/IIB R0 NSQ OFF PATH TX
VA-ONC LUNG NSCLC IIA/IIB R0 NSQ CIS+PEME
VA-ONC LUNG NSCLC IIA/IIB R0 SQU CIS+DOCE
VA-ONC LUNG NSCLC IIA/IIB R0 NSQ CLIN TRIAL
VA-ONC LUNG NSCLC IIA/IIB NO SURG OFF PATH RSN

VA-ONC LUNG NSCLC IIA/IIB NO SURG OFF PATH TX
VA-ONC LUNG NSCLC IIA/IIB NO SURG REF ONC/RAD ONC
VA-ONC LUNG NSCLC IIA/IIB NO SURG CLIN TRIAL
VA-ONC LUNG NSCLC IIA/IIB SURG OFF PATH RSN
VA-ONC LUNG NSCLC IIA/IIB SURG OFF PATH TX
VA-ONC LUNG NSCLC IIA/IIB SURG RESECTION
VA-ONC LUNG NSCLC IIA/IIB SURG CLINICAL TRIAL
VA-ONC LUNG NSCLC STAGE IA/IB PATHWAY[C]
VA-ONC LUNG NSCLC PATH IB NEG MARG CLIN TRIAL
VA-ONC LUNG NSCLC PATH IB POS MARG NO RERESECT OFF PATH RSN
VA-ONC LUNG NSCLC PATH IB POS MARG NO RERESECT OFF PATH TX
VA-ONC LUNG NSCLC PATH IB POS MARG NO RERESECT REF RAD ONC
VA-ONC LUNG NSCLC PATH IB POS MARG NO RERESECT CLINICAL TRIAL
VA-ONC LUNG NSCLC PATH IB POS MARG RERESECT OFF PATH RSN
VA-ONC LUNG NSCLC PATH IB POS MARG RERESECT OFF PATH TX
VA-ONC LUNG NSCLC PATH IB POS MARG RERESECT
VA-ONC LUNG NSCLC PATH IB POS MARG RERESECT CLIN TRIAL
VA-ONC LUNG NSCLC PATH IB NEG MARG OFF PATHWAY RSN
VA-ONC LUNG NSCLC PATH IB NEG MARG OFF PATHWAY TX
VA-ONC LUNG NSCLC PATH IB NEG MARG SURVEILLANCE
VA-ONC LUNG NSCLC PATH IB NEG MARG CLINICAL TRIAL
VA-ONC LUNG NSCLC PATH IA POS MARG NO RERESECT OFF PATH RSN
VA-ONC LUNG NSCLC PATH IA POS MARG NO RERESECT OFF PATH TX
VA-ONC LUNG NSCLC PATH IA POS MARG NO RERESECT REF RAD ONC
VA-ONC LUNG NSCLC PATH IA POS MARG NO RERESECT CLINICAL TRIAL
VA-ONC LUNG NSCLC PATH IA POS MARG RERESECT OFF PATH RSN
VA-ONC LUNG NSCLC PATH IA POS MARG RERESECT OFF PATH TX
VA-ONC LUNG NSCLC PATH IA POS MARG RERESECT
VA-ONC LUNG NSCLC PATH IA POS MARG RERESECT CLIN TRIAL
VA-ONC LUNG NSCLC PATH IA NEG MARGINS OFF PATH RSN
VA-ONC LUNG NSCLC PATH IA NEG MARGINS OFF PATH TX
VA-ONC LUNG NSCLC PATH IA NEG MARGINS SURVEILLANCE
VA-ONC LUNG NSCLC PATH IA NEG MARGINS CLIN TRIAL
VA-ONC LUNG NSCLC IA/IB SURG NO OFF PATH RSN
VA-ONC LUNG NSCLC IA/IB SURG NO OFF PATH TX
VA-ONC LUNG NSCLC IA/IB SURG NO REF RAD ONC
VA-ONC LUNG NSCLC IA/IB SURG NO CLIN TRIAL
VA-ONC LUNG NSCLC IA/IB SURG OFF PATH RSN
VA-ONC LUNG NSCLC IA/IB SURG OFF PATH TX
VA-ONC LUNG NSCLC IA/IB SURG LOBECTOMY
VA-ONC LUNG NSCLC IA/IB SURG CLIN TRIAL
VA-ONCOLOGY PATHWAYS [C]
VA-ONC LUNG SCLC RELAPSE PATHWAY
VA-ONC LUNG SCLC LIMITED STAGE 1ST LINE PATHWAY
VA-ONC LUNG SCLC EXTENSIVE STAGE CLINICAL PATHWAY
VA-ONC LUNG SCLC INCIDENTAL DISCOVERY PATHWAY
VA-ONC LUNG SQUAMOUS RELAPSE PATHWAY
VA-ONC LUNG NON-SQUAMOUS RELAPSE PATHWAY
VA-ONC LUNG NSCLC STAGE III UNRESECTABLE CLINICAL PATHWAY
VA-ONC LUNG PANCOAST CLINICAL PATHWAY
VA-ONC LUNG NSCLC IIIA CLINICAL PATHWAY

VA-ONC LUNG NSCLC IIA/IIB CLINICAL PATHWAY
VA-ONC LUNG NSCLC STAGE IA/IB PATHWAY
VA-ONC LUNG SQUAMOUS STAGE IVB PATHWAY
VA-ONC LUNG IVA/IVB MUTATION NEGATIVE PATHWAY
VA-ONC LUNG IVA/IVB MUTATION POSITIVE PATHWAY
VA-ONC LUNG NSCLC STAGE IVA M1B/M1A PATHWAY
VA-ONC LUNG MOLECULAR TESTING

REMINDER TERM

VA-REMINDER UPDATE_2_0_246

HEALTH SUMMARY TYPE

VA-ONCOLOGY PATHWAYS (HS)
VA-ONCOLOGY PATHWAYS LUNG (HS)

HEALTH SUMMARY OBJECTS

VA-ONCOLOGY PATHWAYS (TIU)
VA-ONCOLOGY PATHWAYS LUNG (TIU)

TIU DOCUMENT DEFINITION

VA-ONCOLOGY PATHWAYS
VA-ONCOLOGY PATHWAYS LUNG

REMINDER DIALOG

VA-ONCOLOGY LUNG SCLC PATHWAYS
VA-ONCOLOGY LUNG RELAPSE PATHWAYS
VA-ONCOLOGY LUNG LOCALLY ADVANCED PATHWAYS
VA-ONCOLOGY LUNG EARLY STAGE PATHWAYS
VA-ONCOLOGY LUNG FIRST LINE METS STAGE IV PATHWAYS
VA-ONCOLOGY LUNG PATHWAY

Pre-Install

Using the Vista Menu, Reminder Dialog Manager, DI- Reminder Dialog, change view to element view, inquire into the following reminder dialog elements and identify any quick orders or menus that have been added as an additional finding. Your site may have not added any orders to these items. The orders identified will need to be added back post install.

VA-EL ONC LUNG ON PDL1
VA-EL ONC LUNG PTHWY NGS ON
VA-EL ONC LUNG ON PATHWAY TISSUE SUFF
VA-EL ONC LUNG PATHWAY REPEAT BIOPSY
VA-EL ONC LUNG PTHWY LIQUID BIOPSY

Install Details

This update is being distributed as a web host file. The address for the host file is:

https://REDACTED /UPDATE_2_0_246.PRD

The file will be installed using Reminder Exchange, programmer access is not required.

Installation:

=====

This update can be loaded with users on the system. Installation will take less than 20 minutes.

Install Example

To Load the Web Host File. Navigate to Reminder exchange in Vista

```
+          + Next Screen  - Prev Screen  ?? More Actions  >>>
CFE  Create Exchange File Entry      LHF  Load Host File
CHF  Create Host File                 LMM  Load MailMan Message
CMM  Create MailMan Message           LR   List Reminder Definitions
DFE  Delete Exchange File Entry       LWH  Load Web Host File
IFE  Install Exchange File Entry      RI   Reminder Definition Inquiry
IH   Installation History             RP   Repack
Select Action: Next Screen// LWH   Load Web Host File
Input the URL for the .prd file: https://[REDACTED]/UPDATE_2_0_246.PRD
```

At the **Select Action:** prompt, enter **LWH** for Load Web Host File

At the **Input the url for the .prd file:** prompt, type the following web address:

https://REDACTED/UPDATE_2_0_246.PRD

You should see a message at the top of your screen that the file successfully loaded.

```
https://[REDACTED]/UPDATE_2_0_246.PRD successfully loaded.
```

Search and locate an entry titled **UPDATE_2_0_246 VA-ONC CLINICAL PATHWAYS – LUNG CANCER** in reminder exchange.

```

+Item  Entry                               Source                               Date Packed
303    UPDATE_2_0_246 VA-ONC
        CLINICAL PATHWAYS - LUNG
        CANCER
304    UPDATE_2_0_247 VA-HOME
        TELEHEALTH ZBI UPDATE
305    UPDATE_2_0_248 VA-GERIATRIC
        ED NOTE TEMPLATE UPDATE
306    UPDATE_2_0_250 VA-TERATOGENIC
        MEDS ORDER CHECKS UPDATE
        2022_01
+      + Next Screen  - Prev Screen  ?? More Actions  >>>
CFE    Create Exchange File Entry      LHF  Load Host File
CHF    Create Host File                 LMM  Load MailMan Message
CMM    Create MailMan Message           LR   List Reminder Definitions
DFE    Delete Exchange File Entry       LWH  Load Web Host File
IFE    Install Exchange File Entry      RI   Reminder Definition Inquiry
IH     Installation History              RP   Repack
Select Action: Next Screen// IFE  Install Exchange File Entry
Enter a list or range of numbers (1-572): 303

```

At the **Select Action** prompt, enter **IFE** for Install Exchange File Entry
 Enter the number that corresponds with your entry UPDATE_2_0_246 VA-ONC CLINICAL PATHWAYS – LUNG CANCER (*in this example it is entry 303. It will vary by site*). The date of the exchange file should be 04/19/2022.

```

Component                               Category                               Exists
Source:
Date Packed:
Package Version: 2.0P71

Description:
The following Clinical Reminder items were selected for packing:
REMINDER DIALOG
  VA-ONCOLOGY LUNG PATHWAY
  VA-ONCOLOGY LUNG FIRST LINE METS STAGE IV PATHWAYS
  VA-ONCOLOGY LUNG EARLY STAGE PATHWAYS
  VA-ONCOLOGY LUNG LOCALLY ADVANCED PATHWAYS
  VA-ONCOLOGY LUNG RELAPSE PATHWAYS
  VA-ONCOLOGY LUNG SCLC PATHWAYS

REMINDER TERM
  VA-REMINDER UPDATE_2_0_246
+      Enter ?? for more actions  >>>
IA    Install all Components        IS    Install Selected Component
Select Action: Next Screen// IA

```

At the **Select Action** prompt, type **IA** for Install all Components and hit enter.
 Select Action: Next Screen// **IA Install all Components**
 You will see several prompts, for all new entries you will choose **I to Install**.
 If you are prompted to overwrite any entries, you will choose **O to Overwrite**.

You will be prompted to install the **FIRST reminder dialog component (VA-ONCOLOGY LUNG SCLC PATHWAYS)**. You will choose to install all even though some components may have an X to indicate that they exist.

```
Packed reminder dialog: VA-ONCOLOGY LUNG SCLC PATHWAYS [NATIONAL DIALOG]
+      + Next Screen  - Prev Screen  ?? More Actions
Item  Seq. Dialog Findings                                     Type  Exists
  1    VA-ONCOLOGY LUNG SCLC PATHWAYS                       dialog
  2    10 VA-GP ONC LUNG SCLC PATHWAYS MAIN                  group
      Finding: *NONE*
  3    10.10 VA-ONC LUNG SCLC PATHWAYS VERSION              element
      Finding: *NONE*
  4    10.30 VA-ONC LUNG PATHWAY INSTRUCTIONS/SHAREPOINT    element
      Finding: VIEW PROGRESS NOTE TEXT (REMINDER GENERAL FINDING)
  5    PXRМ GF VIEW BUTTON                                   prompt
  6    10.40 VA-ONC PATHWAYS PRIOR DATA OBJECT            element
      Finding: *NONE*
  7    10.50 VA-ONC PATHWAYS PREVIOUS DATA CLICK TO INCLUDE
      Finding: *NONE*
  8    10.60 VA-EL ONC DASHED LINE NO SHOW                 element
      Finding: *NONE*
+      + Next Screen  - Prev Screen  ?? More Actions
DD    Dialog Details      DT    Dialog Text      IS    Install Selected
DF    Dialog Findings    DU    Dialog Usage    QU    Quit
DS    Dialog Summary     IA    Install All
Select Action: Next Screen// IA
```

At the **Select Action** prompt, type **IA** to install the dialog: **VA-ONCOLOGY LUNG SCLC PATHWAYS**

Select Action: Next Screen// **IA Install All**

Install reminder dialog and all components with no further changes: Y// **Yes**

```
Packed reminder dialog: VA-ONCOLOGY LUNG SCLC PATHWAYS [NATIONAL DIALOG]
VA-ONCOLOGY LUNG SCLC PATHWAYS (reminder dialog) installed from exchange file.
+      + Next Screen  - Prev Screen  ?? More Actions
Item  Seq. Dialog Findings                                     Type  Exists
  1    VA-ONCOLOGY LUNG SCLC PATHWAYS                       dialog
  2    10 VA-GP ONC LUNG SCLC PATHWAYS MAIN                  group
      Finding: *NONE*
  3    10.10 VA-ONC LUNG SCLC PATHWAYS VERSION              element
      Finding: *NONE*
  4    10.30 VA-ONC LUNG PATHWAY INSTRUCTIONS/SHAREPOINT    element
      Finding: VIEW PROGRESS NOTE TEXT (REMINDER GENERAL FINDING)
  5    PXRМ GF VIEW BUTTON                                   prompt
  6    10.40 VA-ONC PATHWAYS PRIOR DATA OBJECT            element
      Finding: *NONE*
  7    10.50 VA-ONC PATHWAYS PREVIOUS DATA CLICK TO INCLUDE
      Finding: *NONE*
  8    10.60 VA-EL ONC DASHED LINE NO SHOW                 element
      Finding: *NONE*
+      + Next Screen  - Prev Screen  ?? More Actions
DD    Dialog Details      DT    Dialog Text      IS    Install Selected
DF    Dialog Findings    DU    Dialog Usage    QU    Quit
DS    Dialog Summary     IA    Install All
Select Action: Next Screen// Q
```

After completing this dialog install, you will type **Q**.

You will be prompted to install the next reminder dialog component (**VA-ONCOLOGY LUNG RELAPSE PATHWAYS**). You will choose to install all even though some components may have an X to indicate that they exist.

```
Packed reminder dialog: VA-ONCOLOGY LUNG RELAPSE PATHWAYS [NATIONAL DIALOG]
```

Item	Seq.	Dialog Findings	Type	Exists		
1		VA-ONCOLOGY LUNG RELAPSE PATHWAYS	dialog			
2	10	VA-GP ONC LUNG RELAPSE PATHWAYS MAIN Finding: *NONE*	group			
3	10.10	VA-ONC LUNG RELAPSE PATHWAYS VERSION Finding: *NONE*	element			
4	10.30	VA-ONC LUNG PATHWAY INSTRUCTIONS/SHAREPOINT Finding: VIEW PROGRESS NOTE TEXT (REMINDER GENERAL FINDING)	element	X		
5	10.40	VA-ONC PATHWAYS PRIOR DATA OBJECT Finding: *NONE*	element	X		
6	10.50	VA-ONC PATHWAYS PREVIOUS DATA CLICK TO INCLUDE Finding: *NONE*	element	X		
7	10.60	VA-EL ONC DASHED LINE NO SHOW Finding: *NONE*	element	X		
8	10.80	VA-GP ONC LUNG RELAPSE PATHWAYS SUBMAIN	group			
+ + Next Screen - Prev Screen ?? More Actions						
DD	Dialog	Details	DT	Dialog Text	IS	Install Selected
DF	Dialog	Findings	DU	Dialog Usage	QU	Quit
DS	Dialog	Summary	IA	Install All		
Select Action: Next Screen// IA						

At the **Select Action** prompt, type **IA** to install the dialog **VA-ONCOLOGY LUNG RELAPSE PATHWAYS**

Select Action: Next Screen// **IA Install All**

Install reminder dialog and all components with no further changes: Y// **Yes**

```
Packed reminder dialog: VA-ONCOLOGY LUNG RELAPSE PATHWAYS [NATIONAL DIALOG]
```

```
VA-ONCOLOGY LUNG RELAPSE PATHWAYS (reminder dialog) installed from exchange file
```

Item	Seq.	Dialog Findings	Type	Exists		
1		VA-ONCOLOGY LUNG RELAPSE PATHWAYS	dialog	X		
2	10	VA-GP ONC LUNG RELAPSE PATHWAYS MAIN Finding: *NONE*	group	X		
3	10.10	VA-ONC LUNG RELAPSE PATHWAYS VERSION Finding: *NONE*	element	X		
4	10.30	VA-ONC LUNG PATHWAY INSTRUCTIONS/SHAREPOINT Finding: VIEW PROGRESS NOTE TEXT (REMINDER GENERAL FINDING)	element	X		
5	10.40	VA-ONC PATHWAYS PRIOR DATA OBJECT Finding: *NONE*	element	X		
6	10.50	VA-ONC PATHWAYS PREVIOUS DATA CLICK TO INCLUDE Finding: *NONE*	element	X		
7	10.60	VA-EL ONC DASHED LINE NO SHOW Finding: *NONE*	element	X		
8	10.80	VA-GP ONC LUNG RELAPSE PATHWAYS SUBMAIN	group	X		
+ + Next Screen - Prev Screen ?? More Actions						
DD	Dialog	Details	DT	Dialog Text	IS	Install Selected
DF	Dialog	Findings	DU	Dialog Usage	QU	Quit
DS	Dialog	Summary	IA	Install All		
Select Action: Next Screen// Q						

After completing this dialog install, you will type **Q**.

You will be prompted to install the next reminder dialog component (**VA-ONCOLOGY LUNG LOCALLY ADVANCED PATHWAYS**). You will choose to install all even though some components may have an X to indicate that they exist.

```
Packed reminder dialog: VA-ONCOLOGY LUNG LOCALLY ADVANCED PATHWAYS [NATIONAL DIA
Item Seq. Dialog Findings Type Exists
1 VA-ONCOLOGY LUNG LOCALLY ADVANCED PATHWAYS dialog
2 10 VA-GP ONC LUNG LOCAL ADVANCE PATHWAYS MAIN group
Finding: *NONE*
3 10.10 VA-ONC LUNG LOCAL ADVANCE PATHWAYS VERSION element
Finding: *NONE*
4 10.30 VA-ONC LUNG PATHWAY INSTRUCTIONS/SHAREPOINT element X
Finding: VIEW PROGRESS NOTE TEXT (REMINDER GENERAL FINDING) X
5 10.40 VA-ONC PATHWAYS PRIOR DATA OBJECT element X
Finding: *NONE*
6 10.50 VA-ONC PATHWAYS PREVIOUS DATA CLICK TO INCLUDE element X
Finding: *NONE*
7 10.60 VA-EL ONC DASHED LINE NO SHOW element X
Finding: *NONE*
8 10.80 VA-GP ONC LUNG LOCAL ADVANCE PATHWAYS SUBMAIN group
+ + Next Screen - Prev Screen ?? More Actions
DD Dialog Details DT Dialog Text IS Install Selected
DF Dialog Findings DU Dialog Usage QU Quit
DS Dialog Summary IA Install All
Select Action: Next Screen// IA
```

At the **Select Action** prompt, type **IA** to install the dialog: **VA-ONCOLOGY LUNG LOCALLY ADVANCED PATHWAYS**

Select Action: Next Screen// **IA Install All**

Install reminder dialog and all components with no further changes: Y// **Yes**

```
Packed reminder dialog: VA-ONCOLOGY LUNG LOCALLY ADVANCED PATHWAYS [NATIONAL DIA
VA-ONCOLOGY LUNG LOCALLY ADVANCED PATHWAYS (reminder dialog) installed from exch
Item Seq. Dialog Findings Type Exists
1 VA-ONCOLOGY LUNG LOCALLY ADVANCED PATHWAYS dialog X
2 10 VA-GP ONC LUNG LOCAL ADVANCE PATHWAYS MAIN group X
Finding: *NONE*
3 10.10 VA-ONC LUNG LOCAL ADVANCE PATHWAYS VERSION element X
Finding: *NONE*
4 10.30 VA-ONC LUNG PATHWAY INSTRUCTIONS/SHAREPOINT element X
Finding: VIEW PROGRESS NOTE TEXT (REMINDER GENERAL FINDING) X
5 10.40 VA-ONC PATHWAYS PRIOR DATA OBJECT element X
Finding: *NONE*
6 10.50 VA-ONC PATHWAYS PREVIOUS DATA CLICK TO INCLUDE element X
Finding: *NONE*
7 10.60 VA-EL ONC DASHED LINE NO SHOW element X
Finding: *NONE*
8 10.80 VA-GP ONC LUNG LOCAL ADVANCE PATHWAYS SUBMAIN group X
+ + Next Screen - Prev Screen ?? More Actions
DD Dialog Details DT Dialog Text IS Install Selected
DF Dialog Findings DU Dialog Usage QU Quit
DS Dialog Summary IA Install All
Select Action: Next Screen// Q
```

After completing this dialog install, you will type **Q**.

You will be prompted to install the next reminder dialog component (**VA-ONCOLOGY LUNG EARLY STAGE PATHWAYS**). You will choose to install all even though some components may have an X to indicate that they exist.

Packed reminder dialog: **VA-ONCOLOGY LUNG EARLY STAGE PATHWAYS** [NATIONAL DIALOG]

Item	Seq.	Dialog Findings	Type	Exists
1		VA-ONCOLOGY LUNG EARLY STAGE PATHWAYS	dialog	
2	10	VA-GP ONC LUNG EARLY STAGE PATHWAYS MAIN Finding: *NONE*	group	
3	10.10	VA-ONC LUNG EARLY STAGE PATHWAYS VERSION Finding: *NONE*	element	
4	10.30	VA-ONC LUNG PATHWAY INSTRUCTIONS/SHAREPOINT Finding: VIEW PROGRESS NOTE TEXT (REMINDER GENERAL FINDING)	element	X
5	10.40	VA-ONC PATHWAYS PRIOR DATA OBJECT Finding: *NONE*	element	X
6	10.50	VA-ONC PATHWAYS PREVIOUS DATA CLICK TO INCLUDE Finding: *NONE*	element	X
7	10.60	VA-EL ONC DASHED LINE NO SHOW Finding: *NONE*	element	X
8	10.80	VA-GP ONC LUNG EARLY STAGE PATHWAYS SUBMAIN	group	

+ + Next Screen - Prev Screen ?? More Actions

DD	Dialog Details	DT	Dialog Text	IS	Install Selected
DF	Dialog Findings	DU	Dialog Usage	QU	Quit
DS	Dialog Summary	IA	Install All		

Select Action: Next Screen// IA

At the **Select Action** prompt, type **IA** to install the dialog: **VA-ONCOLOGY LUNG EARLY STAGE PATHWAYS**

Select Action: Next Screen// **IA Install All**

Install reminder dialog and all components with no further changes: Y// **Yes**

Packed reminder dialog: **VA-ONCOLOGY LUNG EARLY STAGE PATHWAYS** [NATIONAL DIALOG]
VA-ONCOLOGY LUNG EARLY STAGE PATHWAYS (reminder dialog) installed from exchange

Item	Seq.	Dialog Findings	Type	Exists
1		VA-ONCOLOGY LUNG EARLY STAGE PATHWAYS	dialog	X
2	10	VA-GP ONC LUNG EARLY STAGE PATHWAYS MAIN Finding: *NONE*	group	X
3	10.10	VA-ONC LUNG EARLY STAGE PATHWAYS VERSION Finding: *NONE*	element	X
4	10.30	VA-ONC LUNG PATHWAY INSTRUCTIONS/SHAREPOINT Finding: VIEW PROGRESS NOTE TEXT (REMINDER GENERAL FINDING)	element	X
5	10.40	VA-ONC PATHWAYS PRIOR DATA OBJECT Finding: *NONE*	element	X
6	10.50	VA-ONC PATHWAYS PREVIOUS DATA CLICK TO INCLUDE Finding: *NONE*	element	X
7	10.60	VA-EL ONC DASHED LINE NO SHOW Finding: *NONE*	element	X
8	10.80	VA-GP ONC LUNG EARLY STAGE PATHWAYS SUBMAIN	group	X

+ + Next Screen - Prev Screen ?? More Actions

DD	Dialog Details	DT	Dialog Text	IS	Install Selected
DF	Dialog Findings	DU	Dialog Usage	QU	Quit
DS	Dialog Summary	IA	Install All		

Select Action: Next Screen// Q

After completing this dialog install, you will type **Q**.

You will be prompted to install the next reminder dialog component (**VA-ONCOLOGY LUNG FIRST LINE METS STAGE IV PATHWAYS**). You will choose to install all even though some components may have an X to indicate that they exist.

```
Packed reminder dialog: VA-ONCOLOGY LUNG FIRST LINE METS STAGE IV PATHWAYS [NATI
```

Item	Seq.	Dialog Findings	Type	Exists
1		VA-ONCOLOGY LUNG FIRST LINE METS STAGE IV PATHWAYS	dialog	
2	10	VA-GP ONC LUNG 1ST LINE METS PATHWAYS MAIN Finding: *NONE*	group	
3	10.10	VA-ONC LUNG 1ST LINE METASTATIC PATHWAYS VERSION Finding: *NONE*	element	
4	10.30	VA-ONC LUNG PATHWAY INSTRUCTIONS/SHAREPOINT Finding: VIEW PROGRESS NOTE TEXT (REMINDER GENERAL FINDING)	element	X
5	10.40	VA-ONC PATHWAYS PRIOR DATA OBJECT Finding: *NONE*	element	X
6	10.50	VA-ONC PATHWAYS PREVIOUS DATA CLICK TO INCLUDE Finding: *NONE*	element	X
7	10.60	VA-EL ONC DASHED LINE NO SHOW Finding: *NONE*	element	X

```
+      + Next Screen  - Prev Screen  ?? More Actions
DD Dialog Details      DT Dialog Text      IS Install Selected
DF Dialog Findings    DU Dialog Usage    QU Quit
DS Dialog Summary     IA Install All
Select Action: Next Screen// IA
```

At the **Select Action** prompt, type **IA** to install the dialog **VA-ONCOLOGY LUNG FIRST LINE METS STAGE IV PATHWAYS**

Select Action: Next Screen// **IA Install All**

Install reminder dialog and all components with no further changes: Y// **Yes**

```
Packed reminder dialog: VA-ONCOLOGY LUNG FIRST LINE METS STAGE IV PATHWAYS [NATI
VA-ONCOLOGY LUNG FIRST LINE METS STAGE IV PATHWAYS (reminder dialog) installed f
```

Item	Seq.	Dialog Findings	Type	Exists
1		VA-ONCOLOGY LUNG FIRST LINE METS STAGE IV PATHWAYS	dialog	X
2	10	VA-GP ONC LUNG 1ST LINE METS PATHWAYS MAIN Finding: *NONE*	group	X
3	10.10	VA-ONC LUNG 1ST LINE METASTATIC PATHWAYS VERSION Finding: *NONE*	element	X
4	10.30	VA-ONC LUNG PATHWAY INSTRUCTIONS/SHAREPOINT Finding: VIEW PROGRESS NOTE TEXT (REMINDER GENERAL FINDING)	element	X
5	10.40	VA-ONC PATHWAYS PRIOR DATA OBJECT Finding: *NONE*	element	X
6	10.50	VA-ONC PATHWAYS PREVIOUS DATA CLICK TO INCLUDE Finding: *NONE*	element	X
7	10.60	VA-EL ONC DASHED LINE NO SHOW Finding: *NONE*	element	X

```
+      + Next Screen  - Prev Screen  ?? More Actions
DD Dialog Details      DT Dialog Text      IS Install Selected
DF Dialog Findings    DU Dialog Usage    QU Quit
DS Dialog Summary     IA Install All
Select Action: Next Screen// Q
```

After completing this dialog install, you will type **Q**.

You will be prompted to install the next reminder dialog component (**VA-ONCOLOGY LUNG PATHWAY**). You will choose to install all even though some components may have an X to indicate that they exist.

Packed reminder dialog: **VA-ONCOLOGY LUNG PATHWAY** [NATIONAL DIALOG]

Item	Seq.	Dialog Findings	Type	Exists
1		VA-ONCOLOGY LUNG PATHWAY	dialog	X
2	10	VA-GP ONC LUNG MOLECULAR TESTING MAIN Finding: *NONE*	group	
3	10.10	VA-EL ONC LUNG PTHWY HEADER Finding: VA-ONC LUNG MOLECULAR TESTING (HEALTH FACTOR)	element	X
4	10.30	VA-ONC LUNG PATHWAY INSTRUCTIONS/SHAREPOINT Finding: VIEW PROGRESS NOTE TEXT (REMINDER GENERAL FINDING)	element	X
5	10.40	VA-ONC PATHWAYS PRIOR DATA OBJECT Finding: *NONE*	element	X
6	10.50	VA-ONC PATHWAYS PREVIOUS DATA CLICK TO INCLUDE Finding: *NONE*	element	X
7	10.60	VA-EL ONC DASHED LINE NO SHOW Finding: *NONE*	element	X
8	10.80	VA-GP ONC LUNG MOLECULAR TESTING SUBMAIN	group	

+ + Next Screen - Prev Screen ?? More Actions

DD	Dialog Details	DT	Dialog Text	IS	Install Selected
DF	Dialog Findings	DU	Dialog Usage	QU	Quit
DS	Dialog Summary	IA	Install All		

Select Action: Next Screen// IA

At the **Select Action** prompt, type **IA** to install the dialog **VA-ONCOLOGY LUNG PATHWAY**

Select Action: Next Screen// **IA Install All**

Install reminder dialog and all components with no further changes: Y// **Yes**

Packed reminder dialog: **VA-ONCOLOGY LUNG PATHWAY** [NATIONAL DIALOG]
VA-ONCOLOGY LUNG PATHWAY (reminder dialog) installed from exchange file.

Item	Seq.	Dialog Findings	Type	Exists
1		VA-ONCOLOGY LUNG PATHWAY	dialog	X
2	10	VA-GP ONC LUNG MOLECULAR TESTING MAIN Finding: *NONE*	group	X
3	10.10	VA-EL ONC LUNG PTHWY HEADER Finding: VA-ONC LUNG MOLECULAR TESTING (HEALTH FACTOR)	element	X
4	10.30	VA-ONC LUNG PATHWAY INSTRUCTIONS/SHAREPOINT Finding: VIEW PROGRESS NOTE TEXT (REMINDER GENERAL FINDING)	element	X
5	10.40	VA-ONC PATHWAYS PRIOR DATA OBJECT Finding: *NONE*	element	X
6	10.50	VA-ONC PATHWAYS PREVIOUS DATA CLICK TO INCLUDE Finding: *NONE*	element	X
7	10.60	VA-EL ONC DASHED LINE NO SHOW Finding: *NONE*	element	X
8	10.80	VA-GP ONC LUNG MOLECULAR TESTING SUBMAIN	group	X

+ + Next Screen - Prev Screen ?? More Actions

DD	Dialog Details	DT	Dialog Text	IS	Install Selected
DF	Dialog Findings	DU	Dialog Usage	QU	Quit
DS	Dialog Summary	IA	Install All		

Select Action: Next Screen// Q

After completing this dialog install, you will type **Q**.

```

Component                                     Category   Exists
Source:
Date Packed:
Package Version: 2.0P71

Description:
The following Clinical Reminder items were selected for packing:
REMINDER DIALOG
  VA-ONCOLOGY LUNG PATHWAY
  VA-ONCOLOGY LUNG FIRST LINE METS STAGE IV PATHWAYS
  VA-ONCOLOGY LUNG EARLY STAGE PATHWAYS
  VA-ONCOLOGY LUNG LOCALLY ADVANCED PATHWAYS
  VA-ONCOLOGY LUNG RELAPSE PATHWAYS
  VA-ONCOLOGY LUNG SCLC PATHWAYS

REMINDER TERM
  VA-REMINDER UPDATE_2_0_246
+      + Next Screen  - Prev Screen  ?? More Actions  >>>
IA  Install all Components          IS  Install Selected Component
Select Action: Next Screen// Q

```

You will then be returned to this screen. At the **Select Action** prompt, type **Q**.

Install complete.

Post Installation

1. Setup of Note Titles.

The note titles to create to associate with this template are:

ONCOLOGY-EARLY STAGE LUNG CANCER PATHWAYS
ONCOLOGY-LOCALLY ADVANCED LUNG CANCER PATHWAYS
ONCOLOGY-FIRST LINE STAGE IV METASTATIC LUNG CANCER
PATHWAYS
ONCOLOGY-LUNG CANCER RELAPSE PATHWAYS
ONCOLOGY-SMALL CELL LUNG CANCER PATHWAYS

VHA Enterprise Standard Title: HEMATOLOGY AND ONCOLOGY NOTE

You should already have a note title created named ONCOLOGY-LUNG MOLECULAR TESTING PATHWAY

You can add these to your document class where progress notes used by Oncology are located. They should not be in your consult document class.

Note: Comprehensive information on Creating new Document Classes and Titles can be found beginning on page 54 of the TIU/ASU Implementation Guide at the following link: [http://www.va.gov/vdl/documents/Clinical/CPRS-Text Integration Utility \(TIU\)/tiuim.pdf](http://www.va.gov/vdl/documents/Clinical/CPRS-Text%20Integration%20Utility%20(TIU)/tiuim.pdf)

2. **Make the Dialog template available to be attached to a Personal or Shared template or to be able to attach the dialog to a progress note title. (You can use the LINK feature in this menu for steps 2 and 3 if you choose to)**

Select Reminder Managers Menu <TEST ACCOUNT> Option: **CP CPRS**

Reminder Configuration

- CA Add/Edit Reminder Categories
- CL CPRS Lookup Categories
- CS CPRS Cover Sheet Reminder List
- MH Mental Health Dialogs Active
- PN Progress Note Headers
- RA Reminder GUI Resolution Active
- TIU TIU Template Reminder Dialog Parameter**
- DEVL Evaluate Coversheet List on Dialog Finish
- DL Default Outside Location
- PT Position Reminder Text at Cursor
- LINK Link Reminder Dialog to Template
- TEST CPRS Coversheet Time Test
- NP New Reminder Parameters
- GEC GEC Status Check Active
- WH WH Print Now Active

Select CPRS Reminder Configuration <TEST ACCOUNT> Option: **TIU TIU**

Template Reminder Dialog Parameter

Reminder Dialogs allowed as Templates may be set for the following:

- 1 User USR [choose from NEW PERSON]
- 3 Service SRV [choose from SERVICE/SECTION]
- 4 Division DIV [SALT LAKE CITY]
- 5 System SYS [NATREM.FO-SLC.MED.VA.GOV]

Enter selection: **5** *Choose the appropriate number for your site. Your site may do this by System or other levels. The example below uses SYSTEM level.*

Setting Reminder Dialogs allowed as Templates for System: NATREM.FO-SLC.MED.VA.GOV

Select Display Sequence: **?**

388 VA-COVID-19 TELEPHONE FOLLOW-UP

389 VA-SRA-CONSULT RESPONSE (D)

When you type a question mark above, you will see the list of #'s (with dialogs) that are already taken. Choose a number NOT on this list. For this example, 390 is not present so I will use 390.

Select Display Sequence: **390**

Are you adding 390 as a new Display Sequence? Yes// **YES**

Display Sequence: 390// <Enter> 390

Clinical Reminder Dialog: **VA-ONCOLOGY LUNG EARLY STAGE PATHWAYS**

reminder dialog NATIONAL

...OK? Yes// <Enter> (Yes)

Select Display Sequence: **391**

Are you adding 391 as a new Display Sequence? Yes// **YES**

Display Sequence: 391// **<Enter>** 391

Clinical Reminder Dialog: **VA-ONCOLOGY LUNG LOCALLY ADVANCED PATHWAYS**

reminder dialog NATIONAL

...OK? Yes// **<Enter>** (Yes)

Select Display Sequence: **392**

Are you adding 392 as a new Display Sequence? Yes// **YES**

Display Sequence: 392// **<Enter>** 392

Clinical Reminder Dialog: **VA-ONCOLOGY LUNG FIRST LINE METS STAGE IV PATHWAYS**

reminder dialog NATIONAL

...OK? Yes// **<Enter>** (Yes)

Select Display Sequence: **393**

Are you adding 393 as a new Display Sequence? Yes// **YES**

Display Sequence: 393// **<Enter>** 393

Clinical Reminder Dialog: **VA-ONCOLOGY LUNG RELAPSE PATHWAYS**

reminder dialog NATIONAL

...OK? Yes// **<Enter>** (Yes)

Select Display Sequence: **394**

Are you adding 394 as a new Display Sequence? Yes// **YES**

Display Sequence: 394// **<Enter>** 394

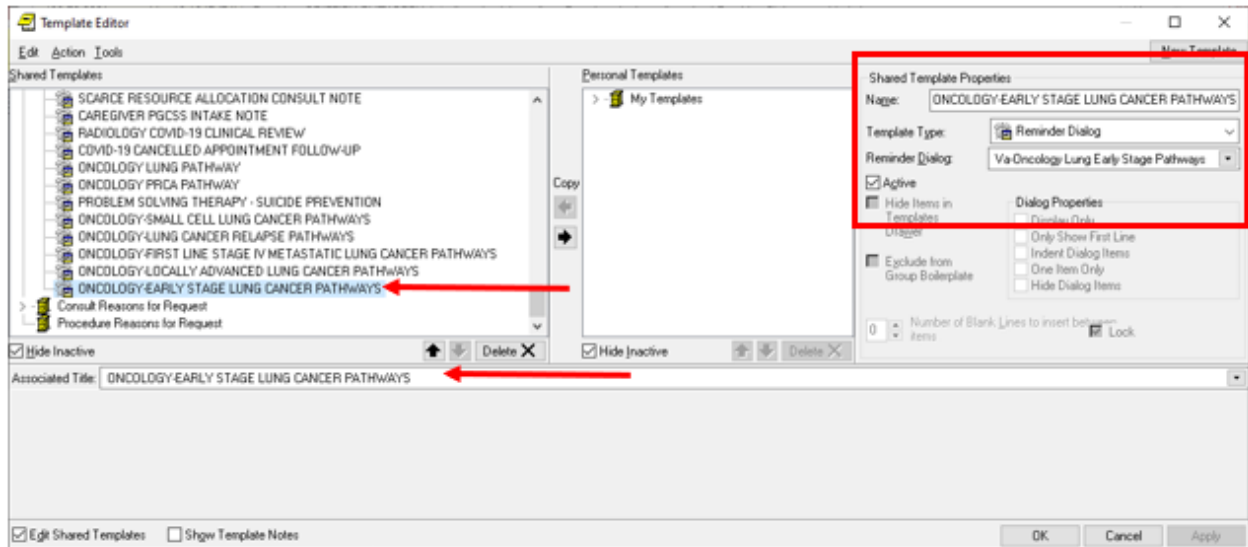
Clinical Reminder Dialog: **VA-ONCOLOGY LUNG SCLC PATHWAYS**

reminder dialog NATIONAL

...OK? Yes// **<Enter>** (Yes)

3. Associate the reminder dialogs with the note title in CPRS. In addition to connecting to the note titles, you should also add these to a shared template folder for your oncology service.

- a. In CPRS, open the Template Editor, expand Document Titles, select the appropriate folder (if applicable), then click New Template (top right-hand corner).



Type in the following information:

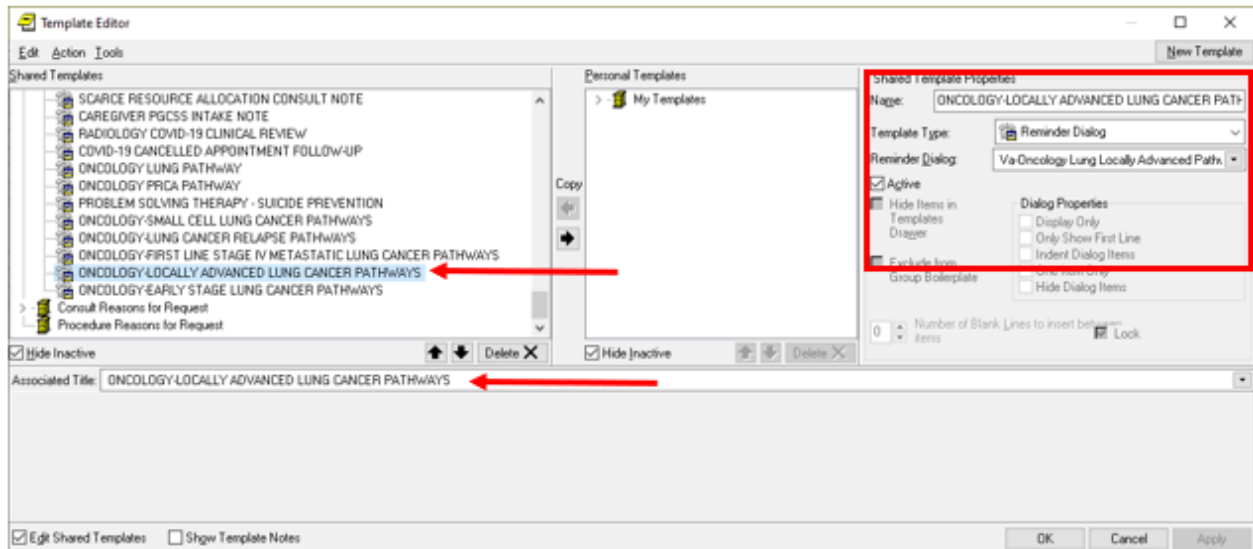
Name: **ONCOLOGY-EARLY STAGE LUNG CANCER PATHWAYS**

Template Type: **Reminder Dialog**

Reminder Dialog: **VA-ONCOLOGY LUNG EARLY STAGE PATHWAYS**

Next, type in the Associated Title name – **ONCOLOGY-EARLY STAGE LUNG CANCER PATHWAYS** – then click Apply.

- b. In CPRS, open the Template Editor, expand Document Titles, select the appropriate folder (if applicable), then click New Template (top right-hand corner).



Type in the following information:

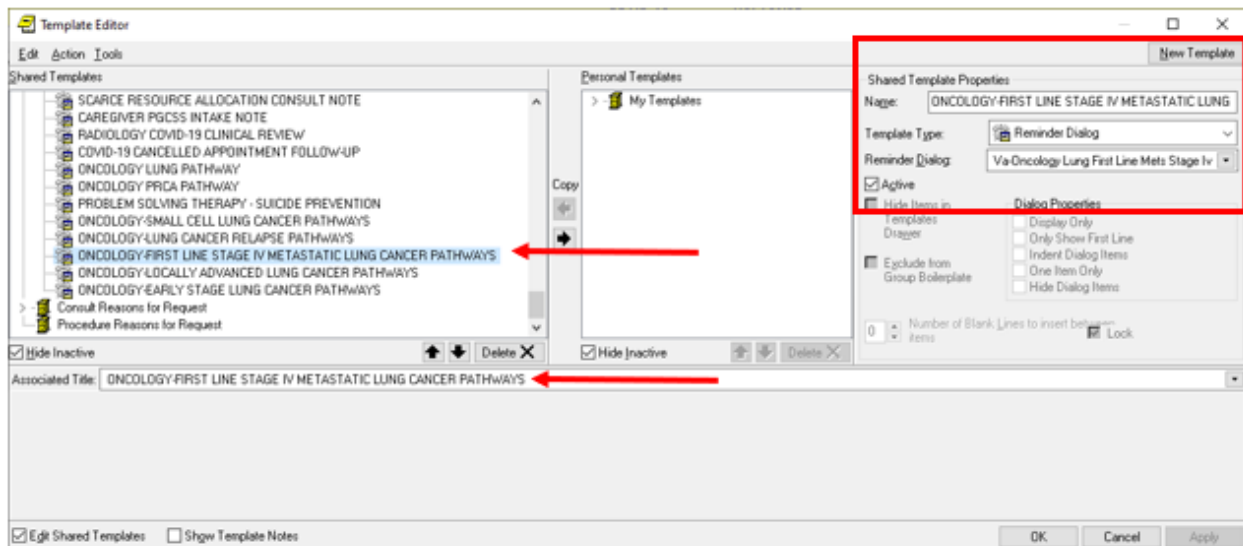
Name: ONCOLOGY-LOCALLY ADVANCED LUNG CANCER PATHWAYS

Template Type: **Reminder Dialog**

Reminder Dialog **VA-ONCOLOGY LUNG LOCALLY ADVANCED PATHWAYS**

Next, type in the Associated Title name – **ONCOLOGY-LOCALLY ADVANCED LUNG CANCER PATHWAYS** – then click Apply.

- c. In CPRS, open the Template Editor, expand Document Titles, select the appropriate folder (if applicable), then click New Template (top right-hand corner).



Type in the following information:

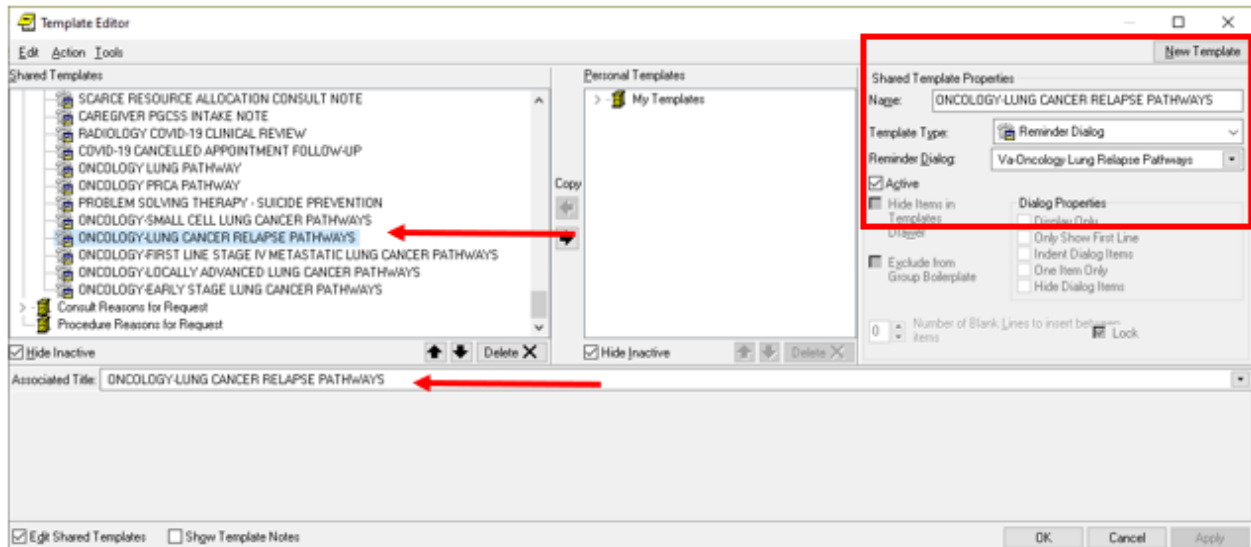
Name: **ONCOLOGY-FIRST LINE STAGE IV METASTATIC LUNG CANCER PATHWAYS**

Template Type: **Reminder Dialog**

Reminder Dialog: **VA-ONCOLOGY LUNG FIRST LINE METS STAGE IV PATHWAYS**

Next, type in the Associated Title name – **ONCOLOGY-FIRST LINE STAGE IV METASTATIC LUNG CANCER PATHWAYS** – then click Apply.

- d. In CPRS, open the Template Editor, expand Document Titles, select the appropriate folder (if applicable), then click New Template (top right-hand corner).



Type in the following information:

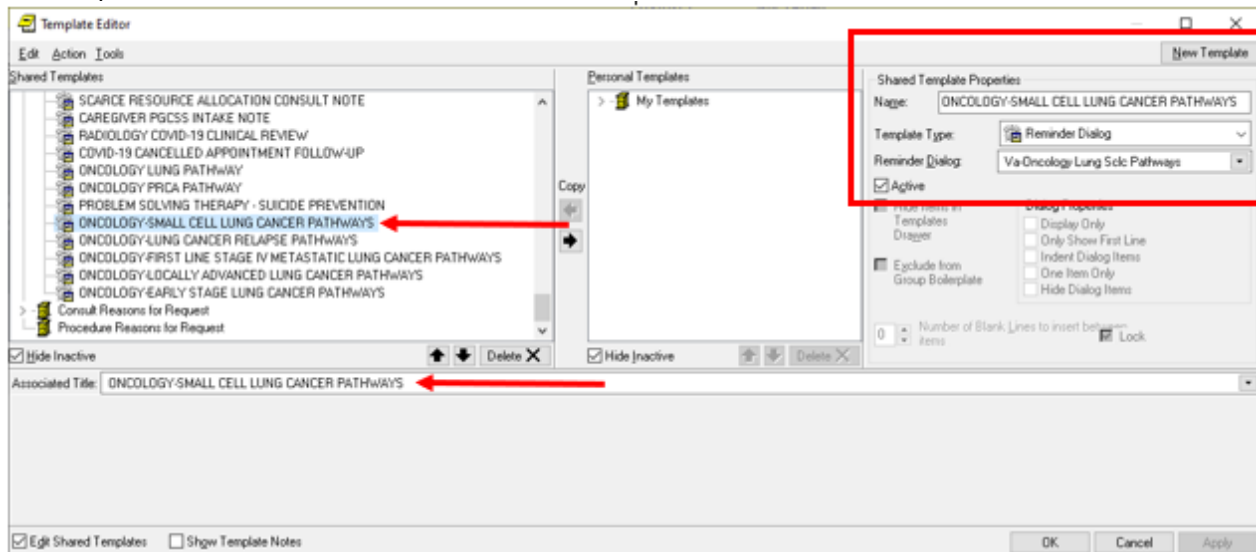
Name: **ONCOLOGY-LUNG CANCER RELAPSE PATHWAYS**

Template Type: **Reminder Dialog**

Reminder Dialog: **VA-ONCOLOGY LUNG RELAPSE PATHWAYS**

Next, type in the Associated Title name – **ONCOLOGY-LUNG CANCER RELAPSE PATHWAYS**– then click Apply.

- e. In CPRS, open the Template Editor, expand Document Titles, select the appropriate folder (if applicable), then click New Template (top right-hand corner).



Type in the following information:

Name: **ONCOLOGY-SMALL CELL LUNG CANCER PATHWAYS**

Template Type: **Reminder Dialog**

Reminder Dialog: **VA-ONCOLOGY LUNG SCLC PATHWAYS**

Next, type in the Associated Title name – **ONCOLOGY-SMALL CELL LUNG CANCER PATHWAYS** – then click Apply.

4. **Disable element** –If your site **does not** have the precision oncology IFC available, you can disable this element: VAL-ONC LUNG IVB POS 1ST OTHER. There are 111 sites that have this consult. If the site would like the consult, contact REDACTED.
5. **Enable specific elements – Review with your oncologist to see if they would like only lung pathway health factors to display or all pathway health factors to display in the template.**
 - A. Released enabled local elements: These elements have an object that is only for lung pathway health factors. If your Oncologists only want lung pathway health factors to show in the pathway templates, you do not have to do anything else.
VA-ONC LUNG PATHWAYS PRIOR DATA OBJECT
VA-ONC LUNG PATHWAYS PREVIOUS DATA CLICK TO INCLUDE
|VA-ONCOLOGY PATHWAYS LUNG| is being released with the lung pathway health factors.

- B. Released disabled local elements: These elements have an object that is for all pathway health factors. If your Oncologists want all pathway health factors to show in the pathway templates, you need to enable these elements.

VA-ONC PATHWAYS PRIOR DATA OBJECT (Disabled)

VA-ONC PATHWAYS PREVIOUS DATA CLICK TO INCLUDE (Disabled)

And disable these elements:

VA-ONC LUNG PATHWAYS PRIOR DATA OBJECT

VA-ONC LUNG PATHWAYS PREVIOUS DATA CLICK TO INCLUDE

[VA-ONCOLOGY PATHWAYS] is being released with the lung pathway health factors and the prostate molecular testing health factors mapped.

6. Add orders to the reminder dialog. (OPTIONAL)

Within the templates, there are multiple places where you can add a consult orders or a menu to order consults. Review with your local oncology service to see if they would like these orders added to the dialogs.

Using the Vista Menu, Reminder Dialog Manager, DI- Reminder Dialog, change view to element view edit the following reminder dialog elements, adding your quick order or menu containing the items indicated as an additional finding to these elements:

Element	Finding
Template: VA-ONCOLOGY LUNG EARLY STAGE	
Pathway: NSCLC Clinical Stage IA and IB	
VA-ONC LUNG IA/IB SURG NO REFER RAD ONC	Map Radiation Oncology consult
VA-ONC LUNG IA/IB PATH IA POS NON RESECT REFER RAD ONC	Map Radiation Oncology consult
VA-ONC LUNG IA/IB PATH IB POS NO RESECT REFER RAD ONC	Map Radiation Oncology consult
Pathway: NCLC Clinical Stage IIA, IIB and Resectable IIIA Excluding Single Level N2 and Pancoast Tumors	
VA-ONC LUNG IIA/IIB NOT SURG CAND REFER RAD AND ONC	Map Radiation Oncology consult/Oncology consult-order menu
VA-ONC LUNG IIA/IIB PATH R1/R2 NSQ NON RESECT CIS+PEME	Map Radiation Oncology consult
VA-ONC LUNG IIA/IIB PATH R1/R2 SQU NON RESECT CIS+DOC	Map Radiation Oncology consult
VA-ONC LUNG IIA/IIB PATH R1/R2 NSQ POST CIS+PEME	Map Radiation Oncology consult
VA-ONC LUNG IIA/IIB PATH R1/R2 SQU POST CIS+DOC	Map Radiation Oncology consult
Pathway: NSCLC Clinical Stage IIIA Resectable Single Level N2, T2a-T2b, and T3	
VA-ONC LUNG IIIA R1/R2 RE-RESECT NOT CAND REFER RAD ONC	Map Radiation Oncology consult

Template: VA-ONCOLOGY LUNG LOCALLY ADVANCED PATHWAYS	
Pathway: Pancoast Tumors T4N1 and T4N0	
VA-ONC LUNG PANCOAST SURG CAND CIS+ETOP SURGERY	Map Radiation Oncology consult/Surgery consult-order menu
VA-ONC LUNG PANCOAST SURG NO CIS+ETOP CARBO+PAC	Map Radiation Oncology consult/Surgery consult-order menu
VA-ONC LUNG PANCOAST NO SURG CIS+ETOP DURVALUMAB	Map Radiation Oncology consult
VA-ONC LUNG PANCOAST NO SURG NO CIS+ETOP CARBO+PAC	Map Radiation Oncology consult
Pathway: NSCLC Stage III Unresectable Multiple Level N2, Bulky N2, Any N3, Any T4 due to Tumor Invasion into Adjacent Structure First Line	
VA-ONC LUNG III CON RAD YES 1ST CARBO+PAC W/RAD	Map Radiation Oncology consult
VA-ONC LUNG III CON RAD NO NSQ CARBO+PEME	Map Radiation Oncology consult
VA-ONC LUNG III CON RAD NO SQU CARBO+PAC	Map Radiation Oncology consult
Template: VA-ONCLOGY LUNG FIRST LINE METS STAGE IV PATHWAYS	
Pathway: NSCLC Stage IVA M1b Single Extrathoracic Site (Oligometastatic Disease) or M1a due to a Contralateral Nodule at Presentation	
VA-ONC LUNG REFER TO PALLIATIVE CARE	Map Palliative Care consult
VA-ONC LUNG M1B AMEN REFER	Map Radiation Oncology consult/Rad Onc/Surgery consult-order menu
Pathway: NSCLC Stage IVA Due to Pericardial/Pleural Effusion and IVB Mutation Positive	
VAL-ONC LUNG IVB POS 1ST OTHER	Map Precision Oncology consult
Pathway: Squamous Stage IVB First Line	
VA-ONC LUNG SQUIVB SYMPTOMATIC	Map Radiation Oncology consult
VA-ONC LUNG SQUIVB NO CHEMO/IMMUNO HOSPICE	Map Hospice consult
Template: VA-ONCOLOGY LUNG RELAPSE PATHWAYS	
Pathway: Non-Squamous Relapse	

VA-ONC LUNG NSR 3RD LINE YES DOCETAXEL REFER HOSPICE	Map Hospice consult
Pathway: Squamous Relapse	
VA-ONC LUNG SQR 2ND LINE CHEMO/IMMUNO AMEN RAD REFER RAD ONC	Map Radiation Oncology consult
VA-ONC LUNG SQR 2ND LINE IMMUNO AMEN REFER RAD ONC	Map Radiation Oncology consult
VA-ONC LUNG SQR 3RD LINE PROG AMEN LOCAL THERAPY	Map Radiation Oncology consult
VA-ONC LUNG SQR 3RD LINE PROG NOT AMEN PALL CARE	Map Palliative Care consult
Template: VA-ONCOLOGY LUNG SCLC PATHWAYS	
Pathway: SCLC Incidental Discovery Resected	
VA-ONC LUNG SCLC INC INCOMP RESECT CIS+ETO+RAD	Map Radiation Oncology consult
Pathway: SCLC Limited Stage First Line	
VA-ONC LUNG SCLC LIMIT INITIAL CIS+ETO W/RAD	Map Radiation Oncology consult
VA-ONC LUNG SCLC LIMIT SUB PS3-4 NO RAD ONC	Map Radiation Oncology consult
VA-ONC LUNG SCLC LIMIT SUB PS3-4 SURVEILLANCE	Map MRI quick order/Radiology order menu
Pathway: SCLC Extensive Stage First Line	
VA-ONC LUNG SCLC EXT SYMPTOMATIC	Map Radiation Oncology consult
VA-ONC LUNG SCLC EXT IMMUNO ONLY REFER HOSPICE	Map Hospice consult
VA-ONC LUNG SCLC RELAPSE <6M PS 3-4 REFER HOSPICE	Map Hospice consult
Pathway: SCLC Relapse	
VA-ONC LUNG SCLC RELAPSE SYMPTOMATIC	Map Radiation Oncology consult
VA-ONC LUNG SCLC RELAPSE <6M PS 3-4 REFER HOSPICE	Map Hospice consult
Template: VA-ONCOLOGY LUNG PATHWAY	These may have been previously mapped
Pathway: Metastatic NSCLC Molecular Testing	
VA-EL ONC LUNG ON PDL1	Map PD-L1 order
VA-EL ONC LUNG PTHWY NGS ON	Map Tumor Genomic testing order
VA-EL ONC LUNG PTHWY LIQUID BIOPSY	Map order for liquid biopsy