



Update _2_0_407

Clinical Reminders

VA-ONC CLINICAL PATHWAYS – ESOPHAGEAL CANCER

Install Guide

January 2024

Product Development
Office of Information Technology
Department of Veterans Affairs

Table of Contents

INTRODUCTION 1
PRE-INSTALL 9
INSTALL EXAMPLE 9
POST INSTALLATION 14

Introduction

The esophageal cancer clinical pathways are to be utilized by all VAs with an Oncology program. Oncology Clinical Pathways (CPs) are decision-support tools that translate published evidence into standardized treatment process maps to help guide cancer treatment decisions. Oncology CPs are different from treatment guidelines, as CPs recommend a standard treatment based on efficacy, toxicity, and cost. VA Oncology CPs are developed by an interdisciplinary subject matter expert (SME) group and approved by national program offices. This update contains three esophageal cancer templates with thirteen total clinical pathways.

VHA Directive 1415 requires that all sites use the National Oncology templates. If your site does not provide oncology services, the site must request a waiver to exempt it from the requirement to use the National Oncology templates. The waiver can be requested by emailing REDACTED

UPDATE_2_0_407 contains 1 Reminder Exchange entry named **UPDATE_2_0_407 VA-ONC CLINICAL PATHWAYS – ESOPHAGEAL CANCER**

This contains 3 reminder dialogs.

VA-ONCOLOGY ESOPH CANCER IVB ADC PATHWAYS
VA-ONCOLOGY ESOPH CANCER ADC+SCC PATHWAYS
VA-ONCOLOGY ESOPH CANCER IVB SCC PATHWAYS

The exchange file contains the following components:

REMINDER GENERAL FINDINGS

VIEW PROGRESS NOTE TEXT

TIU TEMPLATE FIELD

VA-ONC PRESUMPTIVE CONDITIONS
VA-ONC OFF REASON TXT
VA-ONC TREATMENT REASON
VA-ONC CLINICAL TRIAL
VA-ONC PATHWAYS SHAREPOINT
VA-ONC NEITHER ON/OFF
VA-ONC NPOP SHAREPOINT

HEALTH FACTORS

VA-REMINDER UPDATES [C]
VA-UPDATE_2_0_407
VA-ONC ESOPH CA MOLECULAR TESTING [C]
VA-ONC ESOPH CA PD-L1 TEST NOT ORDERED OFF PATH RSN
VA-ONC ESOPH CA PD-L1 TEST ORDER FUTURE DATE

VA-ONC ESOPH CA PD-L1 TEST ORDERED
VA-ONC ESOPH CA HER2 TEST NOT ORDERED OFF PATH RSN
VA-ONC ESOPH CA HER2 TEST ORDER FUTURE DATE
VA-ONC ESOPH CA HER2 TEST ORDERED
VA-ONC ESOPH CA MSI/MMR TEST NOT ORDERED OFF PATH RSN
VA-ONC ESOPH CA MSI/MMR TEST ORDER FUTURE DATE
VA-ONC ESOPH CA MSI/MMR TEST ORDERED
VA-ONC ESOPH STAGE C5CC/LOCAL CLINICAL PATHWAY [C]
VA-ONC ESOPH STAGE C5CC/UL CHEMO NO OFF PATH RSN
VA-ONC ESOPH STAGE C5CC/UL CHEMO NO OFF PATH TX
VA-ONC ESOPH STAGE C5CC/UL CHEMO NO SURV
VA-ONC ESOPH STAGE C5CC/UL CHEMO NO CLIN TRIAL
VA-ONC ESOPH STAGE C5CC/UL CHEMO OFF PATH RSN
VA-ONC ESOPH STAGE C5CC/UL CHEMO OFF PATH TX
VA-ONC ESOPH STAGE C5CC/UL CHEMO ADJ CARB+PAC
VA-ONC ESOPH STAGE C5CC/UL CHEMO CLIN TRIAL
VA-ONC ESOPH STAGE C5CC/UL OFF PATH REASON
VA-ONC ESOPH STAGE C5CC/UL OFF PATH TX
VA-ONC ESOPH STAGE C5CC/UL CARBO+PAC W/RAD
VA-ONC ESOPH STAGE C5CC/UL CLIN TRIAL
VA-ONC ESOPH STAGE IVB SCC SL CLINICAL PATHWAY [C]
VA-ONC ESOPH STAGE IVB SCC SL HOSPICE
VA-ONC ESOPH STAGE IVB SCC SL TX NO HOSPICE
VA-ONC ESOPH STAGE IVB SCC SL TX CAND NO OFF PATH RSN
VA-ONC ESOPH STAGE IVB SCC SL TX CAND NO OFF PATH TX
VA-ONC ESOPH STAGE IVB SCC SL TX CAND NO CLIN TRIAL
VA-ONC ESOPH STAGE IVB SCC SL IMM NP TAX NO OFF PATH RSN
VA-ONC ESOPH STAGE IVB SCC SL IMM NP TAX NO OFF PATH TX
VA-ONC ESOPH STAGE IVB SCC SL IMM NP TAX NO DOCE
VA-ONC ESOPH STAGE IVB SCC SL IMM NP TAX NO CLIN TRIAL
VA-ONC ESOPH STAGE IVB SCC SL IMM NP TAX OFF PATH RSN
VA-ONC ESOPH STAGE IVB SCC SL IMM NP TAX OFF PATH TX
VA-ONC ESOPH STAGE IVB SCC SL IMM NP TAX IRINO
VA-ONC ESOPH STAGE IVB SCC SL IMM NP TAX CLIN TRIAL
VA-ONC ESOPH STAGE IVB SCC SL IMM PDL<10 OFF PATH RSN
VA-ONC ESOPH STAGE IVB SCC SL IMM PDL<10 OFF PATH TX
VA-ONC ESOPH STAGE IVB SCC SL IMM PDL<10 NIVO
VA-ONC ESOPH STAGE IVB SCC SL IMM PDL<10 CLIN TRIAL
VA-ONC ESOPH STAGE IVB SCC SL IMM PDL>10 OFF PATH RSN
VA-ONC ESOPH STAGE IVB SCC SL IMM PDL>10 OFF PATH TX
VA-ONC ESOPH STAGE IVB SCC SL IMM PDL>10 PEMBRO
VA-ONC ESOPH STAGE IVB SCC SL IMM PDL>10 CLIN TRIAL
VA-ONC ESOPH STAGE IVB SCC SL NP TAX NO OFF PATH RSN
VA-ONC ESOPH STAGE IVB SCC SL NP TAX NO OFF PATH TX

VA-ONC ESOPH STAGE IVB SCC SL NP TAX NO DOCE
VA-ONC ESOPH STAGE IVB SCC SL NP TAX NO CLIN TRIAL
VA-ONC ESOPH STAGE IVB SCC SL NP TAX OFF PATH RSN
VA-ONC ESOPH STAGE IVB SCC SL NP TAX OFF PATH TX
VA-ONC ESOPH STAGE IVB SCC SL NP TAX IRINO
VA-ONC ESOPH STAGE IVB SCC SL NP TAX CLIN TRIAL
VA-ONC ESOPH STAGE IVB SCC FL CLINICAL PATHWAY [C]
VA-ONC ESOPH STAGE IVB SCC FL IMMUN+CHEMO NIV+CAPOX
VA-ONC ESOPH STAGE IVB SCC FL HOSPICE
VA-ONC ESOPH STAGE IVB SCC FL IMMUN NO CHEMO NO OFF PATH RSN
VA-ONC ESOPH STAGE IVB SCC FL IMMUN NO CHEMO NO OFF PATH TX
VA-ONC ESOPH STAGE IVB SCC FL RAD ONC
VA-ONC ESOPH STAGE IVB SCC FL IMMUN NO CHEMO NO CLIN TRIAL
VA-ONC ESOPH STAGE IVB SCC FL IMMUN NO CHEMO OFF PATH RSN
VA-ONC ESOPH STAGE IVB SCC FL IMMUN NO CHEMO OFF PATH TX
VA-ONC ESOPH STAGE IVB SCC FL IMMUN NO CHEMO MFOLFOX6
VA-ONC ESOPH STAGE IVB SCC FL IMMUN NO CHEMO CAPOX
VA-ONC ESOPH STAGE IVB SCC FL IMMUN NO CHEMO CLIN TRIAL
VA-ONC ESOPH STAGE IVB SCC FL IMMUN+CHEMO NO OFF PATH RSN
VA-ONC ESOPH STAGE IVB SCC FL IMMUN+CHEMO NO OFF PATH TX
VA-ONC ESOPH STAGE IVB SCC FL IMMUN+CHEMO NO NIV+IPI
VA-ONC ESOPH STAGE IVB SCC FL IMMUN+CHEMO NO CLIN TRIAL
VA-ONC ESOPH STAGE IVB SCC FL IMMUN+CHEMO OFF PATH RSN
VA-ONC ESOPH STAGE IVB SCC FL IMMUN+CHEMO OFF PATH TX
VA-ONC ESOPH STAGE IVB SCC FL IMMUN+CHEMO NIV+MFOLFOX6
VA-ONC ESOPH STAGE IVB SCC FL IMMUN+CHEMO CLIN TRIAL
VA-ONC ESOPH STAGE IVB ADC MSI HIGH CLINICAL PATHWAY [C]
VA-ONC ESOPH STAGE IVB ADC MSI HOSPICE
VA-ONC ESOPH STAGE IVB ADC MSI HIGH CHEMO NO ICI NO OFF PATH RSN
VA-ONC ESOPH STAGE IVB ADC MSI HIGH CHEMO NO ICI NO OFF PATH TX
VA-ONC ESOPH STAGE IVB ADC MSI HIGH CHEMO NO ICI NO CLIN TRIAL
VA-ONC ESOPH STAGE IVB ADC MSI HIGH CHEMO NO+ICI OFF PATH RSN
VA-ONC ESOPH STAGE IVB ADC MSI HIGH CHEMO NO+ICI OFF PATH TX
VA-ONC ESOPH STAGE IVB ADC MSI HIGH CHEMO NO+ICI PEMBRO
VA-ONC ESOPH STAGE IVB ADC MSI HIGH CHEMO NO+ICI CLIN TRIAL
VA-ONC ESOPH STAGE IVB ADC MSI HIGH CHEMO ICI NO OFF PATH RSN
VA-ONC ESOPH STAGE IVB ADC MSI HIGH CHEMO ICI NO OFF PATH TX
VA-ONC ESOPH STAGE IVB ADC MSI HIGH CHEMO ICI NO MFOLFOX6
VA-ONC ESOPH STAGE IVB ADC MSI HIGH CHEMO ICI NO CAPOX
VA-ONC ESOPH STAGE IVB ADC MSI HIGH CHEMO ICI NO CLIN TRIAL
VA-ONC ESOPH STAGE IVB ADC MSI HIGH CHEMO+ICI OFF PATH RSN
VA-ONC ESOPH STAGE IVB ADC MSI HIGH CHEMO+ICI OFF PATH TX
VA-ONC ESOPH STAGE IVB ADC MSI HIGH CHEMO+ICI NIV+MFOLFOX6
VA-ONC ESOPH STAGE IVB ADC MSI HIGH CHEMO+ICI NIV+CAPOX

VA-ONC ESOPH STAGE IVB ADC MSI HIGH CHEMO+ICI CLIN TRIAL
VA-ONC ESOPH STAGE IVB ADC NEG SL CLINICAL PATHWAY [C]
VA-ONC ESOPH STAGE IVB ADC NEG SL NO RAM DOCE
VA-ONC ESOPH STAGE IVB ADC NEG SL NO RAM PAC
VA-ONC ESOPH STAGE IVB ADC NEG SL NO RAM TAXANE
VA-ONC ESOPH STAGE IVB ADC NEG SL NO TX OFF PATH RSN
VA-ONC ESOPH STAGE IVB ADC NEG SL NO TX OFF PATH TX
VA-ONC ESOPH STAGE IVB ADC NEG SL HOSPICE
VA-ONC ESOPH STAGE IVB ADC NEG SL NO TX CLIN TRIAL
VA-ONC ESOPH STAGE IVB ADC NEG SL NO RAM OFF PATH RSN
VA-ONC ESOPH STAGE IVB ADC NEG SL NO RAM OFF PATH TX
VA-ONC ESOPH STAGE IVB ADC NEG SL NO RAM IRIN
VA-ONC ESOPH STAGE IVB ADC NEG SL NO RAM CLIN TRIAL
VA-ONC ESOPH STAGE IVB ADC NEG SL RAM OFF PATH RSN
VA-ONC ESOPH STAGE IVB ADC NEG SL RAM OFF PATH TX
VA-ONC ESOPH STAGE IVB ADC NEG SL PAC+RAM
VA-ONC ESOPH STAGE IVB ADC NEG SL RAM CLIN TRIAL
VA-ONC ESOPH STAGE IVB ADC NEG FL CLINICAL PATHWAY [C]
VA-ONC ESOPH STAGE IVB ADC NEG FL PDL CAPOX
VA-ONC ESOPH STAGE IVB ADC NEG FL PDL NIV+CAPOX
VA-ONC ESOPH STAGE IVB ADC NEG FL NO CYTO OFF PATH RSN
VA-ONC ESOPH STAGE IVB ADC NEG FL NO CYTO OFF PATH TX
VA-ONC ESOPH STAGE IVB ADC NEG FL HOSPICE
VA-ONC ESOPH STAGE IVB ADC NEG FL NO CYTO CLIN TRIAL
VA-ONC ESOPH STAGE IVB ADC NEG FL NO ICI OFF PATH RSN
VA-ONC ESOPH STAGE IVB ADC NEG FL NO ICI OFF PATH TX
VA-ONC ESOPH STAGE IVB ADC NEG FL NO ICI CAPOX
VA-ONC ESOPH STAGE IVB ADC NEG FL NO ICI MFOLFOX6
VA-ONC ESOPH STAGE IVB ADC NEG FL NO ICI CLIN TRIAL
VA-ONC ESOPH STAGE IVB ADC NEG FL PDL < OFF PATH RSN
VA-ONC ESOPH STAGE IVB ADC NEG FL PDL < OFF PATH TX
VA-ONC ESOPH STAGE IVB ADC NEG FL PDL MFOLFOX6
VA-ONC ESOPH STAGE IVB ADC NEG FL PDL < CLIN TRIAL
VA-ONC ESOPH STAGE IVB ADC NEG FL PDL > OFF PATH RSN
VA-ONC ESOPH STAGE IVB ADC NEG FL PDL > OFF PATH TX
VA-ONC ESOPH STAGE IVB ADC NEG FL PDL NIV+MFOLFOX6
VA-ONC ESOPH STAGE IVB ADC NEG FL PDL > CLIN TRIAL
VA-ONC ESOPH STAGE IVB ADC POS SL CLINICAL PATHWAY [C]
VA-ONC ESOPH STAGE IVB ADC POS SL NO RAM DOCE
VA-ONC ESOPH STAGE IVB ADC POS SL NO RAM PAC
VA-ONC ESOPH STAGE IVB ADC POS SL NO RAM TAX
VA-ONC ESOPH STAGE IVB ADC POS SL FAM-TRAS
VA-ONC ESOPH STAGE IVB ADC POS SL THERAPY OFF PATH RSN
VA-ONC ESOPH STAGE IVB ADC POS SL THERAPY OFF PATH TX

VA-ONC ESOPH STAGE IVB ADC POS SL THERAPY CLIN TRIAL
VA-ONC ESOPH STAGE IVB ADC POS SL NO THERAPY OFF PATH RSN
VA-ONC ESOPH STAGE IVB ADC POS SL NO THERAPY OFF PATH TX
VA-ONC ESOPH STAGE IVB ADC POS SL HOSPICE
VA-ONC ESOPH STAGE IVB ADC POS SL NO THERAPY CLIN TRIAL
VA-ONC ESOPH STAGE IVB ADC POS SL NO RAM OFF PATH RSN
VA-ONC ESOPH STAGE IVB ADC POS SL NO RAM OFF PATH TX
VA-ONC ESOPH STAGE IVB ADC POS SL NO RAM IRIN
VA-ONC ESOPH STAGE IVB ADC POS SL NO RAM CLIN TRIAL
VA-ONC ESOPH STAGE IVB ADC POS SL RAM OFF PATH RSN
VA-ONC ESOPH STAGE IVB ADC POS SL RAM OFF PATH TX
VA-ONC ESOPH STAGE IVB ADC POS SL RAM PAC+RAM
VA-ONC ESOPH STAGE IVB ADC POS SL RAM CLIN TRIAL
VA-ONC ESOPH STAGE IVB ADC POS FL CLINICAL PATHWAY [C]
VA-ONC ESOPH STAGE IVB ADC POS FL PDL NIV+CAP
VA-ONC ESOPH STAGE IVB ADC POS FL PDL CAPOX
VA-ONC ESOPH STAGE IVB ADC POS FL NO CYTO CHEM OFF PATH RSN
VA-ONC ESOPH STAGE IVB ADC POS FL NO CYTO CHEM OFF PATH TX
VA-ONC ESOPH STAGE IVB ADC POS FL NO CYTO CHEM REFER HOSPICE
VA-ONC ESOPH STAGE IVB ADC POS FL NO CYTO CHEM REFER RAD ONC
VA-ONC ESOPH STAGE IVB ADC POS FL NO CYTO CHEM CLIN TRIAL
VA-ONC ESOPH STAGE IVB ADC POS FL PDL < OFF PATH RSN
VA-ONC ESOPH STAGE IVB ADC POS FL PDL < OFF PATH TX
VA-ONC ESOPH STAGE IVB ADC POS FL PDL MFOLFOX6
VA-ONC ESOPH STAGE IVB ADC POS FL PDL < CLIN TRIAL
VA-ONC ESOPH STAGE IVB ADC POS FL PDL > OFF PATH RSN
VA-ONC ESOPH STAGE IVB ADC POS FL PDL > OFF PATH TX
VA-ONC ESOPH STAGE IVB ADC POS FL PDL NIV+FOX6
VA-ONC ESOPH STAGE IVB ADC POS FL PDL > CLIN TRIAL
VA-ONC ESOPH STAGE IVB ADC POS FL PDL1< OFF PATH RSN
VA-ONC ESOPH STAGE IVB ADC POS FL PDL1< OFF PATH TX
VA-ONC ESOPH STAGE IVB ADC POS FL PDL1< TRAS+FOX6
VA-ONC ESOPH STAGE IVB ADC POS FL PDL1< TRAS+CAPOX
VA-ONC ESOPH STAGE IVB ADC POS FL PDL1< CLIN TRIAL
VA-ONC ESOPH STAGE IVB ADC POS FL PDL1> OFF PATH RSN
VA-ONC ESOPH STAGE IVB ADC POS FL PDL1> OFF PATH TX
VA-ONC ESOPH STAGE IVB ADC POS FL PDL1> TRAS+FOX6
VA-ONC ESOPH STAGE IVB ADC POS FL PDL1> TRAS+CAPOX
VA-ONC ESOPH STAGE IVB ADC POS FL PDL1> CLIN TRIAL
VA-ONC ESOPH STAGE IB-IVA CLINICAL PATHWAY [C]
VA-ONC ESOPH STAGE IB-IVA SURG INCOMP NO ICI OFF PATH RSN
VA-ONC ESOPH STAGE IB-IVA SURG INCOMP NO ICI OFF PATH TX
VA-ONC ESOPH STAGE IB-IVA SURG INCOMP NO ICI SURV
VA-ONC ESOPH STAGE IB-IVA SURG INCOMP NO ICI CLIN TRIAL

VA-ONC ESOPH STAGE IB-IVA NO SURG OFF PATH RSN
VA-ONC ESOPH STAGE IB-IVA NO SURG OFF PATH TX
VA-ONC ESOPH STAGE IB-IVA NO SURG CARB+PAC W/SURV
VA-ONC ESOPH STAGE IB-IVA NO SURG CLIN TRIAL
VA-ONC ESOPH STAGE IB-IVA SURG INCOMP ICI OFF PATH RSN
VA-ONC ESOPH STAGE IB-IVA SURG INCOMP ICI OFF PATH TX
VA-ONC ESOPH STAGE IB-IVA SURG INCOMP ICI NIVO
VA-ONC ESOPH STAGE IB-IVA SURG INCOMP ICI CLIN TRIAL
VA-ONC ESOPH STAGE IB-IVA SURG COMP OFF PATH RSN
VA-ONC ESOPH STAGE IB-IVA SURG COMP OFF PATH TX
VA-ONC ESOPH STAGE IB-IVA SURG COMP SURV
VA-ONC ESOPH STAGE IB-IVA SURG COMP CLIN TRIAL
VA-ONC ESOPH STAGE IB-IVA SURG OFF PATH RSN
VA-ONC ESOPH STAGE IB-IVA SURG OFF PATH TX
VA-ONC ESOPH STAGE IB-IVA SURG CARB+PAC W/RAD
VA-ONC ESOPH STAGE IB-IVA SURG CLIN TRIAL
VA-ONC ESOPH STAGE IIA-IVA CLINICAL PATHWAY [C]
VA-ONC ESOPH STAGE IIA-IVA SURG GAS RESECT OFF PATH RSN
VA-ONC ESOPH STAGE IIA-IVA SURG GAS RESECT OFF PATH TX
VA-ONC ESOPH STAGE IIA-IVA SURG GAS RESECT SURG/CHEMO
VA-ONC ESOPH STAGE IIA-IVA SURG GAS RESECT CLIN TRIAL
VA-ONC ESOPH STAGE IIA-IVA SURG ESO RESECT OFF PATH RSN
VA-ONC ESOPH STAGE IIA-IVA SURG ESO RESECT OFF PATH TX
VA-ONC ESOPH STAGE IIA-IVA SURG ESO RESECT TO SURGERY
VA-ONC ESOPH STAGE IIA-IVA SURG ESO RESECT CLIN TRIAL
VA-ONC ESOPH STAGE IB-IVA SURG RESECT OFF PATH RSN
VA-ONC ESOPH STAGE IB-IVA SURG RESECT OFF PATH TX
VA-ONC ESOPH STAGE IB-IVA SURG RESECT TO SURGERY
VA-ONC ESOPH STAGE IB-IVA SURG RESECT CLIN TRIAL
VA-ONC ESOPH STAGE IIA-IVA NOT SURG CAND
VA-ONC ESOPH STAGE IIA-IVA SURG CAND GASTRIC
VA-ONC ESOPH STAGE IIA-IVA SURG CAND ESOPH
VA-ONC ESOPH STAGE IIA-IVA NO FLOT4 OFF PATH RSN
VA-ONC ESOPH STAGE IIA-IVA NO FLOT4 OFF PATH TX
VA-ONC ESOPH STAGE IIA-IVA NO FLOT4 PREOP MFOLFOX6
VA-ONC ESOPH STAGE IIA-IVA NO FLOT4 CLIN TRIAL
VA-ONC ESOPH STAGE IIA-IVA FLOT4 OFF PATH REASON
VA-ONC ESOPH STAGE IIA-IVA FLOT4 OFF PATH TX
VA-ONC ESOPH STAGE IIA-IVA FLOT4 PREOP FLOT4
VA-ONC ESOPH STAGE IIA-IVA FLOT4 CLIN TRIAL
VA-ONC ESOPH STAGE IIA-IVA SURG S/P ESO INCOMP NO ICI CLIN TRIAL
VA-ONC ESOPH STAGE IIA-IVA NO SURG OFF PATH RSN
VA-ONC ESOPH STAGE IIA-IVA NO SURG OFF PATH TX
VA-ONC ESOPH STAGE IIA-IVA NO SURG CARB/PAC W/RAD

VA-ONC ESOPH STAGE IIA-IVA NO SURG CLIN TRIAL
VA-ONC ESOPH STAGE IIA-IVA SURG GAS NO FLOT4 CAND
VA-ONC ESOPH STAGE IIA-IVA SURG GAS FLOT4 CAND
VA-ONC ESOPH STAGE IIA-IVA SURG GAS OFF PATH RSN
VA-ONC ESOPH STAGE IIA-IVA SURG GAS OFF PATH TX
VA-ONC ESOPH STAGE IIA-IVA SURG GAS PERIOP CHEMO
VA-ONC ESOPH STAGE IIA-IVA SURG GAS CLIN TRIAL
VA-ONC ESOPH STAGE IIA-IVA SURG S/P ESO INCOMP NO ICI OFF PTH RN
VA-ONC ESOPH STAGE IIA-IVA SURG S/P ESO INCOMP NO ICI OFF PTH TX
VA-ONC ESOPH STAGE IIA-IVA SURG S/P ESO INCOMP NO ICI SURV
VA-ONC ESOPH STAGE IIA-IVA SURG S/P ESO INCOMP ICI OFF PATH RSN
VA-ONC ESOPH STAGE IIA-IVA SURG S/P ESO INCOMP ICI OFF PATH TX
VA-ONC ESOPH STAGE IIA-IVA SURG S/P ESO INCOMP ICI NIVO
VA-ONC ESOPH STAGE IIA-IVA SURG S/P ESO INCOMP ICI CLIN TRIAL
VA-ONC ESOPH STAGE IIA-IVA SURG S/P ESO COMP OFF PATH RSN
VA-ONC ESOPH STAGE IIA-IVA SURG S/P ESO COMP OFF PATH TX
VA-ONC ESOPH STAGE IIA-IVA SURG S/P ESO COMP SURV
VA-ONC ESOPH STAGE IIA-IVA SURG S/P ESO COMP CLIN TRIAL
VA-ONC ESOPH STAGE IIA-IVA SURG ESO OFF PATH RSN
VA-ONC ESOPH STAGE IIA-IVA SURG ESO OFF PATH TX
VA-ONC ESOPH STAGE IIA-IVA SURG ESO CARB/PAC
VA-ONC ESOPH STAGE IIA-IVA SURG ESO CLIN TRIAL
VA-ONC ESOPH STAGE I T1A+B CLINICAL PATHWAY [C]
VA-ONC ESOPH STAGE I T1B SURG OFF PATH RSN
VA-ONC ESOPH STAGE I T1B SURG OFF PATH TX
VA-ONC ESOPH STAGE I T1B SURG RESECT
VA-ONC ESOPH STAGE I T1B SURG CLIN TRIAL
VA-ONC ESOPH STAGE I T1A NO RESECT OFF PATH RSN
VA-ONC ESOPH STAGE I T1A NO RESECT OFF PATH TX
VA-ONC ESOPH STAGE I T1A NO RESECT CLIN TRIAL
VA-ONC ESOPH STAGE I T1B NO SURG NO HR OFF PATH RSN
VA-ONC ESOPH STAGE I T1B NO SURG NO HR OFF PATH TX
VA-ONC ESOPH STAGE I T1B NO SURG NO HR REFER RAD ONC
VA-ONC ESOPH STAGE I T1B NO SURG NO HR CLINICAL TRIAL
VA-ONC ESOPH STAGE I T1B NO SURG HR OFF PATH RSN
VA-ONC ESOPH STAGE I T1B NO SURG HR OFF PATH TX
VA-ONC ESOPH STAGE I T1B NO SURG HR REFER MED/RAD ONC
VA-ONC ESOPH STAGE I T1B NO SURG HR CLINICAL TRIAL
VA-ONC ESOPH STAGE I T1B SURG NODE NEG OFF PATH RSN
VA-ONC ESOPH STAGE I T1B SURG NODE NEG OFF PATH TX
VA-ONC ESOPH STAGE I T1B SURG NODE NEG SURV
VA-ONC ESOPH STAGE I T1B SURG NODE NEG CLIN TRIAL
VA-ONC ESOPH STAGE I T1B SURG NODE POS OFF PATH RSN
VA-ONC ESOPH STAGE I T1B SURG NODE POS OFF PATH TX

VA-ONC ESOPH STAGE I T1B SURG NODE POS REFER MED ONC
VA-ONC ESOPH STAGE I T1B SURG NODE POS CLIN TRIAL
VA-ONC ESOPH STAGE I T1A NO RESECT MDT DISCUSS
VA-ONC ESOPH STAGE I T1A RESECT OFF PATH RSN
VA-ONC ESOPH STAGE I T1A RESECT OFF PATH TX
VA-ONC ESOPH STAGE I T1A RESECT SURVEILLANCE
VA-ONC ESOPH STAGE I T1A RESECT CLINICAL TRIAL
VA-ONCOLOGY PATHWAYS [C]
VA-ONC ESOPH STAGE C5CC/LOCAL CLINICAL PATHWAY
VA-ONC ESOPH STAGE IVB SCC SL CLINICAL PATHWAY
VA-ONC ESOPH STAGE IVB SCC FL CLINICAL PATHWAY
VA-ONC ESOPH STAGE I T1B CLINICAL PATHWAY
VA-ONC ESOPH STAGE I T1A CLINICAL PATHWAY
VA-ONC ESOPH STAGE IB-IVA CLINICAL PATHWAY
VA-ONC ESOPH STAGE IIA-IVA CLINICAL PATHWAY
VA-ONC ESOPH STAGE IVB ADC MSI HIGH CLINICAL PATHWAY
VA-ONC ESOPH STAGE IVB ADC NEG SL CLINICAL PATHWAY
VA-ONC LUNG METASTATIC NSCLC MOLECULAR TESTING [C]
VA-ONC LUNG PD-L1 ORDER FUTURE DATE
VA-ONC ESOPH STAGE IVB ADC NEG FL CLINICAL PATHWAY
VA-ONC ESOPH STAGE IVB ADC POS SL CLINICAL PATHWAY
VA-ONC ESOPH STAGE IVB ADC POS FL CLINICAL PATHWAY
VA-ONC ESOPH CA MOLECULAR TESTING

REMINDER SPONSOR

VHA ONCOLOGY

REMINDER TERM

VA-REMINDER UPDATE_2_0_407

HEALTH SUMMARY TYPE

VA-ONCOLOGY PATHWAYS ESOPH

HEALTH SUMMARY OBJECTS

VA-ONCOLOGY PATHWAYS ESOPHAGEAL (TIU)

TIU DOCUMENT DEFINITION

VA-ONCOLOGY PATHWAYS ESOPHAGEAL

REMINDER DIALOG

VA-ONCOLOGY ESOPH CANCER IVB SCC PATHWAYS
VA-ONCOLOGY ESOPH CANCER IVB ADC PATHWAYS
VA-ONCOLOGY ESOPH CANCER ADC+SCC PATHWAYS

This update is being distributed as a web host file. The address for the host file is:
https://REDACTED/UPDATE_2_0_407.PRD

The file will be installed using Reminder Exchange, programmer access is not required.

Installation:

=====

This update can be loaded with users on the system. Installation will take less than 15 minutes.
Post install will take about an hour.

Pre-Install

Using Reminder Dialog manager, Dialog Manager, Change View to Element View and review the following elements to identify the quick order that your site may have added as an additional finding.

VA-ONC HOSPICE REFERRAL
VA-ONC RADIATION ONCOLOGY CONSULT

Install Example

Go to Reminder exchange in Vista.

To Load the exchange file, use LWH. The URL is: https://REDACTED/UPDATE_2_0_407.PRD

+ Next Screen - Prev Screen ?? More Actions	
CFE	Create Exchange File Entry
CHF	Create Host File
CMM	Create MailMan Message
DFE	Delete Exchange File Entry
IFE	Install Exchange File Entry
IH	Installation History
LHF	Load Host File
LMM	Load MailMan Message
LR	List Reminder Definitios
LWH	Load Web Host File
RI	Reminder Definition Inqy
RP	Repack

You should receive a message that the file was successfully loaded into your reminder exchange file.

Search and locate exchange file name UPDATE_2_0_407 VA-ONC CLINICAL PATHWAYS – ESOPHAGEAL CANCER

```

+Item  Entry                               Source                               Date Packed
635    UPDATE_2_0_407 VA-ONC
        CLINICAL PATHWAYS -
        ESOPHAGEAL CANCER
636    UPDATE_2_0_41 FUNCTIONAL AND
        PSYCHOSOCIAL TEMPLATE
637    UPDATE_2_0_41 FUNCTIONAL AND
        PSYCHOSOCIAL TEMPLATE
638    UPDATE_2_0_42 VA-TELERETINOPAT
        HY NOTES
639    UPDATE_2_0_43 VA-SUICIDE RISK
+      + Next Screen  - Prev Screen  ?? More Actions  >>>
CFE    Create Exchange File Entry        LHF    Load Host File
CHF    Create Host File                   LMM    Load MailMan Message
CMM    Create MailMan Message             LR     List Reminder Definitions
DFE    Delete Exchange File Entry        LWH    Load Web Host File
IFE    Install Exchange File Entry       RI     Reminder Definition Inquiry
IH     Installation History               RP     Repack
Select Action: Next Screen// IFE    Install Exchange File Entry
Enter a list or range of numbers (1-860): 635

```

At the **Select Action** prompt, enter **IFE** for Install Exchange File Entry
Enter the number that corresponds with your entry titled UPDATE_2_0_407 VA-ONC CLINICAL PATHWAYS – ESOPHAGEAL CANCER (in this example it is entry 635, it will vary by site) that is dated 12/08/2023.

```

Package version: 2.0P65

Description:
The following Clinical Reminder items were selected for packing:
REMINDER DIALOG
  VA-ONCOLOGY ESOPH CANCER IVB ADC PATHWAYS
  VA-ONCOLOGY ESOPH CANCER ADC+SCC PATHWAYS
  VA-ONCOLOGY ESOPH CANCER IVB SCC PATHWAYS

REMINDER TERM
  VA-REMINDER UPDATE_2_0_407

Keywords:

+      Enter ?? for more actions  >>>
IA    Install all Components       IS    Install Selected Component
Select Action: Next Screen// IA

```

At the **Select Action** prompt, type **IA** for Install all Components and hit enter.

For all new entries in any category, you will choose **I to Install**
If you are prompted to overwrite any items, choose **S to Skip**.

You will then be prompted to install the first dialog component.

```
Packed reminder dialog: VA-ONCOLOGY ESOPH CANCER IVB SCC PATHWAYS [NATIONAL DIALOG]
+Item Seq. Dialog Findings Type Exists
 10 10.100 VA-ONC PATHWAYS ESOPH PRIOR DATA OBJECT element
      Finding: *NONE*
 11 10.120 VA-ONC PATHWAYS ESOPH PREVIOUS DATA CLICK TO element
      INCLUDE
      Finding: *NONE*
 12 10.130 VA-EL ONC DASHED LINE NO SHOW element X
      Finding: *NONE*
 13 10.150 VA-ONC ON PATHWAY INSTRUCTIONS element X
      Finding: *NONE*
 14 10.160 VA-GP ONC ESOPH CA IVB SCC PATHWAYS group
      Finding: *NONE*
 15 10.160.110 VA-GP ONC ESOPH IVB SCC FIRST LINE MAIN group
      CHECKBOX
      Finding: VA-ONC ESOPH STAGE IVB SCC FL CLINICAL PATHWAY X
      (HEALTH FACTOR)
+ + Next Screen - Prev Screen ?? More Actions
DD Dialog Details DT Dialog Text
DF Dialog Findings DU Dialog Usage
DS Dialog Summary IA Install All
Select Action: Next Screen// IA
```

Select IA to install all. This will install the reminder dialog **VA-ONCOLOGY ESOPH CANCER IVB SCC PATHWAYS**.

Install reminder dialog and all components with no further changes: Y//Y

```
Packed reminder dialog: VA-ONCOLOGY ESOPH CANCER IVB SCC PATHWAYS [NATIONAL DIALOG]
VA-ONCOLOGY ESOPH CANCER IVB SCC PATHWAYS (reminder dialog) installed from exchange file.
+Item Seq. Dialog Findings Type Exists
 1 VA-ONCOLOGY ESOPH CANCER IVB SCC PATHWAYS dialog X
 2 10 VA-GP ONC ESOPH CANCER PATHWAYS IVB SCC group X
      Finding: *NONE*
 3 10.20 VA-ONC ESOPH CANCER PATHWAY VERSION element X
      Finding: *NONE*
 4 10.40 VA-ONC PATHWAY GEN INSTRUCT/INTENDED USER element X
      Finding: VIEW PROGRESS NOTE TEXT (REMINDER GENERAL FINDING) X
 5 PXRМ GF VIEW BUTTON prompt X
 6 10.60 VA-ONC ESOPH SHAREPOINT VIEW ABBREVIATION element X
      Finding: VIEW PROGRESS NOTE TEXT (REMINDER GENERAL FINDING) X
 7 PXRМ GF VIEW BUTTON prompt X
 8 10.80 VA-ONC ESOPH CA PRES CONDITION VIEW BOX element X
      Finding: VIEW PROGRESS NOTE TEXT (REMINDER GENERAL FINDING) X
 9 PXRМ GF VIEW BUTTON prompt X
+ + Next Screen - Prev Screen ?? More Actions
DD Dialog Details DT Dialog Text IS
DF Dialog Findings DU Dialog Usage OU
DS Dialog Summary IA Install All
Select Action: Next Screen// Q
```

After install, select Q for quit to move to the next dialog.

You will then be prompted to install the second dialog component.

```
Packed reminder dialog: VA-ONCOLOGY ESOPH CANCER ADC+SCC PATHWAYS [NATIONAL DIAL
```

Item	Seq.	Dialog Findings	Type	Exists
1		VA-ONCOLOGY ESOPH CANCER ADC+SCC PATHWAYS	dialog	
2	10	VA-GP ONC ESOPH CANCER PATHWAYS ADC/SCC Finding: *NONE*	group	
3	10.20	VA-ONC ESOPH CANCER PATHWAY VERSION Finding: *NONE*	element	X
4	10.40	VA-ONC PATHWAY GEN INSTRUCT/INTENDED USER Finding: VIEW PROGRESS NOTE TEXT (REMINDER GENERAL FINDING)	element	X
5	10.60	VA-ONC ESOPH SHAREPOINT VIEW ABBREVIATION Finding: VIEW PROGRESS NOTE TEXT (REMINDER GENERAL FINDING)	element	X
6	10.80	VA-ONC ESOPH CA PRES CONDITION VIEW BOX Finding: VIEW PROGRESS NOTE TEXT (REMINDER GENERAL FINDING)	element	X
7	10.100	VA-ONC PATHWAYS ESOPH PRIOR DATA OBJECT Finding: *NONE*	element	X
8	10.120	VA-ONC PATHWAYS ESOPH PREVIOUS DATA CLICK TO	element	X
+ + Next Screen - Prev Screen ?? More Actions				
DD	Dialog Details		DT Dialog Text	IS Install Selected
DF	Dialog Findings		DU Dialog Usage	QU Quit
DS	Dialog Summary		IA Install All	
Select Action: Next Screen// IA				

Select IA to install the dialog. This will install the reminder dialog **VA-ONCOLOGY ESOPH CANCER ADC+SCC PATHWAYS**.

Install reminder dialog and all components with no further changes: Y//Y

```
Packed reminder dialog: VA-ONCOLOGY ESOPH CANCER ADC+SCC PATHWAYS [NATIONAL DIAL
```

Item	Seq.	Dialog Findings	Type	Exists
1		VA-ONCOLOGY ESOPH CANCER ADC+SCC PATHWAYS	dialog	X
2	10	VA-GP ONC ESOPH CANCER PATHWAYS ADC/SCC Finding: *NONE*	group	X
3	10.20	VA-ONC ESOPH CANCER PATHWAY VERSION Finding: *NONE*	element	X
4	10.40	VA-ONC PATHWAY GEN INSTRUCT/INTENDED USER Finding: VIEW PROGRESS NOTE TEXT (REMINDER GENERAL FINDING)	element	X
5	10.60	VA-ONC ESOPH SHAREPOINT VIEW ABBREVIATION Finding: VIEW PROGRESS NOTE TEXT (REMINDER GENERAL FINDING)	element	X
6	10.80	VA-ONC ESOPH CA PRES CONDITION VIEW BOX Finding: VIEW PROGRESS NOTE TEXT (REMINDER GENERAL FINDING)	element	X
7	10.100	VA-ONC PATHWAYS ESOPH PRIOR DATA OBJECT Finding: *NONE*	element	X
8	10.120	VA-ONC PATHWAYS ESOPH PREVIOUS DATA CLICK TO	element	X
+ + Next Screen - Prev Screen ?? More Actions				
DD	Dialog Details		DT Dialog Text	IS Install Selected
DF	Dialog Findings		DU Dialog Usage	QU Quit
DS	Dialog Summary		IA Install All	
Select Action: Next Screen// Q				

Select Q to quit and move to the next dialog.

You will then be prompted to install the last dialog component.

```
Packed reminder dialog: VA-ONCOLOGY ESOPH CANCER IVB ADC PATHWAYS [NATIONAL DIAL
Item  Seq. Dialog Findings                                     Type  Exists
  1    VA-ONCOLOGY ESOPH CANCER IVB ADC PATHWAYS             dialog
  2    10 VA-GP ONC ESOPH CANCER PATHWAYS IVB ADC             group
      Finding: *NONE*
  3    10.20 VA-ONC ESOPH CANCER PATHWAY VERSION              element  X
      Finding: *NONE*
  4    10.40 VA-ONC PATHWAY GEN INSTRUCT/INTENDED USER        element  X
      Finding: VIEW PROGRESS NOTE TEXT (REMINDER GENERAL FINDING)
  5    10.60 VA-ONC ESOPH SHAREPOINT VIEW ABBREVIATION        element  X
      Finding: VIEW PROGRESS NOTE TEXT (REMINDER GENERAL FINDING)
  6    10.80 VA-ONC ESOPH CA PRES CONDITION VIEW BOX          element  X
      Finding: VIEW PROGRESS NOTE TEXT (REMINDER GENERAL FINDING)
  7    10.100 VA-ONC PATHWAYS ESOPH PRIOR DATA OBJECT        element  X
      Finding: *NONE*
  8    10.120 VA-ONC PATHWAYS ESOPH PREVIOUS DATA CLICK TO   element  X
+      + Next Screen  - Prev Screen  ?? More Actions
DD Dialog Details      DT Dialog Text          IS Install Selected
DF Dialog Findings     DU Dialog Usage         QU Quit
DS Dialog Summary      IA Install All
Select Action: Next Screen// IA
```

Select IA to install the dialog. This will install the reminder dialog **VA-ONCOLOGY ESOPH CANCER IVB ADC PATHWAYS**.

Install reminder dialog and all components with no further changes: Y//Y

```
Packed reminder dialog: VA-ONCOLOGY ESOPH CANCER IVB ADC PATHWAYS [NATIONAL DIAL
VA-ONCOLOGY ESOPH CANCER IVB ADC PATHWAYS (reminder dialog) installed from excha
Item  Seq. Dialog Findings                                     Type  Exists
  1    VA-ONCOLOGY ESOPH CANCER IVB ADC PATHWAYS             dialog  X
  2    10 VA-GP ONC ESOPH CANCER PATHWAYS IVB ADC             group  X
      Finding: *NONE*
  3    10.20 VA-ONC ESOPH CANCER PATHWAY VERSION              element  X
      Finding: *NONE*
  4    10.40 VA-ONC PATHWAY GEN INSTRUCT/INTENDED USER        element  X
      Finding: VIEW PROGRESS NOTE TEXT (REMINDER GENERAL FINDING)
  5    10.60 VA-ONC ESOPH SHAREPOINT VIEW ABBREVIATION        element  X
      Finding: VIEW PROGRESS NOTE TEXT (REMINDER GENERAL FINDING)
  6    10.80 VA-ONC ESOPH CA PRES CONDITION VIEW BOX          element  X
      Finding: VIEW PROGRESS NOTE TEXT (REMINDER GENERAL FINDING)
  7    10.100 VA-ONC PATHWAYS ESOPH PRIOR DATA OBJECT        element  X
      Finding: *NONE*
  8    10.120 VA-ONC PATHWAYS ESOPH PREVIOUS DATA CLICK TO   element  X
+      + Next Screen  - Prev Screen  ?? More Actions
DD Dialog Details      DT Dialog Text          IS Install Selected
DF Dialog Findings     DU Dialog Usage         QU Quit
DS Dialog Summary      IA Install All
Select Action: Next Screen// Q
```

Select Q to quit and you will be returned to the following screen

```

Package Version: 2.0P65

Description:
The following Clinical Reminder items were selected for packing:
REMINDER DIALOG
VA-ONCOLOGY ESOPH CANCER IVB ADC PATHWAYS
VA-ONCOLOGY ESOPH CANCER ADC+SCC PATHWAYS
VA-ONCOLOGY ESOPH CANCER IVB SCC PATHWAYS

REMINDER TERM
VA-REMINDER UPDATE_2_0_407

Keywords:

+      + Next Screen  - Prev Screen  ?? More Actions  >>>
IA  Install all Components          IS  Install Selected Component
Select Action: Next Screen// Q

```

Select Q for quit to exit the install

Post Installation

1. **Make the Dialog templates available to be attached to a Personal or Shared template or to be able to attach the dialog to a progress note title. (You can use the LINK feature in this menu for steps 1 and 4 if you choose to after creating the note titles in step 2)**

Select Reminder Managers Menu <TEST ACCOUNT> Option:

CP CPRS Reminder Configuration

- CA Add/Edit Reminder Categories
- CL CPRS Lookup Categories
- CS CPRS Cover Sheet Reminder List
- MH Mental Health Dialogs Active
- PN Progress Note Headers
- RA Reminder GUI Resolution Active
- TIU TIU Template Reminder Dialog Parameter**
- DEVL Evaluate Coversheet List on Dialog Finish
- DL Default Outside Location
- PT Position Reminder Text at Cursor
- LINK Link Reminder Dialog to Template
- TEST CPRS Coversheet Time Test
- NP New Reminder Parameters
- GEC GEC Status Check Active
- WH WH Print Now Active

Select CPRS Reminder Configuration <TEST ACCOUNT> Option:

TIU TIU Template Reminder Dialog Parameter

Reminder Dialogs allowed as Templates may be set for the following:

- 1 User USR [choose from NEW PERSON]
- 3 Service SRV [choose from SERVICE/SECTION]
- 4 Division DIV [SALT LAKE CITY]

5 System SYS [NATREM.FO-SLC.MED.VA.GOV]
Enter selection: **5** Choose the appropriate number for your site. Your site may do this by System or other levels. The example below uses SYSTEM level.

Setting Reminder Dialogs allowed as Templates for System:

NATREM.FO-SLC.MED.VA.GOV

Select Display Sequence:

388 VA-COVID-19 TELEPHONE FOLLOW-UP

389 VA-SRA-CONSULT RESPONSE (D)

*When you type a question mark above, you will see the list of #'s (with dialogs) that are already taken. Choose a number **NOT** on this list. For this example, 391 is not present so I will use 391.*

Select Display Sequence: **391**

Are you adding 391 as a new Display Sequence? Yes// **YES**

Display Sequence: 391// <Enter> 391

Clinical Reminder Dialog: **VA-ONCOLOGY ESOPH CANCER ADC+SCC PATHWAYS**

reminder dialog NATIONAL ...OK? Yes// <Enter> (Yes)

Select Display Sequence: **392**

Are you adding 392 as a new Display Sequence? Yes// **YES**

Display Sequence: 392// <Enter> 392

Clinical Reminder Dialog: **VA-ONCOLOGY ESOPH CANCER IVB SCC PATHWAYS** reminder dialog NATIONAL

...OK? Yes// <Enter> (Yes)

Select Display Sequence: **393**

Are you adding 393 as a new Display Sequence? Yes// **YES**

Display Sequence: 393// <Enter> 393

Clinical Reminder Dialog: **VA-ONCOLOGY ESOPH CANCER IVB ADC PATHWAYS** reminder dialog NATIONAL

...OK? Yes// <Enter> (Yes)

2. Create Note Titles:

The note titles to create to associate with these templates are:

ONCOLOGY ESOPHAGEAL STAGE I-IVA ADC/SCC PATHWAYS

ONCOLOGY ESOPHAGEAL STAGE IVB ADC PATHWAYS

ONCOLOGY ESOPHAGEAL STAGE IVB & LOCAL UNRESECT SCC PATHWAYS

VHA Enterprise Standard Title: HEMATOLOGY AND ONCOLOGY NOTE

You can add these to your document class where progress notes used by Oncology are located. **These titles should not be in your consult document class.**

Note: Comprehensive information on Creating new Document Classes and Titles can be found beginning on page 54 of the TIU/ASU Implementation Guide at the following link: [http://www.va.gov/vdl/documents/Clinical/CPRS-Text Integration Utility \(TIU\)/tiuim.pdf](http://www.va.gov/vdl/documents/Clinical/CPRS-Text%20Integration%20Utility%20(TIU)/tiuim.pdf)

3. **Add orders to the following reminder dialog elements.** Using the VistA menu Reminder Dialog Manager, Dialog Manager, Change View to Element View, edit the following elements and add your quick order as an additional finding.

VA-ONC ESOPH MED/RAD ONC REFERRAL - medical and radiation oncology consults

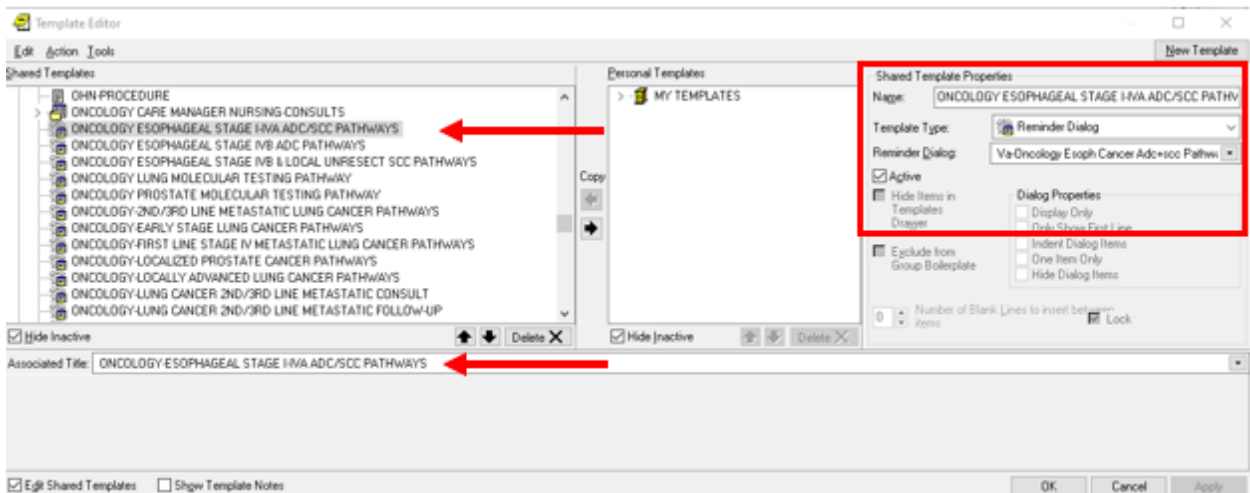
VA-ONC HOSPICE REFERRAL - hospice consult

VA-ONC MEDICAL ONCOLOGY CONSULT – medical oncology consult

VA-ONC RADIATION ONCOLOGY CONSULT – radiation oncology consult

4. **Associate the reminder dialogs with the note title in CPRS.**

In CPRS, open the Template Editor, expand Document Titles, select the appropriate folder (if applicable), then click New Template (top right-hand corner).



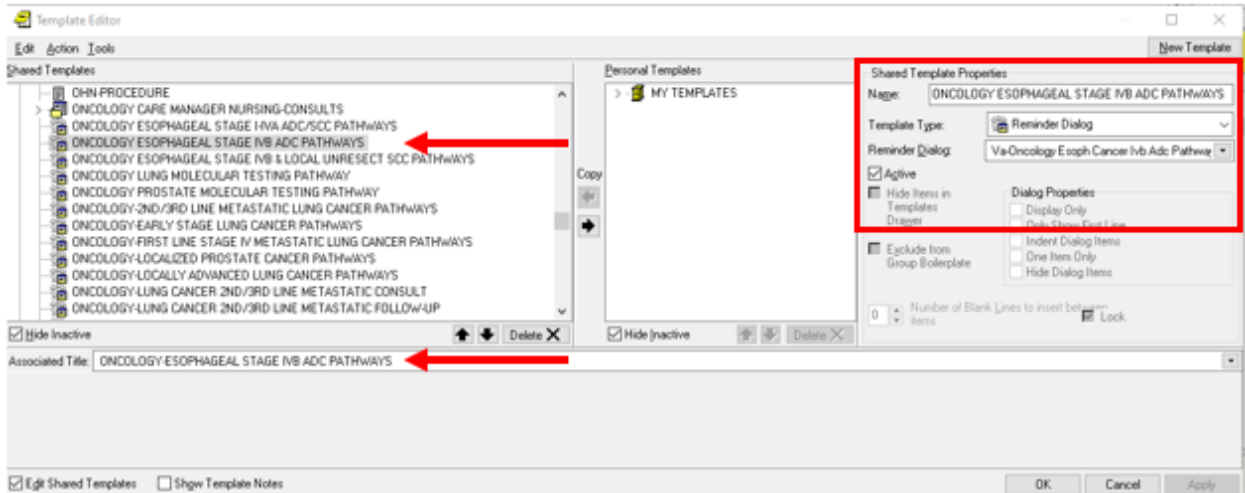
- a. Type in the following information:

Name: **ONCOLOGY ESOPH CANCER ADC+SCC PATHWAYS**

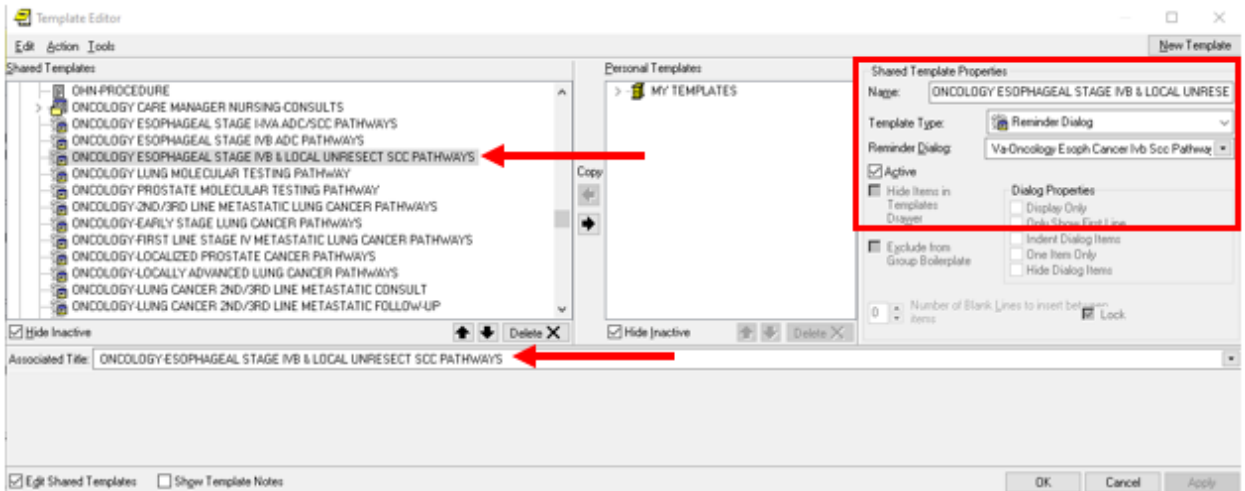
Template Type: **Reminder Dialog**

Reminder Dialog: **VA-ONCOLOGY ESOPH CANCER ADC+SCC PATHWAYS**

Next, type in the Associated Title name - **ONCOLOGY ESOPHAGEAL STAGE I-IVA ADC/SCC PATHWAYS** - then click Apply.

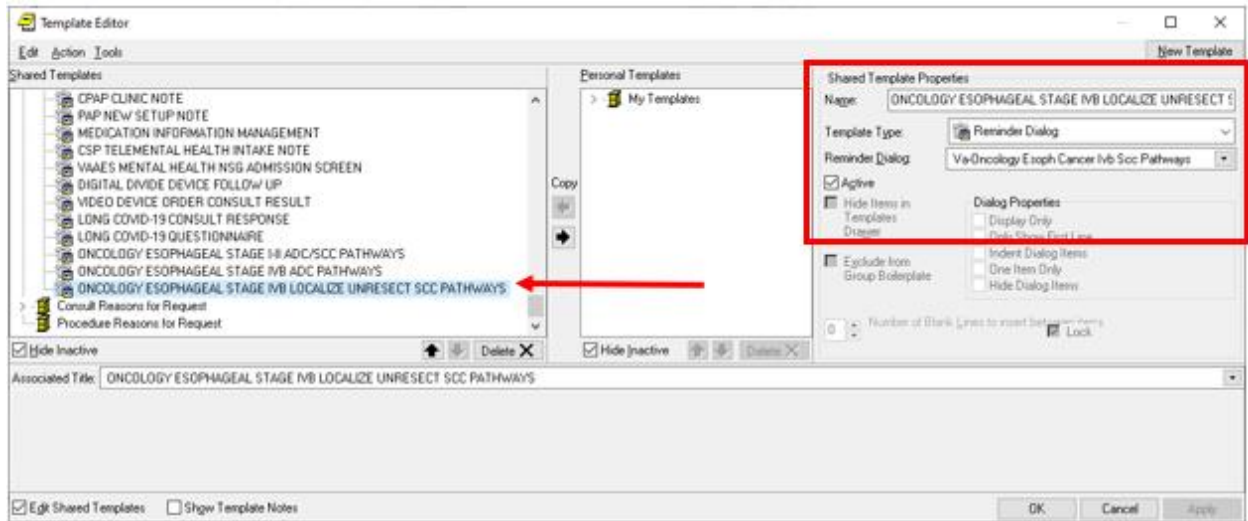


- b. Type in the following information:
 Name: **ONCOLOGY ESOPH CANCER IVB ADC PATHWAYS**
 Template Type: **Reminder Dialog**
 Reminder Dialog: **VA-ONCOLOGY ESOPH CANCER IVB ADC PATHWAYS**
 Next, type in the Associated Title name - **ONCOLOGY ESOPHAGEAL STAGE IVB ADC PATHWAYS** - then click Apply.



- c. Type in the following information:
 Name: **ONCOLOGY ESOPH CANCER IVB SCC PATHWAYS**
 Template Type: **Reminder Dialog**
 Reminder Dialog: **VA-ONCOLOGY ESOPH CANCER IVB SCC PATHWAYS**
 Next, type in the Associated Title name - **ONCOLOGY ESOPHAGEAL STAGE**

IVB & LOCAL UNRESECT SCC PATHWAYS - then click Apply.



5. Set up all templates released from the National Oncology Program Office in an Oncology Shared Templates folder.

The following templates have been released from the National Oncology Program Office.

These are the VISTA names listed below and correspond to the screen shot of how the shared template should be set up. These templates should be in a shared template drawer and attached to a note title (if wanted at your site). The exact note titles may vary at each site based on site specific naming conventions (see install guides for suggestions). These templates should be set up and available for use at your site (unless you do not provide any oncology services and have a waiver).

Recently added templates are bolded.

- VA-ONCOLOGY BREAST CANCER
- VA-ONCOLOGY MDC BREAST
- VA-ONCOLOGY TREATMENT PLAN BREAST
- VA-ONCOLOGY TREATMENT SUMMARY BREAST

- VA-ONCOLOGY COLORECTAL
- VA-ONCOLOGY MDC COLORECTAL
- VA-ONCOLOGY TREATMENT PLAN COLORECTAL
- VA-ONCOLOGY TREATMENT SUMMARY COLORECTAL

- VA-ONCOLOGY HEAD NECK
- VA-ONCOLOGY MDC HEAD NECK

VA-ONCOLOGY TREATMENT PLAN HEAD NECK
VA-ONCOLOGY TREATMENT SUMMARY HEAD NECK

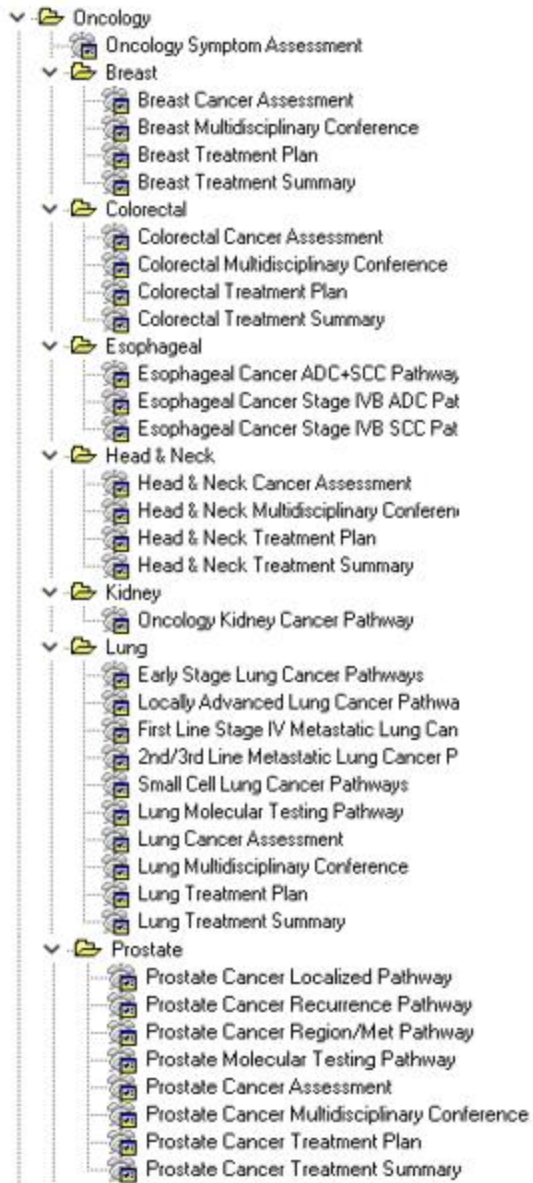
VA-ONCOLOGY ESOPH CANCER IVB ADC PATHWAYS*
VA-ONCOLOGY ESOPH CANCER ADC+SCC PATHWAYS*
VA-ONCOLOGY ESOPH CANCER IVB SCC PATHWAYS*

VA-ONCOLOGY KIDNEY CANCER PATHWAYS*

VA-ONCOLOGY LUNG EARLY STAGE PATHWAYS*
VA-ONCOLOGY LUNG LOCALLY ADVANCED PATHWAYS*
VA-ONCOLOGY LUNG FIRST LINE METS STAGE IV PATHWAYS*
*VA-ONCOLOGY LUNG RELAPSE PATHWAYS***
VA-ONCOLOGY LUNG SCLC PATHWAYS*
VA-ONCOLOGY LUNG PATHWAY*
VA-ONCOLOGY LUNG
VA-ONCOLOGY MDC THORACIC
VA-ONCOLOGY TREATMENT PLAN LUNG
VA-ONCOLOGY TREATMENT SUMMARY LUNG

VA-ONCOLOGY PRCA LOCALIZED PATHWAYS*
VA-ONCOLOGY PRCA RECURRENCE PATHWAYS*
VA-ONCOLOGY PRCA REGION/MET PATHWAYS*
VA-ONCOLOGY PRCA PATHWAY *
VA-ONCOLOGY PROSTATE
VA-ONCOLOGY MDC PROSTATE
VA-ONCOLOGY TREATMENT PLAN PROSTATE
VA-ONCOLOGY TREATMENT SUMMARY PROSTATE
VA-ONCOLOGY SYMPTOM ASSESSMENT SCALE

*Pathways templates MUST be utilized. They can be in the shared templates (as listed in the example below) or be attached to note titles. Please do not use the VISTA names, as they are not always intuitive to the providers. Use the suggested names below in your shared templates.



These templates were released in patch PXRМ*2.0*38, Update 20, Update 26, Update 106, Update 176, Update 246, Update 287, and Update 341, Update 367.

Install guides can be found at: REDACTED

NOTE: *If there are any questions or problems during the installation, please notify your local IT support to log a national help desk ticket or contact the VA Service Desk and have them submit a national ticket to:*

Category: Affected Service

Affected Service: VistA - Clinical Reminders