



VA-EBOLA RISK TRIAGE TOOL
Reminder Dialog Template
Patch PXRM*2*54
Installation Guide

November 2014

TABLE OF CONTENTS

Contents

1. INTRODUCTION.....	3
VA Links:	3
Ebola web links:	3
2. INSTALLATION:.....	4
3. POST INSTALLATION INSTRUCTION	6
3.1 Enabling the Reminder Dialog in VistA	6
3.2 Placing the Reminder Dialog in CPRS	7
3.3 Creating an “Ebola Templates” folder in Shared Templates	8
3.4 Placing the template in the Ebola Templates folder	9
3.5 Note Title	10
3.6 Creating a Note Title in Vista	10
3.7 Linking the Reminder Dialog Template to a Note Title	13
4. GLOSSARY OF TERMS AND ABBREVIATIONS.....	14
APPENDIX A.....	17
APPENDIX B.....	19

1. INTRODUCTION

VA is developing policies, procedures, and resources to define our response and approach to management of individuals who may have been exposed to Ebola Virus Disease. The VA-EBOLA RISK TRIAGE TOOL template is a product developed based on the Centers for Disease Control and Prevention (CDC) algorithm for evaluating individuals who have traveled in countries with active epidemics of this disease. The collaboration led by Dr. Theresa Cullen in Health Informatics included input from the Office of Public Health, the Office of Primary Care, the National Director for Infectious Disease, Health Solutions Management, Informatics Patient Safety, Health Information Management, the National Clinical Reminder Committee (NCRC), and the Nashville Usability Lab among others.

The template was created for use by VA clinical staff that is evaluating patients identified as having traveled to involved areas or as having contact with a known Ebola patient. Initial identification of patients with travel or contact risks may be done through several different pathways. These may include telephone hotlines, public service announcements, or signage at the medical center, all of which will direct patients to the appropriate intake location as established by the facility. Patient check-in Kiosks in clinic areas will have a screening question about travel to affected areas. Patients who enter a positive response will be immediately directed to clinic staff. Clinic check-in staff may also ask the initial questions about travel or contact. Patients with a positive response will also immediately be directed to clinical staff in compliance with locally established protocols. The VA-EBOLA RISK TRIAGE TOOL is intended for use by the clinical staff that assesses patients referred through any of these pathways. Additional clinical information about Ebola is available at the VA Ebola Outbreak site and the CDC Ebola Hemorrhagic Fever home page (see below).

The template follows the CDC algorithm in guiding the assessment and recommending appropriate follow-up and actions based on the findings and risk level identified. It is intended for use throughout VA as the approved template for assessing these patients. It is sponsored by the Office of Public Health which will oversee use, evaluate data collected, and update recommendations as needed for this rapidly evolving disease. For additional information please contact Watch Officer at Outlook email address WatchOfficer-VHA@va.gov

VA Links:

- [VA Office of Public Health Ebola Virus Disease Information](#)
- [VA Office of Public Health Ebola Virus Outbreak Frequently Asked Questions \(FAQ\)](#)

Ebola web links:

- [CDC Ebola website](#) for the most updated information on the Ebola virus outbreak
- [Checklist for Patients Being Evaluated for Ebola Virus Disease \(EVD\) in the United States](#)
- [Ebola Virus Disease \(Ebola\) - Algorithm for Evaluation of the Returned Traveler](#) *
- [Informational PowerPoint: Ebola Facts](#)
- [FAQ: Safe Management of Patients with Ebola Virus Disease \(EVD\) in US Hospitals](#)
- [Ebola Education Web page](#)
- [Johns Hopkins Ebola symposium](#)

2. INSTALLATION

This patch can be installed with users on the system, but it should be done during non-peak hours. Estimated Installation Time: 1-2 minutes

The installation needs to be done by a person with DUZ(0) set to "@."

1. Retrieve the host file from one of the following locations (with the ASCII file type):

Albany	<u>REDACTED</u>	<u>REDACTED</u>
Hines	<u>REDACTED</u>	<u>REDACTED</u>
Salt Lake City	<u>REDACTED</u>	<u>REDACTED</u>

2. Install the patch first in a training or test account.

Installing in a non-production environment will give you time to get familiar with new functionality and complete the setup for reminders and dialogs prior to installing the software in production.

3. Load the distribution.

In programmer mode type, D ^XUP, select the Kernel Installation & Distribution System menu (XPD MAIN), then the Installation option, and then the option LOAD a Distribution. Enter your directory name followed by the Host File name at the Host File prompt.

Example

```
Select Installation Option: LOAD a Distribution
Enter a Host File: <your directory name>PXRM_2_0_54.KID
KIDS Distribution saved on
```

From the Installation menu, you may elect to use the following options:

4. Backup a Transport Global

This option will create a backup message of any routines exported with the patch. It will NOT back up any other changes such as DDs or templates.

a. Compare Transport Global to Current System

This option will allow you to view all changes that will be made when the patch is installed. It compares all components of the patch (routines, DDs, templates, etc.).

5. Install the build.

From the Installation menu on the Kernel Installation and Distribution System (KIDS) menu, run the option Install Package(s). Select the build PXRMP*2.0*54 and proceed with the install. If you have problems with the installation, log a Remedy ticket and/or call the National Help Desk to report the problem.

```
Select Installation & Distribution System Option: Installation
Select Installation Option: INSTALL PACKAGE(S)
Select INSTALL NAME: PXRMP*2.0*54
```

NOTE: DO NOT QUEUE THE INSTALLATION

Answer "NO" to the following prompts:

Want KIDS to INHIBIT LOGONs during install? NO// **NO**

Want to DISABLE Scheduled Options, Menu Options, and Protocols? NO//NO

Installation Example

See [Appendix A](#)

6. Install File Print

Use the KIDS Install File Print option to print out the results of the installation process.

```
Select Utilities Option: Install File Print
Select INSTALL NAME: PXRMP*2.0*54
```

7. Build File Print

Use the KIDS Build File Print option to print out the build components.

```
Select Utilities Option: Build File Print
Select BUILD NAME: PXRMP*2.0*54
DEVICE: HOME//
```

8. Post-installation routines

After successful installation, the following init routines may be deleted:

```
PXRMP54E
PXRMP54I
```

[\[return to table of contents\]](#)

3. POST INSTALLATION INSTRUCTION

3.1 Enabling the Reminder Dialog in VistA


Before linking the dialog to a title or using it in Shared templates you must first add it into the TIU Template Reminder Dialog Parameter list.

^GENERAL PARAMETER TOOLS <ENTER>

LIST VALUES FOR A ~~SECTION~~ LIST VALUES
FOR A ~~SECTION~~ ENTITY LIST VALUES FOR A
SELECTED PACKAGE LIST VALUES FOR A
SELECTED TEMPLATE EDIT PARAMETER
VALUES
EDIT PARAMETER VALUES ~~SECTION~~ EDIT PARAMETER
~~SECTION~~ KEYWORD

SELECT GENERAL PARAMETER TOOLS OPTION: **EDIT PARAMETER VALUES**

--- EDIT PARAMETER VALUES ---

SELECT PARAMETER DEFINITION NAME: **TIU TEMPLATE REMINDER DIALOGS** REMINDER 
ALLOWED AS TEMPLATES
TIU TEMPLATE REMINDER DIALOGS MAY BE SET FOR THE ~~SECTION~~

1	USER	USR	[CHOOSE FROM NEW 
3	SERVICE	SRV	[CHOOSE FROM 
4	DIVISION	DIV	[CHOOSE FROM 
5	SYSTEM	SYS	[TEST.V02.MED.VA.GOV]

ENTER SELECTION: **5 SYSTEM**

--- SETTING TIU TEMPLATE REMINDER DIALOGS FOR ~~SECTION~~ NAME OF YOUR SYSTEM WILL
APPEAR IN THIS AREA

SELECT DISPLAY SEQUENCE: **ENTER A UNIQUE NUMBER (YOU MAY ? ~~SECTION~~ THIS OPTION
TO OBTAIN THE LIST OF TEMPLATES ASSOCIATED WITH THIS PARAMETER)**

ARE YOU ADDING **(THE NEW DISPLAY SEQUENCE NUMBER)** AS A NEW ~~SECTION~~ YES// **SELECT <ENTER>**
TO CONFIRM

CLINICAL REMINDER DIALOG: **VA-EBOLA TRIAGE RISK TOOL** dialog NATIONAL
type in the name of the dialog
...OK? Yes// **<ENTER>**

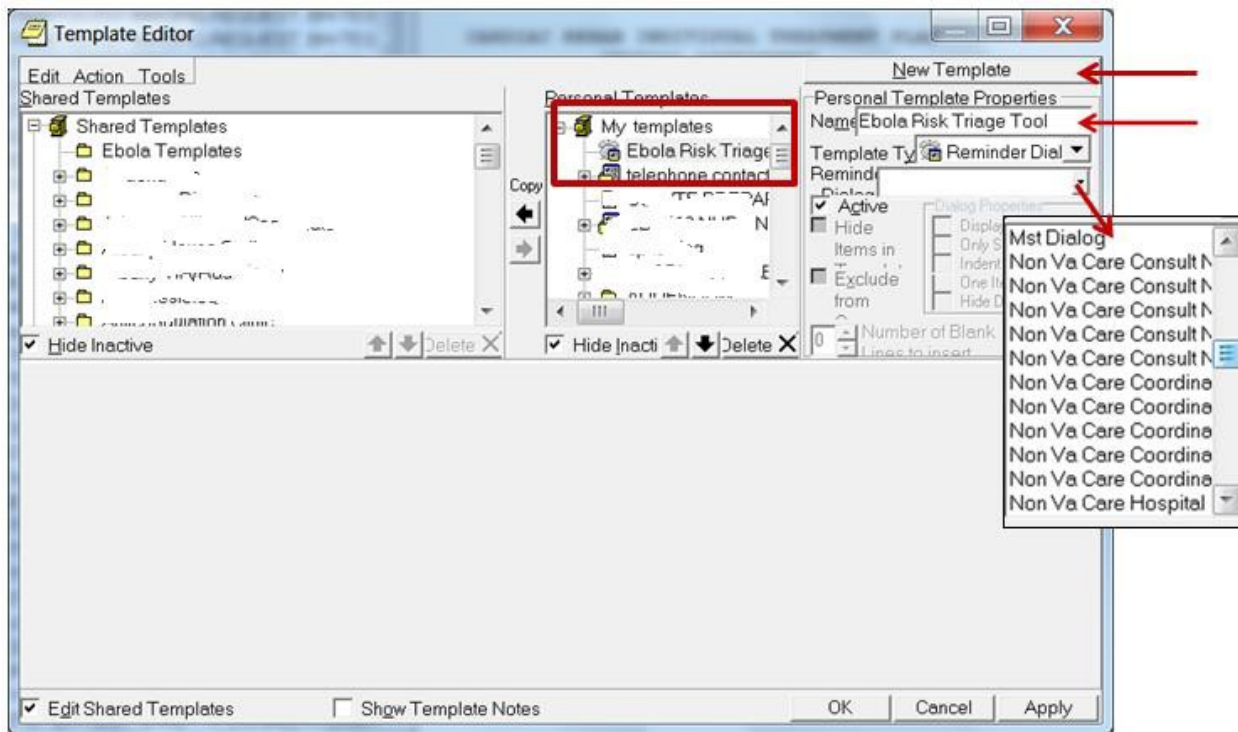
[\[return to table of contents\]](#)

3.2 Placing the Reminder Dialog in CPRS

Link the dialogs from the CPRS TEMPLATE EDITOR.

- Open CPRS, select any patient and then the Notes tab.
- Open My Templates.
- Create a new template and give it an appropriate name (right side under Personal Templates).
- In the Template Type box select Reminder Dialog.
- Select the drop down arrow in the Reminder Dialog window and locate and select the EBOLA Risk Triage Tool reminder dialog.
- Select the APPLY button.

After placing the reminder dialog in your personal templates you may want to take a few minutes to test the reminder to ensure it performs correctly (i.e. text wraps appropriately, health factors link to the note, etc.) before making it available for your clinical staff.



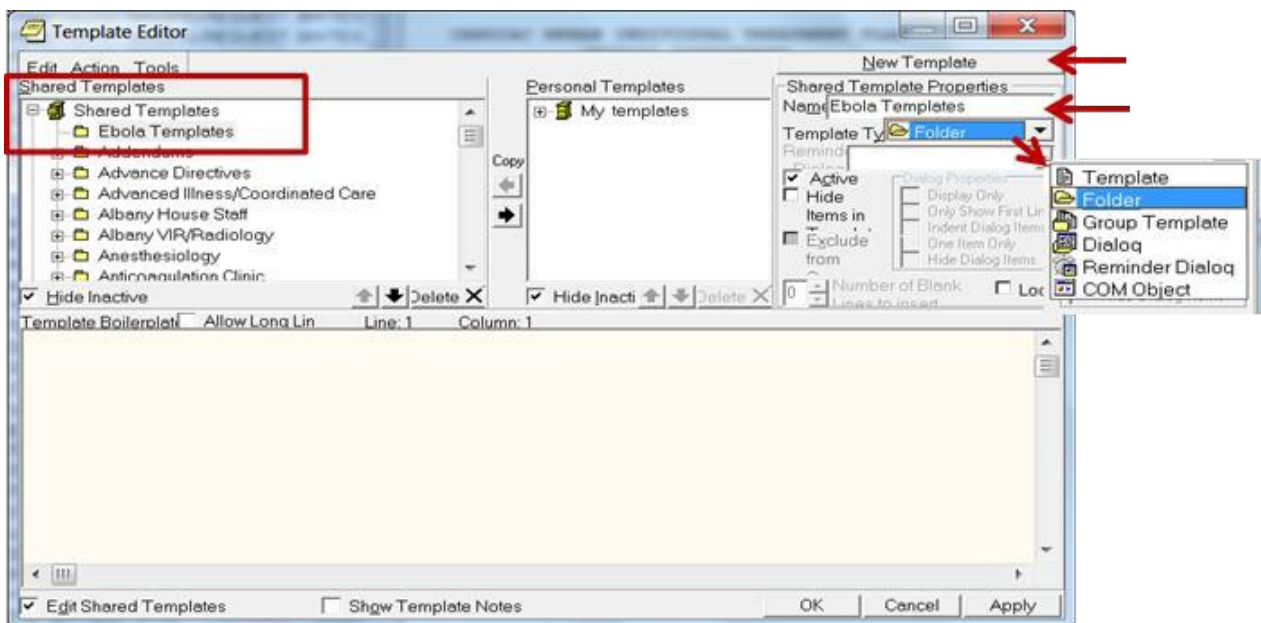
While using the CPRS Template Editor, if at any time the settings do not look correct, NEVER click the “Apply” button, but instead click “Cancel”, then start over.

[\[return to table of contents\]](#)

3.3 Creating an “Ebola Templates” folder in Shared Templates

It is recommended to create a folder for this template under Shared templates for the “Ebola Risk Triage Tool” and other Ebola screening templates you may have,. Additionally the Ebola Risk Triage tool template can be added to any other folder under Shared Templates. It is recommended that the “Ebola Risk Triage Tool” be placed in a highly visible and easily accessible position within Shared Templates. In this example an “Ebola Templates” folder is created under Shared Templates:

- Access CPRS, select any patient and select the Notes tab.
- Select Options, Edit Share templates.
- Select and open Shared Templates (left side of the screen).
- On the right side of the template editor screen Select the New Template button and name New template Ebola Templates.
- Select the drop down arrow under the Template type box and select Folder.
- Select Apply to save this folder.

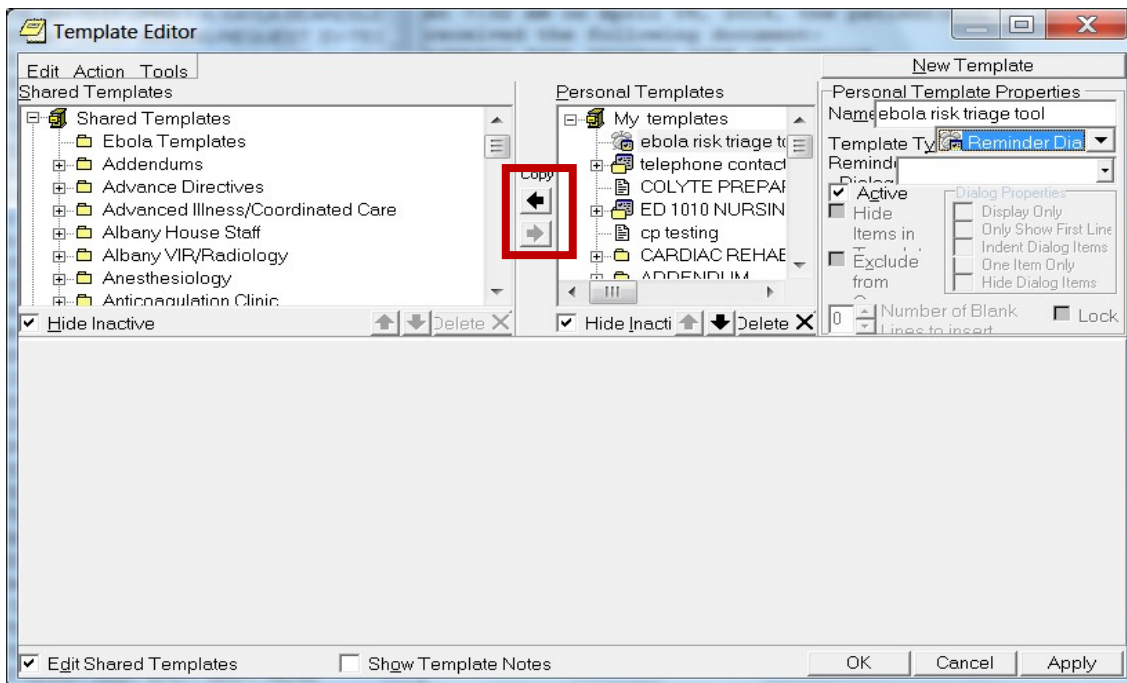


[\[return to table of contents\]](#)

3.4 Placing the template in the Ebola Templates folder

Once you have created the template into My Templates and created a Share Template folder Ebola Templates you can copy the template from My Templates to the Ebola Template folder, making it viewable and available to all CPRS users.

- Access CPRS, select any patient and select the Notes tab.
- Select Options, Edit Share templates.
- Select and open Shared Templates (left side of the screen).
- Select the Ebola Templates folder.
- On the right side of the template editor screen select the Ebola Risk Triage Tool template.
- Select the bold Copy button between the two panes.
- Select Apply to save the template into the folder.



[\[return to table of contents\]](#)

3.5 Note Title

It is important to consult with the appropriate Health Information Management and/or Health Informatics Committee to determine if the creation of a new local note title is necessary and/or desired functionality at your facility. Follow your facility's policy for creating a new local note title. For more information on TIU Note Title and Templates you may access the [VHA HIMS Practice Brief - TIU TITLES AND TEMPLATES](#)

It is recommended that you map your locally created title to one of two National Standard note titles "INFECTIOUS DISEASE RISK ASSESSMENT SCREENING NOTE" for a note title that will appear in the Notes Tab or "INFECTIOUS DISEASE CLINICAL WARNING" for a Clinical Warning title. For the completed clinical warning note to appear in the CWAD posting as well as the Notes Tab it must be created in the Clinical Warning TIU Hierarchy.


In this example a new local note title has been created "Infectious Disease Risk Assessment Screening" and mapped to a National Standard title "Infectious Disease Risk Assessment Screening Note".

3.6 Creating a Note Title in Vista

Navigate to the Manager Document Definition Menu in Vista

MANAGER DOCUMENT DEFINITION MENU ---

- 1 EDIT DOCUMENT DEFINITIONS
- 2 SORT DOCUMENT DEFINITIONS
- 3 CREATE DOCUMENT DEFINITIONS
- 4 CREATE OBJECTS
- 5 CREATE TIU/HEALTH SUMMARY OBJECTS

SELECT DOCUMENT DEFINITIONS (MANAGER) <TEST  **3** **CREATE DOCUMENT DEFINITIONS.**

CREATE DOCUMENT DEFINITIONS OCT 24, 2014@08:36:50 PAGE: 1 OF 1
BASICS

	NAME	TYPE
1	CLINICAL DOCUMENTS	CL
2	PROGRESS NOTES	CL
3	ADDENDUM	DC
4	DISCHARGE SUMMARY	CL
5	SHERI'S CLASS	CL
6	ZZCONSULTS	CL
7	MIKES TEST CLASS	DC
8	NANCY'S CLASS	CL
9	CLINICAL PROCEDURES	CL
10	SURGICAL REPORTS	CL
11	PAUL'S TEST CLASS	DC

[\[return to table of contents\]](#)

NEW USERS, PLEASE ENTER '?NEW' FOR HELP >>>
 CLASS/DOCUMENTCLASS NEXT N DETAILED N
 (TITLE) RESTART STATUS...
 (COMPONENT) BOILERPLATE TEXT DELETE

SELECT ACTION: NEXT LEVEL// **N=2 SELECT THE NUMBER THAT CORRESPONDS TO THE DOCUMENT CLASS WHERE THE TITLE SHOULD BE PLACED**

1	CLINICAL DOCUMENTS	CL
2	PROGRESS NOTES	CL
3	ADVANCE DIRECTIVE	DC
4	HISTORICAL TITLES	DC
5	CRISIS NOTE	DC
6	CLINICAL WARNING	DC
7	ADVERSE REACTION/ALLERGY	DC
8	ADDICTION SEVERITY INDEX	DC
9	BLIND REHABILITATION SMKE	DC
10	SURGICAL	DC
11	MEDICINE	DC
12	INFECTIOUS DISEASE	DC
13	CHAPLAIN	DC
14	NURSING	

+ ?HELP >SCROLLRIGHT PS/PL PRINTSCRN/LIST +/- >>>
 CLASS/DOCUMENTCLASS NEXT LEVEL DETAILED N
 (TITLE) RESTART STATUS...
 (COMPONENT) BOILERPLATE N DELETE

SELECT ACTION: NEXT SCREEN// **N=12 NEXT LEVEL DEPENDING ON HOW YOUR DOCUMENT HIERARCHY IS ARRANGED YOU MAY NEED TO OPEN ANOTHER LEVEL OF DOCUMENT CLASS**

CREATE DOCUMENT DEFINITIONS OCT 24, 2018 4:19 PAGE: 1 OF 1
 BASICS

+	NAME	TYPE
2	PROGRESS NOTES	CL
3	INFECTIOUS DISEASE	DC
4	NEW TITLE NOT	TL
5	PRIMARY CL	TL

?HELP >SCROLLRIGHT PS/PL ~~PROG~~ +/-
 >>> (CLASS/DOCUMENTCLASS) NEXT LEVEL
 DETAILED DISPLAY/EDIT
 TITLE RESTART STATUS...
 (COMPONENT) BOILERPLATE TEXT DELETE

SELECT ACTION: TITLE// TITLE

ENTER THE NAME OF A NEW INFECTIOUS DISEASE: **INFECTIOUS DISEASE ASSESSMENT SCREENING** ENTER THE **UNIQUE NAME INFECTIOUS DISEASE RISK ASSESSMENT SCREENING**

CLASS OWNER: CLINICAL COORDINATOR// **CLINICAL COORDINATOR** ENTER [OWNER] USUALLY THE **CLINICAL COORDINATOR (IT MAY DIFFER IN YOUR SYSTEM).**

1 CLINICAL COORDINATOR
 2 CLINICAL ~~COORD~~ CHOOSE 1-
 2: 1 CLINICAL ~~COORD~~

**YOU MUST MAP YOUR TITLE TO A VHA STANDARD TITLE
 EVERY LOCAL TITLE MUST BE MAPPED TO A VHA ENTERPRISE STANDARD TITLE.**

[\[return to table of contents\]](#)

DIRECT MAPPING TO ENTERPRISE STANDARD TITLE...
YOUR LOCAL TITLE IS: INFECTIOUS DISEASE RISK ASSESSMENT ■

NOTE: ONLY ACTIVE TITLES MAY BE SELECTED...

SELECT VHA ENTERPRISE STANDARD TITLE: INFECTIOUS ■ ■ ASSESSMENT SCREENING NOTE I FOUND A
MATCH OF: INFECTIOUS DISEASE RISK ASSESSMENT SCREENING NOTE
... OK? YES// YES

READY TO MAP LOCAL TITLE: INFECTIOUS DISEASE ■ SCREENING TO VHA
ENTERPRISE STANDARD TITLE: INFECTIOUS DISEASE RISK ASSESSMENT SCREENING NOTE

... OK? YES// YES
DONE.

STATUS: (A/I/T): INACTIVE// ACTIVE ENTRY ACTIVATED. **ACTIVATE THE NOTE ESO IT IS
SELECTABLE IN CPRS**

SEQUENCE: <ENTER>
MENU TEXT: INFECTIOUS DISEASE T REPLACE <ENTER>

ENTRY CREATED

CREATE DOCUMENT DEFINITIONS OCT 24, 2018 4:14

PAGE: 1 OF 1

BASICS

+	NAME	TYPE
2	PROGRESS NOTES	CL
3	INFECTIOUS DISEASE	DC
4	INFECTIOUS DISEASE RISK ASSESSMENT SCREENING	TL
5	NEW TITLE INFECT	TL
6	PRIMARY CARE	TL

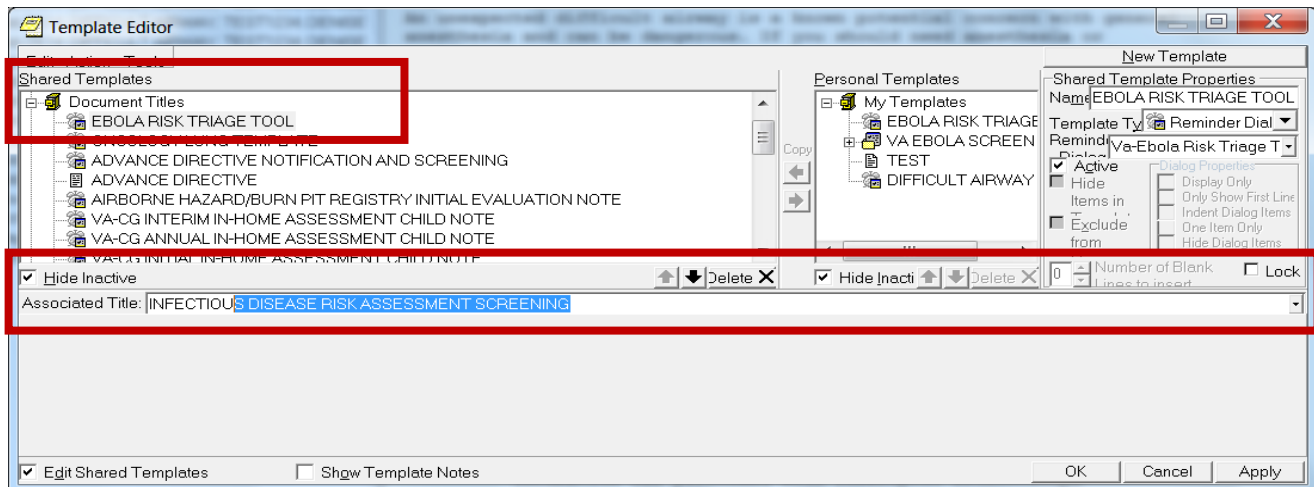
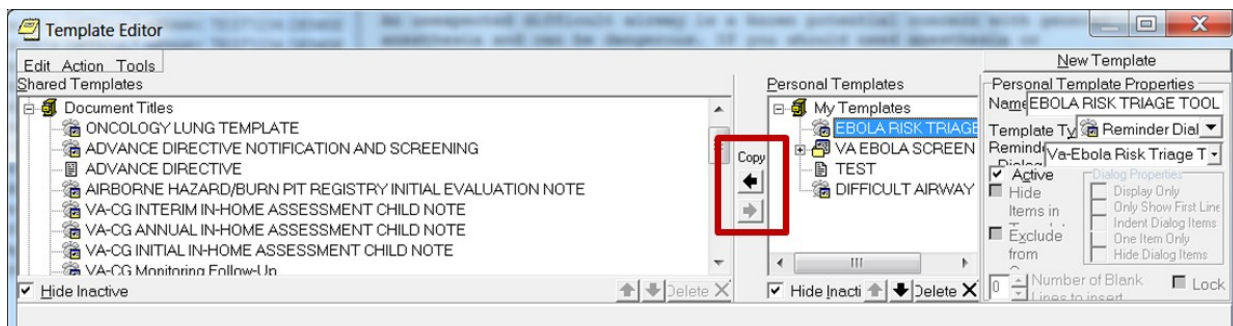
?HELP >SCROLLRIGHT PS/PL PRINTSCRN/LIST +/- >>>
(CLASS/DOCUMENTCLASS) NEXT LEVEL DETAILED ■
TITLE RESTART STATUS...
(COMPONENT) BOILERPLATE ■ DELETE
SELECT ACTION: ■

[\[return to table of contents\]](#)

3.7 Linking the Reminder Dialog Template to a Note Title

If your site would like to link the Ebola Risk Triage Tool reminder dialog template to a note title, this is done through the CPRS Template Editor.

- Access CPRS, select any patient and select the Notes tab.
- Select Options, Edit Share templates.
- Select and open Document Titles (left side of the screen).
- On the right side of the template editor screen select the Ebola Risk Triage Tool.
- Select the bold Copy arrow between the two panes, the template will copy over to the document titles.
- Select the Ebola Risk Triage Tool under document titles, then in the Associated Title box type in the name of the title Infectious Disease Risk Assessment Screening
- Select Apply to save.



[\[return to table of contents\]](#)

4. GLOSSARY OF TERMS AND ABBREVIATIONS

CAC – Clinical Applications Coordinator

CDC – Centers for Disease Control and Prevention

CPRS – Computerized Patient Record System, previous version dating back to 1997 was CPRS List Manager (Vista terminal emulation only) and no longer supported but is still accessible in VISTA.

CPRS GUI is the Windows version (since 1998), and is now called just CPRS ([CPRS page on VDL web site](#))

CWAD – Special note titles that display in the POSTINGS window in the CPRS header. Each letter stands for a category: C = Crisis Notes; W = Clinical Warnings; A = Allergies/Adverse Drug Reactions (ADR); D = Advance Directives

Data Object – also called a ‘Patient Data Object’ or just as ‘object’. These are either created by programmer (OI&T staff), or a CAC/HIS can create (TIU-HS object).

Dialog- A window in CPRS that opens in the format of a form to aid the user in creating text in a note and entering information into the record with a point and click interface.



Elements- A component in Vista that is configured to display content for the user when a dialog is opened.

EVD – Ebola Virus Disease

FAQ – Frequently Asked Questions

FORUM – the VA’s WAN (Wide Area Network), for mail, patch trackers, E3R repository

GUI – Graphical User Interface, referring to a Windows application

GUI Dialog Template/GUI Dialog - a CPRS template (plain text), TXMLformat, icons  

Health Factor- Informational data marker entered into the record to document patient information that is not readily identifiable with other information data entries in the system. Health Factors are used in TIU-Health Summary objects, in Health Summary types, and for data capture (for VA FileMan queries/reports, VISN data warehouse data pulls, etc.)

HIS – Health Informatics Specialist, another title for Clinical Applications Coordinator (CAC) with same responsibilities as a CAC.

Health Summary (HS) – a clinical module (package) in Vista; GMTS is the package’s name spacing ([Health Summary page on VDL web site](#))

Health Summary Types/Objects - A collection of data that displays to the user specific to the patient’s chart they are viewing.

Health Summary Type – a configuration of health summary components used as the basis of a report viewed in VISTA or the CPRS GUI, or used in a TIU-Health Summary object

Health Summary Object – the display settings of a Health Summary Type which is part of a TIU-Health Summary Object configuration.

Health Summary Component – an item that is used to create a health summary type (i.e., report). Health Summary components can be viewed via [GMTS HS ADHOC], or "List Health Summary Components [GMTS COMP LIST]", or "List Health Summary Component Descriptions [GMTS COMP DESC LIST]".

Host file – the file that is created in the reminder exchange option using .prd (Packed Reminder Definition format)

KIDS- Kernel Installation Distribution System

[\[return to table of contents\]](#)

Mapping - Linking of data markers such as Health Factors or other data entry items to reminder components such as reminder elements.

Name spacing – the prefixing, i.e., the initial 3-4 leading characters of a module or items in Vista

National Class - The highest collection of edit permissions which can be assigned to an item (versus VISN or LOCAL)

NCRC – National Clinical Reminder Committee

OPH – Office of Public Health

OIA – Office of Information and Analytics

OPC – Office of Primary Care

Packing List – the list of included items of a reminder exchange export when viewed from the 'IFE' action in the reminder exchange VISTA option


PCE – Patient Care Encounter (link to VDL web page)


PRD - .pdf file = Packed Reminder Definition (the alternate format for sending/receiving reminder exchange exports).

PXRM – namespace for the clinical reminders module ([clinical reminders page on VDL web site](#))

Reminder Taxonomy- Collection of specific codes associated with specific clinical conditions

Template- Commonly referred to as a dialog. See **dialog** for definition


Reminder Dialog  - a template created in [PXRM DIALOG/COMPONENT EDIT]; can be used without reminder logic (reminder definition)

Reminder Dialog Template  - a template created in [PXRM DIALOG/COMPONENT EDIT] and used in CPRS without linked reminder logic (reminder definition), either as a stand-alone template or the template is linked to a note title. Sometimes also referred to as a 'reminder template'.

Reminder Definition – used to create reminder logic for a clinical reminder or data object or reminder order check in PXRM REMINDER MANAGEMENT]

Reminder Exchange – the VISTA option [PXRM REMINDER EXCHANGE] used to create a reminder exchange message or .prd host file

Reminder Exchange Export – either a reminder exchange message or a .prd file moved out of the Reminder Exchange option in VISTA

Shared Templates-  Templates within the shared templates tree of CPRS, which the users can access and use while documenting in the chart

SHOP-ALL – a destination through the VA's FORUM to access and download reminder exchange messages that have been posted and stored (uses Mailman; must have FORUM access)

TIU -Text Integrated Utility, the notes repository (clinical package) in VISTA ([TIU page on VDL web site](#))

TIU Document Definition – it can be a CLASS, DOCUMENT CLASS, TITLE or OBJECT (file #8925.1). The reminder exchange packing list shows the TIU object labeled as "TIU DOCUMENT DEFINITION".

TIU-Health Summary Object (also known as a TIU-HS OBJECT) – [the link to TIU manual, ref \(creating health summary objects\)](#)

TIU Object – a data object /patient data object (but too general a term to know if this is programmer-created or CAC/HIS-created). See DATA OBJECT above.

TIU Template – a TXML template (see TXML or GUI Dialog).

TXML - the file format of 'plain text' CPRS templates, aka "GUI dialogs" or "GUI Dialog Templates". Uses the CPRS GUI Template Editor to create and edit

[\[return to table of contents\]](#)

TIU TEMPLATE FIELD file - file #8927 in VISTA, where TIU template fields are stored

TIU TEMPLATE file – file #8927 in VISTA, where TXML templates are stored

User Acceptance Testing - (UAT) critical software testing where end-users test the software in real-world scenarios before it is nationally released

URL – Uniform Resource Locator, i.e., a specific web address (Internet or Intranet)

Usability Testing- evaluating the software by testing with a representation of users that follow specific tasks (test scripts), identify problems, suggest improvements and determine the user's satisfaction with the product.

VDL –The Internet page for all VISTA manuals and documentation [VistA Documentation Library](#)

VMP- VistA Maintenance Project

APPENDIX A

Select Installation <TEST ACCOUNT> Option: install Package(s)

Select INSTALL NAME: PXRM*2.0*54 10/31/14@09:04:59

=> EBOLA RISK TRIAGE TOOL ;Created on Oct 28, 2014@10:58:40

This Distribution was loaded on Oct 31, 2014@09:04:59 with header of

EBOLA RISK TRIAGE TOOL ;Created on Oct 28, 2014@10:58:40

It consisted of the following Install(s):

PXRM*2.0*54

Checking Install for Package PXRM*2.0*54

Install Questions for PXRM*2.0*54

Incoming Files:

811.8 REMINDER EXCHANGE (including data)

Note: You already have the 'REMINDER EXCHANGE' File.

I will OVERWRITE your data with mine.

Want KIDS to INHIBIT LOGONs during the install? NO//

Want to DISABLE Scheduled Options, Menu Options, and Protocols? NO//

Enter the Device you want to print the Install messages.

You can queue the install by enter a 'Q' at the device prompt.

Enter a '^' to abort the install.

DEVICE: HOME// HOME

Install Started for PXRM*2.0*54 :

Oct 31, 2014@09:05:23

Build Distribution Date: Oct 28, 2014

Installing Routines:

Oct 31, 2014@09:05:23

Running Pre-Install Routine: PRE^PXRMP54I

DISABLE options.

DISABLE protocols.

Installing Data Dictionaries:

Oct 31, 2014@09:05:24

Installing Data:

Oct 31, 2014@09:05:24

Running Post-Install Routine: POST^PXRMP54I

ENABLE options.

ENABLE protocols.

There are 1 Reminder Exchange entries to be installed.

1. Installing Reminder Exchange entry PATCH PXRMP*2*54 EBOLA RISK TRIAGE TOOL

Updating Routine file...

Updating KIDS files...

PXRMP*2.0*54 Installed.

Oct 31, 2014@09:05:34

Not a production UCI

PXRMP*2.0*54

Install Completed

- 1 Load a Distribution
- 2 Verify Checksums in Transport Global
- 3 Print Transport Global
- 4 Compare Transport Global to Current System
- 5 Backup a Transport Global
- 6 Install Package(s)
Restart Install of Package(s)
Unload a Distribution

[\[return to table of contents\]](#)

APPENDIX B

REMINDER EXCHANGE Packing list

DESCRIPTION:

THE FOLLOWING CLINICAL REMINDER ITEMS ~~W~~FOR PACKING: REMINDER DIALOG

VA-EBOLA RISK TRIAGE\$ OBJECTS)
VA-EBOLA RISK TRIAGE TOOL

KEYWORDS:

COMPONENTS:

TIU TEMPLATE FIELD

- 1 VA-EBOLA W-P 4LINES/FL72
- 2 VA-EBOLA URL CDC AFFECTED AREAS
- 3 VA-EBOLA URL CDC ALGORITHM
- 4 VA-EBOLA URL CDC CHECKLIST

HEALTH FACTORS

- 5 SCREENING FOR EPIDEMIC DISEASE
- 6 EBOLA TRIAGE - IN-HOSP MGMT NOT REQUIRED
- 7 EBOLA TRIAGE - IN-HOSP MGMT REQUIRED
- 8 EBOLA TRIAGE - TESTING IS NOT INDICATED
- 9 EBOLA TRIAGE - TESTING IS INDICATED
- 10 EBOLA TRIAGE - EBOLA NOT SUSPECTED
- 11 EBOLA TRIAGE - EBOLA SUSPECTED
- 12 EBOLA TRIAGE - EXPOSURE PERCUTANEOUS/MUCUS
- 13 EBOLA TRIAGE - EXPOSURE PT CARE W/O PPE
- 14 EBOLA TRIAGE - EXPOSURE HOUSEHOLD CONTACT
- 15 EBOLA TRIAGE - EXPOSURE PROCESSING W/O PPE
- 16 EBOLA TRIAGE - EXPOSURE DECEASED BODY
- 17 EBOLA TRIAGE - EXPOSURE SKIN/BODY FLUIDS
- 18 EBOLA TRIAGE - NO KNOWN EXPOSURE
- 19 EBOLA TRIAGE - LOW RISK EXPOSURE
- 20 EBOLA TRIAGE - HIGH RISK EXPOSURE
- 21 EBOLA TRIAGE - FEVER/SYMPTOMS POSITIVE
- 22 EBOLA TRIAGE - FEVER/SYMPTOMS NEGATIVE
- 23 EBOLA TRIAGE - POSITIVE CONTACT HISTORY
- 24 EBOLA TRIAGE - POSITIVE TRAVEL HISTORY
- 25 EBOLA RISK TRIAGE COMPLETED

REMINDER SPONSOR

- 26 OFFICE OF PUBLIC HEALTH

REMINDER TAXONOMY

- 27 VA-EBOLA RISK TRIAGE DIAGNOSIS CODE

REMINDER TERM

- 28 VA-EBOLA RISK TRIAGE IN-HOSPITAL MANAGEMENT
- 29 VA-EBOLA RISK TRIAGE TESTING STATUS

[\[return to table of contents\]](#)

- 30 VA-EBOLA RISK TRIAGE EBOLA SUSPECTED/NOT SUSPECTED
- 31 VA-EBOLA RISK TRIAGE TYPE OF EXPOSURE
- 32 VA-EBOLA RISK TRIAGE LEVEL OF EXPOSURE
- 33 VA-EBOLA RISK TRIAGE FEVER/SYMPTOMS
- 34 VA-EBOLA RISK TRIAGE CONTACT HISTORY
- 35 VA-EBOLA RISK TRIAGE REMINDER

DEFINITION

- 36 VA-EBOLA RISK TRIAGE OBJECT LAST RATING

REMINDER DIALOG

- 37 VA-EBOLA RISK TRIAGE (3 OBJECTS)
- 38 VA-EBOLA RISK TRIAGE TOOL

HEALTH SUMMARY COMPONENT

CLINICAL REMINDERS/PC HEALTH FACTORS
SELECTED

HEALTH SUMMARY TYPE

- 39 VA-EBOLA TRIAGE LAST RATING
- 40 VA-EBOLA RISK TRIAGE (ALL HFS)
- 41 VA-EBOLA RISK TRIAGE COMPLETED

HEALTH SUMMARY OBJECTS

- 42 VA-EBOLA RISK TRIAGE LAST RATING
- 43 VA-EBOLA RISK TRIAGE (ALL HFS)
- 44 VA-EBOLA RISK TRIAGE COMPLETED

TIU DOCUMENT DEFINITION

- 45 EBOLA RISK TRIAGE LAST RATING
- 46 EBOLA RISK TRIAGE (CUMULATIVE)
- 47 EBOLA RISK TRIAGE COMPLETED

[\[return to table of contents\]](#)