

Computerized Patient Record System

V31MA COMBINED BUILD 1.0

Deployment, Installation, Back Out and Rollback Guide



November 2020

**Department of Veterans Affairs
Office of Information & Technology (OI&T)
Enterprise Program Management Office (EPMO)**

This page left intentionally blank.

Revision History

	Version	Description	Author
11/2020	0.10	Added Appendix B: Disabling PDMP Functionality	REDACTED
	0.09	Updated for V312.1	
	0.08	Updated for v311.1	
	0.07	New DST Notification	
	0.06	Added DST Notification	
	0.05	Updated for v310.1	
	0.04	Updated for v309.1	
		Inserted text that OR*3*533 patch must be installed first before any other patch	
	0.03	Updated date on Title page and in footers	
		Incorporated v308.1 updates from Developer (added Section 6.3.1 Enable Decision Support Tool (DST) and/or Consult Toolbox (CTB) Feature)	
	Rearranged TOC with Pre-Installation Steps, Installation Procedure, and Post-Installation Steps under Section 6 Installation		
7/2020	0.02	Removed incorrect information from Section 4, Pre-Installation Steps .	REDACTED
6/2020	0.01	Initial Draft version	REDACTED

Table of Contents

- 1 Computerized Patient Record System Graphical User Interface.... 1**
 - 1.1 Overview..... 1
 - 1.2 Recommended Audience 1
 - 1.3 About this Guide 1
 - 1.3.1 Description 1
 - 1.4 Document Conventions..... 1
 - 1.5 Related Documents 2
- 2 Pre-requisites2**
- 3 Reporting Issues3**
- 4 CPRS v31MA Installation Checklist3**
- 5 Software Retrieval.....3**
- 6 Installation4**
 - 6.1 Pre-Installation Steps 4
 - 6.1.1 Confirm Installation of Patch XOBW*1.0*6 4
 - 6.1.2 Backup Procedures 5
 - 6.1.3 Disable Ordering during Installation 5
 - 6.2 Installation Procedure 6
 - 6.2.1 CPRS v31MA Combined Build 1.0 Required Patches 6
 - 6.2.2 CPRS GUI v31MA COMBINED BUILD 1.0 – Host file (CPRS_V31MA_COMBINED_BUILD.KID) 6
 - 6.2.3 Methods of installation 8
 - 6.3 Post-Installation Steps 11
 - 6.3.1 Decision Support Tool (DST) and/or Consult Toolbox (CTB) Features 11
 - 6.3.2 Enable Ordering for Testers 11
 - 6.3.3 Enabling Ordering for All Users 11
 - 6.3.4 CPRS Documentation..... 12
- 7 Back-Out Procedure 12**
 - 7.1 Back-Out Strategy..... 12
 - 7.2 Back-Out Criteria 12
 - 7.3 Back-Out Risks 12
 - 7.4 Authority for Back-Out 13
 - 7.5 Back-Out Procedure 13
 - 7.6 Back-out Verification Procedure 13
- 8 Rollback Procedure 13**
- Appendix A: Web Server Post-Installation Check..... 14**

A1 Add Web Server Entry	15
Appendix B: Disabling PDMP Functionality	18

1 Computerized Patient Record System Graphical User Interface

1.1 Overview

The Computerized Patient Record System (CPRS) is a Veterans Health Information Systems and Technology Architecture (VistA) suite of application packages. CPRS enables you to enter, review, and continuously update information connected with a patient. With CPRS, you can order lab tests, medications, diets, radiology tests and procedures, record a patient's allergies or adverse reactions to medications, request and track consults, enter progress notes, diagnoses, and treatments for each encounter, and enter discharge summaries. In addition, CPRS supports clinical decision-making and enables you to review and analyze patient data.

1.2 Recommended Audience

This guide provides information specifically for Department of Veterans Affairs Medical Center (VAMC) Information Technology (IT) Operations and Services staff.

1.3 About this Guide

This installation guide provides instructions for:

- Installing application components that run on M servers at VAMC facilities
- Installing Windows executable programs on workstations, network shares, or the Citrix gateway

1.3.1 Description

This patch is part of the CPRS v31.MA updates. Below is a list of all the applications involved in this project along with their patch numbers:

<u>APPLICATION/VERSION</u>	<u>PATCH</u>
ORDER ENTRY/RESULTS REPORTING v3.0	OR*3.0*519
TEXT INTEGRATION UTILITIES v1.0	TIU*1.0*328
CONSULT/REQUEST TRACKING v3.0	GMRC*3.0*145
HEALTH SUMMARY v2.7	GMTS*2.7*134

The patches (OR*3.0*519, TIU*1.0*328, GMRC*3.0*145, and GMTS*2.7*134) are being released in the Kernel Installation and Distribution System (KIDS) multi-package build CPRS V31MA COMBINED BUILD 1.0.

1.4 Document Conventions

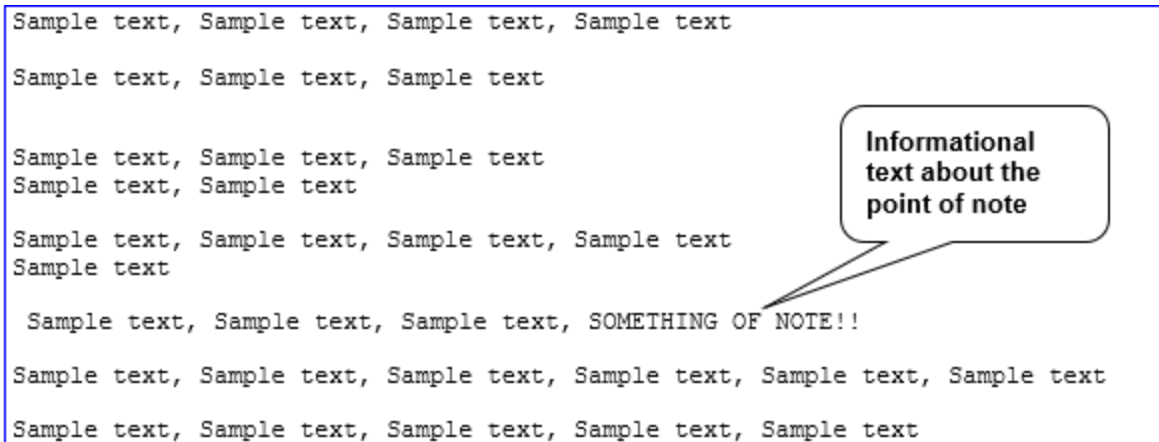
Examples of VistA “Roll and Scroll” interface actions will be shown in a box such as this:

Select OPTION NAME: XPAR EDIT PARAMETER	Edit Parameter Values
Edit Parameter Values	

Emphasis of important points may be displayed in this manner:

NOTE: This is an important point and must not be omitted.

Call-outs may be used to draw attention to part of a block of text or a table without disrupting the flow of the block or table. For example:



1.5 Related Documents

The following documents will be available on the VA Software Document Library (VDL) when the patch is released:

[CPRS on the VDL](#)

- *CPRS User Guide: GUI Version*
- *CPRS Technical Manual*
- *CPRS Technical Manual: GUI Version*
- *CPRS v31MA Release Notes*
- *CPRS v31MA Installation Guide*

2 Pre-requisites

Before beginning the processes described in this document the patches listed here must be installed:

- | | |
|--------------|--------------------------------------|
| (v) OR*3*350 | install BEFORE patch OR*3*519 |
| (v) OR*3*377 | install BEFORE patch OR*3*519 |
| (v) OR*3*415 | install BEFORE patch OR*3*519 |
| (v) OR*3*441 | install BEFORE patch OR*3*519 |
| (v) XOBW*1*6 | install BEFORE patch OR*3*519 |
| (v) OR*3*528 | install BEFORE patch OR*3*519 |
| (v) OR*3*533 | install BEFORE patch OR*3*519 |

CPRS v31 Mission Act expects a fully patched VistA system.

NOTE: You must confirm XOBW*1.0*6 has been installed, please refer to "Section 6.1.1: "[Confirm Installation of Patch XOBW*1.0*6](#)"

3 Reporting Issues

To report issues with CPRS v31MA, please call the CPRS Development Team members or use the REDACTED.

4 CPRS v31MA Installation Checklist

The following activities should be completed in order.

Table 1 Installation Checklist

No.	Item	Done
	Test/Mirror System Installation	
1.	Confirm all Pre-requisite patches have been installed in your Test/Mirror system (see Section Error! Reference source not found. , Pre-requisite Patches , Error! Reference source not found.)	
2.	Confirm the following information is available before beginning the installation: IP/Domain Name of the PDMP Server, Port, Username, password, and SSL/TLS Configuration. An encrypted email was sent out to the ITOPS installers with this information. If you did not receive it, please reach out to the CPRS implementation team (use the mail group: OIT PD CPRS Implementation Team REDACTED). NOTE: You will be prompted to enter this information during the patch installation.	
3.	Download and install the CPRS v31MA bundle of patches (CPRS_V31MA_COMBINED_BUILD.KID)	
4.	Verify that the installation in your Test/Mirror system has been successful	

5 Software Retrieval

These patches will be sent as host files. The table below will show in what form the patch will be distributed. The necessary files are:

Table 1 CPRS v31MA files

CPRS Version files to be downloaded	File Contents / Supported Functionality
CPRS_V31MA_COMBINED_BUILD.KID	Required patches for the CPRS v31MA Release
OR_30_519.ZIP	CPRSCHART.EXE

6 Installation

This section gives instructions for installing CPRS v31MA. Sites should disable ordering, install the patches, distribute the GUI, re-enable ordering for testers, re-enable ordering for all users.

6.1 Pre-Installation Steps

Before this installation proceeds, the steps below need be done by Information Technology Operations and Support (ITOPS) and other groups. Once these set up items are completed, installation can proceed.

6.1.1 Confirm Installation of Patch XOBW*1.0*6

Confirm that patch XOBW*1.0*6 was installed and all of the instructions for setup have been completed. That patch had instructions for creating a new SSL/TLS configuration, “encrypt_only_tlsv12,” on both front-end server nodes and database server nodes.

To perform this check you will need to:

- Coordinate with your site’s respective system administration group (e.g. Region Operation Center) to receive assistance in performing the SSL Configuration verification check.
- Ask the system administrator to check that the SSL/TLS configuration has been installed in all nodes. The system administrator (with a **Programmer Support** account) will need one of the following roles (e.g. greater than %Developer role) to perform the check:
 - %All
 - %Manager

Example of determining Roles currently held:

```
>W $ROLES
```

```
>%All,%Developer
```

To check if the “encrypt_only_tlsv12” SSL Configuration exists on a node, enter the following code at the programmer prompt:

```
>D CHCKEXST^XOBWP004("encrypt_only_tlsv12")
```

- If you get something similar to below displayed on all nodes, where Protocols is equal to ‘16,’ you are good to go and can proceed with installing patch CPRS V31MA COMBINED BUILD 1.0:

```
>D CHCKEXST^XOBWP004("encrypt_only_tlsv12")
```

```

Configuration Values
CAFile          :
CAPath         :
CRLFile        :
CertificateFile :
CipherList     : ALL:!aNULL:!eNULL:!EXP:!SSLv2
Description    : XOBW*1.0*6
Enabled        : 1
PrivateKeyFile :
PrivateKeyPassword :
PrivateKeyType : 2
Protocols      : 16
Type           : 0
VerifyDepth   : 9
VerifyPeer    : 0

```

- If you get the following, you will need to go back to the XOBW*1.0*6 patch instructions and complete the setup before proceeding with the installation of patch CPRS V31MA COMBINED BUILD 1.0:

```

>D CHCKEXST^XOBWP004("encrypt_only_tls12")

>>>> 'encrypt_only_tls12' SSL Config doesn't exist.

```

- If you get an error resembling the following, you do not have sufficient roles assigned and you will need to contact your Cache System Administrator with a sufficient role to perform this check:

```

>D CHCKEXST^XOBWP004("encrypt_only_tls12")

.S $NAMESPACE="%SYS" ;Change namespace, revert back upon "Q"
^
<PROTECT>EXISTS+6^XOBWP004 */opt/cachesys/mgr/

```

6.1.2 Backup Procedures

Refer to [Step b](#). under Section 6.2.2 "CPRS GUI v31MA COMBINED BUILD 1.0 – Host file (CPRS_V31MA_COMBINED_BUILD.KID)"

6.1.3 Disable Ordering during Installation

It is best to ensure that users cannot enter orders while the CPRS software is being updated. To help with this, there is a parameter that disables ordering in CPRS. Disabling ordering should be done before installation begins.

Ordering can then be enabled for testing immediately after installation. The following example shows how to disable ordering for the SYSTEM level.

```

CHOOSE 1-3: 2  ORWOR DISABLE ORDERING  Disable Ordering in GUI

ORWOR DISABLE ORDERING may be set for the following:

```

```

2   User          USR    [choose from NEW PERSON]
5   System        SYS    [ONEBCE.DEVSLC.FO-SLC.MED.VA.GOV]
10  Package       PKG    [ORDER ENTRY/RESULTS REPORTING]

Enter selection: 5   System   ONEBCE.DEVSLC.FO-SLC.MED.VA.GOV

Setting ORWOR DISABLE ORDERING for System: ONEBCE.DEVSLC.FO-SLC.MED.VA.GOV
Disable Ordering: YES

```

6.2 Installation Procedure

6.2.1 CPRS v31MA Combined Build 1.0 Required Patches

The following list of patches are part of CPRS v31MA COMBINED BUILD 1.0. There is no need to install them individually.

```

OR*3.0*519
TIU*1.0*328
GMRC*3.0*145
GMTS*2.7*134

```

6.2.2 CPRS GUI v31MA COMBINED BUILD 1.0 – Host file (CPRS_V31MA_COMBINED_BUILD.KID)

All patches listed in section 6.2.1 are part of a single host file for CPRS v31MA.

This patch may be installed with users on the system although it is recommended that it be installed during non-peak hours to minimize potential disruption to users. This patch should take less than 5 minutes to install.

NOTE: Confirm the following information is available before beginning the installation: IP/Domain Name of the PDMP Server, Port, Username, password, and SSL/TLS Configuration. You will be prompted to enter this information during the patch installation. An encrypted email was sent out to the ITOPS installers with this information. If you did not receive it, please reach out to the CPRS implementation team (use the mail group: OIT PD CPRS Implementation Team REDACTED).

NOTE: Do not queue the install.

1. Use the Load a Distribution option contained on the Kernel Installation and Distribution System Menu to load the Host file.

- a. When prompted to "Enter a Host File:" enter

```
/srv/vista/patches/SOFTWARE/CPRS_V31MA_COMBINED_BUILD.KID
```

2. From the Kernel Installation and Distribution System Menu, select the Installation Menu. From this menu, you should run the following options. When prompted for the INSTALL NAME enter CPRS V31MA COMBINED BUILD 1.0.

NOTE: Using <spacebar><enter> will not bring up a Multi-Package build even if it was loaded immediately before this step. It will only bring up the last patch in the build:

- a. Select the Verify Checksums in Transport Global option to confirm the integrity of the routines that are in the transport global.

- b. Select the Backup a Transport Global option to create a backup message of any routines exported with this patch. It will not backup any other changes such as DDs or templates.
- c. You may also elect to use the following options:
 - i. Print Transport Global - This option will allow you to view the components of the KIDS build.
 - ii. Compare Transport Global to Current System - This option will allow you to view all changes that will be made when this patch is installed. It compares all of the components of this patch, such as routines, DDs, templates, etc.
- d. Select the Install Package(s) option and choose the patch to install:
 - i. If prompted 'Want KIDS to Rebuild Menu Trees Upon Completion of Install? NO//', answer NO.

ALERT: Do NOT use the Production Account Settings in your test account as this may send test patient information to the PDMP production system, and similarly, do not use the Test Account settings in the production account as this may send real patient information to the PDMP test system.

NOTE: If any of the responses related to the PDMP questions are accidentally mistyped, or by mistake skipped, refer to "[Appendix A: Web Server Post-Installation Check](#)" on how to rectify it.

- ii. When prompted 'Enter the IP address or domain name of the PDMP server:' answer with the IP/Domain name you were provided.
- iii. When prompted 'Enter the port number for the PDMP server: (1-99999):', answer with the port you were provided with.
- iv. When prompted 'Enter the username for the PDMP server:' answer with the username you were provided with.
- v. When prompted 'Enter the password for the PDMP server:' answer with the password you were provided with.
- vi. When prompted 'Enter the SSL/TLS Configuration:' answer with "encrypt_only_tlsv12" (without quotes).
- vii. When prompted 'When rebuilding the Health Summary Adhoc Report, do you want to include disabled components?' answer either YES or NO as appropriate for your site.

NOTE: If your site has any components that are temporarily disabled (rather than permanently disabled) and you plan to enable them in the future, you may want to answer YES at this prompt. Keep in mind that you can rebuild the Adhoc Report at any time in the future, at which point you are prompted again whether to include disabled components.

- viii. When prompted 'Want KIDS to INHIBIT LOGONs during the install? NO//', answer NO.
- ix. When prompted 'Want to DISABLE Scheduled Options, Menu Options, and Protocols? NO//', answer NO.

- x. When prompted 'Delay Install (Minutes): (0 - 60): 0//', answer 0.

6.2.3 Methods of installation

Sites have used primarily four methods to distribute the application. Each site will need to decide how they will install. This decision is typically made by the ITOPS and Client Desktop teams.

- **Network (shared) installation:**

This method is typically the simplest to maintain, providing the local network infrastructure is robust enough to handle the additional traffic caused by users running the CPRS v31MA (CPRSChart.exe) across the network.

The GUI executable (CPRSChart.exe) and help file system are copied to a network shared location. Users are provided with a desktop shortcut to run CPRS v31MA directly from the network shared drive. The necessary command line parameters (Vista server address or name and RPC Broker Port number) are entered in the “Target” field of the shortcut properties.

At the time of a CPRS version update the copy of CPRSChart.exe and the help file system are replaced, on the network share, with the new version.

For the DLLs, each site will coordinate with ITOPS to determine where the DLLs will be placed. The DLLs must be available on the local search path, and all previous versions of the DLLs must be removed. For example, some sites may choose to have the DLLs in the same network share as the CPRS executable itself. Others might choose to put them in the Program Files\Vista\Shared Files directory. Sites will need to choose where to put them.

Any users requiring access to another site's CPRS system can be given an alternate desktop shortcut with command line parameters appropriate to the intended target Vista system.

If a user requires access to an older or newer version of CPRSChart.exe (e.g. for testing purposes), a different version of CPRSChart.exe can be placed in a separate network location and the user can be supplied with an appropriate alternate shortcut (different Target path and different Vista server command line parameters).

- **Citrix installation:**

The GUI executable (CPRSChart.exe), help file system, and the DLLs are installed and run from a remote workstation, and the user views the remote workstation's screen on their local workstation.

For the local site users, this method is on a similar level to the Network (shared) installation above. The users' workstations require only an appropriate shortcut (and the necessary Citrix Access Group (CAG) infrastructure).

NOTE: For issues with CAG, please contact the local or national help desk.

For the Citrix Farm administrator, this method involves installations on the host in a similar manner to either the Gold Path or the Direct Access methods outlined below.

- **Gold Path installation:**

This is where the new executable is placed in a common shared location (called a gold path) and updated when the CPRS GUI is first accessed from the local workstation. This method is handled through desktop enterprise services.

- **Local workstation installation:**

This is an installation method where the GUI executable (CPRSChart.exe), help file system, and DLLs are installed on and run from the user's local workstation. This method of installation initially requires the distribution and installation of a Microsoft Software Installation (MSI) file to each user's workstation, typically accomplished via SCCM. A National package, (CPRS 1.31.311.1) has been prepared and made available to Regional COR Client Technologies leadership.

- **Manual install:**

This is a situation which is used primarily for advanced users and at testing locations. This method is somewhat changed from that used previously for Windows XP workstations. For more detail please refer to section **6.2.3.1 Manual Installation** below.

6.2.3.1 Manual Installation

This method is used for users who wish to have a production instance and a non-production instance running on the same machine. An example would be users who are testing this software or need to have access to a pre-production (mirror) Vista instance.

1. Locate the ZIP file for OR*3*519 and unzip the file.
2. Copy the contents of the zip archive (the GUI and the help file system) to a test directory, for example, C:\cprstest. A new directory may need to be created.

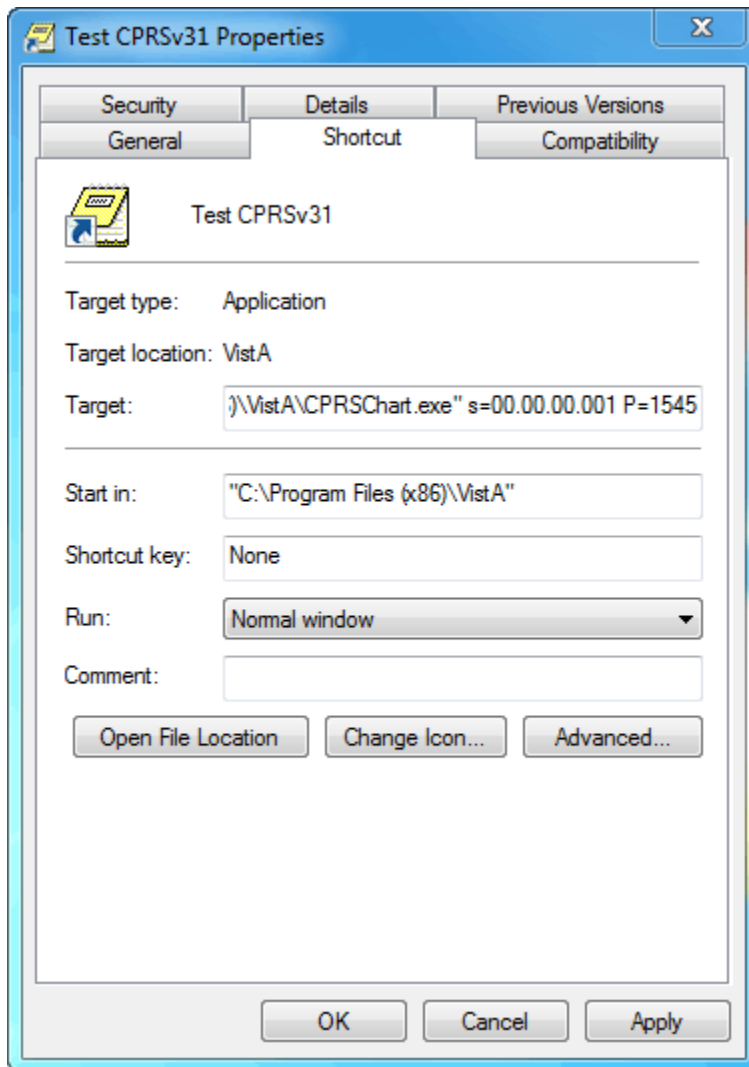
NOTE: Administrator rights are required for the PC used to complete this step.

3. Create a Shortcut and name it “Test CPRSv31MA.” This is to give the user another visual cue that this is not the normal CPRS icon.



4. Copy the borlandmm.dll file into the same directory as cprchart.exe (for example, c:\cprstest). This file should be in the same directory as the CPRSChart.exe for CPRS v31MA.
5. Determine the DNS server name or IP address for the appropriate Vista server.
6. Determine the Broker RPC port for the Vista account.

7. Enter IP and RPC port in the Target field of the Shortcut properties (or use ServerList.exe).



Example of what the shortcut properties dialog might look like.

The server and port number shown above are not real and are for example only.

6.3 Post-Installation Steps

6.3.1 Decision Support Tool (DST) and/or Consult Toolbox (CTB) Features

The integrated DST/CTB features in this version of CPRS GUI are installed as **disabled/off**. At the time of this writing, it has not been determined exactly when these features should be enabled in production systems. At some point in the future, VAMCs can expect to receive information about when and how to enable the integrated DST/CTB features of CPRS GUI.

6.3.2 Enable Ordering for Testers

Once CPRS v31MA COMBINED BUILD 1.0 is installed, sites can enable testing for the specific users that will be testing before all users are allowed on the system.

Below is an example of how to change the parameter at the USER level.

```
ORWOR DISABLE ORDERING may be set for the following:

    2  User          USR      [choose from NEW PERSON]
    5  System        SYS      [ONEBCE.DEVSLC.FO-SLC.MED.VA.GOV]
   10  Package       PKG      [ORDER ENTRY/RESULTS REPORTING]

Enter selection: 2  User      NEW PERSON
Select NEW PERSON NAME: CPRSPROVIDER,TWO  CPRSPROVIDER,TWO      TC      PROVIDER

----- Setting ORWOR DISABLE ORDERING for User: CPRSPROVIDER,TWO -----
Disable Ordering: NO
```

NOTE: Enable all users that will be testing before all users have ordering enabled.

6.3.3 Enabling Ordering for All Users

When testing is complete and the site is comfortable, the site should enable ordering for all users as shown below.

```
ORWOR DISABLE ORDERING may be set for the following:

    2  User          USR      [choose from NEW PERSON]
    5  System        SYS      [ONEBCE.DEVSLC.FO-SLC.MED.VA.GOV]
   10  Package       PKG      [ORDER ENTRY/RESULTS REPORTING]

Enter selection: 5  System    ONEBCE.DEVSLC.FO-SLC.MED.VA.GOV

Setting ORWOR DISABLE ORDERING for System: ONEBCE.DEVSLC.FO-SLC.MED.VA.GOV
Disable Ordering: YES// @ ...deleted

ORWOR DISABLE ORDERING may be set for the following:

    2  User          USR      [choose from NEW PERSON]
    5  System        SYS      [ONEBCE.DEVSLC.FO-SLC.MED.VA.GOV]
   10  Package       PKG      [ORDER ENTRY/RESULTS REPORTING]
```


6.3.4 CPRS Documentation

Due to standardized software document changes and VDL updates, the CPRSv31MissionAct documentation will be released and stored with the software on the network share site for 45 day compliance period. The documents will then be loaded and stored on the VDL. The documents and manuals may be downloaded from <https://www.va.gov/vdl/section.asp?secid=1>

File Name	Document
CPRSGUIUM.PDF	CPRS User Guide: GUI Version
CPRSLMTM.PDF	CPRS Technical Manual
CPRSGUITM.PDF	CPRS Technical Manual: GUI Version
OR_30_519_RN.PDF	CPRS GUI v31 MA (Patch OR*3.0*519)
OR_30_519_DIBR.PDF	CPRS GUI v31 MA Installation Guide

7 Back-Out Procedure

In the event of a major issue with the patch, the Area Manager may make the decision to back-out the patch. However, this decision should include both Health Product Support and the CPRS development team

7.1 Back-Out Strategy

To back out the changes associated with CPRS V31MA COMBINED BUILD 1.0, personnel would install OR_3_508_V31MA_V311_BACKOUT.KID to back out all of the patches installed with CPRS V31MA COMBINED BUILD 1.0. For assistance, please contact the CPRS implementation team (use the mail group: OIT PD CPRS Implementation Team REDACTED).

7.2 Back-Out Criteria

These patches should be backed out only if they cause a catastrophic failure of the system.

7.3 Back-Out Risks

Backing out the patches involved with CPRS v31MA COMBINED BUILD 1.0 (Patch # OR*3.0*519) would affect many different parts of CPRS and VistA. For more information about all the changes in CPRS v31MA COMBINED BUILD 1.0, please reference the *CPRS v31MA Release Notes (Patch # OR*3.0*519)*, which can be obtained from the [VA Software Document Library](#). However, installing the OR*3.0*508 patch should return CPRS and VistA to the state it was in prior to the installation of CPRS v31MA COMBINED BUILD 1.0 (Patch # OR*3.0*519).

7.4 Authority for Back-Out

The Area Manager has the ultimate responsibility for the decision to back out the two patches and revert to a previous version. The Area Manager should consult with the medical center clinical staff, CPRS Development team, and Health Product Support Clinical personnel before backing out the patches.

7.5 Back-Out Procedure

To back out the features with CPRS v31MA COMBINED BUILD 1.0, a back out patch was created which should uninstall all of the patches installed with CPRS v31MA COMBINED BUILD 1.0 and return the system to a previous state. To back out CPRS v31MA COMBINED BUILD 1.0 (Patch # OR*3.0*519), follow these steps:

1. Load and Install the OR_3_508.KID host file
2. If any files were backed up in Step 6, restore them now.
3. Re-install released patch OR*3.0*528 SEQ#452
4. Remove the CPRS v31MA executable (cprchart.exe) and redistribute the CPRS v31b executable.
5. Check the desktop icons to see if any adjustments need to be made.

7.6 Back-out Verification Procedure

To verify that the rollback has been successful, check that the option is back at 1.31.266.2. Use VA FileMan to check that MENU TEXT field of the OR CPRS GUI CHART option in the OPTION file (#19) has been reset to 1.31.266.2.

8 Rollback Procedure

No rollback is required for this installation.

Appendix A: Web Server Post-Installation Check

After successfully installing patch OR*3.0*519, a user can validate that the post-install routine added the PDMP Web Server and Web Service entries correctly. If needed, edits to the server domain name, SSL Port, Username, Password, or SSL Configuration can be made here.

1. Run option Web Server Manager [XOBW WEB SERVER MANAGER].
2. There should be a Web Server “PDMP SERVER” (in production) or “PDMP TEST SERVER” (in test). If not, please see instructions in REDACTED on how to create one.
3. Choose action “Edit Server” (ES).
4. When prompted, “Select Web Server:” answer with the ID for “PDMP SERVER” or “PDMP TEST SERVER.”
5. Enter through the prompts. If needed, you can edit the responses.

```
Web Server Manager Jun 16, 2020@11:01:35 Page: 1 of 1
HWSC Web Server Manager
Version: 1.0 Build: 9

ID Web Server Name IP Address or Domain Name:Port
1 *PDMP SERVER xxxxxxxxxxxx.xx.xxx:xxx (SSL)

Legend: *Enabled
AS Add Server TS (Test Server)
ES Edit Server WS Web Service Manager
DS Delete Server CK Check Web Service Availability
EP Expand Entry LK Lookup Key Manager
Select Action:Quit// ES Edit Server
Select Web Server: (1-12): 1
NAME: PDMP SERVER//
SERVER: xxxxxxxxxxxx.xx.xxx Replace
PORT: 80// (← This can be ignored, as we are only using the SSL PORT below)
DEFAULT HTTP TIMEOUT: 180//
STATUS: ENABLED//

Security Credentials
=====
LOGIN REQUIRED: YES//
USERNAME: USERNAME//
Want to edit PASSWORD (Y/N):

SSL Setup
=====
SSL ENABLED: TRUE//
SSL CONFIGURATION: encrypt_only_tlsv12//
SSL PORT: 443//

Authorize Web Services
=====
Select WEB SERVICE: PDMP WEB SERVICE//
WEB SERVICE: PDMP WEB SERVICE//
STATUS: ENABLED//
Select WEB SERVICE:
```

A1 Add Web Server Entry

If the post-install was not be able to create the “PDMP SERVER” (in production) or “PDMP TEST SERVER” (in test) Web Server entry (for example, if some of the install questions related to these entries were not answered during the installation), the following instructions will explain how to manually create them:

1. Run option Web Server Manager [XOBW WEB SERVER MANAGER].
2. Choose action “Web Service Manager” (WS).
3. Choose action “Add Service” (AS).
4. When prompted, “Select WEB SERVICE NAME,” answer with “PDMP WEB SERVICE”
5. When prompted, “Are you adding 'PDMP WEB SERVICE' as a new WEB SERVICE (the 14TH)? No//” answer with “YES”
6. When prompted, “NAME: PDMP WEB SERVICE//” hit [Enter] to take the default
7. When prompted, “DATE REGISTERED:” answer with “NOW”
8. When prompted, “TYPE:” answer with “REST”
9. When prompted, “CONTEXT ROOT:” answer with “csp/resthsb/pdmp/PDMP.API.REST”
10. When prompted, “AVAILABILITY RESOURCE” don’t enter a response, and hit [Enter].

```
Web Service Manager Jun 16, 2020@11:17:28 Page: 1 of 1
HWSM Web Service Manager
Version: 1.0 Build: 9

ID Web Service Name Type URL Context Root
1 TEST WEB SERVICE REST /TEST/

Enter ?? for more actions
AS Add Service
ES Edit Service
DS Delete Service
EP Expand Entry
Select Action:Quit// AD Add Service

Select WEB SERVICE NAME: PDMP WEB SERVICE
Are you adding 'PDMP WEB SERVICE' as a new WEB SERVICE (the 14TH)? No//
Y (Yes)
NAME: PDMP WEB SERVICE//
DATE REGISTERED: NOW (JUN 16, 2020@11:18:06)
TYPE: REST
CONTEXT ROOT: csp/resthsb/pdmp/PDMP.API.REST
AVAILABILITY RESOURCE:
```

11. When prompted, “Select Action:” answer with “Quit.” This should take you back to the Web Server Manager.
12. Choose action “Add Server” (AS).

13. When prompted, “Select WEB SERVER NAME:” answer with “PDMP SERVER” (in the test account, answer with “PDMP TEST SERVER”)
14. When prompted, “Are you adding 'PDMP SERVER' as a new WEB SERVER (the 13TH)? No//” answer with “YES”
15. When prompted, “NAME: PDMP SERVER//” hit [Enter] to take the default.

ALERT: Do NOT use the Production Account Settings in your test account as this may send test patient information to the PDMP production system.

16. When prompted, “SERVER:” answer with the domain name of the PDMP server.
17. When prompted, “PORT: 80//” hit [Enter] to take the default. (We do not use this port. We only use the SSL Port below).
18. When prompted, “DEFAULT HTTP TIMEOUT: 30//” answer with “180”
19. When prompted, “STATUS:” answer with “ENABLED”
20. When prompted, “LOGIN REQUIRED:” answer with “YES”
21. When prompted, “USERNAME:” answer with the username for the PDMP server.
22. When prompted, “Want to edit PASSWORD (Y/N):” answer with “Y”
23. When prompted, “Enter a new PASSWORD:” answer with the password for the PDMP server.
24. When prompted, “Please re-type the new password to show that I have it right:” re-type the password.
25. When prompted, “SSL ENABLED: FALSE//” answer with “TRUE”
26. When prompted, “SSL CONFIGURATION:” answer with “encrypt_only_tlsv12”
27. When prompted, “SSL PORT” answer with the PDMP port.
28. When prompted, “Select WEB SERVICE:” answer with “PDMP WEB SERVICE”
29. When prompted, “Are you adding 'PDMP WEB SERVICE' as a new AUTHORIZED WEB SERVICES (the 1ST for this WEB SERVER)? No//” answer with “YES”
30. When prompted, “STATUS:” answer with “ENABLED”
31. When prompted, “Select WEB SERVICE:” don’t enter a response, and hit [Enter].

```

Web Server Manager                               Jun 16, 2020@11:13:48                               Page: 1 of 1
                                     HWSC Web Server Manager
                                     Version: 1.0           Build: 9

ID      Web Server Name                IP Address or Domain Name:Port
-----
1       *TEST SERVER                       xxxxxxxxxxxx.xx.xxx:xxx (SSL)

Legend: *Enabled
AS      Add Server                        TS      (Test Server)
ES      Edit Server                          WS      Web Service Manager
DS      Delete Server                       CK      Check Web Service Availability
EP      Expand Entry                        LK      Lookup Key Manager
Select Action:Quit// AS      Add Server

```

```
Select WEB SERVER NAME: PDMP SERVER (In the Test account this should be PDMP
TEST SERVER)
  Are you adding 'PDMP SERVER' as a new WEB SERVER (the 13TH)? No// Y (Yes)
NAME: PDMP SERVER//
SERVER: xxxxxxxxxxxx.xx.xxx
PORT: 80// (This can be ignored, as we are only using the SSL PORT below)
DEFAULT HTTP TIMEOUT: 30// 180
STATUS: ENABLED

Security Credentials
=====
LOGIN REQUIRED: YES
USERNAME: USERNAME
Want to edit PASSWORD (Y/N): Y

Enter a new PASSWORD: *****

Please re-type the new password to show that I have it right: *****

Ok, password has been changed!

SSL Setup
=====
SSL ENABLED: FALSE// TRUE
SSL CONFIGURATION: encrypt_only_tlsv12
SSL PORT: xxx

Authorize Web Services
=====
Select WEB SERVICE: PDMP WEB SERVICE
  Are you adding 'PDMP WEB SERVICE' as
    a new AUTHORIZED WEB SERVICES (the 1ST for this WEB SERVER)? No// Y (Yes)
  STATUS: ENABLED
Select WEB SERVICE:
```

Appendix B: Disabling PDMP Functionality

The PDMP feature is installed as **enabled/on**. If it is determined that a site or division needs to disable or hide the PDMP functionality, the following two parameters can be used.

1. The OR PDMP TURN ON parameter can be used to disable the PDMP functionality entirely. Setting it to disabled/off, will remove the PDMP functionality entirely from CPRS (it will remove the PDMP Query button from the ribbon bar and the Tools menu). It can be configured at the System and Division levels.
2. The OR PDMP SHOW BUTTON can be used if a site wants to leave the PDMP functionality enabled but hidden. Setting it to RESULTS ONLY will remove the PDMP Query button from the ribbon bar, but leave it on the Tools Menu. It can be configured at the System, Division, or User levels.

Example Disabling PDMP at the System Level

```
Select CPRS Configuration (IRM) Option: XX  General Parameter Tools

LV      List Values for a Selected Parameter
LE      List Values for a Selected Entity
LP      List Values for a Selected Package
LT      List Values for a Selected Template
EP      Edit Parameter Values
ET      Edit Parameter Values with Template
EK      Edit Parameter Definition Keyword

Select General Parameter Tools Option: EP  Edit Parameter Values
      --- Edit Parameter Values ---

Select PARAMETER DEFINITION NAME: OR PDMP TURN ON  PDMP functionality turn on

OR PDMP TURN ON may be set for the following:

      3  Division      DIV      [choose from INSTITUTION]
      6  System        SYS      [EXAMPLE.TEST.VA.GOV]

Enter selection: 6  System  EXAMPLE.TEST.VA.GOV

----- Setting OR PDMP TURN ON  for System: EXAMPLE.TEST.VA.GOV -----
Value: NO
```

Example Removing the PDMP Query Button From the Ribbon Bar

```
Select CPRS Configuration (IRM) Option: XX  General Parameter Tools

LV      List Values for a Selected Parameter
LE      List Values for a Selected Entity
LP      List Values for a Selected Package
LT      List Values for a Selected Template
EP      Edit Parameter Values
ET      Edit Parameter Values with Template
EK      Edit Parameter Definition Keyword

Select General Parameter Tools Option: EP  Edit Parameter Values
      --- Edit Parameter Values ---
```

Select PARAMETER DEFINITION NAME: OR PDMP SHOW BUTTON PDMP SHOW BUTTON

OR PDMP SHOW BUTTON may be set for the following:

1	User	USR	[choose from NEW PERSON]
5	Division	DIV	[choose from INSTITUTION]
7	System	SYS	[EXAMPLE.TEST.VA.GOV]

Enter selection: 7 System EXAMPLE.TEST.VA.GOV

----- Setting OR PDMP SHOW BUTTON for System: EXAMPLE.TEST.VA.GOV -----
Value: RESULTS ONLY