

Computerized Patient Record System Graphical User Interface (CPRS GUI)

**Installation Guide
Version CPRS 30.b**



April 2016

**Department of Veterans Affairs
Office of Information & Technology (OI&T)
Product Development (PD)**

This page left intentionally blank.

Table of Contents

1	Computerized Patient Record System Graphical User Interface....	1
1.1	Overview.....	1
1.2	Recommended Audience.....	1
1.3	About this Guide.....	1
1.4	Document Conventions.....	1
1.5	Related Documents.....	2
2	Pre-requisites.....	2
2.1	Pre-requisite Patches.....	3
3	Software Retrieval.....	4
4	CPRS v30.b Test System Installation Checklist.....	6
5	Installation Components.....	9
5.1	Additional Required Patches.....	9
5.1.1	TIU*1*268 in Test.....	10
5.1.2	GMPL*2*47 in Test.....	11
5.1.3	GMPL*2*45 in Test.....	14
5.1.4	PSJ*5*307 in Test.....	15
5.1.5	OR*3*350 in Test.....	16
5.1.6	GMRV*5*28 in Test.....	17
5.1.7	YS*5.01*116 in Test.....	18
5.1.8	XU*8*642 in Test.....	19
5.1.9	GMRC*3.0*81 in Test.....	20
5.1.10	GMTS*2.7*112 in Test.....	21
5.1.11	OR*3.0*424 in Test.....	22
5.2	ZIP File (OR_30_350.zip).....	23
5.3	GMV_VitalsViewEnter.DLL.....	24
5.3.1	Manual Installation.....	24
5.3.2	MSP Installation.....	25
5.4	YS_MHA_A_XE3.DLL.....	26
5.4.1	Manual Installation.....	26
5.4.2	MSP Installation.....	26
5.5	CPRS GUI Executable Methods of Installation.....	26
5.5.1	Network (Shared) Installation.....	26
5.5.2	Citrix installation.....	27
5.5.3	Gold Path installation.....	27
5.5.4	Direct Access to a Local Copy of CPRSChart.exe (bypassing the loader) 28	28

5.5.5	Manual installation.....	28
5.6	Order Com DLL installation	31
5.6.1	Manual Installation.....	31
5.7	ePCSDDataEntryForPrescriber Installation	31
5.7.1	Manual Installation.....	31
5.8	CPRS Documentation.....	31
6	Post Install Instructions	32
6.1	New Order Dialogs.....	32
6.2	ORWOR CATEGORY SEQUENCE Parameters	32
6.3	YS MHA_A DLL NAME Parameter	34
6.4	New Reports on Reports Tab.....	35
6.5	OR REPORT DATE SELECT TYPE Parameter	35
6.6	Update for Dragon Naturally Speaking	35
6.7	Consults Setup.....	35
6.7.1	Parameter Update	35
6.7.2	Input Template Change	36
6.7.3	Local Data Objects Based on EARLIEST DATE	36
6.8	OR MOB DLL VERSION parameter.....	36
6.9	One-Step Clinic Admin Setup Needed	37
6.10	CPRS and MED Fix	37
7	CPRS v30 Production System Installation Checklist	37
7.1	Additional Required Patches	40
7.1.1	TIU*1*268 in Production	40
7.1.2	GMPL*2*47 in Production.....	41
7.1.3	GMPL*2*45 in Production.....	44
7.1.4	PSJ*5*307 in Production	45
7.1.5	OR*3*350 in Production.....	46
7.1.6	GMRV*5*28 in Production	47
7.1.7	YS*5.01*116 in Production	48
7.1.8	XU*8*642 in Production	49
7.1.9	GMRC*3.0*81 in Production	50
7.1.10	GMTS*2.7*112 in Production.....	51
7.1.11	OR*3.0*424 in Production.....	52
7.2	ZIP File (OR_30_350.zip) in Production	53
7.3	GMV_VitalsViewEnter.dll.....	54
7.3.1	Manual Installation.....	54
7.3.2	MSP Installation	54
7.4	YS_MHA_A_XE3.DLL.....	55

7.4.1	Manual Installation.....	55
7.4.2	MSP Installation	55
7.5	CPRS GUI Executable Methods of installation.....	55
7.5.1	Network (Shared) Installation	55
7.5.2	Citrix installation.....	56
7.5.3	Gold Path installation	56
7.5.4	Direct Access to a Local Copy of CPRSChart.exe (bypassing the loader) 57	
7.5.5	Manual installation.....	58
7.6	Order Com DLL installation	60
7.6.1	Manual Installation.....	60
7.7	ePCSDDataEntryForPrescriber Installation	60
7.7.1	Manual Installation.....	60
7.8	CPRS Documentation.....	60
8	Post Install Instructions	61
8.1	New Order Dialogs.....	61
8.2	ORWOR CATEGORY SEQUENCE Parameters	61
8.3	YS MHA_A DLL NAME Parameter	63
8.4	New Reports on Reports Tab.....	63
8.5	OR REPORT DATE SELECT TYPE Parameter	64
8.6	Update for Dragon Dictation Software	64
8.7	Consults Setup.....	64
8.7.1	Parameter Update	64
8.7.2	Input Template Change	65
8.7.3	Local Data Objects Based on EARLIEST DATE	65
8.8	OR MOB DLL VERSION parameter.....	65
8.9	One-Step Clinic Admin Setup Needed	66
8.10	CPRS and MED Fix	66
	Appendices	67
A.	CPRS v30 M patches—Software Installation Samples	67
1	TIU*1*268 Install Capture	67
2	GMPL*2.0*47 Install Capture	69
3	GMPL*2.0*45 Install Capture.....	70
4	PSJ*5*307 Install Capture	71
5	OR*3*350 Install Capture.....	72
6	GMRV*5*28 Install Capture	76
7	YS*5.01*116 Install Capture	78
8	XU*8*642 Install Capture	80

9	GMRC*3.0*81 Install Capture	82
10	GMTS*2.7*112 Install Capture.....	83
11	OR*3.0*424 Install Capture.....	83

This page purposely left blank.

1 Computerized Patient Record System Graphical User Interface

1.1 Overview

The Computerized Patient Record System (CPRS) Graphical User Interface (GUI) is a Veterans Health Information Systems and Technology Architecture (VistA) computer application. CPRS enables you to enter, review, and continuously update information connected with a patient. With CPRS, you can order lab tests, medications, diets, radiology tests and procedures, record a patient’s allergies or adverse reactions to medications, request and track consults, enter progress notes, diagnoses, and treatments for each encounter, and enter discharge summaries. In addition, CPRS supports clinical decision-making and enables you to review and analyze patient data.

This installation guide deals specifically with the installation of CPRS GUI v30.B (patch OR*3.0*350) and its associated patches and Windows application. CPRS GUI v30.B addresses patient safety enhancements related to the display of Lab Test Status, Clinic Orders, Supply Orders, as well as 508 modifications, Remedy tickets and other patient safety corrections.

1.2 Recommended Audience

This guide provides information specifically for Department of Veterans Affairs Medical Center (VAMC) Information Resource Management (IRM) staff.

1.3 About this Guide

This installation guide provides instructions for:

- Installing application components that run on M servers at VAMC facilities
- Installing Windows executable programs on workstations or application servers at VAMC facilities
- Performing post-installation tasks—including configuration tasks—that require knowledge of the underlying VistA system

1.4 Document Conventions

Examples of VistA “Roll and Scroll” interface actions will be shown in a box such as this:

```
Select OPTION NAME: XPAR EDIT PARAMETER          Edit Parameter Values
Edit Parameter Values
```

Emphasis of important points may be displayed in this manner:

NOTE: *This is an important point and must not be omitted.*

Call-outs may be used to draw attention to part of a block of text or a table without disrupting the flow of the block or table. For example:

The diagram illustrates a call-out box used to highlight a specific point of interest within a larger block of text. The call-out box is a rounded rectangle with a black border and a white background, containing the text "Informational text about the point of note". A black line with a triangular arrowhead points from the bottom-left corner of the call-out box to the text "SOMETHING OF NOTE!!" in the sixth line of the text block. The text block itself is enclosed in a blue border and contains ten lines of sample text:

```
Sample text, Sample text, Sample text, Sample text
Sample text, Sample text, Sample text
Sample text, Sample text, Sample text
Sample text, Sample text, Sample text
Sample text, Sample text
Sample text, Sample text, Sample text, Sample text
Sample text
Sample text, Sample text, Sample text, SOMETHING OF NOTE!!
Sample text, Sample text, Sample text, Sample text, Sample text, Sample text
Sample text, Sample text, Sample text, Sample text, Sample text
```

1.5 Related Documents

The following documents, in addition to this document, will be available on the VA Software Document Library (VDL) when the patch is ready for release:

Please see section 5.8, CPRS Documentation.

[CPRS on the VDL](#)

2 Pre-requisites

Before beginning the processes described in this document the tasks outlined in this section must be completed.

1. **Read through this entire document.** Each patch may have tasks that must be accomplished before the patch is installed and may have tasks for after installation as well. Reading through the instructions will also help each site know the individuals with whom they will need to coordinate.
2. **Coordinate with needed staff.** You may need some or all of the following staff. If you are not sure, now is the time to verify who will be responsible for which tasks and when they will be needed.
 - local IRM personnel or Region IT representative for server-side patch installations
 - personnel to distribute the CPRSChart.exe Graphical User Interface (GUI) software either to a server (if you run it from there), or to individual workstations
 - If your site uses Citrix servers, you will need to coordinate with the staff that maintain those servers so that client and server versions are synchronized.
 - Clinical application coordinators (CACs) or ADPACs for various applications
3. **Perform all pre-installation tasks.**

2.1 Pre-requisite Patches

Please check your system to verify that the following, previously released national patches are installed:

- GMPL*2*42
- GMPL*2*28
- GMPL*2*44
- GMRC*3*76
- GMRC*3*85
- GMTS*2.7*90
- GMTS*2.7*96
- LEX*2.0*86
- OR*3*121
- OR*3*157
- OR*3*311
- OR*3*312
- OR*3*317
- OR*3*318
- OR*3*322
- OR*3*341
- OR*3*348
- OR*3*349
- OR*3*356
- OR*3*363
- OR*3*366
- OR*3*374
- OR*3*385
- OR*3*388
- OR*3*389
- OR*3*392
- OR*3*394
- OR*3*418
- PSJ*5*267
- PSJ*5*311
- TIU*1*211
- TIU*1*239
- XU*8*609

3 Software Retrieval

CPRS GUI version 30.B consists of supporting patches from other projects (listed in Table 2 Additional Patches, below), the patch OR_30_350.KID, and the OR_30_350.ZIP file along with its supporting installation documents (all listed in Table 3 CPRS v30.b files

, below).

For national deployment, sites will download files from a Secure FTP site. The table below lists the files that will be distributed. CPRS v.30.b will be distributed using a controlled deployment over several months. Sites will be put in groups or waves and given a time period in which to install the software. Each site will be contacted regarding when their time is to install and further instructions will be given. Deploying in this manner ensures that CPRS development staff can be available, if needed, to help with the installation process.

PackMan messages will be sent to sites or regional support personnel through Forum. Sites will download Host files and zip files from a controlled Secure File Transfer Protocol (SFTP). The necessary installation files are:

Table 2 Additional Patches

Additional Required Patches to be downloaded	Supported Functionality	Host/Packman
TIU_1_268.KID	TIU support	Host
GMPL_2_47.KID	Problem List	Host
GMPL_2_45.KID	Problem List	Host
YS_501_116.KID	Mental Health	Host
MHA_501_116.ZIP	Mental Health DLL	ZIP File
PSJ_5_307.KID	Clinic Orders Support	Host
GMRV_5_28.KID	Vitals DLL Support	Host
VITL5_P28.ZIP	Vitals	ZIP File
XU8P642.KID	Timeout to assist with PKI Verify Service Failover	Host
XU_8_0_P641.ZIP	ePCS GUI tool	ZIP File
GMRC_30_81.KID	Name Change for Consults Earliest Date	Host
GMTS_27_112.KID	Health Summary support for GMRC*3.0*81	Host
OR_30_424.KID	Follow up to patch OR*3.0*350	Host

Table 3 CPRS v30.b files

CPRS v30 files to be downloaded	File Contents / Supported Functionality
OR_30_350.KID	M changes for CPRS v30.B
OR_30_350.ZIP	CPRS executable, CPRS Help file directory, Vitals DLL, Mental Health DLL and OrderCom.DLL

4 CPRS v30.b Test System Installation Checklist

The following activities should be completed in order.

Table 1 Installation Checklist

No.	Item	Done
Test/Mirror System Installation		
1	If you are ready for the released version and you do not already have access to the released version, contact REDACTED at REDACTED or the OIT PD CPRS Implementation Team .	

No.	Item	Done
2	<p data-bbox="284 254 1068 321">Confirm all Pre-requisite patches have been installed in your Test/Mirror system:</p> <p data-bbox="284 338 1149 405">Please check your system to verify that the following, previously released national patches are installed:</p> <ul data-bbox="332 422 560 1850" style="list-style-type: none"> • GMPL*2*42 • GMPL*2*28 • GMPL*2*44 • GMRC*3*76 • GMRC*3*85 • GMTS*2.7*90 • GMTS*2.7*96 • LEX*2.0*86 • OR*3*121 • OR*3*157 • OR*3*311 • OR*3*312 • OR*3*317 • OR*3*318 • OR*3*322 • OR*3*341 • OR*3*348 • OR*3*349 • OR*3*356 • OR*3*363 • OR*3*366 • OR*3*374 • OR*3*385 • OR*3*388 • OR*3*389 • OR*3*392 • OR*3*394 • OR*3*418 • PSJ*3*267 • PSJ*5*311 • TIU*1*211 • TIU*1*239 • XU*8*609 	

No.	Item	Done
3	Attend the CPRS v30.b Training session	
4	Install patch TIU*1*268 in test.	
5	Complete the Preinstallation Step for GMPL*2*47.	
6	Read the Pre/Post Installation Overview for patch GMPL*2*47.	
7	Install patch GMPL*2*47 in test.	
8	Install patch GMPL*2*45 in test.	
9	Install patch PSJ*5*307 in test.	
10	Install patch OR*3.0*350 in test.	
11	Install patch GMRV*5*28 in test.	
12	Install patch YS*5.01*116 in test.	
13	Unzip and then install the files in MHA_501_116.ZIP in test.	
14	Unzip and install the contents of VITL5_P28.ZIP in test.	
15	Install patch XU*8*642 in test.	
16	Unzip and install the contents of XU_8_0_P641.ZIP in test.	
17	Install patch GMRC*3.0*81 in test.	
18	Install patch GMTS*2.7*112 in test.	
19	Install patch OR*3.0*424 in test.	
20	Download CPRS GUI installation package OR_30_350.zip (see Section 5.2, ZIP File (OR_30_350.zip), below), install per the instructions in that section, and point user shortcuts to your Test/Mirror system	
21	Install the Ordercom DLL.	
22	Install the ePCS Data Entry for Prescriber GUI. Note: This should only be installed on workstations for users that set up providers to order controlled substances.	
23	If you have not already, place the CPRS documentation in a location where CPRS users and support personnel can access it.	
24	Add the new ORDER DIALOGS to any appropriate order menus so that your users can place clinic orders, and supply orders.	
25	If you do NOT use the Package level for the ORWOR CATEGORY SEQUENCE parameter, create new Instances for this parameter in order for the new orders in the CLINIC MEDICATIONS, CLINIC INFUSION and SUPPLIES/DEVICES display groups to be labeled properly.	
26	Set the name of the correct version of the Mental Health DLL.	

No.	Item	Done
27	Review the ORWRP REPORT LAB LIST parameter to determine if you have set it at the System, Division or User level. If you have it set at these levels, then edit the parameter to add the new reports .	
28	Check the OR REPORT DATE TYPE parameter and set it for how your site wants the date selection to display on the Reports and Labs tabs in CPRS.	
29	If your site uses Dragon dictation software, add to the .ini file to ensure that Dragon works correctly with CPRS.	
30	Check the Consults Configuration and complete any set up necessary.	
31	Check the OR MOB DLL VERSION parameter to ensure it is the latest version of the Med Order button dynamic link library (DLL).	
32	For the appropriate users, complete the One-Step Clinic Admin setup .	
33	For workstations that use the Mobile Electronic Documentation (MED) software, make the necessary changes to make it work with CPRS 30.b.	
34	Check all your institutions to verify the Facility DEA # and Facility DEA # Expiration date is correct in the INSTITUTION file (#4).	
35	Verify the installation in your Test/Mirror system has been successful. You can use the V30 Smoke Test Script.xls document to ensure that the patches have been installed correctly.	
36	Complete testing of CPRS 30.b in your Test/Mirror system.	

5 Installation Components

The installation of CPRS 30.b includes server-side patches, GUI executables, and dynamic link libraries (DLLs).

5.1 Additional Required Patches

For CPRS to function correctly, it is necessary that some patches be installed immediately prior to the installation of CPRS v30.B and some patches should be installed after the CPRS 30.B patch. These will be distributed with CPRS v30.B (see Section 3, , above), and they should be installed in the order delineated in the following sections.

5.1.1 TIU*1*268 in Test

This patch can be loaded with users in the system. Installation time will be less than 2 minutes.

1. Download the TIU_1_268.KID file from the appropriate Server to a directory on your system.
2. On the KIDS INSTALLATION menu, use the LOAD A DISTRIBUTION option, and enter the location of the Host File.
[XPD MAIN]:

```
Edits and Distribution ...
Utilities ...
Installation ...
```

Select Kernel Installation & Distribution System Option: Installation

```
1      Load a Distribution
2      Verify Checksums in Transport Global
3      Print Transport Global
4      Compare Transport Global to Current System
5      Backup a Transport Global
6      Install Package(s)
       Restart Install of Package(s)
       Unload a Distribution
```

3. From this menu, you may elect to use the following options (When prompted for the INSTALL NAME, enter "TIU*1.0*268"):
 - a. Backup a Transport Global - This option will create a backup message of any routines exported with this patch. It will not backup any other changes such as DD's or templates.
 - b. Compare Transport Global to Current System - This option will allow you to view all changes that will be made when this patch is installed. It compares all components of this patch (routines, DD's, templates, etc.).
 - c. Verify Checksums in Transport Global - This option will allow you to ensure the integrity of the routines that are in the transport global.
4. Use the Install Package(s) option and select the package.
 - a. When prompted "Want KIDS to INHIBIT LOGONs during the install? NO//", answer NO.
 - b. When prompted "Want to DISABLE Scheduled Options and Menu Options and Protocols? NO//", answer NO.

5.1.2 GMPL*2*47 in Test

Pre/Post Installation Overview:

In order to prevent hard errors and unnecessary Mailman messages from generating during the Clinical Reminder Problem file reindex process, Reminder Evaluations will be automatically disabled prior to indexing and re-enabled after successful completion. This entire process (indexing/disabling/enabling) will be tasked and automated in a post-installation routine (GMPLY47).

****IMPORTANT NOTE****: Once Reminder Evaluations are temporarily disabled, certain functional areas such as, the CPRS coversheet, Reminder Dialog Branching Logic, HS Report for Reminders, TIU/HS Objects for Reminders, and Reminder Order Checks will not function correctly.

Users trying to access these functional areas during the reindexing process, may receive various error/warning messages. For example, Reminder Dialogs will be turned off and display the following message: "Dialog is disable for reminder re-indexing". Reminder Order Checks will display the message: "Clinical Reminder evaluation is currently disabled; this order check cannot be processed". Coversheet Reminders will have a status of CNBD (Cannot Be Determined). HS Clinical Reminder components will either be blank or contain a status of CNBD.

Pre-Installation Instructions:

To ensure that the installer receives the appropriate notification messages in MailMan, please verify that the installer is added as a member to the mailgroup that is defined in the REMINDER MANAGEMENT MAILGROUP field #3 of the CLINICAL REMINDER PARAMETERS file #800.

Installation Instructions:

This patch loads several routines and may be installed with users on the system although it is recommended that it be installed during non-peak hours to minimize potential disruption to users. This patch should take less than 1 minute to install.

However depending on the size of your site's Problem file, it could take 1-1.5 hours for the reindexing process to complete. As an example, for a site that has 3 million entries in the Problem file, it took the reindexing process 1 hr to complete.

****IMPORTANT NOTE****: Given this information and the fact that reminder evaluations will be temporarily disabled, it is **STRONGLY RECOMMENDED**

that at least 1-1.5 hrs. is allocated for the completion of the reindex and that this be installed during afterhours to minimize disruption to users.

1. Download the GMPL_2_47.KID file from the appropriate Server to a directory on your system.
2. On the KIDS INSTALLATION menu, use the LOAD A DISTRIBUTION option, and enter the location of the Host File.
3. From the Kernel Installation and Distribution System Menu, select the Installation Menu. From this menu, you may elect to use the following options. When prompted for the INSTALL NAME enter the patch GMPL*2.0*47.
 - a. Backup a Transport Global - This option will create a backup message of any routines exported with this patch. It will not backup any other changes such as DDs or templates.
 - b. Compare Transport Global to Current System - This option will allow you to view all changes that will be made when this patch is installed. It compares all components of this patch (routines, DDs, templates, etc.).
 - c. Verify Checksums in Transport Global - This option will allow you to ensure the integrity of the routines that are in the transport global.
4. From the Installation Menu, select the Install Package(s) option and choose the patch to install.
5. When prompted 'Want KIDS to INHIBIT LOGONs during the install? NO//', response with NO.
6. When prompted 'Want to DISABLE Scheduled Options, Menu Options, and Protocols? NO//', respond with NO.

Post-Installation Instructions:

The post-install routine will call a Reminders API to reindex and clean up any outstanding ACRMT indexes that didn't get disposed of appropriately. It will also create a new auxiliary cross-reference, ACRMTA, for the Mapping Target multiple.

The post-install routine will also automatically disable the reminder evaluations prior to executing the reindex process. A MailMan message should be generated to the installer and Clinical Reminder mailgroup confirming so:

Subj: REMINDER EVALUATION DISABLED [#68774] 08/21/15@12:37 13 lines
From: POSTMASTER (Sender: INSTALLER,ONE) In 'IN' basket. Page 1

Reminder evaluation was disabled on Aug 21, 2015@12:37:43.
Because of this, the following TaskMan jobs can produce erroneous results.
Pending jobs should not be allowed to start until evaluation is enabled.
The results of running jobs should be discarded and if possible, running
jobs should be stopped.

Reason: index rebuild for file #9000011.

Reminders Due Report Jobs

Reminder Patient List Jobs

Reminder Extract Jobs

Once the re-indexing process is complete, a Problem List Reindex Complete notification message should be generated to the installer and Reminder mailgroup indicating so. The below example is taken from a development account and does not accurately reflect actual production times.

Subj: Index for global ^AUPNPROB(successfully built [#68773]
08/21/15@12:37
5 lines
From: INSTALLER,ONE In 'IN' basket. Page 1

Build of Clinical Reminders index for global ^AUPNPROB(completed.
Build finished at 08/21/2015@12:37:44
131 entries were created.
Elapsed time: 1 secs
0 errors were encountered.

Once the reindexing process has successfully completed, the reminder evaluations will automatically be re-enabled. A MailMan message should be generated to the installer and Reminder mailgroup confirming so:

Subj: REMINDER EVALUATION ENABLED [#68775] 08/21/15@12:37 2 lines
From: POSTMASTER (Sender: INSTALLER,ONE) In 'IN' basket. Page 1

Reminder evaluation was enabled on Aug 21, 2015@12:37:55.
It was disabled on Aug 21, 2015@12:37:43.

5.1.3 GMPL*2*45 in Test

This patch may be installed with users on the system although it is recommended that it be installed during non-peak hours to minimize potential disruption to users. This patch should take less than 1 minute to install.

1. Download the GMPL_2_45.KID file from the appropriate Server to a directory on your system.
2. On the KIDS INSTALLATION menu, use the LOAD A DISTRIBUTION option, and enter the location of the Host File and enter the location of the Host File GMPL_2_45.KID
3. From the same menu, you may select to use the following options:
(when prompted for INSTALL NAME, enter GMPL*2.0*45)
 - a. Verify Checksums in Transport Global - This option will allow you to ensure the integrity of the routines that are in the transport global.
 - b. Print Transport Global - This option will allow you to view the components of the KIDS build.
 - c. Compare Transport Global to Current System - This option will allow you to view all changes that will be made when this patch is installed. It compares all components of this patch (routines, DD's, templates, etc.).
 - d. Backup a Transport Global - This option will create a backup message of any routines exported with this patch. It will not backup any other changes such as DD's or templates.
4. Use the Install Package(s) option and select the package GMPL*2.0*45
5. When Prompted "Want KIDS to INHIBIT LOGONs during the install? NO/" respond NO.
6. When Prompted "Want to DISABLE Scheduled Options, Menu Options, and Protocols? NO/" respond NO.

5.1.4 PSJ*5*307 in Test

Pre/Post Installation Overview:

This patch is being released as a part of the CPRS v30 phased release. Specific instructions on downloading the software will be distributed when your site is scheduled to install.

Pre-Installation Instructions:

This patch may be installed with users on the system although it is recommended that it be installed during non-peak hours to minimize potential disruption to users. Specifically, this patch should not be installed during heavy usage times for Clinic Orders or BCMA Med Order Button orders. This patch should take less than 5 minutes to install.

Installation Instructions:

-
1. From the Kernel Installation & Distribution System menu, select the Installation menu.
 2. From this menu, choose to Load a Distribution and enter the location of the Host File PSJ_5_307.KID.
 3. From the Kernel Installation and Distribution System Menu, select the Installation Menu. From this menu, you may elect to use the following options. When prompted for the INSTALL NAME enter the patch PSJ*5.0*307:
 - a. Backup a Transport Global - This option will create a backup message of any routines exported with this patch. It will not backup any other changes such as DDs or templates.
 - b. Compare Transport Global to Current System - This option will allow you to view all changes that will be made when this patch is installed. It compares all components of this patch (routines, DDs, templates, etc.).
 - c. Verify Checksums in Transport Global - This option will allow you to ensure the integrity of the routines that are in the transport global.
 4. From the Installation Menu, select the Install Package(s) option and choose the patch to install.
 5. When prompted 'Want KIDS to Rebuild Menu Trees Upon Completion of Install? NO//', respond NO.
 6. When prompted 'Want KIDS to INHIBIT LOGONs during the install? NO//', respond NO.

7. When prompted 'Want to DISABLE Scheduled Options, Menu Options, and Protocols? NO//', respond NO.
8. If prompted 'Delay Install (Minutes): (0 - 60): 0//' respond 0.

5.1.5 OR*3*350 in Test

This patch should be loaded during non-peak hours to minimize disruption to users. Installation will take less than 1 minute. Users may remain on the system.

Note: When installing patch OR*3*350, sites may notice a message that shows that they are missing patch OR*3*237, but this is incorrect. The reason is that patch OR*3*243 did not list patch 237 although it should have. Patch OR*3*350 does list patch 237 in the second line as it should.

1. Download the OR_30_350.KID file from the appropriate Server to a directory on your system.
2. On the KIDS INSTALLATION menu, use the LOAD A DISTRIBUTION option, and enter the location of the Host File.
3. From this menu, you may elect to use the following options
 - a. Backup a Transport Global
 - b. Compare Transport Global to Current System
 - c. Verify Checksums in Transport Global
4. Use the Install Package(s) options and select the package OR*3.0*350.
5. At the “Want to RUN the Environment Check Routine?”, respond YES.
6. When prompted “Want KIDS to Rebuild Menu Trees Upon Completion of Install?”, respond NO.
7. When prompted Please select the recipients for the NON-VA MEDICATION COMPLEX QUICK ORDER DIALOG REPORT below.
 Send mail to:
Enter the name of person who should receive this report, such as a CAC at the site.
 Select basket to send to:
Respond IN//.
7. When prompted 'Want KIDS to INHIBIT LOGONs during the install? NO//' respond NO.
8. When prompted 'Want to DISABLE Scheduled Options, Menu Options, and Protocols? NO//', respond NO.

5.1.6 GMRV*5*28 in Test

Installation Instructions:

=====

1. Download the GMRV_5_28.KID file from the appropriate server to a directory on your system.
2. Load the KIDS distribution that is contained in file GMRV_5_28.KID using the Load a Distribution option on the Installation menu.
3. Start up the Kernel Installation and Distribution System Menu [XPD MAIN]:

Edits and Distribution ...
Utilities ...
Installation ...
4. From this menu, you may elect to use the following options: (When prompted for the INSTALL NAME, enter GMRV*5.0*28):
 - a. Backup a Transport Global -This option will create a backup message of any routines exported with this patch. It will not backup any other changes such as DD's or templates.
 - b. Compare Transport Global to Current System - This option will allow you to view all changes that will be made when this patch is installed. It compares all components of this patch (routines, DD's, templates, etc.).
 - c. Verify Checksums in Transport Global - This option will allow you to ensure the integrity of the routines that are in the transport global.
5. Use the Install Package(s) option and select the package GMRV*5.0*28.
6. When prompted 'Want KIDS to INHIBIT LOGONs during the install? NO//', answer NO.
7. When prompted 'Want to DISABLE Scheduled Options and Menu Options and Protocols? NO//', answer NO.

5.1.7 YS*5.01*116 in Test

This patch may be installed with users on the system although it is recommended that it be installed during non-peak hours to minimize potential disruption to users. This patch should take less than 1 minute to install.

1. Download the YS_501_116.KID file from the appropriate server to a directory on your system.
2. From the Kernel Installation & Distribution System menu, select the Installation menu.
3. From this menu, choose to Load a Distribution and enter the location of the Host File YS_501_116.KID
4. From the same menu, you may select to use the following options:
(when prompted for INSTALL NAME, enter YS*5.01*116)
 - a. Print Transport Global - This option will allow you to view the components of the KIDS build.
 - b. Compare Transport Global to Current System - This option will allow you to view all changes that will be made when this patch is installed. It compares all components of this patch (routines, DD's, templates, etc.).
5. Use the Install Package(s) option and select the package YS*5.01*116
6. When Prompted "Want KIDS to INHIBIT LOGONs during the install? NO/" respond NO.
7. When Prompted "Want to DISABLE Scheduled Options, Menu Options, and Protocols? NO/" respond NO.

5.1.8 XU*8*642 in Test

This patch may be installed with users on the system. This patch should take less than 1 minute to install. It may be queued for installation.

There are no options that need to be disabled.

1. Download the XU8P642.KID file from the appropriate Server to a directory on your system.
2. On the KIDS INSTALLATION menu, use the LOAD A DISTRIBUTION option, and enter the location of the Host File.
3. From the Kernel Installation and Distribution System Menu, select the Installation Menu. From this menu, you may elect to use the following option. When prompted for the INSTALL enter the patch XU*8.0*642
 - a. Print Transport Global - This option lets you print the contents of a Transport Global that is currently loaded in the ^XTMP global.
 - b. Backup a Transport Global - This option will create a backup message of any routines exported with this patch. It will not backup any other changes such as DDs or templates.
 - c. Compare Transport Global to Current System - This option will allow you to view all changes that will be made when this patch is installed. It compares all components of this patch (routines, DDs, templates, etc.).
 - d. Verify Checksums in Transport Global - This option will allow you to ensure the integrity of the routines that are in the transport global.
4. From the Installation Menu, select the Install Package(s) option and choose the patch to install.
5. When prompted 'Want KIDS to Rebuild Menu Trees Upon Completion of Install? NO//' answer "NO".
6. When prompted 'Want KIDS to INHIBIT LOGONs during the install? NO//' answer "NO".
7. When prompted 'Want to DISABLE Scheduled Options, Menu Options, and Protocols? NO//' answer "NO".
8. If prompted 'Delay Install (Minutes): (0 - 60): 0//' answer "0".

5.1.9 GMRC*3.0*81 in Test

Pre/Post Installation Overview:

The pre-install will remove the current data dictionary for the REQUEST/CONSULTATION file (#123). The new data dictionary, containing the renamed CLINICALLY INDICATED DATE field, will be installed during the KIDS installation. The patch does not contain any automated post-install actions.

Pre-Installation Instructions:

This patch will overwrite the GMRC SETUP REQUEST SERVICE entry in the INPUT TEMPLATE file. If your site has made any local modifications to this input template, they should be captured prior to installing GMRC*3.0*81, and then restored soon after.

LOCAL OBJECTS BASED ON EARLIEST DATE

=====
If your site has created any local data objects based on the EARLIEST DATE field, those objects will continue to function normally. However, it is likely that the displayed name/header for such an object would need to be updated to reflect that the underlying field name has changed from EARLIEST DATE to CLINICALLY INDICATED DATE.

This patch may be installed with users on the system although it is recommended that it be installed during non-peak hours to minimize potential disruption to users. This patch should take less than 5 minutes to install.

1. Download the GMRC_30_81.KID file from the appropriate server to a directory on your system.
2. From the Kernel Installation & Distribution System menu, select the Installation menu.
3. From this menu, choose to Load a Distribution and enter the location of the Host File GMRC_30_81.KID
4. From the same menu, you may select to use the following options:
(when prompted for INSTALL NAME, enter GMRC*3.0*81)
 - a. Verify Checksums in Transport Global - This option will allow you to ensure the integrity of the routines that are in the transport global.
 - b. Print Transport Global - This option will allow you to view

the components of the KIDS build.

- c. Compare Transport Global to Current System - This option will allow you to view all changes that will be made when this patch is installed. It compares all components of this patch (routines, DD's, templates, etc.).
- d. Backup a Transport Global - This option will create a backup message of any routines exported with this patch. It will not backup any other changes such as DD's or templates.

5. Use the Install Package(s) option and select the package GMRC*3.0*81

6. When Prompted "Want KIDS to INHIBIT LOGONs during the install? NO/" respond NO.

7. When Prompted "Want to DISABLE Scheduled Options, Menu Options, and Protocols? NO/" respond NO.

Post install instructions

If your site has local objects based on the EAD field, ensure that relevant end user displays are updated appropriately. Reference note above entitled LOCAL OBJECTS BASED ON EARLIEST DATE.

5.1.10 GMTS*2.7*112 in Test

Pre/Post Installation Overview:

This patch does not contain any automated pre-install actions. The post-install will add the missing components to the Patient Data Exchange (PDX) and also update the DESCRIPTION field of the Consults Brief health summary component (CNB).

Pre-Installation Instructions:

This patch may be installed with users on the system although it is recommended that it be installed during non-peak hours to minimize potential disruption to users. This patch should take less than 5 minutes to install.

1. Download the GMTS_27_112.KID file from the appropriate server to a directory on your system.
2. From the Kernel Installation & Distribution System menu, select the Installation menu.

3. From this menu, choose to Load a Distribution and enter the location of the Host File GMTS_27_112.KID
4. From the same menu, you may select to use the following options: (when prompted for INSTALL NAME, enter GMTS*2.7*112)
 - a. Verify Checksums in Transport Global - This option will allow you to ensure the integrity of the routines that are in the transport global.
 - b. Print Transport Global - This option will allow you to view the components of the KIDS build.
 - c. Compare Transport Global to Current System - This option will allow you to view all changes that will be made when this patch is installed. It compares all components of this patch (routines, DD's, templates, etc.).
 - d. Backup a Transport Global - This option will create a backup message of any routines exported with this patch. It will not backup any other changes such as DD's or templates.
4. Use the Install Package(s) option and select the package GMTS*2.7*112
5. When Prompted "Want KIDS to INHIBIT LOGONs during the install? NO/" respond NO.
6. When Prompted "Want to DISABLE Scheduled Options, Menu Options, and Protocols? NO/" respond NO.

Post-Installation Instructions:

GMTSP112 may be deleted from the system once all patch functionality has been verified as working as expected. IT staff may choose to keep a copy of this routine for future reference.

5.1.11 OR*3.0*424 in Test

Installation Instructions

This patch may be installed with users on the system although it is recommended that it be installed during non-peak hours to minimize potential disruption to users. This patch should take less than 1 minute to install.

1. Download the OR_30_424.KID file from the appropriate Server to a directory on your system.
2. On the KIDS INSTALLATION menu, use the LOAD A DISTRIBUTION option, and enter the location of the Host File.
3. From the Kernel Installation and Distribution System Menu, select the Installation Menu. From this menu, you may elect to use the following option. When prompted for the INSTALL enter the patch OR*3.0*424.
 - a. Print Transport Global - This option lets you print the contents of a Transport Global that is currently loaded in the ^XTMP global.
 - b. Backup a Transport Global - This option will create a backup message of any routines exported with this patch. It will not backup any other changes such as DDs or templates.
 - c. Compare Transport Global to Current System - This option will allow you to view all changes that will be made when this patch is installed. It compares all components of this patch (routines, DDs, templates, etc.).
 - d. Verify Checksums in Transport Global - This option will allow you to ensure the integrity of the routines that are in the transport global.
4. From the Installation Menu, select the Install Package(s) option and choose the patch to install: OR*3.0*424.
5. When prompted 'Want KIDS to INHIBIT LOGONs during the install? NO//' Answer 'NO'
6. When prompted 'Want to DISABLE Scheduled Options, Menu Options, and Protocols? NO//' Answer 'NO'

5.2 ZIP File (OR_30_350.zip)

The ZIP file contains the CPRS GUI executable file as well as the DLLs associated with 30B, Vitals, Mental Health and One-Step Clinic Admin.

Download the ZIP file and extract all the files.

Placement of DLLs:

The DLLs are no longer required to reside on individual workstations. For example, if you are doing a network install of the CPRSChart executable, you can place the DLLs in that same directory.

NOTE: *Some sites have experienced unacceptable delays in launching the DLLs if they are located on the server. If this occurs, the DLLs should be placed on the local workstations.*

Here is the hierarchy the CPRS GUI uses to search for the DLLs:

1. The same folder as the application
2. A “Common Files\” folder in the same folder as the application
3. Windows 7:
 - For 64 bit machines: “C:\Program Files (x86)\Vista\Common Files”
 - For 32 bit machines: “C:\Program Files\Vista\Common Files”

5.3 GMV_VitalsViewEnter.DLL

IMPORTANT!

The new Vitals DLL is NOT backwards compatible, meaning the new DLL cannot be used to enter vitals information in a previous version of CPRS. For those workstations that will access both CPRS 30.b and a previous version (such as a workstation testing CPRS in a test account, but also accessing the previous version in production), you MUST BACK UP and USE THE PREVIOUS VERSION for production while using the new version for test. When CPRS 30.b is in production, you can switch to the new DLL and delete the previous version.

5.3.1 Manual Installation

Unzip the VITL5_P28.ZIP file and move the files to an appropriate directory and/or workstations.

Windows 7:

- For 64 bit machines: “C:\Program Files (x86)\Vista\Common Files”
- For 32 bit machines: “C:\Program Files\Vista\Common Files”

If you are running the Vitals Lite DLL files from individual workstations and you want to push the files using SCCM, you should include the files from the VITL5_P28.zip in your script.

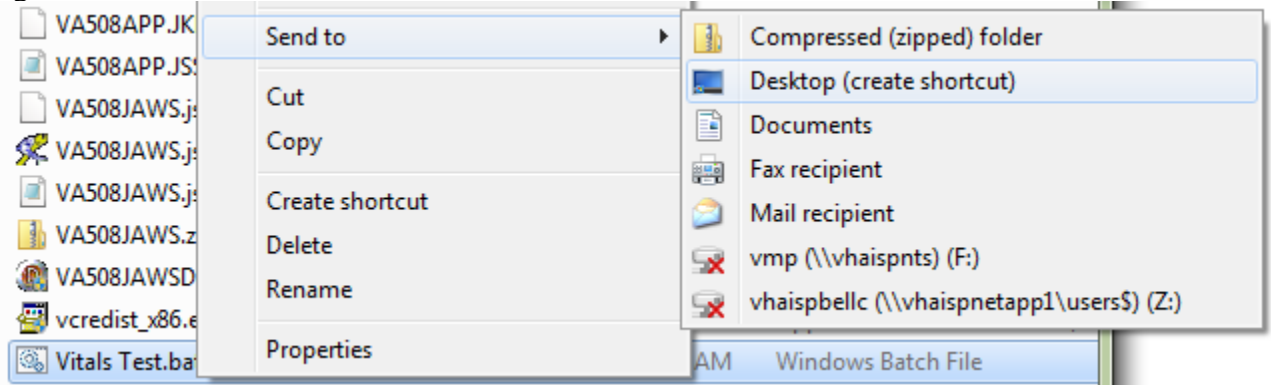
1. Place the batch file (without the ;1) in the same folder as the vitals lite DLL.
2. Rename the version 29 DLL (date of 1/21/2011) to GMV_VitalsViewEnter.dll.bkup29.
3. If not already, rename the version 30 DLL (date of 11/05/2013) to GMV_VitalsViewEnter.dll.
4. Both of these files should be in the same folder (see *fig 1*).

fig 1

 GMV_VitalsViewEnter.dll	5/21/2014 8:32 AM	Application extens...	4,156 KB
 GMV_VitalsViewEnter.dll.bkup29	1/21/2011 12:56 PM	BKUP29 File	1,601 KB

5. Right click on the batch file and select “send to” then “desktop” (see *fig 2*).

fig 2



6. Now this batch can be run via the shortcut on the desktop.

When running the batch you will see the following question:
Do you want to test the new Vitals DLL with CPRS30: (y/n)

Answering Yes or Y will setup the version 30 DLL for testing. Answering No or N will setup the version 29 DLL for testing.

If you have any questions please feel free to email [REDACTED](#) or the [OIT PD CPRS Implementation Team](#).

5.3.2 MSP Installation

The Vitals DLL will be included in the v30 msp file. But, for test installations, it is expected you will be using the manual installation.

5.4 YS_MHA_A_XE3.DLL

5.4.1 Manual Installation

Unzip the MHA_501_116.ZIP file and move the files to an appropriate directory and/or workstations.

Windows 7:

- For 64 bit machines: “C:\Program Files (x86)\Vista\Common Files”
- For 32 bit machines: “C:\Program Files\Vista\Common Files”

Note: You may need to have a user with Administrator rights complete this step.

5.4.2 MSP Installation

The Mental Health DLL will be included in the v30 MSP file. But, for test installations, it is expected you will be using the manual installation.

5.5 CPRS GUI Executable Methods of Installation

The following methods of installation of CPRS are available. Sites' choice of which method(s) to use will depend upon Regional/VISN policies, Local Area Network (LAN) performance or other local circumstances. User requirements, physical location and methods of connection to the VA network may warrant more than one of the options below to be used.

5.5.1 Network (Shared) Installation

This method is typically the simplest to maintain, providing the local network infrastructure is robust enough to handle the additional traffic caused by users running the GUI executable (CPRSChart.exe) across the LAN.

The GUI executable (CPRSChart.exe), and ancillary files (DLLs, Help files etc.), are copied to a network shared location. Users are provided with a desktop shortcut to run CPRSChart.exe directly from the network shared drive. The necessary command line parameters (Vista server address or name and RPC Broker Port number) are entered in the “Target” field of the shortcut properties

At the time of a CPRS version update the copy of CPRSChart.exe (and any updated ancillary files) is simply replaced, on the network share, with the new version.

Any users requiring access to another site's CPRS system can be given an alternate desktop shortcut with command line parameters appropriate to the intended target Vista system.

If a user requires access to an older or newer version of CPRS (e.g. during a phased deployment, when sites are temporarily not all on the same version, or for testing purposes) a different version of CPRSChart.exe can be placed in a separate network location and the user be supplied with an appropriate alternate shortcut (different Target path and different Vista server command line parameters).

Note: The version of CPRSChart a user executes must always match the patch-level version of the Vista system targeted.

5.5.2 Citrix installation

The GUI executable (CPRSChart.exe) and ancillary files (DLLs, Help files etc.) are installed and run from a remote workstation, and the user views the remote workstation's screen on their local workstation.

For the local site users, this method is on a similar level to the Network (shared) installation above. The users' workstations require only an appropriate shortcut (and the necessary Citrix Access Group (CAG) infrastructure).

Note: For issues with CAG, please contact your local or national help desk.

For the Citrix Farm administrator, this method involves installations on the host in a similar manner to either the Gold Path or the Direct Access methods outlined below.

During a phased deployment of a new version of CPRS, if a Citrix Farm is serving users who are scheduled to deploy at different times, the Farm administrator may be required to temporarily maintain hosts with both the old and the new versions of CPRSChart.exe available.

5.5.3 Gold Path installation

This is the "standard" method of installation where the GUI executable (CPRSChart.exe), and ancillary files (DLLs, Help files etc.), are installed on and run from the user's local workstation. In normal day-to-day operation, the user's shortcut executes a locally installed copy of CPRSLoader.exe which looks in a pre-configured network "Gold Path" (specified in a command line parameter) to see if there is a later version of CPRSChart.exe ready to be installed. If not, then execution passes to the locally installed version of CPRSChart.exe. If an updated version is found on the Gold Path, then a silent installation of the new version takes place, following which the newly installed version of CPRSChart.exe is executed on the local workstation.

This method of installation initially requires the distribution and installation of a Microsoft Software Installation (MSI) file (CPRSLoader.msi) to each user's workstation, typically accomplished via SCCM. This is outside the scope of CPRS development. A National package (CPRS Loader 1.30.40) has been prepared and made available to Regional COR Client Technologies leadership.

The CPRS Loader installation package can be found on the System Center Configuration Manager (SCCM) central site at the following locations.

Package Name: 1VA - VA CPRS Loader

Package ID: 1VA004E7, R03002C4

Test Location:

VA Central Site Packages > Test > 1VA - VA CPRS Loader

Production Location:

VA Central Site Packages > Production > 1VA – Applications > 1VA - VA CPRS Loader

All details of the SCCM package can be found in the build document and should be reviewed before deployment:

<http://vaww.eie.va.gov/SysDesign/CS/Shared Documents/Build Documents/Application Tier 3 and 4/ESE VA CPRS Loader Build Document.pdf>

The CPRSChart.exe component of the update is held in a Microsoft Software Patch (MSP) file (CPRSChart.msp) which is copied to the network Gold Path location—that should be all that is required for a normal CPRS version update for sites using this method. The exception is if a new version of CPRS Loader is also being released, in which case the cycle begins again with the distribution to users' workstations of the new CPRSLoader.msi (before the new CPRSChart.msp is copied to the network Gold Path)—**this is the circumstance in which CPRS v30b is being released.**

The CPRS deployment software distribution will include an appropriate version of the CPRS Microsoft patch file (named CPRS_XX_YY.msp, where XX is the current version number for CPRS, and YY is the current build number. At this point the current file name is CPRS_30_72.msp). This file has the named version of CPRSChart embedded within it, along with any updated ancillary files. Also included in the deployment software distribution will be a .VER file. This file will have the same name as the MSP file, with only the file extension changed. As an example, the .VER file for CPRS_30_72.MSP will be named CPRS_30_72.VER. To be effective, the .VER file must be placed in the same Gold Path in which the .MSP file was placed. The .VER is optional but beneficial. It will allow the CPRS loader to much more quickly find an appropriate version of CPRSChart.exe for use with the current Vista system. Including the VER file in the Gold Path can shorten CPRS start times substantially.

For the convenience of local System Administrators, the file CPRSLoader.msi is also included in the release package, in case they need to manually install it on a workstation.

5.5.4 Direct Access to a Local Copy of CPRSChart.exe (bypassing the loader)

In cases where a site's network performance is weak enough that CPRSLoader.exe, in checking the Gold Path every time a user starts CPRS, introduces unacceptable delays, some sites have elected to by-pass CPRSLoader.exe altogether and have user's shortcuts point directly to a local installation of CPRSChart.exe. The downside to this approach is that a future release of CPRSChart.exe will not be automatically picked up from the Gold Path by that workstation and the new CPRSChart.exe (plus any additional changed DLLs and Help files) will need to be pushed out to workstations by other means, such as a custom SCCM package.

NOTE: No custom SCCM packages are provided for this purpose. It would be the responsibility of the site or region to write their own custom SCCM package or to contact national SCCM support for assistance.

An alternative, hybrid, version of this method would be to have two shortcuts for the users: One, for day-to-day use, which points directly to the local CPRSChart.exe and a second, to be used only for updating, which points to CPRSLoader.exe.

5.5.5 Manual installation

Manual installation of CPRSChart.exe on an individual workstation may be necessary for troubleshooting, testing or other unconventional circumstances.

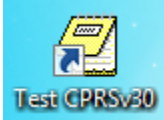
This information may also be useful to any sites choosing the “Direct access” method above, if they are not using the hybrid option described at the end of that section.

1. Locate the OR_30_350.ZIP and unzip the file.
2. If this is an installation for a conventional, day-to-day CPRS user, then Copy CPRSChart.exe to C:\Program Files (x86)\CPRS\.

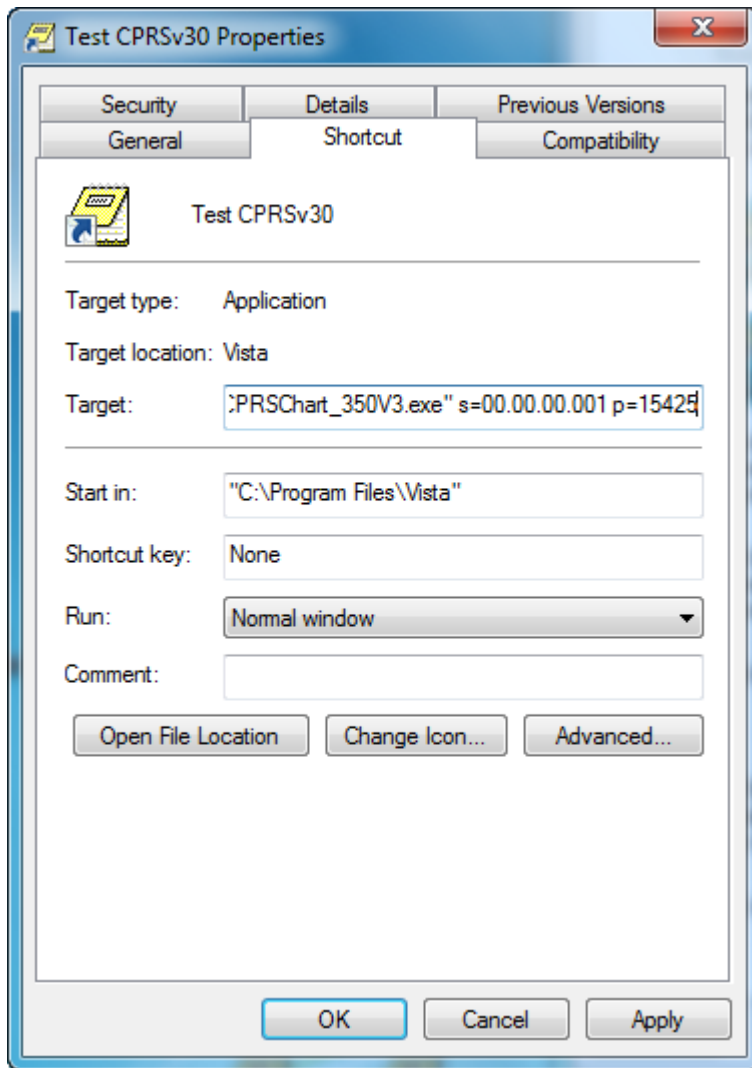
If this is an installation for a secondary use (e.g. testing or accessing a different version of CPRS), then copy CPRSChart.exe to a different location than the conventional path above (e.g. "C:\Program Files (x86)\CPRSTest" or other appropriate naming).

Note: You may need to have a user with local machine Administrator rights complete this step.

3. Create a Shortcut and name appropriately for the version or system being accessed, e.g. something like, "Test CPRSv30b" would give the user a clear indication that this is not the normal CPRS icon.



4. Copy the borlandmm.dll file **into the same directory** as CPRSChart.exe as chosen in step 2.
 5. Determine the DNS server name or IP address for the appropriate VistA server.
 6. Determine the Broker RPC port for the VistA account.
 7. Enter IP and RPC port in the Target field of the Shortcut properties (or use ServerList.exe).
- Note:** There is an issue currently with ServerList on some machines and the preferred method is to put the parameters in the shortcut as shown in the following graphic.



Example of what the shortcut properties dialog might look like.

The server and port number shown above are not real and are for example only.

5.6 Order Com DLL installation

The OrderCom.dll file was part of the OR_30_350.ZIP file from step 5.2.

5.6.1 Manual Installation

1. Locate the OrderCom.dll file.
2. Copy the OrderCom.dll file to the Vista\Common File directory.

Windows 7:

- For 64 bit machines: “C:\Program Files (x86)\Vista\Common Files”
- For 32 bit machines: “C:\Program Files\Vista\Common Files”

Note: You may need to have a user with Administrator rights complete this step.

5.7 ePCSDDataEntryForPrescriber Installation

Note: This software should only be installed on the workstations of those who configure providers’ information regarding electronic prescribing of controlled substances.

1. Unzip the XU_8_0_P641.ZIP file.
2. Copy the epcsdentryforprescriber.exe file to the workstations for who use the software.

5.7.1 Manual Installation

1. Locate the ePCSDDataEntryForPrescriber.exe file.
2. Copy the ePCSDDataEntryForPrescriber.exe file to the Vista\Common File directory.

Windows 7:

- For 64 bit machines: “C:\Program Files (x86)\Vista\Common Files”
- For 32 bit machines: “C:\Program Files\Vista\Common Files”

Note: You may need to have a user with Administrator rights complete this step.

5.8 CPRS Documentation

The documentation for the CPRS 30.B release is listed below.

Table 4 CPRS v30.b documentation

File Name	Description
cprsguium.doc	CPRS User Guide in Word format
cprsguium.pdf	CPRS User Guide in Acrobat format
cprslmtm.doc	CPRS Technical Manual in Word format
cprslmtm.pdf	CPRS Technical Manual in Acrobat format
cprsguitm.doc	CPRS GUI Technical Manual in Word format
cprsguitm.pdf	CPRS GUI Technical Manual in Acrobat format

or_30_350_rn.doc	CPRS GUI v30.b Release Notes in Word format
or_30_350_rn.pdf	CPRS GUI v30.b Release Notes in Acrobat format
or_30_350_ig.doc	CPRS GUI v30.b Installation Guide in Word format (this document)
or_30_350_ig.pdf	CPRS GUI v30.b Installation Guide in Acrobat format

6 Post Install Instructions

6.1 New Order Dialogs

The following ORDER DIALOG entries have been exported in patch OR*3*350:

Order Dialog - Name	Order Dialog – Display Text
CLINIC OR PAT FLUID OE	Clinic Infusions
PSJ OR CLINIC OE	Clinic Medications
PSO SUPPLY	Supplies

These new ORDER DIALOGS will need to be added to any appropriate order menus at your site so that your users can place these types of orders.

6.2 ORWOR CATEGORY SEQUENCE Parameters

The Parameter ORWOR CATEGORY SEQUENCE defines for a site the order of display groups for orders on the Orders tab of CPRS. In order for the new orders in the CLINIC MEDICATIONS, CLINIC INFUSION and SUPPLIES/DEVICES display groups to be labeled properly, new sequence values must be entered as new Instances for this parameter. The Package level parameter has been exported with the new instance/values for these two new display groups as shown in the table below.

Parameter	Instance	Value
-----	-----	-----
PKG: ORDER ENTRY/RESULTS REPOR	5	NON VA MEDS
PKG: ORDER ENTRY/RESULTS REPOR	10	M.A.S.
PKG: ORDER ENTRY/RESULTS REPOR	20	ALLERGIES
PKG: ORDER ENTRY/RESULTS REPOR	30	VITALS/MEASUREMENTS
PKG: ORDER ENTRY/RESULTS REPOR	35	ACTIVITY
PKG: ORDER ENTRY/RESULTS REPOR	40	NURSING
PKG: ORDER ENTRY/RESULTS REPOR	50	DIETETICS
PKG: ORDER ENTRY/RESULTS REPOR	59	CLINIC INFUSIONS
PKG: ORDER ENTRY/RESULTS REPOR	60	IV MEDICATIONS

PKG: ORDER ENTRY/RESULTS REPOR 65 MEDICATIONS	OUTPATIENT
PKG: ORDER ENTRY/RESULTS REPOR 68	NON-VA MEDICATIONS
PKG: ORDER ENTRY/RESULTS REPOR 69	CLINIC MEDICATIONS
PKG: ORDER ENTRY/RESULTS REPOR 70 MEDICATIONS	INPATIENT
PKG: ORDER ENTRY/RESULTS REPOR 75	LABORATORY
PKG: ORDER ENTRY/RESULTS REPOR 80	IMAGING
PKG: ORDER ENTRY/RESULTS REPOR 90	CONSULTS
PKG: ORDER ENTRY/RESULTS REPOR 100	PROCEDURES
PKG: ORDER ENTRY/RESULTS REPOR 110	SURGERY
PKG: ORDER ENTRY/RESULTS REPOR 120 SERVICES	OTHER HOSPITAL
PKG: ORDER ENTRY/RESULTS REPOR 130	SUPPLIES/DEVICES

However, if your site has system or user level sequences defined then these display groups will need to be manually placed in your custom sequences based upon your sites discretion. Below is an example of adding these display groups to the sequence:

```

<TEST ACCOUNT> LV List Values for a Selected Parameter
<TEST ACCOUNT> LE List Values for a Selected Entity
<TEST ACCOUNT> LP List Values for a Selected Package
<TEST ACCOUNT> LT List Values for a Selected Template
<TEST ACCOUNT> EP Edit Parameter Values
<TEST ACCOUNT> ET Edit Parameter Values with Template
<TEST ACCOUNT> EK Edit Parameter Definition Keyword

You have PENDING ALERTS
Enter "VA to jump to VIEW ALERTS option

Select General Parameter Tools <TEST ACCOUNT> Option: EP Edit
Parameter Values
--- Edit Parameter Values ---

Select PARAMETER DEFINITION NAME: ORWOR CATEGORY SEQUENCE Orders
Category S
equence

ORWOR CATEGORY SEQUENCE may be set for the following:

4 User USR [choose from NEW PERSON]
8 System SYS [TEST.CLEVELAND.MED.VA.GOV]
10 Package PKG [ORDER ENTRY/RESULTS REPORTING]

Enter selection: 8 System TEST.CLEVELAND.MED.VA.GOV

--- Setting ORWOR CATEGORY SEQUENCE for System:
TEST.CLEVELAND.MED.VA.GOV ---
Select Sequence: 91

```

```

Are you adding 91 as a new Sequence? Yes//  YES

Sequence: 91//  91
Display Group: CLINIC
  1  CLINIC INFUSIONS
  2  CLINIC INJECTIONS
  3  CLINIC MEDICATIONS
  4  CLINIC ORDERS
CHOOSE 1-4: 3  CLINIC MEDICATIONS
Select Sequence: 92
Are you adding 92 as a new Sequence? Yes//  YES

Sequence: 92//  92
Display Group: CLINIC
  1  CLINIC INFUSIONS
  2  CLINIC INJECTIONS
  3  CLINIC MEDICATIONS
  4  CLINIC ORDERS
CHOOSE 1-4: 1  CLINIC INFUSIONS
Select Sequence:

```

6.3 YS MHA_A DLL NAME Parameter

The Mental Health DLL has a new parameter. The purpose of this parameter is to allow you to specify the name of the DLL file associated with the Mental Health application. This allows both the current version and the new version of the Mental Health DLL to co-exist on a user's workstation during the time that it is being tested prior to production availability.

For your test account, you will set this parameter to the name of the new DLL distributed with CPRS v30b.

```

Select PARAMETER DEFINITION NAME: YS MHA_A DLL NAME      Name of the YS_MHA_A
dll to use

----- Setting YS MHA_A DLL NAME  for System: CPRS30.FO-SLC.MED.VA.GOV -----
DLL NAME: YS_MHA_A_XE3.DLL//

```

6.4 New Reports on Labs Tab

Three new reports have been added in CPRS v30B. They are exported at the Package level in the parameter: ORWRP REPORT LAB LIST.

You will need to review the parameter to determine if you have set the System, Division or User level. If you have, then the new reports will not be available until you edit the parameter.

The three new reports are:

ORRPL LAB OVERVIEW

ORRPL LAB ORDERS PEND

ORRPL LAB ORDERS ALL

6.5 OR REPORT DATE SELECT TYPE Parameter

This parameter, which accepts both Division and System level settings, will define how date selection is displayed. A 'YES' will change the Reports and Labs Tabs in CPRS to use Radio buttons to make selections rather than from a list.

6.6 Update for Dragon Naturally Speaking

There is an issue with dictating notes using Dragon dictation software. It is expected that the vendor will make a change to correct this problem in a future release. To address this issue until that release, an edit will need to be made in a Dragon configuration file as shown below.

Edit C:\ProgramData\Nuance\NaturallySpeaking12\nsapps.ini and add the following four lines for dictation into CPRS 30B:

```
[CPRSChart]
App Support GUID={dd100104-6205-11cf-ae61-0000e8a28647}
[CPRSChart\Enable Class Names]
TRichEdit=4
```

6.7 Consults Setup

6.7.1 Parameter Update

The ORCDGMRC EARLIEST DATE DEFAULT parameter has been replaced by a new parameter, ORCDGMRC CLIN IND DATE DEFAULT. This is the parameter that controls the default value for the "Clinically indicated date" field on the generic consult and procedure order dialogs of CPRS GUI and also any new consult quick orders. The ORCDGMRC EARLIEST DATE DEFAULT parameter was restricted to a PACKAGE level value. The ORCDGMRC CLIN IND DATE DEFAULT parameter allows for DIVISION, SYSTEM, and PACKAGE.

ORCDGMRC CLIN IND DATE DEFAULT is being exported with a PACKAGE level value of NULL. A null value will provide default behavior that forces a provider to actively choose a date when placing consult/procedure orders.

Possible Site Set Up

Sites may want to adjust the defined dates for the following:

- The default date for the “Clinically Indicated Date” for consults and procedures dialogs
- The date used in existing quick orders

Need to Change Default Clinically Indicated Date Value?

During the OR*3.0*350 post-install, the PACKAGE level value for the ORCDGMRC EARLIEST DATE DEFAULT parameter was captured and then set into the SYSTEM level value for the ORCDGMRC CLIN IND DATE DEFAULT parameter. If your site wishes to view or edit the ORCDGMRC CLIN IND DATE DEFAULT parameter, use the new option Consults Clinically Indicated Date Default [ORW CLIN IND DATE DFLT] found on the CPRS Configuration (Clin Coord) [OR PARAM COORDINATOR MENU] menu.

Changing the Date for Existing Quick Orders

NOTE: Saved quick orders and the date parameter.

Existing quick orders do not automatically update if the value for the Clinically indicated date parameter is changed. If your site decides to change the date value for OCDGMRC CLIN IND DATE DEFAULT, any existing quick order that needs to reflect that date change will need to be manually edited.

How can I see the list of existing quick orders that might need to change?

OR*3.0*389 (a prerequisite patch for OR*3.0*350) created and sent a mail message to the person that installed that patch. The message subject is: “CONSULT/PROCEDURE QOs EARLIEST APPROPRIATE DATE DEFAULT VALUE”. This mail message contains a list of all your site’s consult QOs that have a default value for the Earliest Appropriate Date. That message is intended as a reference item sites can use to edit any saved quick orders in light of the new parameter for Clinically Indicated Date.

6.7.2 Input Template Change

The INPUT TEMPLATE named GMRC SETUP REQUEST SERVICE has been re-exported by GMRC*3.0*81. As mentioned in the pre-install instructions for that patch, if your site had local modifications to this input template, they should be restored as soon as possible.

6.7.3 Local Data Objects Based on EARLIEST DATE

If your site has created any local data objects based on the EARLIEST DATE field, those objects will continue to function normally. However, it is likely that the displayed name/header for such an object would need to be updated to reflect that the underlying field name has changed from EARLIEST DATE to CLINICALLY INDICATED DATE.

6.8 OR MOB DLL VERSION parameter

The OrderCom dll has a new parameter. The purpose of this parameter is to store the latest version of the CPRS Med Order Button (MOB) DLL that is in use for compatibility check reasons.

The version 2.0.16.0 will be exported at the Package level.

```
Select PARAMETER DEFINITION NAME: OR MOB DLL VERSION      CPRS Med Order Button
D
LL version check

Values for OR MOB DLL VERSION

Parameter          Instance          Value
-----
PKG: ORDER ENTRY/RESULTS REPOR 1      2.0.16.0
```

6.9 One-Step Clinic Admin Setup Needed

There are two menu options that need to be added to the secondary menu option for those providers who will be using the One-Step Clinic: OR BCMA ORDER COM and PSB GUI CONTEXT – USER.

6.10 CPRS and MED Fix

In testing the Computerized Patient Record System (CPRS) v.30.b with the Mobile Electronic Documentation (MED) application, field testers discovered that Home-Based Primary Care (HBPC) providers were unable to properly upload their notes created in the field to CPRS. When executing the import feature in CPRS, the user would see:

“Library Not Registered” and/or “No Notes to Import”

This problem occurs because an issue with the libraries and the Windows registry. REDACTED has a resolution to this problem. Links to the document and a .cmd file are below:

- [MED Library Registry and Import feature fix for CPRS version 30b](#)
- [MED Fix v5.cmd](#)

7 CPRS v30 Production System Installation Checklist

The following activities should be completed in order.

Production System Installation		
1	Coordinate with appropriate personnel to prepare for installation into your production environment. Personnel might include region support staff, local Information Resource Management (IRM) staff, Clinical Application Coordinators (CACs), and other appropriate staff.	

2	<p>Confirm all Pre-requisite patches have been installed in your Production account:</p> <p>Please check your production system to verify that the following, previously released national patches are installed:</p> <ul style="list-style-type: none"> • GMPL*2*42 • GMPL*2*28 • GMPL*2*44 • GMRC*3*76 • GMRC*3*85 • GMTS*2.7*90 • GMTS*2.7*96 • LEX*2.0*86 • OR*3*121 • OR*3*157 • OR*3*311 • OR*3*312 • OR*3*317 • OR*3*318 • OR*3*322 • OR*3*341 • OR*3*348 • OR*3*349 • OR*3*356 • OR*3*363 • OR*3*366 • OR*3*374 • OR*3*385 • OR*3*388 • OR*3*389 • OR*3*392 • OR*3*394 • OR*3*418 • PSJ*3*267 • PSJ*5*311 • TIU*1*211 • TIU*1*239 • XU*8*609 	
3	Install patch TIU*1*268 in production .	

4	Install patch GMPL*2*47 in production.	
5	Install patch GMPL*2*45 in production.	
6	Install patch PSJ*5*307 in production.	
7	Install patch OR*3*350 in production.	
8	Install patch GMRV*5*28 in production.	
9	Install patch YS*5.01*116 in production.	
10	Unzip and Install the contents of MHA_501_116.ZIP in production.	
11	Unzip and install the contents of VITL5_P28.ZIP in production.	
12	Install patch XU*8*642 in production.	
13	Unzip and install the contents of XU_8_0_P641.ZIP in production.	
14	Install patch GMRC*3.0*81 in production.	
15	Install patch GMTS*2.7*112 in production.	
16	Install patch OR*3.0*424 in production.	
17	Install the items from the CPRS GUI installation package OR_30_350.zip, per the instructions in see ZIP File (OR_30_350.zip) in Production , and point user shortcuts to your Production system.	
18	Install the ePCS Data Entry for Prescriber GUI on APPROPRIATE workstations only in production.	
19	Install the Ordercom DLL in production.	
20	If you have not already, place the CPRS documentation in a location where CPRS users and support personnel can access it.	
21	Add the new ORDER DIALOGS to any appropriate order menus so that your users can place clinic orders, and supply orders.	
22	If you do not use the Package level for the ORWOR CATEGORY SEQUENCE parameter, create new Instances for this parameter in order for the new orders in the CLINIC MEDICATIONS, CLINIC INFUSION and SUPPLIES/DEVICES display groups to be labeled properly.	
23	Set the name of the correct version of the Mental Health DLL in the YS MHA_A_DLL_NAME Parameter in production.	
24	Review the ORWRP REPORT LAB LIST parameter in production to determine if you have set it at the System, Division or User level. If you have, then edit the parameter to add the new reports.	
25	Check the OR REPORT DATE TYPE parameter in production and set it for how your site wants the date selection to display on the Reports and Labs tabs in CPRS.	
26	If your site uses Dragon dictation software, add to the .ini file to ensure that Dragon works correctly with CPRS.	

27	Check the Consults Configuration in production and complete any set up necessary.	
28	Check the OR MOB DLL VERSION parameter in production to ensure it is the latest version of the Med Order button dynamic link library (DLL).	
29	For the appropriate users, complete the One-Step Clinic Admin setup in production .	
30	For workstations that use the Mobile Electronic Documentation (MED) software , make the necessary changes to make it work with CPRS 30.b.	
31	Check all your institutions to verify the Facility DEA # and Facility DEA # Expiration date is correct in the INSTITUTION file (#4).	
32	Verify the installation in your Production system has been successful. You can use the V30 Smoke Test Script.xls document to ensure that the patches have been installed correctly.	
33	Complete any additional verification in your production account.	

7.1 Additional Required Patches

7.1.1 TIU*1*268 in Production

This patch can be loaded with users in the system. Installation time will be less than 2 minutes.

1. From the Kernel Installation & Distribution System menu, select the Installation menu.
2. From this menu, choose to Load a Distribution and enter the location of the Host File TIU_1_268.KID. [XPD MAIN]:

```
Edits and Distribution ...
Utilities ...
Installation ...
```

Select Kernel Installation & Distribution System Option: Installation

```
1   Load a Distribution
2   Verify Checksums in Transport Global
3   Print Transport Global
4   Compare Transport Global to Current System
5   Backup a Transport Global
6   Install Package(s)
    Restart Install of Package(s)
    Unload a Distribution
```


3. From this menu, you may elect to use the following options (When prompted for the INSTALL NAME, enter "TIU*1.0*268"):
 - a. Backup a Transport Global - This option will create a backup message of any routines exported with this patch. It will not backup any other changes such as DD's or templates.
 - b. Compare Transport Global to Current System - This option will allow you to view all changes that will be made when this patch is installed. It compares all components of this patch (routines, DD's, templates, etc.).
 - c. Verify Checksums in Transport Global - This option will allow you to ensure the integrity of the routines that are in the transport global.

4. Use the Install Package(s) option and select the package.
 - a. When prompted "Want KIDS to INHIBIT LOGONs during the install? NO//", answer NO.
 - b. When prompted "Want to DISABLE Scheduled Options and Menu Options and Protocols? NO//", answer NO.

7.1.2 GMPL*2*47 in Production

Pre/Post Installation Overview:

In order to prevent hard errors and unnecessary Mailman messages from generating during the Clinical Reminder Problem file reindex process, Reminder Evaluations will be automatically disabled prior to indexing and re-enabled after successful completion. This entire process (indexing/disabling/enabling) will be tasked and automated in a post-installation routine (GMPY47).

****IMPORTANT NOTE**:** Once Reminder Evaluations are temporarily disabled, certain functional areas such as, the CPRS coversheet, Reminder Dialog Branching Logic, HS Report for Reminders, TIU/HS Objects for Reminders, and Reminder Order Checks will not function correctly.

Users trying to access these functional areas during the reindexing process, may receive various error/warning messages. For example, Reminder Dialogs will be turned off and display the following message: "Dialog is disable for reminder re-indexing". Reminder Order Checks will display the message: "Clinical Reminder evaluation is currently disabled; this order check cannot be processed". Coversheet Reminders will have a status of CNBD (Cannot Be Determined). HS Clinical Reminder components will either be blank or contain a status of CNBD.

Pre-Installation Instructions:

To ensure that the installer receives the appropriate notification messages in MailMan, please verify that the installer is added as a member to the mailgroup that is defined in the REMINDER MANAGEMENT MAILGROUP field #3 of the CLINICAL REMINDER PARAMETERS file #800.

Installation Instructions:

This patch loads several routines and may be installed with users on the system although it is recommended that it be installed during non-peak hours to minimize potential disruption to users. This patch should take less than 1 minute to install.

However depending on the size of your site's Problem file, it could take 1-1.5 hours for the reindexing process to complete. As an example, for a site that has 3 million entries in the Problem file, it took the reindexing process 1 hr to complete.

****IMPORTANT NOTE****: Given this information and the fact that reminder evaluations will be temporarily disabled, it is **STRONGLY RECOMMENDED** that at least 1-1.5 hrs. is allocated for the completion of the reindex and that this be installed during afterhours to minimize disruption to users.

1. From the Kernel Installation & Distribution System menu, select the Installation menu.
2. From this menu, choose to Load a Distribution and enter the location of the Host File GMPL_2_47.KID.
3. From the Kernel Installation and Distribution System Menu, select the Installation Menu. From this menu, you may elect to use the following options. When prompted for the INSTALL NAME enter the patch GMPL*2.0*47
 - a. Backup a Transport Global - This option will create a backup message of any routines exported with this patch. It will not backup any other changes such as DDs or templates.
 - b. Compare Transport Global to Current System - This option will allow you to view all changes that will be made when this patch is installed. It compares all components of this patch (routines, DDs, templates, etc.).
 - c. Verify Checksums in Transport Global - This option will allow you to ensure the integrity of the routines that are in the transport global.
4. From the Installation Menu, select the Install Package(s) option and choose the patch to install.

5. When prompted 'Want KIDS to INHIBIT LOGONs during the install? NO//', response with NO.
6. When prompted 'Want to DISABLE Scheduled Options, Menu Options, and Protocols? NO//', respond with NO.

Post-Installation Instructions:

The post-install routine will call a Reminders API to reindex and clean up any outstanding ACRMT indexes that didn't get disposed of appropriately. It will also create a new auxiliary cross-reference, ACRMTA, for the Mapping Target multiple.

The post-install routine will also automatically disable the reminder evaluations prior to executing the reindex process. A MailMan message should be generated to the installer and Clinical Reminder mailgroup confirming so:

Subj: REMINDER EVALUATION DISABLED [#68774] 08/21/15@12:37 13 lines
From: POSTMASTER (Sender: INSTALLER,ONE) In 'IN' basket. Page 1

Reminder evaluation was disabled on Aug 21, 2015@12:37:43.
Because of this, the following TaskMan jobs can produce erroneous results.
Pending jobs should not be allowed to start until evaluation is enabled.
The results of running jobs should be discarded and if possible, running jobs should be stopped.

Reason: index rebuild for file #9000011.

Reminders Due Report Jobs

Reminder Patient List Jobs

Reminder Extract Jobs

Once the reindexing process is complete, a Problem List Reindex Complete notification message should be generated to the installer and Reminder mailgroup indicating so. The below example is taken from a development account and does not accurately reflect actual production times.

Subj: Index for global ^AUPNPROB(successfully built [#68773]
08/21/15@12:37
5 lines

From: INSTALLER,ONE In 'IN' basket. Page 1

Build of Clinical Reminders index for global ^AUPNPROB(completed.
Build finished at 08/21/2015@12:37:44
131 entries were created.
Elapsed time: 1 secs
0 errors were encountered.

Once the reindexing process has successfully completed, the reminder evaluations will automatically be re-enabled. A MailMan message should be generated to the installer and Reminder mailgroup confirming so:

Subj: REMINDER EVALUATION ENABLED [#68775] 08/21/15@12:37 2 lines
From: POSTMASTER (Sender: INSTALLER,ONE) In 'IN' basket. Page 1

Reminder evaluation was enabled on Aug 21, 2015@12:37:55.
It was disabled on Aug 21, 2015@12:37:43.

7.1.3 GMPL*2*45 in Production

This patch may be installed with users on the system although it is recommended that it be installed during non-peak hours to minimize potential disruption to users. This patch should take less than 1 minute to install.

1. From the Kernel Installation & Distribution System menu, select the Installation menu.
2. From this menu, choose to Load a Distribution and enter the location of the Host File GMPL_2_45.KID
3. From the same menu, you may select to use the following options:
(when prompted for INSTALL NAME, enter GMPL*2.0*45)
 - a. Verify Checksums in Transport Global - This option will allow you to ensure the integrity of the routines that are in the transport global.
 - b. Print Transport Global - This option will allow you to view the components of the KIDS build.
 - c. Compare Transport Global to Current System - This option will allow you to view all changes that will be made when this patch is installed. It compares all components of this patch (routines, DD's, templates, etc.).

- d. Backup a Transport Global - This option will create a backup message of any routines exported with this patch. It will not backup any other changes such as DD's or templates.
4. Use the Install Package(s) option and select the package GMPL*2.0*45
 5. When Prompted "Want KIDS to INHIBIT LOGONs during the install? NO/" respond NO.
 6. When Prompted "Want to DISABLE Scheduled Options, Menu Options, and Protocols? NO/" respond NO.

7.1.4 PSJ*5*307 in Production

Pre/Post Installation Overview:

 This patch is being released as a part of the CPRS v30 phased release. Specific instructions on downloading the software will be distributed when your site is scheduled to install.

Pre-Installation Instructions:

 This patch may be installed with users on the system although it is recommended that it be installed during non-peak hours to minimize potential disruption to users. Specifically, this patch should not be installed during heavy usage times for Clinic Orders or BCMA Med Order Button orders. This patch should take less than 5 minutes to install.

Installation Instructions:

-
1. From the Kernel Installation & Distribution System menu, select the Installation menu.
 2. From this menu, choose to Load a Distribution and enter the location of the Host File PSJ_5_307.KID.
 3. From the Kernel Installation and Distribution System Menu, select the Installation Menu. From this menu, you may elect to use the following options. When prompted for the INSTALL NAME enter the patch PSJ*5.0*307
 - a. Backup a Transport Global - This option will create a backup message of any routines exported with this patch. It will not backup any other changes such as DDs or templates.
 - b. Compare Transport Global to Current System - This option will

allow you to view all changes that will be made when this patch is installed. It compares all components of this patch (routines, DDs, templates, etc.).

- c. Verify Checksums in Transport Global - This option will allow you to ensure the integrity of the routines that are in the transport global.
4. From the Installation Menu, select the Install Package(s) option and choose the patch to install.
5. When prompted 'Want KIDS to Rebuild Menu Trees Upon Completion of Install? NO//', respond NO.
6. When prompted 'Want KIDS to INHIBIT LOGONs during the install? NO//', respond NO.
7. When prompted 'Want to DISABLE Scheduled Options, Menu Options, and Protocols? NO//', respond NO.
8. If prompted 'Delay Install (Minutes): (0 - 60): 0//' respond 0.

7.1.5 OR*3*350 in Production

This patch should be loaded during non-peak hours to minimize disruption to users. Installation will take less than 1 minute. Users may remain on the system.

Note: When installing patch OR*3*350, sites may notice a message that shows that they are missing patch OR*3*237, but this is incorrect. The reason is that patch OR*3*243 did not list patch 237 although it should have. Patch OR*3*350 does list patch 237 in the second line as it should.

1. From the Kernel Installation & Distribution System menu, select the Installation menu.
2. From this menu, choose to Load a Distribution and enter the location of the Host File OR_30_350.KID.
3. From this menu, you may elect to use the following options
 - a. Backup a Transport Global
 - b. Compare Transport Global to Current System
 - c. Verify Checksums in Transport Global
4. Use the Install Package(s) options and select the package OR*3.0*350.
5. At the "Want to RUN the Environment Check Routine?", respond YES.
6. When prompted "Want KIDS to Rebuild Menu Trees Upon Completion of Install?", respond NO.
7. When prompted Please select the recipients for the NON-VA MEDICATION COMPLEX QUICK ORDER DIALOG REPORT below.

Send mail to:

Enter the name of person who should receive this report, such as a CAC at the site.

Select basket to send to:

Respond IN//.

7. When prompted 'Want KIDS to INHIBIT LOGONs during the install? NO//' respond NO.
8. When prompted 'Want to DISABLE Scheduled Options, Menu Options, and Protocols? NO//', respond NO.

7.1.6 GMRV*5*28 in Production

Installation Instructions:

=====

1. From the Kernel Installation & Distribution System menu, select the Installation menu.
2. From this menu, choose to Load a Distribution and enter the location of the Host File GMRV_5_28.KID.
3. Start up the Kernel Installation and Distribution System Menu [XPD MAIN]:

Edits and Distribution ...
Utilities ...
Installation ...

4. From this menu, you may elect to use the following options: (When prompted for the INSTALL NAME, enter GMRV*5.0*28):
 - a. Backup a Transport Global -This option will create a backup message of any routines exported with this patch. It will not backup any other changes such as DD's or templates.
 - b. Compare Transport Global to Current System - This option will allow you to view all changes that will be made when this patch is installed. It compares all components of this patch (routines, DD's, templates, etc.).
 - c. Verify Checksums in Transport Global - This option will allow you to ensure the integrity of the routines that are in the transport global.
5. Use the Install Package(s) option and select the package GMRV*5.0*28.
6. When prompted 'Want KIDS to INHIBIT LOGONs during the install? NO//', answer NO.
7. When prompted 'Want to DISABLE Scheduled Options and Menu Options and Protocols? NO//', answer NO.

7.1.7 YS*5.01*116 in Production

This patch may be installed with users on the system although it is recommended that it be installed during non-peak hours to minimize potential disruption to users. This patch should take less than 1 minute to install.

1. From the Kernel Installation & Distribution System menu, select the Installation menu.
2. From this menu, choose to Load a Distribution and enter the location of the Host File YS_501_116.KID
3. From the same menu, you may select to use the following options:
(when prompted for INSTALL NAME, enter YS*5.01*116)
 - a. Print Transport Global - This option will allow you to view the components of the KIDS build.
 - c. Compare Transport Global to Current System - This option will allow you to view all changes that will be made when this patch is installed. It compares all components of this patch (routines, DD's, templates, etc.).
4. Use the Install Package(s) option and select the package YS*5.01*116
5. When Prompted "Want KIDS to INHIBIT LOGONs during the install? NO//" respond NO.
6. When Prompted "Want to DISABLE Scheduled Options, Menu Options, and Protocols? NO//" respond NO.

7.1.8 XU*8*642 in Production

This patch may be installed with users on the system. This patch should take less than 1 minute to install. It may be queued for installation.

There are no options that need to be disabled.

1. From the Kernel Installation & Distribution System menu, select the Installation menu.
2. From this menu, choose to Load a Distribution and enter the location of the Host File XU8P642.KID.
3. From the Kernel Installation and Distribution System Menu, select the Installation Menu. From this menu, you may elect to use the following option. When prompted for the INSTALL enter the patch XU*8.0*642
 - a. Print Transport Global - This option lets you print the contents of a Transport Global that is currently loaded in the ^XTMP global.
 - b. Backup a Transport Global - This option will create a backup message of any routines exported with this patch. It will not backup any other changes such as DDs or templates.
 - c. Compare Transport Global to Current System - This option will allow you to view all changes that will be made when this patch is installed. It compares all components of this patch (routines, DDs, templates, etc.).
 - d. Verify Checksums in Transport Global - This option will allow you to ensure the integrity of the routines that are in the transport global.
4. From the Installation Menu, select the Install Package(s) option and choose the patch to install.
5. When prompted 'Want KIDS to Rebuild Menu Trees Upon Completion of Install? NO//' answer "NO".
6. When prompted 'Want KIDS to INHIBIT LOGONs during the install? NO//' answer "NO".
7. When prompted 'Want to DISABLE Scheduled Options, Menu Options, and Protocols? NO//' answer "NO".
8. If prompted 'Delay Install (Minutes): (0 - 60): 0//' answer "0".

7.1.9 GMRC*3.0*81 in Production

Pre/Post Installation Overview:

The pre-install will remove the current data dictionary for the REQUEST/CONSULTATION file (#123). The new data dictionary, containing the renamed CLINICALLY INDICATED DATE field, will be installed during the KIDS installation. There patch does not contain any automated post-install actions.

Pre-Installation Instructions:

This patch will overwrite the GMRC SETUP REQUEST SERVICE entry in the INPUT TEMPLATE file. If your site has made any local modifications to this input template, they should be captured prior to installing GMRC*3.0*81, and then restored soon after.

LOCAL OBJECTS BASED ON EARLIEST DATE

=====

If your site has created any local data objects based on the EARLIEST DATE field, those objects will continue to function normally. However, it is likely that the displayed name/header for such an object would need to be updated to reflect that the underlying field name has changed from EARLIEST DATE to CLINICALLY INDICATED DATE.

This patch may be installed with users on the system although it is recommended that it be installed during non-peak hours to minimize potential disruption to users. This patch should take less than 5 minutes to install.

1. From the Kernel Installation & Distribution System menu, select the Installation menu.
2. From this menu, choose to Load a Distribution and enter the location of the Host File GMRC_30_81.KID
3. From the same menu, you may select to use the following options:
(when prompted for INSTALL NAME, enter GMRC*3.0*81)
 - a. Verify Checksums in Transport Global - This option will allow you to ensure the integrity of the routines that are in the transport global.
 - b. Print Transport Global - This option will allow you to view

the components of the KIDS build.

- c. Compare Transport Global to Current System - This option will allow you to view all changes that will be made when this patch is installed. It compares all components of this patch (routines, DD's, templates, etc.).
- d. Backup a Transport Global - This option will create a backup message of any routines exported with this patch. It will not backup any other changes such as DD's or templates.

- 4. Use the Install Package(s) option and select the package GMRC*3.0*81
- 5. When Prompted "Want KIDS to INHIBIT LOGONs during the install? NO/" respond NO.
- 6. When Prompted "Want to DISABLE Scheduled Options, Menu Options, and Protocols? NO/" respond NO.

Post install instructions

If your site has local objects based on the EAD field, ensure that relevant end user displays are updated appropriately. Reference note above entitled LOCAL OBJECTS BASED ON EARLIEST DATE.

7.1.10 GMTS*2.7*112 in Production

Pre/Post Installation Overview:

This patch does not contain any automated pre-install actions. The post-install will add the missing components to the Patient Data Exchange (PDX) and also update the DESCRIPTION field of the Consults Brief health summary component (CNB).

Pre-Installation Instructions:

This patch may be installed with users on the system although it is recommended that it be installed during non-peak hours to minimize potential disruption to users. This patch should take less than 5 minutes to install.

- 1. From the Kernel Installation & Distribution System menu, select the Installation menu.
- 2. From this menu, choose to Load a Distribution and enter the

location of the Host File GMTS_27_112.KID

3. From the same menu, you may select to use the following options:
(when prompted for INSTALL NAME, enter GMTS*2.7*112)
 - a. Verify Checksums in Transport Global - This option will allow you to ensure the integrity of the routines that are in the transport global.
 - b. Print Transport Global - This option will allow you to view the components of the KIDS build.
 - c. Compare Transport Global to Current System - This option will allow you to view all changes that will be made when this patch is installed. It compares all components of this patch (routines, DD's, templates, etc.).
 - d. Backup a Transport Global - This option will create a backup message of any routines exported with this patch. It will not backup any other changes such as DD's or templates.
4. Use the Install Package(s) option and select the package GMTS*2.7*112
5. When Prompted "Want KIDS to INHIBIT LOGONs during the install? NO/" respond NO.
6. When Prompted "Want to DISABLE Scheduled Options, Menu Options, and Protocols? NO/" respond NO.

Post-Installation Instructions:

GMTSP112 may be deleted from the system once all patch functionality has been verified as working as expected. IT staff may choose to keep a copy of this routine for future reference.

7.1.11 OR*3.0*424 in Production

Installation Instructions

This patch may be installed with users on the system although it is recommended that it be installed during non-peak hours to minimize potential disruption to users. This patch should take less than 1 minute to install.

1. From the Kernel Installation & Distribution System menu, select the Installation menu.
2. From this menu, choose to Load a Distribution and enter the location of the Host File OR_30_424.KID.
3. From the Kernel Installation and Distribution System Menu, select the Installation Menu. From this menu, you may elect to use the following option. When prompted for the INSTALL enter the patch OR*3.0*424.
 - a. Print Transport Global - This option lets you print the contents of a Transport Global that is currently loaded in the ^XTMP global.
 - b. Backup a Transport Global - This option will create a backup message of any routines exported with this patch. It will not backup any other changes such as DDs or templates.
 - c. Compare Transport Global to Current System - This option will allow you to view all changes that will be made when this patch is installed. It compares all components of this patch (routines, DDs, templates, etc.).
 - d. Verify Checksums in Transport Global - This option will allow you to ensure the integrity of the routines that are in the transport global.
4. From the Installation Menu, select the Install Package(s) option and choose the patch to install: OR*3.0*424.
5. When prompted 'Want KIDS to INHIBIT LOGONs during the install? NO//' Answer 'NO'
6. When prompted 'Want to DISABLE Scheduled Options, Menu Options, and Protocols? NO//' Answer 'NO'

7.2 ZIP File (OR_30_350.zip) in Production

The ZIP file contains the CPRS GUI executable file as well as the DLLs associated with 30B, Vitals, Mental Health and One-Step Clinic Admin.

Download the ZIP file and extract all the files.

Placement of DLLs:

The DLLs are no longer required to reside on individual workstations. For example, if you are doing a network install of the CPRSChart executable, you can place the DLLs in that same directory.

NOTE: *Some sites have experienced unacceptable delays in launching the DLLs if they are located on the server. If this occurs, the DLLs should be placed on the local workstations.*

Here is the hierarchy the CPRS GUI uses to search for the DLLs:

1. The same folder as the application
2. A “Common Files\” folder in the same folder as the application
3. Windows 7:
 - For 64 bit machines: “C:\Program Files (x86)\Vista\Common Files”
 - For 32 bit machines: “C:\Program Files\Vista\Common Files”

7.3 GMV_VitalsViewEnter.dll

*******IMPORTANT NOTE*******

If possible, it is simpler for the users that are testing the new Vitals DLL to install it on a workstation that is never used for entering Vitals for the production system. If it is necessary to install on a machine that will be used for entering Vitals in production, the user will have to replace the new DLL with the current released version whenever it is necessary to enter Vitals in production.

.....

7.3.1 Manual Installation

Unzip the VITL5_P28.ZIP file and move the files to an appropriate directory and/or workstations.

Windows 7:

- For 64 bit machines: “C:\Program Files (x86)\Vista\Common Files”
- For 32 bit machines: “C:\Program Files\Vista\Common Files”

Note: You may need to have a user with Administrator rights complete this step.

If you are running the Vitals Lite DLL files from individual workstations and you want to push the files using SCCM, you should include the files from the VITL5_P28.zip in your script.

7.3.2 MSP Installation

The Vitals DLL will be included in the v30 MSP file. But, for test installations, it is expected you will be using the manual installation.

7.4 YS_MHA_A_XE3.DLL

7.4.1 Manual Installation

Unzip the MHA_501_116.ZIP file and move the files to an appropriate directory and/or workstations.

Windows 7:

- For 64 bit machines: “C:\Program Files (x86)\Vista\Common Files”
- For 32 bit machines: “C:\Program Files\Vista\Common Files”

Note: You may need to have a user with Administrator rights complete this step.

7.4.2 MSP Installation

The Mental Health DLL will be included in the v30 MSP file. But, for test installations, it is expected you will be using the manual installation.

7.5 CPRS GUI Executable Methods of installation

The following methods of installation of CPRS are available. Sites' choice of which method(s) to use will depend upon Regional/VISN policies, Local Area Network (LAN) performance or other local circumstances. User requirements, physical location and methods of connection to the VA network may warrant more than one of the options below to be used.

7.5.1 Network (Shared) Installation

This method is typically the simplest to maintain, providing the local network infrastructure is robust enough to handle the additional traffic caused by users running the GUI executable (CPRSChart.exe) across the LAN.

The GUI executable (CPRSChart.exe), and ancillary files (DLLs, Help files etc.), are copied to a network shared location. Users are provided with a desktop shortcut to run CPRSChart.exe directly from the network shared drive. The necessary command line parameters (Vista server address or name and RPC Broker Port number) are entered in the “Target” field of the shortcut properties

At the time of a CPRS version update the copy of CPRSChart.exe (and any updated ancillary files) is simply replaced, on the network share, with the new version.

Any users requiring access to another site's CPRS system can be given an alternate desktop shortcut with command line parameters appropriate to the intended target Vista system.

If a user requires access to an older or newer version of CPRS (e.g. during a phased deployment, when sites are temporarily not all on the same version, or for testing purposes) a different version of CPRSChart.exe can be placed in a separate network location and the user be supplied with an appropriate alternate shortcut (different Target path and different Vista server command line parameters).

Note: The version of CPRSChart a user executes must always match the patch-level version of the Vista system targeted.

7.5.2 Citrix installation

The GUI executable (CPRSChart.exe) and ancillary files (DLLs, Help files etc.) are installed and run from a remote workstation, and the user views the remote workstation's screen on their local workstation.

For the local site users, this method is on a similar level to the Network (shared) installation above. The users' workstations require only an appropriate shortcut (and the necessary Citrix Access Group (CAG) infrastructure).

For the Citrix Farm administrator, this method involves installations on the host in a similar manner to either the Gold Path or the Direct Access methods outlined below.

During a phased deployment of a new version of CPRS, if a Citrix Farm is serving users who are scheduled to deploy at different times, the Farm administrator may be required to temporarily maintain hosts with both the old and the new versions of CPRSChart.exe available.

7.5.3 Gold Path installation

This is the “standard” method of installation where the GUI executable (CPRSChart.exe), and ancillary files (DLLs, Help files etc.), are installed on and run from the user's local workstation. In normal day-to-day operation, the user's shortcut executes a locally installed copy of CPRSLoader.exe which looks in a pre-configured network “Gold Path” (specified in a command line parameter) to see if there is a later version of CPRSChart.exe ready to be installed. If not, then execution passes to the locally installed version of CPRSChart.exe. If an updated version is found on the Gold Path, then a silent installation of the new version takes place, following which the newly installed version of CPRSChart.exe is executed on the local workstation.

This method of installation initially requires the distribution and installation of a Microsoft Software Installation (MSI) file (CPRSLoader.msi) to each user's workstation, typically accomplished via SCCM. This is outside the scope of CPRS development and is normally handled by Enterprise Software Engineering (ESE) Desktop Services in coordination with Regional COR Client Technologies leadership.

The CPRSChart.exe component of the update is held in a Microsoft Software Patch (MSP) file (CPRSChart.msp) which is copied to the network Gold Path location—that should be all that is required for a normal CPRS version update for sites using this method. The exception is if a new version of CPRS Loader is also being released, in which case the cycle begins again with the distribution to users' workstations of the new CPRSLoader.msi (before the new CPRSChart.msp is copied to the network Gold Path)—this is the circumstance in which CPRS v30b is being released.

The CPRS deployment software distribution will include an appropriate version of the CPRS Microsoft patch file (named CPRS_XX_YY.msp, where XX is the current version number for CPRS, and YY is the current build number. At this point the current file name is CPRS_30_72.msp). This file has the named version of CPRSChart embedded within it, along with any updated ancillary files. Also included in the deployment software distribution will be a .VER file. This file will have the same name as the MSP file, with only the file extension changed. As an example, the .VER file for CPRS_30_72.MSP will be named CPRS_30_72.VER. To be effective, the .VER file must be placed in the same Gold Path in which the .MSP file was placed. The .VER is optional but beneficial. It will allow the CPRS loader to much more quickly find an appropriate version of CPRSChart.exe for use with the

current Vista system. Including the VER file in the Gold Path can shorten CPRS start times from several minutes to just a few seconds.

For the convenience of local System Administrators, the file CPRSLoader.msi is also included in the release package, in case they need to manually install it on a workstation.

7.5.4 Direct Access to a Local Copy of CPRSChart.exe (bypassing the loader)

In cases where a site's network performance is weak enough that CPRSLoader.exe, in checking the Gold Path every time a user starts CPRS, introduces unacceptable delays, some sites have elected to by-pass CPRSLoader.exe altogether and have user's shortcuts point directly to a local installation of CPRSChart.exe. The downside to this approach is that a future release of CPRSChart.exe will not be automatically picked up from the Gold Path by that workstation and the new CPRSChart.exe (plus any additional changed DLLs and Help files) will need to be pushed out to workstations by other means, such as a custom SCCM package.

An alternative, hybrid, version of this method would be to have two shortcuts for the users: One, for day-to-day use, which points directly to the local CPRSChart.exe and a second, to be used only for updating, which points to CPRSLoader.exe.

7.5.5 Manual installation

Manual installation of CPRSChart.exe on an individual workstation may be necessary for troubleshooting, testing or other unconventional circumstances.

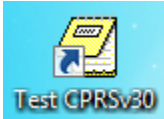
This information may also be useful to any sites choosing the “Direct access” method above, if they are not using the hybrid option described at the end of that section.

1. Locate the OR_30_350.ZIP and unzip the file.
2. If this is an installation for a conventional, day-to-day CPRS user, then Copy CPRSChart.exe to C:\Program Files (x86)\CPRS\.

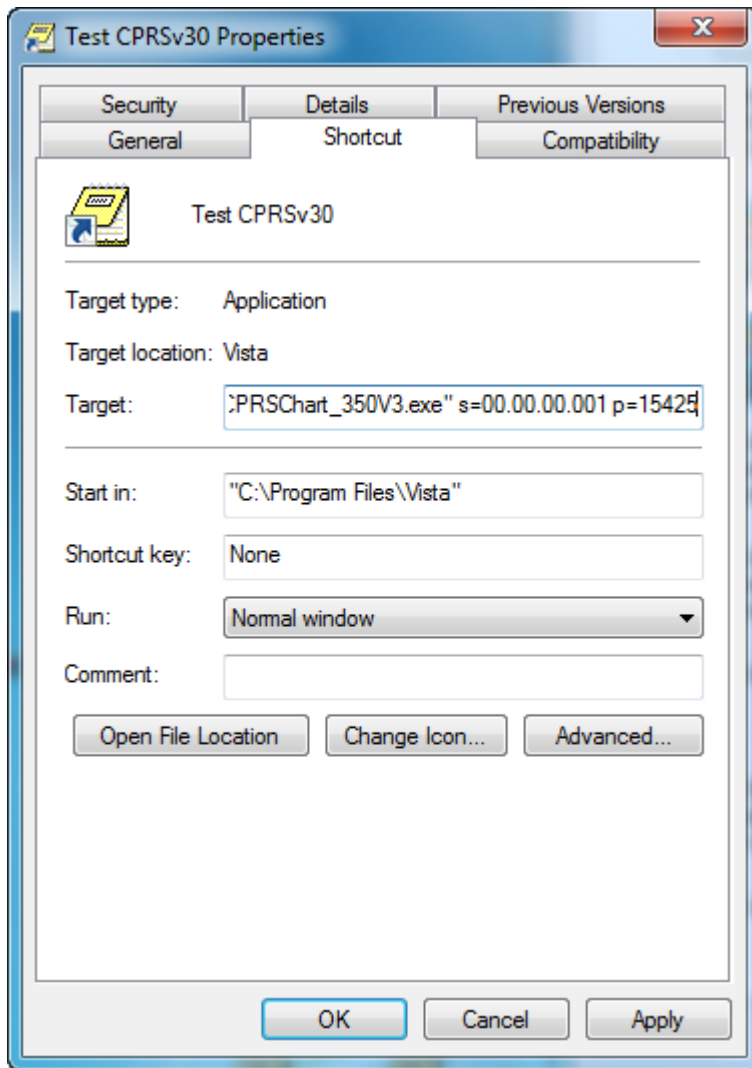
If this is an installation for a secondary use (e.g. testing or accessing a different version of CPRS), then copy CPRSChart.exe to a different location than the conventional path above (e.g. "C:\Program Files (x86)\CPRSTest" or other appropriate naming).

Note: You may need to have a user with local machine Administrator rights complete this step.

3. Create a Shortcut and name appropriately for the version or system being accessed, e.g. something like, “Test CPRSv30b” would give the user a clear indication that this is not the normal CPRS icon.



4. Copy the borlandmm.dll file **into the same directory** as CPRSChart.exe as chosen in step 2.
 5. Determine the DNS server name or IP address for the appropriate VistA server.
 6. Determine the Broker RPC port for the VistA account.
 7. Enter IP and RPC port in the Target field of the Shortcut properties (or use ServerList.exe).
- Note:** There is an issue currently with ServerList on some machines and the preferred method is to put the parameters in the shortcut as shown in the following graphic.



Example of what the shortcut properties dialog might look like.

The server and port number shown above are not real and are for example only.

7.6 Order Com DLL installation

The OrderCom.dll file was part of the OR_30_350.ZIP file from step 5.2.

7.6.1 Manual Installation

1. Locate the OrderCom.dll file.
2. Copy the OrderCom.dll file to the Vista\Common File directory.

Windows 7:

- For 64 bit machines: “C:\Program Files (x86)\Vista\Common Files”
- For 32 bit machines: “C:\Program Files\Vista\Common Files”

Note: You may need to have a user with Administrator rights complete this step.

7.7 ePCSDDataEntryForPrescriber Installation

Note: This software should only be installed on the workstations of those who configure providers’ information regarding electronic prescribing of controlled substances.

Unzip the XU_8_0_P641.ZIP file.

7.7.1 Manual Installation

1. Locate the ePCSDDataEntryForPrescriber.exe file.
2. Copy the ePCSDDataEntryForPrescriber.exe file to the Vista\Common File directory.

Windows 7:

- For 64 bit machines: “C:\Program Files (x86)\Vista\Common Files”
- For 32 bit machines: “C:\Program Files\Vista\Common Files”

Note: You may need to have a user with Administrator rights complete this step.

7.8 CPRS Documentation

The documentation for the CPRS 30.B release is listed below.

Table 4 CPRS v30.b documentation

File Name	Description
cprsguium.doc	CPRS User Guide in Word format
cprsguium.pdf	CPRS User Guide in Acrobat format
cprslmtm.doc	CPRS Technical Manual in Word format
cprslmtm.pdf	CPRS Technical Manual in Acrobat format
cprsguitm.doc	CPRS GUI Technical Manual in Word format
cprsguitm.pdf	CPRS GUI Technical Manual in Acrobat format

or_30_350_rn.doc	CPRS GUI v30.b Release Notes in Word format
or_30_350_rn.pdf	CPRS GUI v30.b Release Notes in Acrobat format
or_30_350_ig.doc	CPRS GUI v30.b Installation Guide in Word format (this document)
or_30_350_ig.pdf	CPRS GUI v30.b Installation Guide in Acrobat format

8 Post Install Instructions

8.1 New Order Dialogs

The following ORDER DIALOG entries have been exported in patch OR*3*350:

Order Dialog - Name	Order Dialog – Display Text
CLINIC OR PAT FLUID OE	Clinic Infusions
PSJ OR CLINIC OE	Clinic Medications
PSO SUPPLY	Supplies

These new ORDER DIALOGS will need to be added to any appropriate order menus at your site so that your users can place these types of orders.

8.2 ORWOR CATEGORY SEQUENCE Parameters

The Parameter ORWOR CATEGORY SEQUENCE defines for a site the order of display groups for orders on the Orders tab of CPRS. In order for the new orders in the CLINIC MEDICATIONS, CLINIC INFUSION and SUPPLIES/DEVICES display groups to be labeled properly, new sequence values must be entered as new Instances for this parameter. The Package level parameter has been exported with the new instance/values for these two new display groups as shown in the table below.

Parameter	Instance	Value
-----	-----	-----
PKG: ORDER ENTRY/RESULTS REPOR	5	NON VA MEDS
PKG: ORDER ENTRY/RESULTS REPOR	10	M.A.S.
PKG: ORDER ENTRY/RESULTS REPOR	20	ALLERGIES
PKG: ORDER ENTRY/RESULTS REPOR	30	VITALS/MEASUREMENTS
PKG: ORDER ENTRY/RESULTS REPOR	35	ACTIVITY
PKG: ORDER ENTRY/RESULTS REPOR	40	NURSING
PKG: ORDER ENTRY/RESULTS REPOR	50	DIETETICS
PKG: ORDER ENTRY/RESULTS REPOR	59	CLINIC INFUSIONS
PKG: ORDER ENTRY/RESULTS REPOR	60	IV MEDICATIONS

PKG: ORDER ENTRY/RESULTS REPOR 65 MEDICATIONS	OUTPATIENT
PKG: ORDER ENTRY/RESULTS REPOR 68	NON-VA MEDICATIONS
PKG: ORDER ENTRY/RESULTS REPOR 69	CLINIC MEDICATIONS
PKG: ORDER ENTRY/RESULTS REPOR 70 MEDICATIONS	INPATIENT
PKG: ORDER ENTRY/RESULTS REPOR 75	LABORATORY
PKG: ORDER ENTRY/RESULTS REPOR 80	IMAGING
PKG: ORDER ENTRY/RESULTS REPOR 90	CONSULTS
PKG: ORDER ENTRY/RESULTS REPOR 100	PROCEDURES
PKG: ORDER ENTRY/RESULTS REPOR 110	SURGERY
PKG: ORDER ENTRY/RESULTS REPOR 120 SERVICES	OTHER HOSPITAL
PKG: ORDER ENTRY/RESULTS REPOR 130	SUPPLIES/DEVICES

However, if your site has system or user level sequences defined then these display groups will need to be manually placed in your custom sequences based upon your sites discretion. Below is an example of adding these display groups to the sequence:

```

<TEST ACCOUNT> LV List Values for a Selected Parameter
<TEST ACCOUNT> LE List Values for a Selected Entity
<TEST ACCOUNT> LP List Values for a Selected Package
<TEST ACCOUNT> LT List Values for a Selected Template
<TEST ACCOUNT> EP Edit Parameter Values
<TEST ACCOUNT> ET Edit Parameter Values with Template
<TEST ACCOUNT> EK Edit Parameter Definition Keyword

You have PENDING ALERTS
Enter "VA to jump to VIEW ALERTS option

Select General Parameter Tools <TEST ACCOUNT> Option: EP Edit
Parameter Values
--- Edit Parameter Values ---

Select PARAMETER DEFINITION NAME: ORWOR CATEGORY SEQUENCE Orders
Category S
equence

ORWOR CATEGORY SEQUENCE may be set for the following:

4 User USR [choose from NEW PERSON]
8 System SYS [TEST.CLEVELAND.MED.VA.GOV]
10 Package PKG [ORDER ENTRY/RESULTS REPORTING]

Enter selection: 8 System TEST.CLEVELAND.MED.VA.GOV

--- Setting ORWOR CATEGORY SEQUENCE for System:
TEST.CLEVELAND.MED.VA.GOV ---
Select Sequence: 91

```

```

Are you adding 91 as a new Sequence? Yes//  YES

Sequence: 91//  91
Display Group: CLINIC
  1  CLINIC INFUSIONS
  2  CLINIC INJECTIONS
  3  CLINIC MEDICATIONS
  4  CLINIC ORDERS
CHOOSE 1-4: 3  CLINIC MEDICATIONS
Select Sequence: 92
Are you adding 92 as a new Sequence? Yes//  YES

Sequence: 92//  92
Display Group: CLINIC
  1  CLINIC INFUSIONS
  2  CLINIC INJECTIONS
  3  CLINIC MEDICATIONS
  4  CLINIC ORDERS
CHOOSE 1-4: 1  CLINIC INFUSIONS
Select Sequence:

```

8.3 YS MHA_A DLL NAME Parameter

The Mental Health DLL has a new parameter. The purpose of this parameter is to allow you to specify the name of the DLL file associated with the Mental Health application. This allows both the current version and the new version of the Mental Health DLL to co-exist on a user's workstation during the time that it is being tested prior to production availability.

For your test account, you will set this parameter to the name of the new DLL distributed with CPRS v30b.

```

Select PARAMETER DEFINITION NAME: YS MHA_A DLL NAME      Name of the YS_MHA_A
dll to use

----- Setting YS MHA_A DLL NAME  for System: CPRS30.FO-SLC.MED.VA.GOV -----
DLL NAME: YS_MHA_A_XE3.DLL//

```

8.4 New Reports on Labs Tab

Three new reports have been added in CPRS v30B. They are exported at the Package level in the parameter: ORWRP REPORT LAB LIST.

You will need to review the parameter to determine if you have set the System, Division or User level. If you have, then the new reports will not be available until you edit the parameter.

The three new reports are:

ORRPL LAB OVERVIEW

ORRPL LAB ORDERS PEND

ORRPL LAB ORDERS ALL

8.5 OR REPORT DATE SELECT TYPE Parameter

This parameter, which accepts both Division and System level settings, will define how date selection is displayed. A 'YES' will change the Reports and Labs Tabs in CPRS to use Radio buttons to make selections rather than from a list.

8.6 Update for Dragon Dictation Software

There is an issue with dictating notes using Dragon dictation software. It is expected that the vendor will make a change to correct this problem in a future release. To address this issue until that release, an edit will need to be made in a Dragon configuration file as shown below.

Edit C:\ProgramData\Nuance\NaturallySpeaking12\nsapps.ini and add the following four lines for dictation into CPRS 30B:

```
[CPRSChart]
App Support GUID={dd100104-6205-11cf-ae61-0000e8a28647}
[CPRSChart\Enable Class Names]
TRichEdit=4
```

8.7 Consults Setup

8.7.1 Parameter Update

The ORCDGMRC EARLIEST DATE DEFAULT parameter has been replaced by a new parameter, ORCDGMRC CLIN IND DATE DEFAULT. This is the parameter that controls the default value for the "Clinically indicated date" field on the generic consult and procedure order dialogs of CPRS GUI and also any new consult quick orders. The ORCDGMRC EARLIEST DATE DEFAULT parameter was restricted to a PACKAGE level value. The ORCDGMRC CLIN IND DATE DEFAULT parameter allows for DIVISION, SYSTEM, and PACKAGE.

ORCDGMRC CLIN IND DATE DEFAULT is being exported with a PACKAGE level value of NULL. A null value will provide default behavior that forces a provider to actively choose a date when placing consult/procedure orders.

Possible Site Set Up

Sites may want to adjust the defined dates for the following:

- The default date for the "Clinically Indicated Date" for consults and procedures dialogs
- The date used in existing quick orders

Need to Change Default Clinically Indicated Date Value?

During the OR*3.0*350 post-install, the PACKAGE level value for the ORCDGMRC EARLIEST DATE DEFAULT parameter was captured and then set into the SYSTEM level value for the ORCDGMRC

CLIN IND DATE DEFAULT parameter. If your site wishes to view or edit the ORCDGMRC CLIN IND DATE DEFAULT parameter, use the new option Consults Clinically Indicated Date Default [ORW CLIN IND DATE DFLT] found on the CPRS Configuration (Clin Coord) [OR PARAM COORDINATOR MENU] menu.

Changing the Date for Existing Quick Orders

NOTE: Saved quick orders and the date parameter.

Existing quick orders do not automatically update if the value for the Clinically indicated date parameter is changed. If your site decides to change the date value for OCDGMRC CLIN IND DATE DEFAULT, any existing quick order that needs to reflect that date change will need to be manually edited.

How can I see the list of existing quick orders that might need to change?

OR*3.0*389 (a prerequisite patch for OR*3.0*350) created and sent a mail message to the person that installed that patch. The message subject is: “CONSULT/PROCEDURE QOs EARLIEST APPROPRIATE DATE DEFAULT VALUE”. This mail message contains a list of all your site’s consult QOs that have a default value for the Earliest Appropriate Date. That message is intended as a reference item sites can use to edit any saved quick orders in light of the new parameter for Clinically Indicated Date.

8.7.2 Input Template Change

The INPUT TEMPLATE named GMRC SETUP REQUEST SERVICE has been re-exported by GMRC*3.0*81. As mentioned in the pre-install instructions for that patch, if your site had local modifications to this input template, they should be restored as soon as possible. For use as a local reference, OR*3.0*389 creates a mail message containing a list of all consult quick orders that have a value stored for the Clinically Indicated Date (previously known as the Earliest Appropriate Date).

8.7.3 Local Data Objects Based on EARLIEST DATE

If your site has created any local data objects based on the EARLIEST DATE field, those objects will continue to function normally. However, it is likely that the displayed name/header for such an object would need to be updated to reflect that the underlying field name has changed from EARLIEST DATE to CLINICALLY INDICATED DATE.

8.8 OR MOB DLL VERSION parameter

The OrderCom DLL has a new parameter. The purpose of this parameter is to store the latest version of the CPRS Med Order Button (MOB) DLL that is in use for compatibility check reasons.

The version 2.0.16.0 will be exported at the Package level.

Select PARAMETER DEFINITION NAME: OR MOB DLL VERSION		CPRS Med Order Button
D		
LL version check		
Values for OR MOB DLL VERSION		
Parameter	Instance	Value

PKG: ORDER ENTRY/RESULTS REPOR 1		2.0.16.0

8.9 One-Step Clinic Admin Setup Needed

There are two menu options that need to be added to the secondary menu option for those providers who will be using the One-Step Clinic: OR BCMA ORDER COM and PSB GUI CONTEXT – USER.

8.10 CPRS and MED Fix

In testing the Computerized Patient Record System (CPRS) v.30.b with the Mobile Electronic Documentation (MED) application, field testers discovered that Home-Based Primary Care (HBPC) providers were unable to properly upload their notes created in the field to CPRS. When executing the import feature in CPRS, the user would see:

“Library Not Registered” and/or “No Notes to Import”

This problem occurs because an issue with the libraries and the Windows registry. **REDACTED** has a resolution to this problem. Links to the document and a .cmd file are below:

- [MED Library Registry and Import feature fix for CPRS version 30b](#)
- [MED Fix .cmd file fix](#)

Appendices

A. CPRS v30 M patches—Software Installation Samples

1 TIU*1*268 Install Capture

```
Setting up programmer environment
This is a TEST account.

Terminal Type set to: C-VT320

You have 198 new messages.
Select OPTION NAME: XPD MAIN          Kernel Installation & Distribution System

    Edits and Distribution ...
    Utilities ...
    Installation ...
    Patch Monitor Main Menu ...

Select Kernel Installation & Distribution System <TEST ACCOUNT> Option:
INSTallation

    1      Load a Distribution
    2      Verify Checksums in Transport Global
    3      Print Transport Global
    4      Compare Transport Global to Current System
    5      Backup a Transport Global
    6      Install Package(s)
           Restart Install of Package(s)
           Unload a Distribution

Select Installation <TEST ACCOUNT> Option: 1 Load a Distribution
Enter a Host File: _$1$DGA104:[HSDD.CPRS30]TIU_1_268V26.KID

KIDS Distribution saved on Sep 08, 2015@09:19:12
Comment: TIU*1.0*268 v26

This Distribution contains Transport Globals for the following Package(s):
    TIU*1.0*268
Distribution OK!

Want to Continue with Load? YES//
Loading Distribution...

    TIU*1.0*268
Use INSTALL NAME: TIU*1.0*268 to install this Distribution.

    1      Load a Distribution
    2      Verify Checksums in Transport Global
```

```
3      Print Transport Global
4      Compare Transport Global to Current System
5      Backup a Transport Global
6      Install Package(s)
      Restart Install of Package(s)
      Unload a Distribution

Select Installation <TEST ACCOUNT> Option: Install Package(s)
Select INSTALL NAME:      TIU*1.0*268      9/18/15@15:29:02
      => TIU*1.0*268 v26      ;Created on Sep 08, 2015@09:19:12

This Distribution was loaded on Sep 18, 2015@15:29:02 with header of
      TIU*1.0*268 v26      ;Created on Sep 08, 2015@09:19:12
      It consisted of the following Install(s):
      TIU*1.0*268
Checking Install for Package TIU*1.0*268

Install Questions for TIU*1.0*268

Want KIDS to INHIBIT LOGONS during the install? NO//
Want to DISABLE Scheduled Options, Menu Options, and Protocols? NO//

Enter the Device you want to print the Install messages.
You can queue the install by enter a 'Q' at the device prompt.
Enter a '^' to abort the install.

DEVICE: HOME// ;;9999 TELNET PORT
-----

Install Started for TIU*1.0*268 :
      Sep 18, 2015@15:29:17

Build Distribution Date: Sep 08, 2015

Installing Routines:
      Sep 18, 2015@15:29:17

Installing PACKAGE COMPONENTS:

Installing REMOTE PROCEDURE
      Sep 18, 2015@15:29:17

Updating Routine file...

Updating KIDS files...

TIU*1.0*268 Installed.
      Sep 18, 2015@15:29:17

Not a production UCI

Install Completed
```

2 GMPL*2.0*47 Install Capture

```
Install Started for GMPL*2.0*47 :  
    Dec 18, 2014@14:37:02  
  
Build Distribution Date: Dec 18, 2014  
  
Installing Routines:  
    Dec 18, 2014@14:37:02  
  
Running Post-Install Routine: POST^GMPLY47  
  
Creating Problem List Mapping Targets auxiliary cross-reference.  
Problem List Clinical Reminders Index rebuild queued.  
The task number is 36789.  
  
Updating Routine file...  
  
Updating KIDS files...  
  
GMPL*2.0*47 Installed.  
    Dec 18, 2014@14:37:02  
  
Not a production UCI  
  
NO Install Message sent
```

3 GMPL*2.0*45 Install Capture

```
Install Started for GMPL*2.0*45 :  
    Aug 27, 2014@14:52:47  
  
Build Distribution Date: Aug 27, 2014  
  
Installing Routines:  
    Aug 27, 2014@14:52:47  
  
Installing Data Dictionaries:  
    Aug 27, 2014@14:52:47  
  
Installing PACKAGE COMPONENTS:  
  
Installing PROTOCOL  
    Aug 27, 2014@14:52:47  
  
Updating Routine file...  
  
Updating KIDS files...  
  
GMPL*2.0*45 Installed.  
    Aug 27, 2014@14:52:47  
  
Not a production UCI  
  
NO Install Message sent
```


5 OR*3*350 Install Capture

```
CHEYL43>d ^XUP

Setting up programmer environment
This is a TEST account.

Terminal Type set to: C-VT100

You have 2 new messages.
Select OPTION NAME: XPD MAIN      Kernel Installation & Distribution System

    Edits and Distribution ...
    Utilities ...
    Installation ...
    Patch Monitor Main Menu ...

Select Kernel Installation & Distribution System <TEST ACCOUNT> Option:
Installation

    1      Load a Distribution
    2      Verify Checksums in Transport Global
    3      Print Transport Global
    4      Compare Transport Global to Current System
    5      Backup a Transport Global
    6      Install Package(s)
           Restart Install of Package(s)
           Unload a Distribution

Select Installation <TEST ACCOUNT> Option: LOAD a Distribution
Enter a Host File: /home/sftp/or_30_350v55.kid

KIDS Distribution saved on Dec 21, 2013@13:20:50
Comment: CPRS30V8 KIDS BUILD

This Distribution contains Transport Globals for the following Package(s):
    OR*3.0*350
Distribution OK!

Want to Continue with Load? YES//
Loading Distribution...

Build OR*3.0*350 has an Environmental Check Routine
Want to RUN the Environment Check Routine? YES//
    OR*3.0*350
Will first run the Environment Check Routine, ORY350E

Use INSTALL NAME: OR*3.0*350 to install this Distribution.

    1      Load a Distribution
    2      Verify Checksums in Transport Global
    3      Print Transport Global
    4      Compare Transport Global to Current System
    5      Backup a Transport Global
    6      Install Package(s)
           Restart Install of Package(s)
           Unload a Distribution
```



```

Select Installation <TEST ACCOUNT> Option: Install Package(s)
Select INSTALL NAME: OR*3.0*350      8/28/13@15:37:22
      => CPRS30V8 KIDS BUILD ;Created on Aug 21, 2013@13:20:50

This Distribution was loaded on Aug 28, 2013@15:37:22 with header of
      CPRS30V8 KIDS BUILD ;Created on Aug 21, 2013@13:20:50
It consisted of the following Install(s):
      OR*3.0*350
Checking Install for Package OR*3.0*350
Will first run the Environment Check Routine, ORY350E

Install Questions for OR*3.0*350

Incoming Files:

      101.24      OE/RR REPORT (including data)
Note: You already have the 'OE/RR REPORT' File.
I will REPLACE your data with mine.

Want KIDS to Rebuild Menu Trees Upon Completion of Install? NO//

      *** NON-VA MEDICATION COMPLEX QUICK ORDER DIALOG REPORT QUESTIONS ***

The post-install will create the NON-VA MEDICATION COMPLEX QUICK ORDER DIALOG
REPORT, which contains non-VA medication quick orders with a complex dosage.
The installer is strongly encouraged to include the site's local Clinical
Application Coordinators (CACs) as recipients of this report.

Please select the recipients for the NON-VA MEDICATION COMPLEX QUICK ORDER
DIALOG REPORT below.
Send mail to: SERVICE,JOHN//      SERVICE,JOHN
Select basket to send to: IN//
And Send to:

      *** SUPPLY ORDERABLE ITEM REPORT QUESTIONS ***

The post-install will create the SUPPLY ORDERABLE ITEM REPORT, which contains
orderable items that resolve to a pharmacy supply item. For each orderable
item,
the report lists the quick order dialogs that reference that orderable item, as
well as the reminder dialogs and definitions that reference either the
orderable
item or the quick order that references the orderable item.
The installer is strongly encouraged to include the site's local Clinical
Application Coordinators (CACs) as recipients of this report.

Do you want the NON-VA MEDICATION COMPLEX QUICK ORDER DIALOG REPORT
recipients to also receive the SUPPLY ORDERABLE ITEM REPORT? YES//

Want KIDS to INHIBIT LOGONs during the install? NO//
Want to DISABLE Scheduled Options, Menu Options, and Protocols? NO//

Enter the Device you want to print the Install messages.
You can queue the install by enter a 'Q' at the device prompt.
Enter a '^' to abort the install.

DEVICE: HOME//      HOME      (CRT)
-----

Install Started for OR*3.0*350 :
      Aug 28, 2013@15:37:55

```

```
Build Distribution Date: Aug 21, 2013

Installing Routines:
    Aug 28, 2013@15:37:55

Running Pre-Install Routine: PRE^ORY350

Converting ORDER DIALOG OR GTX EARLIEST DATE to OR GTX CLINICALLY INDICATED
DATE
Requested Start Time: NOW// (NOV 11, 2015@09:52:26)

Installing Data Dictionaries:
    Aug 28, 2013@15:37:55

Installing Data: .
    Aug 28, 2013@15:37:56

Installing PACKAGE COMPONENTS:

Installing REMOTE PROCEDURE

Installing OPTION

Installing PARAMETER DEFINITION
    Aug 28, 2013@15:38:27

Running Post-Install Routine: POST^ORY350

Updating parameter values...

Setting default value of parameter ORQQPL SUPPRESS CODES to YES

Error setting parameter:

DONE

Correcting supply orderable items...

DONE

Correcting supply quick orders...

DONE

Queueing order cleanup/conversion...

DONE - Task #290113

Queueing quick order dialog report...

DONE - Task #290114

Queueing supply orderable item report...

DONE - Task #290115

Correcting existing order dialogs...

DONE

Loading new notifications...
    LAPSED UNSIGNED ORDER
```

```
OP NON-RENEWABLE RX RENEWAL

DONE

Updating Routine file...

Updating KIDS files...

OR*3.0*350 Installed.
      Aug 28, 2013@15:39:07

Not a production UCI

Install Completed

1      Load a Distribution
2      Verify Checksums in Transport Global
3      Print Transport Global
4      Compare Transport Global to Current System
5      Backup a Transport Global
6      Install Package(s)
      Restart Install of Package(s)
      Unload a Distribution

Select Installation <TEST ACCOUNT> Option:

      Edits and Distribution ...
      Utilities ...
      Installation ...
      Patch Monitor Main Menu ...

Select Kernel Installation & Distribution System <TEST ACCOUNT> Option:

Do you really want to halt? YES//
```

This email will be generated during the installation:

```
Subj: CONSULT ORDERS: ID FIELD EDIT [#63964] 02/12/16@11:29 10 lines
From: OR*3.0*350 INSTALL In 'OR' basket. Page 1
-----
This message contains a list of ORDER file (#100) IENs where the ID field
was edited from EARLIEST to CLINICALLY for the OR GTX EARLIEST DATE Item Entry.
Any unsuccessful edits are also captured and noted as such.
For those orders, you may manually edit the ID field for the
OR GTX CLINICALLY INDICATED DATE Item Entry
Change the value from EARLIEST to CLINICALLY.
Submit a Remedy ticket if you need/prefer assistance with these edits.

No orders found to edit. If this is the first time this report has been run,
please submit a Remedy ticket for assistance.

Enter message action (in OR basket): Ignore//
```

6 GMRV*5*28 Install Capture

```
1      Load a Distribution
2      Verify Checksums in Transport Global
3      Print Transport Global
4      Compare Transport Global to Current System
5      Backup a Transport Global
6      Install Package(s)
      Restart Install of Package(s)
      Unload a Distribution

You have PENDING ALERTS
      Enter "VA to jump to VIEW ALERTS option

Select Installation <TEST ACCOUNT> Option: 1 Load a Distribution
Enter a Host File: VA5$:[CPRSTEST.V30_TEST_SITES]GMRV_5_28T5.KID;1

KIDS Distribution saved on Apr 13, 2015@13:51:38
Comment: GMRV*5.0*28

This Distribution contains Transport Globals for the following Package(s):
      GMRV*5.0*28
Distribution OK!

Want to Continue with Load? YES//
Loading Distribution...

      GMRV*5.0*28
Use INSTALL NAME: GMRV*5.0*28 to install this Distribution.

1      Load a Distribution
2      Verify Checksums in Transport Global
3      Print Transport Global
4      Compare Transport Global to Current System
5      Backup a Transport Global
6      Install Package(s)
      Restart Install of Package(s)
      Unload a Distribution

You have PENDING ALERTS
      Enter "VA to jump to VIEW ALERTS option

Select Installation <TEST ACCOUNT> Option: BACKUp a Transport Global
Select INSTALL NAME:      GMRV*5.0*28      9/27/15@19:00:47
      => GMRV*5.0*28 ;Created on Apr 13, 2015@13:51:38

This Distribution was loaded on Sep 27, 2015@19:00:47 with header of
      GMRV*5.0*28 ;Created on Apr 13, 2015@13:51:38
It consisted of the following Install(s):
      GMRV*5.0*28
Subject: Backup of GMRV*5.0*28 install on Sep 27, 2015
      Replace
Loading Routines for GMRV*5.0*28
Routine GMV28PST is not on the disk..
Send mail to: HAWSEY,JASON M//      HAWSEY,JASON M
Select basket to send to: IN//
And Send to:
```

```
1      Load a Distribution
2      Verify Checksums in Transport Global
3      Print Transport Global
4      Compare Transport Global to Current System
5      Backup a Transport Global
6      Install Package(s)
      Restart Install of Package(s)
      Unload a Distribution

You have PENDING ALERTS
      Enter "VA to jump to VIEW ALERTS option

Select Installation <TEST ACCOUNT> Option: INstall Package(s)
Select INSTALL NAME:      GMRV*5.0*28      9/27/15@19:00:47
      => GMRV*5.0*28 ;Created on Apr 13, 2015@13:51:38

This Distribution was loaded on Sep 27, 2015@19:00:47 with header of
      GMRV*5.0*28 ;Created on Apr 13, 2015@13:51:38
      It consisted of the following Install(s):
      GMRV*5.0*28
Checking Install for Package GMRV*5.0*28

Install Questions for GMRV*5.0*28

Want KIDS to INHIBIT LOGONS during the install? NO//
Want to DISABLE Scheduled Options, Menu Options, and Protocols? NO//

Enter the Device you want to print the Install messages.
You can queue the install by enter a 'Q' at the device prompt.
Enter a '^' to abort the install.

DEVICE: HOME// ;;999 HOME

-----

Install Started for GMRV*5.0*28 :
      Sep 27, 2015@19:01:04

Build Distribution Date: Apr 13, 2015

Installing Routines:
      Sep 27, 2015@19:01:04

Running Post-Install Routine: EN^GMV28PST

Updating DLL parameter.

Updating Routine file...

Updating KIDS files...

GMRV*5.0*28 Installed.
      Sep 27, 2015@19:01:05

Not a production UCI

      GMRV*5.0*28

Install Completed
```

7 YS*5.01*116 Install Capture

```
Select OPTION NAME: XPD INSTALLATION MENU      Installation
 1      Load a Distribution
 2      Verify Checksums in Transport Global
 3      Print Transport Global
 4      Compare Transport Global to Current System
 5      Backup a Transport Global
 6      Install Package(s)
        Restart Install of Package(s)
        Unload a Distribution

Select Installation <TEST ACCOUNT> Option:  Load a Distribution
Enter a Host File: VA5$:[CPRSTEST.V30_TEST_SITES]YS_501_116V2.KID

KIDS Distribution saved on Sep 30, 2014@13:06:39
Comment: YS*5.01*116

This Distribution contains Transport Globals for the following Package(s):
Build YS*5.01*116 has been loaded before, here is when:
    YS*5.01*116   Loaded from Distribution
                  was loaded on
    YS*5.01*116   Loaded from Distribution
                  was loaded on
OK to continue with Load? NO// y  YES

Distribution OK!

Want to Continue with Load? YES//
Loading Distribution...

    YS*5.01*116
Use INSTALL NAME: YS*5.01*116 to install this Distribution.

 1      Load a Distribution
 2      Verify Checksums in Transport Global
 3      Print Transport Global
 4      Compare Transport Global to Current System
 5      Backup a Transport Global
 6      Install Package(s)
        Restart Install of Package(s)
        Unload a Distribution

Select Installation <TEST ACCOUNT> Option: 5  Backup a Transport Global
Select INSTALL NAME:   YS*5.01*116   9/27/15@18:59:33
=> YS*5.01*116 ;Created on Sep 30, 2014@13:06:39

This Distribution was loaded on Sep 27, 2015@18:59:33 with header of
    YS*5.01*116 ;Created on Sep 30, 2014@13:06:39
It consisted of the following Install(s):
    YS*5.01*116
Subject: Backup of YS*5.01*116 install on Sep 27, 2015
        Replace
No routines for YS*5.01*116

Send mail to: IRMPERSONNEL, FIVE//   IRMPERSONNEL, FIVE
Select basket to send to: IN//
And Send to:
```

```

1      Load a Distribution
2      Verify Checksums in Transport Global
3      Print Transport Global
4      Compare Transport Global to Current System
5      Backup a Transport Global
6      Install Package(s)
      Restart Install of Package(s)
      Unload a Distribution

You have PENDING ALERTS
      Enter "VA to jump to VIEW ALERTS option

Select Installation <TEST ACCOUNT> Option: INstall Package(s)
Select INSTALL NAME:      YS*5.01*116      9/27/15@18:59:33
      => YS*5.01*116 ;Created on Sep 30, 2014@13:06:39

This Distribution was loaded on Sep 27, 2015@18:59:33 with header of
      YS*5.01*116 ;Created on Sep 30, 2014@13:06:39
      It consisted of the following Install(s):
      YS*5.01*116
Checking Install for Package YS*5.01*116

Install Questions for YS*5.01*116

Want KIDS to Rebuild Menu Trees Upon Completion of Install? NO//

Want KIDS to INHIBIT LOGONS during the install? NO//
Want to DISABLE Scheduled Options, Menu Options, and Protocols? NO//

Enter the Device you want to print the Install messages.
You can queue the install by enter a 'Q' at the device prompt.
Enter a '^' to abort the install.

DEVICE: HOME// ;;999 HOME

-----

Install Started for YS*5.01*116 :
      Sep 27, 2015@18:59:54

Build Distribution Date: Sep 30, 2014

Installing Routines:
      Sep 27, 2015@18:59:54

Installing PACKAGE COMPONENTS:

Installing OPTION

RPC YTQ SET ANSWER ALL in Option YS BROKER1 **NOT FOUND**

RPC YTQ ADMIN DELETE in Option YS BROKER1 **NOT FOUND**

Installing PARAMETER DEFINITION
      Sep 27, 2015@18:59:54

Updating Routine file...

Updating KIDS files...

```

```
YS*5.01*116 Installed.  
          Sep 27, 2015@18:59:54  
  
Not a production UCI  
  
                                YS*5.01*116  
  
Install Completed
```

8 XU*8*642 Install Capture

```
Select MailMan Menu <TEST ACCOUNT> Option:  
  
  1      Load a Distribution  
  2      Verify Checksums in Transport Global  
  3      Print Transport Global  
  4      Compare Transport Global to Current System  
  5      Backup a Transport Global  
  6      Install Package(s)  
          Restart Install of Package(s)  
          Unload a Distribution  
  
Select Installation <TEST ACCOUNT> Option: 1 Load a Distribution  
Enter a Host File: SYS$SYSDEVICE:[USER.COMMAND.JASON]XU8P642.KID  
  
KIDS Distribution saved on Sep 27, 2015@19:06:59  
Comment: XU 642  
  
This Distribution contains Transport Globals for the following Package(s):  
  XU*8.0*642  
Distribution OK!  
  
Want to Continue with Load? YES//  
Loading Distribution...  
  
  XU*8.0*642  
Use INSTALL NAME: XU*8.0*642 to install this Distribution.  
  
  1      Load a Distribution  
  2      Verify Checksums in Transport Global  
  3      Print Transport Global  
  4      Compare Transport Global to Current System  
  5      Backup a Transport Global  
  6      Install Package(s)  
          Restart Install of Package(s)  
          Unload a Distribution
```



```
Select Installation <TEST ACCOUNT> Option: BACKup a Transport Global
Select INSTALL NAME:   XU*8.0*642   9/27/15@19:07:25
=> XU 642 ;Created on Sep 27, 2015@19:06:59
```

```
This Distribution was loaded on Sep 27, 2015@19:07:25 with header of
XU 642 ;Created on Sep 27, 2015@19:06:59
It consisted of the following Install(s):
XU*8.0*642
```

```
Subject: Backup of XU*8.0*642 install on Sep 27, 2015
Replace
```

```
Loading Routines for XU*8.0*642.
```

```
Send mail to: IRMPERSONNEL, FIVE // IRMPERSONNEL, FIVE
```

```
Select basket to send to: IN//
```

```
And Send to:
```

- 1 Load a Distribution
 - 2 Verify Checksums in Transport Global
 - 3 Print Transport Global
 - 4 Compare Transport Global to Current System
 - 5 Backup a Transport Global
 - 6 Install Package(s)
- ```
Restart Install of Package(s)
Unload a Distribution
```

```
Select Installation <TEST ACCOUNT> Option: INstall Package(s)
Select INSTALL NAME: XU*8.0*642 9/27/15@19:07:25
=> XU 642 ;Created on Sep 27, 2015@19:06:59
```

```
This Distribution was loaded on Sep 27, 2015@19:07:25 with header of
XU 642 ;Created on Sep 27, 2015@19:06:59
It consisted of the following Install(s):
XU*8.0*642
```

```
Checking Install for Package XU*8.0*642
```

```
Install Questions for XU*8.0*642
```

```
Want KIDS to INHIBIT LOGONs during the install? NO//
```

```
Want to DISABLE Scheduled Options, Menu Options, and Protocols? NO//
```

```
Enter the Device you want to print the Install messages.
```

```
You can queue the install by enter a 'Q' at the device prompt.
```

```
Enter a '^' to abort the install.
```

```
DEVICE: HOME// ;;999 HOME
```

```
XU*8.0*642
```

```

-
Install Started for XU*8.0*642 :
Sep 27, 2015@19:07:44
```

```
Build Distribution Date: Sep 27, 2015
```

```
Installing Routines:
Sep 27, 2015@19:07:44
```

```
Updating Routine file...
```

```
Updating KIDS files...

XU*8.0*642 Installed.
 Sep 27, 2015@19:07:44

Not a production UCI

NO Install Message sent

100% |-----+
Complete |-----+
Install Completed
```

**9 GMRC\*3.0\*81 Install Capture**

```
Install Started for GMRC*3.0*81 :
 Mar 04, 2015@14:47:01

Build Distribution Date: Mar 04, 2015

Installing Routines:
 Mar 04, 2015@14:47:02

Running Pre-Install Routine: PRE^GMRCPI81

Deleting current DD for REQUEST/CONSULTATION #123. Data remains intact.

Complete. KIDS will now install the updated DD.

Installing Data Dictionaries:
 Mar 04, 2015@14:47:02

Installing PACKAGE COMPONENTS:

Installing INPUT TEMPLATE
 Mar 04, 2015@14:47:02

Updating Routine file...

Updating KIDS files...

GMRC*3.0*81 Installed.
 Mar 04, 2015@14:47:02

Not a production UCI

NO Install Message sent
```

## 10 GMTS\*2.7\*112 Install Capture

```
Install Started for GMTS*2.7*112 :
 Mar 05, 2015@14:24:34

Build Distribution Date: Mar 04, 2015

Installing Routines:
 Mar 05, 2015@14:24:34

Running Post-Install Routine: POST^GMTSP112

Adding "MAS CONTACTS" component to the PDX package
 Component successfully added

Adding "MAS MH CLINIC VISITS FUTURE" component to the PDX package
 Component successfully added

Adding "MH HIGH RISK PRF HX" component to the PDX package
 Component successfully added

Adding "MH TREATMENT COORDINATOR" component to the PDX package
 Component successfully added

Updating the DESCRIPTION for the CNB component...

Update completed...

Updating Routine file...

Updating KIDS files...

GMTS*2.7*112 Installed.
 Mar 05, 2015@14:24:35

Not a production UCI

NO Install Message sent
```

## 11 OR\*3.0\*424 Install Capture

```
Select Installation <TEST ACCOUNT> Option: 6 Install Package(s)
Select INSTALL NAME: or*3.0*424 2/11/16@12:02:53
 => OR*3*424 ;Created on Jan 28, 2016@10:05:01

This Distribution was loaded on Feb 11, 2016@12:02:53 with header of
 OR*3*424 ;Created on Jan 28, 2016@10:05:01
 It consisted of the following Install(s):
 OR*3.0*424
Checking Install for Package OR*3.0*424

Install Questions for OR*3.0*424

Incoming Files:
```

```
101.41 ORDER DIALOG (including data)
Note: You already have the 'ORDER DIALOG' File.
I will OVERWRITE your data with mine.
```

```
Want KIDS to INHIBIT LOGONS during the install? NO//
Want to DISABLE Scheduled Options, Menu Options, and Protocols? NO//
```

```
Enter the Device you want to print the Install messages.
You can queue the install by enter a 'Q' at the device prompt.
Enter a '^' to abort the install.
```

```
DEVICE: HOME// HOME (CRT)
```

```

```

```
-
```

```
Install Started for OR*3.0*424 :
 Feb 11, 2016@12:07:12
```

```
Build Distribution Date: Jan 28, 2016
```

```
Installing Routines:
 Feb 11, 2016@12:07:12
```

```
Installing Data Dictionaries:
 Feb 11, 2016@12:07:12
```

```
Installing Data:
 Feb 11, 2016@12:07:14
```

```
Updating Routine file...
```

```
Updating KIDS files...
```

```
OR*3.0*424 Installed.
 Feb 11, 2016@12:07:14
```