



CPRS-VBECS Interface (OR*3.0*212) Release Notes

April 2009

Department of Veterans Affairs
Office of Enterprise Development
Computerized Patient Record System Product Line

Revision History

The most recent entries in this list are linked to the location in the manual they describe. Click on a link or page number to go to that section.

Date	Page	Change	Project Manager	Technical Writer
April 2009	All	Initial Release	REDACTED	REDACTED

Table of Contents

Revision History.....	2
Table of Contents	3
Introduction	4
Order Dialog.....	4
OR*3.0*212 Required Patches.....	5
Install Considerations	6
New Blood Product Dialog	6
Old Blood Bank Laboratory Tests Disabled.....	6
Re-do Old Quick Orders.....	7
Convert Existing Orders	8
Consider Auto/DC Blood Orders	9
VistA Parameters.....	11
Incorporate Local Site Procedures.....	12
Installation Timeline.....	13
Troubleshooting OR*3.0*212	14
OR*3.0*212 Known Issues	17
Fixed in CPRS 27N	17
VBECS Server Down or HL7 Link Down	18

Introduction

VBECS (VistA Blood Establishment Computer System) replaces the current blood bank functionality under VistA with a dedicated server providing blood ordering and other blood transfusion services. These servers will undergo a phased implementation in medical centers starting in early 2009. Once an operational VBECS server is in place at a medical center, it is detected by the Computerized Patient Record System (CPRS) which enables the new coordinated order dialog for blood products and the diagnostic lab tests that need to accompany them. VistA patch OR*3.0*212 provides the interface between CPRS and VBECS.

Order Dialog

The new order dialog that is enabled by the presence of VBECS and OR*3.0*212 is unique in that it is a combination of two order dialogs. Blood Components and Diagnostic Tests related to Blood Bank Orders make this a complex order dialog:

Blood Component and Diagnostic Test Order Form

Patient Information | **Blood Bank Orders** | Lab Results

Personal Quick Orders

Blood Components Quantity* **Diagnostic Tests**

Modifiers Collection Type*
Date/Time Wanted* Send Patient to Lab
NOW TODAY

Urgency* Surgery

Reason for Request* Comment

* Indicates a required field

Selected Components and Tests

Test/Component	Qty	Modifiers
----------------	-----	-----------

Remove
Remove All

Accept Order
Quit

Blood components that are orderable from this dialog are:

- RED BLOOD CELLS
- FRESH FROZEN PLASMA
- PLATELETS
- CRYOPRECIPITATE
- WHOLE BLOOD
- OTHER

Associated lab tests include:

- ABO/RH
- ANTIBODY SCREEN
- DIRECT ANTIGLOBULIN TEST
- TRANSFUSION REACTION WORKUP
- TYPE & SCREEN

When a blood component is chosen, and a TYPE & SCREEN has not been completed for the patient within a certain time, CPRS displays a reminder that the TYPE & SCREEN is required and does not allow order acceptance until it is added. Selecting Accept Order displays a message detailing any incomplete fields required for the order to be processed. The order is accessioned in the Laboratory package, the UID number from the Laboratory is used to accept orders in VBECS. This time period is set to 3 (three) days initially but can be changed with the parameter ORWDXVB VBECS TNS CHECK.



Note: The new CPRS ordering process works in conjunction with VBECS which now creates a SF518-like form. Local processes need to be reevaluated in light of the new VistA capabilities and possibility of down-time.

This patch works with CPRS GUI Version 27 and above.

OR*3.0*212 Required Patches

- OR*3.0*243
- VBECS BUNDLE 1.0

Install Considerations

Everything in this section must be tested in a non-production environment (your test account) before installing this patch in your production account. The work you need to do:

- The new Blood Product dialog needs to be place in your local menus.
- Old Blood Bank Laboratory tests need to be modified by the Laboratory Information Manager (LIM) to output only (thus effectively disabling them).
- Re-do Quick orders that use the old Blood Bank Laboratory orderable items. They must be disabled or converted to the to the new VBECS Blood Bank Order Dialog items.
- Convert existing orders using Blood Bank Laboratory tests new orderable items.
- Consider Auto/DC Blood Orders; does your facility want to auto/dc Blood Bank Laboratory orders.
- VistA Parameters should be used to customize the blood bank interface. Set the OR VBECS LEGACY REPORT parameter to Yes.
- Incorporate local site procedures thru the Laboratory Test (#69.9) file.

You need to coordinate with the Laboratory Information Manager (LIM) and/or Clinical Applications Coordinator (CAC) in the performing and testing of this work.

New Blood Product Dialog

Using the CPRS Order Menu Management, you can add the new order dialog, VBECS BLOOD BANK, to the Write Orders pane of CPRS. How each site adds this order dialog is determined by local needs.

Old Blood Bank Laboratory Tests Disabled

On the day you go live with VBECS.

Old Blood Bank Laboratory Tests Orderable Items may have been renamed or added by your medical center. Original Blood Bank Laboratory Tests included:

- Transfusion Request
- Type and Screen
- Coombs (both direct and indirect)
- ABO/RH, but your site may have more

To disable old Blood Bank laboratory tests, the LIM needs to search for them in the LABORATORY TEST file (#60) and change the type field to OUTPUT as shown in this example:

```
DEV5A4:CPRS27>d ^DII
VA FileMan 22.0
Select OPTION: 1  ENTER OR EDIT FILE ENTRIES
INPUT TO WHAT FILE: LABORATORY TEST//  <Enter>
EDIT WHICH FIELD: ALL//  NAME
THEN EDIT FIELD:  TYPE
THEN EDIT FIELD:  <Enter>
```

```
Select LABORATORY TEST NAME: ABO/RH
  1  ABO/RH - LAB
  2  ABO/RH TYPING
CHOOSE 1-2: 2 ABO/RH TYPING
NAME: ABO/RH TYPING//
TYPE: BOTH// OUTPUT OUTPUT (CAN BE DISPLAYED)

Select LABORATORY TEST NAME:
```

Re-do Old Quick Orders

On the day of going live with VBECS.

Quick Orders that use old Blood Bank tests need to be disabled or re-written. You can use the search and replace orderables command [ORCM SEARCH/REPLACE ORDERABLES] to locate quick orders that use old Blood Bank Laboratory tests. Renaming them is an effective way to disable them. As an alternative, you can re-edit them to include the new lab orderable items.

Here is an example of searching for quick orders that use old lab orders:

```
Select OPTION NAME: ORCM SEARCH
  1  ORCM SEARCH/REPLACE          Search/replace components
  2  ORCM SEARCH/REPLACE ORDERABLES  Search/replace orderables
CHOOSE 1-2: 2 ORCM SEARCH/REPLACE ORDERABLES  Search/replace
orderables
Search/replace orderables
Search for: TRANSFUSION REQUEST

Quick Orders and Dialogs containing TRANSFUSION REQUEST
-----
1  LRT TRANSFUSION REQUEST BLOOD RED
2  LRTZ TRANS REQ BLOOD RED
-----
Replace with:
```

The type of quick order must be BLOOD PRODUCTS. Once BLOOD PRODUCTS has been chosen as TYPE, choices for Component or Test are narrowed down to:

- CRYOPRECIPITATE
 - FRESH FROZEN PLASMA
 - OTHER
 - PLATELETS
 - RED BLOOD CELLS
 - WHOLE BLOOD
- or
- ABO/RH
 - ANTIBODY SCREEN
 - DIRECT ANTIGLOBULIN TEST
 - TRANSFUSION REACTION WORKUP
 - TYPE & SCREEN

Any Blood Bank Quick Orders that retains LAB as the Type of Order and selecting one of the old lab orderable items will fail to be processed.

Convert Existing Orders

Immediately prior to live production of VBECS.

The print for old orders can be run at any time. Converting to new orders must be done before the test is performed in the lab. If you choose, you can let the lab take care of this at the time of the test, but doing it before hand may avoid some confusion.

Neither VBECS nor OR*3.0*212 convert old blood orders to the new system. Any pending orders at the time of installation need to be re-entered after installation. In order to do this you should get a list of pending lab orders prior to installing this patch in production. The screen capture below gives a recommended way to accomplish this:

```
DEV5A4:CPRS27>d P^DII
VA FileMan 22.0
Select OPTION: 2 PRINT FILE ENTRIES
OUTPUT FROM WHAT FILE: LAB ORDER ENTRY// <Enter>
SORT BY: DATE ORDERED// ]
SORT BY: DATE ORDERED// @DATE ORDERED
START WITH DATE ORDERED: FIRST// <Enter>
  WITHIN DATE ORDERED, SORT BY: SPECIMEN # (multiple)
  SPECIMEN # SUB-FIELD: TEST (multiple)
  TEST SUB-FIELD: @TEST/PROCEDURE
  START WITH TEST/PROCEDURE: FIRST// TRANSFUSION REQUEST
  GO TO TEST/PROCEDURE: LAST// TRANSFUSION REQUESTZ
  WITHIN TEST/PROCEDURE, SORT BY:
STORE IN 'SORT' TEMPLATE: XXX FUTURE TESTS
  Are you adding 'XXX FUTURE TESTS' as a new SORT TEMPLATE? No// Y (Yes)
DESCRIPTION:
  1>Future lab orders.
  2> <Enter>
EDIT Option: <Enter>
SHOULD TEMPLATE USER BE ASKED 'FROM'-'TO' RANGE FOR 'TEST/PROCEDURE'? NO//
FIRST PRINT FIELD: ]
FIRST PRINT FIELD: DATE ORDERED
THEN PRINT FIELD: SPECIMEN # (multiple)
  THEN PRINT SPECIMEN # SUB-FIELD: TEST (multiple)
  THEN PRINT TEST SUB-FIELD: TEST/PROCEDURE
  THEN PRINT TEST SUB-FIELD:
  THEN PRINT SPECIMEN # SUB-FIELD: ORDER #
  THEN PRINT SPECIMEN # SUB-FIELD: COLLECTION STATUS
  THEN PRINT SPECIMEN # SUB-FIELD: NAME
  THEN PRINT SPECIMEN # SUB-FIELD:
THEN PRINT FIELD:
Heading (S/C): LAB ORDER ENTRY LIST Replace <Enter>
STORE PRINT LOGIC IN TEMPLATE: XXX FUTURE TEST
  Are you adding 'XXX FUTURE TEST' as a new PRINT TEMPLATE? No// Y (Yes)
START AT PAGE: 1//<Enter>
DEVICE: <Enter> HOME
...SORRY, LET ME THINK ABOUT THAT A MOMENT...
LAB ORDER ENTRY LIST                               SEP  9,2008  09:20    PAGE 1
DATE                                                COLLECTION
ORDERED      TEST/PROCEDURE                        ORDER #    STATUS
  NAME
-----
AUG 25,2008  TRANSFUSION REQUEST                    945        UNCOLLECTED
```

You should enter a recent date to limit the size of your report.

Use a locally assigned name space instead of XXX.


```

ORPATIENT, ONE
SEP 2, 2008 TRANSFUSION REQUEST          972      UNCOLLECTED
CPRSPATIENT, SIX
OCT 9, 2008 TRANSFUSION REQUEST          1074     UNCOLLECTED
USRPATIENT, THREE
TRANSFUSION REQUEST                      1076     UNCOLLECTED
ORPATIENT, SEVENTEEN
NOV 2, 2008 TRANSFUSION REQUEST          701      UNCOLLECTED
PSJPATIENT, EIGHT
NOV 3, 2008 TRANSFUSION REQUEST          594      UNCOLLECTED
CPRSPATIENT, TWENTY
NOV 4, 2008 TRANSFUSION REQUEST          829      UNCOLLECTED
CPRSPATIENT, FIVE
Select OPTION:

```

Consider Auto/DC Blood Orders

Your facility should consider how you want the BLOOD PRODUCTS dialogue orders to auto/dc. Setting auto/dc is covered in Appendix G of the CPRS Technical Manual. We've included here an example of adding orders generated from the BLOOD PRODUCTS dialogue to be exempted from a particular patient movement:

```

Select CPRS Configuration (Clin Coord) Option: DO      DELAYED ORDERS/AUTO-DC SET-UP

Select one of the following:

      1      Auto-DC Rules
      2      Release Events

Enter response: 1  Auto-DC Rules

Auto-DC events/rules          Oct 21, 2008@10:49:23          Page:    1 of    1
Auto-DC set up and maintenance - All entries/Truncated view
  Event Name                  Display Text          Active?  Event
1  ADMISSION                  ADMISSION            Y        A
2  DEATH                      DEATH                Y        D
3  DISCHARGE                  DISCHARGE            Y        D
4  FROM ASIH                  FROM ASIH            Y        T
5  FROM PASS                  FROM PASS            Y        T
6  ON PASS                    ON PASS              Y        T
7  SPECIALTY CHANGE          SPECIALTY CHANGE     Y        S
8  SURGERY                    SURGERY              N        O
9  TO ASIH                    TO ASIH              Y        T
10 WARD TRANSFER              WARD TRANSFER       N        T

      Select number or enter action desired                >>>
AE Add/Edit                  CD Change display
AI Activate/Inactivate      DD Detailed Display
Select action: Quit// AE   Add/Edit

Select item(s): 7

Editing auto-dc rules takes effect immediately.

NAME: SPECIALTY CHANGE//
DISPLAY TEXT: SPECIALTY CHANGE//

```

The TYPE OF EVENT, MAS MOVEMENT TYPE, and DIVISION fields can only be edited when the entry is inactive.

```
DC REASON: Treating Specialty Change//
Select EXCEPT FROM SPECIALTY: NH HOSPICE//
  EXCEPT FROM SPECIALTY: NH HOSPICE//
  Select TO SPECIALTY: NH LONG STAY SKILLED NURSING
  //
Select EXCEPT FROM SPECIALTY:
Select TYPE OF ORDERS TO DC: DIETETICS//
Select EXCEPT ORDERS IN DISPLAY GROUP: BLOOD PRODUCTS
  //
Select EXCEPT FOR ORDERABLE ITEM: MRSA CONTACT PRECAUTION
  // ?
  Answer with EXCLUDED ORDERABLE ITEMS EXCEPT FOR ORDERABLE ITEM
  Choose from:
  HOME OXYGEN THERAPY
  HOME OXYGEN REQUEST
  HOME O2
  HOME OXYGEN
  BLOOD PRODUCT ORDER PENDING
  FALL RISK
  PAGE ANESTHESIA
  MRSA CONTACT PRECAUTION

  You may enter a new EXCLUDED ORDERABLE ITEMS, if you wish
  Enter an orderable item that should not be dc'd by this rule.
  Only "active" orderable items can be selected

Answer with ORDERABLE ITEMS NAME, or INACTIVATED, or ID, or CODE, or
  DISPLAY GROUP, or INPATIENT MED, or OUTPATIENT MED, or IV BASE, or
  IV ADDITIVE, or SUPPLY, or NON-VA MEDS, or LAB SECTION, or TYPE, or
  IMAGING TYPE, or COMMON PROCEDURE, or DIET TYPE, or
  DIAGNOSTIC TEST, or SYNONYM, or SET
Do you want the entire ORDERABLE ITEMS List?
Select EXCEPT FOR ORDERABLE ITEM: MRSA CONTACT PRECAUTION
  //
```

VistA Parameters

VBECs comes with the following parameters:

OR VBECs COMPONENT ORDER	List of Blood Components
OR VBECs ERROR MESSAGE	Text for Network Error
OR VBECs LEGACY REPORT	Show Legacy (VISTA) Blood Bank Report
OR VBECs MODIFIERS	List of Component Modifiers
OR VBECs ON	VBECs Functionality Site Enabled
OR VBECs REASON FOR REQUEST	List of Reasons for Request
OR VBECs SUPPRESS NURS ADMIN	Suppress Nursing Admin Prompt
ORWDXVB VBECs TNS CHECK	Max time between TYPE & SCREEN and order

These are available for local setup for the sites particular requirements or local needs.

The OR VBECs COMPONENT ORDER parameter determines the sequence in which the components appear in the selection list.

The OR VBECs ERROR MESSAGE contains text for the error message displayed when CPRS cannot contact the VBECs server to fill in dialog information. The VBECs order process can still proceed because the finished order is transmitted via HL7. You can replace the supplied text of this message with information about your own local procedures, possibly including the Blood Bank phone number.

The OR VBECs LEGACY REPORT parameter determines whether the Legacy (VistA) Blood Bank Report is displayed after the VBECs blood bank report is displayed. Currently this must be set to Yes for you to see this information.

The OR VBECs MODIFIERS parameter allows local configuration of the blood component modifiers. Specifically, it allows you to enter the sequence in which the modifiers should appear in the selection list.

The OR VBECs ON parameter toggles VBECs ON and OFF. Yes means ON, which is the default.

The OR VBECs REASON FOR REQUEST can be used to add site specific reasons for requests making them available for the clinician to select when placing an order.

The OR VBECs SUPPRESS NURS ADMIN parameter disables the prompt/pop-up that tells the user they must enter a Nursing Administration Order manually after entering a VBECs Blood order. Disabling this feature is usually done when a Nursing Administration order has been created and added to a VBECs order set or quick orders.

The ORWDXVB VBECs TNS CHECK parameter sets the number of days to check for a Type & Screen Order. The default is 3 days, but a site may override this by modifying this parameter.

Incorporate Local Site Procedures

Many medical centers have a quick order type of IMMEDIATE DRAW or SEND PATIENT. If this is the case at your medical center you may want to make it the default Collection Type. This can be done by adjusting the contents of the LABORATORY SITE (#69.9) file thus:

```
Select FileMan (VA) Option: ENter or Edit File Entries

INPUT TO WHAT FILE: LABORATORY TEST// 69.9 LABORATORY SITE
                               (1 entry)
EDIT WHICH FIELD: ALL// HOSPITAL SITE      (multiple)
  EDIT WHICH HOSPITAL SITE SUB-FIELD: ALL//
THEN EDIT FIELD:

Select LABORATORY SITE SITE NAME: HOSPITAL
Select HOSPITAL SITE: DERM NEW NORTH COUNTY-BUSCH
//
HOSPITAL SITE: DERM NEW NORTH COUNTY-BUSCH//
MAX DAYS FOR CONTINUOUS ORDERS: 370//
ASK URGENCY:
DEFAULT TYPE FOR QUICK ORDERS: SEND PATIENT//
```

Pointer to the HOSPITAL LOCATION (#44) file.

Can choose the default type.

Installation Timeline

For best results, plan the install for a Saturday so that you can go live on Monday. Coordinate with Surgery and other services so that Blood Bank usage will be light at the beginning of the week.

Months Before

- Figure out how you want things to look in CPRS using your test account—what will need to be changed from Legacy Blood Bank ordering—menus, quick orders, consults?
- What quick orders/menus/order sets/consults do you need to set up?
- What will the new process flow be from order to transfusion completion?
- Will transfusion reaction work-ups be handled differently?
- Get the necessary service buy-in and approval (Surgery, Nursing, Medicine, Anesthesia, etc...) for changes in processes.
- Get ORELSE approval and waivers for Blood Bank staff; check that all Blood Bank staff have the necessary security keys.
- Schedule extra Blood Bank staff to be available during the day of you go live to help with validation, answer phone calls, etc.

Weeks/Days Before

- Conversion patches are installed, anomaly report run and mapping is completed by the Programmer, LIM and Blood Bank Supervisor.
- Schedule the Regional Server Admin Group for your day of go-live to be on stand-by.
- Get VBECs server admin access for your programmer that will be FTPing files to VBECs.
- Consider scheduling a local network person to be on standby for day-of to deal with existing Blood Bank orders for future dates (after go-live).

Day-Of

- Hour One: LIM and programmer begin installing patches, and run conversion.
- Hour Two: After conversion is complete and data validation is performed the LIM, Blood Bank supervisor, any extra Blood Bank staff should come in.
- Hour Three: Programmer/LIM set up HL7 logical links, Monitor view etc...CACs come in to place order dialogue, set up order sets, quick orders, remove old menus.
- Hour Four: LIM gives required menus to Blood Bank staff.
- Hour Five: LIM adds users to system in VBECs and runs some order tests.
- Hour Six: Blood Bank supervisor begins setup of workload, quality control, products, etc. in VBECs. The programmer goes home.
- Hour Seven: Testing of order dialogue –then CACs go home.
- Hour Eight: Blood Bank staff begins entering current inventory into VBECs–LIM goes home after some basic testing that all is well.
- Hour Nine: Blood Bank supervisor and staff have complete access to VBECs.

Troubleshooting OR*3.0*212

When will the VBECS Order Dialog be enabled?

The GUI dialog, and the orderable items related to this patch will appear in CPRS after:

1. The patch OR*3.0*212 is installed
2. The VBECS system is operational
3. The order menu is configured with the VBECS menu item

Once VBECS is installed, VistA Blood Bank 5.2 is disabled and becomes read-only. Each medical center needs to make their providers aware of the change to VBECS so that the ordering of blood products proceeds smoothly.

What happens with orders that go to VBECS?

When an order contains both blood products and lab tests, the complex order is delivered to the laboratory to be collected and accessioned. The UID, Unique Identifier (ID) is used by VBECS to accept orders in the system.

What if the VBECS server is down?

When entering a VBECS order while the VBECS server is down, CPRS displays an error message.

1. If you need the blood product right away, call the blood bank.
2. If the order is for a future procedure, you need do nothing. CPRS keeps orders until the VBECS server is back on line. It will then file your blood order and proceed as normal.

Why doesn't the order dialog display when Blood Bank is selected under the Write Orders Menu?

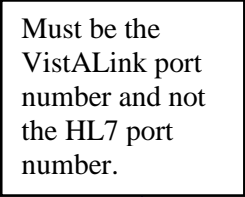
This would be because, during installation, the HL7 link port number was entered in the VistALink port instead of the correct VistALink port number. There is no warning message, just a modal hour glass. The user needs to Ctrl-Alt-Del and use the Task Manager to get out of the application, then restart CPRS.

The fix is to use FileMan to edit the 8989.5 file and enter the correct port number in the VistALink port number as in this example:

```
Select General Parameter Tools Option: lv List Values for a Selected
Parameter
Select PARAMETER DEFINITION NAME: vbecs
    1  VBECS VISTALINK
    2  VBECS FUNCTIONALITY SITE ENABLED OR VBECS ON VBECS
Functionality Site Enabled
CHOOSE 1-2: 1 VBECS VISTALINK

Values for VBECS VISTALINK

Parameter                                Instance                                Value
-----
PKG: VBECS                                LISTENER IP ADDRESS
PKG: VBECS                                LISTENER PORT NUMBER
```



Blood orders never show completed or discontinued in CPRS

This is the opposite problem from the one described above. The HL7 port number is wrong, probably VistALink port number was entered by mistake.

The fix is to use the HL7 Edit Link command as shown in this screen capture:

```
Select Systems Manager Menu Option: h17 HL7 Main Menu

    Event monitoring menu ...
    Systems Link Monitor
    Filer and Link Management Options ...
    Message Management Options ...
    Interface Developer Options ...
    Site Parameter Edit

SM   Systems Link Monitor
FM   Monitor, Start, Stop Filers
LM   TCP Link Manager Start/Stop
SA   Stop All Messaging Background Processes
RA   Restart/Start All Links and Filers
DF   Default Filers Startup
SL   Start/Stop Links
PI   Ping (TCP Only)
ED   Link Edit
ER   Link Errors ...

Select Filer and Link Management Options Option: ed Link Edit

Select HL LOGICAL LINK NODE: vbecs-oERR
```

```

                                HL7 LOGICAL LINK
-----
                                NODE: VBECS-OERR                                DESCRIPTION:
                                INSTITUTION:
                                MAILMAN DOMAIN:
                                AUTOSTART: Enabled
                                QUEUE SIZE: 1000
                                LLP TYPE: TCP
                                DNS DOMAIN: <Enter>
-----
Exit      Save      Refresh

Enter a command or '^' followed by a caption to jump to a specific field.
COMMAND:                                     Press <PF1>H for help

```

```

Select HL LOGICAL LINK NODE: vbec
1  VBECS-OERR
2  VBECSPTM
3  VBECSPTU
CHOOSE 1-3: 1 VBECS-OERR

```

```

                                HL7 LOGICAL LINK
-----
                                TCP LOWER LEVEL PARAMETERS
                                VBECS-OERR
                                TCP/IP SERVICE TYPE: SINGLE ENER
                                TCP/IP ESS:
                                TCP/IP PORT: _____
                                TCP/IP PORT (OPTIMIZED):
                                ACK TIMEOUT:
                                READ TIMEOUT:
                                BLOCK SIZE:
                                STARTUP NODE:
                                RETENTION:
                                RE-TRANSMISSION ATTEMPTS:
                                EXCEED RE-TRANSMIT ACTION:
                                SAY HELO:
                                DIRECT CONNECT OPEN TIMEOUT:
                                PERSISTENT: NO
                                UNI-DIRECTIONAL WAIT:
-----
COMMAND:                                     Press <PF1>H for help

```

The correct
HL7 port
number goes
here.

OR*3.0*212 Known Issues

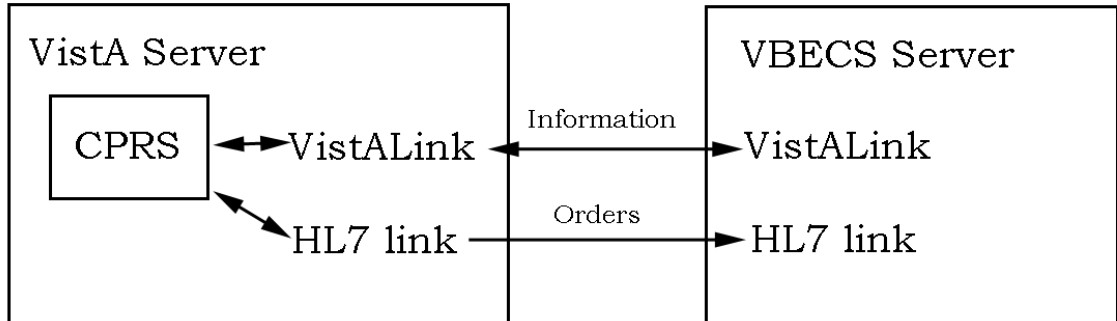
Fixed in CPRS 27N

The following errors are fixed in CPRS 27N. This means that if you already have CPRS 27N installed when you install VBECS and OR*3.0*212, you will not see these errors.

ClearQuest Number	Description
17255	Labs linked to Components display Lab Results Available even though there is no lab data.
17335	Blood Component and Diagnostic Tests fields allow free text but the order will not be processed with free text in one or both of these fields.
17494	Urgency should default to Routine. However, when selecting a Diagnostic Tests before a component the Urgency changes to PRE-OP.
16973	A duplicate Type and Screen warning does not appear for quick orders.
17349	For both quick orders and regular orders: If the Blood Component and Diagnostic Test dialog has two tests, one of them Type and Screen, and you delete the other test, an error appears: An order of TYPE and SCREEN must be created with this order set. This error message appears even though there is a Type and Screen still in the order. You must delete Type and Screen and re-add it before the order is accepted.
17489	VBECS Remote Data look up Blood Bank report only works if All Available Sites is selected.
17490	Urgency should be unpopulated for VBECS Quick Orders that have only the Type and Screen.
17524	The Blood Order and Diagnostic Test sometimes gets hung up in the Diagnostic Test box. If this happens, the only way to recover is to use the key cord Ctrl-Alt-Delete, select the Task Manager, and do and End Task on CPRS.
17614	VBECS uses a different algorithm to fill in the Collection Type than Lab orders. Functionality needs to be changed to use the Lab algorithm in the Blood Order and Diagnostic Test dialog.
17615	VBECS urgency is defaulting to Routine in the Blood Bank and Diagnostic Test dialog. It should be using the same algorithm as Lab to determine the default urgency.

VBECs Server Down or HL7 Link Down

Information flows between CPRS and VBECs along two different paths as shown in this chart:



If the VistALink is down CPRS cannot retrieve information from the VBECs Server, but you still are able to place a VBECs order because CPRS works independently from VBECs. You are informed when the order dialog is opened and can then click on the Blood Bank Orders tab to continue.

If the HL7 link is down VistA must store the order for delivery when the HL7 link is restored.

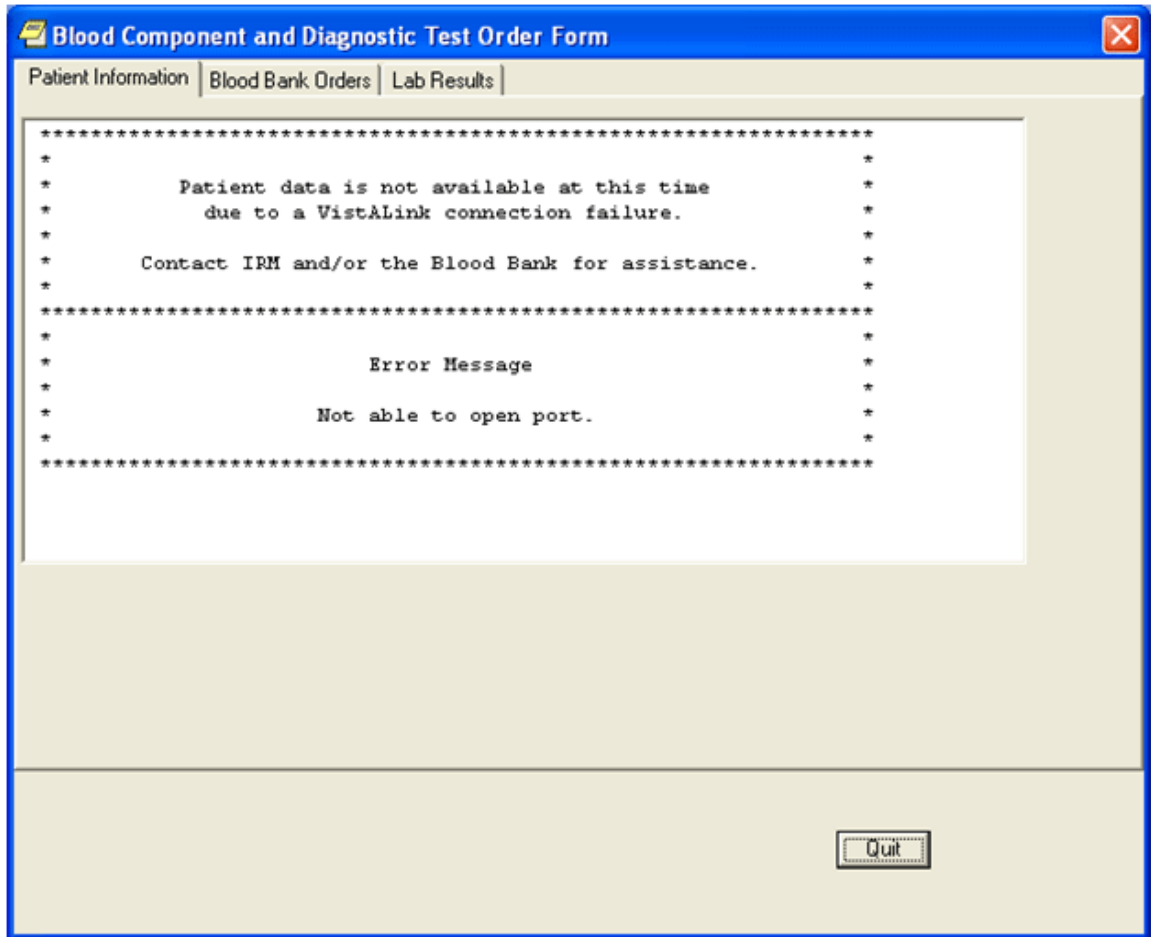
If the VBECs Server is down, then both the VistALink and HL7 link are closed. You will get both messages, one when the order dialog is open and the other when CPRS accepts the order.



Note: If this is a delayed order, you need not take any action. CPRS will transmit the order to VBECs when communication is restored. If the HL7 link is down you must follow local manual procedures in the case that immediate action is required. This usually involves calling the blood bank.

If everything is proceeding normally when you click the Accept Order button, the dialog closes and you can see your pending order in the list of orders.

Two error messages may be displayed when CPRS cannot communicate with VBECS due to the server or one of the communications links being down. The first is this:



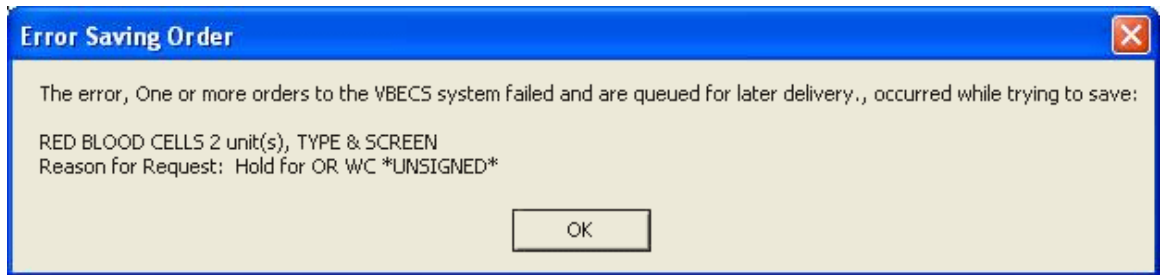
This message simply means that CPRS cannot retrieve certain data to fill in the order dialog. The text of this message can be changed locally with the use of the OR VBECS ERROR MESSAGE parameter.

CPRS will allow you to continue with and complete the order.



Note: You can still complete the order in CPRS after this message appears. Click on the Blood Bank Orders tab and continue.

The other error message that may appear is this:



This means that CPRS is having trouble transmitting the order to VBECS. The order has still been filed in Order Entry, the lab part of the order has still been sent to the lab application, and CPRS will transmit the order to VBECS when communications is restored. You only need to call the blood bank if the order is STAT, immediate, or if you need special products.



Note: If this is a delayed order, you need not take any action. CPRS will transmit the order to VBECS when communication is restored. You must call the blood bank if the order is for immediate action.