



Vista Blood Establishment Computer Software
(VBECS) 2.3.1.1 Rev B

Release Notes Version 4.0

Department of Veterans Affairs
Enterprise Project Management Office

This page intentionally left blank.

Revision History

Date	Revision	Description	Author
5/10/19	1.0	Initial version (Task 967624)	BBM Team
6/19/19	2.0	Updated the validation scenario for row 3 to include only products that were updated from VBECS 2.3.1.1 Rev B (Task 1025428) Table 1: Changed header text from white to black for better clarity on a printed document.	BBM Team
7/22/19	3.0	VBECS 2.3.1.1 Rev B (Task 1064822) Throughout: Clarified that 2.3.1.1 Rev B is a patch of VBECS Version 2.3.1. Untestable System-Level Corrected Code Requests: Added bullet regarding Microsoft Report Viewer upgrade. VistA Software Dependencies: Added VBEC*2*4 VBECS User Documents: Clarified documents Updated Table 1: New ICCBBA Blood Products, to include a modifiable indicator.	BBM Team
8/16/19	4.0	VBECS 2.3.1.1 Rev B (Task 1099936) VBECS SharePoint Site: Section added. Installation Qualification (IQ) Documentation: Updated for revised installation process that no longer requires user downtime.	BBM Team

This page intentionally left blank.

Table of Contents

REVISION HISTORY	I
INTRODUCTION.....	1
CHANGED FEATURES AND FUNCTIONS.....	1
UNTESTABLE SYSTEM-LEVEL CORRECTED CODE REQUESTS.....	1
VISTA SOFTWARE DEPENDENCIES	1
VBECS USER DOCUMENTS.....	2
CUSTOMER SUPPORT	4
PROBLEMS?.....	4
REFERENCES	4
VBECS SHAREPOINT SITE	4
INSTALLATION QUALIFICATION (IQ) DOCUMENTATION.....	4
VALIDATION PLANNING	6
TABLE 1: UPDATES BY OPTION.....	7
TABLE 2: NEW ICCBBA BLOOD PRODUCTS	11
TABLE 3: PRODUCTS WITH UPDATED MAXIMUM STORAGE TIMES/VOLUME CHANGES.....	18
TABLE 4: PRODUCT SHORT NAME CHANGES	19
INDEX.....	20

This page intentionally left blank.

Introduction

VistA Blood Establishment Computer Software (VBECS) 2.3.1.1 Rev B Release Notes contains information for changes and corrections made to VBECS Version 2.3.1 in the build 2.3.1.1 Rev B patch.

Perform a local evaluation and risk assessment of the changes to determine the requirements for local validation of the changes, including documentation of the assessment activities. See Validation Planning.

Changed Features and Functions

This revision letter patch release is centrally focused around providing blood product updates driven by International Council for Commonality in Blood Banking Automation, Inc. (ICCBBA), and to provide solutions to customer reported issues which could be addressed with database-only updates.

Primary Goals of the Project

1. Regulatory Compliance Updates
 - 1.1. Blood Product updates released by ICCBBA November 2018 through February 2019
 - 1.2. Blood product expiration time updates.
 - 1.3. Blood product short name updates.
2. Customer Reported Issues and Enhancements
 - 2.1. Fix known defects and requests related to the Division Workload Report.
 - 2.2. Fix known defects and requests related to Modify Units.
 - 2.3. Fix known defects and requests related to the Inappropriate Transfusion Report.
 - 2.4. Fix known defects and requests related to the Patient Search Utility.

Table 1: Updates by Option provides complete lists of the included changes.

Service Desk ticket numbers are no longer included in the release notes, as the defect tracking number processes all changes. The defect tracking number is identified in the ticket prior to closure.

Untestable System-Level Corrected Code Requests

- When 2.3.1 Rev B is deployed to the production environment, the Microsoft Report Viewer Runtime tool is being upgraded to a newer version in preparation for the report fixes to be released in VBECS 2.3.2.

VistA Software Dependencies

- VBEC*2*4 - This is an informational VistA patch.

VBECS User Documents

The following is a list of all the VBECS user documents that apply to the VBECS 2.3.1 Rev B patch release of VBECS Version 2.3.1. The **Updated** column identifies the documents that have been updated with this VBECS 2.3.1 Rev B revision letter patch release.

These user documents are available from the VA Software Document Library (VDL) at <http://www4.va.gov/vdl/>.

User Document	Version	Updated
<i>Vista Blood Establishment Computer Software (VBECS) 2.3.1.1 Rev B Release Notes</i>	3.0	Yes
<i>Vista Blood Establishment Computer Software (VBECS) 2.3.1 User Guide</i>	2.0	Yes
<i>Vista Blood Establishment Computer Software (VBECS) 2.3.1 Administrator User Guide</i>	2.0	
<i>Vista Blood Establishment Computer Software (VBECS) 2.3.1 Known Defects and Anomalies</i>	3.0	Yes
<i>Vista Blood Establishment Computer Software (VBECS) 2.3.1 Technical Manual-Security Guide</i>	1.0	
<i>Vista Blood Establishment Computer Software (VBECS) - Echo Interface Configuration and Setup Guide</i>	5.0	
<i>Vista Blood Establishment Computer Software (VBECS) - Erytra Interface Configuration and Setup Guide</i>	2.0	
<i>Vista Blood Establishment Computer Software (VBECS) - ProVue Interface Configuration and Setup Guide</i>	5.0	
<i>Vista Blood Establishment Computer Software (VBECS) - Vision Interface Configuration and Setup Guide</i>	4.0	

The following is a list of all the VBECS FAQ documents that apply to the VBECS 2.3.1 Rev B patch release of VBECS Version 2.3.1. The **Updated** column identifies the documents that have been updated with this VBECS 2.3.1 Rev B revision letter patch release (no FAQ documents were updated).

These FAQ documents are available from the VA SharePoint site at **REDACTED**

FAQ Document	Version	Updated
<i>FAQ ABO subgroup Interpretations</i>	11/22/16	
<i>FAQ Ancillary VistA Validation</i>	11/28/17	
<i>FAQ Antibodies with No Antigen Negative Requirement</i>	10/15/14	
<i>FAQ Blood Product Table Processes</i>	03/28/19	
<i>FAQ CAP Comprehensive Transfusions Medicine Crossmatch Survey</i>	11/22/16	
<i>FAQ Compound Antibodies</i>	02/27/13	
<i>FAQ CPRS VBECS Order Details</i>	04/01/09	
<i>FAQ Database Conversion Oddballs</i>	09/18/09	
<i>FAQ Documenting Unhandled Exceptions</i>	05/21/07	
<i>FAQ Handling ABO Incompatible Transfusion Situations</i>	09/23/14	
<i>FAQ How to File a New Service Request for Changes to VBECS</i>	12/08/16	
<i>FAQ How to take faster screen shots from Remote Desktop Session</i>	12/17/14	
<i>FAQ Identifying a Comparable Blood Product Code</i>	03/28/19	
<i>FAQ Local Facilities FDA and FIN Registration Numbers</i>	09/07/18	
<i>FAQ Modification Target Not Available</i>	11/28/17	
<i>FAQ Multidivisional QC Rack Workaround</i>	11/28/17	
<i>FAQ Order Status Clarification</i>	11/15/17	
<i>FAQ Outdated Units Report for a Selected Date Range</i>	01/23/14	
<i>FAQ Polyspecific AHG Not Used for Testing</i>	01/29/10	
<i>FAQ Proper Use of PIV Card with VBECS</i>	12/06/17	
<i>FAQ QC Setup</i>	01/29/10	
<i>FAQ Retesting QC</i>	11/01/11	
<i>FAQ Retrieving an Expired Order</i>	12/07/17	
<i>FAQ The Difference Between Transfusion Only and Full Service Facility Types</i>	02/08/10	
<i>FAQ VBECS Blood Product Hierarchy</i>	03/28/19	
<i>FAQ VBECS Computer Crossmatch Decision Tree</i>	02/08/12	
<i>FAQ Weak D Policy</i>	01/11/10	

Customer Support

Problems?

Contact your Local Office of Information Technology (OIT) or Laboratory Information Manager (LIM) if you encounter VistA or CPRS connection problems and for training support **before** contacting the Service Desk.

- Please ensure local contact information is available at all times. ESD support will engage Infrastructure Operations (IO) personnel as needed.
- Problems with connectivity to VistA and CPRS may require personnel from IO with VBECS server administrator access and VistA IT support access.
- If you experience a Food and Drug Administration (FDA) reportable adverse event (patient death or serious injury) that VBECS may have caused or contributed to, contact the Service Desk directly to enter a ticket for Blood Bank software support.

If the problem remains unresolved after local VistA triage, call the Service Desk (below) and specify the Enterprise Application be set as VistA Blood Establishment Computer Software. This will cause the Assignment group to default to NTL Alert Blood Bank & VBECS, which alerts the Clin2 team.

Service Desk Contact

For Information Technology (IT) support, call the Service Desk (855-NSD-HELP (855-673-4357) toll free, 24 hours per day, 7 days per week.

References

- *ISBT128 Standard Technical Specification v 5.10.0*
- *Blood Product Revisions ICCBBA Version 7.23.0 February 27, 2019*

VBECS SharePoint Site

The VBECS SharePoint site provides a location for additional information related to the VBECS application such as FAQs, installation status, and release history.

REDACTED

Installation Qualification (IQ) Documentation

The expedited patch installation process will continue with the installation of VBECS 2.3.1 Rev B.

Test Account Upgrade to VBECS 2.3.1 Revision B	
Required Patch Installation	VistA Patch: N/A, Server Patch: VBECS 2.3.1 Revision B
Installation Process for VBECS 2.3.1 Rev B	Installed by the BBM team, all sites will be installed in one day. The date of installation will be communicated through a ListServ announcement.
Expected Downtime	None
Installation Communication for VBECS 2.3.1 Rev B	ListServ message will be sent after all Test accounts have been installed

Site Responsibility	<ul style="list-style-type: none"> • Join VBECS-L message board on ListServ, if needed • Please communicate any changes to your site supervisor and Point of Contact (POC) since the last patch install to the BBM team to the email group “VA OIT BBM Team”.
Site Record of Patch Installation	Sites should take and save a screenshot of the VBECS Help, About window after the Test installation is performed. This displays the VBECS updated version information.

Production Account Upgrade to VBECS 2.3.1 Revision B	
Required Patch Installation	VistA Patch: N/A, Server Patch: VBECS 2.3.1 Revision B
Installation Process for VBECS 2.3.1 Rev B	Installed by the BBM team. Production installation does not require participation from the site contacts. A small number of sites will be installed each day over several days. The schedule of installation dates will be communicated through a ListServ announcement.
Expected Downtime	You will be able to use VBECS during the patch installation. VBECS installation on your production account only lasts a few minutes and is invisible to users. If you encounter any disruption or errors while viewing or printing reports during the installation, try again after a few minutes.
Installation Communication for VBECS 2.3.1 Rev B	ListServ message will be sent after each region has been installed into Production.
Site Responsibility	<ul style="list-style-type: none"> • Perform local validation, training, and set-up requirements prior to Production installation. • Join VBECS-L message board on ListServ, if needed • Please communicate any changes to your site supervisor and Point of Contact (POC) since the last patch install to the BBM team to the email group “VA OIT BBM Team”.
Site Record of Patch Installation	Sites should take and save a screenshot of the VBECS Help, About window after Production installation is performed. This displays the VBECS updated version information.

Validation Planning

The following is a flowchart to help assess changes for validation planning.

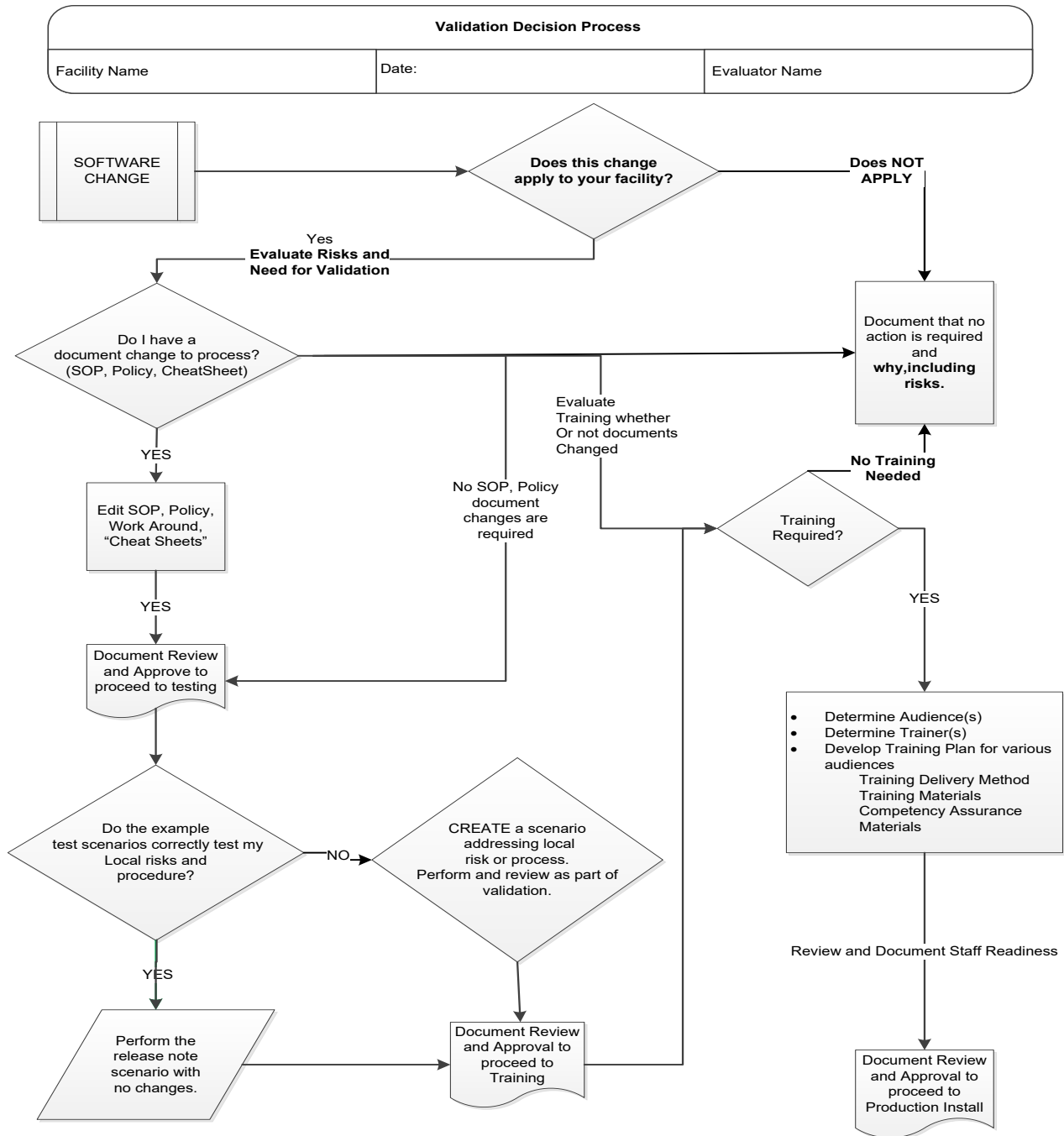


Table 2: Updates by Option

When performing validation of updates in Test Accounts, coordinate with local IT for policies pertaining to the availability of background jobs needed to support validations. In some cases, background jobs may need to be started.

ID	Option	Problem Summary	Change Summary	Validation Scenario	Change applies to my facility. (Y/N)	Local risk Assessment (Low, Med, High)	SOP revision required. If yes, identify it.	Staff training needed. (Y/N)	Scenarios or validation must be performed. (Y/N)
1	Division Workload Report 923115	Workload status incorrectly states "In Process" when it should state "Successfully Processed"	Workload status is correctly represented on the report.	Perform any work in VBECS that generates workload. Verify that the next day the workload shows on the Division Workload Report and the status is "Successfully Processed".					

ID	Option	Problem Summary	Change Summary	Validation Scenario	Change applies to my facility. (Y/N)	Local risk Assessment (Low, Med, High)	SOP revision required. If yes, identify it.	Staff training needed. (Y/N)	Scenarios or validation must be performed. (Y/N)
2	Inappropriate Transfusion Report 714441	If the patient has an inappropriate transfusion the report will duplicate this information for each lab test that was performed on the patient even if the test does not apply to transfused component class (e.g. platelet count for RBC transfusions or HGB test for platelet transfusions).	The inappropriate Transfusion Report will no longer display duplicate records.	<p>This change only affects non-surgical requests and only those need to be tested.</p> <ol style="list-style-type: none"> 1) Configure Inappropriate Request Indicators for at least two different component classes (e.g. RBC and PLT) under Tools -> Component Classes. Good example is HGB, HCT for RBC and Platelet Count for PLT. 2) In Vista/CPRS order tests for patients that coincide with Inappropriate Request Indicators configured above. Enter results for those tests that are above the threshold set in VBECS. 3) Place component orders for those patients, ensure that component class ordered matches the one configured earlier (Make sure that component orders are placed together). 4) Accept orders in VBECS and verify that you get prompted whether to include those order in the Inappropriate Transfusion Request Report. Answer Yes. 5) Run the Inappropriate Transfusion Request Report. Verify that non-surgical request section contains component classes ordered and test results that were entered in Vista/CPRS. Verify that there are no duplicate rows in that section with empty Lab Test names. 					

ID	Option	Problem Summary	Change Summary	Validation Scenario	Change applies to my facility. (Y/N)	Local risk Assessment (Low, Med, High)	SOP revision required. If yes, identify it.	Staff training needed. (Y/N)	Scenarios or validation must be performed. (Y/N)
3	Modify Unit (Container Attribute) 906737	Per ICCBBA, Container traceability must be maintained, prior to this revision it was not maintained. (e.g. E7646 specifically has the "1st container" attribute. That 1st container attribute needs to be carried through when the unit is modified since potentially there is a 2nd and 3rd container out there that could be going to different patients).	If the product being modified has a container attribute the target must contain the same container attribute. Not applicable to pooling.	Try to Thaw product E4693 and it should only present the E4717 and E5549 as targets. Thaw product E7646 and it should only present the E7750 and E5548 as targets. Thaw product E7648 and it should only present the E7751 and E5549 as targets.					
4	Blood Products 965705	Update the blood product table with new ICCBBA blood product codes November 2018 through February 2019.	VBECs contains additional ICCBBA blood product codes for use from E9449 to E9556. For a full list of new product codes see Table 2: New ICCBBA blood products	Use Tools, Blood Products to associate the blood products with an active facility. Repeat as needed for each product code that you may receive from your supplier.					

ID	Option	Problem Summary	Change Summary	Validation Scenario	Change applies to my facility. (Y/N)	Local risk Assessment (Low, Med, High)	SOP revision required. If yes, identify it.	Staff training needed. (Y/N)	Scenarios or validation must be performed. (Y/N)
5	Blood Products 986093	Storage Time and Product Volume changes of Lyophilized, Lysate products and Liquid Pooled Plasma products.	Product Volume change for E7284, E7286 Storage Time and Product Volume change for E8551, E8594 and E9291. Storage Time only changes for E8852, E8853, E8854, E8855. For a full list of Storage Time and Product Volume changes see Table 3: Products with updated Maximum Storage Times/Volume changes.	Use Tools, Blood Products to review each blood product's volume and maximum storage time. Repeat as needed for each product code that you may receive from your supplier.					
6	Blood Products 994733	Product Short Name missing LUKOPR.	Added LUKOPR in the Product Short Name for E8268, E8756, E8757, E8758, E8759, E8760. For a full list of Product Short Name changes see Table 4: Product Short Name changes	Use Tools, Blood Products to review each blood product's short name. Repeat as needed for each product code that you may receive from your supplier.					
7	Patient Search 968221	Searching for a patient using the first letter of the last name and the last four digits of the SSN, the system may present multiple patients in the result set.	VBECS correctly filters the patient search results based on the search criteria.	Navigate to VBECS, Orders -> Recent Patient Orders. Search for a patient using the first letter of the last name and the last four digits of the SSN. Verify that only the correct patient is found.					

Table 3: New ICCBBA Blood Products

Component	Product Code	Modifiable	Product Type	Short Name	Long Name	Maximum Storage Hours
PLATELETS	E9449	Yes	Apheresis PLATELETS	PLT AFR ACD-A>PAS-C	Apheresis PLATELETS ACD-A>PAS-C/XX/refg	120
PLATELETS	E9450	Yes	Apheresis PLATELETS	PLT AFR ACD-A>PAS-C LUKOPR	Apheresis PLATELETS ACD-A>PAS-C/XX/refg ResLeu:<5E6	120
PLATELETS	E9451	Yes	Apheresis PLATELETS	PLT AFR ACD-A>PAS-C LUKOPR 1C	Apheresis PLATELETS ACD-A>PAS-C/XX/refg ResLeu:<5E6 1st container	120
PLATELETS	E9452	Yes	Apheresis PLATELETS	PLT AFR ACD-A>PAS-C LUKOPR 2C	Apheresis PLATELETS ACD-A>PAS-C/XX/refg ResLeu:<5E6 2nd container	120
PLATELETS	E9453	Yes	Apheresis PLATELETS	PLT AFR ACD-A>PAS-C LUKOPR 3C	Apheresis PLATELETS ACD-A>PAS-C/XX/refg ResLeu:<5E6 3rd container	120
PLATELETS	E9454	Yes	Apheresis PLATELETS	PLT AFR ACD-A>PAS-C IRD LUKOPR	Apheresis PLATELETS ACD-A>PAS-C/XX/refg Irradiated ResLeu:<5E6	120
PLATELETS	E9455	Yes	Apheresis PLATELETS	PLT AFR ACD-A>PAS-C IRD LUKOPR 1C	Apheresis PLATELETS ACD-A>PAS-C/XX/refg Irradiated ResLeu:<5E6 1st container	120
PLATELETS	E9456	Yes	Apheresis PLATELETS	PLT AFR ACD-A>PAS-C IRD LUKOPR 2C	Apheresis PLATELETS ACD-A>PAS-C/XX/refg Irradiated ResLeu:<5E6 2nd container	120
PLATELETS	E9457	Yes	Apheresis PLATELETS	PLT AFR ACD-A>PAS-C IRD LUKOPR 3C	Apheresis PLATELETS ACD-A>PAS-C/XX/refg Irradiated ResLeu:<5E6 3rd container	120
PLATELETS	E9458	Yes	Apheresis PLATELETS	PLT AFR ACD-A>PAS-F	Apheresis PLATELETS ACD-A>PAS-F/XX/refg	120
PLATELETS	E9459	Yes	Apheresis PLATELETS	PLT AFR ACD-A>PAS-F LUKOPR	Apheresis PLATELETS ACD-A>PAS-F/XX/refg ResLeu:<5E6	120
PLATELETS	E9460	Yes	Apheresis PLATELETS	PLT AFR ACD-A>PAS-F LUKOPR 1C	Apheresis PLATELETS ACD-A>PAS-F/XX/refg ResLeu:<5E6 1st container	120
PLATELETS	E9461	Yes	Apheresis PLATELETS	PLT AFR ACD-A>PAS-F LUKOPR 2C	Apheresis PLATELETS ACD-A>PAS-F/XX/refg ResLeu:<5E6 2nd container	120
PLATELETS	E9462	Yes	Apheresis PLATELETS	PLT AFR ACD-A>PAS-F LUKOPR 3C	Apheresis PLATELETS ACD-A>PAS-F/XX/refg ResLeu:<5E6 3rd container	120
PLATELETS	E9463	Yes	Apheresis PLATELETS	PLT AFR ACD-A>PAS-F IRD LUKOPR	Apheresis PLATELETS ACD-A>PAS-F/XX/refg Irradiated ResLeu:<5E6	120
PLATELETS	E9464	Yes	Apheresis PLATELETS	PLT AFR ACD-A>PAS-F IRD LUKOPR 1C	Apheresis PLATELETS ACD-A>PAS-F/XX/refg Irradiated ResLeu:<5E6 1st container	120
PLATELETS	E9465	Yes	Apheresis PLATELETS	PLT AFR ACD-A>PAS-F IRD LUKOPR 2C	Apheresis PLATELETS ACD-A>PAS-F/XX/refg Irradiated ResLeu:<5E6 2nd container	120

Component	Product Code	Modifiable	Product Type	Short Name	Long Name	Maximum Storage Hours
PLATELETS	E9466	Yes	Apheresis PLATELETS	PLT AFR ACD-A>PAS-F IRD LUKOPR 3C	Apheresis PLATELETS ACD-A>PAS-F/XX/refg Irradiated ResLeu:<5E6 3rd container	120
PLATELETS	E9467	Yes	Apheresis PLATELETS	PLT AFR ACD-A LUKOPR	Apheresis PLATELETS ACD-A/XX/refg ResLeu:<5E6	120
PLATELETS	E9468	Yes	Apheresis PLATELETS	PLT AFR ACD-A LUKOPR 1C	Apheresis PLATELETS ACD-A/XX/refg ResLeu:<5E6 1st container	120
PLATELETS	E9469	Yes	Apheresis PLATELETS	PLT AFR ACD-A LUKOPR 2C	Apheresis PLATELETS ACD-A/XX/refg ResLeu:<5E6 2nd container	120
PLATELETS	E9470	Yes	Apheresis PLATELETS	PLT AFR ACD-A LUKOPR 3C	Apheresis PLATELETS ACD-A/XX/refg ResLeu:<5E6 3rd container	120
PLATELETS	E9471	Yes	Apheresis PLATELETS	PLT AFR ACD-A LUKOPR	Apheresis PLATELETS ACD-A/XX/refg ResLeu:<5E6 <3E11 plts	120
PLATELETS	E9472	Yes	Apheresis PLATELETS	PLT AFR ACD-A IRD LUKOPR	Apheresis PLATELETS ACD-A/XX/refg Irradiated ResLeu:<5E6 <3E11 plts	120
PLATELETS	E9473	Yes	Apheresis PLATELETS	PLT AFR CPD Psoraln	Apheresis PLATELETS CPD/XX/refg Psoralen-treated	120
PLATELETS	E9474	Yes	Apheresis PLATELETS	PLT AFR CPD LUKOPR 1C Psoraln	Apheresis PLATELETS CPD/XX/refg ResLeu:<5E6 1st container Psoralen-treated	120
PLATELETS	E9475	Yes	Apheresis PLATELETS	PLT AFR CPD LUKOPR 2C Psoraln	Apheresis PLATELETS CPD/XX/refg ResLeu:<5E6 2nd container Psoralen-treated	120
PLATELETS	E9476	Yes	Apheresis PLATELETS	PLT AFR CPD LUKOPR 3C Psoraln	Apheresis PLATELETS CPD/XX/refg ResLeu:<5E6 3rd container Psoralen-treated	120
PLATELETS	E9477	Yes	Apheresis PLATELETS	PLT AFR CPD LUKOPR Psoraln	Apheresis PLATELETS CPD/XX/refg ResLeu:<5E6 Psoralen-treated	120
PLATELETS	E9478	Yes	Apheresis PLATELETS	PLT AFR CPD	Apheresis PLATELETS CPD/XX/refg	120
PLATELETS	E9479	Yes	Apheresis PLATELETS	PLT AFR ACD-A>PAS-F LUKOPR 1C	Apheresis PLATELETS ACD-A>PAS-F/XX/20-24C ResLeu:<5E6 1st container <3E11 plts	120
PLATELETS	E9480	Yes	Apheresis PLATELETS	PLT AFR ACD-A>PAS-F IRD LUKOPR 1C	Apheresis PLATELETS ACD-A>PAS-F/XX/20-24C Irradiated ResLeu:<5E6 1st container <3E11 plts	120
PLATELETS	E9481	No	POOLED PLATELETS	PLT Pool PAS-E	POOLED PLATELETS PAS-E/XX/20-24C	120
PLATELETS	E9482	No	POOLED PLATELETS	PLT Pool PAS-E IRD	POOLED PLATELETS PAS-E/XX/20-24C Irradiated	120

Component	Product Code	Modifiable	Product Type	Short Name	Long Name	Maximum Storage Hours
PLATELETS	E9483	No	POOLED PLATELETS	PLT Pool PAS-E LUKOPR	POOLED PLATELETS PAS-E/XX/20-24C ResLeu:<5E6	120
PLATELETS	E9484	No	POOLED PLATELETS	PLT Pool PAS-E IRD LUKOPR	POOLED PLATELETS PAS-E/XX/20-24C Irradiated ResLeu:<5E6	120
PLATELETS	E9485	No	POOLED PLATELETS	PLT Pool PAS-E OPN	POOLED PLATELETS PAS-E/XX/20-24C Open	4
PLATELETS	E9486	No	POOLED PLATELETS	PLT Pool PAS-E OPN IRD	POOLED PLATELETS PAS-E/XX/20-24C Open Irradiated	4
PLATELETS	E9487	No	POOLED PLATELETS	PLT Pool PAS-E OPN LUKOPR	POOLED PLATELETS PAS-E/XX/20-24C Open ResLeu:<5E6	4
PLATELETS	E9488	No	POOLED PLATELETS	PLT Pool PAS-E OPN IRD LUKOPR	POOLED PLATELETS PAS-E/XX/20-24C Open Irradiated ResLeu:<5E6	4
PLATELETS	E9489	No	Apheresis PLATELETS	PLT AFR PAS-E LUKOPR	Apheresis PLATELETS PAS-E/XX/20-24C ResLeu:<5E6	120
PLATELETS	E9490	No	Apheresis PLATELETS	PLT AFR PAS-E OPN	Apheresis PLATELETS PAS-E/XX/20-24C Open	4
PLATELETS	E9491	No	Apheresis PLATELETS	PLT AFR PAS-E OPN IRD	Apheresis PLATELETS PAS-E/XX/20-24C Open Irradiated	4
PLATELETS	E9492	No	Apheresis PLATELETS	PLT AFR PAS-E OPN LUKOPR	Apheresis PLATELETS PAS-E/XX/20-24C Open ResLeu:<5E6	4
PLATELETS	E9493	No	Apheresis PLATELETS	PLT AFR PAS-E OPN IRD LUKOPR	Apheresis PLATELETS PAS-E/XX/20-24C Open Irradiated ResLeu:<5E6	4
FRESH FROZEN PLASMA	E9494	Yes	Lyophilized Apheresis POOLED FRESH FROZEN PLASMA	FFP AFR Pool Lyfo ACD-A	Lyophilized Apheresis POOLED FRESH FROZEN PLASMA ACD-A/XX/rt	10950
PLATELETS	E9495	No	Apheresis PLATELETS	PLT AFR PAS-E IRD LUKOPR	Apheresis PLATELETS PAS-E/XX/20-24C Irradiated ResLeu:<5E6	120
PLATELETS	E9496	No	POOLED PLATELETS	PLT Pool CPD MNFI IRD LUKOPR	POOLED PLATELETS CPD/XX/20-24C For mnf:injectable Irradiated ResLeu:<5E6	120
PLATELETS	E9497	Yes	Apheresis PLATELETS	PLT AFR ACD-A>PAS-F IRD LUKPPR PLS Red	Apheresis PLATELETS ACD-A>PAS-F/XX/20-24C Irradiated ResLeu:<5E6 Plasma reduced	120
PLATELETS	E9498	Yes	Apheresis PLATELETS	PLT AFR ACD-A>PAS-F IRD LUKPPR PLS Red 1C	Apheresis PLATELETS ACD-A>PAS-F/XX/20-24C Irradiated ResLeu:<5E6 Plasma reduced 1st container	120

Component	Product Code	Modifiable	Product Type	Short Name	Long Name	Maximum Storage Hours
PLATELETS	E9499	Yes	Apheresis PLATELETS	PLT AFR ACD-A>PAS-F IRD LUKPPR PLS Red 2C	Apheresis PLATELETS ACD-A>PAS-F/XX/20-24C Irradiated ResLeu:<5E6 Plasma reduced 2nd container	120
PLATELETS	E9500	Yes	Apheresis PLATELETS	PLT AFR ACD-A>PAS-F IRD LUKPPR PLS Red 3C	Apheresis PLATELETS ACD-A>PAS-F/XX/20-24C Irradiated ResLeu:<5E6 Plasma reduced 3rd container	120
RED BLOOD CELLS	E9501	Yes	RED BLOOD CELLS	RBC CP2D>AS3 LUKOPR PA	RED BLOOD CELLS CP2D>AS3/500mL/refg ResLeu:<5E6 Plasma added	1008
FRESH FROZEN PLASMA	E9502	Yes	Apheresis PLASMA	PLASMA AFR CP2D CRYORed	Apheresis PLASMA CP2D/XX/<=-18C Cryo reduced	8760
PLATELETS	E9503	Yes	Washed Apheresis PLATELETS	PLT AFR Wash PAS-C OPN	Washed Apheresis PLATELETS PAS-C/XX/20-24C Open	4
RED BLOOD CELLS	E9504	Yes	RED BLOOD CELLS	RBC CPDA-1 PA	RED BLOOD CELLS CPDA-1/XX/refg Plasma added	840
WHOLE BLOOD	E9505	No	WHOLE BLOOD	WB ACD-B	WHOLE BLOOD ACD-B/300mL/refg	504
WHOLE BLOOD	E9506	No	WHOLE BLOOD	WB ACD-B IRD	WHOLE BLOOD ACD-B/300mL/refg Irradiated	504
WHOLE BLOOD	E9507	No	WHOLE BLOOD	WB ACD-B LUKOPR	WHOLE BLOOD ACD-B/300mL/refg ResLeu:<3.8E6	504
WHOLE BLOOD	E9508	No	WHOLE BLOOD	WB ACD-B IRD LUKOPR	WHOLE BLOOD ACD-B/300mL/refg Irradiated ResLeu:<3.8E6	504
FRESH FROZEN PLASMA	E9509	No	PLASMA	PLASMA ACD-B	PLASMA ACD-B/XX/<=-18C 150mL	8760
FRESH FROZEN PLASMA	E9510	No	PLASMA	PLASMA ACD-B Methyl Blue	PLASMA ACD-B/XX/<=-18C 150mL Methylene blue-treated	8760
FRESH FROZEN PLASMA	E9511	No	FRESH FROZEN PLASMA	FFP ACD-B	FRESH FROZEN PLASMA ACD-B/XX/<=-18C 150mL	8760
FRESH FROZEN PLASMA	E9512	No	FRESH FROZEN PLASMA	FFP ACD-B Methyl Blue	FRESH FROZEN PLASMA ACD-B/XX/<=-18C 150mL Methylene blue-treated	8760

Component	Product Code	Modifiable	Product Type	Short Name	Long Name	Maximum Storage Hours
RED BLOOD CELLS	E9513	No	RED BLOOD CELLS	RBC ACD-B>MAP	RED BLOOD CELLS ACD-B>MAP/300mL/refg	1008
RED BLOOD CELLS	E9514	No	RED BLOOD CELLS	RBC ACD-B>MAP IRD	RED BLOOD CELLS ACD-B>MAP/300mL/refg Irradiated	672
RED BLOOD CELLS	E9515	No	RED BLOOD CELLS	RBC ACD-B>MAP LUKOPR	RED BLOOD CELLS ACD-B>MAP/300mL/refg ResLeu:<3.8E6	1008
RED BLOOD CELLS	E9516	No	RED BLOOD CELLS	RBC ACD-B>MAP IRD LUKOPR	RED BLOOD CELLS ACD-B>MAP/300mL/refg Irradiated ResLeu:<3.8E6	672
RED BLOOD CELLS	E9517	No	Washed RED BLOOD CELLS	RBC Wash None	Washed RED BLOOD CELLS None/300mL/refg	24
RED BLOOD CELLS	E9518	No	Washed RED BLOOD CELLS	RBC Wash None IRD	Washed RED BLOOD CELLS None/300mL/refg Irradiated	24
RED BLOOD CELLS	E9519	No	Deglycerolized RED BLOOD CELLS	RBC Deg None	Deglycerolized RED BLOOD CELLS None/300mL/refg	336
CRYOPRECIPITATE	E9520	No	CRYOPRECIPITATE	CRYO ACD-B	CRYOPRECIPITATE ACD-B/300mL/<=-18C	8760
PLATELETS	E9521	No	PLATELET-RICH PLASMA	PLASMA PltRch CPD MNFRNI OPN IRD	PLATELET-RICH PLASMA CPD/450mL/20-24C For mnf:noninjectable restr use Open Irradiated	4
PLATELETS	E9522	No	Frozen Apheresis PLATELETS	PLT AFR Froz ACD-A MNFI	Frozen Apheresis PLATELETS ACD-A/XX/<=-18C For mnf:injectable	8760
PLATELETS	E9523	No	Frozen Apheresis PLATELETS	PLT AFR Froz ACD-A MNFI 1C	Frozen Apheresis PLATELETS ACD-A/XX/<=-18C For mnf:injectable 1st container	8760
PLATELETS	E9524	No	Frozen Apheresis PLATELETS	PLT AFR Froz ACD-A MNFI 2C	Frozen Apheresis PLATELETS ACD-A/XX/<=-18C For mnf:injectable 2nd container	8760
PLATELETS	E9525	No	Frozen Apheresis PLATELETS	PLT AFR Froz ACD-A MNFI 3C	Frozen Apheresis PLATELETS ACD-A/XX/<=-18C For mnf:injectable 3rd container	8760
PLATELETS	E9526	No	Frozen Apheresis PLATELETS	PLT AFR Froz ACD-A MNFI IRD	Frozen Apheresis PLATELETS ACD-A/XX/<=-18C For mnf:injectable Irradiated	8760
PLATELETS	E9527	No	Frozen Apheresis PLATELETS	PLT AFR Froz ACD-A MNFI IRD 1C	Frozen Apheresis PLATELETS ACD-A/XX/<=-18C For mnf:injectable Irradiated 1st container	8760

Component	Product Code	Modifiable	Product Type	Short Name	Long Name	Maximum Storage Hours
PLATELETS	E9528	No	Frozen Apheresis PLATELETS	PLT AFR Froz ACD-A MNFI IRD 2C	Frozen Apheresis PLATELETS ACD-A/XX/<=-18C For mnf:injectable Irradiated 2nd container	8760
PLATELETS	E9529	No	Frozen Apheresis PLATELETS	PLT AFR Froz ACD-A MNFI IRD 3C	Frozen Apheresis PLATELETS ACD-A/XX/<=-18C For mnf:injectable Irradiated 3rd container	8760
FRESH FROZEN PLASMA	E9530	Yes	Thawed Apheresis FRESH FROZEN PLASMA	FFP AFR Thaw CP2D OPN 1C	Thawed Apheresis FRESH FROZEN PLASMA CP2D/XX/refg Open 1st container	24
FRESH FROZEN PLASMA	E9531	Yes	Thawed Apheresis FRESH FROZEN PLASMA	FFP AFR Thaw CP2D OPN 1C	Thawed Apheresis FRESH FROZEN PLASMA CP2D/XX/refg Open 2nd container	24
RED BLOOD CELLS	E9532	No	RED BLOOD CELLS	RBC PAGGS-M LUKOPR O2/CO2 Red	RED BLOOD CELLS PAGGS-M/450mL/refg ResLeu:<1E6 O2/CO2 reduced	1008
PLATELETS	E9533	No	Frozen Apheresis PLATELETS	PLT AFR Froz ACD-A>PAS-F MNFI LUKOPR	Frozen Apheresis PLATELETS ACD-A>PAS-F/XX/<=-18C For mnf:injectable ResLeu:<5E6	8760
PLATELETS	E9534	No	Frozen Apheresis PLATELETS	PLT AFR Froz ACD-A>PAS-F MNFI LUKOPR 1C	Frozen Apheresis PLATELETS ACD-A>PAS-F/XX/<=-18C For mnf:injectable ResLeu:<5E6 1st container	8760
PLATELETS	E9535	No	Frozen Apheresis PLATELETS	PLT AFR Froz ACD-A>PAS-F MNFI LUKOPR 2C	Frozen Apheresis PLATELETS ACD-A>PAS-F/XX/<=-18C For mnf:injectable ResLeu:<5E6 2nd container	8760
PLATELETS	E9536	No	Frozen Apheresis PLATELETS	PLT AFR Froz ACD-A>PAS-F MNFI LUKOPR 3C	Frozen Apheresis PLATELETS ACD-A>PAS-F/XX/<=-18C For mnf:injectable ResLeu:<5E6 3rd container	8760
PLATELETS	E9537	No	Frozen Apheresis PLATELETS	PLT AFR Froz ACD-A>PAS-F MNFI IRD LUKOPR	Frozen Apheresis PLATELETS ACD-A>PAS-F/XX/<=-18C For mnf:injectable Irradiated ResLeu:<5E6	8760
PLATELETS	E9538	No	Frozen Apheresis PLATELETS	PLT AFR Froz ACD-A>PAS-F MNFI IRD LUKOPR 1C	Frozen Apheresis PLATELETS ACD-A>PAS-F/XX/<=-18C For mnf:injectable Irradiated ResLeu:<5E6 1st container	8760
PLATELETS	E9539	No	Frozen Apheresis PLATELETS	PLT AFR Froz ACD-A>PAS-F MNFI IRD LUKOPR 2C	Frozen Apheresis PLATELETS ACD-A>PAS-F/XX/<=-18C For mnf:injectable Irradiated ResLeu:<5E6 2nd container	8760
PLATELETS	E9540	No	Frozen Apheresis PLATELETS	PLT AFR Froz ACD-A>PAS-F MNFI IRD LUKOPR 3C	Frozen Apheresis PLATELETS ACD-A>PAS-F/XX/<=-18C For mnf:injectable Irradiated ResLeu:<5E6 3rd container	8760
PLATELETS	E9541	No	Frozen Apheresis PLATELETS	PLT AFR Froz ACD-A MNFNI	Frozen Apheresis PLATELETS ACD-A/XX/<=-18C For mnf:noninjectable	8760
PLATELETS	E9542	No	Frozen Apheresis PLATELETS	PLT AFR Froz ACD-A MNFNI 1C	Frozen Apheresis PLATELETS ACD-A/XX/<=-18C For mnf:noninjectable 1st container	8760

Component	Product Code	Modifiable	Product Type	Short Name	Long Name	Maximum Storage Hours
PLATELETS	E9543	No	Frozen Apheresis PLATELETS	PLT AFR Froz ACD-A MNFNI 2C	Frozen Apheresis PLATELETS ACD-A/XX/<=-18C For mnf:noninjectable 2nd container	8760
PLATELETS	E9544	No	Frozen Apheresis PLATELETS	PLT AFR Froz ACD-A MNFNI 3C	Frozen Apheresis PLATELETS ACD-A/XX/<=-18C For mnf:noninjectable 3rd container	8760
PLATELETS	E9545	No	Frozen Apheresis PLATELETS	PLT AFR Froz ACD-A MNFNI IRD	Frozen Apheresis PLATELETS ACD-A/XX/<=-18C For mnf:noninjectable Irradiated	8760
PLATELETS	E9546	No	Frozen Apheresis PLATELETS	PLT AFR Froz ACD-A MNFNI IRD 1C	Frozen Apheresis PLATELETS ACD-A/XX/<=-18C For mnf:noninjectable Irradiated 1st container	8760
PLATELETS	E9547	No	Frozen Apheresis PLATELETS	PLT AFR Froz ACD-A MNFNI IRD 2C	Frozen Apheresis PLATELETS ACD-A/XX/<=-18C For mnf:noninjectable Irradiated 2nd container	8760
PLATELETS	E9548	No	Frozen Apheresis PLATELETS	PLT AFR Froz ACD-A MNFNI IRD 3C	Frozen Apheresis PLATELETS ACD-A/XX/<=-18C For mnf:noninjectable Irradiated 3rd container	8760
PLATELETS	E9549	No	Frozen Apheresis PLATELETS	PLT AFR Froz ACD-A>PAS-F MNFNI LUKOPR	Frozen Apheresis PLATELETS ACD-A>PAS-F/XX/<=-18C For mnf:noninjectable ResLeu:<5E6	8760
PLATELETS	E9550	No	Frozen Apheresis PLATELETS	PLT AFR Froz ACD-A>PAS-F MNFNI LUKOPR 1C	Frozen Apheresis PLATELETS ACD-A>PAS-F/XX/<=-18C For mnf:noninjectable ResLeu:<5E6 1st container	8760
PLATELETS	E9551	No	Frozen Apheresis PLATELETS	PLT AFR Froz ACD-A>PAS-F MNFNI LUKOPR 2C	Frozen Apheresis PLATELETS ACD-A>PAS-F/XX/<=-18C For mnf:noninjectable ResLeu:<5E6 2nd container	8760
PLATELETS	E9552	No	Frozen Apheresis PLATELETS	PLT AFR Froz ACD-A>PAS-F MNFNI LUKOPR 3C	Frozen Apheresis PLATELETS ACD-A>PAS-F/XX/<=-18C For mnf:noninjectable ResLeu:<5E6 3rd container	8760
PLATELETS	E9553	No	Frozen Apheresis PLATELETS	PLT AFR Froz ACD-A>PAS-F MNFNI IRD LUKOPR	Frozen Apheresis PLATELETS ACD-A>PAS-F/XX/<=-18C For mnf:noninjectable Irradiated ResLeu:<5E6	8760
PLATELETS	E9554	No	Frozen Apheresis PLATELETS	PLT AFR Froz ACD-A>PAS-F MNFNI IRD LUKOPR 1C	Frozen Apheresis PLATELETS ACD-A>PAS-F/XX/<=-18C For mnf:noninjectable Irradiated ResLeu:<5E6 1st container	8760
PLATELETS	E9555	No	Frozen Apheresis PLATELETS	PLT AFR Froz ACD-A>PAS-F MNFNI IRD LUKOPR 2C	Frozen Apheresis PLATELETS ACD-A>PAS-F/XX/<=-18C For mnf:noninjectable Irradiated ResLeu:<5E6 2nd container	8760
PLATELETS	E9556	No	Frozen Apheresis PLATELETS	PLT AFR Froz ACD-A>PAS-F MNFNI IRD LUKOPR 3C	Frozen Apheresis PLATELETS ACD-A>PAS-F/XX/<=-18C For mnf:noninjectable Irradiated ResLeu:<5E6 3rd container	8760

Table 4: Products with Updated Maximum Storage Times/Volume Changes

Component	Product Code	Product Type	Long Name	Maximum Storage Hours (Before)	Maximum Storage Hours (After)	Product Volume (Before)	Product Volume (After)
FRESH FROZEN PLASMA	E7284	Lyophilized FRESH FROZEN PLASMA	Lyophilized FRESH FROZEN PLASMA CPD/XX/refg	8760	8760	1	200
FRESH FROZEN PLASMA	E7286	Lyophilized FRESH FROZEN PLASMA	Lyophilized FRESH FROZEN PLASMA CPD/XX/rt	8760	8760	1	200
PLATELETS	E8551	Frozen PLATELET LYSATE	Frozen PLATELET LYSATE None/XX/<=-20C Not for tx or mnf Open ResLeu:NS Fin Con:NS Multiple wash cycles Sterile filtered From multiple donors, number not specified	1	8760	1	50
PLATELETS	E8594	Lyophilized PLATELET-RICH PLASMA	Lyophilized PLATELET-RICH PLASMA CPDA-1/200mL/20-24C For mnf:injectable	1	10950	1	200
PLATELETS	E9291	Frozen PLATELET LYSATE	Frozen PLATELET LYSATE NaCitrate/XX/<=-20C For mnf:injectable Open Saline added Fin Con:NS Sterile filtered	1	8760	1	50
FRESH FROZEN PLASMA	E8852	Liquid POOLED PLASMA	Liquid POOLED PLASMA CPD/XX/refg From 2 donors	24	624	225	225
FRESH FROZEN PLASMA	E8853	Liquid POOLED PLASMA	Liquid POOLED PLASMA CPD/XX/refg Irradiated From 2 donors	24	624	225	225
FRESH FROZEN PLASMA	E8854	Liquid POOLED PLASMA	Liquid POOLED PLASMA CP2D/XX/refg From 2 donors	24	624	225	225
FRESH FROZEN PLASMA	E8855	Liquid POOLED PLASMA	Liquid POOLED PLASMA CP2D/XX/refg Irradiated From 2 donors	24	624	225	225

Table 5: Product Short Name Changes

Component	Product Code	Product Type	Long Name	Short Name (Before)	Short Name (After)
FRESH FROZEN PLASMA	E8268	PLASMA	PLASMA CPD/450mL/<=30C ResLeu:<1E6 Frozen <=24h Methylene blue-treated	PLASMA CPD Methyl Blue	PLASMA CPD LUKOPR Methyl Blue
PLATELETS	E8756	Washed Apheresis PLATELETS	Washed Apheresis PLATELETS None/XX/20-24C Open Irradiated ResLeu:<5E6 Psoralen-treated	PLT AFR Wash None OPN IRD Psoraln	PLT AFR Wash None OPN IRD LUKOPR Psoraln
PLATELETS	E8757	Washed Apheresis PLATELETS	Washed Apheresis PLATELETS None/XX/20-24C Open Irradiated ResLeu:<5E6 <3E11 plts Psoralen-treated	PLT AFR Wash None OPN IRD Psoraln	PLT AFR Wash None OPN IRD LUKOPR Psoraln
PLATELETS	E8758	Washed Apheresis PLATELETS	Washed Apheresis PLATELETS None/XX/20-24C Open Irradiated ResLeu:<5E6 1st container Psoralen-treated	PLT AFR Wash None OPN IRD 1C Psoraln	PLT AFR Wash None OPN IRD LUKOPR 1C Psoraln
PLATELETS	E8759	Washed Apheresis PLATELETS	Washed Apheresis PLATELETS None/XX/20-24C Open Irradiated ResLeu:<5E6 2nd container Psoralen-treated	PLT AFR Wash None OPN IRD 2C Psoraln	PLT AFR Wash None OPN IRD LUKOPR 2C Psoraln
PLATELETS	E8760	Washed Apheresis PLATELETS	Washed Apheresis PLATELETS None/XX/20-24C Open Irradiated ResLeu:<5E6 3rd container Psoralen-treated	PLT AFR Wash None OPN IRD 3C Psoraln	PLT AFR Wash None OPN IRD LUKOPR 3C Psoraln

Index

	C	
Customer Support		4
	I	
Introduction		1
	P	
Problems?		4
	R	
Related Manuals and Materials.....		2
	V	
VA Service Desk.....		4

This is the last page of *VistA Blood Establishment Computer Software (VBECS) 2.3.1.1 Rev B Release Notes*.