



VistA Blood Establishment Computer Software (VBECS) 2.3.2 Rev B

Release Notes Version 3.0

Department of Veterans Affairs
Enterprise Project Management Office

This page intentionally left blank.

Revision History

Date	Revision	Description	Author
12/11/19	1.0	VBECs 2.3.2 Rev B Initial version	BBM Team
1/3/20	2.0	VBECs 2.3.2 Rev B Updates from UAT	BBM Team
2/12/20	3.0	VBECs 2.3.2 Rev B Updates from IOC	BBM Team

This page intentionally left blank.

Table of Contents

- REVISION HISTORY I**
- INTRODUCTION..... 1**
- CHANGED FEATURES AND FUNCTIONS..... 1**
 - UNTESTABLE SYSTEM-LEVEL CORRECTED CODE REQUESTS..... 1
 - VISTA SOFTWARE DEPENDENCIES 1
 - VBECs USER DOCUMENTS 2
- CUSTOMER SUPPORT 4**
 - PROBLEMS?..... 4
 - REFERENCES 4
 - VBECs SHAREPOINT SITE 4
- INSTALLATION QUALIFICATION (IQ) DOCUMENTATION..... 4**
- VALIDATION PLANNING 6**
- TABLE 1: UPDATES BY OPTION..... 7**
- TABLE 2: NEW ICCBBA BLOOD PRODUCTS 11**
- APPENDIX A: PLACE AND SIGN A VBECs ORDER (VIA CPRs GUI) 23**
- INDEX..... 27**

This page intentionally left blank.

Introduction

VistA Blood Establishment Computer Software (VBECS) 2.3.2 Rev B Release Notes contains information for changes and corrections made to VBECS in the 2.3.2 Rev B patch.

Perform a local evaluation and risk assessment of the changes to determine the requirements for local validation of the changes, including documentation of the assessment activities. See Validation Planning.

Changed Features and Functions

This revision letter patch release is centrally focused around providing blood product updates released from International Council for Commonality in Blood Banking Automation, Inc. (ICCBBA) and to provide solutions to customer reported issues which could be addressed with database-only updates.

Primary Goals of the Project

1. Regulatory Compliance Updates
 - 1.1. Blood product updates released by ICCBBA April 2019 through September 2019.
 - 1.2. Fix known defects related to the blood product table.
2. Customer Reported Issues and Enhancements
 - 2.1. Fix known defects and requests related to the Division Transfusion Report.
 - 2.2. Fix known defects and requests related to the Cost Accounting Report and Unit History Report.
 - 2.3. Present all ABO/Rh compatible units (including Limited and Quarantined) on the unit selection picklist when selecting blood units for a patient.

Table 1: Updates by Option provides complete lists of the included changes.

For a full list of new product codes see Table 2: New ICCBBA Blood Products.

Service Desk ticket numbers are no longer included in the release notes, as the defect tracking number processes all changes. The defect tracking number is identified in the ticket prior to closure.

Untestable System-Level Corrected Code Requests

- None

VistA Software Dependencies

- VBEC*2*6 - This is an informational VistA patch.

VBECS User Documents

The following is a list of all the VBECS user documents that apply to the VBECS 2.3.2 Rev B patch release. The **Updated** column identifies the documents that have been updated with this VBECS 2.3.2 Rev B revision letter patch release.

These user documents are available from the VA Software Document Library (VDL) at <https://www.va.gov/vdl/application.asp?appid=182>.

User Document	Version	Updated
<i>VistA Blood Establishment Computer Software (VBECS) 2.3.2 User Guide</i>	4.0	Yes
<i>VistA Blood Establishment Computer Software (VBECS) 2.3.2 Administrator User Guide</i>	3.0	No
<i>VistA Blood Establishment Computer Software (VBECS) 2.3.2 Known Defects and Anomalies</i>	3.0	Yes
<i>VistA Blood Establishment Computer Software (VBECS) 2.3.2 Technical Manual-Security Guide</i>	1.0	No
<i>VistA Blood Establishment Computer Software (VBECS) - Echo Interface Configuration and Setup Guide</i>	5.0	No
<i>VistA Blood Establishment Computer Software (VBECS) - Erytra Interface Configuration and Setup Guide</i>	2.0	No
<i>VistA Blood Establishment Computer Software (VBECS) - ProVue Interface Configuration and Setup Guide</i>	5.0	No
<i>VistA Blood Establishment Computer Software (VBECS) - Vision Interface Configuration and Setup Guide</i>	4.0	No

The following is a list of all the VBECS FAQ documents that apply to the VBECS 2.3.2 Rev B patch release. The **Updated** column identifies the documents that have been updated with this VBECS 2.3.2 Rev B revision letter patch release.

These FAQ documents are available from the VA SharePoint site at **REDACTED**

FAQ Document	Version	Updated
<i>FAQ ABO subgroup Interpretations</i>	11/22/16	No
<i>FAQ Ancillary VistA Validation</i>	11/28/17	No
<i>FAQ Antibodies with No Antigen Negative Requirement</i>	10/15/14	No
<i>FAQ Blood Product Table Processes</i>	03/28/19	No
<i>FAQ CAP Comprehensive Transfusions Medicine Crossmatch Survey</i>	11/22/16	No
<i>FAQ Compound Antibodies</i>	02/27/13	No
<i>FAQ CPRS VBECS Order Details</i>	04/01/09	No
<i>FAQ Database Conversion Oddballs</i>	09/15/09	No
<i>FAQ Documenting Unhandled Exceptions</i>	05/21/07	No
<i>FAQ Handling ABO Incompatible Transfusion Situations</i>	09/23/14	No
<i>FAQ How to File a New Service Request for Changes to VBECS</i>	12/08/16	No
<i>FAQ How to take faster screen shots from Remote Desktop Session</i>	12/17/14	No
<i>FAQ Identifying a Comparable Blood Product Code</i>	03/28/19	No
<i>FAQ Local Facilities</i>	12/27/19	Yes
<i>FAQ Local Facilities FDA and FIN Registration Numbers</i>	Retired	Yes
<i>FAQ Modification Target Not Available</i>	11/28/17	No
<i>FAQ Multidivisional QC Rack Workaround</i>	11/28/17	No
<i>FAQ Order Status Clarification</i>	11/15/17	No
<i>FAQ Polyspecific AHG Not Used for Testing</i>	01/29/10	No
<i>FAQ Proper Use of PIV Card with VBECS</i>	11/04/19	No
<i>FAQ QC Setup</i>	01/29/10	No
<i>FAQ Retesting QC</i>	11/01/11	No
<i>FAQ Retrieving an Expired Order</i>	12/07/17	No
<i>FAQ The Difference Between Transfusion Only and Full Service Facility Types</i>	02/08/10	No
<i>FAQ VBECS Blood Product Hierarchy</i>	03/28/19	No
<i>FAQ VBECS Computer Crossmatch Decision Tree</i>	02/08/12	No
<i>FAQ Weak D Policy</i>	01/11/10	No

Customer Support

Problems?

Contact your Local Office of Information Technology (OIT) or Laboratory Information Manager (LIM) if you encounter VistA or CPRS connection problems and for training support **before** contacting the Service Desk (SD).

- Please ensure local contact information is available at all times. SD support will engage Enterprise Operations (EO) personnel as needed.
- Problems with connectivity to VistA and CPRS may require personnel from EO with VBECS server administrator access and VistA IT support access.
- If you experience a Food and Drug Administration (FDA) reportable adverse event (patient death or serious injury) that VBECS may have caused or contributed to, contact the Service Desk directly to enter a ticket for Blood Bank software support.

If the problem remains unresolved after local VistA triage, call the Service Desk (below) and specify the Enterprise Application be set as VistA Blood Establishment Computer Software. This will cause the Assignment group to default to NTL Alert Blood Bank & VBECS, which alerts the Clin2 team.

Service Desk Contact

REDACTED.

References

- *ISBT128 Standard Technical Specification v 5.10.0*
- *Blood Product Revisions ICCBBA Version 7.29.0, September 2019*

VBECS SharePoint Site

The VBECS SharePoint site provides a location for additional information related to the VBECS application such as FAQs, installation status, and release history.

REDACTED.

Installation Qualification (IQ) Documentation

The expedited patch installation process will continue with the installation of VBECS 2.3.2 Rev B.

Test Account Upgrade to VBECS 2.3.2 Revision B	
Required Patch Installation	VistA Patch: N/A Server Patch: VBECS 2.3.2 Revision B
Installation Process for VBECS 2.3.2 Rev B	Installed by the BBM team, all sites will be installed in one day. The date of installation will be communicated through a ListServ announcement.
Expected Downtime	None
Installation Communication for VBECS 2.3.2 Rev B	ListServ message will be sent after all Test accounts have been installed.
Site Responsibility	<ul style="list-style-type: none">• Join VBECS-L message board on ListServ, if needed.

	<ul style="list-style-type: none"> Please communicate any changes to your site supervisor and Point of Contact (POC) since the last patch install to the BBM team to the email group “VA OIT BBM Team”.
Site Record of Patch Installation	Sites should take and save a screenshot of the VBECS Help, About window after the Test installation is performed. This displays the VBECS updated version information.

Production Account Upgrade to VBECS 2.3.2 Revision B	
Required Patch Installation	VistA Patch: N/A Server Patch: VBECS 2.3.2 Revision B
Installation Process for VBECS 2.3.2 Rev B	Installed by the BBM team. Production installation does not require participation from the site contacts. A small number of sites will be installed each day over several days. The schedule of installation dates will be communicated through a ListServ announcement.
Expected Downtime	You will be able to use VBECS during the patch installation. VBECS installation on your production account only lasts a few minutes and is invisible to users. If you encounter any disruption or errors while viewing or printing reports during the installation, try again after a few minutes.
Installation Communication for VBECS 2.3.2 Rev B	ListServ message will be sent after each region has been installed into Production.
Site Responsibility	<ul style="list-style-type: none"> Perform local validation, training, and set-up requirements prior to Production installation. Join VBECS-L message board on ListServ, if needed. Please communicate any changes to your site supervisor and Point of Contact (POC) since the last patch install to the BBM team to the email group “VA OIT BBM Team”.
Site Record of Patch Installation	Sites should take and save a screenshot of the VBECS Help, About window after Production installation is performed. This displays the VBECS updated version information.

Validation Planning

The following is a flowchart to help assess changes for validation planning.

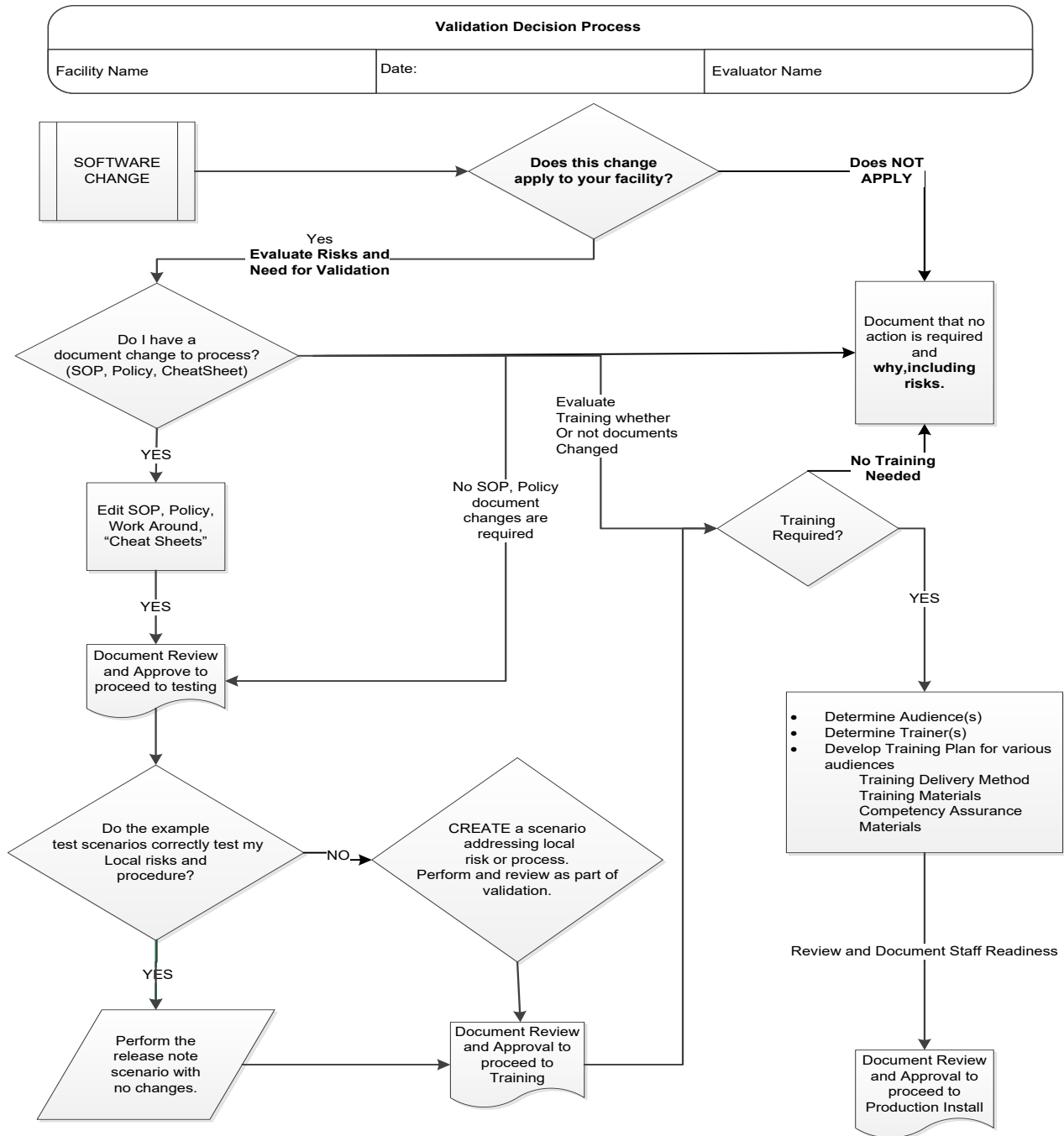


Table 1: Updates by Option

When performing validation of updates in Test Accounts, coordinate with local IT for policies pertaining to the availability of background jobs needed to support validations. In some cases, background jobs may need to be started.

ID	Option	Problem Summary	Change Summary	Validation Scenario	Change applies to my facility. (Y/N)	Local risk Assessment (Low, Med, High)	SOP revision required. If yes, identify it.	Staff training needed. (Y/N)	Scenarios or validation must be performed. (Y/N)
1	Cost Accounting Report and Unit History Report	<p>If a blood supplier name changes, previous blood inventory would reflect the new blood supplier name even if it was supplied using the original supplier.</p> <p>Note: If a tester uses the same collection facility as the shipper and the collection facility name changes after a unit is shipped in and before a unit is shipped out; the collection facility on the report will reflect the new name instead of the old name. This is a defect that will be fixed in VBECS 2.3.2 Rev C.</p>	<p>Previous blood inventory will display the original supplier name. This correction applies to past data entry as well as future.</p>	<p>Enter a unit into an incoming shipment. Record the associated blood supplier name and entry date. Change the blood supplier name. Ship that same unit out using outgoing shipment. Verify that the correct blood supplier name prints in the incoming and outgoing shipment sections of the Cost Accounting and Unit History Reports.</p> <p>Enter another unit into an incoming shipment using a different existing blood supplier. Record that blood supplier name and entry date. Process an outgoing shipment for that same unit.</p> <p>On another day, change that same blood supplier name from the previous step to a new name and enter another unit into an incoming shipment then process an outgoing shipment for that same unit.</p> <p>Print Cost Accounting Report and Unit History Report including the Incoming Shipment and Outgoing Shipment sections for the dates where you set up the data above. Verify that the name of the shipper for incoming shipment and outgoing shipment reflects the name that was valid during the shipment even if it was changed afterwards.</p>					

ID	Option	Problem Summary	Change Summary	Validation Scenario	Change applies to my facility. (Y/N)	Local risk Assessment (Low, Med, High)	SOP revision required. If yes, identify it.	Staff training needed. (Y/N)	Scenarios or validation must be performed. (Y/N)
2	Cost Accounting Report	For blood units modified in VBECS the Incoming Shipment section displays modified product code and modification cost instead of the original product code and cost entered during the Incoming Shipment.	Incoming shipment section now reflects the original blood product code and cost name.	<ol style="list-style-type: none"> 1) Login a frozen product into VBECS (FFP or RBC) and record its original product code and cost. 2) Thaw this product in VBECS and run Cost Accounting Report. 3) Verify that Incoming Shipment section of the report shows the original product code and cost recorded in step 1. 					
3	Select Units	Compatible Limited and Quarantined units were not displayed to the user.	<p>Compatible Limited and Quarantined units are displayed but are not selectable.</p> <p>This change was made to alleviate situations in which the blood bank tech is selecting a wrong unit for the patient if there are two blood units with the same Unit ID present and one of them was mistakenly not ABO/Rh confirmed.</p>	<ol style="list-style-type: none"> 1) Place RBC order in CPRS and accept it in VBECS along with TAS (refer to Appendix A: Place and Sign a VBECS Order (via CPRS GUI) if you don't know how to place orders in CPRS). 2) Complete TAS. 3) Login a few blood units into VBECS that are ABO/Rh compatible with patient for whom you placed an order in Step 1. 4) Perform ABO/Rh confirmation on all blood units except one. 5) Mark one of the ABO/Rh confirmed units as quarantined. 6) Attempt to select blood units for the order from Step 1. Do not scan units but use the blood unit picklist (click the Find button to display blood unit picklist). 7) Verify that compatible Limited and Quarantined units are displayed, in the picklist but not selectable for the patient. 					

ID	Option	Problem Summary	Change Summary	Validation Scenario	Change applies to my facility. (Y/N)	Local risk Assessment (Low, Med, High)	SOP revision required. If yes, identify it.	Staff training needed. (Y/N)	Scenarios or validation must be performed. (Y/N)
4	Division Transfusion Report	The list of issuing physicians, issue-to locations, and treating specialties included data from all divisions.	Only division-specific data are shown.	Verification should only be done by multidivisional sites. Verify that the list of issue-to locations, physicians, and treating specialties in Division Transfusion Report criteria dialog contains only items from your division.					
5	Blood Products	Update the blood product table with new ICCBBA blood product codes April 2019 through September 2019.	VBECS contains additional ICCBBA blood product codes for use from E9557 to E9656. For a full list of new product codes, see Table 2: New ICCBBA Blood Products.	Use Tools, Blood Products to associate the blood products with an active facility. Repeat as needed for each product code that you may receive from your supplier.					
6	Blood Products	Maximum Storage Time was set to 456 days and 6 hours (10950 hours).	Maximum Storage Time for Lyophilized PLATELET-RICH PLASMA (E8594) and Lyophilized Apheresis POOLED FRESH FROZEN PLASMA (E9494) changed to 456 days (10944 hours).	Validation is not required.					

ID	Option	Problem Summary	Change Summary	Validation Scenario	Change applies to my facility. (Y/N)	Local risk Assessment (Low, Med, High)	SOP revision required. If yes, identify it.	Staff training needed. (Y/N)	Scenarios or validation must be performed. (Y/N)
7	Blood Products	Riboflavin treated blood products do not satisfy patient's transfusion requirement for "Pre-treated to prevent GVHD".	<p>Product attribute V0021006 (Riboflavin-treated) is now set to satisfy transfusion requirement for "Pre-treated to prevent GVHD".</p> <p>Applies to future use once Riboflavin is approved for use in the US for "Pre-treated to prevent GVHD".</p>	Validation is not required.					
8	Blood Products	Product attributes were set to not allow modification.	<p>Product attributes V0001027 (None/500mL/refg) and V0001251 (None/300mL/refg) are now set to allow modification for their associated blood products.</p> <p>These attributes are found in RBCs. For a full list of affected product codes, see Table 3: Products set to now allow modification.</p> <p>Note: These products still may not have a valid modification target in some instances.</p>	Validation is not required.					

Table 2: New ICCBBA Blood Products

Component	Product Code	Modifiable	Product Type	Long Name	Short Name	Maximum Storage Hours
FRESH FROZEN PLASMA	E9557	Yes	Apheresis POOLED FRESH FROZEN PLASMA	Apheresis POOLED FRESH FROZEN PLASMA ACD-A/XX/<=-25C Psoralen-treated	FFP AFR Pool ACD-A Psoralen	8760
RED BLOOD CELLS	E9558	Yes	RED BLOOD CELLS	RED BLOOD CELLS CPD>AS5/350mL/refg ResLeu:<1.2E9	RBC CPD>AS5 LUKOPR	1008
RED BLOOD CELLS	E9559	Yes	RED BLOOD CELLS	RED BLOOD CELLS CPD>AS5/350mL/refg ResLeu:<1E6	RBC CPD>AS5 LUKOPR	1008
RED BLOOD CELLS	E9560	Yes	RED BLOOD CELLS	RED BLOOD CELLS CPD>AS5/350mL/refg Irradiated ResLeu:<1E6	RBC CPD>AS5 IRD LUKOPR	672
FRESH FROZEN PLASMA	E9561	No	FRESH FROZEN PLASMA	FRESH FROZEN PLASMA CPD/450mL/<=-25C ResLeu:<1E6 Frozen <=8h Quar:>=112d/retested	FFP CPD LUKOPR QUAR	8760
FRESH FROZEN PLASMA	E9562	Yes	FRESH FROZEN PLASMA	FRESH FROZEN PLASMA CPD/450mL/<=-25C ResLeu:<1E6 Frozen <=24h	FFP CPD LUKOPR	8760
FRESH FROZEN PLASMA	E9563	No	FRESH FROZEN PLASMA	FRESH FROZEN PLASMA CPD/450mL/<=-25C ResLeu:<1E6 Frozen <=24h Quar:>=112d/retested	FFP CPD LUKOPR QUAR	8760
FRESH FROZEN PLASMA	E9564	Yes	Thawed FRESH FROZEN PLASMA	Thawed FRESH FROZEN PLASMA CPD/450mL/refg Methylene blue-treated	FFP Thaw CPD Methyl Blue	24
RED BLOOD CELLS	E9565	Yes	Apheresis RED BLOOD CELLS	Apheresis RED BLOOD CELLS ACD-A>AS3/XX/refg Open ResLeu:<5E6 Saline added	RBC AFR ACD-A>AS3 OPN LUKOPR SAL Add	24
RED BLOOD CELLS	E9566	Yes	Apheresis RED BLOOD CELLS	Apheresis RED BLOOD CELLS ACD-A>AS3/XX/refg Open Irradiated ResLeu:<5E6 Saline added	RBC AFR ACD-A>AS3 OPN IRD LUKOPR SAL Add	24
RED BLOOD CELLS	E9567	Yes	Apheresis RED BLOOD CELLS	Apheresis RED BLOOD CELLS CP2D>AS3/XX/refg Open ResLeu:<5E6 Saline added	RBC AFR CP2D>AS3 OPN LUKOPR SAL Add	24
RED BLOOD CELLS	E9568	Yes	Apheresis RED BLOOD CELLS	Apheresis RED BLOOD CELLS CP2D>AS3/XX/refg Open ResLeu:<5E6 Saline added 1st container	RBC AFR CP2D>AS3 OPN LUKOPR SAL Add 1C	24

Component	Product Code	Modifiable	Product Type	Long Name	Short Name	Maximum Storage Hours
RED BLOOD CELLS	E9569	Yes	Apheresis RED BLOOD CELLS	Apheresis RED BLOOD CELLS CP2D>AS3/XX/refg Open ResLeu:<5E6 Saline added 2nd container	RBC AFR CP2D>AS3 OPN LUKOPR SAL Add 2C	24
RED BLOOD CELLS	E9570	Yes	Apheresis RED BLOOD CELLS	Apheresis RED BLOOD CELLS CP2D>AS3/XX/refg Open Irradiated ResLeu:<5E6 Saline added	RBC AFR CP2D>AS3 OPN IRD LUKOPR SAL Add	24
RED BLOOD CELLS	E9571	Yes	Apheresis RED BLOOD CELLS	Apheresis RED BLOOD CELLS CP2D>AS3/XX/refg Open Irradiated ResLeu:<5E6 Saline added 1st container	RBC AFR CP2D>AS3 OPN IRD LUKOPR SAL Add 1C	24
RED BLOOD CELLS	E9572	Yes	Apheresis RED BLOOD CELLS	Apheresis RED BLOOD CELLS CP2D>AS3/XX/refg Open Irradiated ResLeu:<5E6 Saline added 2nd container	RBC AFR CP2D>AS3 OPN IRD LUKOPR SAL Add 2C	24
RED BLOOD CELLS	E9573	Yes	RED BLOOD CELLS	RED BLOOD CELLS CPD/500mL/refg Open ResLeu:<5E6 Saline added	RBC CPD OPN LUKOPR SAL Add	24
RED BLOOD CELLS	E9574	Yes	RED BLOOD CELLS	RED BLOOD CELLS CPD/500mL/refg Open Irradiated ResLeu:<5E6 Saline added	RBC CPD OPN IRD LUKOPR SAL Add	24
FRESH FROZEN PLASMA	E9575	No	Liquid PLASMA	Liquid PLASMA CPD/XX/<37C Not for tx or mnf ResLeu:<5E6	PLASMA Liq CPD NMT LUKOPR	624
CRYOPRECIPITATE	E9576	No	CRYOPRECIPITATE	CRYOPRECIPITATE None/XX/<=-18C For mnf:noninjectable	CRYO None MNFNI	8760
CRYOPRECIPITATE	E9577	No	POOLED CRYOPRECIPITATE	POOLED CRYOPRECIPITATE None/XX/<=-18C For mnf:noninjectable	CRYO Pool None MNFNI	8760
RED BLOOD CELLS	E9578	Yes	Washed Apheresis RED BLOOD CELLS	Washed Apheresis RED BLOOD CELLS None/XX/refg 1st container	RBC AFR Wash None 1C	24
RED BLOOD CELLS	E9579	Yes	Washed Apheresis RED BLOOD CELLS	Washed Apheresis RED BLOOD CELLS None/XX/refg 2nd container	RBC AFR Wash None 2C	24
RED BLOOD CELLS	E9580	Yes	Washed Apheresis RED BLOOD CELLS	Washed Apheresis RED BLOOD CELLS None/XX/refg Irradiated 1st container	RBC AFR Wash None IRD 1C	24
RED BLOOD CELLS	E9581	Yes	Washed Apheresis RED BLOOD CELLS	Washed Apheresis RED BLOOD CELLS None/XX/refg Irradiated 2nd container	RBC AFR Wash None IRD 2C	24
RED BLOOD CELLS	E9582	Yes	Deglycerolized Apheresis RED BLOOD CELLS	Deglycerolized Apheresis RED BLOOD CELLS None/XX/refg 1st container	RBC AFR Deg None 1C	336

Component	Product Code	Modifiable	Product Type	Long Name	Short Name	Maximum Storage Hours
RED BLOOD CELLS	E9583	Yes	Deglycerolized Apheresis RED BLOOD CELLS	Deglycerolized Apheresis RED BLOOD CELLS None/XX/refg 2nd container	RBC AFR Deg None 2C	336
RED BLOOD CELLS	E9584	Yes	Deglycerolized Apheresis RED BLOOD CELLS	Deglycerolized Apheresis RED BLOOD CELLS None/XX/refg Irradiated 1st container	RBC AFR Deg None IRD 1C	336
RED BLOOD CELLS	E9585	Yes	Deglycerolized Apheresis RED BLOOD CELLS	Deglycerolized Apheresis RED BLOOD CELLS None/XX/refg Irradiated 2nd container	RBC AFR Deg None IRD 2C	336
RED BLOOD CELLS	E9586	No	RED BLOOD CELLS	RED BLOOD CELLS CPD/XX/refg For mnf:injectable ResLeu:<5E6 LowVol:anticoag not adj	RBC CPD MNFI LUKOPR LowVol	504
RED BLOOD CELLS	E9587	No	RED BLOOD CELLS	RED BLOOD CELLS CPD/XX/refg For mnf:noninjectable ResLeu:<5E6 LowVol:anticoag not adj	RBC CPD MNFNI LUKOPR LowVol	504
FRESH FROZEN PLASMA	E9588	Yes	Apheresis FRESH FROZEN PLASMA	Apheresis FRESH FROZEN PLASMA ACD-A/XX/<=-25C Irradiated ResLeu:<1E6 >=200mL<400mL Frozen <=6h 1st container	FFP AFR ACD-A IRD LUKOPR 1C	8760
FRESH FROZEN PLASMA	E9589	Yes	Apheresis FRESH FROZEN PLASMA	Apheresis FRESH FROZEN PLASMA ACD-A/XX/<=-25C Irradiated ResLeu:<1E6 >=200mL<400mL Frozen <=6h 2nd container	FFP AFR ACD-A IRD LUKOPR 2C	8760
FRESH FROZEN PLASMA	E9590	Yes	Apheresis FRESH FROZEN PLASMA	Apheresis FRESH FROZEN PLASMA ACD-A/XX/<=-25C Irradiated ResLeu:<1E6 >=200mL<400mL Frozen <=6h 3rd container	FFP AFR ACD-A IRD LUKOPR 3C	8760
FRESH FROZEN PLASMA	E9591	Yes	Apheresis FRESH FROZEN PLASMA	Apheresis FRESH FROZEN PLASMA ACD-A/XX/<=-25C Irradiated ResLeu:<1E6 <200mL Frozen <=6h	FFP AFR ACD-A IRD LUKOPR LowVol	8760
FRESH FROZEN PLASMA	E9592	No	Apheresis FRESH FROZEN PLASMA	Apheresis FRESH FROZEN PLASMA ACD-A/XX/<=-25C Irradiated ResLeu:<1E6 >=200mL<400mL Frozen <=6h 1st container Quar:>=4m/retested	FFP AFR ACD-A IRD LUKOPR 1C QUAR	8760
FRESH FROZEN PLASMA	E9593	No	Apheresis FRESH FROZEN PLASMA	Apheresis FRESH FROZEN PLASMA ACD-A/XX/<=-25C Irradiated ResLeu:<1E6 >=200mL<400mL Frozen <=6h 2nd container Quar:>=4m/retested	FFP AFR ACD-A IRD LUKOPR 2C QUAR	8760

Component	Product Code	Modifiable	Product Type	Long Name	Short Name	Maximum Storage Hours
FRESH FROZEN PLASMA	E9594	No	Apheresis FRESH FROZEN PLASMA	Apheresis FRESH FROZEN PLASMA ACD-A/XX/<=-25C Irradiated ResLeu:<1E6 >=200mL<400mL Frozen <=6h 3rd container Quar:>=4m/retested	FFP AFR ACD-A IRD LUKOPR 3C QUAR	8760
FRESH FROZEN PLASMA	E9595	No	Apheresis FRESH FROZEN PLASMA	Apheresis FRESH FROZEN PLASMA ACD-A/XX/<=-25C Irradiated ResLeu:<1E6 <200 mL Frozen <=6h Quar:>=4m/retested	FFP AFR ACD-A IRD LUKOPR LowVol QUAR	8760
FRESH FROZEN PLASMA	E9596	No	Thawed Apheresis FRESH FROZEN PLASMA	Thawed Apheresis FRESH FROZEN PLASMA ACD-A/XX/rt Irradiated ResLeu:<1E6 >=200mL<400mL Frozen <=6h 1st container Quar:>=4m/retested	FFP AFR Thaw ACD-A IRD LUKOPR 1C QUAR	24
FRESH FROZEN PLASMA	E9597	No	Thawed Apheresis FRESH FROZEN PLASMA	Thawed Apheresis FRESH FROZEN PLASMA ACD-A/XX/rt Irradiated ResLeu:<1E6 >=200mL<400mL Frozen <=6h 2nd container Quar:>=4m/retested	FFP AFR Thaw ACD-A IRD LUKOPR 2C QUAR	24
FRESH FROZEN PLASMA	E9598	No	Thawed Apheresis FRESH FROZEN PLASMA	Thawed Apheresis FRESH FROZEN PLASMA ACD-A/XX/rt Irradiated ResLeu:<1E6 >=200mL<400mL Frozen <=6h 3rd container Quar:>=4m/retested	FFP AFR Thaw ACD-A IRD LUKOPR 3C QUAR	24
FRESH FROZEN PLASMA	E9599	No	Thawed Apheresis FRESH FROZEN PLASMA	Thawed Apheresis FRESH FROZEN PLASMA ACD-A/XX/rt Irradiated ResLeu:<1E6 <200 mL Frozen <=6h Quar:>=4m/retested	FFP AFR Thaw ACD-A IRD LUKOPR LowVol QUAR	24
RED BLOOD CELLS	E9600	No	RED BLOOD CELLS	RED BLOOD CELLS CPD>SAGM/450mL/refg RBC irradiated ResLeu:NS Supernat rem/Plasma added	RBC CPD>SAGM RBC IRD LUKOPR SR/PA	672
RED BLOOD CELLS	E9601	No	RED BLOOD CELLS	RED BLOOD CELLS CPD>SAGM/450mL/refg RBC irradiated ResLeu:<5E6 Supernat rem/Plasma added	RBC CPD>SAGM RBC IRD LUKOPR SR/PA	672
RED BLOOD CELLS	E9602	No	RED BLOOD CELLS	RED BLOOD CELLS CPD>AS1/XX/refg For mnf:injectable ResLeu:<5E6 LowVol:anticoag not adj	RBC CPD>AS1 MNFI LUKOPR LowVol	1008
RED BLOOD CELLS	E9603	No	RED BLOOD CELLS	RED BLOOD CELLS CPD>AS1/XX/refg For mnf:noninjectable ResLeu:<5E6 LowVol:anticoag not adj	RBC CPD>AS1 MNFNI LUKOPR LowVol	1008
PLATELETS	E9604	Yes	Apheresis PLATELETS	Apheresis PLATELETS ACD-A/XX/20-24C ResLeu:<1E6 Plasma reduced Riboflavin-treated	PLT AFR ACD-A LUKOPR PLS Red Ribo	120

Component	Product Code	Modifiable	Product Type	Long Name	Short Name	Maximum Storage Hours
PLATELETS	E9605	No	Apheresis PLATELETS	Apheresis PLATELETS ACD-A/XX/20-24C Not for tx or mnf ResLeu:<5E6 <3E11 plts	PLT AFR ACD-A NMT LUKOPR	120
PLATELETS	E9606	Yes	Washed Apheresis PLATELETS	Washed Apheresis PLATELETS None/XX/20-24C ResLeu:<5E6	PLT AFR Wash None LUKOPR	4
PLATELETS	E9607	Yes	Washed Apheresis PLATELETS	Washed Apheresis PLATELETS None/XX/20-24C ResLeu:<5E6 1st container	PLT AFR Wash None LUKOPR 1C	4
PLATELETS	E9608	Yes	Washed Apheresis PLATELETS	Washed Apheresis PLATELETS None/XX/20-24C ResLeu:<5E6 2nd container	PLT AFR Wash None LUKOPR 2C	4
PLATELETS	E9609	Yes	Washed Apheresis PLATELETS	Washed Apheresis PLATELETS None/XX/20-24C ResLeu:<5E6 3rd container	PLT AFR Wash None LUKOPR 3C	4
PLATELETS	E9610	Yes	Washed Apheresis PLATELETS	Washed Apheresis PLATELETS None/XX/20-24C Irradiated ResLeu:<5E6	PLT AFR Wash None IRD LUKOPR	4
PLATELETS	E9611	Yes	Apheresis PLATELETS	Apheresis PLATELETS ACD-A>PAS-C/XX/20-24C Open ResLeu:<5E6 Plasma reduced/Saline added Psoralen-treated	PLT AFR ACD-A>PAS-C OPN LUKOPR PLS Red/SAL Add Psoraln	4
PLATELETS	E9612	Yes	Apheresis PLATELETS	Apheresis PLATELETS ACD-A>PAS-C/XX/20-24C Open ResLeu:<5E6 Plasma reduced/Saline added 1st container Psoralen-treated	PLT AFR ACD-A>PAS-C OPN LUKOPR PLS Red/SAL Add 1C Psoraln	4
PLATELETS	E9613	Yes	Apheresis PLATELETS	Apheresis PLATELETS ACD-A>PAS-C/XX/20-24C Open ResLeu:<5E6 Plasma reduced/Saline added 2nd container Psoralen-treated	PLT AFR ACD-A>PAS-C OPN LUKOPR PLS Red/SAL Add 2C Psoraln	4
PLATELETS	E9614	Yes	Apheresis PLATELETS	Apheresis PLATELETS ACD-A>PAS-C/XX/20-24C Open ResLeu:<5E6 Plasma reduced/Saline added 3rd container Psoralen-treated	PLT AFR ACD-A>PAS-C OPN LUKOPR PLS Red/SAL Add 3C Psoraln	4
PLATELETS	E9615	Yes	POOLED PLATELETS	POOLED PLATELETS CPD/XX/20-24C ResLeu:<1E6 Buffy coat plts prep 6 units Psoralen-treated	PLT Pool CPD LUKOPR BUFCT 6U Psoraln	120
RED BLOOD CELLS	E9616	Yes	Deglycerolized Apheresis RED BLOOD CELLS	Deglycerolized Apheresis RED BLOOD CELLS AS3/XX/refg Open ResLeu:<5E6	RBC AFR Deg AS3 OPN LUKOPR	24
PLATELETS	E9617	Yes	Apheresis PLATELETS	Apheresis PLATELETS ACD-A/XX/20-24C ResLeu:<5E6 <3E11 plts Bacterial test D5	PLT AFR ACD-A LUKOPR BacTest D5	24
PLATELETS	E9618	Yes	Apheresis PLATELETS	Apheresis PLATELETS ACD-A/XX/20-24C ResLeu:<5E6 <3E11 plts Bacterial test D6	PLT AFR ACD-A LUKOPR BacTest D6	24
PLATELETS	E9619	Yes	Apheresis PLATELETS	Apheresis PLATELETS ACD-A/XX/20-24C ResLeu:<5E6 <3E11 plts Bacterial test D7	PLT AFR ACD-A LUKOPR BacTest D7	24
PLATELETS	E9620	Yes	Apheresis PLATELETS	Apheresis PLATELETS ACD-A/XX/20-24C Irradiated ResLeu:<5E6 <3E11 plts Bacterial test D5	PLT AFR ACD-A IRD LUKOPR BacTest D5	24

Component	Product Code	Modifiable	Product Type	Long Name	Short Name	Maximum Storage Hours
PLATELETS	E9621	Yes	Apheresis PLATELETS	Apheresis PLATELETS ACD-A/XX/20-24C Irradiated ResLeu:<5E6 <3E11 plts Bacterial test D6	PLT AFR ACD-A IRD LUKOPR BacTest D6	24
PLATELETS	E9622	Yes	Apheresis PLATELETS	Apheresis PLATELETS ACD-A/XX/20-24C Irradiated ResLeu:<5E6 <3E11 plts Bacterial test D7	PLT AFR ACD-A IRD LUKOPR BacTest D7	24
RED BLOOD CELLS	E9623	No	RED BLOOD CELLS	RED BLOOD CELLS CPD>SAGM/XX/refg ResLeu:<5E6	RBC CPD>SAGM LUKOPR	1008
RED BLOOD CELLS	E9624	No	RED BLOOD CELLS	RED BLOOD CELLS CPD>SAGM/XX/refg Not for tx or mnf ResLeu:<5E6	RBC CPD>SAGM NMT LUKOPR	1008
RED BLOOD CELLS	E9625	No	RED BLOOD CELLS	RED BLOOD CELLS CPD>SAGM/XX/refg Irradiated ResLeu:<5E6	RBC CPD>SAGM IRD LUKOPR	672
CRYOPRECIPITATE	E9626	Yes	CRYOPRECIPITATE	CRYOPRECIPITATE CPD/XX/=<=-18C	CRYO CPD	8760
RED BLOOD CELLS	E9627	Yes	Deglycerolized RED BLOOD CELLS	Deglycerolized RED BLOOD CELLS AS3/450mL/refg Open	RBC Deg AS3 OPN	24
RED BLOOD CELLS	E9628	Yes	RED BLOOD CELLS	RED BLOOD CELLS CPD>AS5/350mL/refg Buffy coat removed	RBC CPD>AS5 BuF Rem	1008
PLATELETS	E9629	No	POOLED PLATELETS	POOLED PLATELETS PAS-E/XX/20-24C ResLeu:<1E6 Buffy coat plts prep 6 units Riboflavin-treated	PLT Pool PAS-E LUKOPR BUFCT 6U Ribo	120
PLATELETS	E9630	Yes	Apheresis PLATELETS	Apheresis PLATELETS ACD-A/XX/20-24C Irradiated ResLeu:<5E6 1st container <3E11 plts Psoralen-treated	PLT AFR ACD-A IRD LUKOPR 1C Psoraln	120
PLATELETS	E9631	Yes	Apheresis PLATELETS	Apheresis PLATELETS ACD-A/XX/20-24C Irradiated ResLeu:<5E6 2nd container <3E11 plts Psoralen-treated	PLT AFR ACD-A IRD LUKOPR 2C Psoraln	120
PLATELETS	E9632	Yes	Apheresis PLATELETS	Apheresis PLATELETS ACD-A/XX/20-24C Irradiated ResLeu:<5E6 3rd container <3E11 plts Psoralen-treated	PLT AFR ACD-A IRD LUKOPR 3C Psoraln	120
PLATELETS	E9633	Yes	Apheresis PLATELETS	Apheresis PLATELETS ACD-A/XX/refg ResLeu:<5E6 Psoralen-treated	PLT AFR ACD-A LUKOPR Psoraln	120
PLATELETS	E9634	Yes	Apheresis PLATELETS	Apheresis PLATELETS ACD-A/XX/refg ResLeu:<5E6 1st container Psoralen-treated	PLT AFR ACD-A LUKOPR 1C Psoraln	120

Component	Product Code	Modifiable	Product Type	Long Name	Short Name	Maximum Storage Hours
PLATELETS	E9635	Yes	Apheresis PLATELETS	Apheresis PLATELETS ACD-A/XX/refg ResLeu:<5E6 2nd container Psoralen-treated	PLT AFR ACD-A LUKOPR 2C Psoraln	120
PLATELETS	E9636	Yes	Apheresis PLATELETS	Apheresis PLATELETS ACD-A/XX/refg ResLeu:<5E6 3rd container Psoralen-treated	PLT AFR ACD-A LUKOPR 3C Psoraln	120
PLATELETS	E9637	Yes	Apheresis PLATELETS	Apheresis PLATELETS ACD-A/XX/refg ResLeu:<5E6 <3E11 plts Psoralen-treated	PLT AFR ACD-A LUKOPR Psoraln	120
PLATELETS	E9638	Yes	Apheresis PLATELETS	Apheresis PLATELETS ACD-A>PAS-C/XX/refg ResLeu:<5E6 <3E11 plts Psoralen-treated	PLT AFR ACD-A>PAS-C LUKOPR Psoraln	120
FRESH FROZEN PLASMA	E9639	Yes	Liquid PLASMA	Liquid PLASMA CPD/XX/refg Irradiated ResLeu:<5E6	PLASMA Liq CPD IRD LUKOPR	624
PLATELETS	E9640	Yes	POOLED PLATELETS	POOLED PLATELETS CP2D/XX/20-24C ResLeu:<5E6 Bacterial test D5	PLT Pool CP2D LUKOPR BacTest D5	24
PLATELETS	E9641	Yes	POOLED PLATELETS	POOLED PLATELETS CP2D/XX/20-24C Irradiated ResLeu:<5E6 Bacterial test D5	PLT Pool CP2D IRD LUKOPR BacTest D5	24
PLATELETS	E9642	Yes	POOLED PLATELETS	POOLED PLATELETS CPD/XX/20-24C ResLeu:<5E6 6 units Bacterial test D5	PLT Pool CPD LUKOPR 6U BacTest D5	24
PLATELETS	E9643	Yes	POOLED PLATELETS	POOLED PLATELETS CPD/XX/20-24C Irradiated ResLeu:<5E6 6 units Bacterial test D5	PLT Pool CPD IRD LUKOPR 6U BacTest D5	24
PLATELETS	E9644	Yes	Apheresis PLATELETS	Apheresis PLATELETS ACD-A>PAS-C/XX/20-24C ResLeu:<5E6 Bacterial test D5	PLT AFR ACD-A>PAS-C LUKOPR BacTest D5	24
PLATELETS	E9645	Yes	Apheresis PLATELETS	Apheresis PLATELETS ACD-A>PAS-C/XX/20-24C ResLeu:<5E6 1st container Bacterial test D5	PLT AFR ACD-A>PAS-C LUKOPR 1C BacTest D5	24
PLATELETS	E9646	Yes	Apheresis PLATELETS	Apheresis PLATELETS ACD-A>PAS-C/XX/20-24C ResLeu:<5E6 2nd container Bacterial test D5	PLT AFR ACD-A>PAS-C LUKOPR 2C BacTest D5	24
PLATELETS	E9647	Yes	Apheresis PLATELETS	Apheresis PLATELETS ACD-A>PAS-C/XX/20-24C ResLeu:<5E6 3rd container Bacterial test D5	PLT AFR ACD-A>PAS-C LUKOPR 3C BacTest D5	24
PLATELETS	E9648	Yes	Apheresis PLATELETS	Apheresis PLATELETS ACD-A>PAS-C/XX/20-24C Irradiated ResLeu:<5E6 Bacterial test D5	PLT AFR ACD-A>PAS-C IRD LUKOPR BacTest D5	24
PLATELETS	E9649	Yes	Apheresis PLATELETS	Apheresis PLATELETS ACD-A>PAS-C/XX/20-24C Irradiated ResLeu:<5E6 1st container Bacterial test D5	PLT AFR ACD-A>PAS-C IRD LUKOPR 1C BacTest D5	24
PLATELETS	E9650	Yes	Apheresis PLATELETS	Apheresis PLATELETS ACD-A>PAS-C/XX/20-24C Irradiated ResLeu:<5E6 2nd container Bacterial test D5	PLT AFR ACD-A>PAS-C IRD LUKOPR 2C BacTest D5	24

Component	Product Code	Modifiable	Product Type	Long Name	Short Name	Maximum Storage Hours
PLATELETS	E9651	Yes	Apheresis PLATELETS	Apheresis PLATELETS ACD-A>PAS-C/XX/20-24C Irradiated ResLeu:<5E6 3rd container Bacterial test D5	PLT AFR ACD-A>PAS-C IRD LUKOPR 3C BacTest D5	24
PLATELETS	E9652	Yes	Apheresis PLATELETS	Apheresis PLATELETS ACD-A>PAS-C/XX/20-24C ResLeu:<5E6 <3E11 plts Bacterial test D5	PLT AFR ACD-A>PAS-C LUKOPR BacTest D5	24
PLATELETS	E9653	Yes	Apheresis PLATELETS	Apheresis PLATELETS ACD-A>PAS-C/XX/20-24C Irradiated ResLeu:<5E6 <3E11 plts Bacterial test D5	PLT AFR ACD-A>PAS-C IRD LUKOPR BacTest D5	24
PLATELETS	E9654	Yes	Apheresis PLATELETS	Apheresis PLATELETS ACD-A>PAS-C/XX/20-24C Irradiated ResLeu:<5E6 1st container <3E11 plts Psoralen-treated	PLT AFR ACD-A>PAS-C IRD LUKOPR 1C Psoraln	120
PLATELETS	E9655	Yes	Apheresis PLATELETS	Apheresis PLATELETS ACD-A>PAS-C/XX/20-24C Irradiated ResLeu:<5E6 2nd container <3E11 plts Psoralen-treated	PLT AFR ACD-A>PAS-C IRD LUKOPR 2C Psoraln	120
PLATELETS	E9656	Yes	Apheresis PLATELETS	Apheresis PLATELETS ACD-A>PAS-C/XX/20-24C Irradiated ResLeu:<5E6 3rd container <3E11 plts Psoralen-treated	PLT AFR ACD-A>PAS-C IRD LUKOPR 3C Psoraln	120

Table 3: Products set to now allow modification

Component	Product Code	Modifiable	Product Type	Long Name	Short Name	Maximum Storage Hours
RED BLOOD CELLS	E0482	Yes	Washed RED BLOOD CELLS	Washed RED BLOOD CELLS None/500mL/refg Open	RBC Wash None OPN	24
RED BLOOD CELLS	E0483	Yes	Washed RED BLOOD CELLS	Washed RED BLOOD CELLS None/500mL/refg Open Irradiated	RBC Wash None OPN IRD	24
RED BLOOD CELLS	E0484	Yes	Washed RED BLOOD CELLS	Washed RED BLOOD CELLS None/500mL/refg Open Irradiated ResLeu:<5E6	RBC Wash None OPN IRD LUKOPR	24
RED BLOOD CELLS	E0485	Yes	Washed RED BLOOD CELLS	Washed RED BLOOD CELLS None/500mL/refg Open Irradiated Albumin added	RBC Wash None OPN IRD ALB Add	24
RED BLOOD CELLS	E0486	Yes	Washed RED BLOOD CELLS	Washed RED BLOOD CELLS None/500mL/refg Open Irradiated Plasma added	RBC Wash None OPN IRD PA	24

Component	Product Code	Modifiable	Product Type	Long Name	Short Name	Maximum Storage Hours
RED BLOOD CELLS	E0487	Yes	Washed RED BLOOD CELLS	Washed RED BLOOD CELLS None/500mL/refg Open ResLeu:<5E6	RBC Wash None OPN LUKOPR	24
RED BLOOD CELLS	E0488	Yes	Washed RED BLOOD CELLS	Washed RED BLOOD CELLS None/500mL/refg Open Albumin added	RBC Wash None OPN ALB Add	24
RED BLOOD CELLS	E0489	Yes	Washed RED BLOOD CELLS	Washed RED BLOOD CELLS None/500mL/refg Open Plasma added	RBC Wash None OPN PA	24
RED BLOOD CELLS	E0537	Yes	Deglycerolized RED BLOOD CELLS	Deglycerolized RED BLOOD CELLS None/500mL/refg Open	RBC Deg None OPN	24
RED BLOOD CELLS	E0538	Yes	Deglycerolized RED BLOOD CELLS	Deglycerolized RED BLOOD CELLS None/500mL/refg Open Irradiated	RBC Deg None OPN IRD	24
RED BLOOD CELLS	E0539	Yes	Deglycerolized RED BLOOD CELLS	Deglycerolized RED BLOOD CELLS None/500mL/refg Open Irradiated Albumin added	RBC Deg None OPN IRD ALB Add	24
RED BLOOD CELLS	E0540	Yes	Deglycerolized RED BLOOD CELLS	Deglycerolized RED BLOOD CELLS None/500mL/refg Open Irradiated Plasma added	RBC Deg None OPN IRD PA	24
RED BLOOD CELLS	E0541	Yes	Deglycerolized RED BLOOD CELLS	Deglycerolized RED BLOOD CELLS None/500mL/refg Open Albumin added	RBC Deg None OPN ALB Add	24
RED BLOOD CELLS	E0542	Yes	Deglycerolized RED BLOOD CELLS	Deglycerolized RED BLOOD CELLS None/500mL/refg Open Plasma added	RBC Deg None OPN PA	24
RED BLOOD CELLS	E0558	Yes	Deglycerolized Rejuvenated RED BLOOD CELLS	Deglycerolized Rejuvenated RED BLOOD CELLS None/500mL/refg Open	RBC Deg Rej None OPN	24

Component	Product Code	Modifiable	Product Type	Long Name	Short Name	Maximum Storage Hours
RED BLOOD CELLS	E0559	Yes	Deglycerolized Rejuvenated RED BLOOD CELLS	Deglycerolized Rejuvenated RED BLOOD CELLS None/500mL/refg Open Irradiated	RBC Deg Rej None OPN IRD	24
RED BLOOD CELLS	E0560	Yes	Deglycerolized Rejuvenated RED BLOOD CELLS	Deglycerolized Rejuvenated RED BLOOD CELLS None/500mL/refg Open Irradiated Albumin added	RBC Deg Rej None OPN IRD ALB Add	24
RED BLOOD CELLS	E0561	Yes	Deglycerolized Rejuvenated RED BLOOD CELLS	Deglycerolized Rejuvenated RED BLOOD CELLS None/500mL/refg Open Irradiated Plasma added	RBC Deg Rej None OPN IRD PA	24
RED BLOOD CELLS	E0562	Yes	Deglycerolized Rejuvenated RED BLOOD CELLS	Deglycerolized Rejuvenated RED BLOOD CELLS None/500mL/refg Open Albumin added	RBC Deg Rej None OPN ALB Add	24
RED BLOOD CELLS	E0563	Yes	Deglycerolized Rejuvenated RED BLOOD CELLS	Deglycerolized Rejuvenated RED BLOOD CELLS None/500mL/refg Open Plasma added	RBC Deg Rej None OPN PA	24
RED BLOOD CELLS	E0585	Yes	Rejuvenated RED BLOOD CELLS	Rejuvenated RED BLOOD CELLS None/500mL/refg	RBC Rej None	24
RED BLOOD CELLS	E0588	Yes	Rejuvenated RED BLOOD CELLS	Rejuvenated RED BLOOD CELLS None/500mL/refg Open	RBC Rej None OPN	24
RED BLOOD CELLS	E0589	Yes	Rejuvenated RED BLOOD CELLS	Rejuvenated RED BLOOD CELLS None/500mL/refg Open Irradiated	RBC Rej None OPN IRD	24

Component	Product Code	Modifiable	Product Type	Long Name	Short Name	Maximum Storage Hours
RED BLOOD CELLS	E0590	Yes	Rejuvenated RED BLOOD CELLS	Rejuvenated RED BLOOD CELLS None/500mL/refg Open Albumin added	RBC Rej None OPN ALB Add	24
RED BLOOD CELLS	E0591	Yes	Rejuvenated RED BLOOD CELLS	Rejuvenated RED BLOOD CELLS None/500mL/refg Open Plasma added	RBC Rej None OPN PA	24
RED BLOOD CELLS	E0592	Yes	Rejuvenated RED BLOOD CELLS	Rejuvenated RED BLOOD CELLS None/500mL/refg Open Supernat rem	RBC Rej None OPN SR	24
RED BLOOD CELLS	E0593	Yes	Rejuvenated RED BLOOD CELLS	Rejuvenated RED BLOOD CELLS None/500mL/refg Open Supernat rem/Plasma added	RBC Rej None OPN SR/PA	24
RED BLOOD CELLS	E0594	Yes	Rejuvenated RED BLOOD CELLS	Rejuvenated RED BLOOD CELLS None/500mL/refg Irradiated	RBC Rej None IRD	24
RED BLOOD CELLS	E0595	Yes	Rejuvenated RED BLOOD CELLS	Rejuvenated RED BLOOD CELLS None/500mL/refg Albumin added	RBC Rej None ALB Add	24
RED BLOOD CELLS	E0596	Yes	Rejuvenated RED BLOOD CELLS	Rejuvenated RED BLOOD CELLS None/500mL/refg Plasma added	RBC Rej None PA	24
RED BLOOD CELLS	E0597	Yes	Rejuvenated RED BLOOD CELLS	Rejuvenated RED BLOOD CELLS None/500mL/refg Supernat rem	RBC Rej None SR	24
RED BLOOD CELLS	E0598	Yes	Rejuvenated RED BLOOD CELLS	Rejuvenated RED BLOOD CELLS None/500mL/refg Supernat rem/Plasma added	RBC Rej None SR/PA	24
RED BLOOD CELLS	E4200	Yes	Deglycerolized RED BLOOD CELLS	Deglycerolized RED BLOOD CELLS None/500mL/refg Open ResLeu:<5E6	RBC Deg None OPN LUKOPR	24

Component	Product Code	Modifiable	Product Type	Long Name	Short Name	Maximum Storage Hours
RED BLOOD CELLS	E4201	Yes	Deglycerolized RED BLOOD CELLS	Deglycerolized RED BLOOD CELLS None/500mL/refg Open Irradiated ResLeu:<5E6	RBC Deg None OPN IRD LUKOPR	24
RED BLOOD CELLS	E5796	Yes	Washed RED BLOOD CELLS	Washed RED BLOOD CELLS None/500mL/refg Open Irradiated ResLeu:<5E6 Albumin added	RBC Wash None OPN IRD LUKOPR ALB Add	24
RED BLOOD CELLS	E9517	Yes	Washed RED BLOOD CELLS	Washed RED BLOOD CELLS None/300mL/refg	RBC Wash None	24
RED BLOOD CELLS	E9518	Yes	Washed RED BLOOD CELLS	Washed RED BLOOD CELLS None/300mL/refg Irradiated	RBC Wash None IRD	24
RED BLOOD CELLS	E9519	Yes	Deglycerolized RED BLOOD CELLS	Deglycerolized RED BLOOD CELLS None/300mL/refg	RBC Deg None	336

Appendix A: Place and Sign a VBECS Order (via CPRS GUI)

Creating a Component Order in CPRS GUI:

- 1) Start CPRS.
- 2) Select certificate, enter PIN if required, or enter the **Access Code** and **Verify Codes**. Click **OK**.
- 3) Select the division where you want the order placed. Click **OK**.
- 4) Enter **Patient ID**. Click **OK**.
- 5) Click on the **Orders** tab. Navigate to and select **File → Update Provider/Location**. Select **Encounter Provider**. Select the **Visit (Patient) Location**. Click **OK**.
- 6) In the **Write Orders** pane (left side of window), select **Blood Banks (VBECS)**.
- 7) Select the **Blood Bank Orders** tab from the **Blood Component and Diagnostic Test Order Form** window.
- 8) Enter the following values in the **Blood Component and/or Diagnostic Test Order Form** window:
 - **Blood Component**
 - **Quantity**
 - **Modifier**
 - **Date/Time Wanted**
 - **Urgency**
 - **Surgery (only where Urgency = PRE-OP)**
 - **Reason For Request**
 - **Comment**
- 9) Click the **Accept Order** button. Click **OK** on the Patient Chart pop-up message.
- 10) Right-click on the newly placed order in the **Active Orders** list. Select **Sign** on menu. Enter your **Signature Code** into the **Electronic Signature Code** field. Click **OK**.
- 11) Click the “X” in the upper-right corner of the **Print Orders** window.

12) Record the **Lab Order #** (number after “LB #” in **Order** column. This is the Lab Order Number used to accession the order.)

Creating a Diagnostics Tests Order in CPRS GUI:

- 1) Navigate to and select **File** → Select New Patient.
- 2) Enter the Patient ID. Click **OK**.
- 3) Navigate to and select **File** → **Update Provider/Location**. Select **Encounter Provider**.
- 4) Select the **Visit (Patient) Location**. Click **OK**.
- 5) Click the **Orders** tab.
- 6) In the **Write Orders** pane (left side of window), select **Blood Banks (VBECS)**.
- 7) Select the **Blood Bank Orders** tab.
- 8) Enter the following values in the **Blood Component and Diagnostic Test Order Form** window:
 - **Diagnostic Test**
 - **Urgency**
 - **Surgery (only where Urgency = PRE-OP)**
 - **Reason For Request**
 - **Comment**
- 9) Click the **Accept Order** button.
- 10) Right-click on the newly placed order in the **Active Orders** list. Select **Sign** on menu. Enter your **Signature Code** into the **Electronic Signature Code** field. Click **OK**.
- 11) Click the “X” in the upper-right corner of the **Print Orders** window.
- 12) Record the **Lab Order #** (number after “LB #” in **Order** column. This is the Lab Order Number used to accession the order.)

Accession a VBECS Order (via VistA)

- 1) Open the VistA session of the test server.
- 2) Enter Access and Verify codes.
- 3) Enter the division where the order was placed.
- 4) System Manager Menu Option: **LAB** Laboratory DHCP Menu.
- 5) Select Laboratory DHCP Menu Option: **ACC** Accessioning menu .
- 6) Select Accessioning menu Option: **Accessioning tests ordered by ward order entry**
- 7) Select Order number: **Lab Order #**
- 8) Is this the correct order? Yes// **YES**
- 9) Collection Date@Time: //Now
- 10) Print labels on: LABLABEL// **home** IRM

Specimen UID generated from accepting the order in Lab

ACCESSION: BB 0304 32 <2940630032>

This page intentionally left blank.

Index

	C	
Customer Support		4
	I	
Introduction		1
	P	
Problems?		4
	R	
Related Manuals and Materials.....		2
	V	
VA Service Desk.....		4

This is the last page of *VistA Blood Establishment Computer Software (VBECS) 2.3.2 Rev B Release Notes*.