



VistA Blood Establishment Computer Software (VBECS) 2.3.2 Rev C

Release Notes Version 1.0

Department of Veterans Affairs
Enterprise Project Management Office

This page intentionally left blank.

Revision History

| Date | Revision | Description | Author |
|----------|----------|--------------------------------------|----------|
| 04/07/20 | 1.0 | VBECS 2.3.2 Rev C Initial version | BBM Team |

This page intentionally left blank.

Table of Contents

- REVISION HISTORY I**
- INTRODUCTION..... 1**
- CHANGED FEATURES AND FUNCTIONS..... 1**
 - UNTESTABLE SYSTEM-LEVEL CORRECTED CODE REQUESTS..... 1
 - VISTA SOFTWARE DEPENDENCIES 1
 - VBECs USER DOCUMENTS 2
- CUSTOMER SUPPORT 4**
 - PROBLEMS?..... 4
 - REFERENCES 4
 - VBECs SHAREPOINT SITE 4
- INSTALLATION QUALIFICATION (IQ) DOCUMENTATION..... 4**
- VALIDATION PLANNING 6**
- TABLE 1: UPDATES BY OPTION..... 7**
- TABLE 2: NEW BLOOD PRODUCTS FOR COVID-19 TREATMENT 8**
- TABLE 3: OTHER BLOOD PRODUCTS NOT RELATED TO COVID-19 TREATMENT 11**
- TABLE 4: POSSIBLE MODIFICATIONS FOR NEWLY ADDED PRODUCTS 15**

This page intentionally left blank.

Introduction

VistA Blood Establishment Computer Software (VBECS) 2.3.2 Rev C Release Notes contains information for changes and corrections made to VBECS in the 2.3.2 Rev C patch.

Perform a local evaluation and risk assessment of the changes to determine the requirements for local validation of the changes, including documentation of the assessment activities. See *Validation Planning*.

Changed Features and Functions

This revision letter patch release is centrally focused around providing blood product updates released from International Council for Commonality in Blood Banking Automation, Inc. (ICCBBA) for the treatment of COVID-19. In addition to that, all other blood products released by ICCBBA with versions 7.30.0 through 7.35.1 are included.

Table 1: Updates by Option provides complete lists of included changes.

For a full list of new product codes see tables 2, 3 and 4.

Untestable System-Level Corrected Code Requests

- None

VistA Software Dependencies

- No VistA patch is required for this blood product-only release.

VBECS User Documents

The following is a list of all the VBECS user documents that apply to the VBECS 2.3.2 Rev C patch release. The **Updated** column identifies the documents that have been updated with this VBECS 2.3.2 Rev C revision letter patch release.

These user documents are available from the VA Software Document Library (VDL) at <https://www.va.gov/vdl/application.asp?appid=182>.

| User Document | Version | Updated |
|---|----------------|----------------|
| <i>VistA Blood Establishment Computer Software (VBECS) 2.3.2 User Guide</i> | 4.0 | No |
| <i>VistA Blood Establishment Computer Software (VBECS) 2.3.2 Administrator User Guide</i> | 3.0 | No |
| <i>VistA Blood Establishment Computer Software (VBECS) 2.3.2 Known Defects and Anomalies</i> | 3.0 | No |
| <i>VistA Blood Establishment Computer Software (VBECS) 2.3.2 Technical Manual-Security Guide</i> | 1.0 | No |
| <i>VistA Blood Establishment Computer Software (VBECS) - Echo Interface Configuration and Setup Guide</i> | 5.0 | No |
| <i>VistA Blood Establishment Computer Software (VBECS) - Erytra Interface Configuration and Setup Guide</i> | 2.0 | No |
| <i>VistA Blood Establishment Computer Software (VBECS) - ProVue Interface Configuration and Setup Guide</i> | 5.0 | No |
| <i>VistA Blood Establishment Computer Software (VBECS) - Vision Interface Configuration and Setup Guide</i> | 4.0 | No |

The following is a list of all the VBECS FAQ documents that apply to the VBECS 2.3.2 Rev C patch release. The **Updated** column identifies the documents that have been updated with this VBECS 2.3.2 Rev C revision letter patch release.

These FAQ documents are available from the VA SharePoint site at **REDACTED**

| FAQ Document | Version | Updated |
|--|----------------|----------------|
| <i>FAQ ABO subgroup Interpretations</i> | 11/22/16 | No |
| <i>FAQ Ancillary VistA Validation</i> | 11/28/17 | No |
| <i>FAQ Antibodies with No Antigen Negative Requirement</i> | 10/15/14 | No |
| <i>FAQ Blood Product Table Processes</i> | 03/28/19 | No |
| <i>FAQ CAP Comprehensive Transfusions Medicine Crossmatch Survey</i> | 11/22/16 | No |
| <i>FAQ Compound Antibodies</i> | 02/27/13 | No |
| <i>FAQ CPRS VBECS Order Details</i> | 04/01/09 | No |
| <i>FAQ Database Conversion Oddballs</i> | 09/15/09 | No |
| <i>FAQ Documenting Unhandled Exceptions</i> | 05/21/07 | No |
| <i>FAQ Handling ABO Incompatible Transfusion Situations</i> | 09/23/14 | No |
| <i>FAQ How to File a New Service Request for Changes to VBECS</i> | 12/08/16 | No |
| <i>FAQ How to take faster screen shots from Remote Desktop Session</i> | 12/17/14 | No |
| <i>FAQ Identifying a Comparable Blood Product Code</i> | 03/28/19 | No |
| <i>FAQ Local Facilities</i> | 12/27/19 | No |
| <i>FAQ Modification Target Not Available</i> | 11/28/17 | No |
| <i>FAQ Multidivisional QC Rack Workaround</i> | 11/28/17 | No |
| <i>FAQ Order Status Clarification</i> | 11/15/17 | No |
| <i>FAQ Polyspecific AHG Not Used for Testing</i> | 01/29/10 | No |
| <i>FAQ Proper Use of PIV Card with VBECS</i> | 11/04/19 | No |
| <i>FAQ QC Setup</i> | 01/29/10 | No |
| <i>FAQ Retesting QC</i> | 11/01/11 | No |
| <i>FAQ Retrieving an Expired Order</i> | 12/07/17 | No |
| <i>FAQ The Difference Between Transfusion Only and Full Service Facility Types</i> | 02/08/10 | No |
| <i>FAQ VBECS Blood Product Hierarchy</i> | 03/28/19 | No |
| <i>FAQ VBECS Computer Crossmatch Decision Tree</i> | 02/08/12 | No |
| <i>FAQ Weak D Policy</i> | 01/11/10 | No |

Customer Support

Problems?

Contact your Local Office of Information Technology (OIT) or Laboratory Information Manager (LIM) if you encounter VistA or CPRS connection problems and for training support **before** contacting the Service Desk (SD).

- Please ensure local contact information is available at all times. SD support will engage Enterprise Operations (EO) personnel as needed.
- Problems with connectivity to VistA and CPRS may require personnel from EO with VBECS server administrator access and VistA IT support access.
- If you experience a Food and Drug Administration (FDA) reportable adverse event (patient death or serious injury) that VBECS may have caused or contributed to, contact the Service Desk directly to enter a ticket for Blood Bank software support.

If the problem remains unresolved after local VistA triage, call the Service Desk (below) and specify the Enterprise Application be set as VistA Blood Establishment Computer Software. This will cause the Assignment group to default to NTL Alert Blood Bank & VBECS, which alerts the Clin2 team.

Service Desk Contact

REDACTED References

- *ISBT128 Standard Technical Specification v 5.10.0*
- *Blood Product Revisions ICCBBA Version 7.35.1, April 2nd 2020*

VBECS SharePoint Site

The VBECS SharePoint site provides a location for additional information related to the VBECS application such as FAQs, installation status, and release history.

REDACTED Installation Qualification (IQ) Documentation

The expedited patch installation process will continue with the installation of VBECS 2.3.2 Rev C.

| Test Account Upgrade to VBECS 2.3.2 Revision C | |
|--|---|
| Required Patch Installation | VistA Patch: N/A Server Patch: VBECS 2.3.2 Revision C |
| Installation Process for VBECS 2.3.2 Rev C | Installed by the BBM team, all sites will be installed in one day. The date of installation will be communicated through a ListServ announcement. |
| Expected Downtime | None |
| Installation Communication for VBECS 2.3.2 Rev C | ListServ message will be sent after all Test accounts have been installed. |
| Site Responsibility | <ul style="list-style-type: none">• Join VBECS-L message board on ListServ, if needed.• Please communicate any changes to your site supervisor and Point of Contact (POC) since the last patch install to the BBM team to the email group "VA OIT BBM Team". |

| | |
|-----------------------------------|--|
| Site Record of Patch Installation | Sites should take and save a screenshot of the VBECS Help, About window after the Test installation is performed. This displays the VBECS updated version information. |
|-----------------------------------|--|

| Production Account Upgrade to VBECS 2.3.2 Revision C | |
|---|---|
| Required Patch Installation | VistA Patch: N/A Server Patch: VBECS 2.3.2 Revision C |
| Installation Process for VBECS 2.3.2 Rev C | Installed by the BBM team, all sites will be installed in one day. The date of installation will be communicated through a ListServ announcement. |
| Expected Downtime | You will be able to use VBECS during the patch installation. VBECS installation on your production account only lasts a few minutes and is invisible to users. If you encounter any disruption or errors while viewing or printing reports during the installation, try again after a few minutes. |
| Installation Communication for VBECS 2.3.2 Rev C | ListServ message will be sent after each region has been installed into Production. |
| Site Responsibility | <ul style="list-style-type: none"> • Perform local validation, training, and set-up requirements prior to Production installation. • Join VBECS-L message board on ListServ, if needed. • Please communicate any changes to your site supervisor and Point of Contact (POC) since the last patch install to the BBM team to the email group “VA OIT BBM Team”. |
| Site Record of Patch Installation | Sites should take and save a screenshot of the VBECS Help, About window after Production installation is performed. This displays the VBECS updated version information. |

Validation Planning

The following is a flowchart to help assess changes for validation planning.

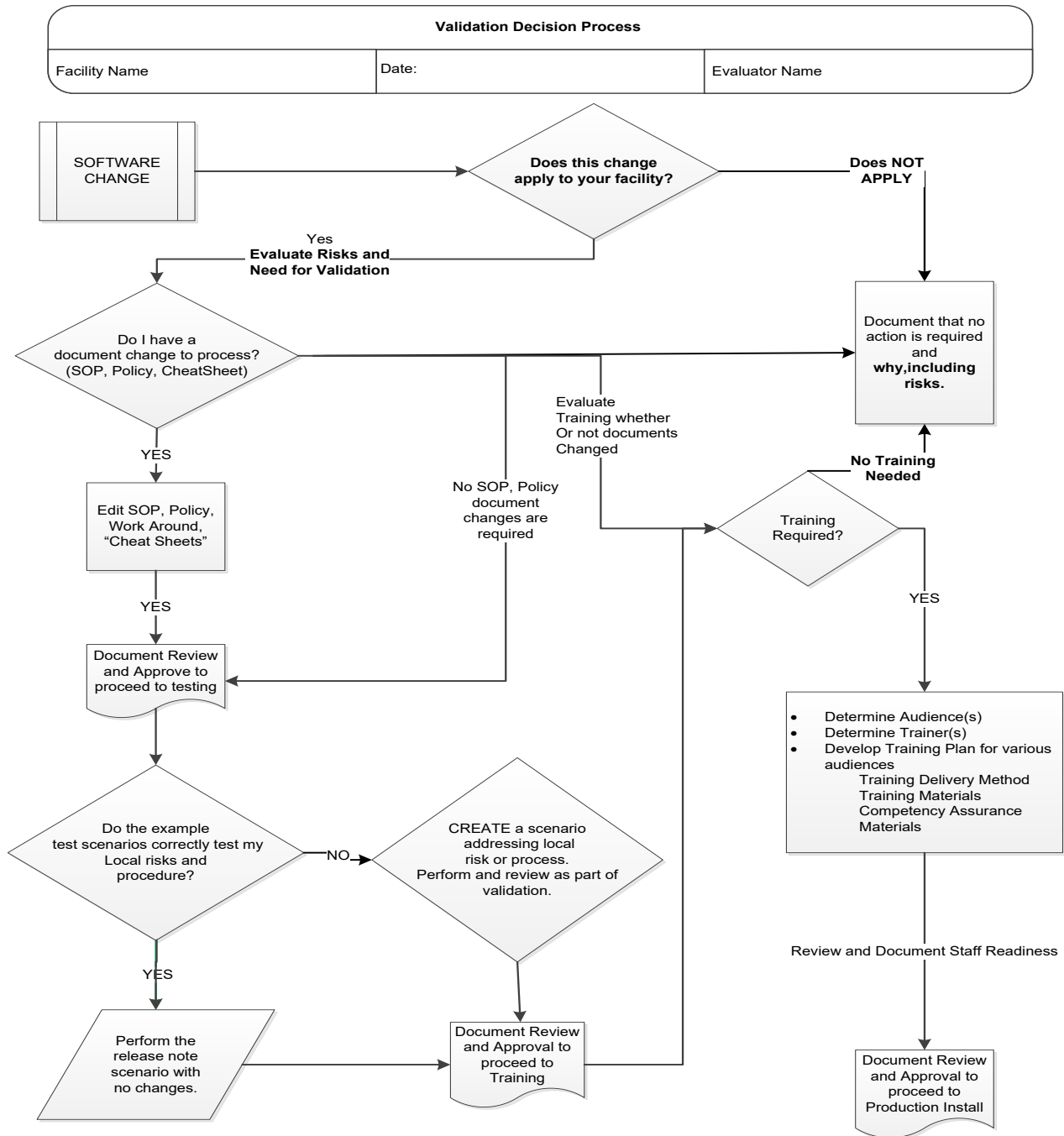


Table 1: Updates by Option

| ID | Option | Problem Summary | Change Summary | Validation Scenario | Change applies to my facility. (Y/N) | Local risk Assessment (Low, Med, High) | SOP revision required. If yes, identify it. | Staff training needed. (Y/N) | Scenarios or validation must be performed. (Y/N) |
|----|----------------|--|--|--|--------------------------------------|--|---|------------------------------|--|
| 1 | Blood Products | Update blood product table with new ICCBBA blood product codes from version 7.30.0 through 7.35.1 with a primary focus on the convalescent plasma products used for treatment of COVID-19. | <p>New blood products were added to VBECS. For a full list of new product codes for COVID-19 treatment, see Table 2.</p> <p>For all other blood products added by ICCBBA that are not related to COVID-19 treatment see Table 3.</p> <p>For possible modifications for new blood products see Table 4.</p> | Validate only blood products that you may receive from your supplier. Use Tools, Blood Products to associate the blood products with an active facility. | | | | | |

Table 2: New Blood Products for COVID-19 Treatment

| Component | Product Code | Modifiable | Product Type | Long Name | Short Name | Max Storage Hours |
|---------------------|--------------|------------|--------------------------------------|---|--|-------------------|
| FRESH FROZEN PLASMA | E9735 | Yes | CONVALESCENT PLASMA | CONVALESCENT PLASMA CPD/XX/<=-18C COVID-19 | PLASMA Conv CPD COVID-19 | 8760 |
| FRESH FROZEN PLASMA | E9736 | Yes | Apheresis CONVALESCENT PLASMA | Apheresis CONVALESCENT PLASMA CPD/XX/<=-18C COVID-19 | PLASMA AFR Conv CPD COVID-19 | 8760 |
| FRESH FROZEN PLASMA | E9738 | Yes | Liquid CONVALESCENT PLASMA | Liquid CONVALESCENT PLASMA CPD/XX/refg COVID-19 | PLASMA Conv Liq CPD COVID-19 | 624 |
| FRESH FROZEN PLASMA | E9739 | Yes | Liquid Apheresis CONVALESCENT PLASMA | Liquid Apheresis CONVALESCENT PLASMA CPD/XX/refg COVID-19 | PLASMA Conv AFR Liq CPD COVID-19 | 120 |
| FRESH FROZEN PLASMA | E9740 | Yes | Apheresis CONVALESCENT PLASMA | Apheresis CONVALESCENT PLASMA NaCitrate/XX/<=-18C COVID-19 | PLASMA AFR Conv NaCit COVID-19 | 8760 |
| FRESH FROZEN PLASMA | E9741 | Yes | Apheresis CONVALESCENT PLASMA | Apheresis CONVALESCENT PLASMA ACD-A/XX/<=-40C Methylene blue-treated COVID-19 | PLASMA AFR Conv ACD-A Methyl Blue COVID-19 | 8760 |
| FRESH FROZEN PLASMA | E9743 | Yes | Apheresis CONVALESCENT PLASMA | Apheresis CONVALESCENT PLASMA NS/XX/<=-25C COVID-19 | PLASMA AFR Conv NS COVID-19 | 8760 |
| FRESH FROZEN PLASMA | E9744 | Yes | Apheresis CONVALESCENT PLASMA | Apheresis CONVALESCENT PLASMA NS/XX/<=-25C Methylene blue-treated COVID-19 | PLASMA AFR Conv NS Methyl Blue COVID-19 | 8760 |
| FRESH FROZEN PLASMA | E9745 | Yes | Apheresis CONVALESCENT PLASMA | Apheresis CONVALESCENT PLASMA NS/XX/<=-25C Psoralen-treated COVID-19 | PLASMA AFR Conv NS Psoralin COVID-19 | 8760 |
| FRESH FROZEN PLASMA | E9746 | Yes | Apheresis CONVALESCENT PLASMA | Apheresis CONVALESCENT PLASMA NS/XX/<=-25C Riboflavin-treated COVID-19 | PLASMA AFR Conv NS Ribo COVID-19 | 8760 |
| FRESH FROZEN PLASMA | E9747 | Yes | Apheresis CONVALESCENT PLASMA | Apheresis CONVALESCENT PLASMA ACD-A/XX/<=-18C COVID-19 | PLASMA AFR Conv ACD-A COVID-19 | 8760 |
| FRESH FROZEN PLASMA | E9748 | Yes | Apheresis CONVALESCENT PLASMA | Apheresis CONVALESCENT PLASMA NS/XX/Frozen COVID-19 | PLASMA AFR Conv NS COVID-19 | 8760 |
| FRESH FROZEN PLASMA | E9749 | Yes | CONVALESCENT PLASMA | CONVALESCENT PLASMA NS/XX/Frozen COVID-19 | PLASMA Conv NS COVID-19 | 8760 |
| FRESH FROZEN PLASMA | E9750 | Yes | Liquid Apheresis CONVALESCENT PLASMA | Liquid Apheresis CONVALESCENT PLASMA NS/XX/refg COVID-19 | PLASMA Conv AFR Liq NS COVID-19 | 120 |
| FRESH FROZEN PLASMA | E9751 | Yes | Liquid CONVALESCENT PLASMA | Liquid CONVALESCENT PLASMA NS/XX/refg COVID-19 | PLASMA Conv Liq NS COVID-19 | 624 |
| FRESH FROZEN PLASMA | E9752 | Yes | Thawed Apheresis CONVALESCENT PLASMA | Thawed Apheresis CONVALESCENT PLASMA ACD-A/XX/refg COVID-19 | PLASMA Conv AFR Thaw ACD-A COVID-19 | 120 |
| FRESH FROZEN PLASMA | E9753 | Yes | Apheresis CONVALESCENT PLASMA | Apheresis CONVALESCENT PLASMA ACD-A/XX/<=-18C Irradiated COVID-19 | PLASMA AFR Conv ACD-A IRD COVID-19 | 8760 |
| FRESH FROZEN PLASMA | E9754 | Yes | Apheresis CONVALESCENT PLASMA | Apheresis CONVALESCENT PLASMA ACD-A/XX/<=-18C 1st container COVID-19 | PLASMA AFR Conv ACD-A 1C COVID-19 | 8760 |
| FRESH FROZEN PLASMA | E9755 | Yes | Apheresis CONVALESCENT PLASMA | Apheresis CONVALESCENT PLASMA ACD-A/XX/<=-18C 2nd container COVID-19 | PLASMA AFR Conv ACD-A 2C COVID-19 | 8760 |
| FRESH FROZEN PLASMA | E9756 | Yes | Apheresis CONVALESCENT PLASMA | Apheresis CONVALESCENT PLASMA ACD-A/XX/<=-18C 3rd container COVID-19 | PLASMA AFR Conv ACD-A 3C COVID-19 | 8760 |
| FRESH FROZEN PLASMA | E9757 | Yes | Apheresis CONVALESCENT PLASMA | Apheresis CONVALESCENT PLASMA ACD-A/XX/<=-18C 4th container COVID-19 | PLASMA AFR Conv ACD-A 4C COVID-19 | 8760 |
| FRESH FROZEN PLASMA | E9758 | Yes | Liquid Apheresis CONVALESCENT PLASMA | Liquid Apheresis CONVALESCENT PLASMA NS/XX/refg 1st container COVID-19 | PLASMA Conv AFR Liq NS 1C COVID-19 | 120 |

| Component | Product Code | Modifiable | Product Type | Long Name | Short Name | Max Storage Hours |
|---------------------|--------------|------------|--------------------------------------|--|--|-------------------|
| FRESH FROZEN PLASMA | E9759 | Yes | Liquid Apheresis CONVALESCENT PLASMA | Liquid Apheresis CONVALESCENT PLASMA NS/XX/refg 2nd container COVID-19 | PLASMA Conv AFR Liq NS 2C COVID-19 | 120 |
| FRESH FROZEN PLASMA | E9760 | Yes | Liquid Apheresis CONVALESCENT PLASMA | Liquid Apheresis CONVALESCENT PLASMA NS/XX/refg 3rd container COVID-19 | PLASMA Conv AFR Liq NS 3C COVID-19 | 120 |
| FRESH FROZEN PLASMA | E9761 | Yes | Liquid Apheresis CONVALESCENT PLASMA | Liquid Apheresis CONVALESCENT PLASMA NS/XX/refg 4th container COVID-19 | PLASMA Conv AFR Liq NS 4C COVID-19 | 120 |
| FRESH FROZEN PLASMA | E9762 | Yes | Thawed Apheresis CONVALESCENT PLASMA | Thawed Apheresis CONVALESCENT PLASMA ACD-A/XX/refg 1st container COVID-19 | PLASMA Conv AFR Thaw ACD-A 1C COVID-19 | 120 |
| FRESH FROZEN PLASMA | E9763 | Yes | Thawed Apheresis CONVALESCENT PLASMA | Thawed Apheresis CONVALESCENT PLASMA ACD-A/XX/refg 2nd container COVID-19 | PLASMA Conv AFR Thaw ACD-A 2C COVID-19 | 120 |
| FRESH FROZEN PLASMA | E9764 | Yes | Thawed Apheresis CONVALESCENT PLASMA | Thawed Apheresis CONVALESCENT PLASMA ACD-A/XX/refg 3rd container COVID-19 | PLASMA Conv AFR Thaw ACD-A 3C COVID-19 | 120 |
| FRESH FROZEN PLASMA | E9765 | Yes | Thawed Apheresis CONVALESCENT PLASMA | Thawed Apheresis CONVALESCENT PLASMA ACD-A/XX/refg 4th container COVID-19 | PLASMA Conv AFR Thaw ACD-A 4C COVID-19 | 120 |
| FRESH FROZEN PLASMA | E9766 | Yes | Apheresis CONVALESCENT PLASMA | Apheresis CONVALESCENT PLASMA NS/XX/<=18C COVID-19 | PLASMA AFR Conv NS COVID-19 | 8760 |
| FRESH FROZEN PLASMA | E9767 | Yes | Apheresis CONVALESCENT PLASMA | Apheresis CONVALESCENT PLASMA NS/XX/<=18C Methylene blue-treated COVID-19 | PLASMA AFR Conv NS Methyl Blue COVID-19 | 8760 |
| FRESH FROZEN PLASMA | E9768 | Yes | Apheresis CONVALESCENT PLASMA | Apheresis CONVALESCENT PLASMA NS/XX/<=18C Psoralen-treated COVID-19 | PLASMA AFR Conv NS Psoralin COVID-19 | 8760 |
| FRESH FROZEN PLASMA | E9769 | Yes | Apheresis CONVALESCENT PLASMA | Apheresis CONVALESCENT PLASMA NS/XX/<=18C Riboflavin-treated COVID-19 | PLASMA AFR Conv NS Ribo COVID-19 | 8760 |
| FRESH FROZEN PLASMA | E9770 | Yes | Apheresis CONVALESCENT PLASMA | Apheresis CONVALESCENT PLASMA ACD-A/XX/<=18C Methylene blue-treated COVID-19 | PLASMA AFR Conv ACD-A Methyl Blue COVID-19 | 8760 |
| FRESH FROZEN PLASMA | E9771 | Yes | Apheresis CONVALESCENT PLASMA | Apheresis CONVALESCENT PLASMA ACD-A/XX/<=18C Psoralen-treated COVID-19 | PLASMA AFR Conv ACD-A Psoralin COVID-19 | 8760 |
| FRESH FROZEN PLASMA | E9772 | Yes | Apheresis CONVALESCENT PLASMA | Apheresis CONVALESCENT PLASMA ACD-A/XX/<=18C Riboflavin-treated COVID-19 | PLASMA AFR Conv ACD-A Ribo COVID-19 | 8760 |
| FRESH FROZEN PLASMA | E9773 | Yes | Liquid Apheresis CONVALESCENT PLASMA | Liquid Apheresis CONVALESCENT PLASMA ACD-A/XX/refg COVID-19 | PLASMA Conv AFR Liq ACD-A COVID-19 | 120 |
| FRESH FROZEN PLASMA | E9774 | Yes | Liquid Apheresis CONVALESCENT PLASMA | Liquid Apheresis CONVALESCENT PLASMA ACD-A/XX/refg Methylene blue-treated COVID-19 | PLASMA Conv AFR Liq ACD-A Methyl Blue COVID-19 | 120 |
| FRESH FROZEN PLASMA | E9775 | Yes | Liquid Apheresis CONVALESCENT PLASMA | Liquid Apheresis CONVALESCENT PLASMA ACD-A/XX/refg Psoralen-treated COVID-19 | PLASMA Conv AFR Liq ACD-A Psoralin COVID-19 | 120 |
| FRESH FROZEN PLASMA | E9776 | Yes | Liquid Apheresis CONVALESCENT PLASMA | Liquid Apheresis CONVALESCENT PLASMA ACD-A/XX/refg Riboflavin-treated COVID-19 | PLASMA Conv AFR Liq ACD-A Ribo COVID-19 | 120 |
| FRESH FROZEN PLASMA | E9777 | Yes | Liquid Apheresis CONVALESCENT PLASMA | Liquid Apheresis CONVALESCENT PLASMA NS/XX/refg Methylene blue-treated COVID-19 | PLASMA Conv AFR Liq NS Methyl Blue COVID-19 | 120 |
| FRESH FROZEN PLASMA | E9778 | Yes | Liquid Apheresis CONVALESCENT PLASMA | Liquid Apheresis CONVALESCENT PLASMA NS/XX/refg Psoralen-treated COVID-19 | PLASMA Conv AFR Liq NS Psoralin COVID-19 | 120 |
| FRESH FROZEN PLASMA | E9779 | Yes | Liquid Apheresis CONVALESCENT PLASMA | Liquid Apheresis CONVALESCENT PLASMA NS/XX/refg Riboflavin-treated COVID-19 | PLASMA Conv AFR Liq NS Ribo COVID-19 | 120 |
| FRESH FROZEN PLASMA | E9780 | Yes | Thawed CONVALESCENT PLASMA | Thawed CONVALESCENT PLASMA CPD/XX/refg COVID-19 | PLASMA Conv Thaw CPD COVID-19 | 120 |
| FRESH FROZEN PLASMA | E9781 | Yes | Thawed Apheresis CONVALESCENT PLASMA | Thawed Apheresis CONVALESCENT PLASMA CPD/XX/refg COVID-19 | PLASMA Conv AFR Thaw CPD COVID-19 | 120 |

| Component | Product Code | Modifiable | Product Type | Long Name | Short Name | Max Storage Hours |
|---------------------|--------------|------------|--------------------------------------|--|----------------------------------|-------------------|
| FRESH FROZEN PLASMA | E9782 | Yes | Thawed Apheresis CONVALESCENT PLASMA | Thawed Apheresis CONVALESCENT PLASMA NS/XX/refg COVID-19 | PLASMA Conv AFR Thaw NS COVID-19 | 120 |
| FRESH FROZEN PLASMA | E9783 | Yes | Thawed CONVALESCENT PLASMA | Thawed CONVALESCENT PLASMA NS/XX/refg COVID-19 | PLASMA Conv Thaw NS COVID-19 | 120 |

Table 3: Other Blood Products not Related to COVID-19 Treatment

| Component | Product Code | Modifiable | Product Type | Long Name | Short Name | Max Storage Hours |
|---------------------|--------------|------------|----------------------------|--|--|-------------------|
| FRESH FROZEN PLASMA | E9657 | No | Apheresis PLASMA | Apheresis PLASMA 0.5 CPD/XX <=-18C 1st container | PLASMA AFR 0.5 CPD 1C | 8760 |
| PLATELETS | E9658 | No | POOLED PLATELETS | POOLED PLATELETS PAS-E/XX/20-24C ResLeu:<1E6 Riboflavin-treated | PLT Pool PAS-E LUKOPR Ribo | 120 |
| FRESH FROZEN PLASMA | E9659 | Yes | Thawed FRESH FROZEN PLASMA | Thawed FRESH FROZEN PLASMA CPD/XX/refg Open ResLeu:<5E6 | FFP Thaw CPD OPN LUKOPR | 24 |
| PLATELETS | E9660 | Yes | Apheresis PLATELETS | Apheresis PLATELETS ACD-A>PAS-C/XX/20-24C Irradiated ResLeu:<5E6 Bacterial test D4 | PLT AFR ACD-A>PAS-C IRD LUKOPR BacTest D4 | 24 |
| PLATELETS | E9661 | Yes | Apheresis PLATELETS | Apheresis PLATELETS ACD-A>PAS-C/XX/20-24C Irradiated ResLeu:<5E6 1st container Bacterial test D4 | PLT AFR ACD-A>PAS-C IRD LUKOPR 1C BacTest D4 | 24 |
| PLATELETS | E9662 | Yes | Apheresis PLATELETS | Apheresis PLATELETS ACD-A>PAS-C/XX/20-24C Irradiated ResLeu:<5E6 2nd container Bacterial test D4 | PLT AFR ACD-A>PAS-C IRD LUKOPR 2C BacTest D4 | 24 |
| PLATELETS | E9663 | Yes | Apheresis PLATELETS | Apheresis PLATELETS ACD-A>PAS-C/XX/20-24C Irradiated ResLeu:<5E6 3rd container Bacterial test D4 | PLT AFR ACD-A>PAS-C IRD LUKOPR 3C BacTest D4 | 24 |
| PLATELETS | E9664 | Yes | Apheresis PLATELETS | Apheresis PLATELETS ACD-A>PAS-C/XX/20-24C ResLeu:<5E6 <3E11 pLts Bacterial test D4 | PLT AFR ACD-A>PAS-C LUKOPR BacTest D4 | 24 |
| PLATELETS | E9665 | Yes | Apheresis PLATELETS | Apheresis PLATELETS ACD-A>PAS-C/XX/20-24C Irradiated ResLeu:<5E6 <3E11 pLts Bacterial test D4 | PLT AFR ACD-A>PAS-C IRD LUKOPR BacTest D4 | 24 |
| PLATELETS | E9666 | Yes | POOLED PLATELETS | POOLED PLATELETS CP2D/XX/20-24C ResLeu:<5E6 Bacterial test D4 | PLT Pool CP2D LUKOPR BacTest D4 | 24 |
| PLATELETS | E9667 | Yes | POOLED PLATELETS | POOLED PLATELETS CP2D/XX/20-24C Irradiated ResLeu:<5E6 Bacterial test D4 | PLT Pool CP2D IRD LUKOPR BacTest D4 | 24 |
| PLATELETS | E9668 | Yes | POOLED PLATELETS | POOLED PLATELETS CPD/XX/20-24C ResLeu:<5E6 6 units Bacterial test D4 | PLT Pool CPD LUKOPR 6U BacTest D4 | 24 |
| PLATELETS | E9669 | Yes | POOLED PLATELETS | POOLED PLATELETS CPD/XX/20-24C Irradiated ResLeu:<5E6 6 units Bacterial test D4 | PLT Pool CPD IRD LUKOPR 6U BacTest D4 | 24 |
| PLATELETS | E9670 | Yes | Apheresis PLATELETS | Apheresis PLATELETS ACD-A/XX/20-24C ResLeu:<5E6 Bacterial test D4 | PLT AFR ACD-A LUKOPR BacTest D4 | 24 |
| PLATELETS | E9671 | Yes | Apheresis PLATELETS | Apheresis PLATELETS ACD-A/XX/20-24C ResLeu:<5E6 1st container Bacterial test D4 | PLT AFR ACD-A LUKOPR 1C BacTest D4 | 24 |
| PLATELETS | E9672 | Yes | Apheresis PLATELETS | Apheresis PLATELETS ACD-A/XX/20-24C ResLeu:<5E6 2nd container Bacterial test D4 | PLT AFR ACD-A LUKOPR 2C BacTest D4 | 24 |
| PLATELETS | E9673 | Yes | Apheresis PLATELETS | Apheresis PLATELETS ACD-A/XX/20-24C ResLeu:<5E6 3rd container Bacterial test D4 | PLT AFR ACD-A LUKOPR 3C BacTest D4 | 24 |
| PLATELETS | E9674 | Yes | Apheresis PLATELETS | Apheresis PLATELETS ACD-A/XX/20-24C Irradiated ResLeu:<5E6 Bacterial test D4 | PLT AFR ACD-A IRD LUKOPR BacTest D4 | 24 |
| PLATELETS | E9675 | Yes | Apheresis PLATELETS | Apheresis PLATELETS ACD-A/XX/20-24C Irradiated ResLeu:<5E6 1st container Bacterial test D4 | PLT AFR ACD-A IRD LUKOPR 1C BacTest D4 | 24 |
| PLATELETS | E9676 | Yes | Apheresis PLATELETS | Apheresis PLATELETS ACD-A/XX/20-24C Irradiated ResLeu:<5E6 2nd container Bacterial test D4 | PLT AFR ACD-A IRD LUKOPR 2C BacTest D4 | 24 |
| PLATELETS | E9677 | Yes | Apheresis PLATELETS | Apheresis PLATELETS ACD-A/XX/20-24C Irradiated ResLeu:<5E6 3rd container Bacterial test D4 | PLT AFR ACD-A IRD LUKOPR 3C BacTest D4 | 24 |
| PLATELETS | E9678 | Yes | Apheresis PLATELETS | Apheresis PLATELETS ACD-A/XX/20-24C ResLeu:<5E6 <3E11 pLts Bacterial test D4 | PLT AFR ACD-A LUKOPR BacTest D4 | 24 |

| Component | Product Code | Modifiable | Product Type | Long Name | Short Name | Max Storage Hours |
|-----------------|--------------|------------|----------------------------------|--|--|-------------------|
| PLATELETS | E9679 | Yes | Apheresis PLATELETS | Apheresis PLATELETS ACD-A/XX/20-24C Irradiated ResLeu:<5E6 <3E11 plts Bacterial test D4 | PLT AFR ACD-A IRD LUKOPR BacTest D4 | 24 |
| PLATELETS | E9680 | Yes | Apheresis PLATELETS | Apheresis PLATELETS ACD-A>PAS-C/XX/20-24C ResLeu:<5E6 Bacterial test D4 | PLT AFR ACD-A>PAS-C LUKOPR BacTest D4 | 24 |
| PLATELETS | E9681 | Yes | Apheresis PLATELETS | Apheresis PLATELETS ACD-A>PAS-C/XX/20-24C ResLeu:<5E6 1st container Bacterial test D4 | PLT AFR ACD-A>PAS-C LUKOPR 1C BacTest D4 | 24 |
| PLATELETS | E9682 | Yes | Apheresis PLATELETS | Apheresis PLATELETS ACD-A>PAS-C/XX/20-24C ResLeu:<5E6 2nd container Bacterial test D4 | PLT AFR ACD-A>PAS-C LUKOPR 2C BacTest D4 | 24 |
| PLATELETS | E9683 | Yes | Apheresis PLATELETS | Apheresis PLATELETS ACD-A>PAS-C/XX/20-24C ResLeu:<5E6 3rd container Bacterial test D4 | PLT AFR ACD-A>PAS-C LUKOPR 3C BacTest D4 | 24 |
| PLATELETS | E9684 | Yes | Apheresis PLATELETS | Apheresis PLATELETS ACD-A>PAS-C/XX/20-24C ResLeu:<5E6 Plasma reduced | PLT AFR ACD-A>PAS-C LUKOPR PLS Red | 120 |
| PLATELETS | E9685 | Yes | Apheresis PLATELETS | Apheresis PLATELETS ACD-A>PAS-C/XX/20-24C ResLeu:<5E6 Plasma reduced 1st container | PLT AFR ACD-A>PAS-C LUKOPR PLS Red 1C | 120 |
| PLATELETS | E9686 | Yes | Apheresis PLATELETS | Apheresis PLATELETS ACD-A>PAS-C/XX/20-24C ResLeu:<5E6 Plasma reduced 2nd container | PLT AFR ACD-A>PAS-C LUKOPR PLS Red 2C | 120 |
| PLATELETS | E9687 | Yes | Apheresis PLATELETS | Apheresis PLATELETS ACD-A>PAS-C/XX/20-24C ResLeu:<5E6 Plasma reduced 3rd container | PLT AFR ACD-A>PAS-C LUKOPR PLS Red 3C | 120 |
| PLATELETS | E9688 | No | Frozen Apheresis PLATELET LYSATE | Frozen Apheresis PLATELET LYSATE ACD-A/XX/<=65C For mnf:noninjectable | PLT Lysed AFR Froz ACD-A MNFNI | 8760 |
| RED BLOOD CELLS | E9689 | Yes | RED BLOOD CELLS | RED BLOOD CELLS CPD/XX/refg Irradiated Hct 0.5-0.6 | RBC CPD IRD Hct 0.5-0.6 | 504 |
| RED BLOOD CELLS | E9690 | Yes | RED BLOOD CELLS | RED BLOOD CELLS CPD/XX/refg Irradiated Hct 0.70-0.85 | RBC CPD IRD Hct 0.70-0.85 | 504 |
| PLATELETS | E9691 | Yes | Apheresis PLATELETS | Apheresis PLATELETS ACD-A/XX/20-24C Open ResLeu:<5E6 3rd container <3E11 plts Psoralen-treated | PLT AFR ACD-A OPN LUKOPR 3C Psoraln | 4 |
| CRYOPRECIPITATE | E9692 | No | POOLED CRYOPRECIPITATE | POOLED CRYOPRECIPITATE None/XX/<=18C For mnf:injectable | CRYO Pool None MNFI | 8760 |
| PLATELETS | E9693 | Yes | Apheresis PLATELETS | Apheresis PLATELETS ACD-A/XX/20-24C ResLeu:<5E6 4th container Bacterial test D6 | PLT AFR ACD-A LUKOPR 4C BacTest D6 | 24 |
| PLATELETS | E9694 | Yes | Apheresis PLATELETS | Apheresis PLATELETS ACD-A/XX/20-24C ResLeu:<5E6 4th container Bacterial test D7 | PLT AFR ACD-A LUKOPR 4C BacTest D7 | 24 |
| PLATELETS | E9695 | Yes | Apheresis PLATELETS | Apheresis PLATELETS ACD-A/XX/20-24C Irradiated ResLeu:<5E6 4th container Bacterial test D6 | PLT AFR ACD-A IRD LUKOPR 4C BacTest D6 | 24 |
| PLATELETS | E9696 | Yes | Apheresis PLATELETS | Apheresis PLATELETS ACD-A/XX/20-24C Irradiated ResLeu:<5E6 4th container Bacterial test D7 | PLT AFR ACD-A IRD LUKOPR 4C BacTest D7 | 24 |
| PLATELETS | E9697 | Yes | Apheresis PLATELETS | Apheresis PLATELETS ACD-A>PAS-C/XX/20-24C ResLeu:<5E6 Bacterial monitoring | PLT AFR ACD-A>PAS-C LUKOPR BacMtr | 120 |
| PLATELETS | E9698 | Yes | Apheresis PLATELETS | Apheresis PLATELETS ACD-A>PAS-C/XX/20-24C ResLeu:<5E6 1st container Bacterial monitoring | PLT AFR ACD-A>PAS-C LUKOPR 1C BacMtr | 120 |
| PLATELETS | E9699 | Yes | Apheresis PLATELETS | Apheresis PLATELETS ACD-A>PAS-C/XX/20-24C ResLeu:<5E6 2nd container Bacterial monitoring | PLT AFR ACD-A>PAS-C LUKOPR 2C BacMtr | 120 |
| PLATELETS | E9700 | Yes | Apheresis PLATELETS | Apheresis PLATELETS ACD-A>PAS-C/XX/20-24C ResLeu:<5E6 3rd container Bacterial monitoring | PLT AFR ACD-A>PAS-C LUKOPR 3C BacMtr | 120 |
| PLATELETS | E9701 | Yes | Apheresis PLATELETS | Apheresis PLATELETS ACD-A>PAS-C/XX/20-24C ResLeu:<5E6 <3E11 plts Bacterial monitoring | PLT AFR ACD-A>PAS-C LUKOPR BacMtr | 120 |

| Component | Product Code | Modifiable | Product Type | Long Name | Short Name | Max Storage Hours |
|-----------------|--------------|------------|-------------------------------|--|--|-------------------|
| PLATELETS | E9702 | Yes | Apheresis PLATELETS | Apheresis PLATELETS ACD-A>PAS-C/XX/20-24C ResLeu:<5E6 1st container <3E11 plts Bacterial monitoring | PLT AFR ACD-A>PAS-C LUKOPR 1C BacMtr | 120 |
| PLATELETS | E9703 | Yes | Apheresis PLATELETS | Apheresis PLATELETS ACD-A>PAS-C/XX/20-24C ResLeu:<5E6 2nd container <3E11 plts Bacterial monitoring | PLT AFR ACD-A>PAS-C LUKOPR 2C BacMtr | 120 |
| PLATELETS | E9704 | Yes | Apheresis PLATELETS | Apheresis PLATELETS ACD-A>PAS-C/XX/20-24C ResLeu:<5E6 3rd container <3E11 plts Bacterial monitoring | PLT AFR ACD-A>PAS-C LUKOPR 3C BacMtr | 120 |
| PLATELETS | E9705 | Yes | Apheresis PLATELETS | Apheresis PLATELETS ACD-A>PAS-C/XX/20-24C Irradiated ResLeu:<5E6 Bacterial monitoring | PLT AFR ACD-A>PAS-C IRD LUKOPR BacMtr | 120 |
| PLATELETS | E9706 | Yes | Apheresis PLATELETS | Apheresis PLATELETS ACD-A>PAS-C/XX/20-24C Irradiated ResLeu:<5E6 1st container Bacterial monitoring | PLT AFR ACD-A>PAS-C IRD LUKOPR 1C BacMtr | 120 |
| PLATELETS | E9707 | Yes | Apheresis PLATELETS | Apheresis PLATELETS ACD-A>PAS-C/XX/20-24C Irradiated ResLeu:<5E6 2nd container Bacterial monitoring | PLT AFR ACD-A>PAS-C IRD LUKOPR 2C BacMtr | 120 |
| PLATELETS | E9708 | Yes | Apheresis PLATELETS | Apheresis PLATELETS ACD-A>PAS-C/XX/20-24C Irradiated ResLeu:<5E6 3rd container Bacterial monitoring | PLT AFR ACD-A>PAS-C IRD LUKOPR 3C BacMtr | 120 |
| PLATELETS | E9709 | Yes | Apheresis PLATELETS | Apheresis PLATELETS ACD-A>PAS-C/XX/20-24C Irradiated ResLeu:<5E6 <3E11 plts Bacterial monitoring | PLT AFR ACD-A>PAS-C IRD LUKOPR BacMtr | 120 |
| PLATELETS | E9710 | Yes | Apheresis PLATELETS | Apheresis PLATELETS ACD-A>PAS-C/XX/20-24C Irradiated ResLeu:<5E6 1st container <3E11 plts Bacterial monitoring | PLT AFR ACD-A>PAS-C IRD LUKOPR 1C BacMtr | 120 |
| PLATELETS | E9711 | Yes | Apheresis PLATELETS | Apheresis PLATELETS ACD-A>PAS-C/XX/20-24C Irradiated ResLeu:<5E6 2nd container <3E11 plts Bacterial monitoring | PLT AFR ACD-A>PAS-C IRD LUKOPR 2C BacMtr | 120 |
| PLATELETS | E9712 | Yes | Apheresis PLATELETS | Apheresis PLATELETS ACD-A>PAS-C/XX/20-24C Irradiated ResLeu:<5E6 3rd container <3E11 plts Bacterial monitoring | PLT AFR ACD-A>PAS-C IRD LUKOPR 3C BacMtr | 120 |
| PLATELETS | E9713 | No | Apheresis PLATELETS | Apheresis PLATELETS ACD-A/XX/20-24C For mnf:noninjectable ResLeu:<5E6 Psoralen-treated | PLT AFR ACD-A MNFNI LUKOPR Psoraln | 120 |
| PLATELETS | E9714 | No | Apheresis PLATELETS | Apheresis PLATELETS ACD-A/XX/20-24C For mnf:noninjectable ResLeu:<5E6 1st container Psoralen-treated | PLT AFR ACD-A MNFNI LUKOPR 1C Psoraln | 120 |
| PLATELETS | E9715 | No | Apheresis PLATELETS | Apheresis PLATELETS ACD-A/XX/20-24C For mnf:noninjectable ResLeu:<5E6 2nd container Psoralen-treated | PLT AFR ACD-A MNFNI LUKOPR 2C Psoraln | 120 |
| PLATELETS | E9716 | No | Apheresis PLATELETS | Apheresis PLATELETS ACD-A/XX/20-24C For mnf:noninjectable ResLeu:<5E6 3rd container Psoralen-treated | PLT AFR ACD-A MNFNI LUKOPR 3C Psoraln | 120 |
| CRYOPRECIPITATE | E9717 | Yes | Thawed POOLED CRYOPRECIPITATE | Thawed POOLED CRYOPRECIPITATE None/XX/rt Irradiated 10 units | CRYO Pool Thaw None IRD 10U | 6 |

| Component | Product Code | Modifiable | Product Type | Long Name | Short Name | Max Storage Hours |
|---------------------|--------------|------------|-------------------------------|---|------------------------------------|-------------------|
| FRESH FROZEN PLASMA | E9718 | Yes | Apheresis FRESH FROZEN PLASMA | Apheresis FRESH FROZEN PLASMA ACD-A/XX/<=-25C Frozen <=6h Methylene blue-treated | FFP AFR ACD-A Methyl Blue | 8760 |
| PLATELETS | E9719 | Yes | Thawed Apheresis PLATELETS | Thawed Apheresis PLATELETS ACD-A/XX/20-24C ResLeu:<1E6 Psoralen-treated | PLT AFR Thaw ACD-A LUKOPR Psoraln | 4 |
| PLATELETS | E9720 | No | Frozen PLATELET LYSATE | Frozen PLATELET LYSATE CPD/350mL/<=-18C For mnf:injectable | PLT Lysed Froz CPD MNFI | 8760 |
| FRESH FROZEN PLASMA | E9721 | Yes | FRESH FROZEN PLASMA | FRESH FROZEN PLASMA CPD/XX/<=-25C Pathogen reduced: Method NS | FFP CPD PatRed M NS | 8760 |
| CRYOPRECIPITATE | E9722 | Yes | CRYOPRECIPITATE | CRYOPRECIPITATE CPD/XX/<=-25C Pathogen reduced: Method NS | CRYO CPD PatRed M NS | 8760 |
| FRESH FROZEN PLASMA | E9723 | Yes | Apheresis FRESH FROZEN PLASMA | Apheresis FRESH FROZEN PLASMA ACD-A/XX/<=-25C Pathogen reduced: Method NS | FFP AFR ACD-A PatRed M NS | 8760 |
| CRYOPRECIPITATE | E9724 | Yes | Apheresis CRYOPRECIPITATE | Apheresis CRYOPRECIPITATE ACD-A/XX/<=-25C Pathogen reduced: Method NS | CRYO AFR ACD-A PatRed M NS | 8760 |
| CRYOPRECIPITATE | E9725 | Yes | POOLED CRYOPRECIPITATE | POOLED CRYOPRECIPITATE NS/XX/<=-25C Pathogen reduced: Method NS | CRYO Pool NS PatRed M NS | 8760 |
| PLATELETS | E9726 | No | Apheresis PLATELETS | Apheresis PLATELETS ACD-A>PAS-E/XX/20-24C Plasma reduced | PLT AFR ACD-A>PAS-E PLS Red | 120 |
| PLATELETS | E9727 | No | Apheresis PLATELETS | Apheresis PLATELETS ACD-A>PAS-E/XX/20-24C Plasma reduced 1st container | PLT AFR ACD-A>PAS-E PLS Red 1C | 120 |
| PLATELETS | E9728 | No | Apheresis PLATELETS | Apheresis PLATELETS ACD-A>PAS-E/XX/20-24C Plasma reduced 2nd container | PLT AFR ACD-A>PAS-E PLS Red 2C | 120 |
| PLATELETS | E9729 | No | Apheresis PLATELETS | Apheresis PLATELETS ACD-A>PAS-E/XX/20-24C Plasma reduced 3rd container | PLT AFR ACD-A>PAS-E PLS Red 3C | 120 |
| PLATELETS | E9730 | No | Apheresis PLATELETS | Apheresis PLATELETS ACD-A>PAS-E/XX/20-24C Irradiated Plasma reduced | PLT AFR ACD-A>PAS-E IRD PLS Red | 120 |
| PLATELETS | E9731 | No | Apheresis PLATELETS | Apheresis PLATELETS ACD-A>PAS-E/XX/20-24C Irradiated Plasma reduced 1st container | PLT AFR ACD-A>PAS-E IRD PLS Red 1C | 120 |
| PLATELETS | E9732 | No | Apheresis PLATELETS | Apheresis PLATELETS ACD-A>PAS-E/XX/20-24C Irradiated Plasma reduced 2nd container | PLT AFR ACD-A>PAS-E IRD PLS Red 2C | 120 |
| PLATELETS | E9733 | No | Apheresis PLATELETS | Apheresis PLATELETS ACD-A>PAS-E/XX/20-24C Irradiated Plasma reduced 3rd container | PLT AFR ACD-A>PAS-E IRD PLS Red 3C | 120 |
| OTHER | E9734 | Yes | POOLED GRANULOCYTES | POOLED GRANULOCYTES CPD>PAS-E/XX/rt Irradiated | GRAN Pool CPD>PAS-E IRD | 4 |
| FRESH FROZEN PLASMA | E9737 | Yes | Apheresis FRESH FROZEN PLASMA | Apheresis FRESH FROZEN PLASMA NaCitrate/XX/<=-25C Frozen <=15h Methylene blue-treated | FFP AFR NaCit Methyl Blue | 8760 |
| RED BLOOD CELLS | E9742 | Yes | RED BLOOD CELLS | RED BLOOD CELLS CPDA-1/450mL/refg ResLeu:Nationally defined Buffy coat removed | RBC CPDA-1 LUKOPR BuF Rem | 840 |

Table 4: Possible Modifications for Newly Added Products

| Modification | Method | Source Product Code | Source Product Name | Target Product Code | Target Product Name |
|--------------|--------|---------------------|--|---------------------|---|
| Thaw | CLOSED | E9735 | CONVALESCENT PLASMA CPD/XX/<=18C COVID-19 | E9780 | Thawed CONVALESCENT PLASMA CPD/XX/refg COVID-19 |
| Thaw | CLOSED | E9736 | Apheresis CONVALESCENT PLASMA CPD/XX/<=18C COVID-19 | E9781 | Thawed Apheresis CONVALESCENT PLASMA CPD/XX/refg COVID-19 |
| Thaw | CLOSED | E9740 | Apheresis CONVALESCENT PLASMA NaCitrate/XX/<=18C COVID-19 | E9782 | Thawed Apheresis CONVALESCENT PLASMA NS/XX/refg COVID-19 |
| Thaw | CLOSED | E9743 | Apheresis CONVALESCENT PLASMA NS/XX/<=25C COVID-19 | E9782 | Thawed Apheresis CONVALESCENT PLASMA NS/XX/refg COVID-19 |
| Thaw | CLOSED | E9747 | Apheresis CONVALESCENT PLASMA ACD-A/XX/<=18C COVID-19 | E9752 | Thawed Apheresis CONVALESCENT PLASMA ACD-A/XX/refg COVID-19 |
| Thaw | CLOSED | E9748 | Apheresis CONVALESCENT PLASMA NS/XX/Frozen COVID-19 | E9782 | Thawed Apheresis CONVALESCENT PLASMA NS/XX/refg COVID-19 |
| Thaw | CLOSED | E9749 | CONVALESCENT PLASMA NS/XX/Frozen COVID-19 | E9783 | Thawed CONVALESCENT PLASMA NS/XX/refg COVID-19 |
| Thaw | CLOSED | E9754 | Apheresis CONVALESCENT PLASMA ACD-A/XX/<=18C 1st container COVID-19 | E9762 | Thawed Apheresis CONVALESCENT PLASMA ACD-A/XX/refg 1st container COVID-19 |
| Thaw | CLOSED | E9755 | Apheresis CONVALESCENT PLASMA ACD-A/XX/<=18C 2nd container COVID-19 | E9763 | Thawed Apheresis CONVALESCENT PLASMA ACD-A/XX/refg 2nd container COVID-19 |
| Thaw | CLOSED | E9756 | Apheresis CONVALESCENT PLASMA ACD-A/XX/<=18C 3rd container COVID-19 | E9764 | Thawed Apheresis CONVALESCENT PLASMA ACD-A/XX/refg 3rd container COVID-19 |
| Thaw | CLOSED | E9757 | Apheresis CONVALESCENT PLASMA ACD-A/XX/<=18C 4th container COVID-19 | E9765 | Thawed Apheresis CONVALESCENT PLASMA ACD-A/XX/refg 4th container COVID-19 |
| Thaw | CLOSED | E9766 | Apheresis CONVALESCENT PLASMA NS/XX/<=18C COVID-19 | E9782 | Thawed Apheresis CONVALESCENT PLASMA NS/XX/refg COVID-19 |
| Irradiate | CLOSED | E7825 | Thawed POOLED CRYOPRECIPITATE None/XX/rt 10 units | E9717 | Thawed POOLED CRYOPRECIPITATE None/XX/rt Irradiated 10 units |
| Irradiate | CLOSED | E9693 | Apheresis PLATELETS ACD-A/XX/20-24C ResLeu:<5E6 4th container Bacterial test D6 | E9695 | Apheresis PLATELETS ACD-A/XX/20-24C Irradiated ResLeu:<5E6 4th container Bacterial test D6 |
| Irradiate | CLOSED | E9694 | Apheresis PLATELETS ACD-A/XX/20-24C ResLeu:<5E6 4th container Bacterial test D7 | E9696 | Apheresis PLATELETS ACD-A/XX/20-24C Irradiated ResLeu:<5E6 4th container Bacterial test D7 |
| Irradiate | CLOSED | E9697 | Apheresis PLATELETS ACD-A>PAS-C/XX/20-24C ResLeu:<5E6 Bacterial monitoring | E9705 | Apheresis PLATELETS ACD-A>PAS-C/XX/20-24C Irradiated ResLeu:<5E6 Bacterial monitoring |
| Irradiate | CLOSED | E9698 | Apheresis PLATELETS ACD-A>PAS-C/XX/20-24C ResLeu:<5E6 1st container Bacterial monitoring | E9706 | Apheresis PLATELETS ACD-A>PAS-C/XX/20-24C Irradiated ResLeu:<5E6 1st container Bacterial monitoring |
| Irradiate | CLOSED | E9699 | Apheresis PLATELETS ACD-A>PAS-C/XX/20-24C ResLeu:<5E6 2nd container Bacterial monitoring | E9707 | Apheresis PLATELETS ACD-A>PAS-C/XX/20-24C Irradiated ResLeu:<5E6 2nd container Bacterial monitoring |
| Irradiate | CLOSED | E9700 | Apheresis PLATELETS ACD-A>PAS-C/XX/20-24C ResLeu:<5E6 3rd container Bacterial monitoring | E9708 | Apheresis PLATELETS ACD-A>PAS-C/XX/20-24C Irradiated ResLeu:<5E6 3rd container Bacterial monitoring |
| Irradiate | CLOSED | E9701 | Apheresis PLATELETS ACD-A>PAS-C/XX/20-24C ResLeu:<5E6 <3E11 plts Bacterial monitoring | E9705 | Apheresis PLATELETS ACD-A>PAS-C/XX/20-24C Irradiated ResLeu:<5E6 Bacterial monitoring |
| Irradiate | CLOSED | E9701 | Apheresis PLATELETS ACD-A>PAS-C/XX/20-24C ResLeu:<5E6 <3E11 plts Bacterial monitoring | E9709 | Apheresis PLATELETS ACD-A>PAS-C/XX/20-24C Irradiated ResLeu:<5E6 <3E11 plts Bacterial monitoring |

| Modification | Method | Source Product Code | Source Product Name | Target Product Code | Target Product Name |
|--------------|--------|---------------------|---|---------------------|--|
| Irradiate | CLOSED | E9702 | Apheresis PLATELETS ACD-A>PAS-C/XX/20-24C ResLeu:<5E6 1st container <3E11 plts Bacterial monitoring | E9706 | Apheresis PLATELETS ACD-A>PAS-C/XX/20-24C Irradiated ResLeu:<5E6 1st container Bacterial monitoring |
| Irradiate | CLOSED | E9702 | Apheresis PLATELETS ACD-A>PAS-C/XX/20-24C ResLeu:<5E6 1st container <3E11 plts Bacterial monitoring | E9710 | Apheresis PLATELETS ACD-A>PAS-C/XX/20-24C Irradiated ResLeu:<5E6 1st container <3E11 plts Bacterial monitoring |
| Irradiate | CLOSED | E9703 | Apheresis PLATELETS ACD-A>PAS-C/XX/20-24C ResLeu:<5E6 2nd container <3E11 plts Bacterial monitoring | E9707 | Apheresis PLATELETS ACD-A>PAS-C/XX/20-24C Irradiated ResLeu:<5E6 2nd container Bacterial monitoring |
| Irradiate | CLOSED | E9703 | Apheresis PLATELETS ACD-A>PAS-C/XX/20-24C ResLeu:<5E6 2nd container <3E11 plts Bacterial monitoring | E9711 | Apheresis PLATELETS ACD-A>PAS-C/XX/20-24C Irradiated ResLeu:<5E6 2nd container <3E11 plts Bacterial monitoring |
| Irradiate | CLOSED | E9704 | Apheresis PLATELETS ACD-A>PAS-C/XX/20-24C ResLeu:<5E6 3rd container <3E11 plts Bacterial monitoring | E9708 | Apheresis PLATELETS ACD-A>PAS-C/XX/20-24C Irradiated ResLeu:<5E6 3rd container Bacterial monitoring |
| Irradiate | CLOSED | E9704 | Apheresis PLATELETS ACD-A>PAS-C/XX/20-24C ResLeu:<5E6 3rd container <3E11 plts Bacterial monitoring | E9712 | Apheresis PLATELETS ACD-A>PAS-C/XX/20-24C Irradiated ResLeu:<5E6 3rd container <3E11 plts Bacterial monitoring |
| Irradiate | CLOSED | E9719 | Thawed Apheresis PLATELETS ACD-A/XX/20-24C ResLeu:<1E6 Psoralen-treated | E9108 | Thawed Apheresis PLATELETS ACD-A/XX/20-24C Irradiated ResLeu:<1E6 Psoralen-treated |
| Split/Divide | CLOSED | E9693 | Apheresis PLATELETS ACD-A/XX/20-24C ResLeu:<5E6 4th container Bacterial test D6 | E9693 | Apheresis PLATELETS ACD-A/XX/20-24C ResLeu:<5E6 4th container Bacterial test D6 |
| Split/Divide | CLOSED | E9694 | Apheresis PLATELETS ACD-A/XX/20-24C ResLeu:<5E6 4th container Bacterial test D7 | E9694 | Apheresis PLATELETS ACD-A/XX/20-24C ResLeu:<5E6 4th container Bacterial test D7 |
| Split/Divide | CLOSED | E9695 | Apheresis PLATELETS ACD-A/XX/20-24C Irradiated ResLeu:<5E6 4th container Bacterial test D6 | E9695 | Apheresis PLATELETS ACD-A/XX/20-24C Irradiated ResLeu:<5E6 4th container Bacterial test D6 |
| Split/Divide | CLOSED | E9696 | Apheresis PLATELETS ACD-A/XX/20-24C Irradiated ResLeu:<5E6 4th container Bacterial test D7 | E9696 | Apheresis PLATELETS ACD-A/XX/20-24C Irradiated ResLeu:<5E6 4th container Bacterial test D7 |
| Split/Divide | CLOSED | E9697 | Apheresis PLATELETS ACD-A>PAS-C/XX/20-24C ResLeu:<5E6 Bacterial monitoring | E9697 | Apheresis PLATELETS ACD-A>PAS-C/XX/20-24C ResLeu:<5E6 Bacterial monitoring |
| Split/Divide | CLOSED | E9698 | Apheresis PLATELETS ACD-A>PAS-C/XX/20-24C ResLeu:<5E6 1st container Bacterial monitoring | E9698 | Apheresis PLATELETS ACD-A>PAS-C/XX/20-24C ResLeu:<5E6 1st container Bacterial monitoring |
| Split/Divide | CLOSED | E9699 | Apheresis PLATELETS ACD-A>PAS-C/XX/20-24C ResLeu:<5E6 2nd container Bacterial monitoring | E9699 | Apheresis PLATELETS ACD-A>PAS-C/XX/20-24C ResLeu:<5E6 2nd container Bacterial monitoring |
| Split/Divide | CLOSED | E9700 | Apheresis PLATELETS ACD-A>PAS-C/XX/20-24C ResLeu:<5E6 3rd container Bacterial monitoring | E9700 | Apheresis PLATELETS ACD-A>PAS-C/XX/20-24C ResLeu:<5E6 3rd container Bacterial monitoring |
| Split/Divide | CLOSED | E9701 | Apheresis PLATELETS ACD-A>PAS-C/XX/20-24C ResLeu:<5E6 <3E11 plts Bacterial monitoring | E9701 | Apheresis PLATELETS ACD-A>PAS-C/XX/20-24C ResLeu:<5E6 <3E11 plts Bacterial monitoring |
| Split/Divide | CLOSED | E9702 | Apheresis PLATELETS ACD-A>PAS-C/XX/20-24C ResLeu:<5E6 1st container <3E11 plts Bacterial monitoring | E9702 | Apheresis PLATELETS ACD-A>PAS-C/XX/20-24C ResLeu:<5E6 1st container <3E11 plts Bacterial monitoring |
| Split/Divide | CLOSED | E9703 | Apheresis PLATELETS ACD-A>PAS-C/XX/20-24C ResLeu:<5E6 2nd container <3E11 plts Bacterial monitoring | E9703 | Apheresis PLATELETS ACD-A>PAS-C/XX/20-24C ResLeu:<5E6 2nd container <3E11 plts Bacterial monitoring |

| Modification | Method | Source Product Code | Source Product Name | Target Product Code | Target Product Name |
|--------------|--------|---------------------|--|---------------------|--|
| Split/Divide | CLOSED | E9704 | Apheresis PLATELETS ACD-A>PAS-C/XX/20-24C ResLeu:<5E6 3rd container <3E11 plts Bacterial monitoring | E9704 | Apheresis PLATELETS ACD-A>PAS-C/XX/20-24C ResLeu:<5E6 3rd container <3E11 plts Bacterial monitoring |
| Split/Divide | CLOSED | E9705 | Apheresis PLATELETS ACD-A>PAS-C/XX/20-24C Irradiated ResLeu:<5E6 Bacterial monitoring | E9705 | Apheresis PLATELETS ACD-A>PAS-C/XX/20-24C Irradiated ResLeu:<5E6 Bacterial monitoring |
| Split/Divide | CLOSED | E9706 | Apheresis PLATELETS ACD-A>PAS-C/XX/20-24C Irradiated ResLeu:<5E6 1st container Bacterial monitoring | E9706 | Apheresis PLATELETS ACD-A>PAS-C/XX/20-24C Irradiated ResLeu:<5E6 1st container Bacterial monitoring |
| Split/Divide | CLOSED | E9707 | Apheresis PLATELETS ACD-A>PAS-C/XX/20-24C Irradiated ResLeu:<5E6 2nd container Bacterial monitoring | E9707 | Apheresis PLATELETS ACD-A>PAS-C/XX/20-24C Irradiated ResLeu:<5E6 2nd container Bacterial monitoring |
| Split/Divide | CLOSED | E9708 | Apheresis PLATELETS ACD-A>PAS-C/XX/20-24C Irradiated ResLeu:<5E6 3rd container Bacterial monitoring | E9708 | Apheresis PLATELETS ACD-A>PAS-C/XX/20-24C Irradiated ResLeu:<5E6 3rd container Bacterial monitoring |
| Split/Divide | CLOSED | E9709 | Apheresis PLATELETS ACD-A>PAS-C/XX/20-24C Irradiated ResLeu:<5E6 <3E11 plts Bacterial monitoring | E9709 | Apheresis PLATELETS ACD-A>PAS-C/XX/20-24C Irradiated ResLeu:<5E6 <3E11 plts Bacterial monitoring |
| Split/Divide | CLOSED | E9710 | Apheresis PLATELETS ACD-A>PAS-C/XX/20-24C Irradiated ResLeu:<5E6 1st container <3E11 plts Bacterial monitoring | E9710 | Apheresis PLATELETS ACD-A>PAS-C/XX/20-24C Irradiated ResLeu:<5E6 1st container <3E11 plts Bacterial monitoring |
| Split/Divide | CLOSED | E9711 | Apheresis PLATELETS ACD-A>PAS-C/XX/20-24C Irradiated ResLeu:<5E6 2nd container <3E11 plts Bacterial monitoring | E9711 | Apheresis PLATELETS ACD-A>PAS-C/XX/20-24C Irradiated ResLeu:<5E6 2nd container <3E11 plts Bacterial monitoring |
| Split/Divide | CLOSED | E9712 | Apheresis PLATELETS ACD-A>PAS-C/XX/20-24C Irradiated ResLeu:<5E6 3rd container <3E11 plts Bacterial monitoring | E9712 | Apheresis PLATELETS ACD-A>PAS-C/XX/20-24C Irradiated ResLeu:<5E6 3rd container <3E11 plts Bacterial monitoring |
| Split/Divide | CLOSED | E9717 | Thawed POOLED CRYOPRECIPITATE None/XX/rt Irradiated 10 units | E9717 | Thawed POOLED CRYOPRECIPITATE None/XX/rt Irradiated 10 units |
| Split/Divide | CLOSED | E9719 | Thawed Apheresis PLATELETS ACD-A/XX/20-24C ResLeu:<1E6 Psoralen-treated | E9719 | Thawed Apheresis PLATELETS ACD-A/XX/20-24C ResLeu:<1E6 Psoralen-treated |
| Split/Divide | CLOSED | E9734 | POOLED GRANULOCYTES CPD>PAS-E/XX/rt Irradiated | E9734 | POOLED GRANULOCYTES CPD>PAS-E/XX/rt Irradiated |
| Split/Divide | CLOSED | E9738 | Liquid CONVALESCENT PLASMA CPD/XX/refg COVID-19 | E9738 | Liquid CONVALESCENT PLASMA CPD/XX/refg COVID-19 |
| Split/Divide | CLOSED | E9739 | Liquid Apheresis CONVALESCENT PLASMA CPD/XX/refg COVID-19 | E9739 | Liquid Apheresis CONVALESCENT PLASMA CPD/XX/refg COVID-19 |
| Split/Divide | CLOSED | E9742 | RED BLOOD CELLS CPDA-1/450mL/refg ResLeu:Nationally defined Buffy coat removed | E9742 | RED BLOOD CELLS CPDA-1/450mL/refg ResLeu:Nationally defined Buffy coat removed |
| Split/Divide | CLOSED | E9750 | Liquid Apheresis CONVALESCENT PLASMA NS/XX/refg COVID-19 | E9750 | Liquid Apheresis CONVALESCENT PLASMA NS/XX/refg COVID-19 |
| Split/Divide | CLOSED | E9751 | Liquid CONVALESCENT PLASMA NS/XX/refg COVID-19 | E9751 | Liquid CONVALESCENT PLASMA NS/XX/refg COVID-19 |
| Split/Divide | CLOSED | E9752 | Thawed Apheresis CONVALESCENT PLASMA ACD-A/XX/refg COVID-19 | E9752 | Thawed Apheresis CONVALESCENT PLASMA ACD-A/XX/refg COVID-19 |
| Split/Divide | CLOSED | E9758 | Liquid Apheresis CONVALESCENT PLASMA NS/XX/refg 1st container COVID-19 | E9758 | Liquid Apheresis CONVALESCENT PLASMA NS/XX/refg 1st container COVID-19 |

| Modification | Method | Source Product Code | Source Product Name | Target Product Code | Target Product Name |
|--------------|--------|---------------------|--|---------------------|--|
| Split/Divide | CLOSED | E9759 | Liquid Apheresis CONVALESCENT PLASMA NS/XX/refg 2nd container COVID-19 | E9759 | Liquid Apheresis CONVALESCENT PLASMA NS/XX/refg 2nd container COVID-19 |
| Split/Divide | CLOSED | E9760 | Liquid Apheresis CONVALESCENT PLASMA NS/XX/refg 3rd container COVID-19 | E9760 | Liquid Apheresis CONVALESCENT PLASMA NS/XX/refg 3rd container COVID-19 |
| Split/Divide | CLOSED | E9761 | Liquid Apheresis CONVALESCENT PLASMA NS/XX/refg 4th container COVID-19 | E9761 | Liquid Apheresis CONVALESCENT PLASMA NS/XX/refg 4th container COVID-19 |
| Split/Divide | CLOSED | E9762 | Thawed Apheresis CONVALESCENT PLASMA ACD-A/XX/refg 1st container COVID-19 | E9762 | Thawed Apheresis CONVALESCENT PLASMA ACD-A/XX/refg 1st container COVID-19 |
| Split/Divide | CLOSED | E9763 | Thawed Apheresis CONVALESCENT PLASMA ACD-A/XX/refg 2nd container COVID-19 | E9763 | Thawed Apheresis CONVALESCENT PLASMA ACD-A/XX/refg 2nd container COVID-19 |
| Split/Divide | CLOSED | E9764 | Thawed Apheresis CONVALESCENT PLASMA ACD-A/XX/refg 3rd container COVID-19 | E9764 | Thawed Apheresis CONVALESCENT PLASMA ACD-A/XX/refg 3rd container COVID-19 |
| Split/Divide | CLOSED | E9765 | Thawed Apheresis CONVALESCENT PLASMA ACD-A/XX/refg 4th container COVID-19 | E9765 | Thawed Apheresis CONVALESCENT PLASMA ACD-A/XX/refg 4th container COVID-19 |
| Split/Divide | CLOSED | E9773 | Liquid Apheresis CONVALESCENT PLASMA ACD-A/XX/refg COVID-19 | E9773 | Liquid Apheresis CONVALESCENT PLASMA ACD-A/XX/refg COVID-19 |
| Split/Divide | CLOSED | E9774 | Liquid Apheresis CONVALESCENT PLASMA ACD-A/XX/refg Methylene blue-treated COVID-19 | E9774 | Liquid Apheresis CONVALESCENT PLASMA ACD-A/XX/refg Methylene blue-treated COVID-19 |
| Split/Divide | CLOSED | E9775 | Liquid Apheresis CONVALESCENT PLASMA ACD-A/XX/refg Psoralen-treated COVID-19 | E9775 | Liquid Apheresis CONVALESCENT PLASMA ACD-A/XX/refg Psoralen-treated COVID-19 |
| Split/Divide | CLOSED | E9776 | Liquid Apheresis CONVALESCENT PLASMA ACD-A/XX/refg Riboflavin-treated COVID-19 | E9776 | Liquid Apheresis CONVALESCENT PLASMA ACD-A/XX/refg Riboflavin-treated COVID-19 |
| Split/Divide | CLOSED | E9777 | Liquid Apheresis CONVALESCENT PLASMA NS/XX/refg Methylene blue-treated COVID-19 | E9777 | Liquid Apheresis CONVALESCENT PLASMA NS/XX/refg Methylene blue-treated COVID-19 |
| Split/Divide | CLOSED | E9778 | Liquid Apheresis CONVALESCENT PLASMA NS/XX/refg Psoralen-treated COVID-19 | E9778 | Liquid Apheresis CONVALESCENT PLASMA NS/XX/refg Psoralen-treated COVID-19 |
| Split/Divide | CLOSED | E9779 | Liquid Apheresis CONVALESCENT PLASMA NS/XX/refg Riboflavin-treated COVID-19 | E9779 | Liquid Apheresis CONVALESCENT PLASMA NS/XX/refg Riboflavin-treated COVID-19 |
| Split/Divide | CLOSED | E9780 | Thawed CONVALESCENT PLASMA CPD/XX/refg COVID-19 | E9780 | Thawed CONVALESCENT PLASMA CPD/XX/refg COVID-19 |
| Split/Divide | CLOSED | E9781 | Thawed Apheresis CONVALESCENT PLASMA CPD/XX/refg COVID-19 | E9781 | Thawed Apheresis CONVALESCENT PLASMA CPD/XX/refg COVID-19 |
| Split/Divide | CLOSED | E9782 | Thawed Apheresis CONVALESCENT PLASMA NS/XX/refg COVID-19 | E9782 | Thawed Apheresis CONVALESCENT PLASMA NS/XX/refg COVID-19 |
| Split/Divide | CLOSED | E9783 | Thawed CONVALESCENT PLASMA NS/XX/refg COVID-19 | E9783 | Thawed CONVALESCENT PLASMA NS/XX/refg COVID-19 |

This is the last page of *VistA Blood Establishment Computer Software (VBECS) 2.3.2 Rev C Release Notes*.