



# VistA Blood Establishment Computer Software (VBECS) 2.3.2 Rev E

## Release Notes Version 1.0

Department of Veterans Affairs  
Enterprise Project Management Office

This page intentionally left blank.

# Revision History

Date	Revision	Description	Author
05/11/20	1.0	VBECS 2.3.2 Rev E Initial version	BBM Team

This page intentionally left blank.

# Table of Contents

<b>REVISION HISTORY .....</b>	<b>I</b>
<b>INTRODUCTION.....</b>	<b>1</b>
<b>CHANGED FEATURES AND FUNCTIONS.....</b>	<b>1</b>
UNTESTABLE SYSTEM-LEVEL CORRECTED CODE REQUESTS.....	1
VISTA SOFTWARE DEPENDENCIES .....	1
VBECS USER DOCUMENTS.....	2
<b>CUSTOMER SUPPORT .....</b>	<b>4</b>
PROBLEMS?.....	4
REFERENCES .....	4
VBECS SHAREPOINT SITE .....	4
<b>INSTALLATION QUALIFICATION (IQ) DOCUMENTATION.....</b>	<b>5</b>
<b>VALIDATION PLANNING .....</b>	<b>6</b>
<b>TABLE 1: UPDATES BY OPTION.....</b>	<b>7</b>
<b>TABLE 2: NEW BLOOD PRODUCTS FOR COVID-19 TREATMENT .....</b>	<b>8</b>
<b>TABLE 3: OTHER BLOOD PRODUCTS NOT RELATED TO COVID-19 TREATMENT .....</b>	<b>10</b>
<b>TABLE 4: POSSIBLE MODIFICATIONS USING NEWLY ADDED PRODUCTS.....</b>	<b>11</b>

This page intentionally left blank.

## Introduction

*VistA Blood Establishment Computer Software (VBECS) 2.3.2 Rev E Release Notes* contains information for changes and corrections made to VBECS in the 2.3.2 Rev E patch.

Perform a local evaluation and risk assessment of the changes to determine the requirements for local validation of the changes, including documentation of the assessment activities. See *Validation Planning*.

## Changed Features and Functions

This revision letter patch release is centrally focused around providing additional blood product updates released from International Council for Commonality in Blood Banking Automation, Inc. (ICCBBA) for the treatment of COVID-19. All blood products contained in ICCBBA releases 7.35.5, 7.36.0, and 7.36.1 are included.

Table 1: Updates by Option provides complete lists of included changes.

For a full list of new product codes see tables 2, 3 and 4.

### ***Untestable System-Level Corrected Code Requests***

- None

### ***VistA Software Dependencies***

- No VistA patch is required for this blood product-only release.

## **VBECS User Documents**

The following is a list of all the VBECS user documents that apply to the VBECS 2.3.2 Rev E patch release. The **Updated** column identifies the documents that have been updated with this VBECS 2.3.2 Rev E revision letter patch release.

These user documents are available from the VA Software Document Library (VDL) at <https://www.va.gov/vdl/application.asp?appid=182>.

<b>User Document</b>	<b>Version</b>	<b>Updated</b>
<i>VistA Blood Establishment Computer Software (VBECS) 2.3.2 User Guide</i>	4.0	No
<i>VistA Blood Establishment Computer Software (VBECS) 2.3.2 Administrator User Guide</i>	3.0	No
<i>VistA Blood Establishment Computer Software (VBECS) 2.3.2 Known Defects and Anomalies</i>	3.0	No
<i>VistA Blood Establishment Computer Software (VBECS) 2.3.2 Technical Manual-Security Guide</i>	1.0	No
<i>VistA Blood Establishment Computer Software (VBECS) - Echo Interface Configuration and Setup Guide</i>	5.0	No
<i>VistA Blood Establishment Computer Software (VBECS) - Erytra Interface Configuration and Setup Guide</i>	2.0	No
<i>VistA Blood Establishment Computer Software (VBECS) - ProVue Interface Configuration and Setup Guide</i>	5.0	No
<i>VistA Blood Establishment Computer Software (VBECS) - Vision Interface Configuration and Setup Guide</i>	4.0	No



The following is a list of all the VBECS FAQ documents that apply to the VBECS 2.3.2 Rev E patch release. The **Updated** column identifies the documents that have been updated with this VBECS 2.3.2 Rev E revision letter patch release.

These FAQ documents are available from the VA SharePoint site at [REDACTED/](#).

<b>FAQ Document</b>	<b>Version</b>	<b>Updated</b>
<i>FAQ ABO subgroup Interpretations</i>	11/22/16	No
<i>FAQ Ancillary VistA Validation</i>	11/28/17	No
<i>FAQ Antibodies with No Antigen Negative Requirement</i>	10/15/14	No
<i>FAQ Blood Product Table Processes</i>	03/28/19	No
<i>FAQ CAP Comprehensive Transfusions Medicine Crossmatch Survey</i>	11/22/16	No
<i>FAQ Compound Antibodies</i>	02/27/13	No
<i>FAQ CPRS VBECS Order Details</i>	04/01/09	No
<i>FAQ Database Conversion Oddballs</i>	09/15/09	No
<i>FAQ Documenting Unhandled Exceptions</i>	05/21/07	No
<i>FAQ Handling ABO Incompatible Transfusion Situations</i>	09/23/14	No
<i>FAQ How to File a New Service Request for Changes to VBECS</i>	12/08/16	No
<i>FAQ How to take faster screen shots from Remote Desktop Session</i>	12/17/14	No
<i>FAQ Identifying a Comparable Blood Product Code</i>	03/28/19	No
<i>FAQ Local Facilities</i>	12/27/19	No
<i>FAQ Modification Target Not Available</i>	11/28/17	No
<i>FAQ Multidivisional QC Rack Workaround</i>	11/28/17	No
<i>FAQ Order Status Clarification</i>	11/15/17	No
<i>FAQ Polyspecific AHG Not Used for Testing</i>	01/29/10	No
<i>FAQ Proper Use of PIV Card with VBECS</i>	11/04/19	No
<i>FAQ QC Setup</i>	01/29/10	No
<i>FAQ Retesting QC</i>	11/01/11	No
<i>FAQ Retrieving an Expired Order</i>	12/07/17	No
<i>FAQ The Difference Between Transfusion Only and Full Service Facility Types</i>	02/08/10	No
<i>FAQ VBECS Blood Product Hierarchy</i>	03/28/19	No
<i>FAQ VBECS Computer Crossmatch Decision Tree</i>	02/08/12	No
<i>FAQ Weak D Policy</i>	01/11/10	No

# Customer Support

## Problems?

Contact your Local Office of Information Technology (OIT) or Laboratory Information Manager (LIM) if you encounter VistA or CPRS connection problems and for training support **before** contacting the Service Desk (SD).

- Please ensure local contact information is available at all times. SD support will engage Enterprise Operations (EO) personnel as needed.
- Problems with connectivity to VistA and CPRS may require personnel from EO with VBECS server administrator access and VistA IT support access.
- If you experience a Food and Drug Administration (FDA) reportable adverse event (patient death or serious injury) that VBECS may have caused or contributed to, contact the Service Desk directly to enter a ticket for Blood Bank software support.

If the problem remains unresolved after local VistA triage, call the Service Desk (below) and specify the Enterprise Application be set as VistA Blood Establishment Computer Software. This will cause the Assignment group to default to NTL Alert Blood Bank & VBECS, which alerts the Clin2 team.

### Service Desk Contact

For Information Technology (IT) support, call the Service Desk 855-NSD-HELP (855-673-4357) toll free, 24 hours per day, 7 days per week.

### References

- *ISBT128 Standard Technical Specification v 5.10.0*
- *Blood Product Revisions ICCBBA Version 7.36.1, May 6<sup>th</sup> 2020*

### VBECS SharePoint Site

The VBECS SharePoint site provides a location for additional information related to the VBECS application such as FAQs, installation status, and release history.

**REDACTED.**

# Installation Qualification (IQ) Documentation

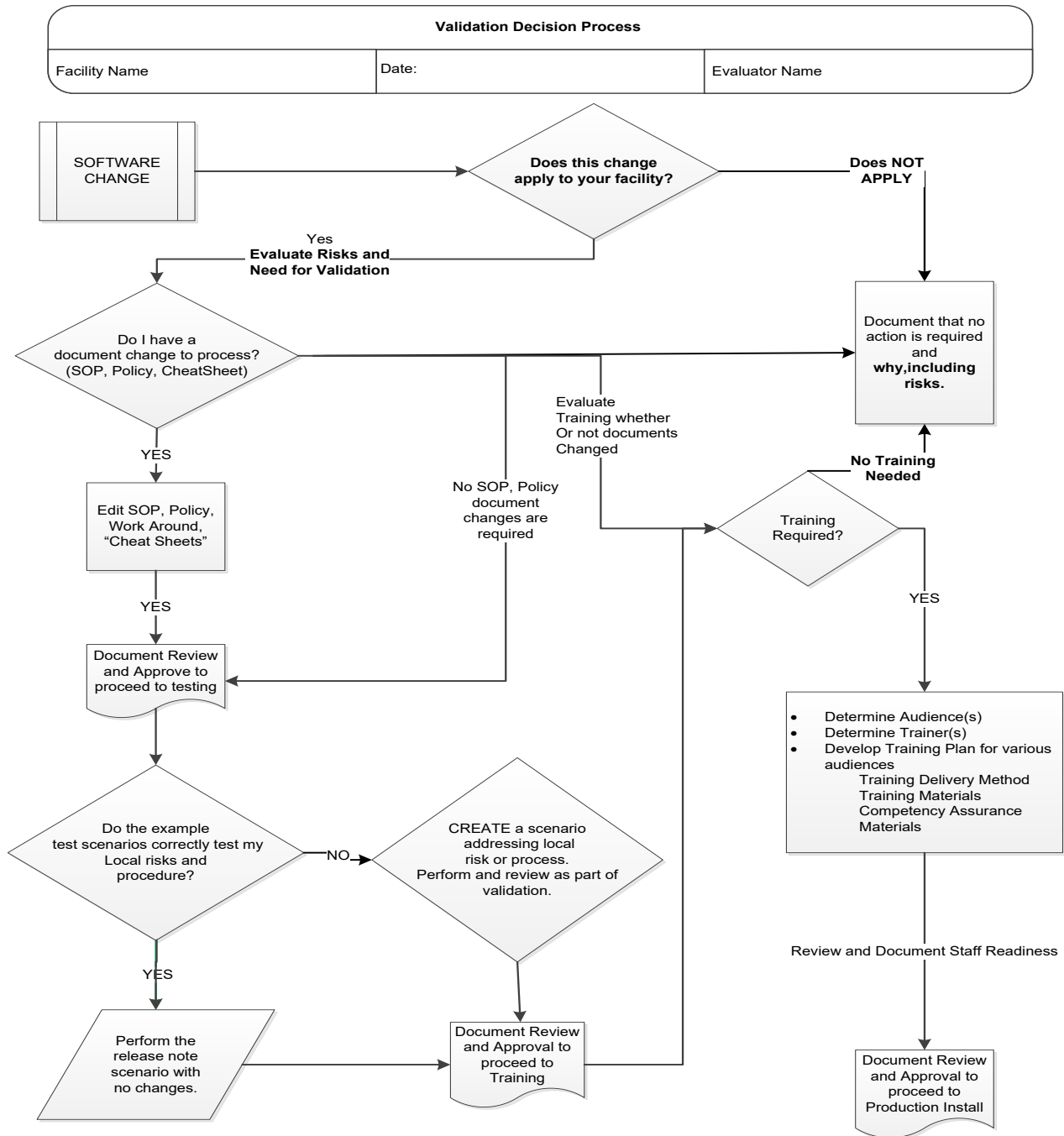
The expedited patch installation process will continue with the installation of VBECS 2.3.2 Rev E.

<b>Test Account Upgrade to VBECS 2.3.2 Revision E</b>	
Required Patch Installation	VistA Patch: N/A Server Patch: VBECS 2.3.2 Revision E
Installation Process for VBECS 2.3.2 Rev E	Installed by the BBM team, all sites will be installed in one day. The date of installation will be communicated through a ListServ announcement.
Expected Downtime	None
Installation Communication for VBECS 2.3.2 Rev E	The planned completion time for all test installs will be provided on the VBECS SharePoint site.
Site Responsibility	<ul style="list-style-type: none"> <li>Join VBECS-L message board on ListServ, if needed.</li> <li>Please communicate any changes to your site supervisor and Point of Contact (POC) since the last patch install to the BBM team to the email group “VA OIT BBM Team”.</li> </ul>
Site Record of Patch Installation	Sites should take and save a screenshot of the VBECS Help, About window after the Test installation is performed. This displays the VBECS updated version information.

<b>Production Account Upgrade to VBECS 2.3.2 Revision E</b>	
Required Patch Installation	VistA Patch: N/A Server Patch: VBECS 2.3.2 Revision E
Installation Process for VBECS 2.3.2 Rev E	Installed by the BBM team, all sites will be installed in one day. The date of installation will be communicated through a ListServ announcement.
Expected Downtime	You will be able to use VBECS during the patch installation. VBECS installation on your production account only lasts a few minutes and is invisible to users.  If you encounter any disruption or errors while viewing or printing reports during the installation, try again after a few minutes.
Installation Communication for VBECS 2.3.2 Rev E	The status of production installs will be provided on the VBECS SharePoint site.
Site Responsibility	<ul style="list-style-type: none"> <li>Perform local validation, training, and set-up requirements prior to Production installation.</li> <li>Join VBECS-L message board on ListServ, if needed.</li> <li>Please communicate any changes to your site supervisor and Point of Contact (POC) since the last patch install to the BBM team to the email group “VA OIT BBM Team”.</li> </ul>
Site Record of Patch Installation	Sites should take and save a screenshot of the VBECS Help, About window after Production installation is performed. This displays the VBECS updated version information.

# Validation Planning

The following is a flowchart to help assess changes for validation planning.



**Table 1: Updates by Option**

ID	Option	Problem Summary	Change Summary	Validation Scenario	Change applies to my facility. (Y/N)	Local risk Assessment (Low, Med, High)	SOP revision required. If yes, identify it.	Staff training needed. (Y/N)	Scenarios or validation must be performed. (Y/N)
1	Blood Products	Update blood product table with new ICCBBA blood product codes from version 7.35.5, 7.36.0, and 7.36.1 with a primary focus on the convalescent plasma products used for treatment of COVID-19.	<p>New blood products were added to VBECS.</p> <p>For a full list of new product codes for COVID-19 treatment, see <b>Table 2</b>.</p> <p>For all other blood products added by ICCBBA that are not related to COVID-19 treatment see <b>Table 3</b>.</p> <p>For possible modifications using the new blood products see <b>Table 4</b>.</p>	Validate only blood products that you may receive from your supplier. Use Tools, Blood Products to associate the blood products with an active facility.					

**Table 2: New Blood Products for COVID-19 Treatment**

Component	Product Code	Modifiable	Product Type	Long Name	Short Name	Maximum Storage Hours
FRESH FROZEN PLASMA	E9812	Yes	Apheresis CONVALESCENT PLASMA	Apheresis CONVALESCENT PLASMA ACD-A/XX/<=-25C Methylene blue-treated COVID-19	PLASMA AFR Conv ACD-A Methyl Blue COVID-19	8760
FRESH FROZEN PLASMA	E9813	Yes	Thawed Apheresis CONVALESCENT PLASMA	Thawed Apheresis CONVALESCENT PLASMA ACD-A/XX/refg Methylene blue-treated COVID-19	PLASMA Conv AFR Thaw ACD-A Methyl Blue COVID-19	120
FRESH FROZEN PLASMA	E9814	Yes	Thawed CONVALESCENT PLASMA	Thawed CONVALESCENT PLASMA CPD/XX/refg Irradiated COVID-19	PLASMA Conv Thaw CPD IRD COVID-19	120
FRESH FROZEN PLASMA	E9815	Yes	Apheresis CONVALESCENT PLASMA	Apheresis CONVALESCENT PLASMA ACD-A/XX/<=-18C Irradiated 1st container COVID-19	PLASMA AFR Conv ACD-A IRD 1C COVID-19	8760
FRESH FROZEN PLASMA	E9816	Yes	Apheresis CONVALESCENT PLASMA	Apheresis CONVALESCENT PLASMA ACD-A/XX/<=-18C Irradiated 2nd container COVID-19	PLASMA AFR Conv ACD-A IRD 2C COVID-19	8760
FRESH FROZEN PLASMA	E9817	Yes	Apheresis CONVALESCENT PLASMA	Apheresis CONVALESCENT PLASMA ACD-A/XX/<=-18C Irradiated 3rd container COVID-19	PLASMA AFR Conv ACD-A IRD 3C COVID-19	8760
FRESH FROZEN PLASMA	E9818	Yes	Apheresis CONVALESCENT PLASMA	Apheresis CONVALESCENT PLASMA ACD-A/XX/<=-18C Irradiated 4th container COVID-19	PLASMA AFR Conv ACD-A IRD 4C COVID-19	8760
FRESH FROZEN PLASMA	E9819	Yes	Thawed Apheresis CONVALESCENT PLASMA	Thawed Apheresis CONVALESCENT PLASMA ACD-A/XX/refg Irradiated 1st container COVID-19	PLASMA Conv AFR Thaw ACD-A IRD 1C COVID-19	120
FRESH FROZEN PLASMA	E9820	Yes	Thawed Apheresis CONVALESCENT PLASMA	Thawed Apheresis CONVALESCENT PLASMA ACD-A/XX/refg Irradiated 2nd container COVID-19	PLASMA Conv AFR Thaw ACD-A IRD 2C COVID-19	120
FRESH FROZEN PLASMA	E9821	Yes	Thawed Apheresis CONVALESCENT PLASMA	Thawed Apheresis CONVALESCENT PLASMA ACD-A/XX/refg Irradiated 3rd container COVID-19	PLASMA Conv AFR Thaw ACD-A IRD 3C COVID-19	120
FRESH FROZEN PLASMA	E9822	Yes	Thawed Apheresis CONVALESCENT PLASMA	Thawed Apheresis CONVALESCENT PLASMA ACD-A/XX/refg Irradiated 4th container COVID-19	PLASMA Conv AFR Thaw ACD-A IRD 4C COVID-19	120
FRESH FROZEN PLASMA	E9823	Yes	Apheresis CONVALESCENT PLASMA	Apheresis CONVALESCENT PLASMA ACD-A/XX/<=-18C 5th container COVID-19	PLASMA AFR Conv ACD-A 5C COVID-19	8760
FRESH FROZEN PLASMA	E9824	Yes	Thawed Apheresis CONVALESCENT PLASMA	Thawed Apheresis CONVALESCENT PLASMA ACD-A/XX/refg 5th container COVID-19	PLASMA Conv AFR Thaw ACD-A 5C COVID-19	120
FRESH FROZEN PLASMA	E9825	Yes	CONVALESCENT PLASMA	CONVALESCENT PLASMA CPD/450mL/<=-25C Methylene blue-treated COVID-19	PLASMA Conv CPD Methyl Blue COVID-19	8760
FRESH FROZEN PLASMA	E9826	Yes	Apheresis CONVALESCENT PLASMA	Apheresis CONVALESCENT PLASMA NaCitrate/XX/<=-18C Riboflavin-treated COVID-19	PLASMA AFR Conv NaCit Ribo COVID-19	8760
FRESH FROZEN PLASMA	E9827	Yes	Apheresis CONVALESCENT PLASMA	Apheresis CONVALESCENT PLASMA NaCitrate/XX/<=-18C Psoralen-treated COVID-19	PLASMA AFR Conv NaCit Psoraln COVID-19	8760
FRESH FROZEN PLASMA	E9841	No	IMMUNE PLASMA	IMMUNE PLASMA CPD/XX/<=-25C For mnf.injectable SARS-CoV-2	PLASMA Imm CPD MNFI SARS-CoV-2	8760
FRESH FROZEN PLASMA	E9842	No	Apheresis IMMUNE PLASMA	Apheresis IMMUNE PLASMA CPD/XX/<=-25C For mnf.injectable SARS-CoV-2	PLASMA AFR Imm CPD MNFI SARS-CoV-2	8760
FRESH FROZEN PLASMA	E9846	Yes	Thawed Apheresis CONVALESCENT PLASMA	Thawed Apheresis CONVALESCENT PLASMA NS/XX/refg Psoralen-treated COVID-19	PLASMA Conv AFR Thaw NS Psoraln COVID-19	120
FRESH FROZEN PLASMA	E9847	Yes	CONVALESCENT PLASMA	CONVALESCENT PLASMA CPD/XX/<=-18C Methylene blue-treated COVID-19	PLASMA Conv CPD Methyl Blue COVID-19	8760
FRESH FROZEN PLASMA	E9848	Yes	CONVALESCENT PLASMA	CONVALESCENT PLASMA CPD/XX/<=-25C Methylene blue-treated COVID-19	PLASMA Conv CPD Methyl Blue COVID-19	8760

Component	Product Code	Modifiable	Product Type	Long Name	Short Name	Maximum Storage Hours
FRESH FROZEN PLASMA	E9849	Yes	Apheresis CONVALESCENT PLASMA	Apheresis CONVALESCENT PLASMA NaCitrate/XX/<=25C Methylene blue-treated COVID-19	PLASMA AFR Conv NaCit Methyl Blue COVID-19	8760
FRESH FROZEN PLASMA	E9850	Yes	Apheresis CONVALESCENT PLASMA	Apheresis CONVALESCENT PLASMA NaCitrate/XX/<=25C Riboflavin-treated COVID-19	PLASMA AFR Conv NaCit Ribo COVID-19	8760
FRESH FROZEN PLASMA	E9851	Yes	Apheresis CONVALESCENT PLASMA	Apheresis CONVALESCENT PLASMA NaCitrate/XX/<=25C Psoralen-treated COVID-19	PLASMA AFR Conv NaCit Psoraln COVID-19	8760
FRESH FROZEN PLASMA	E9852	Yes	Apheresis CONVALESCENT PLASMA	Apheresis CONVALESCENT PLASMA ACD-A/XX/<=25C Psoralen-treated COVID-19	PLASMA AFR Conv ACD-A Psoraln COVID-19	8760
FRESH FROZEN PLASMA	E9853	Yes	Apheresis CONVALESCENT PLASMA	Apheresis CONVALESCENT PLASMA ACD-A/XX/<=25C Riboflavin-treated COVID-19	PLASMA AFR Conv ACD-A Ribo COVID-19	8760
FRESH FROZEN PLASMA	E9854	Yes	Thawed Apheresis CONVALESCENT PLASMA	Thawed Apheresis CONVALESCENT PLASMA NS/XX/refg Methylene blue-treated COVID-19	PLASMA Conv AFR Thaw NS Methyl Blue COVID-19	120
FRESH FROZEN PLASMA	E9855	Yes	Thawed Apheresis CONVALESCENT PLASMA	Thawed Apheresis CONVALESCENT PLASMA NS/XX/refg Riboflavin-treated COVID-19	PLASMA Conv AFR Thaw NS Ribo COVID-19	120
FRESH FROZEN PLASMA	E9856	Yes	Thawed Apheresis CONVALESCENT PLASMA	Thawed Apheresis CONVALESCENT PLASMA ACD-A/XX/refg Riboflavin-treated COVID-19	PLASMA Conv AFR Thaw ACD-A Ribo COVID-19	120
FRESH FROZEN PLASMA	E9857	Yes	Thawed CONVALESCENT PLASMA	Thawed CONVALESCENT PLASMA CPDA-1/XX/refg Psoralen-treated COVID-19	PLASMA Conv Thaw CPDA-1 Psoraln COVID-19	120
FRESH FROZEN PLASMA	E9858	Yes	Thawed CONVALESCENT PLASMA	Thawed CONVALESCENT PLASMA CPD/XX/refg Methylene blue-treated COVID-19	PLASMA Conv Thaw CPD Methyl Blue COVID-19	120
FRESH FROZEN PLASMA	E9859	Yes	Thawed Apheresis CONVALESCENT PLASMA	Thawed Apheresis CONVALESCENT PLASMA NaCitrate/XX/refg Riboflavin-treated COVID-19	PLASMA Conv AFR Thaw NaCit Ribo COVID-19	120
FRESH FROZEN PLASMA	E9860	Yes	Thawed Apheresis CONVALESCENT PLASMA	Thawed Apheresis CONVALESCENT PLASMA NaCitrate/XX/refg Psoralen-treated COVID-19	PLASMA Conv AFR Thaw NaCit Psoraln COVID-19	120
FRESH FROZEN PLASMA	E9861	Yes	Thawed CONVALESCENT PLASMA	Thawed CONVALESCENT PLASMA CPD/XX/refg Riboflavin-treated COVID-19	PLASMA Conv Thaw CPD Ribo COVID-19	120
FRESH FROZEN PLASMA	E9862	No	Apheresis IMMUNE PLASMA	Apheresis IMMUNE PLASMA ACD-A/XX/<=18C For mnf:injectable SARS-CoV-2	PLASMA AFR Imm ACD-A MNFI SARS-CoV-2	8760
FRESH FROZEN PLASMA	E9863	No	Apheresis IMMUNE PLASMA	Apheresis IMMUNE PLASMA ACD-A/XX/<=18C For mnf:injectable 1st container SARS-CoV-2	PLASMA AFR Imm ACD-A MNFI 1C SARS-CoV-2	8760
FRESH FROZEN PLASMA	E9864	No	Apheresis IMMUNE PLASMA	Apheresis IMMUNE PLASMA ACD-A/XX/<=18C For mnf:injectable 2nd container SARS-CoV-2	PLASMA AFR Imm ACD-A MNFI 2C SARS-CoV-2	8760
FRESH FROZEN PLASMA	E9865	No	Apheresis IMMUNE PLASMA	Apheresis IMMUNE PLASMA ACD-A/XX/<=18C For mnf:injectable 3rd container SARS-CoV-2	PLASMA AFR Imm ACD-A MNFI 3C SARS-CoV-2	8760

**Table 3: Other Blood Products not related to COVID-19 treatment**

Component	Product Code	Modifiable	Product Type	Long Name	Short Name	Maximum Storage Hours
RED BLOOD CELLS	E9828	Yes	RED BLOOD CELLS	RED BLOOD CELLS CPD>AS5/500mL/refg ResLeu:NS Supernat rem/Plasma added	RBC CPD>AS5 LUKOPR SR/PA	1008
RED BLOOD CELLS	E9829	Yes	RED BLOOD CELLS	RED BLOOD CELLS CPD>AS5/500mL/refg Irradiated ResLeu:NS Supernat rem/Plasma added	RBC CPD>AS5 IRD LUKOPR SR/PA	672
RED BLOOD CELLS	E9830	Yes	Apheresis RED BLOOD CELLS	Apheresis RED BLOOD CELLS CP2D>AS3/XX/refg ResLeu:NS Supernat rem/Plasma added	RBC AFR CP2D>AS3 LUKOPR SR/PA	1008
RED BLOOD CELLS	E9831	Yes	Apheresis RED BLOOD CELLS	Apheresis RED BLOOD CELLS CP2D>AS3/XX/refg ResLeu:NS Supernat rem/Plasma added 1st container	RBC AFR CP2D>AS3 LUKOPR SR/PA 1C	1008
RED BLOOD CELLS	E9832	Yes	Apheresis RED BLOOD CELLS	Apheresis RED BLOOD CELLS CP2D>AS3/XX/refg ResLeu:NS Supernat rem/Plasma added 2nd container	RBC AFR CP2D>AS3 LUKOPR SR/PA 2C	1008
RED BLOOD CELLS	E9833	Yes	Apheresis RED BLOOD CELLS	Apheresis RED BLOOD CELLS CP2D>AS3/XX/refg Irradiated ResLeu:NS Supernat rem/Plasma added	RBC AFR CP2D>AS3 IRD LUKOPR SR/PA	672
RED BLOOD CELLS	E9834	Yes	Apheresis RED BLOOD CELLS	Apheresis RED BLOOD CELLS CP2D>AS3/XX/refg Irradiated ResLeu:NS Supernat rem/Plasma added 1st container	RBC AFR CP2D>AS3 IRD LUKOPR SR/PA 1C	672
RED BLOOD CELLS	E9835	Yes	Apheresis RED BLOOD CELLS	Apheresis RED BLOOD CELLS CP2D>AS3/XX/refg Irradiated ResLeu:NS Supernat rem/Plasma added 2nd container	RBC AFR CP2D>AS3 IRD LUKOPR SR/PA 2C	672
PLATELETS	E9836	Yes	Apheresis PLATELETS	Apheresis PLATELETS ACD-A/XX/20-24C Open ResLeu:<5E6 Plasma reduced/Saline added 1st container	PLT AFR ACD-A OPN LUKOPR PLS Red/SAL Add 1C	4
PLATELETS	E9837	Yes	Apheresis PLATELETS	Apheresis PLATELETS ACD-A/XX/20-24C Open ResLeu:<5E6 Plasma reduced/Saline added 2nd container	PLT AFR ACD-A OPN LUKOPR PLS Red/SAL Add 2C	4
PLATELETS	E9838	Yes	Apheresis PLATELETS	Apheresis PLATELETS ACD-A/XX/20-24C Open ResLeu:<5E6 Plasma reduced/Saline added 3rd container	PLT AFR ACD-A OPN LUKOPR PLS Red/SAL Add 3C	4
PLATELETS	E9839	Yes	Apheresis PLATELETS	Apheresis PLATELETS ACD-A/XX/20-24C ResLeu:<5E6 4th container Bacterial test D5	PLT AFR ACD-A LUKOPR 4C BacTest D5	24
PLATELETS	E9840	Yes	Apheresis PLATELETS	Apheresis PLATELETS ACD-A/XX/20-24C Irradiated ResLeu:<5E6 4th container Bacterial test D5	PLT AFR ACD-A IRD LUKOPR 4C BacTest D5	24
OTHER	E9843	Yes	POOLED LEUKOCYTES	POOLED LEUKOCYTES CPD/XX/20-24C	LEUK Pool CPD	24
FRESH FROZEN PLASMA	E9844	Yes	Lyophilized FRESH FROZEN PLASMA	Lyophilized FRESH FROZEN PLASMA CPDA-1/XX/refg	FFP Lyfo CPDA-1	8760
FRESH FROZEN PLASMA	E9845	Yes	Lyophilized FRESH FROZEN PLASMA	Lyophilized FRESH FROZEN PLASMA CPDA-1/XX/rt	FFP Lyfo CPDA-1	8760



**Table 4: Possible Modifications Using Newly Added Products**

Modification	Method	Source Product Code	Source Product Name	Target Product Code	Target Product Name
Thaw	CLOSED	E9741	Apheresis CONVALESCENT PLASMA ACD-A/XX/<=-40C Methylene blue-treated COVID-19	E9813	Thawed Apheresis CONVALESCENT PLASMA ACD-A/XX/refg Methylene blue-treated COVID-19
Thaw	CLOSED	E9744	Apheresis CONVALESCENT PLASMA NS/XX/<=-25C Methylene blue-treated COVID-19	E9854	Thawed Apheresis CONVALESCENT PLASMA NS/XX/refg Methylene blue-treated COVID-19
Thaw	CLOSED	E9745	Apheresis CONVALESCENT PLASMA NS/XX/<=-25C Psoralen-treated COVID-19	E9846	Thawed Apheresis CONVALESCENT PLASMA NS/XX/refg Psoralen-treated COVID-19
Thaw	CLOSED	E9746	Apheresis CONVALESCENT PLASMA NS/XX/<=-25C Riboflavin-treated COVID-19	E9855	Thawed Apheresis CONVALESCENT PLASMA NS/XX/refg Riboflavin-treated COVID-19
Thaw	CLOSED	E9767	Apheresis CONVALESCENT PLASMA NS/XX/<=-18C Methylene blue-treated COVID-19	E9854	Thawed Apheresis CONVALESCENT PLASMA NS/XX/refg Methylene blue-treated COVID-19
Thaw	CLOSED	E9768	Apheresis CONVALESCENT PLASMA NS/XX/<=-18C Psoralen-treated COVID-19	E9846	Thawed Apheresis CONVALESCENT PLASMA NS/XX/refg Psoralen-treated COVID-19
Thaw	CLOSED	E9769	Apheresis CONVALESCENT PLASMA NS/XX/<=-18C Riboflavin-treated COVID-19	E9855	Thawed Apheresis CONVALESCENT PLASMA NS/XX/refg Riboflavin-treated COVID-19
Thaw	CLOSED	E9770	Apheresis CONVALESCENT PLASMA ACD-A/XX/<=-18C Methylene blue-treated COVID-19	E9813	Thawed Apheresis CONVALESCENT PLASMA ACD-A/XX/refg Methylene blue-treated COVID-19
Thaw	CLOSED	E9772	Apheresis CONVALESCENT PLASMA ACD-A/XX/<=-18C Riboflavin-treated COVID-19	E9856	Thawed Apheresis CONVALESCENT PLASMA ACD-A/XX/refg Riboflavin-treated COVID-19
Thaw	CLOSED	E9801	CONVALESCENT PLASMA CPD/XX/<=-18C Irradiated COVID-19	E9814	Thawed CONVALESCENT PLASMA CPD/XX/refg Irradiated COVID-19
Thaw	CLOSED	E9805	CONVALESCENT PLASMA CPDA-1/XX/<=-18C Psoralen-treated COVID-19	E9857	Thawed CONVALESCENT PLASMA CPDA-1/XX/refg Psoralen-treated COVID-19
Thaw	CLOSED	E9812	Apheresis CONVALESCENT PLASMA ACD-A/XX/<=-25C Methylene blue-treated COVID-19	E9813	Thawed Apheresis CONVALESCENT PLASMA ACD-A/XX/refg Methylene blue-treated COVID-19
Thaw	CLOSED	E9815	Apheresis CONVALESCENT PLASMA ACD-A/XX/<=-18C Irradiated 1st container COVID-19	E9819	Thawed Apheresis CONVALESCENT PLASMA ACD-A/XX/refg Irradiated 1st container COVID-19
Thaw	CLOSED	E9816	Apheresis CONVALESCENT PLASMA ACD-A/XX/<=-18C Irradiated 2nd container COVID-19	E9820	Thawed Apheresis CONVALESCENT PLASMA ACD-A/XX/refg Irradiated 2nd container COVID-19
Thaw	CLOSED	E9817	Apheresis CONVALESCENT PLASMA ACD-A/XX/<=-18C Irradiated 3rd container COVID-19	E9821	Thawed Apheresis CONVALESCENT PLASMA ACD-A/XX/refg Irradiated 3rd container COVID-19
Thaw	CLOSED	E9818	Apheresis CONVALESCENT PLASMA ACD-A/XX/<=-18C Irradiated 4th container COVID-19	E9822	Thawed Apheresis CONVALESCENT PLASMA ACD-A/XX/refg Irradiated 4th container COVID-19
Thaw	CLOSED	E9823	Apheresis CONVALESCENT PLASMA ACD-A/XX/<=-18C 5th container COVID-19	E9824	Thawed Apheresis CONVALESCENT PLASMA ACD-A/XX/refg 5th container COVID-19
Thaw	CLOSED	E9825	CONVALESCENT PLASMA CPD/450mL/<=-25C Methylene blue-treated COVID-19	E9858	Thawed CONVALESCENT PLASMA CPD/XX/refg Methylene blue-treated COVID-19
Thaw	CLOSED	E9826	Apheresis CONVALESCENT PLASMA NaCitrate/XX/<=-18C Riboflavin-treated COVID-19	E9859	Thawed Apheresis CONVALESCENT PLASMA NaCitrate/XX/refg Riboflavin-treated COVID-19
Thaw	CLOSED	E9827	Apheresis CONVALESCENT PLASMA NaCitrate/XX/<=-18C Psoralen-treated COVID-19	E9860	Thawed Apheresis CONVALESCENT PLASMA NaCitrate/XX/refg Psoralen-treated COVID-19
Thaw	CLOSED	E9847	CONVALESCENT PLASMA CPD/XX/<=-18C Methylene blue-treated COVID-19	E9858	Thawed CONVALESCENT PLASMA CPD/XX/refg Methylene blue-treated COVID-19
Thaw	CLOSED	E9848	CONVALESCENT PLASMA CPD/XX/<=-25C Methylene blue-treated COVID-19	E9858	Thawed CONVALESCENT PLASMA CPD/XX/refg Methylene blue-treated COVID-19

Modification	Method	Source Product Code	Source Product Name	Target Product Code	Target Product Name
Thaw	CLOSED	E9849	Apheresis CONVALESCENT PLASMA NaCitrate/XX/<=-25C Methylene blue-treated COVID-19	E9854	Thawed Apheresis CONVALESCENT PLASMA NS/XX/refg Methylene blue-treated COVID-19
Thaw	CLOSED	E9850	Apheresis CONVALESCENT PLASMA NaCitrate/XX/<=-25C Riboflavin-treated COVID-19	E9859	Thawed Apheresis CONVALESCENT PLASMA NaCitrate/XX/refg Riboflavin-treated COVID-19
Thaw	CLOSED	E9851	Apheresis CONVALESCENT PLASMA NaCitrate/XX/<=-25C Psoralen-treated COVID-19	E9860	Thawed Apheresis CONVALESCENT PLASMA NaCitrate/XX/refg Psoralen-treated COVID-19
Thaw	CLOSED	E9852	Apheresis CONVALESCENT PLASMA ACD-A/XX/<=-25C Psoralen-treated COVID-19	E9788	Thawed Apheresis CONVALESCENT PLASMA ACD-A/XX/refg Psoralen-treated COVID-19
Thaw	CLOSED	E9853	Apheresis CONVALESCENT PLASMA ACD-A/XX/<=-25C Riboflavin-treated COVID-19	E9856	Thawed Apheresis CONVALESCENT PLASMA ACD-A/XX/refg Riboflavin-treated COVID-19
Irradiate	CLOSED	E9762	Thawed Apheresis CONVALESCENT PLASMA ACD-A/XX/refg 1st container COVID-19	E9819	Thawed Apheresis CONVALESCENT PLASMA ACD-A/XX/refg Irradiated 1st container COVID-19
Irradiate	CLOSED	E9763	Thawed Apheresis CONVALESCENT PLASMA ACD-A/XX/refg 2nd container COVID-19	E9820	Thawed Apheresis CONVALESCENT PLASMA ACD-A/XX/refg Irradiated 2nd container COVID-19
Irradiate	CLOSED	E9764	Thawed Apheresis CONVALESCENT PLASMA ACD-A/XX/refg 3rd container COVID-19	E9821	Thawed Apheresis CONVALESCENT PLASMA ACD-A/XX/refg Irradiated 3rd container COVID-19
Irradiate	CLOSED	E9765	Thawed Apheresis CONVALESCENT PLASMA ACD-A/XX/refg 4th container COVID-19	E9822	Thawed Apheresis CONVALESCENT PLASMA ACD-A/XX/refg Irradiated 4th container COVID-19
Irradiate	CLOSED	E9780	Thawed CONVALESCENT PLASMA CPD/XX/refg COVID-19	E9814	Thawed CONVALESCENT PLASMA CPD/XX/refg Irradiated COVID-19
Irradiate	CLOSED	E9828	RED BLOOD CELLS CPD>AS5/500mL/refg ResLeu:NS Supernat rem/Plasma added	E9829	RED BLOOD CELLS CPD>AS5/500mL/refg Irradiated ResLeu:NS Supernat rem/Plasma added
Irradiate	CLOSED	E9830	Apheresis RED BLOOD CELLS CP2D>AS3/XX/refg ResLeu:NS Supernat rem/Plasma added	E9833	Apheresis RED BLOOD CELLS CP2D>AS3/XX/refg Irradiated ResLeu:NS Supernat rem/Plasma added
Irradiate	CLOSED	E9831	Apheresis RED BLOOD CELLS CP2D>AS3/XX/refg ResLeu:NS Supernat rem/Plasma added 1st container	E9834	Apheresis RED BLOOD CELLS CP2D>AS3/XX/refg Irradiated ResLeu:NS Supernat rem/Plasma added 1st container
Irradiate	CLOSED	E9832	Apheresis RED BLOOD CELLS CP2D>AS3/XX/refg ResLeu:NS Supernat rem/Plasma added 2nd container	E9835	Apheresis RED BLOOD CELLS CP2D>AS3/XX/refg Irradiated ResLeu:NS Supernat rem/Plasma added 2nd container
Irradiate	CLOSED	E9836	Apheresis PLATELETS ACD-A/XX/20-24C Open ResLeu:<5E6 Plasma reduced/Saline added 1st container	E2993	Apheresis PLATELETS ACD-A/XX/20-24C Open Irradiated ResLeu:<5E6 1st container
Irradiate	CLOSED	E9836	Apheresis PLATELETS ACD-A/XX/20-24C Open ResLeu:<5E6 Plasma reduced/Saline added 1st container	E8046	Apheresis PLATELETS ACD-A/XX/20-24C Open Irradiated ResLeu:<5E6 Plasma reduced/Saline added 1st container
Irradiate	CLOSED	E9837	Apheresis PLATELETS ACD-A/XX/20-24C Open ResLeu:<5E6 Plasma reduced/Saline added 2nd container	E2994	Apheresis PLATELETS ACD-A/XX/20-24C Open Irradiated ResLeu:<5E6 2nd container
Irradiate	CLOSED	E9837	Apheresis PLATELETS ACD-A/XX/20-24C Open ResLeu:<5E6 Plasma reduced/Saline added 2nd container	E8048	Apheresis PLATELETS ACD-A/XX/20-24C Open Irradiated ResLeu:<5E6 Plasma reduced/Saline added 2nd container
Irradiate	CLOSED	E9838	Apheresis PLATELETS ACD-A/XX/20-24C Open ResLeu:<5E6 Plasma reduced/Saline added 3rd container	E2995	Apheresis PLATELETS ACD-A/XX/20-24C Open Irradiated ResLeu:<5E6 3rd container

Modification	Method	Source Product Code	Source Product Name	Target Product Code	Target Product Name
Irradiate	CLOSED	E9838	Apheresis PLATELETS ACD-A/XX/20-24C Open ResLeu:<5E6 Plasma reduced/Saline added 3rd container	E8050	Apheresis PLATELETS ACD-A/XX/20-24C Open Irradiated ResLeu:<5E6 Plasma reduced/Saline added 3rd container
Irradiate	CLOSED	E9839	Apheresis PLATELETS ACD-A/XX/20-24C ResLeu:<5E6 4th container Bacterial test D5	E9840	Apheresis PLATELETS ACD-A/XX/20-24C Irradiated ResLeu:<5E6 4th container Bacterial test D5
Leukoreduce	CLOSED	E0423	RED BLOOD CELLS CPD>AS5/500mL/refg Irradiated Supernat rem/Plasma added	E9829	RED BLOOD CELLS CPD>AS5/500mL/refg Irradiated ResLeu:NS Supernat rem/Plasma added
Leukoreduce	CLOSED	E0428	RED BLOOD CELLS CPD>AS5/500mL/refg Supernat rem/Plasma added	E9828	RED BLOOD CELLS CPD>AS5/500mL/refg ResLeu:NS Supernat rem/Plasma added
Leukoreduce	CLOSED	E0673	Apheresis RED BLOOD CELLS CP2D>AS3/XX/refg Irradiated Supernat rem/Plasma added	E9833	Apheresis RED BLOOD CELLS CP2D>AS3/XX/refg Irradiated ResLeu:NS Supernat rem/Plasma added
Leukoreduce	CLOSED	E0674	Apheresis RED BLOOD CELLS CP2D>AS3/XX/refg Irradiated Supernat rem/Plasma added 1st container	E9834	Apheresis RED BLOOD CELLS CP2D>AS3/XX/refg Irradiated ResLeu:NS Supernat rem/Plasma added 1st container
Leukoreduce	CLOSED	E0675	Apheresis RED BLOOD CELLS CP2D>AS3/XX/refg Irradiated Supernat rem/Plasma added 2nd container	E9835	Apheresis RED BLOOD CELLS CP2D>AS3/XX/refg Irradiated ResLeu:NS Supernat rem/Plasma added 2nd container
Leukoreduce	CLOSED	E0690	Apheresis RED BLOOD CELLS CP2D>AS3/XX/refg Supernat rem/Plasma added	E9830	Apheresis RED BLOOD CELLS CP2D>AS3/XX/refg ResLeu:NS Supernat rem/Plasma added
Leukoreduce	CLOSED	E0691	Apheresis RED BLOOD CELLS CP2D>AS3/XX/refg Supernat rem/Plasma added 1st container	E9831	Apheresis RED BLOOD CELLS CP2D>AS3/XX/refg ResLeu:NS Supernat rem/Plasma added 1st container
Leukoreduce	CLOSED	E0692	Apheresis RED BLOOD CELLS CP2D>AS3/XX/refg Supernat rem/Plasma added 2nd container	E9832	Apheresis RED BLOOD CELLS CP2D>AS3/XX/refg ResLeu:NS Supernat rem/Plasma added 2nd container
Split/Divide	CLOSED	E9813	Thawed Apheresis CONVALESCENT PLASMA ACD-A/XX/refg Methylene blue-treated COVID-19	E9813	Thawed Apheresis CONVALESCENT PLASMA ACD-A/XX/refg Methylene blue-treated COVID-19
Split/Divide	CLOSED	E9814	Thawed CONVALESCENT PLASMA CPD/XX/refg Irradiated COVID-19	E9814	Thawed CONVALESCENT PLASMA CPD/XX/refg Irradiated COVID-19
Split/Divide	CLOSED	E9819	Thawed Apheresis CONVALESCENT PLASMA ACD-A/XX/refg Irradiated 1st container COVID-19	E9819	Thawed Apheresis CONVALESCENT PLASMA ACD-A/XX/refg Irradiated 1st container COVID-19
Split/Divide	CLOSED	E9820	Thawed Apheresis CONVALESCENT PLASMA ACD-A/XX/refg Irradiated 2nd container COVID-19	E9820	Thawed Apheresis CONVALESCENT PLASMA ACD-A/XX/refg Irradiated 2nd container COVID-19
Split/Divide	CLOSED	E9821	Thawed Apheresis CONVALESCENT PLASMA ACD-A/XX/refg Irradiated 3rd container COVID-19	E9821	Thawed Apheresis CONVALESCENT PLASMA ACD-A/XX/refg Irradiated 3rd container COVID-19
Split/Divide	CLOSED	E9822	Thawed Apheresis CONVALESCENT PLASMA ACD-A/XX/refg Irradiated 4th container COVID-19	E9822	Thawed Apheresis CONVALESCENT PLASMA ACD-A/XX/refg Irradiated 4th container COVID-19
Split/Divide	CLOSED	E9824	Thawed Apheresis CONVALESCENT PLASMA ACD-A/XX/refg 5th container COVID-19	E9824	Thawed Apheresis CONVALESCENT PLASMA ACD-A/XX/refg 5th container COVID-19
Split/Divide	CLOSED	E9828	RED BLOOD CELLS CPD>AS5/500mL/refg ResLeu:NS Supernat rem/Plasma added	E9828	RED BLOOD CELLS CPD>AS5/500mL/refg ResLeu:NS Supernat rem/Plasma added

Modification	Method	Source Product Code	Source Product Name	Target Product Code	Target Product Name
Split/Divide	CLOSED	E9829	RED BLOOD CELLS CPD>AS5/500mL/refg Irradiated ResLeu:NS Supernat rem/Plasma added	E9829	RED BLOOD CELLS CPD>AS5/500mL/refg Irradiated ResLeu:NS Supernat rem/Plasma added
Split/Divide	CLOSED	E9830	Apheresis RED BLOOD CELLS CP2D>AS3/XX/refg ResLeu:NS Supernat rem/Plasma added	E9830	Apheresis RED BLOOD CELLS CP2D>AS3/XX/refg ResLeu:NS Supernat rem/Plasma added
Split/Divide	CLOSED	E9831	Apheresis RED BLOOD CELLS CP2D>AS3/XX/refg ResLeu:NS Supernat rem/Plasma added 1st container	E9831	Apheresis RED BLOOD CELLS CP2D>AS3/XX/refg ResLeu:NS Supernat rem/Plasma added 1st container
Split/Divide	CLOSED	E9832	Apheresis RED BLOOD CELLS CP2D>AS3/XX/refg ResLeu:NS Supernat rem/Plasma added 2nd container	E9832	Apheresis RED BLOOD CELLS CP2D>AS3/XX/refg ResLeu:NS Supernat rem/Plasma added 2nd container
Split/Divide	CLOSED	E9833	Apheresis RED BLOOD CELLS CP2D>AS3/XX/refg Irradiated ResLeu:NS Supernat rem/Plasma added	E9833	Apheresis RED BLOOD CELLS CP2D>AS3/XX/refg Irradiated ResLeu:NS Supernat rem/Plasma added
Split/Divide	CLOSED	E9834	Apheresis RED BLOOD CELLS CP2D>AS3/XX/refg Irradiated ResLeu:NS Supernat rem/Plasma added 1st container	E9834	Apheresis RED BLOOD CELLS CP2D>AS3/XX/refg Irradiated ResLeu:NS Supernat rem/Plasma added 1st container
Split/Divide	CLOSED	E9835	Apheresis RED BLOOD CELLS CP2D>AS3/XX/refg Irradiated ResLeu:NS Supernat rem/Plasma added 2nd container	E9835	Apheresis RED BLOOD CELLS CP2D>AS3/XX/refg Irradiated ResLeu:NS Supernat rem/Plasma added 2nd container
Split/Divide	CLOSED	E9836	Apheresis PLATELETS ACD-A/XX/20-24C Open ResLeu:<5E6 Plasma reduced/Saline added 1st container	E9836	Apheresis PLATELETS ACD-A/XX/20-24C Open ResLeu:<5E6 Plasma reduced/Saline added 1st container
Split/Divide	CLOSED	E9837	Apheresis PLATELETS ACD-A/XX/20-24C Open ResLeu:<5E6 Plasma reduced/Saline added 2nd container	E9837	Apheresis PLATELETS ACD-A/XX/20-24C Open ResLeu:<5E6 Plasma reduced/Saline added 2nd container
Split/Divide	CLOSED	E9838	Apheresis PLATELETS ACD-A/XX/20-24C Open ResLeu:<5E6 Plasma reduced/Saline added 3rd container	E9838	Apheresis PLATELETS ACD-A/XX/20-24C Open ResLeu:<5E6 Plasma reduced/Saline added 3rd container
Split/Divide	CLOSED	E9839	Apheresis PLATELETS ACD-A/XX/20-24C ResLeu:<5E6 4th container Bacterial test D5	E9839	Apheresis PLATELETS ACD-A/XX/20-24C ResLeu:<5E6 4th container Bacterial test D5
Split/Divide	CLOSED	E9840	Apheresis PLATELETS ACD-A/XX/20-24C Irradiated ResLeu:<5E6 4th container Bacterial test D5	E9840	Apheresis PLATELETS ACD-A/XX/20-24C Irradiated ResLeu:<5E6 4th container Bacterial test D5
Split/Divide	CLOSED	E9843	POOLED LEUKOCYTES CPD/XX/20-24C	E9843	POOLED LEUKOCYTES CPD/XX/20-24C
Split/Divide	CLOSED	E9846	Thawed Apheresis CONVALESCENT PLASMA NS/XX/refg Psoralen-treated COVID-19	E9846	Thawed Apheresis CONVALESCENT PLASMA NS/XX/refg Psoralen-treated COVID-19
Split/Divide	CLOSED	E9854	Thawed Apheresis CONVALESCENT PLASMA NS/XX/refg Methylene blue-treated COVID-19	E9854	Thawed Apheresis CONVALESCENT PLASMA NS/XX/refg Methylene blue-treated COVID-19
Split/Divide	CLOSED	E9855	Thawed Apheresis CONVALESCENT PLASMA NS/XX/refg Riboflavin-treated COVID-19	E9855	Thawed Apheresis CONVALESCENT PLASMA NS/XX/refg Riboflavin-treated COVID-19
Split/Divide	CLOSED	E9856	Thawed Apheresis CONVALESCENT PLASMA ACD-A/XX/refg Riboflavin-treated COVID-19	E9856	Thawed Apheresis CONVALESCENT PLASMA ACD-A/XX/refg Riboflavin-treated COVID-19
Split/Divide	CLOSED	E9857	Thawed CONVALESCENT PLASMA CPDA-1/XX/refg Psoralen-treated COVID-19	E9857	Thawed CONVALESCENT PLASMA CPDA-1/XX/refg Psoralen-treated COVID-19
Split/Divide	CLOSED	E9858	Thawed CONVALESCENT PLASMA CPD/XX/refg Methylene blue-treated COVID-19	E9858	Thawed CONVALESCENT PLASMA CPD/XX/refg Methylene blue-treated COVID-19
Split/Divide	CLOSED	E9859	Thawed Apheresis CONVALESCENT PLASMA NaCitrate/XX/refg Riboflavin-treated COVID-19	E9859	Thawed Apheresis CONVALESCENT PLASMA NaCitrate/XX/refg Riboflavin-treated COVID-19

Modification	Method	Source Product Code	Source Product Name	Target Product Code	Target Product Name
Split/Divide	CLOSED	E9860	Thawed Apheresis CONVALESCENT PLASMA NaCitrate/XX/refg Psoralen-treated COVID-19	E9860	Thawed Apheresis CONVALESCENT PLASMA NaCitrate/XX/refg Psoralen-treated COVID-19
Split/Divide	CLOSED	E9861	Thawed CONVALESCENT PLASMA CPD/XX/refg Riboflavin-treated COVID-19	E9861	Thawed CONVALESCENT PLASMA CPD/XX/refg Riboflavin-treated COVID-19
Split/Divide	OPEN	E9828	RED BLOOD CELLS CPD>AS5/500mL/refg ResLeu:NS Supernat rem/Plasma added	E8240	RED BLOOD CELLS CPD>AS5/500mL/refg Open ResLeu:NS Supernat rem/Plasma added
Split/Divide	OPEN	E9836	Apheresis PLATELETS ACD-A/XX/20-24C Open ResLeu:<5E6 Plasma reduced/Saline added 1st container	E9836	Apheresis PLATELETS ACD-A/XX/20-24C Open ResLeu:<5E6 Plasma reduced/Saline added 1st container
Split/Divide	OPEN	E9837	Apheresis PLATELETS ACD-A/XX/20-24C Open ResLeu:<5E6 Plasma reduced/Saline added 2nd container	E9837	Apheresis PLATELETS ACD-A/XX/20-24C Open ResLeu:<5E6 Plasma reduced/Saline added 2nd container
Split/Divide	OPEN	E9838	Apheresis PLATELETS ACD-A/XX/20-24C Open ResLeu:<5E6 Plasma reduced/Saline added 3rd container	E9838	Apheresis PLATELETS ACD-A/XX/20-24C Open ResLeu:<5E6 Plasma reduced/Saline added 3rd container
Wash	OPEN	E9828	RED BLOOD CELLS CPD>AS5/500mL/refg ResLeu:NS Supernat rem/Plasma added	E8563	Washed RED BLOOD CELLS None/XX/refg Open ResLeu:NS Plasma added
Wash	OPEN	E9829	RED BLOOD CELLS CPD>AS5/500mL/refg Irradiated ResLeu:NS Supernat rem/Plasma added	E8408	Washed RED BLOOD CELLS None/XX/refg Open Irradiated ResLeu:NS Supernat rem/Plasma added
Wash	OPEN	E9833	Apheresis RED BLOOD CELLS CP2D>AS3/XX/refg Irradiated ResLeu:NS Supernat rem/Plasma added	E8444	Washed Apheresis RED BLOOD CELLS None/XX/refg Open Irradiated ResLeu:NS Plasma added
Wash	OPEN	E9834	Apheresis RED BLOOD CELLS CP2D>AS3/XX/refg Irradiated ResLeu:NS Supernat rem/Plasma added 1st container	E8442	Washed Apheresis RED BLOOD CELLS None/XX/refg Open Irradiated ResLeu:NS Plasma added 1st container
Wash	OPEN	E9835	Apheresis RED BLOOD CELLS CP2D>AS3/XX/refg Irradiated ResLeu:NS Supernat rem/Plasma added 2nd container	E8443	Washed Apheresis RED BLOOD CELLS None/XX/refg Open Irradiated ResLeu:NS Plasma added 2nd container
Wash	OPEN	E9836	Apheresis PLATELETS ACD-A/XX/20-24C Open ResLeu:<5E6 Plasma reduced/Saline added 1st container	E3558	Washed Apheresis PLATELETS None/XX/20-24C Open ResLeu:<5E6 1st container
Wash	OPEN	E9837	Apheresis PLATELETS ACD-A/XX/20-24C Open ResLeu:<5E6 Plasma reduced/Saline added 2nd container	E3559	Washed Apheresis PLATELETS None/XX/20-24C Open ResLeu:<5E6 2nd container
Wash	OPEN	E9838	Apheresis PLATELETS ACD-A/XX/20-24C Open ResLeu:<5E6 Plasma reduced/Saline added 3rd container	E3560	Washed Apheresis PLATELETS None/XX/20-24C Open ResLeu:<5E6 3rd container

This is the last page of *VistA Blood Establishment Computer Software (VBECS) 2.3.2 Rev E Release Notes*.