



Vista Blood Establishment Computer Software (VBECS) 2.3.2 Rev G

Release Notes Version 1.0

Department of Veterans Affairs
Enterprise Project Management Office

This page intentionally left blank.

Revision History

Date	Revision	Description	Author
11/25/20	1.0	VBECS 2.3.2 Rev G Initial version	BBM Team

This page intentionally left blank.

Table of Contents

- REVISION HISTORY I**
- INTRODUCTION..... 1**
- CHANGED FEATURES AND FUNCTIONS..... 1**
 - UNTESTABLE SYSTEM-LEVEL MAINTENANCE CHANGES 1
 - VISTA SOFTWARE DEPENDENCIES 1
 - VBECs USER DOCUMENTS 2
- CUSTOMER SUPPORT 4**
 - PROBLEMS?..... 4
 - REFERENCES 4
 - VBECs SHAREPOINT SITE 4
- INSTALLATION QUALIFICATION (IQ) DOCUMENTATION..... 5**
- VALIDATION PLANNING 6**
- TABLE 1: UPDATES BY OPTION..... 7**
- TABLE 2: NEW BLOOD PRODUCTS FOR COVID-19 TREATMENT 8**
- TABLE 3: OTHER BLOOD PRODUCTS NOT RELATED TO COVID-19 TREATMENT 18**

This page intentionally left blank.

Introduction

VistA Blood Establishment Computer Software (VBECS) 2.3.2 Rev G Release Notes contains information for changes and corrections made to VBECS in the 2.3.2 Rev G patch.

Perform a local evaluation and risk assessment of the changes to determine the requirements for local validation of the changes, including documentation of the assessment activities. See *Validation Planning*.

Changed Features and Functions

This revision letter patch release is centrally focused around providing additional blood product updates released from International Council for Commonality in Blood Banking Automation, Inc. (ICCBBA) for the treatment of COVID-19 and bacterial monitoring products. Blood products contained in ICCBBA releases 7.38.0 through 7.44.0 are included. In addition to that the VBECS 2.3.2 Rev G patch includes a fix to the issue with Thaw/Pool modification not working for certain product codes.

Table 1: Updates by Option provides a complete list of included changes.

For a full list of new product codes see Table 2: New Blood Products for COVID-19 Treatment and Table 3: Other Blood Products Not Related to COVID-19 Treatment.

Untestable System-Level Maintenance Changes

- None

VistA Software Dependencies

- No VistA patch is required for this blood product-only release.

VBECS User Documents

The following is a list of all the VBECS user documents that apply to the VBECS 2.3.2 Rev G patch release. The **Updated** column identifies the documents that have been updated with this VBECS 2.3.2 Rev G revision letter patch release.

These user documents are available from the VA Software Document Library (VDL) at <https://www.va.gov/vdl/application.asp?appid=182>.

User Document	Version	Updated
<i>VistA Blood Establishment Computer Software (VBECS) 2.3.2 User Guide</i>	6.0	No
<i>VistA Blood Establishment Computer Software (VBECS) 2.3.2 Administrator User Guide</i>	3.0	No
<i>VistA Blood Establishment Computer Software (VBECS) 2.3.2 Known Defects and Anomalies</i>	4.0	No
<i>VistA Blood Establishment Computer Software (VBECS) 2.3.2 Technical Manual-Security Guide</i>	2.0	No
<i>VistA Blood Establishment Computer Software (VBECS) - Echo Interface Configuration and Setup Guide</i>	5.0	No
<i>VistA Blood Establishment Computer Software (VBECS) - Erytra Interface Configuration and Setup Guide</i>	2.0	No
<i>VistA Blood Establishment Computer Software (VBECS) - ProVue Interface Configuration and Setup Guide</i>	5.0	No
<i>VistA Blood Establishment Computer Software (VBECS) - Vision Interface Configuration and Setup Guide</i>	4.0	No

The following is a list of all the VBECS FAQ documents that apply to the VBECS 2.3.2 Rev G patch release. The **Updated** column identifies the documents that have been updated with this VBECS 2.3.2 Rev G revision letter patch release.

These FAQ documents are available from the VA SharePoint site at **REDACTED**.

FAQ Document	Version	Updated
<i>FAQ ABO subgroup Interpretations</i>	11/22/16	No
<i>FAQ Ancillary VistA Validation</i>	11/28/17	No
<i>FAQ Antibodies with No Antigen Negative Requirement</i>	10/15/14	No
<i>FAQ Blood Product Table Processes</i>	03/28/19	No
<i>FAQ CAP Comprehensive Transfusions Medicine Crossmatch Survey</i>	11/22/16	No
<i>FAQ Compound Antibodies</i>	02/27/13	No
<i>FAQ CPRS VBECS Order Details</i>	04/01/09	No
<i>FAQ Database Conversion Oddballs</i>	09/15/09	No
<i>FAQ Documenting Unhandled Exceptions</i>	05/21/07	No
<i>FAQ Handling ABO Incompatible Transfusion Situations</i>	09/23/14	No
<i>FAQ How to File a New Service Request for Changes to VBECS</i>	12/08/16	No
<i>FAQ How to take faster screen shots from Remote Desktop Session</i>	12/17/14	No
<i>FAQ Identifying a Comparable Blood Product Code</i>	03/28/19	No
<i>FAQ Local Facilities</i>	06/12/20	No
<i>FAQ Modification Target Not Available</i>	11/28/17	No
<i>FAQ Multidivisional QC Rack Workaround</i>	11/28/17	No
<i>FAQ Order Status Clarification</i>	11/15/17	No
<i>FAQ Polyspecific AHG Not Used for Testing</i>	01/29/10	No
<i>FAQ Proper Use of PIV Card with VBECS</i>	11/04/19	No
<i>FAQ QC Setup</i>	01/29/10	No
<i>FAQ Retesting QC</i>	11/01/11	No
<i>FAQ Retrieving an Expired Order</i>	12/07/17	No
<i>FAQ The Difference Between Transfusion Only and Full Service Facility Types</i>	02/08/10	No
<i>FAQ VBECS Blood Product Hierarchy</i>	03/28/19	No
<i>FAQ VBECS Computer Crossmatch Decision Tree</i>	02/08/12	No
<i>FAQ Weak D Policy</i>	01/11/10	No
<i>FAQ Workload Assignments Single vs Batch Processing</i>	07/01/20	No

Customer Support

Problems?

Contact your Local Office of Information Technology (OIT) or Laboratory Information Manager (LIM) if you encounter VistA or CPRS connection problems and for training support **before** contacting the Service Desk (SD).

- Ensure local contact information is available at all times. SD support will engage Enterprise Operations (EO) personnel as needed.
- Problems with connectivity to VistA and CPRS may require personnel from EO with VBECS server administrator access and VistA IT support access.
- If you experience a Food and Drug Administration (FDA) reportable adverse event (patient death or serious injury) that VBECS may have caused or contributed to, contact the Service Desk directly to enter a ticket for Blood Bank software support.

If the problem remains unresolved after local VistA triage, call the Service Desk (below) and specify the Enterprise Application be set as VistA Blood Establishment Computer Software. This will cause the Assignment group to default to NTL Alert Blood Bank & VBECS, which alerts the Clin2 team.

Service Desk Contact

REDACTED

References

- *ISBT128 Standard Technical Specification v 5.10.0*
- *Blood Product Revisions ICCBBA Version 7.44.0, November 13th 2020*

VBECS SharePoint Site

The VBECS SharePoint site provides a location for additional information related to the VBECS application such as FAQs, installation status, and release history.

REDACTED.

Installation Qualification (IQ) Documentation

The expedited patch installation process will continue with the installation of VBECS 2.3.2 Rev G.

Test Account Upgrade to VBECS 2.3.2 Revision G	
Required Patch Installation	VistA Patch: None Server Patch: VBECS 2.3.2 Revision G
Installation Process for VBECS 2.3.2 Rev G	Installed by the BBM team, all sites will be installed in one day. The date of installation will be communicated through a ListServ announcement.
Expected Downtime	None
Installation Communication for VBECS 2.3.2 Rev G	The planned completion time for all test installs will be provided on the VBECS SharePoint site.
Site Responsibility	<ul style="list-style-type: none"> • Join VBECS-L message board on ListServ, if needed. • Please communicate any changes to your site supervisor and Point of Contact (POC) since the last patch install to the BBM team to the email group “VA OIT BBM Team”.
Site Record of Patch Installation	Sites should take and save a screenshot of the VBECS Help, About window after the Test installation is performed. This displays the VBECS updated version information.

Production Account Upgrade to VBECS 2.3.2 Revision G	
Required Patch Installation	VistA Patch: None Server Patch: VBECS 2.3.2 Revision G
Installation Process for VBECS 2.3.2 Rev G	Installed by the BBM team, all sites will be installed in one day. The date of installation will be communicated through a ListServ announcement.
Expected Downtime	You will be able to use VBECS during the patch installation. VBECS installation on your production account only lasts a few minutes and is invisible to users. If you encounter any disruption or errors while viewing or printing reports during the installation, try again after a few minutes.
Installation Communication for VBECS 2.3.2 Rev G	The status of production installs will be provided on the VBECS SharePoint site.
Site Responsibility	<ul style="list-style-type: none"> • Perform local validation, training, and set-up requirements prior to Production installation. • Join VBECS-L message board on ListServ, if needed. • Please communicate any changes to your site supervisor and Point of Contact (POC) since the last patch install to the BBM team to the email group “VA OIT BBM Team”.
Site Record of Patch Installation	Sites should take and save a screenshot of the VBECS Help, About window after Production installation is performed. This displays the VBECS updated version information.

Validation Planning

The following is a flowchart to help assess changes for validation planning.

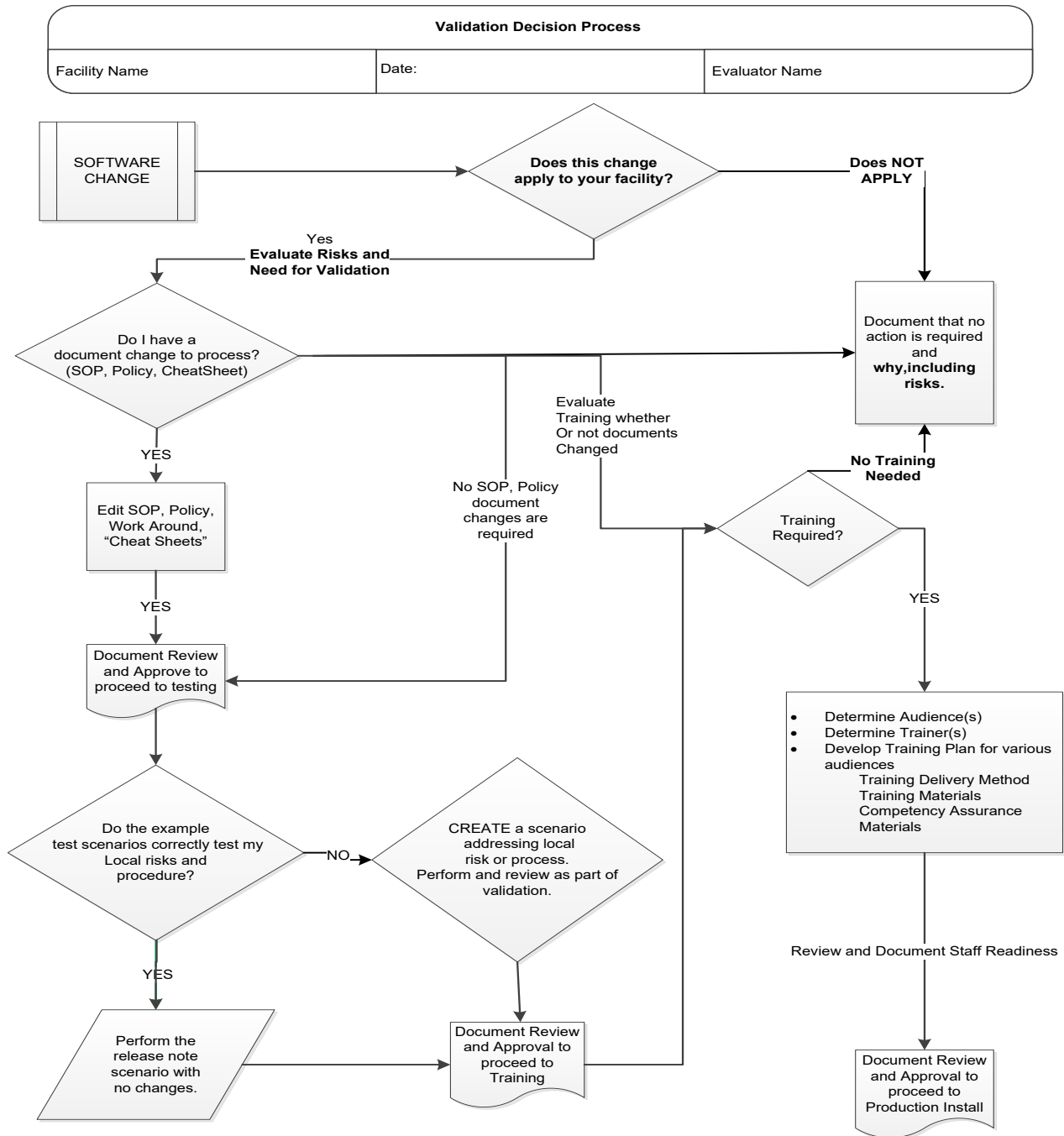


Table 1: Updates by Option

ID	Option	Problem Summary	Change Summary	Validation Scenario	Change applies to my facility. (Y/N)	Local risk Assessment (Low, Med, High)	SOP revision required. If yes, identify it.	Staff training needed. (Y/N)	Scenarios or validation must be performed. (Y/N)
1	Blood Products	Update blood product table with new ICCBBA blood product codes from version 7.38.0, 7.39.0, 7.40.0, 7.40.1, 7.41.0, 7.42.0, 7.43.0 and 7.44.0.	<p>New blood products were added to VBECS.</p> <p>For a full list of new product codes for COVID-19 treatment, see Table 2: New Blood Products for COVID-19 Treatment.</p> <p>For all other blood products added by ICCBBA that are not related to COVID-19 treatment see Table 3: Other Blood Products Not Related to COVID-19 Treatment.</p> <p>The list of all possible modifications for new blood products can be found on VBECS SharePoint Site.</p>	<p>Validate only blood products that you may receive from your supplier. Use Tools, Blood Products to associate the blood products with an active facility.</p>					
2	Blood Unit Modification – Thaw/Pool	Thaw/Pool modification does not work for certain product codes.	<p>VBECS will now have valid target products for Thaw/Pool modification.</p> <p>The list of all product codes affected by this change can be found on VBECS SharePoint Site.</p>	<p>Validate only if you were affected by this defect.</p> <p>Perform Thaw/Pool modification on two units of product E3571. Verify that VBECS offers target product for modification and that it can be successfully completed.</p>					

Table 2: New Blood Products for COVID-19 Treatment

Component	Product Code	Modifiable	Product Type	Long Name	Short Name	Maximum Storage Hours
FRESH FROZEN PLASMA	E9887	No	IMMUNE PLASMA	IMMUNE PLASMA CPD/XX/<=-18C For mnf:injectable SARS-CoV-2	PLASMA Imm CPD MNFI SARS-CoV-2	8760
FRESH FROZEN PLASMA	E9888	No	IMMUNE PLASMA	IMMUNE PLASMA CPDA-1/XX/<=-18C For mnf:injectable SARS-CoV-2	PLASMA Imm CPDA-1 MNFI SARS-CoV-2	8760
FRESH FROZEN PLASMA	E9890	Yes	Apheresis POOLED CONVALESCENT PLASMA	Apheresis POOLED CONVALESCENT PLASMA ACD-A/XX/<=-25C Psoralen-treated From 2 donors COVID-19	PLASMA Conv AFR Pool ACD-A Psoraln 2DNR COVID-19	8760
FRESH FROZEN PLASMA	E9891	Yes	Apheresis POOLED CONVALESCENT PLASMA	Apheresis POOLED CONVALESCENT PLASMA ACD-A/XX/<=-25C Psoralen-treated From 3 donors COVID-19	PLASMA Conv AFR Pool ACD-A Psoraln 3DNR COVID-19	8760
FRESH FROZEN PLASMA	E9892	Yes	Apheresis CONVALESCENT PLASMA	Apheresis CONVALESCENT PLASMA CPD-50/XX/<=-25C ResLeu:<1E6 COVID-19	PLASMA AFR Conv CPD-50 LUKOPR COVID-19	8760
FRESH FROZEN PLASMA	E9893	Yes	Thawed Apheresis CONVALESCENT PLASMA	Thawed Apheresis CONVALESCENT PLASMA CPD-50/XX/refg ResLeu:<1E6 COVID-19	PLASMA Conv AFR Thaw CPD-50 LUKOPR COVID-19	120
FRESH FROZEN PLASMA	E9894	Yes	Apheresis CONVALESCENT PLASMA	Apheresis CONVALESCENT PLASMA CPD-50/XX/<=-25C ResLeu:<1E6 Psoralen-treated COVID-19	PLASMA AFR Conv CPD-50 LUKOPR Psoraln COVID-19	8760
FRESH FROZEN PLASMA	E9895	Yes	Thawed Apheresis CONVALESCENT PLASMA	Thawed Apheresis CONVALESCENT PLASMA CPD-50/XX/refg ResLeu:<1E6 Psoralen-treated COVID-19	PLASMA Conv AFR Thaw CPD-50 LUKOPR Psoraln COVID-19	120
FRESH FROZEN PLASMA	E9896	Yes	CONVALESCENT PLASMA	CONVALESCENT PLASMA CPD/XX/<=-25C ResLeu:<1E6 COVID-19	PLASMA Conv CPD LUKOPR COVID-19	8760
FRESH FROZEN PLASMA	E9897	Yes	Thawed CONVALESCENT PLASMA	Thawed CONVALESCENT PLASMA CPD/XX/refg ResLeu:<1E6 COVID-19	PLASMA Conv Thaw CPD LUKOPR COVID-19	120
FRESH FROZEN PLASMA	E9898	Yes	Apheresis CONVALESCENT PLASMA	Apheresis CONVALESCENT PLASMA NaCitrate/XX/<=-25C ResLeu:<1E6 Psoralen-treated COVID-19	PLASMA AFR Conv NaCit LUKOPR Psoraln COVID-19	8760
FRESH FROZEN PLASMA	E9899	Yes	Thawed Apheresis CONVALESCENT PLASMA	Thawed Apheresis CONVALESCENT PLASMA NaCitrate/XX/refg ResLeu:<1E6 Psoralen-treated COVID-19	PLASMA Conv AFR Thaw NaCit LUKOPR Psoraln COVID-19	120
FRESH FROZEN PLASMA	E9904	Yes	Thawed Apheresis CONVALESCENT PLASMA	Thawed Apheresis CONVALESCENT PLASMA NaCitrate/XX/refg COVID-19	PLASMA Conv AFR Thaw NaCit COVID-19	120
FRESH FROZEN PLASMA	E9905	No	Liquid CONVALESCENT PLASMA	Liquid CONVALESCENT PLASMA NS/XX/refg Not for tx or mnf COVID-19	PLASMA Conv Liq NS NMT COVID-19	624
FRESH FROZEN PLASMA	E9906	No	CONVALESCENT PLASMA	CONVALESCENT PLASMA NS/XX/<=-18C Not for tx or mnf COVID-19	PLASMA Conv NS NMT COVID-19	8760
FRESH FROZEN PLASMA	E9934	Yes	Apheresis CONVALESCENT PLASMA	Apheresis CONVALESCENT PLASMA ACD-A/XX/<=-25C 1st container COVID-19	PLASMA AFR Conv ACD-A 1C COVID-19	8760
FRESH FROZEN PLASMA	E9935	Yes	Apheresis CONVALESCENT PLASMA	Apheresis CONVALESCENT PLASMA ACD-A/XX/<=-25C 2nd container COVID-19	PLASMA AFR Conv ACD-A 2C COVID-19	8760
FRESH FROZEN PLASMA	E9936	Yes	Apheresis CONVALESCENT PLASMA	Apheresis CONVALESCENT PLASMA ACD-A/XX/<=-25C 3rd container COVID-19	PLASMA AFR Conv ACD-A 3C COVID-19	8760
FRESH FROZEN PLASMA	EA160	Yes	Apheresis CONVALESCENT PLASMA	Apheresis CONVALESCENT PLASMA ACD-A/XX/<=-18C COVID-19 high titer	PLASMA AFR Conv ACD-A COVID-19 high titer	8760
FRESH FROZEN PLASMA	EA161	Yes	Apheresis CONVALESCENT PLASMA	Apheresis CONVALESCENT PLASMA ACD-A/XX/<=-18C COVID-19 low titer	PLASMA AFR Conv ACD-A COVID-19 low titer	8760
FRESH FROZEN PLASMA	EA162	Yes	Thawed Apheresis CONVALESCENT PLASMA	Thawed Apheresis CONVALESCENT PLASMA ACD-A/XX/refg COVID-19 high titer	PLASMA Conv AFR Thaw ACD-A COVID-19 high titer	120

Component	Product Code	Modifiable	Product Type	Long Name	Short Name	Maximum Storage Hours
FRESH FROZEN PLASMA	EA163	Yes	Thawed Apheresis CONVALESCENT PLASMA	Thawed Apheresis CONVALESCENT PLASMA ACD-A/XX/refg COVID-19 low titer	PLASMA Conv AFR Thaw ACD-A COVID-19 low titer	120
FRESH FROZEN PLASMA	EA164	Yes	Apheresis CONVALESCENT PLASMA	Apheresis CONVALESCENT PLASMA ACD-A/XX/<--18C Irradiated COVID-19 high titer	PLASMA AFR Conv ACD-A IRD COVID-19 high titer	8760
FRESH FROZEN PLASMA	EA165	Yes	Apheresis CONVALESCENT PLASMA	Apheresis CONVALESCENT PLASMA ACD-A/XX/<--18C Irradiated COVID-19 low titer	PLASMA AFR Conv ACD-A IRD COVID-19 low titer	8760
FRESH FROZEN PLASMA	EA166	Yes	Apheresis CONVALESCENT PLASMA	Apheresis CONVALESCENT PLASMA ACD-A/XX/<--18C 1st container COVID-19 high titer	PLASMA AFR Conv ACD-A 1C COVID-19 high titer	8760
FRESH FROZEN PLASMA	EA167	Yes	Apheresis CONVALESCENT PLASMA	Apheresis CONVALESCENT PLASMA ACD-A/XX/<--18C 1st container COVID-19 low titer	PLASMA AFR Conv ACD-A 1C COVID-19 low titer	8760
FRESH FROZEN PLASMA	EA168	Yes	Apheresis CONVALESCENT PLASMA	Apheresis CONVALESCENT PLASMA ACD-A/XX/<--18C 2nd container COVID-19 high titer	PLASMA AFR Conv ACD-A 2C COVID-19 high titer	8760
FRESH FROZEN PLASMA	EA169	Yes	Apheresis CONVALESCENT PLASMA	Apheresis CONVALESCENT PLASMA ACD-A/XX/<--18C 2nd container COVID-19 low titer	PLASMA AFR Conv ACD-A 2C COVID-19 low titer	8760
FRESH FROZEN PLASMA	EA170	Yes	Apheresis CONVALESCENT PLASMA	Apheresis CONVALESCENT PLASMA ACD-A/XX/<--18C 3rd container COVID-19 high titer	PLASMA AFR Conv ACD-A 3C COVID-19 high titer	8760
FRESH FROZEN PLASMA	EA171	Yes	Apheresis CONVALESCENT PLASMA	Apheresis CONVALESCENT PLASMA ACD-A/XX/<--18C 3rd container COVID-19 low titer	PLASMA AFR Conv ACD-A 3C COVID-19 low titer	8760
FRESH FROZEN PLASMA	EA172	Yes	Apheresis CONVALESCENT PLASMA	Apheresis CONVALESCENT PLASMA ACD-A/XX/<--18C 4th container COVID-19 high titer	PLASMA AFR Conv ACD-A 4C COVID-19 high titer	8760
FRESH FROZEN PLASMA	EA173	Yes	Apheresis CONVALESCENT PLASMA	Apheresis CONVALESCENT PLASMA ACD-A/XX/<--18C 4th container COVID-19 low titer	PLASMA AFR Conv ACD-A 4C COVID-19 low titer	8760
FRESH FROZEN PLASMA	EA174	Yes	Liquid Apheresis CONVALESCENT PLASMA	Liquid Apheresis CONVALESCENT PLASMA NS/XX/refg 1st container COVID-19 high titer	PLASMA Conv AFR Liq NS 1C COVID-19 high titer	120
FRESH FROZEN PLASMA	EA175	Yes	Liquid Apheresis CONVALESCENT PLASMA	Liquid Apheresis CONVALESCENT PLASMA NS/XX/refg 1st container COVID-19 low titer	PLASMA Conv AFR Liq NS 1C COVID-19 low titer	120
FRESH FROZEN PLASMA	EA176	Yes	Liquid Apheresis CONVALESCENT PLASMA	Liquid Apheresis CONVALESCENT PLASMA NS/XX/refg 2nd container COVID-19 high titer	PLASMA Conv AFR Liq NS 2C COVID-19 high titer	120
FRESH FROZEN PLASMA	EA177	Yes	Liquid Apheresis CONVALESCENT PLASMA	Liquid Apheresis CONVALESCENT PLASMA NS/XX/refg 2nd container COVID-19 low titer	PLASMA Conv AFR Liq NS 2C COVID-19 low titer	120
FRESH FROZEN PLASMA	EA178	Yes	Liquid Apheresis CONVALESCENT PLASMA	Liquid Apheresis CONVALESCENT PLASMA NS/XX/refg 3rd container COVID-19 high titer	PLASMA Conv AFR Liq NS 3C COVID-19 high titer	120
FRESH FROZEN PLASMA	EA179	Yes	Liquid Apheresis CONVALESCENT PLASMA	Liquid Apheresis CONVALESCENT PLASMA NS/XX/refg 3rd container COVID-19 low titer	PLASMA Conv AFR Liq NS 3C COVID-19 low titer	120
FRESH FROZEN PLASMA	EA180	Yes	Liquid Apheresis CONVALESCENT PLASMA	Liquid Apheresis CONVALESCENT PLASMA NS/XX/refg 4th container COVID-19 high titer	PLASMA Conv AFR Liq NS 4C COVID-19 high titer	120
FRESH FROZEN PLASMA	EA181	Yes	Liquid Apheresis CONVALESCENT PLASMA	Liquid Apheresis CONVALESCENT PLASMA NS/XX/refg 4th container COVID-19 low titer	PLASMA Conv AFR Liq NS 4C COVID-19 low titer	120
FRESH FROZEN PLASMA	EA182	Yes	Thawed Apheresis CONVALESCENT PLASMA	Thawed Apheresis CONVALESCENT PLASMA ACD-A/XX/refg 1st container COVID-19 high titer	PLASMA Conv AFR Thaw ACD-A 1C COVID-19 high titer	120
FRESH FROZEN PLASMA	EA183	Yes	Thawed Apheresis CONVALESCENT PLASMA	Thawed Apheresis CONVALESCENT PLASMA ACD-A/XX/refg 1st container COVID-19 low titer	PLASMA Conv AFR Thaw ACD-A 1C COVID-19 low titer	120
FRESH FROZEN PLASMA	EA184	Yes	Thawed Apheresis CONVALESCENT PLASMA	Thawed Apheresis CONVALESCENT PLASMA ACD-A/XX/refg 2nd container COVID-19 high titer	PLASMA Conv AFR Thaw ACD-A 2C COVID-19 high titer	120

Component	Product Code	Modifiable	Product Type	Long Name	Short Name	Maximum Storage Hours
FRESH FROZEN PLASMA	EA185	Yes	Thawed Apheresis CONVALESCENT PLASMA	Thawed Apheresis CONVALESCENT PLASMA ACD-A/XX/refg 2nd container COVID-19 low titer	PLASMA Conv AFR Thaw ACD-A 2C COVID-19 low titer	120
FRESH FROZEN PLASMA	EA186	Yes	Thawed Apheresis CONVALESCENT PLASMA	Thawed Apheresis CONVALESCENT PLASMA ACD-A/XX/refg 3rd container COVID-19 high titer	PLASMA Conv AFR Thaw ACD-A 3C COVID-19 high titer	120
FRESH FROZEN PLASMA	EA187	Yes	Thawed Apheresis CONVALESCENT PLASMA	Thawed Apheresis CONVALESCENT PLASMA ACD-A/XX/refg 3rd container COVID-19 low titer	PLASMA Conv AFR Thaw ACD-A 3C COVID-19 low titer	120
FRESH FROZEN PLASMA	EA188	Yes	Thawed Apheresis CONVALESCENT PLASMA	Thawed Apheresis CONVALESCENT PLASMA ACD-A/XX/refg 4th container COVID-19 high titer	PLASMA Conv AFR Thaw ACD-A 4C COVID-19 high titer	120
FRESH FROZEN PLASMA	EA189	Yes	Thawed Apheresis CONVALESCENT PLASMA	Thawed Apheresis CONVALESCENT PLASMA ACD-A/XX/refg 4th container COVID-19 low titer	PLASMA Conv AFR Thaw ACD-A 4C COVID-19 low titer	120
FRESH FROZEN PLASMA	EA190	Yes	Apheresis CONVALESCENT PLASMA	Apheresis CONVALESCENT PLASMA NS/XX/<=-18C COVID-19 high titer	PLASMA AFR Conv NS COVID-19 high titer	8760
FRESH FROZEN PLASMA	EA191	Yes	Apheresis CONVALESCENT PLASMA	Apheresis CONVALESCENT PLASMA NS/XX/<=-18C COVID-19 low titer	PLASMA AFR Conv NS COVID-19 low titer	8760
FRESH FROZEN PLASMA	EA192	Yes	Apheresis CONVALESCENT PLASMA	Apheresis CONVALESCENT PLASMA NS/XX/<=-18C Methylene blue-treated COVID-19 high titer	PLASMA AFR Conv NS Methyl Blue COVID-19 high titer	8760
FRESH FROZEN PLASMA	EA193	Yes	Apheresis CONVALESCENT PLASMA	Apheresis CONVALESCENT PLASMA NS/XX/<=-18C Methylene blue-treated COVID-19 low titer	PLASMA AFR Conv NS Methyl Blue COVID-19 low titer	8760
FRESH FROZEN PLASMA	EA194	Yes	Apheresis CONVALESCENT PLASMA	Apheresis CONVALESCENT PLASMA NS/XX/<=-18C Psoralen-treated COVID-19 high titer	PLASMA AFR Conv NS Psoraln COVID-19 high titer	8760
FRESH FROZEN PLASMA	EA195	Yes	Apheresis CONVALESCENT PLASMA	Apheresis CONVALESCENT PLASMA NS/XX/<=-18C Psoralen-treated COVID-19 low titer	PLASMA AFR Conv NS Psoraln COVID-19 low titer	8760
FRESH FROZEN PLASMA	EA196	Yes	Apheresis CONVALESCENT PLASMA	Apheresis CONVALESCENT PLASMA NS/XX/<=-18C Riboflavin-treated COVID-19 high titer	PLASMA AFR Conv NS Ribo COVID-19 high titer	8760
FRESH FROZEN PLASMA	EA197	Yes	Apheresis CONVALESCENT PLASMA	Apheresis CONVALESCENT PLASMA NS/XX/<=-18C Riboflavin-treated COVID-19 low titer	PLASMA AFR Conv NS Ribo COVID-19 low titer	8760
FRESH FROZEN PLASMA	EA198	Yes	Apheresis CONVALESCENT PLASMA	Apheresis CONVALESCENT PLASMA ACD-A/XX/<=-18C Methylene blue-treated COVID-19 high titer	PLASMA AFR Conv ACD-A Methyl Blue COVID-19 high titer	8760
FRESH FROZEN PLASMA	EA199	Yes	Apheresis CONVALESCENT PLASMA	Apheresis CONVALESCENT PLASMA ACD-A/XX/<=-18C Methylene blue-treated COVID-19 low titer	PLASMA AFR Conv ACD-A Methyl Blue COVID-19 low titer	8760
FRESH FROZEN PLASMA	EA200	Yes	Apheresis CONVALESCENT PLASMA	Apheresis CONVALESCENT PLASMA ACD-A/XX/<=-18C Psoralen-treated COVID-19 high titer	PLASMA AFR Conv ACD-A Psoraln COVID-19 high titer	8760
FRESH FROZEN PLASMA	EA201	Yes	Apheresis CONVALESCENT PLASMA	Apheresis CONVALESCENT PLASMA ACD-A/XX/<=-18C Psoralen-treated COVID-19 low titer	PLASMA AFR Conv ACD-A Psoraln COVID-19 low titer	8760
FRESH FROZEN PLASMA	EA202	Yes	Apheresis CONVALESCENT PLASMA	Apheresis CONVALESCENT PLASMA ACD-A/XX/<=-18C Riboflavin-treated COVID-19 high titer	PLASMA AFR Conv ACD-A Ribo COVID-19 high titer	8760
FRESH FROZEN PLASMA	EA203	Yes	Apheresis CONVALESCENT PLASMA	Apheresis CONVALESCENT PLASMA ACD-A/XX/<=-18C Riboflavin-treated COVID-19 low titer	PLASMA AFR Conv ACD-A Ribo COVID-19 low titer	8760
FRESH FROZEN PLASMA	EA204	Yes	Liquid Apheresis CONVALESCENT PLASMA	Liquid Apheresis CONVALESCENT PLASMA ACD-A/XX/refg COVID-19 high titer	PLASMA Conv AFR Liq ACD-A COVID-19 high titer	120
FRESH FROZEN PLASMA	EA205	Yes	Liquid Apheresis CONVALESCENT PLASMA	Liquid Apheresis CONVALESCENT PLASMA ACD-A/XX/refg COVID-19 low titer	PLASMA Conv AFR Liq ACD-A COVID-19 low titer	120
FRESH FROZEN PLASMA	EA206	Yes	Liquid Apheresis CONVALESCENT PLASMA	Liquid Apheresis CONVALESCENT PLASMA ACD-A/XX/refg Methylene blue-treated COVID-19 high titer	PLASMA Conv AFR Liq ACD-A Methyl Blue COVID-19 high titer	120

Component	Product Code	Modifiable	Product Type	Long Name	Short Name	Maximum Storage Hours
FRESH FROZEN PLASMA	EA207	Yes	Liquid Apheresis CONVALESCENT PLASMA	Liquid Apheresis CONVALESCENT PLASMA ACD-A/XX/refg Methylene blue-treated COVID-19 low titer	PLASMA Conv AFR Liq ACD-A Methyl Blue COVID-19 low titer	120
FRESH FROZEN PLASMA	EA208	Yes	Liquid Apheresis CONVALESCENT PLASMA	Liquid Apheresis CONVALESCENT PLASMA ACD-A/XX/refg Psoralen-treated COVID-19 high titer	PLASMA Conv AFR Liq ACD-A Psoraln COVID-19 high titer	120
FRESH FROZEN PLASMA	EA209	Yes	Liquid Apheresis CONVALESCENT PLASMA	Liquid Apheresis CONVALESCENT PLASMA ACD-A/XX/refg Psoralen-treated COVID-19 low titer	PLASMA Conv AFR Liq ACD-A Psoraln COVID-19 low titer	120
FRESH FROZEN PLASMA	EA210	Yes	Liquid Apheresis CONVALESCENT PLASMA	Liquid Apheresis CONVALESCENT PLASMA ACD-A/XX/refg Riboflavin-treated COVID-19 high titer	PLASMA Conv AFR Liq ACD-A Ribo COVID-19 high titer	120
FRESH FROZEN PLASMA	EA211	Yes	Liquid Apheresis CONVALESCENT PLASMA	Liquid Apheresis CONVALESCENT PLASMA ACD-A/XX/refg Riboflavin-treated COVID-19 low titer	PLASMA Conv AFR Liq ACD-A Ribo COVID-19 low titer	120
FRESH FROZEN PLASMA	EA212	Yes	Liquid Apheresis CONVALESCENT PLASMA	Liquid Apheresis CONVALESCENT PLASMA NS/XX/refg Methylene blue-treated COVID-19 high titer	PLASMA Conv AFR Liq NS Methyl Blue COVID-19 high titer	120
FRESH FROZEN PLASMA	EA213	Yes	Liquid Apheresis CONVALESCENT PLASMA	Liquid Apheresis CONVALESCENT PLASMA NS/XX/refg Methylene blue-treated COVID-19 low titer	PLASMA Conv AFR Liq NS Methyl Blue COVID-19 low titer	120
FRESH FROZEN PLASMA	EA214	Yes	Liquid Apheresis CONVALESCENT PLASMA	Liquid Apheresis CONVALESCENT PLASMA NS/XX/refg Psoralen-treated COVID-19 high titer	PLASMA Conv AFR Liq NS Psoraln COVID-19 high titer	120
FRESH FROZEN PLASMA	EA215	Yes	Liquid Apheresis CONVALESCENT PLASMA	Liquid Apheresis CONVALESCENT PLASMA NS/XX/refg Psoralen-treated COVID-19 low titer	PLASMA Conv AFR Liq NS Psoraln COVID-19 low titer	120
FRESH FROZEN PLASMA	EA216	Yes	Liquid Apheresis CONVALESCENT PLASMA	Liquid Apheresis CONVALESCENT PLASMA NS/XX/refg Riboflavin-treated COVID-19 high titer	PLASMA Conv AFR Liq NS Ribo COVID-19 high titer	120
FRESH FROZEN PLASMA	EA217	Yes	Liquid Apheresis CONVALESCENT PLASMA	Liquid Apheresis CONVALESCENT PLASMA NS/XX/refg Riboflavin-treated COVID-19 low titer	PLASMA Conv AFR Liq NS Ribo COVID-19 low titer	120
FRESH FROZEN PLASMA	EA218	Yes	Thawed CONVALESCENT PLASMA	Thawed CONVALESCENT PLASMA CPD/XX/refg COVID-19 high titer	PLASMA Conv Thaw CPD COVID-19 high titer	120
FRESH FROZEN PLASMA	EA219	Yes	Thawed CONVALESCENT PLASMA	Thawed CONVALESCENT PLASMA CPD/XX/refg COVID-19 low titer	PLASMA Conv Thaw CPD COVID-19 low titer	120
FRESH FROZEN PLASMA	EA220	Yes	Thawed Apheresis CONVALESCENT PLASMA	Thawed Apheresis CONVALESCENT PLASMA CPD/XX/refg COVID-19 high titer	PLASMA Conv AFR Thaw CPD COVID-19 high titer	120
FRESH FROZEN PLASMA	EA221	Yes	Thawed Apheresis CONVALESCENT PLASMA	Thawed Apheresis CONVALESCENT PLASMA CPD/XX/refg COVID-19 low titer	PLASMA Conv AFR Thaw CPD COVID-19 low titer	120
FRESH FROZEN PLASMA	EA222	Yes	Thawed Apheresis CONVALESCENT PLASMA	Thawed Apheresis CONVALESCENT PLASMA NS/XX/refg COVID-19 high titer	PLASMA Conv AFR Thaw NS COVID-19 high titer	120
FRESH FROZEN PLASMA	EA223	Yes	Thawed Apheresis CONVALESCENT PLASMA	Thawed Apheresis CONVALESCENT PLASMA NS/XX/refg COVID-19 low titer	PLASMA Conv AFR Thaw NS COVID-19 low titer	120
FRESH FROZEN PLASMA	EA224	Yes	Thawed CONVALESCENT PLASMA	Thawed CONVALESCENT PLASMA NS/XX/refg COVID-19 high titer	PLASMA Conv Thaw NS COVID-19 high titer	120
FRESH FROZEN PLASMA	EA225	Yes	Thawed CONVALESCENT PLASMA	Thawed CONVALESCENT PLASMA NS/XX/refg COVID-19 low titer	PLASMA Conv Thaw NS COVID-19 low titer	120
FRESH FROZEN PLASMA	EA226	Yes	Apheresis CONVALESCENT PLASMA	Apheresis CONVALESCENT PLASMA ACD-A/XX/<=-18C 1st container Psoralen-treated COVID-19 high titer	PLASMA AFR Conv ACD-A 1C Psoraln COVID-19 high titer	8760
FRESH FROZEN PLASMA	EA227	Yes	Apheresis CONVALESCENT PLASMA	Apheresis CONVALESCENT PLASMA ACD-A/XX/<=-18C 1st container Psoralen-treated COVID-19 low titer	PLASMA AFR Conv ACD-A 1C Psoraln COVID-19 low titer	8760
FRESH FROZEN PLASMA	EA228	Yes	Apheresis CONVALESCENT PLASMA	Apheresis CONVALESCENT PLASMA ACD-A/XX/<=-18C 2nd container Psoralen-treated COVID-19 high titer	PLASMA AFR Conv ACD-A 2C Psoraln COVID-19 high titer	8760

Component	Product Code	Modifiable	Product Type	Long Name	Short Name	Maximum Storage Hours
FRESH FROZEN PLASMA	EA229	Yes	Apheresis CONVALESCENT PLASMA	Apheresis CONVALESCENT PLASMA ACD-A/XX/<=-18C 2nd container Psoralen-treated COVID-19 low titer	PLASMA AFR Conv ACD-A 2C Psoraln COVID-19 low titer	8760
FRESH FROZEN PLASMA	EA230	Yes	Apheresis CONVALESCENT PLASMA	Apheresis CONVALESCENT PLASMA ACD-A/XX/<=-18C 3rd container Psoralen-treated COVID-19 high titer	PLASMA AFR Conv ACD-A 3C Psoraln COVID-19 high titer	8760
FRESH FROZEN PLASMA	EA231	Yes	Apheresis CONVALESCENT PLASMA	Apheresis CONVALESCENT PLASMA ACD-A/XX/<=-18C 3rd container Psoralen-treated COVID-19 low titer	PLASMA AFR Conv ACD-A 3C Psoraln COVID-19 low titer	8760
FRESH FROZEN PLASMA	EA232	Yes	Apheresis CONVALESCENT PLASMA	Apheresis CONVALESCENT PLASMA ACD-A/XX/<=-18C 4th container Psoralen-treated COVID-19 high titer	PLASMA AFR Conv ACD-A 4C Psoraln COVID-19 high titer	8760
FRESH FROZEN PLASMA	EA233	Yes	Apheresis CONVALESCENT PLASMA	Apheresis CONVALESCENT PLASMA ACD-A/XX/<=-18C 4th container Psoralen-treated COVID-19 low titer	PLASMA AFR Conv ACD-A 4C Psoraln COVID-19 low titer	8760
FRESH FROZEN PLASMA	EA234	Yes	Thawed Apheresis CONVALESCENT PLASMA	Thawed Apheresis CONVALESCENT PLASMA ACD-A/XX/refg Psoralen-treated COVID-19 high titer	PLASMA Conv AFR Thaw ACD-A Psoraln COVID-19 high titer	120
FRESH FROZEN PLASMA	EA235	Yes	Thawed Apheresis CONVALESCENT PLASMA	Thawed Apheresis CONVALESCENT PLASMA ACD-A/XX/refg Psoralen-treated COVID-19 low titer	PLASMA Conv AFR Thaw ACD-A Psoraln COVID-19 low titer	120
FRESH FROZEN PLASMA	EA236	Yes	Thawed Apheresis CONVALESCENT PLASMA	Thawed Apheresis CONVALESCENT PLASMA ACD-A/XX/refg 1st container Psoralen-treated COVID-19 high titer	PLASMA Conv AFR Thaw ACD-A 1C Psoraln COVID-19 high titer	120
FRESH FROZEN PLASMA	EA237	Yes	Thawed Apheresis CONVALESCENT PLASMA	Thawed Apheresis CONVALESCENT PLASMA ACD-A/XX/refg 1st container Psoralen-treated COVID-19 low titer	PLASMA Conv AFR Thaw ACD-A 1C Psoraln COVID-19 low titer	120
FRESH FROZEN PLASMA	EA238	Yes	Thawed Apheresis CONVALESCENT PLASMA	Thawed Apheresis CONVALESCENT PLASMA ACD-A/XX/refg 2nd container Psoralen-treated COVID-19 high titer	PLASMA Conv AFR Thaw ACD-A 2C Psoraln COVID-19 high titer	120
FRESH FROZEN PLASMA	EA239	Yes	Thawed Apheresis CONVALESCENT PLASMA	Thawed Apheresis CONVALESCENT PLASMA ACD-A/XX/refg 2nd container Psoralen-treated COVID-19 low titer	PLASMA Conv AFR Thaw ACD-A 2C Psoraln COVID-19 low titer	120
FRESH FROZEN PLASMA	EA240	Yes	Thawed Apheresis CONVALESCENT PLASMA	Thawed Apheresis CONVALESCENT PLASMA ACD-A/XX/refg 3rd container Psoralen-treated COVID-19 high titer	PLASMA Conv AFR Thaw ACD-A 3C Psoraln COVID-19 high titer	120
FRESH FROZEN PLASMA	EA241	Yes	Thawed Apheresis CONVALESCENT PLASMA	Thawed Apheresis CONVALESCENT PLASMA ACD-A/XX/refg 3rd container Psoralen-treated COVID-19 low titer	PLASMA Conv AFR Thaw ACD-A 3C Psoraln COVID-19 low titer	120
FRESH FROZEN PLASMA	EA242	Yes	Thawed Apheresis CONVALESCENT PLASMA	Thawed Apheresis CONVALESCENT PLASMA ACD-A/XX/refg 4th container Psoralen-treated COVID-19 high titer	PLASMA Conv AFR Thaw ACD-A 4C Psoraln COVID-19 high titer	120
FRESH FROZEN PLASMA	EA243	Yes	Thawed Apheresis CONVALESCENT PLASMA	Thawed Apheresis CONVALESCENT PLASMA ACD-A/XX/refg 4th container Psoralen-treated COVID-19 low titer	PLASMA Conv AFR Thaw ACD-A 4C Psoraln COVID-19 low titer	120
FRESH FROZEN PLASMA	EA244	Yes	Thawed Apheresis CONVALESCENT PLASMA	Thawed Apheresis CONVALESCENT PLASMA ACD-A/XX/refg Irradiated COVID-19 high titer	PLASMA Conv AFR Thaw ACD-A IRD COVID-19 high titer	120
FRESH FROZEN PLASMA	EA245	Yes	Thawed Apheresis CONVALESCENT PLASMA	Thawed Apheresis CONVALESCENT PLASMA ACD-A/XX/refg Irradiated COVID-19 low titer	PLASMA Conv AFR Thaw ACD-A IRD COVID-19 low titer	120
FRESH FROZEN PLASMA	EA246	Yes	Liquid CONVALESCENT PLASMA	Liquid CONVALESCENT PLASMA NS/XX/refg Irradiated COVID-19 high titer	PLASMA Conv Liq NS IRD COVID-19 high titer	624
FRESH FROZEN PLASMA	EA247	Yes	Liquid CONVALESCENT PLASMA	Liquid CONVALESCENT PLASMA NS/XX/refg Irradiated COVID-19 low titer	PLASMA Conv Liq NS IRD COVID-19 low titer	624
FRESH FROZEN PLASMA	EA248	Yes	Liquid Apheresis CONVALESCENT PLASMA	Liquid Apheresis CONVALESCENT PLASMA NS/XX/refg Irradiated COVID-19 high titer	PLASMA Conv AFR Liq NS IRD COVID-19 high titer	120
FRESH FROZEN PLASMA	EA249	Yes	Liquid Apheresis CONVALESCENT PLASMA	Liquid Apheresis CONVALESCENT PLASMA NS/XX/refg Irradiated COVID-19 low titer	PLASMA Conv AFR Liq NS IRD COVID-19 low titer	120
FRESH FROZEN PLASMA	EA250	Yes	Liquid Apheresis CONVALESCENT PLASMA	Liquid Apheresis CONVALESCENT PLASMA ACD-A/XX/refg Irradiated COVID-19 high titer	PLASMA Conv AFR Liq ACD-A IRD COVID-19 high titer	120

Component	Product Code	Modifiable	Product Type	Long Name	Short Name	Maximum Storage Hours
FRESH FROZEN PLASMA	EA251	Yes	Liquid Apheresis CONVALESCENT PLASMA	Liquid Apheresis CONVALESCENT PLASMA ACD-A/XX/refg Irradiated COVID-19 low titer	PLASMA Conv AFR Liq ACD-A IRD COVID-19 low titer	120
FRESH FROZEN PLASMA	EA252	Yes	Liquid CONVALESCENT PLASMA	Liquid CONVALESCENT PLASMA CPD/XX/refg Irradiated COVID-19 high titer	PLASMA Conv Liq CPD IRD COVID-19 high titer	624
FRESH FROZEN PLASMA	EA253	Yes	Liquid CONVALESCENT PLASMA	Liquid CONVALESCENT PLASMA CPD/XX/refg Irradiated COVID-19 low titer	PLASMA Conv Liq CPD IRD COVID-19 low titer	624
FRESH FROZEN PLASMA	EA254	Yes	Liquid Apheresis CONVALESCENT PLASMA	Liquid Apheresis CONVALESCENT PLASMA CPD/XX/refg Irradiated COVID-19 high titer	PLASMA Conv AFR Liq CPD IRD COVID-19 high titer	120
FRESH FROZEN PLASMA	EA255	Yes	Liquid Apheresis CONVALESCENT PLASMA	Liquid Apheresis CONVALESCENT PLASMA CPD/XX/refg Irradiated COVID-19 low titer	PLASMA Conv AFR Liq CPD IRD COVID-19 low titer	120
FRESH FROZEN PLASMA	EA256	Yes	CONVALESCENT PLASMA	CONVALESCENT PLASMA CPD/XX/<=-18C Irradiated COVID-19 high titer	PLASMA Conv CPD IRD COVID-19 high titer	8760
FRESH FROZEN PLASMA	EA257	Yes	CONVALESCENT PLASMA	CONVALESCENT PLASMA CPD/XX/<=-18C Irradiated COVID-19 low titer	PLASMA Conv CPD IRD COVID-19 low titer	8760
FRESH FROZEN PLASMA	EA258	Yes	CONVALESCENT PLASMA	CONVALESCENT PLASMA CP2D/XX/<=-18C COVID-19 high titer	PLASMA Conv CP2D COVID-19 high titer	8760
FRESH FROZEN PLASMA	EA259	Yes	CONVALESCENT PLASMA	CONVALESCENT PLASMA CP2D/XX/<=-18C COVID-19 low titer	PLASMA Conv CP2D COVID-19 low titer	8760
FRESH FROZEN PLASMA	EA260	Yes	Thawed CONVALESCENT PLASMA	Thawed CONVALESCENT PLASMA CP2D/XX/refg COVID-19 high titer	PLASMA Conv Thaw CP2D COVID-19 high titer	120
FRESH FROZEN PLASMA	EA261	Yes	Thawed CONVALESCENT PLASMA	Thawed CONVALESCENT PLASMA CP2D/XX/refg COVID-19 low titer	PLASMA Conv Thaw CP2D COVID-19 low titer	120
FRESH FROZEN PLASMA	EA262	Yes	CONVALESCENT PLASMA	CONVALESCENT PLASMA CPDA-1/XX/<=-18C COVID-19 high titer	PLASMA Conv CPDA-1 COVID-19 high titer	8760
FRESH FROZEN PLASMA	EA263	Yes	CONVALESCENT PLASMA	CONVALESCENT PLASMA CPDA-1/XX/<=-18C COVID-19 low titer	PLASMA Conv CPDA-1 COVID-19 low titer	8760
FRESH FROZEN PLASMA	EA264	Yes	CONVALESCENT PLASMA	CONVALESCENT PLASMA CPDA-1/XX/<=-18C Psoralen-treated COVID-19 high titer	PLASMA Conv CPDA-1 Psoraln COVID-19 high titer	8760
FRESH FROZEN PLASMA	EA265	Yes	CONVALESCENT PLASMA	CONVALESCENT PLASMA CPDA-1/XX/<=-18C Psoralen-treated COVID-19 low titer	PLASMA Conv CPDA-1 Psoraln COVID-19 low titer	8760
FRESH FROZEN PLASMA	EA266	Yes	Liquid Apheresis CONVALESCENT PLASMA	Liquid Apheresis CONVALESCENT PLASMA NS/XX/refg Irradiated 1st container COVID-19 high titer	PLASMA Conv AFR Liq NS IRD 1C COVID-19 high titer	120
FRESH FROZEN PLASMA	EA267	Yes	Liquid Apheresis CONVALESCENT PLASMA	Liquid Apheresis CONVALESCENT PLASMA NS/XX/refg Irradiated 1st container COVID-19 low titer	PLASMA Conv AFR Liq NS IRD 1C COVID-19 low titer	120
FRESH FROZEN PLASMA	EA268	Yes	Liquid Apheresis CONVALESCENT PLASMA	Liquid Apheresis CONVALESCENT PLASMA NS/XX/refg Irradiated 2nd container COVID-19 high titer	PLASMA Conv AFR Liq NS IRD 2C COVID-19 high titer	120
FRESH FROZEN PLASMA	EA269	Yes	Liquid Apheresis CONVALESCENT PLASMA	Liquid Apheresis CONVALESCENT PLASMA NS/XX/refg Irradiated 2nd container COVID-19 low titer	PLASMA Conv AFR Liq NS IRD 2C COVID-19 low titer	120
FRESH FROZEN PLASMA	EA270	Yes	Liquid Apheresis CONVALESCENT PLASMA	Liquid Apheresis CONVALESCENT PLASMA NS/XX/refg Irradiated 3rd container COVID-19 high titer	PLASMA Conv AFR Liq NS IRD 3C COVID-19 high titer	120
FRESH FROZEN PLASMA	EA271	Yes	Liquid Apheresis CONVALESCENT PLASMA	Liquid Apheresis CONVALESCENT PLASMA NS/XX/refg Irradiated 3rd container COVID-19 low titer	PLASMA Conv AFR Liq NS IRD 3C COVID-19 low titer	120
FRESH FROZEN PLASMA	EA272	Yes	Liquid Apheresis CONVALESCENT PLASMA	Liquid Apheresis CONVALESCENT PLASMA NS/XX/refg Irradiated 4th container COVID-19 high titer	PLASMA Conv AFR Liq NS IRD 4C COVID-19 high titer	120

Component	Product Code	Modifiable	Product Type	Long Name	Short Name	Maximum Storage Hours
FRESH FROZEN PLASMA	EA273	Yes	Liquid Apheresis CONVALESCENT PLASMA	Liquid Apheresis CONVALESCENT PLASMA NS/XX/refg Irradiated 4th container COVID-19 low titer	PLASMA Conv AFR Liq NS IRD 4C COVID-19 low titer	120
FRESH FROZEN PLASMA	EA274	Yes	Liquid CONVALESCENT PLASMA	Liquid CONVALESCENT PLASMA CPDA-1/XX/refg COVID-19 high titer	PLASMA Conv Liq CPDA-1 COVID-19 high titer	624
FRESH FROZEN PLASMA	EA275	Yes	Liquid CONVALESCENT PLASMA	Liquid CONVALESCENT PLASMA CPDA-1/XX/refg COVID-19 low titer	PLASMA Conv Liq CPDA-1 COVID-19 low titer	624
FRESH FROZEN PLASMA	EA276	Yes	Thawed CONVALESCENT PLASMA	Thawed CONVALESCENT PLASMA CPDA-1/XX/refg COVID-19 high titer	PLASMA Conv Thaw CPDA-1 COVID-19 high titer	120
FRESH FROZEN PLASMA	EA277	Yes	Thawed CONVALESCENT PLASMA	Thawed CONVALESCENT PLASMA CPDA-1/XX/refg COVID-19 low titer	PLASMA Conv Thaw CPDA-1 COVID-19 low titer	120
FRESH FROZEN PLASMA	EA278	Yes	Thawed CONVALESCENT PLASMA	Thawed CONVALESCENT PLASMA CPD/XX/refg Irradiated COVID-19 high titer	PLASMA Conv Thaw CPD IRD COVID-19 high titer	120
FRESH FROZEN PLASMA	EA279	Yes	Thawed CONVALESCENT PLASMA	Thawed CONVALESCENT PLASMA CPD/XX/refg Irradiated COVID-19 low titer	PLASMA Conv Thaw CPD IRD COVID-19 low titer	120
FRESH FROZEN PLASMA	EA280	Yes	Apheresis CONVALESCENT PLASMA	Apheresis CONVALESCENT PLASMA ACD-A/XX/<=18C Irradiated 1st container COVID-19 high titer	PLASMA AFR Conv ACD-A IRD 1C COVID-19 high titer	8760
FRESH FROZEN PLASMA	EA281	Yes	Apheresis CONVALESCENT PLASMA	Apheresis CONVALESCENT PLASMA ACD-A/XX/<=18C Irradiated 1st container COVID-19 low titer	PLASMA AFR Conv ACD-A IRD 1C COVID-19 low titer	8760
FRESH FROZEN PLASMA	EA282	Yes	Apheresis CONVALESCENT PLASMA	Apheresis CONVALESCENT PLASMA ACD-A/XX/<=18C Irradiated 2nd container COVID-19 high titer	PLASMA AFR Conv ACD-A IRD 2C COVID-19 high titer	8760
FRESH FROZEN PLASMA	EA283	Yes	Apheresis CONVALESCENT PLASMA	Apheresis CONVALESCENT PLASMA ACD-A/XX/<=18C Irradiated 2nd container COVID-19 low titer	PLASMA AFR Conv ACD-A IRD 2C COVID-19 low titer	8760
FRESH FROZEN PLASMA	EA284	Yes	Apheresis CONVALESCENT PLASMA	Apheresis CONVALESCENT PLASMA ACD-A/XX/<=18C Irradiated 3rd container COVID-19 high titer	PLASMA AFR Conv ACD-A IRD 3C COVID-19 high titer	8760
FRESH FROZEN PLASMA	EA285	Yes	Apheresis CONVALESCENT PLASMA	Apheresis CONVALESCENT PLASMA ACD-A/XX/<=18C Irradiated 3rd container COVID-19 low titer	PLASMA AFR Conv ACD-A IRD 3C COVID-19 low titer	8760
FRESH FROZEN PLASMA	EA286	Yes	Apheresis CONVALESCENT PLASMA	Apheresis CONVALESCENT PLASMA ACD-A/XX/<=18C Irradiated 4th container COVID-19 high titer	PLASMA AFR Conv ACD-A IRD 4C COVID-19 high titer	8760
FRESH FROZEN PLASMA	EA287	Yes	Apheresis CONVALESCENT PLASMA	Apheresis CONVALESCENT PLASMA ACD-A/XX/<=18C Irradiated 4th container COVID-19 low titer	PLASMA AFR Conv ACD-A IRD 4C COVID-19 low titer	8760
FRESH FROZEN PLASMA	EA288	Yes	Thawed Apheresis CONVALESCENT PLASMA	Thawed Apheresis CONVALESCENT PLASMA ACD-A/XX/refg Irradiated 1st container COVID-19 high titer	PLASMA Conv AFR Thaw ACD-A IRD 1C COVID-19 high titer	120
FRESH FROZEN PLASMA	EA289	Yes	Thawed Apheresis CONVALESCENT PLASMA	Thawed Apheresis CONVALESCENT PLASMA ACD-A/XX/refg Irradiated 1st container COVID-19 low titer	PLASMA Conv AFR Thaw ACD-A IRD 1C COVID-19 low titer	120
FRESH FROZEN PLASMA	EA290	Yes	Thawed Apheresis CONVALESCENT PLASMA	Thawed Apheresis CONVALESCENT PLASMA ACD-A/XX/refg Irradiated 2nd container COVID-19 high titer	PLASMA Conv AFR Thaw ACD-A IRD 2C COVID-19 high titer	120
FRESH FROZEN PLASMA	EA291	Yes	Thawed Apheresis CONVALESCENT PLASMA	Thawed Apheresis CONVALESCENT PLASMA ACD-A/XX/refg Irradiated 2nd container COVID-19 low titer	PLASMA Conv AFR Thaw ACD-A IRD 2C COVID-19 low titer	120
FRESH FROZEN PLASMA	EA292	Yes	Thawed Apheresis CONVALESCENT PLASMA	Thawed Apheresis CONVALESCENT PLASMA ACD-A/XX/refg Irradiated 3rd container COVID-19 high titer	PLASMA Conv AFR Thaw ACD-A IRD 3C COVID-19 high titer	120
FRESH FROZEN PLASMA	EA293	Yes	Thawed Apheresis CONVALESCENT PLASMA	Thawed Apheresis CONVALESCENT PLASMA ACD-A/XX/refg Irradiated 3rd container COVID-19 low titer	PLASMA Conv AFR Thaw ACD-A IRD 3C COVID-19 low titer	120
FRESH FROZEN PLASMA	EA294	Yes	Thawed Apheresis CONVALESCENT PLASMA	Thawed Apheresis CONVALESCENT PLASMA ACD-A/XX/refg Irradiated 4th container COVID-19 high titer	PLASMA Conv AFR Thaw ACD-A IRD 4C COVID-19 high titer	120

Component	Product Code	Modifiable	Product Type	Long Name	Short Name	Maximum Storage Hours
FRESH FROZEN PLASMA	EA295	Yes	Thawed Apheresis CONVALESCENT PLASMA	Thawed Apheresis CONVALESCENT PLASMA ACD-A/XX/refg Irradiated 4th container COVID-19 low titer	PLASMA Conv AFR Thaw ACD-A IRD 4C COVID-19 low titer	120
FRESH FROZEN PLASMA	EA296	Yes	Apheresis CONVALESCENT PLASMA	Apheresis CONVALESCENT PLASMA ACD-A/XX/<=-18C 5th container COVID-19 high titer	PLASMA AFR Conv ACD-A 5C COVID-19 high titer	8760
FRESH FROZEN PLASMA	EA297	Yes	Apheresis CONVALESCENT PLASMA	Apheresis CONVALESCENT PLASMA ACD-A/XX/<=-18C 5th container COVID-19 low titer	PLASMA AFR Conv ACD-A 5C COVID-19 low titer	8760
FRESH FROZEN PLASMA	EA298	Yes	Thawed Apheresis CONVALESCENT PLASMA	Thawed Apheresis CONVALESCENT PLASMA ACD-A/XX/refg 5th container COVID-19 high titer	PLASMA Conv AFR Thaw ACD-A 5C COVID-19 high titer	120
FRESH FROZEN PLASMA	EA299	Yes	Thawed Apheresis CONVALESCENT PLASMA	Thawed Apheresis CONVALESCENT PLASMA ACD-A/XX/refg 5th container COVID-19 low titer	PLASMA Conv AFR Thaw ACD-A 5C COVID-19 low titer	120
FRESH FROZEN PLASMA	EA300	Yes	CONVALESCENT PLASMA	CONVALESCENT PLASMA CPD/450mL/<=-25C Methylene blue-treated COVID-19 high titer	PLASMA Conv CPD Methyl Blue COVID-19 high titer	8760
FRESH FROZEN PLASMA	EA301	Yes	CONVALESCENT PLASMA	CONVALESCENT PLASMA CPD/450mL/<=-25C Methylene blue-treated COVID-19 low titer	PLASMA Conv CPD Methyl Blue COVID-19 low titer	8760
FRESH FROZEN PLASMA	EA302	Yes	Thawed Apheresis CONVALESCENT PLASMA	Thawed Apheresis CONVALESCENT PLASMA NS/XX/refg Psoralen-treated COVID-19 high titer	PLASMA Conv AFR Thaw NS Psoraln COVID-19 high titer	120
FRESH FROZEN PLASMA	EA303	Yes	Thawed Apheresis CONVALESCENT PLASMA	Thawed Apheresis CONVALESCENT PLASMA NS/XX/refg Psoralen-treated COVID-19 low titer	PLASMA Conv AFR Thaw NS Psoraln COVID-19 low titer	120
FRESH FROZEN PLASMA	EA304	Yes	Thawed Apheresis CONVALESCENT PLASMA	Thawed Apheresis CONVALESCENT PLASMA NS/XX/refg Methylene blue-treated COVID-19 high titer	PLASMA Conv AFR Thaw NS Methyl Blue COVID-19 high titer	120
FRESH FROZEN PLASMA	EA305	Yes	Thawed Apheresis CONVALESCENT PLASMA	Thawed Apheresis CONVALESCENT PLASMA NS/XX/refg Methylene blue-treated COVID-19 low titer	PLASMA Conv AFR Thaw NS Methyl Blue COVID-19 low titer	120
FRESH FROZEN PLASMA	EA306	Yes	Thawed Apheresis CONVALESCENT PLASMA	Thawed Apheresis CONVALESCENT PLASMA NS/XX/refg Riboflavin-treated COVID-19 high titer	PLASMA Conv AFR Thaw NS Ribo COVID-19 high titer	120
FRESH FROZEN PLASMA	EA307	Yes	Thawed Apheresis CONVALESCENT PLASMA	Thawed Apheresis CONVALESCENT PLASMA NS/XX/refg Riboflavin-treated COVID-19 low titer	PLASMA Conv AFR Thaw NS Ribo COVID-19 low titer	120
FRESH FROZEN PLASMA	EA308	Yes	Thawed Apheresis CONVALESCENT PLASMA	Thawed Apheresis CONVALESCENT PLASMA ACD-A/XX/refg Riboflavin-treated COVID-19 high titer	PLASMA Conv AFR Thaw ACD-A Ribo COVID-19 high titer	120
FRESH FROZEN PLASMA	EA309	Yes	Thawed Apheresis CONVALESCENT PLASMA	Thawed Apheresis CONVALESCENT PLASMA ACD-A/XX/refg Riboflavin-treated COVID-19 low titer	PLASMA Conv AFR Thaw ACD-A Ribo COVID-19 low titer	120
FRESH FROZEN PLASMA	EA310	Yes	Thawed CONVALESCENT PLASMA	Thawed CONVALESCENT PLASMA CPDA-1/XX/refg Psoralen-treated COVID-19 high titer	PLASMA Conv Thaw CPDA-1 Psoraln COVID-19 high titer	120
FRESH FROZEN PLASMA	EA311	Yes	Thawed CONVALESCENT PLASMA	Thawed CONVALESCENT PLASMA CPDA-1/XX/refg Psoralen-treated COVID-19 low titer	PLASMA Conv Thaw CPDA-1 Psoraln COVID-19 low titer	120
FRESH FROZEN PLASMA	EA312	Yes	Thawed CONVALESCENT PLASMA	Thawed CONVALESCENT PLASMA CPD/XX/refg Methylene blue-treated COVID-19 high titer	PLASMA Conv Thaw CPD Methyl Blue COVID-19 high titer	120
FRESH FROZEN PLASMA	EA313	Yes	Thawed CONVALESCENT PLASMA	Thawed CONVALESCENT PLASMA CPD/XX/refg Methylene blue-treated COVID-19 low titer	PLASMA Conv Thaw CPD Methyl Blue COVID-19 low titer	120
FRESH FROZEN PLASMA	EA314	Yes	Thawed Apheresis CONVALESCENT PLASMA	Thawed Apheresis CONVALESCENT PLASMA NaCitrate/XX/refg Riboflavin-treated COVID-19 high titer	PLASMA Conv AFR Thaw NaCit Ribo COVID-19 high titer	120
FRESH FROZEN PLASMA	EA315	Yes	Thawed Apheresis CONVALESCENT PLASMA	Thawed Apheresis CONVALESCENT PLASMA NaCitrate/XX/refg Riboflavin-treated COVID-19 low titer	PLASMA Conv AFR Thaw NaCit Ribo COVID-19 low titer	120
FRESH FROZEN PLASMA	EA316	Yes	Thawed Apheresis CONVALESCENT PLASMA	Thawed Apheresis CONVALESCENT PLASMA NaCitrate/XX/refg Psoralen-treated COVID-19 high titer	PLASMA Conv AFR Thaw NaCit Psoraln COVID-19 high titer	120

Component	Product Code	Modifiable	Product Type	Long Name	Short Name	Maximum Storage Hours
FRESH FROZEN PLASMA	EA317	Yes	Thawed Apheresis CONVALESCENT PLASMA	Thawed Apheresis CONVALESCENT PLASMA NaCitrate/XX/refg Psoralen-treated COVID-19 low titer	PLASMA Conv AFR Thaw NaCit Psoraln COVID-19 low titer	120
FRESH FROZEN PLASMA	EA318	No	Apheresis CONVALESCENT PLASMA	Apheresis CONVALESCENT PLASMA ACD-A/XX/<=-18C Not for tx or mnf COVID-19 high titer	PLASMA AFR Conv ACD-A NMT COVID-19 high titer	8760
FRESH FROZEN PLASMA	EA319	No	Apheresis CONVALESCENT PLASMA	Apheresis CONVALESCENT PLASMA ACD-A/XX/<=-18C Not for tx or mnf COVID-19 low titer	PLASMA AFR Conv ACD-A NMT COVID-19 low titer	8760
FRESH FROZEN PLASMA	EA320	Yes	Thawed Apheresis CONVALESCENT PLASMA	Thawed Apheresis CONVALESCENT PLASMA ACD-A/XX/refg Open COVID-19 high titer	PLASMA Conv AFR Thaw ACD-A OPN COVID-19 high titer	24
FRESH FROZEN PLASMA	EA321	Yes	Thawed Apheresis CONVALESCENT PLASMA	Thawed Apheresis CONVALESCENT PLASMA ACD-A/XX/refg Open COVID-19 low titer	PLASMA Conv AFR Thaw ACD-A OPN COVID-19 low titer	24
FRESH FROZEN PLASMA	EA322	Yes	Thawed Apheresis CONVALESCENT PLASMA	Thawed Apheresis CONVALESCENT PLASMA ACD-A/XX/refg Open 1st container COVID-19 high titer	PLASMA Conv AFR Thaw ACD-A OPN 1C COVID-19 high titer	24
FRESH FROZEN PLASMA	EA323	Yes	Thawed Apheresis CONVALESCENT PLASMA	Thawed Apheresis CONVALESCENT PLASMA ACD-A/XX/refg Open 1st container COVID-19 low titer	PLASMA Conv AFR Thaw ACD-A OPN 1C COVID-19 low titer	24
FRESH FROZEN PLASMA	EA324	Yes	Thawed Apheresis CONVALESCENT PLASMA	Thawed Apheresis CONVALESCENT PLASMA ACD-A/XX/refg Open 2nd container COVID-19 high titer	PLASMA Conv AFR Thaw ACD-A OPN 2C COVID-19 high titer	24
FRESH FROZEN PLASMA	EA325	Yes	Thawed Apheresis CONVALESCENT PLASMA	Thawed Apheresis CONVALESCENT PLASMA ACD-A/XX/refg Open 2nd container COVID-19 low titer	PLASMA Conv AFR Thaw ACD-A OPN 2C COVID-19 low titer	24
FRESH FROZEN PLASMA	EA326	Yes	Thawed Apheresis CONVALESCENT PLASMA	Thawed Apheresis CONVALESCENT PLASMA ACD-A/XX/refg Open 3rd container COVID-19 high titer	PLASMA Conv AFR Thaw ACD-A OPN 3C COVID-19 high titer	24
FRESH FROZEN PLASMA	EA327	Yes	Thawed Apheresis CONVALESCENT PLASMA	Thawed Apheresis CONVALESCENT PLASMA ACD-A/XX/refg Open 3rd container COVID-19 low titer	PLASMA Conv AFR Thaw ACD-A OPN 3C COVID-19 low titer	24
FRESH FROZEN PLASMA	EA328	Yes	Thawed Apheresis CONVALESCENT PLASMA	Thawed Apheresis CONVALESCENT PLASMA ACD-A/XX/refg Open 4th container COVID-19 high titer	PLASMA Conv AFR Thaw ACD-A OPN 4C COVID-19 high titer	24
FRESH FROZEN PLASMA	EA329	Yes	Thawed Apheresis CONVALESCENT PLASMA	Thawed Apheresis CONVALESCENT PLASMA ACD-A/XX/refg Open 4th container COVID-19 low titer	PLASMA Conv AFR Thaw ACD-A OPN 4C COVID-19 low titer	24
FRESH FROZEN PLASMA	EA330	Yes	Thawed Apheresis CONVALESCENT PLASMA	Thawed Apheresis CONVALESCENT PLASMA ACD-A/XX/refg Open Irradiated COVID-19 high titer	PLASMA Conv AFR Thaw ACD-A OPN IRD COVID-19 high titer	24
FRESH FROZEN PLASMA	EA331	Yes	Thawed Apheresis CONVALESCENT PLASMA	Thawed Apheresis CONVALESCENT PLASMA ACD-A/XX/refg Open Irradiated COVID-19 low titer	PLASMA Conv AFR Thaw ACD-A OPN IRD COVID-19 low titer	24
FRESH FROZEN PLASMA	EA332	Yes	Thawed Apheresis CONVALESCENT PLASMA	Thawed Apheresis CONVALESCENT PLASMA ACD-A/XX/refg Open Irradiated 1st container COVID-19 high titer	PLASMA Conv AFR Thaw ACD-A OPN IRD 1C COVID-19 high titer	24
FRESH FROZEN PLASMA	EA333	Yes	Thawed Apheresis CONVALESCENT PLASMA	Thawed Apheresis CONVALESCENT PLASMA ACD-A/XX/refg Open Irradiated 1st container COVID-19 low titer	PLASMA Conv AFR Thaw ACD-A OPN IRD 1C COVID-19 low titer	24
FRESH FROZEN PLASMA	EA334	Yes	Thawed Apheresis CONVALESCENT PLASMA	Thawed Apheresis CONVALESCENT PLASMA ACD-A/XX/refg Open Irradiated 2nd container COVID-19 high titer	PLASMA Conv AFR Thaw ACD-A OPN IRD 2C COVID-19 high titer	24
FRESH FROZEN PLASMA	EA335	Yes	Thawed Apheresis CONVALESCENT PLASMA	Thawed Apheresis CONVALESCENT PLASMA ACD-A/XX/refg Open Irradiated 2nd container COVID-19 low titer	PLASMA Conv AFR Thaw ACD-A OPN IRD 2C COVID-19 low titer	24
FRESH FROZEN PLASMA	EA336	Yes	Thawed Apheresis CONVALESCENT PLASMA	Thawed Apheresis CONVALESCENT PLASMA ACD-A/XX/refg Open Irradiated 3rd container COVID-19 high titer	PLASMA Conv AFR Thaw ACD-A OPN IRD 3C COVID-19 high titer	24
FRESH FROZEN PLASMA	EA337	Yes	Thawed Apheresis CONVALESCENT PLASMA	Thawed Apheresis CONVALESCENT PLASMA ACD-A/XX/refg Open Irradiated 3rd container COVID-19 low titer	PLASMA Conv AFR Thaw ACD-A OPN IRD 3C COVID-19 low titer	24
FRESH FROZEN PLASMA	EA338	No	Liquid CONVALESCENT PLASMA	Liquid CONVALESCENT PLASMA NS/XX/refg Not for tx or mnf COVID-19 high titer	PLASMA Conv Liq NS NMT COVID-19 high titer	624

Component	Product Code	Modifiable	Product Type	Long Name	Short Name	Maximum Storage Hours
FRESH FROZEN PLASMA	EA339	No	Liquid CONVALESCENT PLASMA	Liquid CONVALESCENT PLASMA NS/XX/refg Not for tx or mnf COVID-19 low titer	PLASMA Conv Liq NS NMT COVID-19 low titer	624
FRESH FROZEN PLASMA	EA340	No	CONVALESCENT PLASMA	CONVALESCENT PLASMA NS/XX/<=-18C Not for tx or mnf COVID-19 high titer	PLASMA Conv NS NMT COVID-19 high titer	8760
FRESH FROZEN PLASMA	EA341	No	CONVALESCENT PLASMA	CONVALESCENT PLASMA NS/XX/<=-18C Not for tx or mnf COVID-19 low titer	PLASMA Conv NS NMT COVID-19 low titer	8760
FRESH FROZEN PLASMA	EA342	Yes	Liquid CONVALESCENT PLASMA	Liquid CONVALESCENT PLASMA CPDA-1/XX/refg Irradiated COVID-19 high titer	PLASMA Conv Liq CPDA-1 IRD COVID-19 high titer	624
FRESH FROZEN PLASMA	EA343	Yes	Liquid CONVALESCENT PLASMA	Liquid CONVALESCENT PLASMA CPDA-1/XX/refg Irradiated COVID-19 low titer	PLASMA Conv Liq CPDA-1 IRD COVID-19 low titer	624
FRESH FROZEN PLASMA	EA388	Yes	Thawed CONVALESCENT PLASMA	Thawed CONVALESCENT PLASMA CPD/XX/refg Open COVID-19	PLASMA Conv Thaw CPD OPN COVID-19	120
FRESH FROZEN PLASMA	EA389	Yes	Thawed CONVALESCENT PLASMA	Thawed CONVALESCENT PLASMA CPD/XX/refg Open Irradiated COVID-19	PLASMA Conv Thaw CPD OPN IRD COVID-19	120
FRESH FROZEN PLASMA	EA390	Yes	Thawed CONVALESCENT PLASMA	Thawed CONVALESCENT PLASMA CPDA-1/XX/refg Open COVID-19	PLASMA Conv Thaw CPDA-1 OPN COVID-19	120
FRESH FROZEN PLASMA	EA391	Yes	Thawed CONVALESCENT PLASMA	Thawed CONVALESCENT PLASMA CPDA-1/XX/refg Open Irradiated COVID-19	PLASMA Conv Thaw CPDA-1 OPN IRD COVID-19	120
FRESH FROZEN PLASMA	EA393	Yes	CONVALESCENT PLASMA	CONVALESCENT PLASMA CPD/XX/<=-18C COVID-19 high titer	PLASMA Conv CPD COVID-19 high titer	8760
FRESH FROZEN PLASMA	EA394	Yes	CONVALESCENT PLASMA	CONVALESCENT PLASMA CPD/XX/<=-18C COVID-19 low titer	PLASMA Conv CPD COVID-19 low titer	8760

Table 3: Other Blood Products Not Related to COVID-19 Treatment

Component	Product Code	Modifiable	Product Type	Long Name	Short Name	Maximum Storage Hours
FRESH FROZEN PLASMA	E9889	Yes	FRESH FROZEN PLASMA	FRESH FROZEN PLASMA NaCitrate/XX/<=-25C Frozen <=18h Psoralen-treated	FFP NaCit Psoraln	8760
FRESH FROZEN PLASMA	E9900	Yes	Apheresis FRESH FROZEN PLASMA	Apheresis FRESH FROZEN PLASMA ACD-A/XX/<=-25C Frozen <=6h Psoralen-treated	FFP AFR ACD-A Psoraln	8760
FRESH FROZEN PLASMA	E9901	No	Apheresis FRESH FROZEN PLASMA	Apheresis FRESH FROZEN PLASMA NaCitrate/XX/<=-20C For mnf:injectable Frozen <=24h	FFP AFR NaCit MNFI	8760
FRESH FROZEN PLASMA	E9902	Yes	Apheresis FRESH FROZEN PLASMA	Apheresis FRESH FROZEN PLASMA NaCitrate/XX/<=-18C Frozen <=24h	FFP AFR NaCit	8760
FRESH FROZEN PLASMA	E9903	Yes	Thawed Apheresis FRESH FROZEN PLASMA	Thawed Apheresis FRESH FROZEN PLASMA NaCitrate/XX/refg Frozen <=24h	FFP AFR Thaw NaCit	24
FRESH FROZEN PLASMA	E9907	Yes	Thawed Apheresis PLASMA	Thawed Apheresis PLASMA ACD-A/XX/refg >=600mL RT<=24h frozen<=24h	PLASMA AFR Thaw ACD-A LrgVol	24
PLATELETS	E9908	Yes	Apheresis PLATELETS	Apheresis PLATELETS ACD-A>PAS-C/XX/20-24C Open Irradiated ResLeu:<5E6 Plasma reduced Psoralen-treated	PLT AFR ACD-A>PAS-C OPN IRD LUKOPR PLS Red Psoraln	4
PLATELETS	E9909	Yes	Apheresis PLATELETS	Apheresis PLATELETS ACD-A>PAS-C/XX/20-24C Open Irradiated ResLeu:<5E6 Plasma reduced 1st container Psoralen-treated	PLT AFR ACD-A>PAS-C OPN IRD LUKOPR PLS Red 1C Psoraln	4
PLATELETS	E9910	Yes	Apheresis PLATELETS	Apheresis PLATELETS ACD-A>PAS-C/XX/20-24C Open Irradiated ResLeu:<5E6 Plasma reduced 2nd container Psoralen-treated	PLT AFR ACD-A>PAS-C OPN IRD LUKOPR PLS Red 2C Psoraln	4
FRESH FROZEN PLASMA	E9911	Yes	Liquid CONVALESCENT PLASMA	Liquid CONVALESCENT PLASMA CPDA-1/XX/refg Irradiated COVID-19	PLASMA Conv Liq CPDA-1 IRD COVID-19	624
PLATELETS	E9912	Yes	Apheresis PLATELETS	Apheresis PLATELETS ACD-A>PAS-C/XX/20-24C Open Irradiated ResLeu:<5E6 Plasma reduced 3rd container Psoralen-treated	PLT AFR ACD-A>PAS-C OPN IRD LUKOPR PLS Red 3C Psoraln	4
PLATELETS	E9913	Yes	POOLED PLATELETS	POOLED PLATELETS CPD/XX/20-24C Open Irradiated ResLeu:<5E6 Plasma reduced 5 units	PLT Pool CPD OPN IRD LUKOPR PLS Red 5U	4
PLATELETS	E9914	Yes	POOLED PLATELETS	POOLED PLATELETS CPD/XX/20-24C Open Irradiated ResLeu:<5E6 Plasma reduced 6 units	PLT Pool CPD OPN IRD LUKOPR PLS Red 6U	4
FRESH FROZEN PLASMA	E9915	Yes	Apheresis FRESH FROZEN PLASMA	Apheresis FRESH FROZEN PLASMA ACD-A/XX/<=-25C Frozen <=15h Methylene blue-treated	FFP AFR ACD-A Methyl Blue	8760
FRESH FROZEN PLASMA	E9916	Yes	Liquid Apheresis PLASMA	Liquid Apheresis PLASMA NaCitrate/XX/refg Irradiated	PLASMA AFR Liq NaCit IRD	120
PLATELETS	E9917	Yes	Apheresis PLATELETS	Apheresis PLATELETS ACD-A/XX/20-24C 1st container <3E11 plts Bacterial monitoring	PLT AFR ACD-A 1C BacMtr	120
PLATELETS	E9918	Yes	Apheresis PLATELETS	Apheresis PLATELETS ACD-A/XX/20-24C 2nd container <3E11 plts Bacterial monitoring	PLT AFR ACD-A 2C BacMtr	120
PLATELETS	E9919	Yes	Apheresis PLATELETS	Apheresis PLATELETS ACD-A/XX/20-24C 3rd container <3E11 plts Bacterial monitoring	PLT AFR ACD-A 3C BacMtr	120

Component	Product Code	Modifiable	Product Type	Long Name	Short Name	Maximum Storage Hours
PLATELETS	E9920	Yes	Apheresis PLATELETS	Apheresis PLATELETS ACD-A/XX/20-24C Irradiated 1st container <3E11 plts Bacterial monitoring	PLT AFR ACD-A IRD 1C BacMtr	120
PLATELETS	E9921	Yes	Apheresis PLATELETS	Apheresis PLATELETS ACD-A/XX/20-24C Irradiated 2nd container <3E11 plts Bacterial monitoring	PLT AFR ACD-A IRD 2C BacMtr	120
PLATELETS	E9922	Yes	Apheresis PLATELETS	Apheresis PLATELETS ACD-A/XX/20-24C Irradiated 3rd container <3E11 plts Bacterial monitoring	PLT AFR ACD-A IRD 3C BacMtr	120
PLATELETS	E9923	No	Frozen Apheresis PLATELETS	Frozen Apheresis PLATELETS ACD-A/XX/<=-20C For mnf:noninjectable Irradiated ResLeu:<5E6 3rd container	PLT AFR Froz ACD-A MNFNI IRD LUKOPR 3C	8760
PLATELETS	E9924	No	Frozen Apheresis PLATELETS	Frozen Apheresis PLATELETS ACD-A/XX/<=-20C For mnf:noninjectable ResLeu:<5E6 1st container <3E11 plts Psoralen-treated	PLT AFR Froz ACD-A MNFNI LUKOPR 1C Psoraln	8760
PLATELETS	E9925	No	Frozen Apheresis PLATELETS	Frozen Apheresis PLATELETS ACD-A/XX/<=-20C For mnf:noninjectable ResLeu:<5E6 2nd container <3E11 plts Psoralen-treated	PLT AFR Froz ACD-A MNFNI LUKOPR 2C Psoraln	8760
PLATELETS	E9926	No	Frozen Apheresis PLATELETS	Frozen Apheresis PLATELETS ACD-A/XX/<=-20C For mnf:noninjectable ResLeu:<5E6 3rd container <3E11 plts Psoralen-treated	PLT AFR Froz ACD-A MNFNI LUKOPR 3C Psoraln	8760
PLATELETS	E9927	No	Frozen Apheresis PLATELETS	Frozen Apheresis PLATELETS ACD-A/XX/<=-20C For mnf:noninjectable Irradiated ResLeu:<5E6	PLT AFR Froz ACD-A MNFNI IRD LUKOPR	8760
PLATELETS	E9928	No	Frozen Apheresis PLATELETS	Frozen Apheresis PLATELETS ACD-A/XX/<=-20C For mnf:noninjectable Irradiated ResLeu:<5E6 1st container	PLT AFR Froz ACD-A MNFNI IRD LUKOPR 1C	8760
PLATELETS	E9929	No	Frozen Apheresis PLATELETS	Frozen Apheresis PLATELETS ACD-A/XX/<=-20C For mnf:noninjectable Irradiated ResLeu:<5E6 2nd container	PLT AFR Froz ACD-A MNFNI IRD LUKOPR 2C	8760
PLATELETS	E9930	Yes	Apheresis PLATELETS	Apheresis PLATELETS ACD-A/XX/20-24C ResLeu:<5E6 4th container Bacterial monitoring	PLT AFR ACD-A LUKOPR 4C BacMtr	120
PLATELETS	E9931	Yes	Apheresis PLATELETS	Apheresis PLATELETS ACD-A/XX/20-24C Irradiated ResLeu:<5E6 4th container Bacterial monitoring	PLT AFR ACD-A IRD LUKOPR 4C BacMtr	120
PLATELETS	E9932	Yes	Apheresis PLATELETS	Apheresis PLATELETS ACD-A/XX/20-24C ResLeu:<5E6 4th container <3E11 plts Bacterial monitoring	PLT AFR ACD-A LUKOPR 4C BacMtr	120
PLATELETS	E9933	Yes	Apheresis PLATELETS	Apheresis PLATELETS ACD-A/XX/20-24C Irradiated ResLeu:<5E6 4th container <3E11 plts Bacterial monitoring	PLT AFR ACD-A IRD LUKOPR 4C BacMtr	120
FRESH FROZEN PLASMA	E9937	Yes	Apheresis PLASMA	Apheresis PLASMA ACD-A/XX/<=-18C RT<=24h frozen<=24h 5th container	PLASMA AFR ACD-A 5C	8760
PLATELETS	E9938	Yes	Washed Apheresis PLATELETS	Washed Apheresis PLATELETS PAS-C/XX/20-24C Open Irradiated ResLeu:<5E6	PLT AFR Wash PAS-C OPN IRD LUKOPR	4
PLATELETS	E9939	Yes	Washed Apheresis PLATELETS	Washed Apheresis PLATELETS PAS-C/XX/20-24C Open Irradiated ResLeu:<5E6 1st container	PLT AFR Wash PAS-C OPN IRD LUKOPR 1C	4
PLATELETS	E9940	Yes	Washed Apheresis PLATELETS	Washed Apheresis PLATELETS PAS-C/XX/20-24C Open Irradiated ResLeu:<5E6 2nd container	PLT AFR Wash PAS-C OPN IRD LUKOPR 2C	4
PLATELETS	E9941	Yes	Washed Apheresis PLATELETS	Washed Apheresis PLATELETS PAS-C/XX/20-24C Open Irradiated ResLeu:<5E6 3rd container	PLT AFR Wash PAS-C OPN IRD LUKOPR 3C	4
PLATELETS	E9942	Yes	Apheresis PLATELETS	Apheresis PLATELETS ACD-A>PAS-C/XX/20-24C Open ResLeu:<5E6 Plasma reduced/Saline added	PLT AFR ACD-A>PAS-C OPN LUKOPR PLS Red/SAL Add	4

Component	Product Code	Modifiable	Product Type	Long Name	Short Name	Maximum Storage Hours
PLATELETS	E9943	Yes	Apheresis PLATELETS	Apheresis PLATELETS ACD-A>PAS-C/XX/20-24C Open ResLeu:<5E6 Plasma reduced/Saline added 1st container	PLT AFR ACD-A>PAS-C OPN LUKOPR PLS Red/SAL Add 1C	4
PLATELETS	E9944	Yes	Apheresis PLATELETS	Apheresis PLATELETS ACD-A>PAS-C/XX/20-24C Open ResLeu:<5E6 Plasma reduced/Saline added 2nd container	PLT AFR ACD-A>PAS-C OPN LUKOPR PLS Red/SAL Add 2C	4
PLATELETS	E9945	Yes	Apheresis PLATELETS	Apheresis PLATELETS ACD-A>PAS-C/XX/20-24C Open ResLeu:<5E6 Plasma reduced/Saline added 3rd container	PLT AFR ACD-A>PAS-C OPN LUKOPR PLS Red/SAL Add 3C	4
FRESH FROZEN PLASMA	E9946	Yes	Apheresis FRESH FROZEN PLASMA	Apheresis FRESH FROZEN PLASMA NaCitate/XX/<=-25C Frozen <=15h Riboflavin-treated	FFP AFR NaCit Ribo	8760
FRESH FROZEN PLASMA	E9947	Yes	Apheresis FRESH FROZEN PLASMA	Apheresis FRESH FROZEN PLASMA ACD-A/XX/<=-25C Frozen <=15h Riboflavin-treated	FFP AFR ACD-A Ribo	8760
RED BLOOD CELLS	E9948	No	RED BLOOD CELLS	RED BLOOD CELLS PAGGS-M/450mL/refg Irradiated ResLeu:<1E6 Plasma reduced	RBC PAGGS-M IRD LUKOPR PLS Red	672
RED BLOOD CELLS	E9949	No	RED BLOOD CELLS	RED BLOOD CELLS SAGM/450mL/refg Irradiated ResLeu:<1E6 Plasma reduced	RBC SAGM IRD LUKOPR PLS Red	672
PLATELETS	E9950	No	POOLED PLATELETS	POOLED PLATELETS PAS-E/XX/20-24C ResLeu:<1E6 Plasma reduced/Saline added Buffy coat plts prep Psoralen-treated	PLT Pool PAS-E LUKOPR PLS Red/SAL Add BUFCT Psoraln	120
PLATELETS	E9951	No	Apheresis PLATELETS	Apheresis PLATELETS PAS-E/XX/20-24C ResLeu:<1E6 Plasma reduced/Saline added Psoralen-treated	PLT AFR PAS-E LUKOPR PLS Red/SAL Add Psoraln	120
RED BLOOD CELLS	E9952	No	RED BLOOD CELLS	RED BLOOD CELLS PAGGS-M/450mL/refg ResLeu:<1E6 Plasma reduced	RBC PAGGS-M LUKOPR PLS Red	1008
RED BLOOD CELLS	E9953	No	RED BLOOD CELLS	RED BLOOD CELLS SAGM/450mL/refg ResLeu:<1E6 Plasma reduced	RBC SAGM LUKOPR PLS Red	1008
PLATELETS	E9954	Yes	Washed Apheresis PLATELETS	Washed Apheresis PLATELETS PAS-C/XX/20-24C Open ResLeu:<5E6	PLT AFR Wash PAS-C OPN LUKOPR	4
PLATELETS	E9955	Yes	Washed Apheresis PLATELETS	Washed Apheresis PLATELETS PAS-C/XX/20-24C Open ResLeu:<5E6 1st container	PLT AFR Wash PAS-C OPN LUKOPR 1C	4
PLATELETS	E9956	Yes	Washed Apheresis PLATELETS	Washed Apheresis PLATELETS PAS-C/XX/20-24C Open ResLeu:<5E6 2nd container	PLT AFR Wash PAS-C OPN LUKOPR 2C	4
PLATELETS	E9957	Yes	Washed Apheresis PLATELETS	Washed Apheresis PLATELETS PAS-C/XX/20-24C Open ResLeu:<5E6 3rd container	PLT AFR Wash PAS-C OPN LUKOPR 3C	4
PLATELETS	E9958	Yes	Washed Apheresis PLATELETS	Washed Apheresis PLATELETS PAS-C/XX/20-24C Open ResLeu:<5E6 Psoralen-treated	PLT AFR Wash PAS-C OPN LUKOPR Psoraln	4
PLATELETS	E9959	Yes	Washed Apheresis PLATELETS	Washed Apheresis PLATELETS PAS-C/XX/20-24C Open ResLeu:<5E6 1st container Psoralen-treated	PLT AFR Wash PAS-C OPN LUKOPR 1C Psoraln	4
PLATELETS	E9960	Yes	Washed Apheresis PLATELETS	Washed Apheresis PLATELETS PAS-C/XX/20-24C Open ResLeu:<5E6 2nd container Psoralen-treated	PLT AFR Wash PAS-C OPN LUKOPR 2C Psoraln	4
PLATELETS	E9961	Yes	Washed Apheresis PLATELETS	Washed Apheresis PLATELETS PAS-C/XX/20-24C Open ResLeu:<5E6 3rd container Psoralen-treated	PLT AFR Wash PAS-C OPN LUKOPR 3C Psoraln	4
PLATELETS	E9962	Yes	Apheresis PLATELETS	Apheresis PLATELETS ACD-A>PAS-F/XX/20-24C ResLeu:<5E6 2nd container <3E11 plts	PLT AFR ACD-A>PAS-F LUKOPR 2C	120
PLATELETS	E9963	Yes	Apheresis PLATELETS	Apheresis PLATELETS ACD-A>PAS-F/XX/20-24C ResLeu:<5E6 3rd container <3E11 plts	PLT AFR ACD-A>PAS-F LUKOPR 3C	120

Component	Product Code	Modifiable	Product Type	Long Name	Short Name	Maximum Storage Hours
PLATELETS	E9964	Yes	Apheresis PLATELETS	Apheresis PLATELETS ACD-A>PAS-F/XX/20-24C Irradiated ResLeu:<5E6 2nd container <3E11 plts	PLT AFR ACD-A>PAS-F IRD LUKOPR 2C	120
PLATELETS	E9965	Yes	Apheresis PLATELETS	Apheresis PLATELETS ACD-A>PAS-F/XX/20-24C Irradiated ResLeu:<5E6 3rd container <3E11 plts	PLT AFR ACD-A>PAS-F IRD LUKOPR 3C	120
PLATELETS	E9966	Yes	Apheresis PLATELETS	Apheresis PLATELETS ACD-A/XX/20-24C ResLeu:<5E6 Bacterial monitoring >=24h	PLT AFR ACD-A LUKOPR BacMtr >=24h	120
PLATELETS	E9967	Yes	Apheresis PLATELETS	Apheresis PLATELETS ACD-A/XX/20-24C ResLeu:<5E6 1st container Bacterial monitoring >=24h	PLT AFR ACD-A LUKOPR 1C BacMtr >=24h	120
PLATELETS	E9968	Yes	Apheresis PLATELETS	Apheresis PLATELETS ACD-A/XX/20-24C ResLeu:<5E6 2nd container Bacterial monitoring >=24h	PLT AFR ACD-A LUKOPR 2C BacMtr >=24h	120
PLATELETS	E9969	Yes	Apheresis PLATELETS	Apheresis PLATELETS ACD-A/XX/20-24C ResLeu:<5E6 3rd container Bacterial monitoring >=24h	PLT AFR ACD-A LUKOPR 3C BacMtr >=24h	120
PLATELETS	E9970	Yes	Apheresis PLATELETS	Apheresis PLATELETS ACD-A/XX/20-24C ResLeu:<5E6 <3E11 plts Bacterial monitoring >=24h	PLT AFR ACD-A LUKOPR BacMtr >=24h	120
PLATELETS	E9971	Yes	Apheresis PLATELETS	Apheresis PLATELETS ACD-A/XX/20-24C ResLeu:<5E6 1st container <3E11 plts Bacterial monitoring >=24h	PLT AFR ACD-A LUKOPR 1C BacMtr >=24h	120
PLATELETS	E9972	Yes	Apheresis PLATELETS	Apheresis PLATELETS ACD-A/XX/20-24C ResLeu:<5E6 2nd container <3E11 plts Bacterial monitoring >=24h	PLT AFR ACD-A LUKOPR 2C BacMtr >=24h	120
PLATELETS	E9973	Yes	Apheresis PLATELETS	Apheresis PLATELETS ACD-A/XX/20-24C ResLeu:<5E6 3rd container <3E11 plts Bacterial monitoring >=24h	PLT AFR ACD-A LUKOPR 3C BacMtr >=24h	120
PLATELETS	E9974	Yes	Apheresis PLATELETS	Apheresis PLATELETS ACD-A/XX/20-24C Irradiated ResLeu:<5E6 Bacterial monitoring >=24h	PLT AFR ACD-A IRD LUKOPR BacMtr >=24h	120
PLATELETS	E9975	Yes	Apheresis PLATELETS	Apheresis PLATELETS ACD-A/XX/20-24C Irradiated ResLeu:<5E6 1st container Bacterial monitoring >=24h	PLT AFR ACD-A IRD LUKOPR 1C BacMtr >=24h	120
PLATELETS	E9976	Yes	Apheresis PLATELETS	Apheresis PLATELETS ACD-A/XX/20-24C Irradiated ResLeu:<5E6 2nd container Bacterial monitoring >=24h	PLT AFR ACD-A IRD LUKOPR 2C BacMtr >=24h	120
PLATELETS	E9977	Yes	Apheresis PLATELETS	Apheresis PLATELETS ACD-A/XX/20-24C Irradiated ResLeu:<5E6 3rd container Bacterial monitoring >=24h	PLT AFR ACD-A IRD LUKOPR 3C BacMtr >=24h	120
PLATELETS	E9978	Yes	Apheresis PLATELETS	Apheresis PLATELETS ACD-A/XX/20-24C Irradiated ResLeu:<5E6 <3E11 plts Bacterial monitoring >=24h	PLT AFR ACD-A IRD LUKOPR BacMtr >=24h	120
PLATELETS	E9979	Yes	Apheresis PLATELETS	Apheresis PLATELETS ACD-A/XX/20-24C Irradiated ResLeu:<5E6 1st container <3E11 plts Bacterial monitoring >=24h	PLT AFR ACD-A IRD LUKOPR 1C BacMtr >=24h	120
PLATELETS	E9980	Yes	Apheresis PLATELETS	Apheresis PLATELETS ACD-A/XX/20-24C Irradiated ResLeu:<5E6 2nd container <3E11 plts Bacterial monitoring >=24h	PLT AFR ACD-A IRD LUKOPR 2C BacMtr >=24h	120
PLATELETS	E9981	Yes	Apheresis PLATELETS	Apheresis PLATELETS ACD-A/XX/20-24C Irradiated ResLeu:<5E6 3rd container <3E11 plts Bacterial monitoring >=24h	PLT AFR ACD-A IRD LUKOPR 3C BacMtr >=24h	120
PLATELETS	E9982	Yes	Apheresis PLATELETS	Apheresis PLATELETS ACD-A>PAS-F/XX/20-24C ResLeu:<5E6 Bacterial monitoring >=24h	PLT AFR ACD-A>PAS-F LUKOPR BacMtr >=24h	120

Component	Product Code	Modifiable	Product Type	Long Name	Short Name	Maximum Storage Hours
PLATELETS	E9983	Yes	Apheresis PLATELETS	Apheresis PLATELETS ACD-A>PAS-F/XX/20-24C ResLeu:<5E6 1st container Bacterial monitoring >=24h	PLT AFR ACD-A>PAS-F LUKOPR 1C BacMtr >=24h	120
PLATELETS	E9984	Yes	Apheresis PLATELETS	Apheresis PLATELETS ACD-A>PAS-F/XX/20-24C ResLeu:<5E6 2nd container Bacterial monitoring >=24h	PLT AFR ACD-A>PAS-F LUKOPR 2C BacMtr >=24h	120
PLATELETS	E9985	Yes	Apheresis PLATELETS	Apheresis PLATELETS ACD-A>PAS-F/XX/20-24C ResLeu:<5E6 3rd container Bacterial monitoring >=24h	PLT AFR ACD-A>PAS-F LUKOPR 3C BacMtr >=24h	120
PLATELETS	E9986	Yes	Apheresis PLATELETS	Apheresis PLATELETS ACD-A>PAS-F/XX/20-24C ResLeu:<5E6 <3E11 plts Bacterial monitoring >=24h	PLT AFR ACD-A>PAS-F LUKOPR BacMtr >=24h	120
PLATELETS	E9987	Yes	Apheresis PLATELETS	Apheresis PLATELETS ACD-A>PAS-F/XX/20-24C ResLeu:<5E6 1st container <3E11 plts Bacterial monitoring >=24h	PLT AFR ACD-A>PAS-F LUKOPR 1C BacMtr >=24h	120
PLATELETS	E9988	Yes	Apheresis PLATELETS	Apheresis PLATELETS ACD-A>PAS-F/XX/20-24C ResLeu:<5E6 2nd container <3E11 plts Bacterial monitoring >=24h	PLT AFR ACD-A>PAS-F LUKOPR 2C BacMtr >=24h	120
PLATELETS	E9989	Yes	Apheresis PLATELETS	Apheresis PLATELETS ACD-A>PAS-F/XX/20-24C ResLeu:<5E6 3rd container <3E11 plts Bacterial monitoring >=24h	PLT AFR ACD-A>PAS-F LUKOPR 3C BacMtr >=24h	120
PLATELETS	E9990	Yes	Apheresis PLATELETS	Apheresis PLATELETS ACD-A>PAS-F/XX/20-24C Irradiated ResLeu:<5E6 Bacterial monitoring >=24h	PLT AFR ACD-A>PAS-F IRD LUKOPR BacMtr >=24h	120
PLATELETS	E9991	Yes	Apheresis PLATELETS	Apheresis PLATELETS ACD-A>PAS-F/XX/20-24C Irradiated ResLeu:<5E6 1st container Bacterial monitoring >=24h	PLT AFR ACD-A>PAS-F IRD LUKOPR 1C BacMtr >=24h	120
PLATELETS	E9992	Yes	Apheresis PLATELETS	Apheresis PLATELETS ACD-A>PAS-F/XX/20-24C Irradiated ResLeu:<5E6 2nd container Bacterial monitoring >=24h	PLT AFR ACD-A>PAS-F IRD LUKOPR 2C BacMtr >=24h	120
PLATELETS	E9993	Yes	Apheresis PLATELETS	Apheresis PLATELETS ACD-A>PAS-F/XX/20-24C Irradiated ResLeu:<5E6 3rd container Bacterial monitoring >=24h	PLT AFR ACD-A>PAS-F IRD LUKOPR 3C BacMtr >=24h	120
PLATELETS	E9994	Yes	Apheresis PLATELETS	Apheresis PLATELETS ACD-A>PAS-F/XX/20-24C Irradiated ResLeu:<5E6 <3E11 plts Bacterial monitoring >=24h	PLT AFR ACD-A>PAS-F IRD LUKOPR BacMtr >=24h	120
PLATELETS	E9995	Yes	Apheresis PLATELETS	Apheresis PLATELETS ACD-A>PAS-F/XX/20-24C Irradiated ResLeu:<5E6 1st container <3E11 plts Bacterial monitoring >=24h	PLT AFR ACD-A>PAS-F IRD LUKOPR 1C BacMtr >=24h	120
PLATELETS	E9996	Yes	Apheresis PLATELETS	Apheresis PLATELETS ACD-A>PAS-F/XX/20-24C Irradiated ResLeu:<5E6 2nd container <3E11 plts Bacterial monitoring >=24h	PLT AFR ACD-A>PAS-F IRD LUKOPR 2C BacMtr >=24h	120
PLATELETS	E9997	Yes	Apheresis PLATELETS	Apheresis PLATELETS ACD-A>PAS-F/XX/20-24C Irradiated ResLeu:<5E6 3rd container <3E11 plts Bacterial monitoring >=24h	PLT AFR ACD-A>PAS-F IRD LUKOPR 3C BacMtr >=24h	120
PLATELETS	E9998	Yes	PLATELETS	PLATELETS CPD/450mL/20-24C Bacterial monitoring >=24h	PLT CPD BacMtr >=24h	120
PLATELETS	E9999	Yes	PLATELETS	PLATELETS CPD/500mL/20-24C Bacterial monitoring >=24h	PLT CPD BacMtr >=24h	120
PLATELETS	EA000	Yes	PLATELETS	PLATELETS CPD/450mL/20-24C ResLeu:<5E6 Bacterial monitoring >=24h	PLT CPD LUKOPR BacMtr >=24h	120
PLATELETS	EA001	Yes	PLATELETS	PLATELETS CPD/500mL/20-24C ResLeu:<5E6 Bacterial monitoring >=24h	PLT CPD LUKOPR BacMtr >=24h	120

Component	Product Code	Modifiable	Product Type	Long Name	Short Name	Maximum Storage Hours
PLATELETS	EA002	Yes	PLATELETS	PLATELETS CP2D/450mL/20-24C ResLeu:<5E6 Bacterial monitoring >=24h	PLT CP2D LUKOPR BacMtr >=24h	120
PLATELETS	EA003	Yes	PLATELETS	PLATELETS CP2D/500mL/20-24C ResLeu:<5E6 Bacterial monitoring >=24h	PLT CP2D LUKOPR BacMtr >=24h	120
PLATELETS	EA004	Yes	POOLED PLATELETS	POOLED PLATELETS CPD/XX/20-24C ResLeu:<5E6 Bacterial monitoring >=24h	PLT Pool CPD LUKOPR BacMtr >=24h	120
PLATELETS	EA005	Yes	POOLED PLATELETS	POOLED PLATELETS CPD/XX/20-24C ResLeu:<5E6 5 units Bacterial monitoring >=24h	PLT Pool CPD LUKOPR 5U BacMtr >=24h	120
PLATELETS	EA006	Yes	POOLED PLATELETS	POOLED PLATELETS CP2D/XX/20-24C ResLeu:<5E6 Bacterial monitoring >=24h	PLT Pool CP2D LUKOPR BacMtr >=24h	120
PLATELETS	EA007	Yes	Apheresis PLATELETS	Apheresis PLATELETS ACD-A/XX/20-24C ResLeu:<5E6 Bacterial monitoring >=36h	PLT AFR ACD-A LUKOPR BacMtr >=36h	120
PLATELETS	EA008	Yes	Apheresis PLATELETS	Apheresis PLATELETS ACD-A/XX/20-24C ResLeu:<5E6 1st container Bacterial monitoring >=36h	PLT AFR ACD-A LUKOPR 1C BacMtr >=36h	120
PLATELETS	EA009	Yes	Apheresis PLATELETS	Apheresis PLATELETS ACD-A/XX/20-24C ResLeu:<5E6 2nd container Bacterial monitoring >=36h	PLT AFR ACD-A LUKOPR 2C BacMtr >=36h	120
PLATELETS	EA010	Yes	Apheresis PLATELETS	Apheresis PLATELETS ACD-A/XX/20-24C ResLeu:<5E6 3rd container Bacterial monitoring >=36h	PLT AFR ACD-A LUKOPR 3C BacMtr >=36h	120
PLATELETS	EA011	Yes	Apheresis PLATELETS	Apheresis PLATELETS ACD-A/XX/20-24C ResLeu:<5E6 <3E11 plts Bacterial monitoring >=36h	PLT AFR ACD-A LUKOPR BacMtr >=36h	120
PLATELETS	EA012	Yes	Apheresis PLATELETS	Apheresis PLATELETS ACD-A/XX/20-24C ResLeu:<5E6 1st container <3E11 plts Bacterial monitoring >=36h	PLT AFR ACD-A LUKOPR 1C BacMtr >=36h	120
PLATELETS	EA013	Yes	Apheresis PLATELETS	Apheresis PLATELETS ACD-A/XX/20-24C ResLeu:<5E6 2nd container <3E11 plts Bacterial monitoring >=36h	PLT AFR ACD-A LUKOPR 2C BacMtr >=36h	120
PLATELETS	EA014	Yes	Apheresis PLATELETS	Apheresis PLATELETS ACD-A/XX/20-24C ResLeu:<5E6 3rd container <3E11 plts Bacterial monitoring >=36h	PLT AFR ACD-A LUKOPR 3C BacMtr >=36h	120
PLATELETS	EA015	Yes	Apheresis PLATELETS	Apheresis PLATELETS ACD-A/XX/20-24C Irradiated ResLeu:<5E6 Bacterial monitoring >=36h	PLT AFR ACD-A IRD LUKOPR BacMtr >=36h	120
PLATELETS	EA016	Yes	Apheresis PLATELETS	Apheresis PLATELETS ACD-A/XX/20-24C Irradiated ResLeu:<5E6 1st container Bacterial monitoring >=36h	PLT AFR ACD-A IRD LUKOPR 1C BacMtr >=36h	120
PLATELETS	EA017	Yes	Apheresis PLATELETS	Apheresis PLATELETS ACD-A/XX/20-24C Irradiated ResLeu:<5E6 2nd container Bacterial monitoring >=36h	PLT AFR ACD-A IRD LUKOPR 2C BacMtr >=36h	120
PLATELETS	EA018	Yes	Apheresis PLATELETS	Apheresis PLATELETS ACD-A/XX/20-24C Irradiated ResLeu:<5E6 3rd container Bacterial monitoring >=36h	PLT AFR ACD-A IRD LUKOPR 3C BacMtr >=36h	120
PLATELETS	EA019	Yes	Apheresis PLATELETS	Apheresis PLATELETS ACD-A/XX/20-24C Irradiated ResLeu:<5E6 <3E11 plts Bacterial monitoring >=36h	PLT AFR ACD-A IRD LUKOPR BacMtr >=36h	120
PLATELETS	EA020	Yes	Apheresis PLATELETS	Apheresis PLATELETS ACD-A/XX/20-24C Irradiated ResLeu:<5E6 1st container <3E11 plts Bacterial monitoring >=36h	PLT AFR ACD-A IRD LUKOPR 1C BacMtr >=36h	120
PLATELETS	EA021	Yes	Apheresis PLATELETS	Apheresis PLATELETS ACD-A/XX/20-24C Irradiated ResLeu:<5E6 2nd container <3E11 plts Bacterial monitoring >=36h	PLT AFR ACD-A IRD LUKOPR 2C BacMtr >=36h	120

Component	Product Code	Modifiable	Product Type	Long Name	Short Name	Maximum Storage Hours
PLATELETS	EA022	Yes	Apheresis PLATELETS	Apheresis PLATELETS ACD-A/XX/20-24C Irradiated ResLeu:<5E6 3rd container <3E11 plts Bacterial monitoring >=36h	PLT AFR ACD-A IRD LUKOPR 3C BacMtr >=36h	120
PLATELETS	EA023	Yes	Apheresis PLATELETS	Apheresis PLATELETS ACD-A>PAS-F/XX/20-24C ResLeu:<5E6 Bacterial monitoring >=36h	PLT AFR ACD-A>PAS-F LUKOPR BacMtr >=36h	120
PLATELETS	EA024	Yes	Apheresis PLATELETS	Apheresis PLATELETS ACD-A>PAS-F/XX/20-24C ResLeu:<5E6 1st container Bacterial monitoring >=36h	PLT AFR ACD-A>PAS-F LUKOPR 1C BacMtr >=36h	120
PLATELETS	EA025	Yes	Apheresis PLATELETS	Apheresis PLATELETS ACD-A>PAS-F/XX/20-24C ResLeu:<5E6 2nd container Bacterial monitoring >=36h	PLT AFR ACD-A>PAS-F LUKOPR 2C BacMtr >=36h	120
PLATELETS	EA026	Yes	Apheresis PLATELETS	Apheresis PLATELETS ACD-A>PAS-F/XX/20-24C ResLeu:<5E6 3rd container Bacterial monitoring >=36h	PLT AFR ACD-A>PAS-F LUKOPR 3C BacMtr >=36h	120
PLATELETS	EA027	Yes	Apheresis PLATELETS	Apheresis PLATELETS ACD-A>PAS-F/XX/20-24C ResLeu:<5E6 <3E11 plts Bacterial monitoring >=36h	PLT AFR ACD-A>PAS-F LUKOPR BacMtr >=36h	120
PLATELETS	EA028	Yes	Apheresis PLATELETS	Apheresis PLATELETS ACD-A>PAS-F/XX/20-24C ResLeu:<5E6 1st container <3E11 plts Bacterial monitoring >=36h	PLT AFR ACD-A>PAS-F LUKOPR 1C BacMtr >=36h	120
PLATELETS	EA029	Yes	Apheresis PLATELETS	Apheresis PLATELETS ACD-A>PAS-F/XX/20-24C ResLeu:<5E6 2nd container <3E11 plts Bacterial monitoring >=36h	PLT AFR ACD-A>PAS-F LUKOPR 2C BacMtr >=36h	120
PLATELETS	EA030	Yes	Apheresis PLATELETS	Apheresis PLATELETS ACD-A>PAS-F/XX/20-24C ResLeu:<5E6 3rd container <3E11 plts Bacterial monitoring >=36h	PLT AFR ACD-A>PAS-F LUKOPR 3C BacMtr >=36h	120
PLATELETS	EA031	Yes	Apheresis PLATELETS	Apheresis PLATELETS ACD-A>PAS-F/XX/20-24C Irradiated ResLeu:<5E6 Bacterial monitoring >=36h	PLT AFR ACD-A>PAS-F IRD LUKOPR BacMtr >=36h	120
PLATELETS	EA032	Yes	Apheresis PLATELETS	Apheresis PLATELETS ACD-A>PAS-F/XX/20-24C Irradiated ResLeu:<5E6 1st container Bacterial monitoring >=36h	PLT AFR ACD-A>PAS-F IRD LUKOPR 1C BacMtr >=36h	120
PLATELETS	EA033	Yes	Apheresis PLATELETS	Apheresis PLATELETS ACD-A>PAS-F/XX/20-24C Irradiated ResLeu:<5E6 2nd container Bacterial monitoring >=36h	PLT AFR ACD-A>PAS-F IRD LUKOPR 2C BacMtr >=36h	120
PLATELETS	EA034	Yes	Apheresis PLATELETS	Apheresis PLATELETS ACD-A>PAS-F/XX/20-24C Irradiated ResLeu:<5E6 3rd container Bacterial monitoring >=36h	PLT AFR ACD-A>PAS-F IRD LUKOPR 3C BacMtr >=36h	120
PLATELETS	EA035	Yes	Apheresis PLATELETS	Apheresis PLATELETS ACD-A>PAS-F/XX/20-24C Irradiated ResLeu:<5E6 <3E11 plts Bacterial monitoring >=36h	PLT AFR ACD-A>PAS-F IRD LUKOPR BacMtr >=36h	120
PLATELETS	EA036	Yes	Apheresis PLATELETS	Apheresis PLATELETS ACD-A>PAS-F/XX/20-24C Irradiated ResLeu:<5E6 1st container <3E11 plts Bacterial monitoring >=36h	PLT AFR ACD-A>PAS-F IRD LUKOPR 1C BacMtr >=36h	120
PLATELETS	EA037	Yes	Apheresis PLATELETS	Apheresis PLATELETS ACD-A>PAS-F/XX/20-24C Irradiated ResLeu:<5E6 2nd container <3E11 plts Bacterial monitoring >=36h	PLT AFR ACD-A>PAS-F IRD LUKOPR 2C BacMtr >=36h	120
PLATELETS	EA038	Yes	Apheresis PLATELETS	Apheresis PLATELETS ACD-A>PAS-F/XX/20-24C Irradiated ResLeu:<5E6 3rd container <3E11 plts Bacterial monitoring >=36h	PLT AFR ACD-A>PAS-F IRD LUKOPR 3C BacMtr >=36h	120
PLATELETS	EA039	Yes	PLATELETS	PLATELETS CPD/450mL/20-24C Bacterial monitoring >=36h	PLT CPD BacMtr >=36h	120

Component	Product Code	Modifiable	Product Type	Long Name	Short Name	Maximum Storage Hours
PLATELETS	EA040	Yes	PLATELETS	PLATELETS CPD/500mL/20-24C Bacterial monitoring >=36h	PLT CPD BacMtr >=36h	120
PLATELETS	EA041	Yes	PLATELETS	PLATELETS CPD/450mL/20-24C ResLeu:<5E6 Bacterial monitoring >=36h	PLT CPD LUKOPR BacMtr >=36h	120
PLATELETS	EA042	Yes	PLATELETS	PLATELETS CPD/500mL/20-24C ResLeu:<5E6 Bacterial monitoring >=36h	PLT CPD LUKOPR BacMtr >=36h	120
PLATELETS	EA043	Yes	PLATELETS	PLATELETS CP2D/450mL/20-24C ResLeu:<5E6 Bacterial monitoring >=36h	PLT CP2D LUKOPR BacMtr >=36h	120
PLATELETS	EA044	Yes	PLATELETS	PLATELETS CP2D/500mL/20-24C ResLeu:<5E6 Bacterial monitoring >=36h	PLT CP2D LUKOPR BacMtr >=36h	120
PLATELETS	EA045	Yes	POOLED PLATELETS	POOLED PLATELETS CPD/XX/20-24C ResLeu:<5E6 Bacterial monitoring >=36h	PLT Pool CPD LUKOPR BacMtr >=36h	120
PLATELETS	EA046	Yes	POOLED PLATELETS	POOLED PLATELETS CPD/XX/20-24C ResLeu:<5E6 5 units Bacterial monitoring >=36h	PLT Pool CPD LUKOPR 5U BacMtr >=36h	120
PLATELETS	EA047	Yes	POOLED PLATELETS	POOLED PLATELETS CP2D/XX/20-24C ResLeu:<5E6 Bacterial monitoring >=36h	PLT Pool CP2D LUKOPR BacMtr >=36h	120
PLATELETS	EA048	Yes	Apheresis PLATELETS	Apheresis PLATELETS ACD-A>PAS-F/XX/20-24C ResLeu:<5E6 Bacterial monitoring	PLT AFR ACD-A>PAS-F LUKOPR BacMtr	120
PLATELETS	EA049	Yes	Apheresis PLATELETS	Apheresis PLATELETS ACD-A>PAS-F/XX/20-24C ResLeu:<5E6 1st container Bacterial monitoring	PLT AFR ACD-A>PAS-F LUKOPR 1C BacMtr	120
PLATELETS	EA050	Yes	Apheresis PLATELETS	Apheresis PLATELETS ACD-A>PAS-F/XX/20-24C ResLeu:<5E6 2nd container Bacterial monitoring	PLT AFR ACD-A>PAS-F LUKOPR 2C BacMtr	120
PLATELETS	EA051	Yes	Apheresis PLATELETS	Apheresis PLATELETS ACD-A>PAS-F/XX/20-24C ResLeu:<5E6 3rd container Bacterial monitoring	PLT AFR ACD-A>PAS-F LUKOPR 3C BacMtr	120
PLATELETS	EA052	Yes	Apheresis PLATELETS	Apheresis PLATELETS ACD-A>PAS-F/XX/20-24C ResLeu:<5E6 <3E11 plts Bacterial monitoring	PLT AFR ACD-A>PAS-F LUKOPR BacMtr	120
PLATELETS	EA053	Yes	Apheresis PLATELETS	Apheresis PLATELETS ACD-A>PAS-F/XX/20-24C ResLeu:<5E6 1st container <3E11 plts Bacterial monitoring	PLT AFR ACD-A>PAS-F LUKOPR 1C BacMtr	120
PLATELETS	EA054	Yes	Apheresis PLATELETS	Apheresis PLATELETS ACD-A>PAS-F/XX/20-24C ResLeu:<5E6 2nd container <3E11 plts Bacterial monitoring	PLT AFR ACD-A>PAS-F LUKOPR 2C BacMtr	120
PLATELETS	EA055	Yes	Apheresis PLATELETS	Apheresis PLATELETS ACD-A>PAS-F/XX/20-24C ResLeu:<5E6 3rd container <3E11 plts Bacterial monitoring	PLT AFR ACD-A>PAS-F LUKOPR 3C BacMtr	120
PLATELETS	EA056	Yes	Apheresis PLATELETS	Apheresis PLATELETS ACD-A>PAS-F/XX/20-24C Irradiated ResLeu:<5E6 Bacterial monitoring	PLT AFR ACD-A>PAS-F IRD LUKOPR BacMtr	120
PLATELETS	EA057	Yes	Apheresis PLATELETS	Apheresis PLATELETS ACD-A>PAS-F/XX/20-24C Irradiated ResLeu:<5E6 1st container Bacterial monitoring	PLT AFR ACD-A>PAS-F IRD LUKOPR 1C BacMtr	120
PLATELETS	EA058	Yes	Apheresis PLATELETS	Apheresis PLATELETS ACD-A>PAS-F/XX/20-24C Irradiated ResLeu:<5E6 2nd container Bacterial monitoring	PLT AFR ACD-A>PAS-F IRD LUKOPR 2C BacMtr	120
PLATELETS	EA059	Yes	Apheresis PLATELETS	Apheresis PLATELETS ACD-A>PAS-F/XX/20-24C Irradiated ResLeu:<5E6 3rd container Bacterial monitoring	PLT AFR ACD-A>PAS-F IRD LUKOPR 3C BacMtr	120
PLATELETS	EA060	Yes	Apheresis PLATELETS	Apheresis PLATELETS ACD-A>PAS-F/XX/20-24C Irradiated ResLeu:<5E6 <3E11 plts Bacterial monitoring	PLT AFR ACD-A>PAS-F IRD LUKOPR BacMtr	120
PLATELETS	EA061	Yes	Apheresis PLATELETS	Apheresis PLATELETS ACD-A>PAS-F/XX/20-24C Irradiated ResLeu:<5E6 1st container <3E11 plts Bacterial monitoring	PLT AFR ACD-A>PAS-F IRD LUKOPR 1C BacMtr	120

Component	Product Code	Modifiable	Product Type	Long Name	Short Name	Maximum Storage Hours
PLATELETS	EA062	Yes	Apheresis PLATELETS	Apheresis PLATELETS ACD-A>PAS-F/XX/20-24C Irradiated ResLeu:<5E6 2nd container <3E11 plts Bacterial monitoring	PLT AFR ACD-A>PAS-F IRD LUKOPR 2C BacMtr	120
PLATELETS	EA063	Yes	Apheresis PLATELETS	Apheresis PLATELETS ACD-A>PAS-F/XX/20-24C Irradiated ResLeu:<5E6 3rd container <3E11 plts Bacterial monitoring	PLT AFR ACD-A>PAS-F IRD LUKOPR 3C BacMtr	120
PLATELETS	EA064	Yes	Apheresis PLATELETS	Apheresis PLATELETS ACD-A/XX/20-24C Bacterial monitoring >=24h	PLT AFR ACD-A BacMtr >=24h	120
PLATELETS	EA065	Yes	Apheresis PLATELETS	Apheresis PLATELETS ACD-A/XX/20-24C 1st container Bacterial monitoring >=24h	PLT AFR ACD-A 1C BacMtr >=24h	120
PLATELETS	EA066	Yes	Apheresis PLATELETS	Apheresis PLATELETS ACD-A/XX/20-24C 2nd container Bacterial monitoring >=24h	PLT AFR ACD-A 2C BacMtr >=24h	120
PLATELETS	EA067	Yes	Apheresis PLATELETS	Apheresis PLATELETS ACD-A/XX/20-24C 3rd container Bacterial monitoring >=24h	PLT AFR ACD-A 3C BacMtr >=24h	120
PLATELETS	EA068	Yes	Apheresis PLATELETS	Apheresis PLATELETS ACD-A/XX/20-24C <3E11 plts Bacterial monitoring >=24h	PLT AFR ACD-A BacMtr >=24h	120
PLATELETS	EA069	Yes	Apheresis PLATELETS	Apheresis PLATELETS ACD-A/XX/20-24C 1st container <3E11 plts Bacterial monitoring >=24h	PLT AFR ACD-A 1C BacMtr >=24h	120
PLATELETS	EA070	Yes	Apheresis PLATELETS	Apheresis PLATELETS ACD-A/XX/20-24C 2nd container <3E11 plts Bacterial monitoring >=24h	PLT AFR ACD-A 2C BacMtr >=24h	120
PLATELETS	EA071	Yes	Apheresis PLATELETS	Apheresis PLATELETS ACD-A/XX/20-24C 3rd container <3E11 plts Bacterial monitoring >=24h	PLT AFR ACD-A 3C BacMtr >=24h	120
PLATELETS	EA072	Yes	Apheresis PLATELETS	Apheresis PLATELETS ACD-A/XX/20-24C Irradiated Bacterial monitoring >=24h	PLT AFR ACD-A IRD BacMtr >=24h	120
PLATELETS	EA073	Yes	Apheresis PLATELETS	Apheresis PLATELETS ACD-A/XX/20-24C Irradiated 1st container Bacterial monitoring >=24h	PLT AFR ACD-A IRD 1C BacMtr >=24h	120
PLATELETS	EA074	Yes	Apheresis PLATELETS	Apheresis PLATELETS ACD-A/XX/20-24C Irradiated 2nd container Bacterial monitoring >=24h	PLT AFR ACD-A IRD 2C BacMtr >=24h	120
PLATELETS	EA075	Yes	Apheresis PLATELETS	Apheresis PLATELETS ACD-A/XX/20-24C Irradiated 3rd container Bacterial monitoring >=24h	PLT AFR ACD-A IRD 3C BacMtr >=24h	120
PLATELETS	EA076	Yes	Apheresis PLATELETS	Apheresis PLATELETS ACD-A/XX/20-24C Irradiated <3E11 plts Bacterial monitoring >=24h	PLT AFR ACD-A IRD BacMtr >=24h	120
PLATELETS	EA077	Yes	Apheresis PLATELETS	Apheresis PLATELETS ACD-A/XX/20-24C Irradiated 1st container <3E11 plts Bacterial monitoring >=24h	PLT AFR ACD-A IRD 1C BacMtr >=24h	120
PLATELETS	EA078	Yes	Apheresis PLATELETS	Apheresis PLATELETS ACD-A/XX/20-24C Irradiated 2nd container <3E11 plts Bacterial monitoring >=24h	PLT AFR ACD-A IRD 2C BacMtr >=24h	120
PLATELETS	EA079	Yes	Apheresis PLATELETS	Apheresis PLATELETS ACD-A/XX/20-24C Irradiated 3rd container <3E11 plts Bacterial monitoring >=24h	PLT AFR ACD-A IRD 3C BacMtr >=24h	120
PLATELETS	EA080	Yes	Apheresis PLATELETS	Apheresis PLATELETS ACD-A>PAS-C/XX/20-24C Bacterial monitoring >=24h	PLT AFR ACD-A>PAS-C BacMtr >=24h	120
PLATELETS	EA081	Yes	Apheresis PLATELETS	Apheresis PLATELETS ACD-A>PAS-C/XX/20-24C 1st container Bacterial monitoring >=24h	PLT AFR ACD-A>PAS-C 1C BacMtr >=24h	120
PLATELETS	EA082	Yes	Apheresis PLATELETS	Apheresis PLATELETS ACD-A>PAS-C/XX/20-24C 2nd container Bacterial monitoring >=24h	PLT AFR ACD-A>PAS-C 2C BacMtr >=24h	120

Component	Product Code	Modifiable	Product Type	Long Name	Short Name	Maximum Storage Hours
PLATELETS	EA083	Yes	Apheresis PLATELETS	Apheresis PLATELETS ACD-A>PAS-C/XX/20-24C 3rd container Bacterial monitoring >=24h	PLT AFR ACD-A>PAS-C 3C BacMtr >=24h	120
PLATELETS	EA084	Yes	Apheresis PLATELETS	Apheresis PLATELETS ACD-A>PAS-C/XX/20-24C <3E11 plts Bacterial monitoring >=24h	PLT AFR ACD-A>PAS-C BacMtr >=24h	120
PLATELETS	EA085	Yes	Apheresis PLATELETS	Apheresis PLATELETS ACD-A>PAS-C/XX/20-24C 1st container <3E11 plts Bacterial monitoring >=24h	PLT AFR ACD-A>PAS-C 1C BacMtr >=24h	120
PLATELETS	EA086	Yes	Apheresis PLATELETS	Apheresis PLATELETS ACD-A>PAS-C/XX/20-24C 2nd container <3E11 plts Bacterial monitoring >=24h	PLT AFR ACD-A>PAS-C 2C BacMtr >=24h	120
PLATELETS	EA087	Yes	Apheresis PLATELETS	Apheresis PLATELETS ACD-A>PAS-C/XX/20-24C 3rd container <3E11 plts Bacterial monitoring >=24h	PLT AFR ACD-A>PAS-C 3C BacMtr >=24h	120
PLATELETS	EA088	Yes	Apheresis PLATELETS	Apheresis PLATELETS ACD-A>PAS-C/XX/20-24C ResLeu:<5E6 Bacterial monitoring >=24h	PLT AFR ACD-A>PAS-C LUKOPR BacMtr >=24h	120
PLATELETS	EA089	Yes	Apheresis PLATELETS	Apheresis PLATELETS ACD-A>PAS-C/XX/20-24C ResLeu:<5E6 1st container Bacterial monitoring >=24h	PLT AFR ACD-A>PAS-C LUKOPR 1C BacMtr >=24h	120
PLATELETS	EA090	Yes	Apheresis PLATELETS	Apheresis PLATELETS ACD-A>PAS-C/XX/20-24C ResLeu:<5E6 2nd container Bacterial monitoring >=24h	PLT AFR ACD-A>PAS-C LUKOPR 2C BacMtr >=24h	120
PLATELETS	EA091	Yes	Apheresis PLATELETS	Apheresis PLATELETS ACD-A>PAS-C/XX/20-24C ResLeu:<5E6 3rd container Bacterial monitoring >=24h	PLT AFR ACD-A>PAS-C LUKOPR 3C BacMtr >=24h	120
PLATELETS	EA092	Yes	Apheresis PLATELETS	Apheresis PLATELETS ACD-A>PAS-C/XX/20-24C ResLeu:<5E6 <3E11 plts Bacterial monitoring >=24h	PLT AFR ACD-A>PAS-C LUKOPR BacMtr >=24h	120
PLATELETS	EA093	Yes	Apheresis PLATELETS	Apheresis PLATELETS ACD-A>PAS-C/XX/20-24C ResLeu:<5E6 1st container <3E11 plts Bacterial monitoring >=24h	PLT AFR ACD-A>PAS-C LUKOPR 1C BacMtr >=24h	120
PLATELETS	EA094	Yes	Apheresis PLATELETS	Apheresis PLATELETS ACD-A>PAS-C/XX/20-24C ResLeu:<5E6 2nd container <3E11 plts Bacterial monitoring >=24h	PLT AFR ACD-A>PAS-C LUKOPR 2C BacMtr >=24h	120
PLATELETS	EA095	Yes	Apheresis PLATELETS	Apheresis PLATELETS ACD-A>PAS-C/XX/20-24C ResLeu:<5E6 3rd container <3E11 plts Bacterial monitoring >=24h	PLT AFR ACD-A>PAS-C LUKOPR 3C BacMtr >=24h	120
PLATELETS	EA096	Yes	Apheresis PLATELETS	Apheresis PLATELETS ACD-A>PAS-C/XX/20-24C Irradiated Bacterial monitoring >=24h	PLT AFR ACD-A>PAS-C IRD BacMtr >=24h	120
PLATELETS	EA097	Yes	Apheresis PLATELETS	Apheresis PLATELETS ACD-A>PAS-C/XX/20-24C Irradiated 1st container Bacterial monitoring >=24h	PLT AFR ACD-A>PAS-C IRD 1C BacMtr >=24h	120
PLATELETS	EA098	Yes	Apheresis PLATELETS	Apheresis PLATELETS ACD-A>PAS-C/XX/20-24C Irradiated 2nd container Bacterial monitoring >=24h	PLT AFR ACD-A>PAS-C IRD 2C BacMtr >=24h	120
PLATELETS	EA099	Yes	Apheresis PLATELETS	Apheresis PLATELETS ACD-A>PAS-C/XX/20-24C Irradiated 3rd container Bacterial monitoring >=24h	PLT AFR ACD-A>PAS-C IRD 3C BacMtr >=24h	120
PLATELETS	EA100	Yes	Apheresis PLATELETS	Apheresis PLATELETS ACD-A>PAS-C/XX/20-24C Irradiated <3E11 plts Bacterial monitoring >=24h	PLT AFR ACD-A>PAS-C IRD BacMtr >=24h	120
PLATELETS	EA101	Yes	Apheresis PLATELETS	Apheresis PLATELETS ACD-A>PAS-C/XX/20-24C Irradiated 1st container <3E11 plts Bacterial monitoring >=24h	PLT AFR ACD-A>PAS-C IRD 1C BacMtr >=24h	120
PLATELETS	EA102	Yes	Apheresis PLATELETS	Apheresis PLATELETS ACD-A>PAS-C/XX/20-24C Irradiated 2nd container <3E11 plts Bacterial monitoring >=24h	PLT AFR ACD-A>PAS-C IRD 2C BacMtr >=24h	120
PLATELETS	EA103	Yes	Apheresis PLATELETS	Apheresis PLATELETS ACD-A>PAS-C/XX/20-24C Irradiated 3rd container <3E11 plts Bacterial monitoring >=24h	PLT AFR ACD-A>PAS-C IRD 3C BacMtr >=24h	120

Component	Product Code	Modifiable	Product Type	Long Name	Short Name	Maximum Storage Hours
PLATELETS	EA104	Yes	Apheresis PLATELETS	Apheresis PLATELETS ACD-A>PAS-C/XX/20-24C Irradiated ResLeu:<5E6 Bacterial monitoring >=24h	PLT AFR ACD-A>PAS-C IRD LUKOPR BacMtr >=24h	120
PLATELETS	EA105	Yes	Apheresis PLATELETS	Apheresis PLATELETS ACD-A>PAS-C/XX/20-24C Irradiated ResLeu:<5E6 1st container Bacterial monitoring >=24h	PLT AFR ACD-A>PAS-C IRD LUKOPR 1C BacMtr >=24h	120
PLATELETS	EA106	Yes	Apheresis PLATELETS	Apheresis PLATELETS ACD-A>PAS-C/XX/20-24C Irradiated ResLeu:<5E6 2nd container Bacterial monitoring >=24h	PLT AFR ACD-A>PAS-C IRD LUKOPR 2C BacMtr >=24h	120
PLATELETS	EA107	Yes	Apheresis PLATELETS	Apheresis PLATELETS ACD-A>PAS-C/XX/20-24C Irradiated ResLeu:<5E6 3rd container Bacterial monitoring >=24h	PLT AFR ACD-A>PAS-C IRD LUKOPR 3C BacMtr >=24h	120
PLATELETS	EA108	Yes	Apheresis PLATELETS	Apheresis PLATELETS ACD-A>PAS-C/XX/20-24C Irradiated ResLeu:<5E6 <3E11 plts Bacterial monitoring >=24h	PLT AFR ACD-A>PAS-C IRD LUKOPR BacMtr >=24h	120
PLATELETS	EA109	Yes	Apheresis PLATELETS	Apheresis PLATELETS ACD-A>PAS-C/XX/20-24C Irradiated ResLeu:<5E6 1st container <3E11 plts Bacterial monitoring >=24h	PLT AFR ACD-A>PAS-C IRD LUKOPR 1C BacMtr >=24h	120
PLATELETS	EA110	Yes	Apheresis PLATELETS	Apheresis PLATELETS ACD-A>PAS-C/XX/20-24C Irradiated ResLeu:<5E6 2nd container <3E11 plts Bacterial monitoring >=24h	PLT AFR ACD-A>PAS-C IRD LUKOPR 2C BacMtr >=24h	120
PLATELETS	EA111	Yes	Apheresis PLATELETS	Apheresis PLATELETS ACD-A>PAS-C/XX/20-24C Irradiated ResLeu:<5E6 3rd container <3E11 plts Bacterial monitoring >=24h	PLT AFR ACD-A>PAS-C IRD LUKOPR 3C BacMtr >=24h	120
PLATELETS	EA112	Yes	Apheresis PLATELETS	Apheresis PLATELETS ACD-A/XX/20-24C Bacterial monitoring >=36h	PLT AFR ACD-A BacMtr >=36h	120
PLATELETS	EA113	Yes	Apheresis PLATELETS	Apheresis PLATELETS ACD-A/XX/20-24C 1st container Bacterial monitoring >=36h	PLT AFR ACD-A 1C BacMtr >=36h	120
PLATELETS	EA114	Yes	Apheresis PLATELETS	Apheresis PLATELETS ACD-A/XX/20-24C 2nd container Bacterial monitoring >=36h	PLT AFR ACD-A 2C BacMtr >=36h	120
PLATELETS	EA115	Yes	Apheresis PLATELETS	Apheresis PLATELETS ACD-A/XX/20-24C 3rd container Bacterial monitoring >=36h	PLT AFR ACD-A 3C BacMtr >=36h	120
PLATELETS	EA116	Yes	Apheresis PLATELETS	Apheresis PLATELETS ACD-A/XX/20-24C <3E11 plts Bacterial monitoring >=36h	PLT AFR ACD-A BacMtr >=36h	120
PLATELETS	EA117	Yes	Apheresis PLATELETS	Apheresis PLATELETS ACD-A/XX/20-24C 1st container <3E11 plts Bacterial monitoring >=36h	PLT AFR ACD-A 1C BacMtr >=36h	120
PLATELETS	EA118	Yes	Apheresis PLATELETS	Apheresis PLATELETS ACD-A/XX/20-24C 2nd container <3E11 plts Bacterial monitoring >=36h	PLT AFR ACD-A 2C BacMtr >=36h	120
PLATELETS	EA119	Yes	Apheresis PLATELETS	Apheresis PLATELETS ACD-A/XX/20-24C 3rd container <3E11 plts Bacterial monitoring >=36h	PLT AFR ACD-A 3C BacMtr >=36h	120
PLATELETS	EA120	Yes	Apheresis PLATELETS	Apheresis PLATELETS ACD-A/XX/20-24C Irradiated Bacterial monitoring >=36h	PLT AFR ACD-A IRD BacMtr >=36h	120
PLATELETS	EA121	Yes	Apheresis PLATELETS	Apheresis PLATELETS ACD-A/XX/20-24C Irradiated 1st container Bacterial monitoring >=36h	PLT AFR ACD-A IRD 1C BacMtr >=36h	120
PLATELETS	EA122	Yes	Apheresis PLATELETS	Apheresis PLATELETS ACD-A/XX/20-24C Irradiated 2nd container Bacterial monitoring >=36h	PLT AFR ACD-A IRD 2C BacMtr >=36h	120

Component	Product Code	Modifiable	Product Type	Long Name	Short Name	Maximum Storage Hours
PLATELETS	EA123	Yes	Apheresis PLATELETS	Apheresis PLATELETS ACD-A/XX/20-24C Irradiated 3rd container Bacterial monitoring >=36h	PLT AFR ACD-A IRD 3C BacMtr >=36h	120
PLATELETS	EA124	Yes	Apheresis PLATELETS	Apheresis PLATELETS ACD-A/XX/20-24C Irradiated <3E11 plts Bacterial monitoring >=36h	PLT AFR ACD-A IRD BacMtr >=36h	120
PLATELETS	EA125	Yes	Apheresis PLATELETS	Apheresis PLATELETS ACD-A/XX/20-24C Irradiated 1st container <3E11 plts Bacterial monitoring >=36h	PLT AFR ACD-A IRD 1C BacMtr >=36h	120
PLATELETS	EA126	Yes	Apheresis PLATELETS	Apheresis PLATELETS ACD-A/XX/20-24C Irradiated 2nd container <3E11 plts Bacterial monitoring >=36h	PLT AFR ACD-A IRD 2C BacMtr >=36h	120
PLATELETS	EA127	Yes	Apheresis PLATELETS	Apheresis PLATELETS ACD-A/XX/20-24C Irradiated 3rd container <3E11 plts Bacterial monitoring >=36h	PLT AFR ACD-A IRD 3C BacMtr >=36h	120
PLATELETS	EA128	Yes	Apheresis PLATELETS	Apheresis PLATELETS ACD-A>PAS-C/XX/20-24C Bacterial monitoring >=36h	PLT AFR ACD-A>PAS-C BacMtr >=36h	120
PLATELETS	EA129	Yes	Apheresis PLATELETS	Apheresis PLATELETS ACD-A>PAS-C/XX/20-24C 1st container Bacterial monitoring >=36h	PLT AFR ACD-A>PAS-C 1C BacMtr >=36h	120
PLATELETS	EA130	Yes	Apheresis PLATELETS	Apheresis PLATELETS ACD-A>PAS-C/XX/20-24C 2nd container Bacterial monitoring >=36h	PLT AFR ACD-A>PAS-C 2C BacMtr >=36h	120
PLATELETS	EA131	Yes	Apheresis PLATELETS	Apheresis PLATELETS ACD-A>PAS-C/XX/20-24C 3rd container Bacterial monitoring >=36h	PLT AFR ACD-A>PAS-C 3C BacMtr >=36h	120
PLATELETS	EA132	Yes	Apheresis PLATELETS	Apheresis PLATELETS ACD-A>PAS-C/XX/20-24C <3E11 plts Bacterial monitoring >=36h	PLT AFR ACD-A>PAS-C BacMtr >=36h	120
PLATELETS	EA133	Yes	Apheresis PLATELETS	Apheresis PLATELETS ACD-A>PAS-C/XX/20-24C 1st container <3E11 plts Bacterial monitoring >=36h	PLT AFR ACD-A>PAS-C 1C BacMtr >=36h	120
PLATELETS	EA134	Yes	Apheresis PLATELETS	Apheresis PLATELETS ACD-A>PAS-C/XX/20-24C 2nd container <3E11 plts Bacterial monitoring >=36h	PLT AFR ACD-A>PAS-C 2C BacMtr >=36h	120
PLATELETS	EA135	Yes	Apheresis PLATELETS	Apheresis PLATELETS ACD-A>PAS-C/XX/20-24C 3rd container <3E11 plts Bacterial monitoring >=36h	PLT AFR ACD-A>PAS-C 3C BacMtr >=36h	120
PLATELETS	EA136	Yes	Apheresis PLATELETS	Apheresis PLATELETS ACD-A>PAS-C/XX/20-24C ResLeu:<5E6 Bacterial monitoring >=36h	PLT AFR ACD-A>PAS-C LUKOPR BacMtr >=36h	120
PLATELETS	EA137	Yes	Apheresis PLATELETS	Apheresis PLATELETS ACD-A>PAS-C/XX/20-24C ResLeu:<5E6 1st container Bacterial monitoring >=36h	PLT AFR ACD-A>PAS-C LUKOPR 1C BacMtr >=36h	120
PLATELETS	EA138	Yes	Apheresis PLATELETS	Apheresis PLATELETS ACD-A>PAS-C/XX/20-24C ResLeu:<5E6 2nd container Bacterial monitoring >=36h	PLT AFR ACD-A>PAS-C LUKOPR 2C BacMtr >=36h	120
PLATELETS	EA139	Yes	Apheresis PLATELETS	Apheresis PLATELETS ACD-A>PAS-C/XX/20-24C ResLeu:<5E6 3rd container Bacterial monitoring >=36h	PLT AFR ACD-A>PAS-C LUKOPR 3C BacMtr >=36h	120
PLATELETS	EA140	Yes	Apheresis PLATELETS	Apheresis PLATELETS ACD-A>PAS-C/XX/20-24C ResLeu:<5E6 <3E11 plts Bacterial monitoring >=36h	PLT AFR ACD-A>PAS-C LUKOPR BacMtr >=36h	120
PLATELETS	EA141	Yes	Apheresis PLATELETS	Apheresis PLATELETS ACD-A>PAS-C/XX/20-24C ResLeu:<5E6 1st container <3E11 plts Bacterial monitoring >=36h	PLT AFR ACD-A>PAS-C LUKOPR 1C BacMtr >=36h	120
PLATELETS	EA142	Yes	Apheresis PLATELETS	Apheresis PLATELETS ACD-A>PAS-C/XX/20-24C ResLeu:<5E6 2nd container <3E11 plts Bacterial monitoring >=36h	PLT AFR ACD-A>PAS-C LUKOPR 2C BacMtr >=36h	120
PLATELETS	EA143	Yes	Apheresis PLATELETS	Apheresis PLATELETS ACD-A>PAS-C/XX/20-24C ResLeu:<5E6 3rd container <3E11 plts Bacterial monitoring >=36h	PLT AFR ACD-A>PAS-C LUKOPR 3C BacMtr >=36h	120

Component	Product Code	Modifiable	Product Type	Long Name	Short Name	Maximum Storage Hours
PLATELETS	EA144	Yes	Apheresis PLATELETS	Apheresis PLATELETS ACD-A>PAS-C/XX/20-24C Irradiated Bacterial monitoring >=36h	PLT AFR ACD-A>PAS-C IRD BacMtr >=36h	120
PLATELETS	EA145	Yes	Apheresis PLATELETS	Apheresis PLATELETS ACD-A>PAS-C/XX/20-24C Irradiated 1st container Bacterial monitoring >=36h	PLT AFR ACD-A>PAS-C IRD 1C BacMtr >=36h	120
PLATELETS	EA146	Yes	Apheresis PLATELETS	Apheresis PLATELETS ACD-A>PAS-C/XX/20-24C Irradiated 2nd container Bacterial monitoring >=36h	PLT AFR ACD-A>PAS-C IRD 2C BacMtr >=36h	120
PLATELETS	EA147	Yes	Apheresis PLATELETS	Apheresis PLATELETS ACD-A>PAS-C/XX/20-24C Irradiated 3rd container Bacterial monitoring >=36h	PLT AFR ACD-A>PAS-C IRD 3C BacMtr >=36h	120
PLATELETS	EA148	Yes	Apheresis PLATELETS	Apheresis PLATELETS ACD-A>PAS-C/XX/20-24C Irradiated <3E11 plts Bacterial monitoring >=36h	PLT AFR ACD-A>PAS-C IRD BacMtr >=36h	120
PLATELETS	EA149	Yes	Apheresis PLATELETS	Apheresis PLATELETS ACD-A>PAS-C/XX/20-24C Irradiated 1st container <3E11 plts Bacterial monitoring >=36h	PLT AFR ACD-A>PAS-C IRD 1C BacMtr >=36h	120
PLATELETS	EA150	Yes	Apheresis PLATELETS	Apheresis PLATELETS ACD-A>PAS-C/XX/20-24C Irradiated 2nd container <3E11 plts Bacterial monitoring >=36h	PLT AFR ACD-A>PAS-C IRD 2C BacMtr >=36h	120
PLATELETS	EA151	Yes	Apheresis PLATELETS	Apheresis PLATELETS ACD-A>PAS-C/XX/20-24C Irradiated 3rd container <3E11 plts Bacterial monitoring >=36h	PLT AFR ACD-A>PAS-C IRD 3C BacMtr >=36h	120
PLATELETS	EA152	Yes	Apheresis PLATELETS	Apheresis PLATELETS ACD-A>PAS-C/XX/20-24C Irradiated ResLeu:<5E6 Bacterial monitoring >=36h	PLT AFR ACD-A>PAS-C IRD LUKOPR BacMtr >=36h	120
PLATELETS	EA153	Yes	Apheresis PLATELETS	Apheresis PLATELETS ACD-A>PAS-C/XX/20-24C Irradiated ResLeu:<5E6 1st container Bacterial monitoring >=36h	PLT AFR ACD-A>PAS-C IRD LUKOPR 1C BacMtr >=36h	120
PLATELETS	EA154	Yes	Apheresis PLATELETS	Apheresis PLATELETS ACD-A>PAS-C/XX/20-24C Irradiated ResLeu:<5E6 2nd container Bacterial monitoring >=36h	PLT AFR ACD-A>PAS-C IRD LUKOPR 2C BacMtr >=36h	120
PLATELETS	EA155	Yes	Apheresis PLATELETS	Apheresis PLATELETS ACD-A>PAS-C/XX/20-24C Irradiated ResLeu:<5E6 3rd container Bacterial monitoring >=36h	PLT AFR ACD-A>PAS-C IRD LUKOPR 3C BacMtr >=36h	120
PLATELETS	EA156	Yes	Apheresis PLATELETS	Apheresis PLATELETS ACD-A>PAS-C/XX/20-24C Irradiated ResLeu:<5E6 <3E11 plts Bacterial monitoring >=36h	PLT AFR ACD-A>PAS-C IRD LUKOPR BacMtr >=36h	120
PLATELETS	EA157	Yes	Apheresis PLATELETS	Apheresis PLATELETS ACD-A>PAS-C/XX/20-24C Irradiated ResLeu:<5E6 1st container <3E11 plts Bacterial monitoring >=36h	PLT AFR ACD-A>PAS-C IRD LUKOPR 1C BacMtr >=36h	120
PLATELETS	EA158	Yes	Apheresis PLATELETS	Apheresis PLATELETS ACD-A>PAS-C/XX/20-24C Irradiated ResLeu:<5E6 2nd container <3E11 plts Bacterial monitoring >=36h	PLT AFR ACD-A>PAS-C IRD LUKOPR 2C BacMtr >=36h	120
PLATELETS	EA159	Yes	Apheresis PLATELETS	Apheresis PLATELETS ACD-A>PAS-C/XX/20-24C Irradiated ResLeu:<5E6 3rd container <3E11 plts Bacterial monitoring >=36h	PLT AFR ACD-A>PAS-C IRD LUKOPR 3C BacMtr >=36h	120
PLATELETS	EA344	Yes	Apheresis PLATELETS	Apheresis PLATELETS ACD-A>PAS-C/XX/20-24C Open Irradiated ResLeu:<5E6 Plasma reduced/Saline added Psoralen-treated	PLT AFR ACD-A>PAS-C OPN IRD LUKOPR PLS Red/SAL Add Psoraln	4
PLATELETS	EA345	Yes	Apheresis PLATELETS	Apheresis PLATELETS ACD-A>PAS-C/XX/20-24C Open Irradiated ResLeu:<5E6 Plasma reduced/Saline added 1st container Psoralen-treated	PLT AFR ACD-A>PAS-C OPN IRD LUKOPR PLS Red/SAL Add 1C Psoraln	4

Component	Product Code	Modifiable	Product Type	Long Name	Short Name	Maximum Storage Hours
PLATELETS	EA346	Yes	Apheresis PLATELETS	Apheresis PLATELETS ACD-A>PAS-C/XX/20-24C Open Irradiated ResLeu:<5E6 Plasma reduced/Saline added 2nd container Psoralen-treated	PLT AFR ACD-A>PAS-C OPN IRD LUKOPR PLS Red/SAL Add 2C Psoraln	4
PLATELETS	EA347	Yes	Apheresis PLATELETS	Apheresis PLATELETS ACD-A>PAS-C/XX/20-24C Open Irradiated ResLeu:<5E6 Plasma reduced/Saline added 3rd container Psoralen-treated	PLT AFR ACD-A>PAS-C OPN IRD LUKOPR PLS Red/SAL Add 3C Psoraln	4
PLATELETS	EA348	Yes	Apheresis PLATELETS	Apheresis PLATELETS ACD-A>PAS-C/XX/20-24C Open Irradiated ResLeu:<5E6 Plasma reduced/Saline added <3E11 plts Psoralen-treated	PLT AFR ACD-A>PAS-C OPN IRD LUKOPR PLS Red/SAL Add Psoraln	4
PLATELETS	EA349	Yes	Apheresis PLATELETS	Apheresis PLATELETS ACD-A/XX/20-24C Open Irradiated ResLeu:<5E6 Plasma reduced Psoralen-treated	PLT AFR ACD-A OPN IRD LUKOPR PLS Red Psoraln	4
PLATELETS	EA350	Yes	Apheresis PLATELETS	Apheresis PLATELETS ACD-A/XX/20-24C Open Irradiated ResLeu:<5E6 Plasma reduced 1st container Psoralen-treated	PLT AFR ACD-A OPN IRD LUKOPR PLS Red 1C Psoraln	4
PLATELETS	EA351	Yes	Apheresis PLATELETS	Apheresis PLATELETS ACD-A/XX/20-24C Open Irradiated ResLeu:<5E6 Plasma reduced 2nd container Psoralen-treated	PLT AFR ACD-A OPN IRD LUKOPR PLS Red 2C Psoraln	4
PLATELETS	EA352	Yes	Apheresis PLATELETS	Apheresis PLATELETS ACD-A/XX/20-24C Open Irradiated ResLeu:<5E6 Plasma reduced 3rd container Psoralen-treated	PLT AFR ACD-A OPN IRD LUKOPR PLS Red 3C Psoraln	4
PLATELETS	EA353	Yes	Apheresis PLATELETS	Apheresis PLATELETS ACD-A/XX/20-24C Open Irradiated ResLeu:<5E6 Plasma reduced <3E11 plts Psoralen-treated	PLT AFR ACD-A OPN IRD LUKOPR PLS Red Psoraln	4
FRESH FROZEN PLASMA	EA354	No	Apheresis FRESH FROZEN PLASMA	Apheresis FRESH FROZEN PLASMA NaCitrate/XX/<=-30C For mnf:injectable	FFP AFR NaCit MNFI	8760
FRESH FROZEN PLASMA	EA355	No	Apheresis FRESH FROZEN PLASMA	Apheresis FRESH FROZEN PLASMA NaCitrate/XX/<=-30C For mnf:injectable 1st container	FFP AFR NaCit MNFI 1C	8760
FRESH FROZEN PLASMA	EA356	No	Apheresis FRESH FROZEN PLASMA	Apheresis FRESH FROZEN PLASMA NaCitrate/XX/<=-30C For mnf:injectable 2nd container	FFP AFR NaCit MNFI 2C	8760
FRESH FROZEN PLASMA	EA357	Yes	Apheresis FRESH FROZEN PLASMA	Apheresis FRESH FROZEN PLASMA NaCitrate/XX/<=-25C Irradiated ResLeu:<1E6	FFP AFR NaCit IRD LUKOPR	8760
FRESH FROZEN PLASMA	EA358	Yes	Apheresis FRESH FROZEN PLASMA	Apheresis FRESH FROZEN PLASMA NaCitrate/XX/<=-25C Irradiated ResLeu:<1E6 1st container	FFP AFR NaCit IRD LUKOPR 1C	8760
FRESH FROZEN PLASMA	EA359	Yes	Apheresis FRESH FROZEN PLASMA	Apheresis FRESH FROZEN PLASMA NaCitrate/XX/<=-25C Irradiated ResLeu:<1E6 2nd container	FFP AFR NaCit IRD LUKOPR 2C	8760
FRESH FROZEN PLASMA	EA360	Yes	Apheresis FRESH FROZEN PLASMA	Apheresis FRESH FROZEN PLASMA NaCitrate/XX/<=-25C ResLeu:<1E6	FFP AFR NaCit LUKOPR	8760
FRESH FROZEN PLASMA	EA361	Yes	Apheresis FRESH FROZEN PLASMA	Apheresis FRESH FROZEN PLASMA NaCitrate/XX/<=-25C ResLeu:<1E6 1st container	FFP AFR NaCit LUKOPR 1C	8760
FRESH FROZEN PLASMA	EA362	Yes	Apheresis FRESH FROZEN PLASMA	Apheresis FRESH FROZEN PLASMA NaCitrate/XX/<=-25C ResLeu:<1E6 2nd container	FFP AFR NaCit LUKOPR 2C	8760
FRESH FROZEN PLASMA	EA363	No	Apheresis FRESH FROZEN PLASMA	Apheresis FRESH FROZEN PLASMA NaCitrate/XX/<=-25C For mnf:injectable ResLeu:<1E6 Frozen <=6h	FFP AFR NaCit MNFI LUKOPR	8760

Component	Product Code	Modifiable	Product Type	Long Name	Short Name	Maximum Storage Hours
FRESH FROZEN PLASMA	EA364	No	Apheresis FRESH FROZEN PLASMA	Apheresis FRESH FROZEN PLASMA NaCitrate/XX/<=-.25C For mnf:injectable ResLeu:<1E6 Frozen <=6h 1st container	FFP AFR NaCit MNFI LUKOPR 1C	8760
FRESH FROZEN PLASMA	EA365	No	Apheresis FRESH FROZEN PLASMA	Apheresis FRESH FROZEN PLASMA NaCitrate/XX/<=-.25C For mnf:injectable ResLeu:<1E6 Frozen <=6h 2nd container	FFP AFR NaCit MNFI LUKOPR 2C	8760
FRESH FROZEN PLASMA	EA366	No	Apheresis FRESH FROZEN PLASMA	Apheresis FRESH FROZEN PLASMA NaCitrate/XX/<=-.30C For mnf:noninjectable ResLeu:<1E6	FFP AFR NaCit MNFNI LUKOPR	8760
FRESH FROZEN PLASMA	EA367	No	Apheresis FRESH FROZEN PLASMA	Apheresis FRESH FROZEN PLASMA NaCitrate/XX/<=-.30C For mnf:noninjectable ResLeu:<1E6 1st container	FFP AFR NaCit MNFNI LUKOPR 1C	8760
FRESH FROZEN PLASMA	EA368	No	Apheresis FRESH FROZEN PLASMA	Apheresis FRESH FROZEN PLASMA NaCitrate/XX/<=-.30C For mnf:noninjectable ResLeu:<1E6 2nd container	FFP AFR NaCit MNFNI LUKOPR 2C	8760
FRESH FROZEN PLASMA	EA369	No	Thawed Apheresis FRESH FROZEN PLASMA	Thawed Apheresis FRESH FROZEN PLASMA NaCitrate/XX/refg For mnf:injectable	FFP AFR Thaw NaCit MNFI	24
FRESH FROZEN PLASMA	EA370	No	Thawed Apheresis FRESH FROZEN PLASMA	Thawed Apheresis FRESH FROZEN PLASMA NaCitrate/XX/refg For mnf:injectable 1st container	FFP AFR Thaw NaCit MNFI 1C	24
FRESH FROZEN PLASMA	EA371	No	Thawed Apheresis FRESH FROZEN PLASMA	Thawed Apheresis FRESH FROZEN PLASMA NaCitrate/XX/refg For mnf:injectable 2nd container	FFP AFR Thaw NaCit MNFI 2C	24
FRESH FROZEN PLASMA	EA372	No	Thawed Apheresis FRESH FROZEN PLASMA	Thawed Apheresis FRESH FROZEN PLASMA NaCitrate/XX/refg For mnf:injectable ResLeu:<1E6	FFP AFR Thaw NaCit MNFI LUKOPR	24
FRESH FROZEN PLASMA	EA373	No	Thawed Apheresis FRESH FROZEN PLASMA	Thawed Apheresis FRESH FROZEN PLASMA NaCitrate/XX/refg For mnf:injectable ResLeu:<1E6 1st container	FFP AFR Thaw NaCit MNFI LUKOPR 1C	24
FRESH FROZEN PLASMA	EA374	No	Thawed Apheresis FRESH FROZEN PLASMA	Thawed Apheresis FRESH FROZEN PLASMA NaCitrate/XX/refg For mnf:injectable ResLeu:<1E6 2nd container	FFP AFR Thaw NaCit MNFI LUKOPR 2C	24
FRESH FROZEN PLASMA	EA375	Yes	Thawed Apheresis FRESH FROZEN PLASMA	Thawed Apheresis FRESH FROZEN PLASMA NaCitrate/XX/refg Irradiated ResLeu:<1E6	FFP AFR Thaw NaCit IRD LUKOPR	24
FRESH FROZEN PLASMA	EA376	Yes	Thawed Apheresis FRESH FROZEN PLASMA	Thawed Apheresis FRESH FROZEN PLASMA NaCitrate/XX/refg Irradiated ResLeu:<1E6 1st container	FFP AFR Thaw NaCit IRD LUKOPR 1C	24
FRESH FROZEN PLASMA	EA377	Yes	Thawed Apheresis FRESH FROZEN PLASMA	Thawed Apheresis FRESH FROZEN PLASMA NaCitrate/XX/refg Irradiated ResLeu:<1E6 2nd container	FFP AFR Thaw NaCit IRD LUKOPR 2C	24
FRESH FROZEN PLASMA	EA378	Yes	Thawed Apheresis FRESH FROZEN PLASMA	Thawed Apheresis FRESH FROZEN PLASMA NaCitrate/XX/refg ResLeu:<1E6 Frozen <=6h	FFP AFR Thaw NaCit LUKOPR	24
FRESH FROZEN PLASMA	EA379	Yes	Thawed Apheresis FRESH FROZEN PLASMA	Thawed Apheresis FRESH FROZEN PLASMA NaCitrate/XX/refg ResLeu:<1E6 Frozen <=6h 1st container	FFP AFR Thaw NaCit LUKOPR 1C	24

Component	Product Code	Modifiable	Product Type	Long Name	Short Name	Maximum Storage Hours
FRESH FROZEN PLASMA	EA380	Yes	Thawed Apheresis FRESH FROZEN PLASMA	Thawed Apheresis FRESH FROZEN PLASMA NaCitrate/XX/refg ResLeu:<1E6 Frozen <=6h 2nd container	FFP AFR Thaw NaCit LUKOPR 2C	24
FRESH FROZEN PLASMA	EA381	Yes	Thawed Apheresis FRESH FROZEN PLASMA	Thawed Apheresis FRESH FROZEN PLASMA NaCitrate/XX/refg Irradiated ResLeu:<1E6 Frozen <=6h	FFP AFR Thaw NaCit IRD LUKOPR	24
FRESH FROZEN PLASMA	EA382	Yes	Thawed Apheresis FRESH FROZEN PLASMA	Thawed Apheresis FRESH FROZEN PLASMA NaCitrate/XX/refg Irradiated ResLeu:<1E6 Frozen <=6h 1st container	FFP AFR Thaw NaCit IRD LUKOPR 1C	24
FRESH FROZEN PLASMA	EA383	Yes	Thawed Apheresis FRESH FROZEN PLASMA	Thawed Apheresis FRESH FROZEN PLASMA NaCitrate/XX/refg Irradiated ResLeu:<1E6 Frozen <=6h 2nd container	FFP AFR Thaw NaCit IRD LUKOPR 2C	24
FRESH FROZEN PLASMA	EA384	Yes	Liquid PLASMA	Liquid PLASMA NaCitrate/XX/refg Irradiated ResLeu:<1E6	PLASMA Liq NaCit IRD LUKOPR	624
FRESH FROZEN PLASMA	EA385	Yes	Liquid PLASMA	Liquid PLASMA NaCitrate/XX/refg Irradiated ResLeu:<1E6 1st container	PLASMA Liq NaCit IRD LUKOPR 1C	624
FRESH FROZEN PLASMA	EA386	Yes	Liquid PLASMA	Liquid PLASMA NaCitrate/XX/refg Irradiated ResLeu:<1E6 2nd container	PLASMA Liq NaCit IRD LUKOPR 2C	624
FRESH FROZEN PLASMA	EA387	Yes	FRESH FROZEN PLASMA	FRESH FROZEN PLASMA CPD/XX/<=-25C Frozen <=18h Methylene blue-treated	FFP CPD Methyl Blue	8760
PLATELETS	EA392	Yes	Apheresis PLATELETS	Apheresis PLATELETS ACD-A>PAS-C/XX/20-24C Open Irradiated ResLeu:<5E6 Plasma reduced <3E11 plts Psoralen-treated	PLT AFR ACD-A>PAS-C OPN IRD LUKOPR PLS Red Psoraln	4
PLATELETS	EA395	Yes	Frozen Apheresis POOLED PLATELETS	Frozen Apheresis POOLED PLATELETS DMSO/XX/<=-65C Irradiated ResLeu:<5E6 Plasma reduced	PLT Pool AFR Froz DMSO IRD LUKOPR PLS Red	8760
PLATELETS	EA396	Yes	Thawed Apheresis POOLED PLATELETS	Thawed Apheresis POOLED PLATELETS DMSO/XX/20-24C Irradiated ResLeu:<5E6 Plasma reduced	PLT Pool AFR Thaw DMSO IRD LUKOPR PLS Red	4
RED BLOOD CELLS	EA397	No	RED BLOOD CELLS	RED BLOOD CELLS SAGM/450mL/refg Irradiated ResLeu:<1E6 Plasma reduced Hct 0.70-0.85	RBC SAGM IRD LUKOPR PLS Red Hct 0.70-0.85	672
RED BLOOD CELLS	EA398	No	RED BLOOD CELLS	RED BLOOD CELLS PAGGS-M/450mL/refg Irradiated ResLeu:<1E6 Plasma reduced Hct 0.70-0.85	RBC PAGGS-M IRD LUKOPR PLS Red Hct 0.70-0.85	672

This is the last page of *VistA Blood Establishment Computer Software (VBECS) 2.3.2 Rev G Release Notes*.