



VistA Blood Establishment Computer Software (VBECS) 2.3.3 Rev B

Release Notes Version 1.0

Department of Veterans Affairs
Enterprise Project Management Office

Revision History

Date	Revision	Description	Author
4/14/22	1.0	VBECS 2.3.3 Rev B Initial version	BBM Team

Table of Contents

- REVISION HISTORY I**
- INTRODUCTION..... 1**
- CHANGED FEATURES AND FUNCTIONS..... 1**
 - UNTESTABLE SYSTEM-LEVEL MAINTENANCE CHANGES 1
 - VISTA SOFTWARE DEPENDENCIES 1
 - VBECS USER DOCUMENTS 2
- CUSTOMER SUPPORT 4**
 - REFERENCES 4
 - VBECS SHAREPOINT SITE 4
- INSTALLATION QUALIFICATION (IQ) DOCUMENTATION..... 5**
- VALIDATION PLANNING 6**
- TABLE 1: UPDATES BY OPTION..... 7**
- TABLE 2: NEW BLOOD PRODUCTS..... 8**
- TABLE 3: COLD-STORED PLATELETS WITH EXTENDED MAXIMUM STORAGE TIME..24**

Introduction

VistA Blood Establishment Computer Software (VBECS) 2.3.3 Rev B Release Notes contains information for changes and corrections made to VBECS in the 2.3.3 Rev B patch.

Perform a local evaluation and risk assessment of the changes to determine the requirements for local validation of the changes, including documentation of the assessment activities. See *Validation Planning*.

Changed Features and Functions

This revision letter patch release is centrally focused around providing additional blood product updates released from International Council for Commonality in Blood Banking Automation, Inc. (ICCBBA). Blood products contained in ICCBBA releases 7.45.0 through 7.57.0 are included. In addition to that the VBECS 2.3.3 Rev B patch includes a change to Maximum Storage Time for cold-stored platelets and changes to Donation Types from ISBT Standard Technical Specification v. 6.0.0 and v. 6.0.1.

Table 1: Updates by Option provides a complete list of included changes. For a full list of new product codes see **Table 2: New Blood Products**. For a list of cold-stored platelets that have an extended storage time refer to **Table 3: Cold-Stored Platelets with Extended Maximum Storage Time**.

Untestable System-Level Maintenance Changes

- None

VistA Software Dependencies

- VBEC*2*11 information patch only.

VBECS User Documents

The following is a list of all the VBECS user documents that apply to the VBECS 2.3.3 Rev B patch release. The **Updated** column identifies the documents that have been updated with this VBECS 2.3.3 Rev B patch release.

These user documents are available from the VBECS SharePoint site at REDACTED.

User Document	Version	Updated
<i>VBECS 2.3.3 User Guide</i>	2.0	Yes
<i>VBECS 2.3.3 Admin User Guide</i>	1.0	No
<i>VBECS 2.3.3 Known Defects and Anomalies</i>	3.0	Yes
<i>VBECS 2.3.3 Technical Manual-Security Guide</i>	3.0	Yes
<i>VBECS - Echo Interface Configuration and Setup Guide</i>	5.0	No
<i>VBECS - Erytra Interface Configuration and Setup Guide</i>	2.0	No
<i>VBECS - ProVue Interface Configuration and Setup Guide</i>	5.0	No
<i>VBECS - Vision Interface Configuration and Setup Guide</i>	4.0	No

The following is a list of all the VBECS FAQ documents that apply to the VBECS 2.3.3 Rev B patch release. The **Updated** column identifies the documents that have been updated with this VBECS 2.3.3 Rev B patch release.

These FAQ documents are available from the VA SharePoint site at REDACTED.

FAQ Document	Version	Updated
<i>FAQ ABO Subgroup Interpretations</i>	11/22/16	No
<i>FAQ Ancillary VistA Validation</i>	11/28/17	No
<i>FAQ Antibodies with No Antigen Negative Requirement</i>	10/15/14	No
<i>FAQ Blood Product Table Processes</i>	03/28/19	No
<i>FAQ CAP Comprehensive Transfusions Medicine Crossmatch Survey</i>	11/22/16	No
<i>FAQ Compound Antibodies</i>	02/27/13	No
<i>FAQ CPRS VBECS Order Details</i>	04/01/09	No
<i>FAQ Database Conversion Oddballs</i>	09/15/09	No
<i>FAQ Documenting Unhandled Exceptions</i>	05/21/07	No
<i>FAQ Handling ABO Incompatible Transfusion Situations</i>	09/23/14	No
<i>FAQ How to File a New Service Request for Changes to VBECS</i>	12/08/16	No
<i>FAQ How to take faster screen shots from Remote Desktop Session</i>	12/17/14	No
<i>FAQ Identifying a Comparable Blood Product Code</i>	09/03/21	No
<i>FAQ Local Facilities</i>	06/12/20	No
<i>FAQ Modification Target Not Available</i>	11/28/17	No
<i>FAQ Multidivisional QC Rack Workaround</i>	11/28/17	No
<i>FAQ Order Status Clarification</i>	11/15/17	No
<i>FAQ Polyspecific AHG Not Used for Testing</i>	01/29/10	No
<i>FAQ Proper Use of PIV Card with VBECS</i>	09/14/21	No
<i>FAQ QC Setup</i>	01/29/10	No
<i>FAQ Retesting QC</i>	11/01/11	No
<i>FAQ Retrieving an Expired Order</i>	12/07/17	No
<i>FAQ The Difference Between Transfusion Only and Full Service Facility Types</i>	02/08/10	No
<i>FAQ VBECS Blood Product Hierarchy</i>	03/28/19	No
<i>FAQ VBECS Computer Crossmatch Decision Tree</i>	02/08/12	No
<i>FAQ Weak D Policy</i>	01/11/10	No
<i>FAQ Workload Assignments Single vs Batch Processing</i>	07/01/20	No

Customer Support

Contact your **Local/Regional** Office of Information Technology (OIT) or Laboratory Information Manager (LIM) if you encounter VistA or CPRS connection problems and for training support **before** contacting the Service Desk (SD).



Please ensure local/regional VistA Support contact information is available at all times.

If you experience an FDA reportable adverse event (patient death or serious injury) that VBECS may have caused or contributed to, contact the Service Desk directly to enter a ticket for Blood Bank software support.

If the problem remains unresolved after local VistA triage, call the Service Desk (below) and specify the Enterprise Application be set as VBECS (VistA Blood Establishment Computer Software)

Service Desk Contact

REDACTED

For troubleshooting error messages in VBECS that read "Contact Your System Administrator", contact the Service Desk for VBECS Server support.

References

- *ISBT128 Standard Technical Specification v 6.1.0*
- *ISBT 128 Standard Terminology for Medical Products of Human Origin, v 7.57*

VBECS SharePoint Site

The VBECS SharePoint site provides a location for additional information related to the VBECS application such as FAQs, installation status, remote desktop and report share shortcuts, and release history.

REDACTED

Installation Qualification (IQ) Documentation

Test Account Upgrade to VBECS 2.3.3 Revision B	
Required Patch Installation	VistA Patch: None Server Patch: VBECS 2.3.3 Revision B
Installation Process for VBECS 2.3.3 Rev B	Installed by the BBM team, all sites will be installed in one day. The date of installation will be communicated through a ListServ announcement.
Expected Downtime	None
Installation Communication for VBECS 2.3.3 Rev B	The planned completion time for all test installs will be provided on the VBECS SharePoint site.
Site Responsibility	<ul style="list-style-type: none"> • Join VBECS-L message board on ListServ, if needed. • Communicate any changes to your site supervisor and Point of Contact (POC) since the last patch install to the BBM team to the email group “VA OIT BBM Team”.
Site Record of Patch Installation	Sites should take and save a screenshot of the VBECS Help, About window after the Test installation is performed. This displays the VBECS updated version information.

Production Account Upgrade to VBECS 2.3.3 Revision B	
Required Patch Installation	VistA Patch: None Server Patch: VBECS 2.3.3 Revision B
Installation Process for VBECS 2.3.3 Rev B	Installed by the BBM team, all sites will be installed in one day. The date of installation will be communicated through a ListServ announcement.
Expected Downtime	You will be able to use VBECS during the patch installation. VBECS installation on your production account only lasts a few minutes and is invisible to users. If you encounter any disruption or errors while viewing or printing reports during the installation, try again after a few minutes.
Installation Communication for VBECS 2.3.3 Rev B	The status of production installs will be provided on the VBECS SharePoint site.
Site Responsibility	<ul style="list-style-type: none"> • Perform local validation, training, and set-up requirements prior to Production installation. • Join VBECS-L message board on ListServ, if needed. • Communicate any changes to your site supervisor and Point of Contact (POC) since the last patch install to the BBM team to the email group “VA OIT BBM Team”.
Site Record of Patch Installation	Sites should take and save a screenshot of the VBECS Help, About window after Production installation is performed. This displays the VBECS updated version information.

Validation Planning

The following is a flowchart to help assess changes for validation planning.

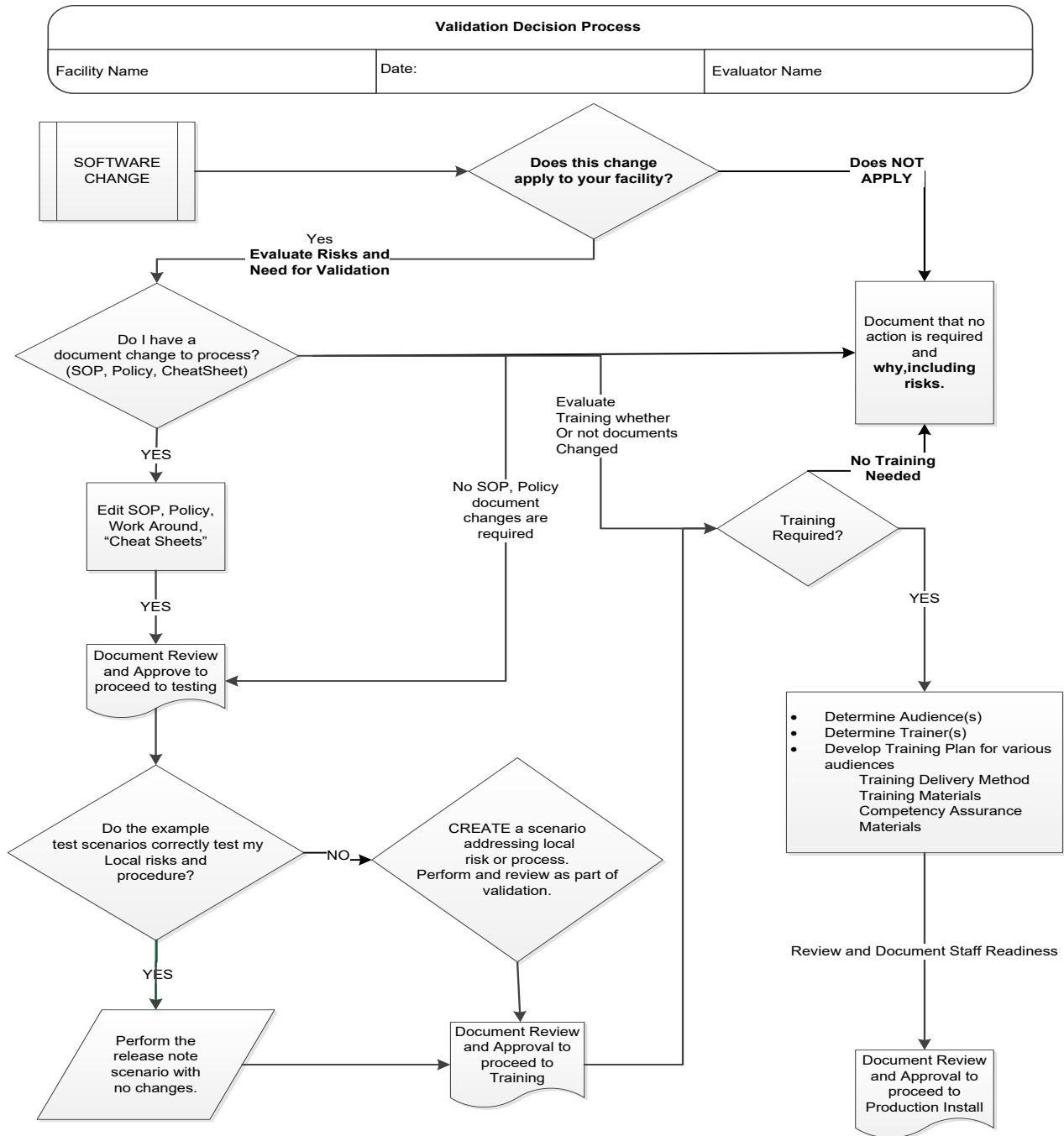


Table 1: Updates by Option

ID	Option	Problem Summary	Change Summary	Validation Scenario	Change applies to my facility. (Y/N)	Local risk Assessment (Low, Med, High)	SOP revision required. If yes, identify it.	Staff training needed. (Y/N)	Scenarios or validation must be performed. (Y/N)
1	New Blood Products	Update blood product table with new ICCBBA blood product codes from version 7.45.0 - 7.57.0.	New blood products were added to VBECS. For a full list of new product codes see Table 2. The list of all possible modifications for new blood products can be found on the VBECS SharePoint Site.	Validate only blood products that you may receive from your supplier. Use Tools, Blood Products to associate the blood products with an active facility.					
2	Updated Blood Products	Extend Maximum Storage Time for cold-stored platelets to 14 days.	Maximum Storage Times for cold-stored platelets were extended to 14 days. For a full list of affected products see Table 3.	Validate only blood products that you may receive from your supplier. Use Tools, Blood Products to verify that their Maximum Storage Time is now 14 days.					
3	Donation Types	Add new Donation Types.	The following new Donation Types were added: 7: For allogeneic use 8: For autologous use. Contains allogeneic material. B: Directed/Dedicated/Designated Use Only H: Directed/Dedicated/Designated/Biohazardous J: Directed/Dedicated/Designated/Elgb for Crossover G: For Emergency Use Only	No validation is required					

Table 2: New Blood Products

Component	Product Code	Modifiable	Product Type	Long Name	Short Name	Maximum Storage Hours
PLATELETS	EA399	Yes	Apheresis PLATELETS	Apheresis PLATELETS ACD-A/XX/20-24C Open Irradiated ResLeu:<5E6 1st container <3E11 plts Psoralen-treated	PLT AFR ACD-A OPN IRD LUKOPR 1C Psoraln	4
PLATELETS	EA400	Yes	Apheresis PLATELETS	Apheresis PLATELETS ACD-A/XX/20-24C Open Irradiated ResLeu:<5E6 2nd container <3E11 plts Psoralen-treated	PLT AFR ACD-A OPN IRD LUKOPR 2C Psoraln	4
PLATELETS	EA401	Yes	Apheresis PLATELETS	Apheresis PLATELETS ACD-A/XX/20-24C Open Irradiated ResLeu:<5E6 3rd container <3E11 plts Psoralen-treated	PLT AFR ACD-A OPN IRD LUKOPR 3C Psoraln	4
PLATELETS	EA402	Yes	Apheresis PLATELETS	Apheresis PLATELETS ACD-A>PAS-C/XX/20-24C Open ResLeu:<5E6 1st container <3E11 plts Psoralen-treated	PLT AFR ACD-A>PAS-C OPN LUKOPR 1C Psoraln	4
PLATELETS	EA403	Yes	Apheresis PLATELETS	Apheresis PLATELETS ACD-A>PAS-C/XX/20-24C Open ResLeu:<5E6 2nd container <3E11 plts Psoralen-treated	PLT AFR ACD-A>PAS-C OPN LUKOPR 2C Psoraln	4
PLATELETS	EA404	Yes	Apheresis PLATELETS	Apheresis PLATELETS ACD-A>PAS-C/XX/20-24C Open ResLeu:<5E6 3rd container <3E11 plts Psoralen-treated	PLT AFR ACD-A>PAS-C OPN LUKOPR 3C Psoraln	4
PLATELETS	EA405	Yes	Apheresis PLATELETS	Apheresis PLATELETS ACD-A>PAS-C/XX/20-24C Open Irradiated ResLeu:<5E6 1st container <3E11 plts Psoralen-treated	PLT AFR ACD-A>PAS-C OPN IRD LUKOPR 1C Psoraln	4
PLATELETS	EA406	Yes	Apheresis PLATELETS	Apheresis PLATELETS ACD-A>PAS-C/XX/20-24C Open Irradiated ResLeu:<5E6 2nd container <3E11 plts Psoralen-treated	PLT AFR ACD-A>PAS-C OPN IRD LUKOPR 2C Psoraln	4
PLATELETS	EA407	Yes	Apheresis PLATELETS	Apheresis PLATELETS ACD-A>PAS-C/XX/20-24C Open Irradiated ResLeu:<5E6 3rd container <3E11 plts Psoralen-treated	PLT AFR ACD-A>PAS-C OPN IRD LUKOPR 3C Psoraln	4
PLATELETS	EA408	Yes	POOLED PLATELETS	POOLED PLATELETS CP2D/XX/20-24C Irradiated ResLeu:<5E6 Bacterial monitoring >=24h	PLT Pool CP2D IRD LUKOPR BacMtr >=24h	120
PLATELETS	EA409	Yes	POOLED PLATELETS	POOLED PLATELETS CP2D/XX/20-24C Irradiated ResLeu:<5E6 Bacterial monitoring >=36h	PLT Pool CP2D IRD LUKOPR BacMtr >=36h	120
PLATELETS	EA410	Yes	Apheresis PLATELETS	Apheresis PLATELETS ACD-A/XX/20-24C Irradiated ResLeu:<5E6 1st container <3E11 plts Bacterial test D4	PLT AFR ACD-A IRD LUKOPR 1C BacTest D4	24
PLATELETS	EA411	Yes	Apheresis PLATELETS	Apheresis PLATELETS ACD-A/XX/20-24C Irradiated ResLeu:<5E6 2nd container <3E11 plts Bacterial test D4	PLT AFR ACD-A IRD LUKOPR 2C BacTest D4	24
PLATELETS	EA412	Yes	Apheresis PLATELETS	Apheresis PLATELETS ACD-A/XX/20-24C Irradiated ResLeu:<5E6 3rd container <3E11 plts Bacterial test D4	PLT AFR ACD-A IRD LUKOPR 3C BacTest D4	24
PLATELETS	EA413	Yes	Apheresis PLATELETS	Apheresis PLATELETS ACD-A/XX/20-24C Irradiated ResLeu:<5E6 1st container <3E11 plts Bacterial test D5	PLT AFR ACD-A IRD LUKOPR 1C BacTest D5	24

Component	Product Code	Modifiable	Product Type	Long Name	Short Name	Maximum Storage Hours
PLATELETS	EA414	Yes	Apheresis PLATELETS	Apheresis PLATELETS ACD-A/XX/20-24C Irradiated ResLeu:<5E6 2nd container <3E11 plts Bacterial test D5	PLT AFR ACD-A IRD LUKOPR 2C BacTest D5	24
PLATELETS	EA415	Yes	Apheresis PLATELETS	Apheresis PLATELETS ACD-A/XX/20-24C Irradiated ResLeu:<5E6 3rd container <3E11 plts Bacterial test D5	PLT AFR ACD-A IRD LUKOPR 3C BacTest D5	24
PLATELETS	EA416	Yes	Apheresis PLATELETS	Apheresis PLATELETS ACD-A/XX/20-24C Irradiated ResLeu:<5E6 1st container <3E11 plts Bacterial test D6	PLT AFR ACD-A IRD LUKOPR 1C BacTest D6	24
PLATELETS	EA417	Yes	Apheresis PLATELETS	Apheresis PLATELETS ACD-A/XX/20-24C Irradiated ResLeu:<5E6 2nd container <3E11 plts Bacterial test D6	PLT AFR ACD-A IRD LUKOPR 2C BacTest D6	24
PLATELETS	EA418	Yes	Apheresis PLATELETS	Apheresis PLATELETS ACD-A/XX/20-24C Irradiated ResLeu:<5E6 3rd container <3E11 plts Bacterial test D6	PLT AFR ACD-A IRD LUKOPR 3C BacTest D6	24
PLATELETS	EA419	Yes	Apheresis PLATELETS	Apheresis PLATELETS ACD-A/XX/20-24C Irradiated ResLeu:<5E6 1st container <3E11 plts Bacterial test D7	PLT AFR ACD-A IRD LUKOPR 1C BacTest D7	24
PLATELETS	EA420	Yes	Apheresis PLATELETS	Apheresis PLATELETS ACD-A/XX/20-24C Irradiated ResLeu:<5E6 2nd container <3E11 plts Bacterial test D7	PLT AFR ACD-A IRD LUKOPR 2C BacTest D7	24
PLATELETS	EA421	Yes	Apheresis PLATELETS	Apheresis PLATELETS ACD-A/XX/20-24C Irradiated ResLeu:<5E6 3rd container <3E11 plts Bacterial test D7	PLT AFR ACD-A IRD LUKOPR 3C BacTest D7	24
PLATELETS	EA422	Yes	Apheresis PLATELETS	Apheresis PLATELETS ACD-A/XX/20-24C ResLeu:<5E6 1st container <3E11 plts Bacterial test D4	PLT AFR ACD-A LUKOPR 1C BacTest D4	24
PLATELETS	EA423	Yes	Apheresis PLATELETS	Apheresis PLATELETS ACD-A/XX/20-24C ResLeu:<5E6 2nd container <3E11 plts Bacterial test D4	PLT AFR ACD-A LUKOPR 2C BacTest D4	24
PLATELETS	EA424	Yes	Apheresis PLATELETS	Apheresis PLATELETS ACD-A/XX/20-24C ResLeu:<5E6 3rd container <3E11 plts Bacterial test D4	PLT AFR ACD-A LUKOPR 3C BacTest D4	24
PLATELETS	EA425	Yes	Apheresis PLATELETS	Apheresis PLATELETS ACD-A/XX/20-24C ResLeu:<5E6 1st container <3E11 plts Bacterial test D5	PLT AFR ACD-A LUKOPR 1C BacTest D5	24
PLATELETS	EA426	Yes	Apheresis PLATELETS	Apheresis PLATELETS ACD-A/XX/20-24C ResLeu:<5E6 2nd container <3E11 plts Bacterial test D5	PLT AFR ACD-A LUKOPR 2C BacTest D5	24
PLATELETS	EA427	Yes	Apheresis PLATELETS	Apheresis PLATELETS ACD-A/XX/20-24C ResLeu:<5E6 3rd container <3E11 plts Bacterial test D5	PLT AFR ACD-A LUKOPR 3C BacTest D5	24
PLATELETS	EA428	Yes	Apheresis PLATELETS	Apheresis PLATELETS ACD-A/XX/20-24C ResLeu:<5E6 1st container <3E11 plts Bacterial test D6	PLT AFR ACD-A LUKOPR 1C BacTest D6	24
PLATELETS	EA429	Yes	Apheresis PLATELETS	Apheresis PLATELETS ACD-A/XX/20-24C ResLeu:<5E6 2nd container <3E11 plts Bacterial test D6	PLT AFR ACD-A LUKOPR 2C BacTest D6	24
PLATELETS	EA430	Yes	Apheresis PLATELETS	Apheresis PLATELETS ACD-A/XX/20-24C ResLeu:<5E6 3rd container <3E11 plts Bacterial test D6	PLT AFR ACD-A LUKOPR 3C BacTest D6	24
PLATELETS	EA431	Yes	Apheresis PLATELETS	Apheresis PLATELETS ACD-A/XX/20-24C ResLeu:<5E6 1st container <3E11 plts Bacterial test D7	PLT AFR ACD-A LUKOPR 1C BacTest D7	24

Component	Product Code	Modifiable	Product Type	Long Name	Short Name	Maximum Storage Hours
PLATELETS	EA432	Yes	Apheresis PLATELETS	Apheresis PLATELETS ACD-A/XX/20-24C ResLeu:<5E6 2nd container <3E11 plts Bacterial test D7	PLT AFR ACD-A LUKOPR 2C BacTest D7	24
PLATELETS	EA433	Yes	Apheresis PLATELETS	Apheresis PLATELETS ACD-A/XX/20-24C ResLeu:<5E6 3rd container <3E11 plts Bacterial test D7	PLT AFR ACD-A LUKOPR 3C BacTest D7	24
FRESH FROZEN PLASMA	EA434	No	POOLED CONVALESCENT PLASMA	POOLED CONVALESCENT PLASMA 0.5 CPD/XX/<=-18C Irradiated Pathogen reduced: Method NS COVID-19	PLASMA Conv Pool 0.5 CPD IRD PatRed M NS COVID-19	8760
FRESH FROZEN PLASMA	EA435	Yes	FRESH FROZEN PLASMA	FRESH FROZEN PLASMA CPD/XX/<=-18C Riboflavin-treated	FFP CPD Ribo	8760
FRESH FROZEN PLASMA	EA436	Yes	Apheresis FRESH FROZEN PLASMA	Apheresis FRESH FROZEN PLASMA ACD-A/XX/<=-18C 1st container Riboflavin-treated	FFP AFR ACD-A 1C Ribo	8760
FRESH FROZEN PLASMA	EA437	Yes	Apheresis FRESH FROZEN PLASMA	Apheresis FRESH FROZEN PLASMA ACD-A/XX/<=-18C 2nd container Riboflavin-treated	FFP AFR ACD-A 2C Ribo	8760
FRESH FROZEN PLASMA	EA438	Yes	Apheresis FRESH FROZEN PLASMA	Apheresis FRESH FROZEN PLASMA ACD-A/XX/<=-18C 3rd container Riboflavin-treated	FFP AFR ACD-A 3C Ribo	8760
PLATELETS	EA439	No	POOLED PLATELETS	POOLED PLATELETS CPD>PAS-E/XX/20-24C ResLeu:<5E6 Buffy coat plts prep Psoralen-treated	PLT Pool CPD>PAS-E LUKOPR BUFCT Psoraln	120
FRESH FROZEN PLASMA	EA440	Yes	Thawed CONVALESCENT PLASMA	Thawed CONVALESCENT PLASMA CPDA-1/XX/refg Irradiated COVID-19	PLASMA Conv Thaw CPDA-1 IRD COVID-19	120
RED BLOOD CELLS	EA441	Yes	RED BLOOD CELLS	RED BLOOD CELLS CPD>AS5/500mL/refg Irradiated ResLeu:<5E6 Plasma added	RBC CPD>AS5 IRD LUKOPR PA	672
PLATELETS	EA442	Yes	Apheresis PLATELETS	Apheresis PLATELETS ACD-A>PAS-C/XX/20-24C Open ResLeu:<5E6 Plasma reduced <3E11 plts	PLT AFR ACD-A>PAS-C OPN LUKOPR PLS Red	4
WHOLE BLOOD	EA443	Yes	WHOLE BLOOD	WHOLE BLOOD CPD/500mL/refg ResLeu:<1E6	WB CPD LUKOPR	504
PLATELETS	EA444	Yes	Apheresis PLATELETS	Apheresis PLATELETS ACD-A>PAS-C/XX/20-24C ResLeu:<5E6 Supernat reduced Psoralen-treated	PLT AFR ACD-A>PAS-C LUKOPR SUPRed Psoraln	120
PLATELETS	EA445	Yes	Apheresis PLATELETS	Apheresis PLATELETS ACD-A>PAS-C/XX/20-24C ResLeu:<5E6 Supernat reduced 1st container Psoralen-treated	PLT AFR ACD-A>PAS-C LUKOPR SUPRed 1C Psoraln	120
PLATELETS	EA446	Yes	Apheresis PLATELETS	Apheresis PLATELETS ACD-A>PAS-C/XX/20-24C ResLeu:<5E6 Supernat reduced 2nd container Psoralen-treated	PLT AFR ACD-A>PAS-C LUKOPR SUPRed 2C Psoraln	120
PLATELETS	EA447	Yes	Apheresis PLATELETS	Apheresis PLATELETS ACD-A>PAS-C/XX/20-24C ResLeu:<5E6 Supernat reduced 3rd container Psoralen-treated	PLT AFR ACD-A>PAS-C LUKOPR SUPRed 3C Psoraln	120
FRESH FROZEN PLASMA	EA448	Yes	POOLED PLASMA	POOLED PLASMA CPD/XX/<=-25C Frozen <=6h	PLASMA Pool CPD	8760
FRESH FROZEN PLASMA	EA449	No	POOLED PLASMA	POOLED PLASMA CPD/XX/<=-25C For mnf:injectable Frozen <=24h	PLASMA Pool CPD MNFI	8760
FRESH FROZEN PLASMA	EA450	Yes	CONVALESCENT PLASMA	CONVALESCENT PLASMA NS/XX/<=-18C COVID-19 high titer	PLASMA Conv NS COVID-19 high titer	8760
FRESH FROZEN PLASMA	EA451	Yes	CONVALESCENT PLASMA	CONVALESCENT PLASMA NS/XX/<=-18C COVID-19 low titer	PLASMA Conv NS COVID-19 low titer	8760

Component	Product Code	Modifiable	Product Type	Long Name	Short Name	Maximum Storage Hours
FRESH FROZEN PLASMA	EA452	Yes	Apheresis CONVALESCENT PLASMA	Apheresis CONVALESCENT PLASMA CPD/XX/<=-18C COVID-19 high titer	PLASMA AFR Conv CPD COVID-19 high titer	8760
FRESH FROZEN PLASMA	EA453	Yes	Apheresis CONVALESCENT PLASMA	Apheresis CONVALESCENT PLASMA CPD/XX/<=-18C COVID-19 low titer	PLASMA AFR Conv CPD COVID-19 low titer	8760
FRESH FROZEN PLASMA	EA454	Yes	CONVALESCENT PLASMA	CONVALESCENT PLASMA CP2D/XX/<=-18C Cryo reduced COVID-19	PLASMA Conv CP2D CRYORed COVID-19	8760
FRESH FROZEN PLASMA	EA455	Yes	CONVALESCENT PLASMA	CONVALESCENT PLASMA CP2D/XX/<=-18C Cryo reduced COVID-19 high titer	PLASMA Conv CP2D CRYORed COVID-19 high titer	8760
FRESH FROZEN PLASMA	EA456	Yes	CONVALESCENT PLASMA	CONVALESCENT PLASMA CP2D/XX/<=-18C Cryo reduced COVID-19 low titer	PLASMA Conv CP2D CRYORed COVID-19 low titer	8760
FRESH FROZEN PLASMA	EA457	Yes	Thawed CONVALESCENT PLASMA	Thawed CONVALESCENT PLASMA CP2D/XX/refg Cryo reduced COVID-19	PLASMA Conv Thaw CP2D CRYORed COVID-19	120
FRESH FROZEN PLASMA	EA458	Yes	Thawed CONVALESCENT PLASMA	Thawed CONVALESCENT PLASMA CP2D/XX/refg Cryo reduced COVID-19 high titer	PLASMA Conv Thaw CP2D CRYORed COVID-19 high titer	120
FRESH FROZEN PLASMA	EA459	Yes	Thawed CONVALESCENT PLASMA	Thawed CONVALESCENT PLASMA CP2D/XX/refg Cryo reduced COVID-19 low titer	PLASMA Conv Thaw CP2D CRYORed COVID-19 low titer	120
FRESH FROZEN PLASMA	EA460	Yes	CONVALESCENT PLASMA	CONVALESCENT PLASMA CPD/XX/<=-18C Cryo reduced COVID-19	PLASMA Conv CPD CRYORed COVID-19	8760
FRESH FROZEN PLASMA	EA461	Yes	CONVALESCENT PLASMA	CONVALESCENT PLASMA CPD/XX/<=-18C Cryo reduced COVID-19 high titer	PLASMA Conv CPD CRYORed COVID-19 high titer	8760
FRESH FROZEN PLASMA	EA462	Yes	CONVALESCENT PLASMA	CONVALESCENT PLASMA CPD/XX/<=-18C Cryo reduced COVID-19 low titer	PLASMA Conv CPD CRYORed COVID-19 low titer	8760
FRESH FROZEN PLASMA	EA463	Yes	Thawed CONVALESCENT PLASMA	Thawed CONVALESCENT PLASMA CPD/XX/refg Cryo reduced COVID-19	PLASMA Conv Thaw CPD CRYORed COVID-19	120
FRESH FROZEN PLASMA	EA464	Yes	Thawed CONVALESCENT PLASMA	Thawed CONVALESCENT PLASMA CPD/XX/refg Cryo reduced COVID-19 high titer	PLASMA Conv Thaw CPD CRYORed COVID-19 high titer	120
FRESH FROZEN PLASMA	EA465	Yes	Thawed CONVALESCENT PLASMA	Thawed CONVALESCENT PLASMA CPD/XX/refg Cryo reduced COVID-19 low titer	PLASMA Conv Thaw CPD CRYORed COVID-19 low titer	120
FRESH FROZEN PLASMA	EA466	Yes	Apheresis FRESH FROZEN PLASMA	Apheresis FRESH FROZEN PLASMA NaCitrate/XX/<=-25C Methylene blue-treated	FFP AFR NaCit Methyl Blue	8760
FRESH FROZEN PLASMA	EA467	Yes	Thawed Apheresis CONVALESCENT PLASMA	Thawed Apheresis CONVALESCENT PLASMA NaCitrate/XX/refg Methylene blue-treated COVID-19 low titer	PLASMA Conv AFR Thaw NaCit Methyl Blue COVID-19 low titer	120
FRESH FROZEN PLASMA	EA468	Yes	Thawed Apheresis CONVALESCENT PLASMA	Thawed Apheresis CONVALESCENT PLASMA NaCitrate/XX/refg Methylene blue-treated COVID-19 high titer	PLASMA Conv AFR Thaw NaCit Methyl Blue COVID-19 high titer	120
FRESH FROZEN PLASMA	EA469	Yes	Thawed Apheresis CONVALESCENT PLASMA	Thawed Apheresis CONVALESCENT PLASMA NaCitrate/XX/refg Methylene blue-treated COVID-19	PLASMA Conv AFR Thaw NaCit Methyl Blue COVID-19	120
RED BLOOD CELLS	EA470	No	RED BLOOD CELLS	RED BLOOD CELLS SAGM/450mL/refg ResLeu:<1E6 Supernat reduced	RBC SAGM LUKOPR SUPRed	1008
PLATELETS	EA471	Yes	POOLED PLATELETS	POOLED PLATELETS PAS-C/XX/20-24C From 5 donors	PLT Pool PAS-C 5DNR	120
FRESH FROZEN PLASMA	EA472	No	Apheresis IMMUNE PLASMA	Apheresis IMMUNE PLASMA CPD/XX/<=-25C For mnf:injectable Rabies	PLASMA AFR Imm CPD MNFI Rabies	8760

Component	Product Code	Modifiable	Product Type	Long Name	Short Name	Maximum Storage Hours
PLATELETS	EA473	Yes	Apheresis PLATELETS	Apheresis PLATELETS ACD-A>PAS-C/XX/20-24C Open ResLeu:<5E6 1st container <3E11 plts	PLT AFR ACD-A>PAS-C OPN LUKOPR 1C	4
PLATELETS	EA474	Yes	Apheresis PLATELETS	Apheresis PLATELETS ACD-A>PAS-C/XX/20-24C Open ResLeu:<5E6 2nd container <3E11 plts	PLT AFR ACD-A>PAS-C OPN LUKOPR 2C	4
PLATELETS	EA475	Yes	Apheresis PLATELETS	Apheresis PLATELETS ACD-A>PAS-C/XX/20-24C Open ResLeu:<5E6 3rd container <3E11 plts	PLT AFR ACD-A>PAS-C OPN LUKOPR 3C	4
PLATELETS	EA476	Yes	Apheresis PLATELETS	Apheresis PLATELETS ACD-A>PAS-C/XX/20-24C Open Irradiated ResLeu:<5E6 1st container <3E11 plts	PLT AFR ACD-A>PAS-C OPN IRD LUKOPR 1C	4
PLATELETS	EA477	Yes	Apheresis PLATELETS	Apheresis PLATELETS ACD-A>PAS-C/XX/20-24C Open Irradiated ResLeu:<5E6 2nd container <3E11 plts	PLT AFR ACD-A>PAS-C OPN IRD LUKOPR 2C	4
PLATELETS	EA478	Yes	Apheresis PLATELETS	Apheresis PLATELETS ACD-A>PAS-C/XX/20-24C Open Irradiated ResLeu:<5E6 3rd container <3E11 plts	PLT AFR ACD-A>PAS-C OPN IRD LUKOPR 3C	4
PLATELETS	EA479	Yes	Apheresis PLATELETS	Apheresis PLATELETS ACD-A/XX/20-24C ResLeu:<5E6 4th container Bacterial monitoring >=36h	PLT AFR ACD-A LUKOPR 4C BacMtr >=36h	120
PLATELETS	EA480	Yes	Apheresis PLATELETS	Apheresis PLATELETS ACD-A/XX/20-24C Irradiated ResLeu:<5E6 4th container Bacterial monitoring >=36h	PLT AFR ACD-A IRD LUKOPR 4C BacMtr >=36h	120
PLATELETS	EA481	Yes	Apheresis PLATELETS	Apheresis PLATELETS ACD-A/XX/20-24C ResLeu:<5E6 4th container <3E11 plts Bacterial monitoring >=36h	PLT AFR ACD-A LUKOPR 4C BacMtr >=36h	120
PLATELETS	EA482	Yes	Apheresis PLATELETS	Apheresis PLATELETS ACD-A/XX/20-24C Irradiated ResLeu:<5E6 4th container <3E11 plts Bacterial monitoring >=36h	PLT AFR ACD-A IRD LUKOPR 4C BacMtr >=36h	120
CRYOPRECIPITATE	EA483	Yes	Thawed POOLED CRYOPRECIPITATE	Thawed POOLED CRYOPRECIPITATE NS/XX/rt 5 units	CRYO Pool Thaw NS 5U	6
CRYOPRECIPITATE	EA484	Yes	Apheresis FIBRINOGEN COMPLEX	Apheresis FIBRINOGEN COMPLEX None/XX/<=18C Cryoprecipitated Ppsoralen-treated	COMP FIBRI AFR None CRYO Psoraln	8760
CRYOPRECIPITATE	EA485	Yes	Apheresis POOLED FIBRINOGEN COMPLEX	Apheresis POOLED FIBRINOGEN COMPLEX None/XX/<=18C Cryoprecipitated Ppsoralen-treated From 2 donors	COMP FIBRI Pool AFR None CRYO Psoraln 2DNR	8760
CRYOPRECIPITATE	EA486	Yes	Apheresis POOLED FIBRINOGEN COMPLEX	Apheresis POOLED FIBRINOGEN COMPLEX None/XX/<=18C Cryoprecipitated Ppsoralen-treated From 3 donors	COMP FIBRI Pool AFR None CRYO Psoraln 3DNR	8760
CRYOPRECIPITATE	EA487	Yes	Apheresis POOLED FIBRINOGEN COMPLEX	Apheresis POOLED FIBRINOGEN COMPLEX None/XX/<=18C Cryoprecipitated Ppsoralen-treated From 4 donors	COMP FIBRI Pool AFR None CRYO Psoraln 4DNR	8760
CRYOPRECIPITATE	EA488	Yes	Apheresis POOLED FIBRINOGEN COMPLEX	Apheresis POOLED FIBRINOGEN COMPLEX None/XX/<=18C Cryoprecipitated Ppsoralen-treated From 5 donors	COMP FIBRI Pool AFR None CRYO Psoraln 5DNR	8760
CRYOPRECIPITATE	EA489	Yes	POOLED FIBRINOGEN COMPLEX	POOLED FIBRINOGEN COMPLEX None/XX/<=18C Cryoprecipitated Ppsoralen-treated From 2 donors	COMP FIBRI Pool None CRYO Psoraln 2DNR	8760
CRYOPRECIPITATE	EA490	Yes	POOLED FIBRINOGEN COMPLEX	POOLED FIBRINOGEN COMPLEX None/XX/<=18C Cryoprecipitated Ppsoralen-treated From 4 donors	COMP FIBRI Pool None CRYO Psoraln 4DNR	8760
CRYOPRECIPITATE	EA491	Yes	POOLED FIBRINOGEN COMPLEX	POOLED FIBRINOGEN COMPLEX None/XX/<=18C Cryoprecipitated Ppsoralen-treated From 6 donors	COMP FIBRI Pool None CRYO Psoraln 6DNR	8760
CRYOPRECIPITATE	EA492	Yes	POOLED FIBRINOGEN COMPLEX	POOLED FIBRINOGEN COMPLEX None/XX/<=18C Cryoprecipitated Ppsoralen-treated From 8 donors	COMP FIBRI Pool None CRYO Psoraln 8DNR	8760
CRYOPRECIPITATE	EA493	Yes	POOLED FIBRINOGEN COMPLEX	POOLED FIBRINOGEN COMPLEX None/XX/<=18C Cryoprecipitated Ppsoralen-treated From 10 donors	COMP FIBRI Pool None CRYO Psoraln 10DNR	8760

Component	Product Code	Modifiable	Product Type	Long Name	Short Name	Maximum Storage Hours
CRYOPRECIPIT ATE	EA494	Yes	Thawed Apheresis FIBRINOGEN COMPLEX	Thawed Apheresis FIBRINOGEN COMPLEX None/XX/rt Cryoprecipitated Psoralen-treated	COMP FIBRI AFR Thaw None CRYO Psoraln	6
CRYOPRECIPIT ATE	EA495	Yes	Thawed POOLED FIBRINOGEN COMPLEX	Thawed POOLED FIBRINOGEN COMPLEX None/XX/rt Cryoprecipitated Psoralen-treated From 2 donors	COMP FIBRI Pool Thaw None CRYO Psoraln 2DNR	6
CRYOPRECIPIT ATE	EA496	Yes	Thawed POOLED FIBRINOGEN COMPLEX	Thawed POOLED FIBRINOGEN COMPLEX None/XX/rt Cryoprecipitated Psoralen-treated From 4 donors	COMP FIBRI Pool Thaw None CRYO Psoraln 4DNR	6
CRYOPRECIPIT ATE	EA497	Yes	Thawed POOLED FIBRINOGEN COMPLEX	Thawed POOLED FIBRINOGEN COMPLEX None/XX/rt Cryoprecipitated Psoralen-treated From 6 donors	COMP FIBRI Pool Thaw None CRYO Psoraln 6DNR	6
CRYOPRECIPIT ATE	EA498	Yes	Thawed POOLED FIBRINOGEN COMPLEX	Thawed POOLED FIBRINOGEN COMPLEX None/XX/rt Cryoprecipitated Psoralen-treated From 8 donors	COMP FIBRI Pool Thaw None CRYO Psoraln 8DNR	6
CRYOPRECIPIT ATE	EA499	Yes	Thawed POOLED FIBRINOGEN COMPLEX	Thawed POOLED FIBRINOGEN COMPLEX None/XX/rt Cryoprecipitated Psoralen-treated From 10 donors	COMP FIBRI Pool Thaw None CRYO Psoraln 10DNR	6
CRYOPRECIPIT ATE	EA500	Yes	Thawed Apheresis POOLED FIBRINOGEN COMPLEX	Thawed Apheresis POOLED FIBRINOGEN COMPLEX None/XX/rt Cryoprecipitated Psoralen-treated From 2 donors	COMP FIBRI Pool AFR Thaw None CRYO Psoraln 2DNR	6
CRYOPRECIPIT ATE	EA501	Yes	Thawed Apheresis POOLED FIBRINOGEN COMPLEX	Thawed Apheresis POOLED FIBRINOGEN COMPLEX None/XX/rt Cryoprecipitated Psoralen-treated From 3 donors	COMP FIBRI Pool AFR Thaw None CRYO Psoraln 3DNR	6
CRYOPRECIPIT ATE	EA502	Yes	Thawed Apheresis POOLED FIBRINOGEN COMPLEX	Thawed Apheresis POOLED FIBRINOGEN COMPLEX None/XX/rt Cryoprecipitated Psoralen-treated From 4 donors	COMP FIBRI Pool AFR Thaw None CRYO Psoraln 4DNR	6
CRYOPRECIPIT ATE	EA503	Yes	Thawed Apheresis POOLED FIBRINOGEN COMPLEX	Thawed Apheresis POOLED FIBRINOGEN COMPLEX None/XX/rt Cryoprecipitated Psoralen-treated From 5 donors	COMP FIBRI Pool AFR Thaw None CRYO Psoraln 5DNR	6
FRESH FROZEN PLASMA	EA504	Yes	Apheresis PLASMA	Apheresis PLASMA ACD-A/XX/<=-18C Cryo reduced Psoralen-treated	PLASMA AFR ACD-A CRYORed Psoraln	8760
FRESH FROZEN PLASMA	EA505	Yes	Apheresis PLASMA	Apheresis PLASMA ACD-A/XX/<=-18C Cryo reduced 1st container Psoralen-treated	PLASMA AFR ACD-A CRYORed 1C Psoraln	8760
FRESH FROZEN PLASMA	EA506	Yes	Apheresis PLASMA	Apheresis PLASMA ACD-A/XX/<=-18C Cryo reduced 2nd container Psoralen-treated	PLASMA AFR ACD-A CRYORed 2C Psoraln	8760
FRESH FROZEN PLASMA	EA507	Yes	Apheresis PLASMA	Apheresis PLASMA NaCitrate/XX/<=-18C Cryo reduced Psoralen-treated	PLASMA AFR NaCit CRYORed Psoraln	8760
FRESH FROZEN PLASMA	EA508	Yes	Apheresis PLASMA	Apheresis PLASMA NaCitrate/XX/<=-18C Cryo reduced 1st container Psoralen-treated	PLASMA AFR NaCit CRYORed 1C Psoraln	8760
FRESH FROZEN PLASMA	EA509	Yes	Apheresis PLASMA	Apheresis PLASMA NaCitrate/XX/<=-18C Cryo reduced 2nd container Psoralen-treated	PLASMA AFR NaCit CRYORed 2C Psoraln	8760
FRESH FROZEN PLASMA	EA510	Yes	POOLED PLASMA	POOLED PLASMA CPD/XX/<=-18C Cryo reduced Psoralen-treated From 2 donors	PLASMA Pool CPD CRYORed Psoraln 2DNR	8760
FRESH FROZEN PLASMA	EA511	Yes	POOLED PLASMA	POOLED PLASMA CPDA-1/XX/<=-18C Cryo reduced Psoralen-treated From 2 donors	PLASMA Pool CPDA-1 CRYORed Psoraln 2DNR	8760

Component	Product Code	Modifiable	Product Type	Long Name	Short Name	Maximum Storage Hours
FRESH FROZEN PLASMA	EA512	Yes	POOLED PLASMA	POOLED PLASMA CP2D/XX/<=-18C Cryo reduced Psoralen-treated From 2 donors	PLASMA Pool CP2D CRYORed Psoraln 2DNR	8760
FRESH FROZEN PLASMA	EA513	Yes	Thawed POOLED PLASMA	Thawed POOLED PLASMA CPD/XX/refg Cryo reduced Psoralen-treated From 2 donors	PLASMA Pool Thaw CPD CRYORed Psoraln 2DNR	24
FRESH FROZEN PLASMA	EA514	Yes	Thawed POOLED PLASMA	Thawed POOLED PLASMA CPDA-1/XX/refg Cryo reduced Psoralen-treated From 2 donors	PLASMA Pool Thaw CPDA-1 CRYORed Psoraln 2DNR	24
FRESH FROZEN PLASMA	EA515	Yes	Thawed POOLED PLASMA	Thawed POOLED PLASMA CP2D/XX/refg Cryo reduced Psoralen-treated From 2 donors	PLASMA Pool Thaw CP2D CRYORed Psoraln 2DNR	24
FRESH FROZEN PLASMA	EA516	Yes	Thawed Apheresis PLASMA	Thawed Apheresis PLASMA ACD-A/XX/refg Cryo reduced Psoralen-treated	PLASMA AFR Thaw ACD-A CRYORed Psoraln	120
FRESH FROZEN PLASMA	EA517	Yes	Thawed Apheresis PLASMA	Thawed Apheresis PLASMA ACD-A/XX/refg Cryo reduced 1st container Psoralen-treated	PLASMA AFR Thaw ACD-A CRYORed 1C Psoraln	120
FRESH FROZEN PLASMA	EA518	Yes	Thawed Apheresis PLASMA	Thawed Apheresis PLASMA ACD-A/XX/refg Cryo reduced 2nd container Psoralen-treated	PLASMA AFR Thaw ACD-A CRYORed 2C Psoraln	120
FRESH FROZEN PLASMA	EA519	Yes	Thawed Apheresis PLASMA	Thawed Apheresis PLASMA NaCitrate/XX/refg Cryo reduced Psoralen-treated	PLASMA AFR Thaw NaCit CRYORed Psoraln	120
FRESH FROZEN PLASMA	EA520	Yes	Thawed Apheresis PLASMA	Thawed Apheresis PLASMA NaCitrate/XX/refg Cryo reduced 1st container Psoralen-treated	PLASMA AFR Thaw NaCit CRYORed 1C Psoraln	120
FRESH FROZEN PLASMA	EA521	Yes	Thawed Apheresis PLASMA	Thawed Apheresis PLASMA NaCitrate/XX/refg Cryo reduced 2nd container Psoralen-treated	PLASMA AFR Thaw NaCit CRYORed 2C Psoraln	120
FRESH FROZEN PLASMA	EA522	Yes	FRESH FROZEN PLASMA	FRESH FROZEN PLASMA CPD/450mL/<=-25C Methylene blue-treated	FFP CPD Methyl Blue	8760
FRESH FROZEN PLASMA	EA523	Yes	Apheresis FRESH FROZEN PLASMA	Apheresis FRESH FROZEN PLASMA ACD-A/XX/<=-25C >=200mL<400mL Methylene blue-treated	FFP AFR ACD-A Methyl Blue	8760
PLATELETS	EA524	Yes	Apheresis PLATELETS	Apheresis PLATELETS ACD-A>PAS-C/XX/20-24C ResLeu:<5E6 1st container <3E11 plts Bacterial test D4	PLT AFR ACD-A>PAS-C LUKOPR 1C BacTest D4	24
PLATELETS	EA525	Yes	Apheresis PLATELETS	Apheresis PLATELETS ACD-A>PAS-C/XX/20-24C ResLeu:<5E6 2nd container <3E11 plts Bacterial test D4	PLT AFR ACD-A>PAS-C LUKOPR 2C BacTest D4	24
PLATELETS	EA526	Yes	Apheresis PLATELETS	Apheresis PLATELETS ACD-A>PAS-C/XX/20-24C ResLeu:<5E6 3rd container <3E11 plts Bacterial test D4	PLT AFR ACD-A>PAS-C LUKOPR 3C BacTest D4	24
PLATELETS	EA527	Yes	Apheresis PLATELETS	Apheresis PLATELETS ACD-A>PAS-C/XX/20-24C Irradiated ResLeu:<5E6 1st container <3E11 plts Bacterial test D4	PLT AFR ACD-A>PAS-C IRD LUKOPR 1C BacTest D4	24
PLATELETS	EA528	Yes	Apheresis PLATELETS	Apheresis PLATELETS ACD-A>PAS-C/XX/20-24C Irradiated ResLeu:<5E6 2nd container <3E11 plts Bacterial test D4	PLT AFR ACD-A>PAS-C IRD LUKOPR 2C BacTest D4	24
PLATELETS	EA529	Yes	Apheresis PLATELETS	Apheresis PLATELETS ACD-A>PAS-C/XX/20-24C Irradiated ResLeu:<5E6 3rd container <3E11 plts Bacterial test D4	PLT AFR ACD-A>PAS-C IRD LUKOPR 3C BacTest D4	24
PLATELETS	EA530	Yes	Apheresis PLATELETS	Apheresis PLATELETS ACD-A>PAS-C/XX/20-24C ResLeu:<5E6 1st container <3E11 plts Bacterial test D5	PLT AFR ACD-A>PAS-C LUKOPR 1C BacTest D5	24
PLATELETS	EA531	Yes	Apheresis PLATELETS	Apheresis PLATELETS ACD-A>PAS-C/XX/20-24C ResLeu:<5E6 2nd container <3E11 plts Bacterial test D5	PLT AFR ACD-A>PAS-C LUKOPR 2C BacTest D5	24
PLATELETS	EA532	Yes	Apheresis PLATELETS	Apheresis PLATELETS ACD-A>PAS-C/XX/20-24C ResLeu:<5E6 3rd container <3E11 plts Bacterial test D5	PLT AFR ACD-A>PAS-C LUKOPR 3C BacTest D5	24

Component	Product Code	Modifiable	Product Type	Long Name	Short Name	Maximum Storage Hours
PLATELETS	EA533	Yes	Apheresis PLATELETS	Apheresis PLATELETS ACD-A>PAS-C/XX/20-24C Irradiated ResLeu:<5E6 1st container <3E11 plts Bacterial test D5	PLT AFR ACD-A>PAS-C IRD LUKOPR 1C BacTest D5	24
PLATELETS	EA534	Yes	Apheresis PLATELETS	Apheresis PLATELETS ACD-A>PAS-C/XX/20-24C Irradiated ResLeu:<5E6 2nd container <3E11 plts Bacterial test D5	PLT AFR ACD-A>PAS-C IRD LUKOPR 2C BacTest D5	24
PLATELETS	EA535	Yes	Apheresis PLATELETS	Apheresis PLATELETS ACD-A>PAS-C/XX/20-24C Irradiated ResLeu:<5E6 3rd container <3E11 plts Bacterial test D5	PLT AFR ACD-A>PAS-C IRD LUKOPR 3C BacTest D5	24
FRESH FROZEN PLASMA	EA536	Yes	Thawed Apheresis PLASMA	Thawed Apheresis PLASMA ACD-A/XX/refg Open Irradiated 1st container	PLASMA AFR Thaw ACD-A OPN IRD 1C	24
FRESH FROZEN PLASMA	EA537	Yes	Thawed Apheresis PLASMA	Thawed Apheresis PLASMA ACD-A/XX/refg Open Irradiated 2nd container	PLASMA AFR Thaw ACD-A OPN IRD 2C	24
FRESH FROZEN PLASMA	EA538	Yes	Thawed Apheresis PLASMA	Thawed Apheresis PLASMA ACD-A/XX/refg Open Irradiated 3rd container	PLASMA AFR Thaw ACD-A OPN IRD 3C	24
FRESH FROZEN PLASMA	EA539	Yes	Thawed Apheresis PLASMA	Thawed Apheresis PLASMA ACD-A/XX/refg Open Irradiated 4th container	PLASMA AFR Thaw ACD-A OPN IRD 4C	24
FRESH FROZEN PLASMA	EA540	Yes	PLASMA	PLASMA CPD/450mL/<=-25C Cryo reduced Psoralen-treated	PLASMA CPD CRYORed Psoraln	8760
CRYOPRECIPITATE	EA541	Yes	CRYOPRECIPITATE	CRYOPRECIPITATE CPD/450mL/<=-25C Psoralen-treated	CRYO CPD Psoraln	8760
FRESH FROZEN PLASMA	EA542	Yes	FRESH FROZEN PLASMA	FRESH FROZEN PLASMA CPD/450mL/<=-25C Frozen <=72h	FFP CPD	8760
PLATELETS	EA543	Yes	Apheresis PLATELETS	Apheresis PLATELETS ACD-A/XX/20-24C Plasma reduced Psoralen-treated	PLT AFR ACD-A PLS Red Psoraln	120
PLATELETS	EA544	Yes	Apheresis PLATELETS	Apheresis PLATELETS ACD-A/XX/20-24C Plasma reduced 1st container Psoralen-treated	PLT AFR ACD-A PLS Red 1C Psoraln	120
PLATELETS	EA545	Yes	Apheresis PLATELETS	Apheresis PLATELETS ACD-A/XX/20-24C Plasma reduced 2nd container Psoralen-treated	PLT AFR ACD-A PLS Red 2C Psoraln	120
PLATELETS	EA546	Yes	Apheresis PLATELETS	Apheresis PLATELETS ACD-A/XX/20-24C Plasma reduced 3rd container Psoralen-treated	PLT AFR ACD-A PLS Red 3C Psoraln	120
PLATELETS	EA547	Yes	Apheresis PLATELETS	Apheresis PLATELETS ACD-A/XX/20-24C ResLeu:<5E6 Plasma reduced 3rd container <3E11 plts Psoralen-treated	PLT AFR ACD-A LUKOPR PLS Red 3C Psoraln	120
PLATELETS	EA548	Yes	Apheresis PLATELETS	Apheresis PLATELETS ACD-A/XX/20-24C Irradiated ResLeu:<5E6 Plasma reduced 1st container <3E11 plts Psoralen-treated	PLT AFR ACD-A IRD LUKOPR PLS Red 1C Psoraln	120
PLATELETS	EA549	Yes	Apheresis PLATELETS	Apheresis PLATELETS ACD-A/XX/20-24C Irradiated ResLeu:<5E6 Plasma reduced 2nd container <3E11 plts Psoralen-treated	PLT AFR ACD-A IRD LUKOPR PLS Red 2C Psoraln	120
PLATELETS	EA550	Yes	Apheresis PLATELETS	Apheresis PLATELETS ACD-A/XX/20-24C Irradiated ResLeu:<5E6 Plasma reduced 3rd container <3E11 plts Psoralen-treated	PLT AFR ACD-A IRD LUKOPR PLS Red 3C Psoraln	120
PLATELETS	EA551	Yes	POOLED PLATELETS	POOLED PLATELETS CPD/XX/20-24C Irradiated ResLeu:<5E6 Bacterial monitoring >=24h	PLT Pool CPD IRD LUKOPR BacMtr >=24h	120

Component	Product Code	Modifiable	Product Type	Long Name	Short Name	Maximum Storage Hours
PLATELETS	EA552	Yes	POOLED PLATELETS	POOLED PLATELETS CPD/XX/20-24C Irradiated ResLeu:<5E6 5 units Bacterial monitoring >=24h	PLT Pool CPD IRD LUKOPR 5U BacMtr >=24h	120
PLATELETS	EA553	Yes	POOLED PLATELETS	POOLED PLATELETS CPD/XX/20-24C Irradiated ResLeu:<5E6 Bacterial monitoring >=36h	PLT Pool CPD IRD LUKOPR BacMtr >=36h	120
PLATELETS	EA554	Yes	POOLED PLATELETS	POOLED PLATELETS CPD/XX/20-24C Irradiated ResLeu:<5E6 5 units Bacterial monitoring >=36h	PLT Pool CPD IRD LUKOPR 5U BacMtr >=36h	120
CRYOPRECIPITATE	EA555	Yes	Apheresis CRYOPRECIPITATE	Apheresis CRYOPRECIPITATE ACD-A/XX/<=-25C Methylene blue-treated	CRYO AFR ACD-A Methyl Blue	8760
CRYOPRECIPITATE	EA556	Yes	Apheresis CRYOPRECIPITATE	Apheresis CRYOPRECIPITATE NaCitrate/XX/<=-25C Methylene blue-treated	CRYO AFR NaCit Methyl Blue	8760
FRESH FROZEN PLASMA	EA557	Yes	Apheresis PLASMA	Apheresis PLASMA ACD-A/XX/<=-25C Cryo reduced Methylene blue-treated	PLASMA AFR ACD-A CRYO Red Methyl Blue	8760
FRESH FROZEN PLASMA	EA558	Yes	Apheresis PLASMA	Apheresis PLASMA NaCitrate/XX/<=-25C Cryo reduced Methylene blue-treated	PLASMA AFR NaCit CRYO Red Methyl Blue	8760
FRESH FROZEN PLASMA	EA559	Yes	Apheresis CONVALESCENT PLASMA	Apheresis CONVALESCENT PLASMA NaCitrate/XX/<=-18C 1st container COVID-19	PLASMA AFR Conv NaCit 1C COVID-19	8760
FRESH FROZEN PLASMA	EA560	Yes	Apheresis CONVALESCENT PLASMA	Apheresis CONVALESCENT PLASMA NaCitrate/XX/<=-18C 2nd container COVID-19	PLASMA AFR Conv NaCit 2C COVID-19	8760
FRESH FROZEN PLASMA	EA561	Yes	Apheresis CONVALESCENT PLASMA	Apheresis CONVALESCENT PLASMA NaCitrate/XX/<=-18C 3rd container COVID-19	PLASMA AFR Conv NaCit 3C COVID-19	8760
FRESH FROZEN PLASMA	EA562	Yes	Apheresis CONVALESCENT PLASMA	Apheresis CONVALESCENT PLASMA NaCitrate/XX/<=-18C 4th container COVID-19	PLASMA AFR Conv NaCit 4C COVID-19	8760
FRESH FROZEN PLASMA	EA563	Yes	Thawed Apheresis CONVALESCENT PLASMA	Thawed Apheresis CONVALESCENT PLASMA NaCitrate/XX/refg 1st container COVID-19	PLASMA Conv AFR Thaw NaCit 1C COVID-19	120
FRESH FROZEN PLASMA	EA564	Yes	Thawed Apheresis CONVALESCENT PLASMA	Thawed Apheresis CONVALESCENT PLASMA NaCitrate/XX/refg 2nd container COVID-19	PLASMA Conv AFR Thaw NaCit 2C COVID-19	120
FRESH FROZEN PLASMA	EA565	Yes	Thawed Apheresis CONVALESCENT PLASMA	Thawed Apheresis CONVALESCENT PLASMA NaCitrate/XX/refg 3rd container COVID-19	PLASMA Conv AFR Thaw NaCit 3C COVID-19	120
FRESH FROZEN PLASMA	EA566	Yes	Thawed Apheresis CONVALESCENT PLASMA	Thawed Apheresis CONVALESCENT PLASMA NaCitrate/XX/refg 4th container COVID-19	PLASMA Conv AFR Thaw NaCit 4C COVID-19	120
FRESH FROZEN PLASMA	EA567	Yes	Thawed Apheresis POOLED CONVALESCENT PLASMA	Thawed Apheresis POOLED CONVALESCENT PLASMA ACD-A/XX/refg Psoralen-treated From 2 donors COVID-19	PLASMA Conv Pool AFR Thaw ACD-A Psoraln 2DNR COVID-19	120
FRESH FROZEN PLASMA	EA568	Yes	Thawed Apheresis CONVALESCENT PLASMA	Thawed Apheresis CONVALESCENT PLASMA NaCitrate/XX/refg Irradiated COVID-19	PLASMA Conv AFR Thaw NaCit IRD COVID-19	120
FRESH FROZEN PLASMA	EA569	Yes	Thawed Apheresis CONVALESCENT PLASMA	Thawed Apheresis CONVALESCENT PLASMA NaCitrate/XX/refg Irradiated 1st container COVID-19	PLASMA Conv AFR Thaw NaCit IRD 1C COVID-19	120
FRESH FROZEN PLASMA	EA570	Yes	Thawed Apheresis CONVALESCENT PLASMA	Thawed Apheresis CONVALESCENT PLASMA NaCitrate/XX/refg Irradiated 2nd container COVID-19	PLASMA Conv AFR Thaw NaCit IRD 2C COVID-19	120
FRESH FROZEN PLASMA	EA571	Yes	Thawed Apheresis CONVALESCENT PLASMA	Thawed Apheresis CONVALESCENT PLASMA NaCitrate/XX/refg Irradiated 3rd container COVID-19	PLASMA Conv AFR Thaw NaCit IRD 3C COVID-19	120
FRESH FROZEN PLASMA	EA572	Yes	Thawed Apheresis CONVALESCENT PLASMA	Thawed Apheresis CONVALESCENT PLASMA NaCitrate/XX/refg Irradiated 4th container COVID-19	PLASMA Conv AFR Thaw NaCit IRD 4C COVID-19	120
FRESH FROZEN PLASMA	EA573	Yes	Thawed Apheresis CONVALESCENT PLASMA	Thawed Apheresis CONVALESCENT PLASMA NaCitrate/XX/refg Open COVID-19	PLASMA Conv AFR Thaw NaCit OPN COVID-19	24

Component	Product Code	Modifiable	Product Type	Long Name	Short Name	Maximum Storage Hours
FRESH FROZEN PLASMA	EA574	Yes	Thawed Apheresis CONVALESCENT PLASMA	Thawed Apheresis CONVALESCENT PLASMA NaCitrate/XX/refg Open 1st container COVID-19	PLASMA Conv AFR Thaw NaCit OPN 1C COVID-19	24
FRESH FROZEN PLASMA	EA575	Yes	Thawed Apheresis CONVALESCENT PLASMA	Thawed Apheresis CONVALESCENT PLASMA NaCitrate/XX/refg Open 2nd container COVID-19	PLASMA Conv AFR Thaw NaCit OPN 2C COVID-19	24
FRESH FROZEN PLASMA	EA576	Yes	Thawed Apheresis CONVALESCENT PLASMA	Thawed Apheresis CONVALESCENT PLASMA NaCitrate/XX/refg Open 3rd container COVID-19	PLASMA Conv AFR Thaw NaCit OPN 3C COVID-19	24
FRESH FROZEN PLASMA	EA577	Yes	Thawed Apheresis CONVALESCENT PLASMA	Thawed Apheresis CONVALESCENT PLASMA NaCitrate/XX/refg Open 4th container COVID-19	PLASMA Conv AFR Thaw NaCit OPN 4C COVID-19	24
FRESH FROZEN PLASMA	EA578	Yes	Thawed Apheresis CONVALESCENT PLASMA	Thawed Apheresis CONVALESCENT PLASMA NaCitrate/XX/refg Open Irradiated COVID-19	PLASMA Conv AFR Thaw NaCit OPN IRD COVID-19	24
FRESH FROZEN PLASMA	EA579	Yes	Thawed Apheresis CONVALESCENT PLASMA	Thawed Apheresis CONVALESCENT PLASMA NaCitrate/XX/refg Open Irradiated 1st container COVID-19	PLASMA Conv AFR Thaw NaCit OPN IRD 1C COVID-19	24
FRESH FROZEN PLASMA	EA580	Yes	Thawed Apheresis CONVALESCENT PLASMA	Thawed Apheresis CONVALESCENT PLASMA NaCitrate/XX/refg Open Irradiated 2nd container COVID-19	PLASMA Conv AFR Thaw NaCit OPN IRD 2C COVID-19	24
FRESH FROZEN PLASMA	EA581	Yes	Thawed Apheresis CONVALESCENT PLASMA	Thawed Apheresis CONVALESCENT PLASMA NaCitrate/XX/refg Open Irradiated 3rd container COVID-19	PLASMA Conv AFR Thaw NaCit OPN IRD 3C COVID-19	24
FRESH FROZEN PLASMA	EA582	Yes	Thawed Apheresis CONVALESCENT PLASMA	Thawed Apheresis CONVALESCENT PLASMA NaCitrate/XX/refg Open Irradiated 4th container COVID-19	PLASMA Conv AFR Thaw NaCit OPN IRD 4C COVID-19	24
PLATELETS	EA583	Yes	Washed Apheresis PLATELETS	Washed Apheresis PLATELETS None/XX/20-24C Open ResLeu:<5E6 3rd container <3E11 plts Psoralen-treated	PLT AFR Wash None OPN LUKOPR 3C Psoraln	4
PLATELETS	EA584	Yes	Apheresis PLATELETS	Apheresis PLATELETS ACD-A/XX/20-24C Open Irradiated ResLeu:<5E6 4th container <3E11 plts	PLT AFR ACD-A OPN IRD LUKOPR 4C	4
PLATELETS	EA585	Yes	Apheresis PLATELETS	Apheresis PLATELETS ACD-A>PAS-F/XX/20-24C Open Irradiated ResLeu:<5E6 1st container <3E11 plts	PLT AFR ACD-A>PAS-F OPN IRD LUKOPR 1C	4
PLATELETS	EA586	Yes	Apheresis PLATELETS	Apheresis PLATELETS ACD-A>PAS-F/XX/20-24C Open Irradiated ResLeu:<5E6 2nd container <3E11 plts	PLT AFR ACD-A>PAS-F OPN IRD LUKOPR 2C	4
PLATELETS	EA587	Yes	Apheresis PLATELETS	Apheresis PLATELETS ACD-A>PAS-F/XX/20-24C Open Irradiated ResLeu:<5E6 3rd container <3E11 plts	PLT AFR ACD-A>PAS-F OPN IRD LUKOPR 3C	4
FRESH FROZEN PLASMA	EA588	No	Thawed POOLED FRESH FROZEN PLASMA	Thawed POOLED FRESH FROZEN PLASMA CPD/XX/refg ResLeu:<1E6 Quar:>=90d/retested	FFP Pool Thaw CPD LUKOPR QUAR	24
FRESH FROZEN PLASMA	EA589	Yes	Thawed POOLED FRESH FROZEN PLASMA	Thawed POOLED FRESH FROZEN PLASMA CPD/XX/refg Methylene blue-treated	FFP Pool Thaw CPD Methyl Blue	24
FRESH FROZEN PLASMA	EA590	Yes	Thawed POOLED FRESH FROZEN PLASMA	Thawed POOLED FRESH FROZEN PLASMA CPD/XX/refg Riboflavin-treated	FFP Pool Thaw CPD Ribo	24
FRESH FROZEN PLASMA	EA591	No	Thawed Apheresis POOLED FRESH FROZEN PLASMA	Thawed Apheresis POOLED FRESH FROZEN PLASMA ACD-A/XX/refg ResLeu:<1E6 Quar:>=90d/retested	FFP AFR Pool Thaw ACD-A LUKOPR QUAR	24
FRESH FROZEN PLASMA	EA592	Yes	Thawed Apheresis POOLED FRESH FROZEN PLASMA	Thawed Apheresis POOLED FRESH FROZEN PLASMA ACD-A/XX/refg Methylene blue-treated	FFP AFR Pool Thaw ACD-A Methyl Blue	24
FRESH FROZEN PLASMA	EA593	Yes	Thawed Apheresis POOLED FRESH FROZEN PLASMA	Thawed Apheresis POOLED FRESH FROZEN PLASMA ACD-A/XX/refg Riboflavin-treated	FFP AFR Pool Thaw ACD-A Ribo	24

Component	Product Code	Modifiable	Product Type	Long Name	Short Name	Maximum Storage Hours
FRESH FROZEN PLASMA	EA594	No	CONVALESCENT PLASMA	CONVALESCENT PLASMA CPD/450mL/<=-25C Quar:>=90d/retested COVID-19	PLASMA Conv CPD QUAR COVID-19	8760
FRESH FROZEN PLASMA	EA595	No	CONVALESCENT PLASMA	CONVALESCENT PLASMA CPD/450mL/<=-25C ResLeu:<1E6 Quar:>=90d/retested COVID-19	PLASMA Conv CPD LUKOPR QUAR COVID-19	8760
FRESH FROZEN PLASMA	EA596	Yes	CONVALESCENT PLASMA	CONVALESCENT PLASMA CPD/450mL/<=-25C Riboflavin-treated COVID-19	PLASMA Conv CPD Ribo COVID-19	8760
FRESH FROZEN PLASMA	EA597	No	Liquid Apheresis PLASMA	Liquid Apheresis PLASMA ACD-A/XX/<37C For mnf:noninjectable 1st container	PLASMA AFR Liq ACD-A MNFNI 1C	120
RED BLOOD CELLS	EA598	Yes	Apheresis RED BLOOD CELLS	Apheresis RED BLOOD CELLS ACD-A>AS3/XX/refg Irradiated ResLeu:<5E6 Plasma added	RBC AFR ACD-A>AS3 IRD LUKOPR PA	672
RED BLOOD CELLS	EA599	Yes	Apheresis RED BLOOD CELLS	Apheresis RED BLOOD CELLS ACD-A>AS3/XX/refg Irradiated ResLeu:<5E6 Plasma added 1st container	RBC AFR ACD-A>AS3 IRD LUKOPR PA 1C	672
RED BLOOD CELLS	EA600	Yes	Apheresis RED BLOOD CELLS	Apheresis RED BLOOD CELLS ACD-A>AS3/XX/refg Irradiated ResLeu:<5E6 Plasma added 2nd container	RBC AFR ACD-A>AS3 IRD LUKOPR PA 2C	672
FRESH FROZEN PLASMA	EA601	Yes	Thawed Apheresis PLASMA	Thawed Apheresis PLASMA ACD-A/XX/refg RT<=24h frozen<=24h 5th container	PLASMA AFR Thaw ACD-A 5C	24
RED BLOOD CELLS	EA602	Yes	RED BLOOD CELLS	RED BLOOD CELLS CPD>AS1/XX/refg Open Irradiated ResLeu:<5E6 LowVol :anticoag not adj	RBC CPD>AS1 OPN IRD LUKOPR LowVol	24
CRYOPRECIPITATE	EA603	Yes	POOLED CRYOPRECIPITATE	POOLED CRYOPRECIPITATE CPD/XX/<=-18C	CRYO Pool CPD	8760
FRESH FROZEN PLASMA	EA604	Yes	CONVALESCENT PLASMA	CONVALESCENT PLASMA CPD/XX/<=-25C COVID-19 low titer	PLASMA Conv CPD COVID-19 low titer	8760
FRESH FROZEN PLASMA	EA605	Yes	CONVALESCENT PLASMA	CONVALESCENT PLASMA CPD/XX/<=-25C COVID-19 high titer	PLASMA Conv CPD COVID-19 high titer	8760
FRESH FROZEN PLASMA	EA606	Yes	CONVALESCENT PLASMA	CONVALESCENT PLASMA CPD/XX/<=-25C Riboflavin-treated COVID-19 low titer	PLASMA Conv CPD Ribo COVID-19 low titer	8760
FRESH FROZEN PLASMA	EA607	Yes	CONVALESCENT PLASMA	CONVALESCENT PLASMA CPD/XX/<=-25C Riboflavin-treated COVID-19 high titer	PLASMA Conv CPD Ribo COVID-19 high titer	8760
FRESH FROZEN PLASMA	EA608	Yes	Thawed CONVALESCENT PLASMA	Thawed CONVALESCENT PLASMA CPD/XX/refg Riboflavin-treated COVID-19 low titer	PLASMA Conv Thaw CPD Ribo COVID-19 low titer	120
FRESH FROZEN PLASMA	EA609	Yes	Thawed CONVALESCENT PLASMA	Thawed CONVALESCENT PLASMA CPD/XX/refg Riboflavin-treated COVID-19 high titer	PLASMA Conv Thaw CPD Ribo COVID-19 high titer	120
FRESH FROZEN PLASMA	EA610	Yes	CONVALESCENT PLASMA	CONVALESCENT PLASMA CPD/XX/<=-25C Methylene blue-treated COVID-19 low titer	PLASMA Conv CPD Methyl Blue COVID-19 low titer	8760
FRESH FROZEN PLASMA	EA611	Yes	CONVALESCENT PLASMA	CONVALESCENT PLASMA CPD/XX/<=-25C Methylene blue-treated COVID-19 high titer	PLASMA Conv CPD Methyl Blue COVID-19 high titer	8760
FRESH FROZEN PLASMA	EA612	Yes	Apheresis CONVALESCENT PLASMA	Apheresis CONVALESCENT PLASMA NaCitrate/XX/<=-25C COVID-19 low titer	PLASMA AFR Conv NaCit COVID-19 low titer	8760
FRESH FROZEN PLASMA	EA613	Yes	Apheresis CONVALESCENT PLASMA	Apheresis CONVALESCENT PLASMA NaCitrate/XX/<=-25C COVID-19 high titer	PLASMA AFR Conv NaCit COVID-19 high titer	8760
FRESH FROZEN PLASMA	EA614	Yes	Apheresis CONVALESCENT PLASMA	Apheresis CONVALESCENT PLASMA NaCitrate/XX/<=-25C Riboflavin-treated COVID-19 low titer	PLASMA AFR Conv NaCit Ribo COVID-19 low titer	8760

Component	Product Code	Modifiable	Product Type	Long Name	Short Name	Maximum Storage Hours
FRESH FROZEN PLASMA	EA615	Yes	Apheresis CONVALESCENT PLASMA	Apheresis CONVALESCENT PLASMA NaCitrate/XX/<=25C Riboflavin-treated COVID-19 high titer	PLASMA AFR Conv NaCit Ribo COVID-19 high titer	8760
FRESH FROZEN PLASMA	EA616	Yes	Apheresis CONVALESCENT PLASMA	Apheresis CONVALESCENT PLASMA NaCitrate/XX/<=25C Methylene blue-treated COVID-19 low titer	PLASMA AFR Conv NaCit Methyl Blue COVID-19 low titer	8760
FRESH FROZEN PLASMA	EA617	Yes	Apheresis CONVALESCENT PLASMA	Apheresis CONVALESCENT PLASMA NaCitrate/XX/<=25C Methylene blue-treated COVID-19 high titer	PLASMA AFR Conv NaCit Methyl Blue COVID-19 high titer	8760
FRESH FROZEN PLASMA	EA618	Yes	Apheresis CONVALESCENT PLASMA	Apheresis CONVALESCENT PLASMA ACD-A/XX/<=25C COVID-19 low titer	PLASMA AFR Conv ACD-A COVID-19 low titer	8760
FRESH FROZEN PLASMA	EA619	Yes	Apheresis CONVALESCENT PLASMA	Apheresis CONVALESCENT PLASMA ACD-A/XX/<=25C COVID-19 high titer	PLASMA AFR Conv ACD-A COVID-19 high titer	8760
FRESH FROZEN PLASMA	EA620	Yes	Apheresis CONVALESCENT PLASMA	Apheresis CONVALESCENT PLASMA ACD-A/XX/<=25C Riboflavin-treated COVID-19 low titer	PLASMA AFR Conv ACD-A Ribo COVID-19 low titer	8760
FRESH FROZEN PLASMA	EA621	Yes	Apheresis CONVALESCENT PLASMA	Apheresis CONVALESCENT PLASMA ACD-A/XX/<=25C Riboflavin-treated COVID-19 high titer	PLASMA AFR Conv ACD-A Ribo COVID-19 high titer	8760
FRESH FROZEN PLASMA	EA622	Yes	Apheresis CONVALESCENT PLASMA	Apheresis CONVALESCENT PLASMA ACD-A/XX/<=25C Psoralen-treated COVID-19 low titer	PLASMA AFR Conv ACD-A Psoraln COVID-19 low titer	8760
FRESH FROZEN PLASMA	EA623	Yes	Apheresis CONVALESCENT PLASMA	Apheresis CONVALESCENT PLASMA ACD-A/XX/<=25C Psoralen-treated COVID-19 high titer	PLASMA AFR Conv ACD-A Psoraln COVID-19 high titer	8760
FRESH FROZEN PLASMA	EA624	Yes	Apheresis CONVALESCENT PLASMA	Apheresis CONVALESCENT PLASMA ACD-A/XX/<=25C Methylene blue-treated COVID-19 low titer	PLASMA AFR Conv ACD-A Methyl Blue COVID-19 low titer	8760
FRESH FROZEN PLASMA	EA625	Yes	Apheresis CONVALESCENT PLASMA	Apheresis CONVALESCENT PLASMA ACD-A/XX/<=25C Methylene blue-treated COVID-19 high titer	PLASMA AFR Conv ACD-A Methyl Blue COVID-19 high titer	8760
FRESH FROZEN PLASMA	EA626	Yes	Thawed Apheresis CONVALESCENT PLASMA	Thawed Apheresis CONVALESCENT PLASMA ACD-A/XX/refg Methylene blue-treated COVID-19 low titer	PLASMA Conv AFR Thaw ACD-A Methyl Blue COVID-19 low titer	120
FRESH FROZEN PLASMA	EA627	Yes	Thawed Apheresis CONVALESCENT PLASMA	Thawed Apheresis CONVALESCENT PLASMA ACD-A/XX/refg Methylene blue-treated COVID-19 high titer	PLASMA Conv AFR Thaw ACD-A Methyl Blue COVID-19 high titer	120
FRESH FROZEN PLASMA	EA628	Yes	Thawed PLASMA	Thawed PLASMA CPD/XX/refg Methylene blue-treated	PLASMA Thaw CPD Methyl Blue	120
PLATELETS	EA629	Yes	Frozen POOLED PLATELETS	Frozen POOLED PLATELETS PAS-C/XX/<=18C Irradiated Buffy coat plts prep 5 units	PLT Pool Froz PAS-C IRD BUFCT 5U	8760
PLATELETS	EA630	No	Thawed PLATELET LYSATE	Thawed PLATELET LYSATE None/XX/20-24C Not for tx or mnf	PLT Lysed Thaw None NMT	1
PLATELETS	EA631	No	Thawed PLATELET LYSATE	Thawed PLATELET LYSATE None/XX/20-24C For mnf:injectable	PLT Lysed Thaw None MNFI	1
PLATELETS	EA632	Yes	Apheresis PLATELETS	Apheresis PLATELETS ACD-A>PAS-C/XX/20-24C Open ResLeu:<5E6 Plasma reduced Saline added <3E11 plts Psoralen-treated	PLT AFR ACD-A>PAS-C OPN LUKOPR PLS Red/SAL Add Psoraln	4
FRESH FROZEN PLASMA	EA633	No	Apheresis PLASMA	Apheresis PLASMA ACD-A/XX/<=18C For mnf:injectable Cryo reduced Psoralen-treated	PLASMA AFR ACD-A MNFI CRYORed Psoraln	8760
FRESH FROZEN PLASMA	EA634	No	Apheresis PLASMA	Apheresis PLASMA ACD-A/XX/<=18C For mnf:injectable Cryo reduced 1st container Psoralen-treated	PLASMA AFR ACD-A MNFI CRYORed 1C Psoraln	8760
FRESH FROZEN PLASMA	EA635	No	Apheresis PLASMA	Apheresis PLASMA ACD-A/XX/<=18C For mnf:injectable Cryo reduced 2nd container Psoralen-treated	PLASMA AFR ACD-A MNFI CRYORed 2C Psoraln	8760
FRESH FROZEN PLASMA	EA636	No	Apheresis PLASMA	Apheresis PLASMA NaCitrate/XX/<=18C For mnf:injectable Cryo reduced Psoralen-treated	PLASMA AFR NaCit MNFI CRYORed Psoraln	8760

Component	Product Code	Modifiable	Product Type	Long Name	Short Name	Maximum Storage Hours
FRESH FROZEN PLASMA	EA637	No	Apheresis PLASMA	Apheresis PLASMA NaCitrate/XX/<=-18C For mnf:injectable Cryo reduced 1st container Psoralen-treated	PLASMA AFR NaCit MNFI CRYORed 1C Psoraln	8760
FRESH FROZEN PLASMA	EA638	No	Apheresis PLASMA	Apheresis PLASMA NaCitrate/XX/<=-18C For mnf:injectable Cryo reduced 2nd container Psoralen-treated	PLASMA AFR NaCit MNFI CRYORed 2C Psoraln	8760
FRESH FROZEN PLASMA	EA639	No	POOLED PLASMA	POOLED PLASMA CPD/XX/<=-18C For mnf:injectable Cryo reduced Psoralen-treated From 2 donors	PLASMA Pool CPD MNFI CRYORed Psoraln 2DNR	8760
FRESH FROZEN PLASMA	EA640	No	POOLED PLASMA	POOLED PLASMA CPDA-1/XX/<=-18C For mnf:injectable Cryo reduced Psoralen-treated From 2 donors	PLASMA Pool CPDA-1 MNFI CRYORed Psoraln 2DNR	8760
FRESH FROZEN PLASMA	EA641	No	POOLED PLASMA	POOLED PLASMA CP2D/XX/<=-18C For mnf:injectable Cryo reduced Psoralen-treated From 2 donors	PLASMA Pool CP2D MNFI CRYORed Psoraln 2DNR	8760
FRESH FROZEN PLASMA	EA642	Yes	Apheresis FRESH FROZEN PLASMA	Apheresis FRESH FROZEN PLASMA ACD-A/XX/<=-25C ResLeu:<1E6 Frozen <=6h 1st container	FFP AFR ACD-A LUKOPR 1C	8760
FRESH FROZEN PLASMA	EA643	Yes	Apheresis FRESH FROZEN PLASMA	Apheresis FRESH FROZEN PLASMA ACD-A/XX/<=-25C ResLeu:<1E6 Frozen <=6h 2nd container	FFP AFR ACD-A LUKOPR 2C	8760
FRESH FROZEN PLASMA	EA644	Yes	Apheresis FRESH FROZEN PLASMA	Apheresis FRESH FROZEN PLASMA ACD-A/XX/<=-25C ResLeu:<1E6 Frozen <=6h 3rd container	FFP AFR ACD-A LUKOPR 3C	8760
FRESH FROZEN PLASMA	EA645	Yes	Thawed Apheresis FRESH FROZEN PLASMA	Thawed Apheresis FRESH FROZEN PLASMA ACD-A/XX/refg ResLeu:<1E6 Frozen <=6h 1st container	FFP AFR Thaw ACD-A LUKOPR 1C	24
FRESH FROZEN PLASMA	EA646	Yes	Thawed Apheresis FRESH FROZEN PLASMA	Thawed Apheresis FRESH FROZEN PLASMA ACD-A/XX/refg ResLeu:<1E6 Frozen <=6h 2nd container	FFP AFR Thaw ACD-A LUKOPR 2C	24
FRESH FROZEN PLASMA	EA647	Yes	Thawed Apheresis FRESH FROZEN PLASMA	Thawed Apheresis FRESH FROZEN PLASMA ACD-A/XX/refg ResLeu:<1E6 Frozen <=6h 3rd container	FFP AFR Thaw ACD-A LUKOPR 3C	24
FRESH FROZEN PLASMA	EA648	Yes	Thawed Apheresis FRESH FROZEN PLASMA	Thawed Apheresis FRESH FROZEN PLASMA ACD-A/XX/refg Irradiated ResLeu:<1E6 Frozen <=6h 1st container	FFP AFR Thaw ACD-A IRD LUKOPR 1C	24
FRESH FROZEN PLASMA	EA649	Yes	Thawed Apheresis FRESH FROZEN PLASMA	Thawed Apheresis FRESH FROZEN PLASMA ACD-A/XX/refg Irradiated ResLeu:<1E6 Frozen <=6h 2nd container	FFP AFR Thaw ACD-A IRD LUKOPR 2C	24
FRESH FROZEN PLASMA	EA650	Yes	Thawed Apheresis FRESH FROZEN PLASMA	Thawed Apheresis FRESH FROZEN PLASMA ACD-A/XX/refg Irradiated ResLeu:<1E6 Frozen <=6h 3rd container	FFP AFR Thaw ACD-A IRD LUKOPR 3C	24
FRESH FROZEN PLASMA	EA651	Yes	Apheresis FRESH FROZEN PLASMA	Apheresis FRESH FROZEN PLASMA ACD-A/XX/<=-25C ResLeu:<1E6 3rd container	FFP AFR ACD-A LUKOPR 3C	8760
FRESH FROZEN PLASMA	EA652	Yes	Thawed Apheresis FRESH FROZEN PLASMA	Thawed Apheresis FRESH FROZEN PLASMA ACD-A/XX/refg ResLeu:<1E6 3rd container	FFP AFR Thaw ACD-A LUKOPR 3C	24
FRESH FROZEN PLASMA	EA653	Yes	Thawed Apheresis FRESH FROZEN PLASMA	Thawed Apheresis FRESH FROZEN PLASMA ACD-A/XX/refg Irradiated ResLeu:<1E6 3rd container	FFP AFR Thaw ACD-A IRD LUKOPR 3C	24
FRESH FROZEN PLASMA	EA654	Yes	Thawed Apheresis PLASMA	Thawed Apheresis PLASMA ACD-A/XX/refg 1st container Psoralen-treated	PLASMA AFR Thaw ACD-A 1C Psoraln	120
FRESH FROZEN PLASMA	EA655	Yes	Thawed Apheresis PLASMA	Thawed Apheresis PLASMA ACD-A/XX/refg 2nd container Psoralen-treated	PLASMA AFR Thaw ACD-A 2C Psoraln	120
FRESH FROZEN PLASMA	EA656	Yes	Thawed Apheresis PLASMA	Thawed Apheresis PLASMA ACD-A/XX/refg 3rd container Psoralen-treated	PLASMA AFR Thaw ACD-A 3C Psoraln	120
PLATELETS	EA657	Yes	Apheresis PLATELETS	Apheresis PLATELETS ACD-A>PAS-C/XX/20-24C ResLeu:<5E6 Supernat reduced <3E11 plts Psoralen-treated	PLT AFR ACD-A>PAS-C LUKOPR SUPRed Psoraln	120
PLATELETS	EA658	No	Apheresis PLATELETS	Apheresis PLATELETS ACD-A>PAS-C/XX/20-24C For mnf:noninjectable	PLT AFR ACD-A>PAS-C MNFNI	120

Component	Product Code	Modifiable	Product Type	Long Name	Short Name	Maximum Storage Hours
PLATELETS	EA659	No	Apheresis PLATELETS	Apheresis PLATELETS ACD-A>PAS-C/XX/20-24C For mnf:noninjectable 1st container	PLT AFR ACD-A>PAS-C MNFNI 1C	120
PLATELETS	EA660	No	Apheresis PLATELETS	Apheresis PLATELETS ACD-A>PAS-C/XX/20-24C For mnf:noninjectable 2nd container	PLT AFR ACD-A>PAS-C MNFNI 2C	120
PLATELETS	EA661	No	Apheresis PLATELETS	Apheresis PLATELETS ACD-A>PAS-C/XX/20-24C For mnf:noninjectable 3rd container	PLT AFR ACD-A>PAS-C MNFNI 3C	120
PLATELETS	EA662	No	POOLED PLATELETS	POOLED PLATELETS PAS-E/XX/20-24C Irradiated ResLeu:<1E6 Plasma reduced Buffy coat plts prep 4 units	PLT Pool PAS-E IRD LUKOPR PLS Red BUFACT 4U	120
PLATELETS	EA663	No	POOLED PLATELETS	POOLED PLATELETS PAS-E/XX/20-24C Irradiated ResLeu:<1E6 Plasma reduced Buffy coat plts prep 5 units	PLT Pool PAS-E IRD LUKOPR PLS Red BUFACT 5U	120
FRESH FROZEN PLASMA	EA664	Yes	Apheresis FRESH FROZEN PLASMA	Apheresis FRESH FROZEN PLASMA ACD-A/XX/=<-.25C 1st container	FFP AFR ACD-A 1C	8760
FRESH FROZEN PLASMA	EA665	Yes	Apheresis FRESH FROZEN PLASMA	Apheresis FRESH FROZEN PLASMA ACD-A/XX/=<-.25C 2nd container	FFP AFR ACD-A 2C	8760
FRESH FROZEN PLASMA	EA666	Yes	Apheresis FRESH FROZEN PLASMA	Apheresis FRESH FROZEN PLASMA ACD-A/XX/=<-.25C 3rd container	FFP AFR ACD-A 3C	8760
PLATELETS	EA667	Yes	Apheresis PLATELETS	Apheresis PLATELETS ACD-A>PAS-C/XX/20-24C Open ResLeu:<5E6 Supernat reduced 1st container Psoralen-treated	PLT AFR ACD-A>PAS-C OPN LUKOPR SUPRed 1C Psoraln	4
PLATELETS	EA668	Yes	Apheresis PLATELETS	Apheresis PLATELETS ACD-A/XX/20-24C ResLeu:<5E6 Plasma reduced 3rd container <3E11 plts	PLT AFR ACD-A LUKOPR PLS Red 3C	120
PLATELETS	EA669	Yes	Apheresis PLATELETS	Apheresis PLATELETS ACD-A>PAS-C/XX/20-24C Open Irradiated ResLeu:<5E6 Supernat reduced 1st container <3E11 plts	PLT AFR ACD-A>PAS-C OPN IRD LUKOPR SUPRed 1C	4
PLATELETS	EA670	Yes	Apheresis PLATELETS	Apheresis PLATELETS ACD-A>PAS-C/XX/20-24C Open Irradiated ResLeu:<5E6 Supernat reduced 2nd container <3E11 plts	PLT AFR ACD-A>PAS-C OPN IRD LUKOPR SUPRed 2C	4
PLATELETS	EA671	Yes	Apheresis PLATELETS	Apheresis PLATELETS ACD-A>PAS-C/XX/20-24C Open Irradiated ResLeu:<5E6 Supernat reduced 3rd container <3E11 plts	PLT AFR ACD-A>PAS-C OPN IRD LUKOPR SUPRed 3C	4
PLATELETS	EA672	No	Apheresis PLATELETS	Apheresis PLATELETS PAS-E/XX/refg Irradiated	PLT AFR PAS-E IRD	336
PLATELETS	EA673	Yes	Apheresis PLATELETS	Apheresis PLATELETS ACD-A/XX/20-24C Open ResLeu:<5E6 4th container <3E11 plts	PLT AFR ACD-A OPN LUKOPR 4C	4
PLATELETS	EA674	Yes	Apheresis PLATELETS	Apheresis PLATELETS ACD-A>PAS-C/XX/20-24C Irradiated ResLeu:<5E6 Supernat reduced 1st container <3E11 plts	PLT AFR ACD-A>PAS-C IRD LUKOPR SUPRed 1C	120
PLATELETS	EA675	Yes	Apheresis PLATELETS	Apheresis PLATELETS ACD-A>PAS-C/XX/20-24C Irradiated ResLeu:<5E6 Supernat reduced 2nd container <3E11 plts	PLT AFR ACD-A>PAS-C IRD LUKOPR SUPRed 2C	120
PLATELETS	EA676	Yes	Apheresis PLATELETS	Apheresis PLATELETS ACD-A>PAS-C/XX/20-24C Irradiated ResLeu:<5E6 Supernat reduced 3rd container <3E11 plts	PLT AFR ACD-A>PAS-C IRD LUKOPR SUPRed 3C	120

Component	Product Code	Modifiable	Product Type	Long Name	Short Name	Maximum Storage Hours
PLATELETS	EA677	Yes	Apheresis PLATELETS	Apheresis PLATELETS ACD-A/XX/20-24C ResLeu:<5E6 Plasma reduced Saline added 1st container <3E11 plts Psoralen-treated	PLT AFR ACD-A LUKOPR PLS Red/SAL Add 1C Psoraln	120
PLATELETS	EA678	Yes	Apheresis PLATELETS	Apheresis PLATELETS ACD-A/XX/20-24C ResLeu:<5E6 Plasma reduced Saline added 2nd container <3E11 plts Psoralen-treated	PLT AFR ACD-A LUKOPR PLS Red/SAL Add 2C Psoraln	120
PLATELETS	EA679	Yes	Apheresis PLATELETS	Apheresis PLATELETS ACD-A/XX/20-24C ResLeu:<5E6 Plasma reduced Saline added 3rd container <3E11 plts Psoralen-treated	PLT AFR ACD-A LUKOPR PLS Red/SAL Add 3C Psoraln	120
PLATELETS	EA680	No	Apheresis PLATELETS	Apheresis PLATELETS PAS-B/XX/20-24C ResLeu:<5E6 1st container Riboflavin-treated	PLT AFR PAS-B LUKOPR 1C Ribo	120
PLATELETS	EA681	No	Apheresis PLATELETS	Apheresis PLATELETS PAS-B/XX/20-24C ResLeu:<5E6 2nd container Riboflavin-treated	PLT AFR PAS-B LUKOPR 2C Ribo	120
PLATELETS	EA682	No	POOLED PLATELETS	POOLED PLATELETS PAS-B/XX/20-24C ResLeu:<5E6 Riboflavin-treated	PLT Pool PAS-B LUKOPR Ribo	120
PLATELETS	EA683	Yes	Apheresis PLATELETS	Apheresis PLATELETS ACD-A/XX/20-24C ResLeu:<5E6 Plasma reduced Saline added 1st container	PLT AFR ACD-A LUKOPR PLS Red/SAL Add 1C	120
PLATELETS	EA684	Yes	Apheresis PLATELETS	Apheresis PLATELETS ACD-A/XX/20-24C ResLeu:<5E6 Plasma reduced Saline added 2nd container	PLT AFR ACD-A LUKOPR PLS Red/SAL Add 2C	120
PLATELETS	EA685	Yes	Apheresis PLATELETS	Apheresis PLATELETS ACD-A/XX/20-24C ResLeu:<5E6 Plasma reduced Saline added 3rd container	PLT AFR ACD-A LUKOPR PLS Red/SAL Add 3C	120
PLATELETS	EA686	Yes	Apheresis PLATELETS	Apheresis PLATELETS ACD-A>PAS-C/XX/20-24C ResLeu:<5E6 Plasma reduced 1st container <3E11 plts Psoralen-treated	PLT AFR ACD-A>PAS-C LUKOPR PLS Red 1C Psoraln	120
PLATELETS	EA687	Yes	Apheresis PLATELETS	Apheresis PLATELETS ACD-A>PAS-C/XX/20-24C ResLeu:<5E6 Plasma reduced 2nd container <3E11 plts Psoralen-treated	PLT AFR ACD-A>PAS-C LUKOPR PLS Red 2C Psoraln	120
PLATELETS	EA688	Yes	Apheresis PLATELETS	Apheresis PLATELETS ACD-A>PAS-C/XX/20-24C ResLeu:<5E6 Plasma reduced 3rd container <3E11 plts Psoralen-treated	PLT AFR ACD-A>PAS-C LUKOPR PLS Red 3C Psoraln	120
PLATELETS	EA689	Yes	Apheresis PLATELETS	Apheresis PLATELETS ACD-A>PAS-C/XX/20-24C ResLeu:<5E6 Plasma reduced Saline added 1st container <3E11 plts Psoralen-treated	PLT AFR ACD-A>PAS-C LUKOPR PLS Red/SAL Add 1C Psoraln	120
PLATELETS	EA690	Yes	Apheresis PLATELETS	Apheresis PLATELETS ACD-A>PAS-C/XX/20-24C ResLeu:<5E6 Plasma reduced Saline added 2nd container <3E11 plts Psoralen-treated	PLT AFR ACD-A>PAS-C LUKOPR PLS Red/SAL Add 2C Psoraln	120
PLATELETS	EA691	Yes	Apheresis PLATELETS	Apheresis PLATELETS ACD-A>PAS-C/XX/20-24C ResLeu:<5E6 Plasma reduced Saline added 3rd container <3E11 plts Psoralen-treated	PLT AFR ACD-A>PAS-C LUKOPR PLS Red/SAL Add 3C Psoraln	120
RED BLOOD CELLS	EA692	Yes	RED BLOOD CELLS	RED BLOOD CELLS CPD>AS1/500mL/refg ResLeu:<5E6 Supernat rem	RBC CPD>AS1 LUKOPR SR	1008
RED BLOOD CELLS	EA693	Yes	RED BLOOD CELLS	RED BLOOD CELLS CPD>AS1/500mL/refg Irradiated ResLeu:<5E6 Supernat rem	RBC CPD>AS1 IRD LUKOPR SR	672
FRESH FROZEN PLASMA	EA694	Yes	Thawed Apheresis FRESH FROZEN PLASMA	Thawed Apheresis FRESH FROZEN PLASMA ACD-A/XX/refg 1st container Riboflavin-treated	FFP AFR Thaw ACD-A 1C Ribo	24
FRESH FROZEN PLASMA	EA695	Yes	Thawed Apheresis FRESH FROZEN PLASMA	Thawed Apheresis FRESH FROZEN PLASMA ACD-A/XX/refg 2nd container Riboflavin-treated	FFP AFR Thaw ACD-A 2C Ribo	24

Component	Product Code	Modifiable	Product Type	Long Name	Short Name	Maximum Storage Hours
FRESH FROZEN PLASMA	EA696	Yes	Thawed Apheresis FRESH FROZEN PLASMA	Thawed Apheresis FRESH FROZEN PLASMA ACD-A/XX/refg 3rd container Riboflavin-treated	FFP AFR Thaw ACD-A 3C Ribo	24
FRESH FROZEN PLASMA	EA697	Yes	POOLED FRESH FROZEN PLASMA	POOLED FRESH FROZEN PLASMA CPD/XX/≤-25C ResLeu:<1E6 Psoralen-treated From 3 donors	FFP Pool CPD LUKOPR Psoraln 3DNR	8760
FRESH FROZEN PLASMA	EA698	Yes	POOLED FRESH FROZEN PLASMA	POOLED FRESH FROZEN PLASMA CPD/XX/≤-25C ResLeu:<1E6 Psoralen-treated From 5 donors	FFP Pool CPD LUKOPR Psoraln 5DNR	8760
FRESH FROZEN PLASMA	EA699	Yes	POOLED FRESH FROZEN PLASMA	POOLED FRESH FROZEN PLASMA CPD/XX/≤-25C ResLeu:<1E6 Psoralen-treated From 6 donors	FFP Pool CPD LUKOPR Psoraln 6DNR	8760
PLATELETS	EA700	No	Apheresis PLATELETS	Apheresis PLATELETS PAS-B/XX/20-24C ResLeu:<1E6 1st container Riboflavin-treated	PLT AFR PAS-B LUKOPR 1C Ribo	120
PLATELETS	EA701	Yes	Washed Apheresis PLATELETS	Washed Apheresis PLATELETS None/XX/20-24C ResLeu:<1E6 1st container Riboflavin-treated	PLT AFR Wash None LUKOPR 1C Ribo	4
RED BLOOD CELLS	EA702	No	RED BLOOD CELLS	RED BLOOD CELLS CPD>SAGM/450mL/refg ResLeu:<5E6 Buffy coat removed	RBC CPD>SAGM LUKOPR BuF Rem	1008
RED BLOOD CELLS	EA703	No	RED BLOOD CELLS	RED BLOOD CELLS CPD>SAGM/450mL/refg Irradiated ResLeu:<5E6 Buffy coat removed	RBC CPD>SAGM IRD LUKOPR BuF Rem	672
PLATELETS	EA704	Yes	Apheresis PLATELETS	Apheresis PLATELETS PAS-C/XX/20-24C ResLeu:<5E6	PLT AFR PAS-C LUKOPR	120
PLATELETS	EA705	Yes	Apheresis PLATELETS	Apheresis PLATELETS PAS-C/XX/20-24C Irradiated ResLeu:<5E6	PLT AFR PAS-C IRD LUKOPR	120
PLATELETS	EA706	Yes	Apheresis PLATELETS	Apheresis PLATELETS ACD-A>PAS-C/XX/20-24C Irradiated ResLeu:<5E6 Plasma reduced 1st container <3E11 plts	PLT AFR ACD-A>PAS-C IRD LUKOPR PLS Red 1C	120
PLATELETS	EA707	Yes	Apheresis PLATELETS	Apheresis PLATELETS ACD-A>PAS-C/XX/20-24C Irradiated ResLeu:<5E6 Plasma reduced 2nd container <3E11 plts	PLT AFR ACD-A>PAS-C IRD LUKOPR PLS Red 2C	120
PLATELETS	EA708	Yes	Apheresis PLATELETS	Apheresis PLATELETS ACD-A>PAS-C/XX/20-24C Irradiated ResLeu:<5E6 Plasma reduced 3rd container <3E11 plts	PLT AFR ACD-A>PAS-C IRD LUKOPR PLS Red 3C	120
FRESH FROZEN PLASMA	EA709	No	POOLED PLASMA	POOLED PLASMA CPD/XX/≤-18C For mnf:noninjectable restr use Cryo reduced Psoralen-treated From 2 donors	PLASMA Pool CPD MNFRNI CRYORed Psoraln 2DNR	8760
FRESH FROZEN PLASMA	EA710	No	POOLED PLASMA	POOLED PLASMA CPDA-1/XX/≤-18C For mnf:noninjectable restr use Cryo reduced Psoralen-treated From 2 donors	PLASMA Pool CPDA-1 MNFRNI CRYORed Psoraln 2DNR	8760
FRESH FROZEN PLASMA	EA711	No	POOLED PLASMA	POOLED PLASMA CP2D/XX/≤-18C For mnf:noninjectable restr use Cryo reduced Psoralen-treated From 2 donors	PLASMA Pool CP2D MNFRNI CRYORed Psoraln 2DNR	8760
FRESH FROZEN PLASMA	EA712	No	POOLED PLASMA	POOLED PLASMA CPD/XX/≤-18C Not for tx or mnf Cryo reduced Psoralen-treated From 2 donors	PLASMA Pool CPD NMT CRYORed Psoraln 2DNR	8760
FRESH FROZEN PLASMA	EA713	No	POOLED PLASMA	POOLED PLASMA CPDA-1/XX/≤-18C Not for tx or mnf Cryo reduced Psoralen-treated From 2 donors	PLASMA Pool CPDA-1 NMT CRYORed Psoraln 2DNR	8760
FRESH FROZEN PLASMA	EA714	No	POOLED PLASMA	POOLED PLASMA CP2D/XX/≤-18C Not for tx or mnf Cryo reduced Psoralen-treated From 2 donors	PLASMA Pool CP2D NMT CRYORed Psoraln 2DNR	8760

Table 3: Cold-Stored Platelets with Extended Maximum Storage Time

Component	Product Code	Modifiable	Product Type	Long Name	Short Name	Maximum Storage Hours
PLATELETS	E2790	Yes	PLATELETS	PLATELETS CPD/450mL/refg	PLT CPD	336
PLATELETS	E2791	No	PLATELETS	PLATELETS CPD/450mL/refg For mnf:injectable	PLT CPD MNFI	336
PLATELETS	E2792	No	PLATELETS	PLATELETS CPD/450mL/refg For mnf:noninjectable	PLT CPD MNFNI	336
PLATELETS	E2793	No	PLATELETS	PLATELETS CPD/450mL/refg Not for tx or mnf	PLT CPD NMT	336
PLATELETS	E2794	Yes	PLATELETS	PLATELETS CPDA-1/450mL/refg	PLT CPDA-1	336
PLATELETS	E2795	No	PLATELETS	PLATELETS CPDA-1/450mL/refg For mnf:injectable	PLT CPDA-1 MNFI	336
PLATELETS	E2796	No	PLATELETS	PLATELETS CPDA-1/450mL/refg For mnf:noninjectable	PLT CPDA-1 MNFNI	336
PLATELETS	E2797	No	PLATELETS	PLATELETS CPDA-1/450mL/refg Not for tx or mnf	PLT CPDA-1 NMT	336
PLATELETS	E2869	Yes	PLATELETS	PLATELETS NS/450mL/refg	PLT NS	336
PLATELETS	E2870	No	PLATELETS	PLATELETS NS/450mL/refg For mnf:injectable	PLT NS MNFI	336
PLATELETS	E2871	No	PLATELETS	PLATELETS NS/450mL/refg For mnf:noninjectable	PLT NS MNFNI	336
PLATELETS	E2872	No	PLATELETS	PLATELETS NS/450mL/refg Not for tx or mnf	PLT NS NMT	336
PLATELETS	E2922	No	Apheresis PLATELETS	Apheresis PLATELETS ACD-B/XX/refg	PLT AFR ACD-B	336
PLATELETS	E2923	No	Apheresis PLATELETS	Apheresis PLATELETS ACD-B/XX/refg For mnf:injectable	PLT AFR ACD-B MNFI	336
PLATELETS	E2924	No	Apheresis PLATELETS	Apheresis PLATELETS ACD-B/XX/refg For mnf:noninjectable	PLT AFR ACD-B MNFNI	336
PLATELETS	E2925	No	Apheresis PLATELETS	Apheresis PLATELETS ACD-B/XX/refg Not for tx or mnf	PLT AFR ACD-B NMT	336
PLATELETS	E2926	Yes	Apheresis PLATELETS	Apheresis PLATELETS ACD-A/XX/refg	PLT AFR ACD-A	336
PLATELETS	E2927	No	Apheresis PLATELETS	Apheresis PLATELETS ACD-A/XX/refg For mnf:injectable	PLT AFR ACD-A MNFI	336
PLATELETS	E2928	No	Apheresis PLATELETS	Apheresis PLATELETS ACD-A/XX/refg For mnf:noninjectable	PLT AFR ACD-A MNFNI	336
PLATELETS	E2929	No	Apheresis PLATELETS	Apheresis PLATELETS ACD-A/XX/refg Not for tx or mnf	PLT AFR ACD-A NMT	336
PLATELETS	E3916	Yes	POOLED PLATELETS	POOLED PLATELETS CPD>AS5/450mL/refg Plasma reduced Buffy coat plts prep Approx 120 E9 plts	PLT Pool CPD>AS5 PLS Red BUFCT	336
PLATELETS	E7472	No	PLATELETS	PLATELETS CPD/500mL/refg For mnf:injectable	PLT CPD MNFI	336
PLATELETS	E7473	No	PLATELETS	PLATELETS CPD/500mL/refg For mnf:noninjectable	PLT CPD MNFNI	336
PLATELETS	E8081	Yes	Apheresis PLATELETS	Apheresis PLATELETS ACD-A/XX/refg Irradiated ResLeu:<5E6 3rd container	PLT AFR ACD-A IRD LUKOPR 3C	336
PLATELETS	E8082	Yes	Apheresis PLATELETS	Apheresis PLATELETS ACD-A/XX/refg Irradiated ResLeu:<5E6 2nd container	PLT AFR ACD-A IRD LUKOPR 2C	336
PLATELETS	E8083	Yes	Apheresis PLATELETS	Apheresis PLATELETS ACD-A/XX/refg Irradiated ResLeu:<5E6 1st container	PLT AFR ACD-A IRD LUKOPR 1C	336

Component	Product Code	Modifiable	Product Type	Long Name	Short Name	Maximum Storage Hours
PLATELETS	E8084	Yes	Apheresis PLATELETS	Apheresis PLATELETS ACD-A/XX/refg Irradiated ResLeu:<5E6	PLT AFR ACD-A IRD LUKOPR	336
PLATELETS	E9425	Yes	Apheresis PLATELETS	Apheresis PLATELETS CPD/XX/refg Irradiated Psoralen-treated	PLT AFR CPD IRD Psoraln	336
PLATELETS	E9426	Yes	Apheresis PLATELETS	Apheresis PLATELETS CPD/XX/refg Irradiated ResLeu:<5E6 1st container Psoralen-treated	PLT AFR CPD IRD LUKOPR 1C Psoraln	336
PLATELETS	E9427	Yes	Apheresis PLATELETS	Apheresis PLATELETS CPD/XX/refg Irradiated ResLeu:<5E6 2nd container Psoralen-treated	PLT AFR CPD IRD LUKOPR 2C Psoraln	336
PLATELETS	E9428	Yes	Apheresis PLATELETS	Apheresis PLATELETS CPD/XX/refg Irradiated ResLeu:<5E6 3rd container Psoralen-treated	PLT AFR CPD IRD LUKOPR 3C Psoraln	336
PLATELETS	E9429	Yes	Apheresis PLATELETS	Apheresis PLATELETS CPD/XX/refg Irradiated ResLeu:<5E6 Psoralen-treated	PLT AFR CPD IRD LUKOPR Psoraln	336
PLATELETS	E9430	Yes	Apheresis PLATELETS	Apheresis PLATELETS ACD-A>PAS-C/XX/refg Psoralen-treated	PLT AFR ACD-A>PAS-C Psoraln	336
PLATELETS	E9431	Yes	Apheresis PLATELETS	Apheresis PLATELETS ACD-A>PAS-C/XX/refg ResLeu:<5E6 Psoralen-treated	PLT AFR ACD-A>PAS-C LUKOPR Psoraln	336
PLATELETS	E9432	Yes	Apheresis PLATELETS	Apheresis PLATELETS ACD-A>PAS-C/XX/refg ResLeu:<5E6 1st container Psoralen-treated	PLT AFR ACD-A>PAS-C LUKOPR 1C Psoraln	336
PLATELETS	E9433	Yes	Apheresis PLATELETS	Apheresis PLATELETS ACD-A>PAS-C/XX/refg ResLeu:<5E6 2nd container Psoralen-treated	PLT AFR ACD-A>PAS-C LUKOPR 2C Psoraln	336
PLATELETS	E9434	Yes	Apheresis PLATELETS	Apheresis PLATELETS ACD-A>PAS-C/XX/refg ResLeu:<5E6 3rd container Psoralen-treated	PLT AFR ACD-A>PAS-C LUKOPR 3C Psoraln	336
PLATELETS	E9435	Yes	Apheresis PLATELETS	Apheresis PLATELETS ACD-A>PAS-C/XX/refg Irradiated ResLeu:<5E6 Psoralen-treated	PLT AFR ACD-A>PAS-C IRD LUKOPR Psoraln	336
PLATELETS	E9436	Yes	Apheresis PLATELETS	Apheresis PLATELETS ACD-A>PAS-C/XX/refg Irradiated ResLeu:<5E6 1st container Psoralen-treated	PLT AFR ACD-A>PAS-C IRD LUKOPR 1C Psoraln	336
PLATELETS	E9437	Yes	Apheresis PLATELETS	Apheresis PLATELETS ACD-A>PAS-C/XX/refg Irradiated ResLeu:<5E6 2nd container Psoralen-treated	PLT AFR ACD-A>PAS-C IRD LUKOPR 2C Psoraln	336
PLATELETS	E9438	Yes	Apheresis PLATELETS	Apheresis PLATELETS ACD-A>PAS-C/XX/refg Irradiated ResLeu:<5E6 3rd container Psoralen-treated	PLT AFR ACD-A>PAS-C IRD LUKOPR 3C Psoraln	336
PLATELETS	E9439	Yes	Apheresis PLATELETS	Apheresis PLATELETS ACD-A>PAS-F/XX/refg Psoralen-treated	PLT AFR ACD-A>PAS-F Psoraln	336
PLATELETS	E9440	Yes	Apheresis PLATELETS	Apheresis PLATELETS ACD-A>PAS-F/XX/refg ResLeu:<5E6 Psoralen-treated	PLT AFR ACD-A>PAS-F LUKOPR Psoraln	336
PLATELETS	E9441	Yes	Apheresis PLATELETS	Apheresis PLATELETS ACD-A>PAS-F/XX/refg ResLeu:<5E6 1st container Psoralen-treated	PLT AFR ACD-A>PAS-F LUKOPR 1C Psoraln	336
PLATELETS	E9442	Yes	Apheresis PLATELETS	Apheresis PLATELETS ACD-A>PAS-F/XX/refg ResLeu:<5E6 2nd container Psoralen-treated	PLT AFR ACD-A>PAS-F LUKOPR 2C Psoraln	336
PLATELETS	E9443	Yes	Apheresis PLATELETS	Apheresis PLATELETS ACD-A>PAS-F/XX/refg ResLeu:<5E6 3rd container Psoralen-treated	PLT AFR ACD-A>PAS-F LUKOPR 3C Psoraln	336
PLATELETS	E9444	Yes	Apheresis PLATELETS	Apheresis PLATELETS ACD-A>PAS-F/XX/refg Irradiated ResLeu:<5E6 Psoralen-treated	PLT AFR ACD-A>PAS-F IRD LUKOPR Psoraln	336
PLATELETS	E9445	Yes	Apheresis PLATELETS	Apheresis PLATELETS ACD-A>PAS-F/XX/refg Irradiated ResLeu:<5E6 1st container Psoralen-treated	PLT AFR ACD-A>PAS-F IRD LUKOPR 1C Psoraln	336

Component	Product Code	Modifiable	Product Type	Long Name	Short Name	Maximum Storage Hours
PLATELETS	E9446	Yes	Apheresis PLATELETS	Apheresis PLATELETS ACD-A>PAS-F/XX/refg Irradiated ResLeu:<5E6 2nd container Psoalolen-treated	PLT AFR ACD-A>PAS-F IRD LUKOPR 2C Psoalolen	336
PLATELETS	E9447	Yes	Apheresis PLATELETS	Apheresis PLATELETS ACD-A>PAS-F/XX/refg Irradiated ResLeu:<5E6 3rd container Psoalolen-treated	PLT AFR ACD-A>PAS-F IRD LUKOPR 3C Psoalolen	336
PLATELETS	E9448	Yes	Apheresis PLATELETS	Apheresis PLATELETS CPD/XX/refg Irradiated	PLT AFR CPD IRD	336
PLATELETS	E9449	Yes	Apheresis PLATELETS	Apheresis PLATELETS ACD-A>PAS-C/XX/refg	PLT AFR ACD-A>PAS-C	336
PLATELETS	E9450	Yes	Apheresis PLATELETS	Apheresis PLATELETS ACD-A>PAS-C/XX/refg ResLeu:<5E6	PLT AFR ACD-A>PAS-C LUKOPR	336
PLATELETS	E9451	Yes	Apheresis PLATELETS	Apheresis PLATELETS ACD-A>PAS-C/XX/refg ResLeu:<5E6 1st container	PLT AFR ACD-A>PAS-C LUKOPR 1C	336
PLATELETS	E9452	Yes	Apheresis PLATELETS	Apheresis PLATELETS ACD-A>PAS-C/XX/refg ResLeu:<5E6 2nd container	PLT AFR ACD-A>PAS-C LUKOPR 2C	336
PLATELETS	E9453	Yes	Apheresis PLATELETS	Apheresis PLATELETS ACD-A>PAS-C/XX/refg ResLeu:<5E6 3rd container	PLT AFR ACD-A>PAS-C LUKOPR 3C	336
PLATELETS	E9454	Yes	Apheresis PLATELETS	Apheresis PLATELETS ACD-A>PAS-C/XX/refg Irradiated ResLeu:<5E6	PLT AFR ACD-A>PAS-C IRD LUKOPR	336
PLATELETS	E9455	Yes	Apheresis PLATELETS	Apheresis PLATELETS ACD-A>PAS-C/XX/refg Irradiated ResLeu:<5E6 1st container	PLT AFR ACD-A>PAS-C IRD LUKOPR 1C	336
PLATELETS	E9456	Yes	Apheresis PLATELETS	Apheresis PLATELETS ACD-A>PAS-C/XX/refg Irradiated ResLeu:<5E6 2nd container	PLT AFR ACD-A>PAS-C IRD LUKOPR 2C	336
PLATELETS	E9457	Yes	Apheresis PLATELETS	Apheresis PLATELETS ACD-A>PAS-C/XX/refg Irradiated ResLeu:<5E6 3rd container	PLT AFR ACD-A>PAS-C IRD LUKOPR 3C	336
PLATELETS	E9458	Yes	Apheresis PLATELETS	Apheresis PLATELETS ACD-A>PAS-F/XX/refg	PLT AFR ACD-A>PAS-F	336
PLATELETS	E9459	Yes	Apheresis PLATELETS	Apheresis PLATELETS ACD-A>PAS-F/XX/refg ResLeu:<5E6	PLT AFR ACD-A>PAS-F LUKOPR	336
PLATELETS	E9460	Yes	Apheresis PLATELETS	Apheresis PLATELETS ACD-A>PAS-F/XX/refg ResLeu:<5E6 1st container	PLT AFR ACD-A>PAS-F LUKOPR 1C	336
PLATELETS	E9461	Yes	Apheresis PLATELETS	Apheresis PLATELETS ACD-A>PAS-F/XX/refg ResLeu:<5E6 2nd container	PLT AFR ACD-A>PAS-F LUKOPR 2C	336
PLATELETS	E9462	Yes	Apheresis PLATELETS	Apheresis PLATELETS ACD-A>PAS-F/XX/refg ResLeu:<5E6 3rd container	PLT AFR ACD-A>PAS-F LUKOPR 3C	336
PLATELETS	E9463	Yes	Apheresis PLATELETS	Apheresis PLATELETS ACD-A>PAS-F/XX/refg Irradiated ResLeu:<5E6	PLT AFR ACD-A>PAS-F IRD LUKOPR	336
PLATELETS	E9464	Yes	Apheresis PLATELETS	Apheresis PLATELETS ACD-A>PAS-F/XX/refg Irradiated ResLeu:<5E6 1st container	PLT AFR ACD-A>PAS-F IRD LUKOPR 1C	336
PLATELETS	E9465	Yes	Apheresis PLATELETS	Apheresis PLATELETS ACD-A>PAS-F/XX/refg Irradiated ResLeu:<5E6 2nd container	PLT AFR ACD-A>PAS-F IRD LUKOPR 2C	336
PLATELETS	E9466	Yes	Apheresis PLATELETS	Apheresis PLATELETS ACD-A>PAS-F/XX/refg Irradiated ResLeu:<5E6 3rd container	PLT AFR ACD-A>PAS-F IRD LUKOPR 3C	336
PLATELETS	E9467	Yes	Apheresis PLATELETS	Apheresis PLATELETS ACD-A/XX/refg ResLeu:<5E6	PLT AFR ACD-A LUKOPR	336
PLATELETS	E9468	Yes	Apheresis PLATELETS	Apheresis PLATELETS ACD-A/XX/refg ResLeu:<5E6 1st container	PLT AFR ACD-A LUKOPR 1C	336

Component	Product Code	Modifiable	Product Type	Long Name	Short Name	Maximum Storage Hours
PLATELETS	E9469	Yes	Apheresis PLATELETS	Apheresis PLATELETS ACD-A/XX/refg ResLeu:<5E6 2nd container	PLT AFR ACD-A LUKOPR 2C	336
PLATELETS	E9470	Yes	Apheresis PLATELETS	Apheresis PLATELETS ACD-A/XX/refg ResLeu:<5E6 3rd container	PLT AFR ACD-A LUKOPR 3C	336
PLATELETS	E9471	Yes	Apheresis PLATELETS	Apheresis PLATELETS ACD-A/XX/refg ResLeu:<5E6 <3E11 plts	PLT AFR ACD-A LUKOPR	336
PLATELETS	E9472	Yes	Apheresis PLATELETS	Apheresis PLATELETS ACD-A/XX/refg Irradiated ResLeu:<5E6 <3E11 plts	PLT AFR ACD-A IRD LUKOPR	336
PLATELETS	E9473	Yes	Apheresis PLATELETS	Apheresis PLATELETS CPD/XX/refg Psoralen-treated	PLT AFR CPD Psoraln	336
PLATELETS	E9474	Yes	Apheresis PLATELETS	Apheresis PLATELETS CPD/XX/refg ResLeu:<5E6 1st container Psoralen-treated	PLT AFR CPD LUKOPR 1C Psoraln	336
PLATELETS	E9475	Yes	Apheresis PLATELETS	Apheresis PLATELETS CPD/XX/refg ResLeu:<5E6 2nd container Psoralen-treated	PLT AFR CPD LUKOPR 2C Psoraln	336
PLATELETS	E9476	Yes	Apheresis PLATELETS	Apheresis PLATELETS CPD/XX/refg ResLeu:<5E6 3rd container Psoralen-treated	PLT AFR CPD LUKOPR 3C Psoraln	336
PLATELETS	E9477	Yes	Apheresis PLATELETS	Apheresis PLATELETS CPD/XX/refg ResLeu:<5E6 Psoralen-treated	PLT AFR CPD LUKOPR Psoraln	336
PLATELETS	E9478	Yes	Apheresis PLATELETS	Apheresis PLATELETS CPD/XX/refg	PLT AFR CPD	336
PLATELETS	E9633	Yes	Apheresis PLATELETS	Apheresis PLATELETS ACD-A/XX/refg ResLeu:<5E6 Psoralen-treated	PLT AFR ACD-A LUKOPR Psoraln	336
PLATELETS	E9634	Yes	Apheresis PLATELETS	Apheresis PLATELETS ACD-A/XX/refg ResLeu:<5E6 1st container Psoralen-treated	PLT AFR ACD-A LUKOPR 1C Psoraln	336
PLATELETS	E9635	Yes	Apheresis PLATELETS	Apheresis PLATELETS ACD-A/XX/refg ResLeu:<5E6 2nd container Psoralen-treated	PLT AFR ACD-A LUKOPR 2C Psoraln	336
PLATELETS	E9636	Yes	Apheresis PLATELETS	Apheresis PLATELETS ACD-A/XX/refg ResLeu:<5E6 3rd container Psoralen-treated	PLT AFR ACD-A LUKOPR 3C Psoraln	336
PLATELETS	E9637	Yes	Apheresis PLATELETS	Apheresis PLATELETS ACD-A/XX/refg ResLeu:<5E6 <3E11 plts Psoralen-treated	PLT AFR ACD-A LUKOPR Psoraln	336
PLATELETS	E9638	Yes	Apheresis PLATELETS	Apheresis PLATELETS ACD-A>PAS-C/XX/refg ResLeu:<5E6 <3E11 plts Psoralen-treated	PLT AFR ACD-A>PAS-C LUKOPR Psoraln	336
PLATELETS	EA672	No	Apheresis PLATELETS	Apheresis PLATELETS PAS-E/XX/refg Irradiated	PLT AFR PAS-E IRD	336

This is the last page of *VBECs 2.3.3 Rev B Release Notes*.