

# **Telehealth Management Platform (TMP)**

## **5.2.6.1**

### **Deployment, Installation, Back-Out, and Rollback Guide**



**February 2025**

**Department of Veterans Affairs  
Office of Information and Technology (OI&T)**

## Introduction

This document describes how to deploy and install Telehealth Management Platform (TMP) 5.2.6.1 as well as the plan to rollback to a previous version or data set if necessary. 5.2.6.1 includes <description>. The instructions have been customized for this release.

For more information on TMP dependencies, deployment environments, site readiness, resources, and roles and responsibilities, please see Standard DIBR Content on Confluence.

Please see TMP 5.2.6.1 Hotfix Release Notes for updates included in this release.

## TMP 5.2.6.1 Deployment Instructions

This section provides steps to deploy the TMP related changes in the Production environment, including backup and solution deployment. Complete the steps in the following sections.

Step 1: Perform Backups

Step 2: Deploy the Solution

### Step 1: Perform Backups

Prior to beginning the deployment, it is important to make backups in the environments. Use the instructions on the following Confluence page to complete backups.

Backup Instructions

**Change Request: Begin Implementation**

CHG0572778 | Change Request | ServiceNow

### Step 2: Deploy the Solution

Backup TMP Dynamics

Location for the Solution file: GitHub TMP Release 5.2.6.1 Solution and Backup Files

Import solution file into the environment.

**Publish All Customizations**

### Step 3: Complete Manual Configuration

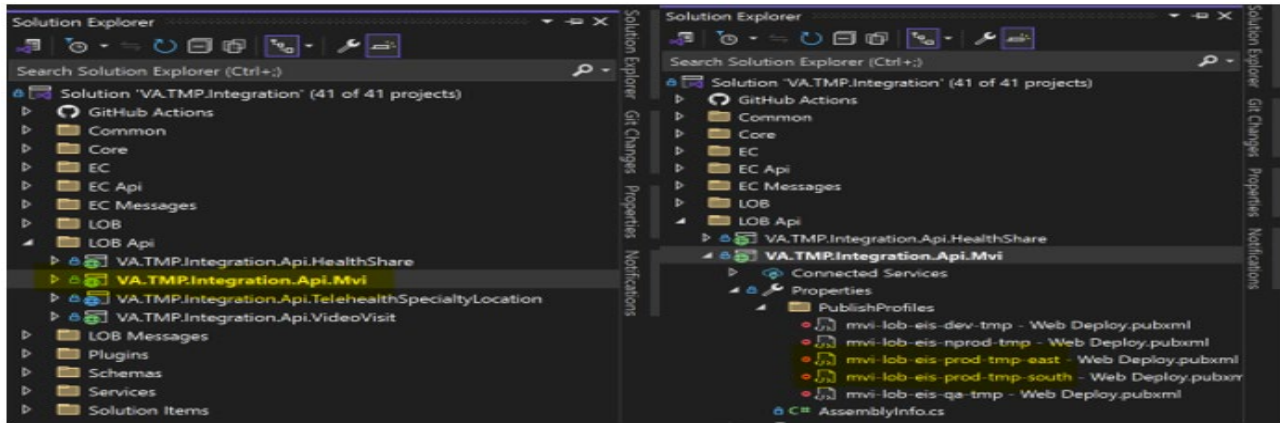
**Publish customizations to App Services**

1. MVI LOB App Service  
[TMP-3418] - INC37732246 Patient Search is not returning results for new patients

**Steps to Publish**

Open Visual Studio Integration Solutions Project in the **Release Branch**. (Make sure you have the latest changes)

Locate the MVI API Project and Publish Profiles in the LOB Api Folder (VA.TMP.Integration.Api.Mvi).



Either right-click on the Project and select the **Publish** option or select the **Publish** option from the Build Menu. Select either the Prod East or Prod South **EIS** Publish Profile from the menu (**Remember for lower environments select the appropriate Profile for that environment**). If you do not currently have those Profiles as seen ABOVE, you'll need to download them from Azure and Import them into Visual Studio, first. **Deploy using existing profiles in Visual Studio. Downloaded publish profiles are for username/password.** Verify the correctly Publish Profile is selected based upon the environment you wish to deploy to, then click Publish. Repeat Steps 2 thru 5 for the other remaining Region (i.e. East or Southwest). Verify Published correctly by logging into KUDO ->Dubug Console->CMD->site->wwwroot->bin dll's dates have been updated

## 2. Verify Integration Settings

1. Log in to TMP.
2. Select **I** from the Left Bottom Nav
3. Select **Integration**
4. Select **Integration Settings**
5. Select **SelectedPersonFakeResponseType** under Active Integration Settings.
6. Replace the existing value field with 1

**SelectedPersonFakeResponseType** - Saved  
Integration Setting

General   Related ▾

|        |                                |
|--------|--------------------------------|
| Name * | SelectedPersonFakeResponseType |
| Value  | 1                              |

Schafer\_Bryan ×

7. Click **Save**.

Prod Settings:

**SelectedPersonFakeResponseType = 1**  
**PersonSearchFakeResponseType = blank**  
**MVI ProxyAdd Fake Response Type = blank**

## Deployment Verification & Testing Procedure

Testing for 5.2.6.1 will be done in 3 phases.

1. SQA: The SQA team will complete regression testing and testing all updates in the SQA environment, using Postman to test the API updates.
2. Preprod: Business will perform regression testing and test the updates.
3. Production: Business will perform regression testing and test the updates.

Test cases can be found in the following Teams folder  
 TMP 5.2.6.1

## TMP 5.2.6.1 Backout and Rollback Plan

### Redeploy the backup of the App Service

#### Rollback Verification Procedure

Manual confirmation of the environment. Confirm any modifications made during the deployment are no longer present and compare file dates to confirm the backups are deployed. Perform smoke testing as required.

## Deployment, Testing, and Rollback Checklist

This section will be completed once each task is complete.

| Activity                  | Date                     | Individual who completed activity |
|---------------------------|--------------------------|-----------------------------------|
| SQA Deployment            | 02/19/2025<br>02/21/2025 |                                   |
| SQA Testing Completed     | 02/19/2025<br>02/22/2025 |                                   |
| Preprod Deployment        | 02/23/2025               |                                   |
| Preprod Testing Completed | 02/23/2025               |                                   |
| Production Backup         | 02/23/2025               |                                   |
| Production Deploy         | 02/23/2025               |                                   |
| Production Testing        | 02/23/2025               |                                   |
| Production Go/No Go       | 02/23/2025               |                                   |
| Production Rollback       | TBD                      |                                   |