

Compensation and Pension Records Interchange (CAPRI)

Software Version 2.7

Deployment, Installation, Back-Out, and Rollback Guide



November 2023

Department of Veterans Affairs (VA)

Office of Information and Technology (OIT)

Revision History

Date	Revision	Description	Author
11/2023	2.09	<p>Updated for DVBA*2.7*251 release.</p> <ul style="list-style-type: none"> All references to VistA patch and client application (GUI) have been updated to reflect current release. Section 1.2 Dependencies - Updated required builds. Section 3 Deployment – Updated timeline Section 3.1 Timeline - Revised Installment and Deployment Timeline information Section 3.2.5 Software – Updated associated patches that must be installed before DVBA*2.7*251 	Booz Allen Hamilton
11/2023	2.08	<p>Updated for DVBA*2.7*250 release.</p> <ul style="list-style-type: none"> All references to VistA patch and client application (GUI) have been updated to reflect current release. Section 1.2 Dependencies - Updated required builds. Section 3 Deployment – Updated timeline Section 3.1 Timeline - Revised Installment and Deployment Timeline information Section 3.2.5 Software – Updated associated patches that must be installed before DVBA*2.7*250 4.10.2 CAPRI Graphical User Interface (GUI) Verification Procedure – updated Figure 10 and Figure 12. <p>Global - Revised date on title page/footers to reflect current release month and year.</p>	Booz Allen Hamilton
02/2023	2.07	Updated for DVBA*2.7*243 release.	Booz Allen Hamilton
08/2022	2.06	Updated for DVBA*2.7*242 release.	Booz Allen Hamilton
08/2022	2.05	Updated for DVBA*2.7*238 release information. Removal of Windows 7/XP references in Section 4.8	Booz Allen Hamilton
02/14/2022	2.04	Updated for DVBA*2.7*240 release information. Removed section for CAPRI News and SharePoint Initialization News Server Share SharePoint Initialization previously 4.10.1.	Booz Allen Hamilton
10/08/2021	2.03	Updated for DVBA*2.7*237 release. Adding Re-Route functionality. Adding section 4.10.1 for CAPRI News and SharePoint Initialization	Liberty IT Solutions, a Booz Allen company
06/30/2021	2.02	Updated for DVBA*2.7*226 release.	Liberty IT Solutions
12/01/2020	2.01	<p>Updated for DVBA*2.7*224 release. All references have been updated to reflect current release.</p> <p>Section 3 – New Timeline</p>	Liberty IT Solutions

Date	Revision	Description	Author
10/12/2020	2.0	Updated sections from beginning through 4.3 for patch 223. Removed sections no longer needed for Windows 7 font size and Microsoft Imaging for Windows 7.	Liberty IT Solutions
03/02/2020	1.15	Updated for patch 220	Liberty IT Solutions
03/02/2020	1.14	Updated for patch 212	Liberty IT Solutions
09/18/2019	1.13	Updated versioning control to 212.7	Liberty IT Solutions
09/01/2019	1.12	<p>Section 3. Added Note: 'VistA Patch DVBA*2.7*223 must be installed in all production VistA systems before CAPRI GUI v2.7.223.6 is installed.'</p> <p>Section 3.1 Timeline: Revised Installment and Deployment Timeline information. Added 'Suggested Deployment Schedule' to text.</p> <p>Section 4.10.4 CAPRI Graphical User Interface (GUI) Verification Procedure:</p> <ul style="list-style-type: none"> • Figure 11: New CAPRI Splash screen • Figure 13: New CAPRI About Splash screen <p>Section 4.11 Back-Out: Updated Back-Out Procedure</p> <p>Global: Revised date on Title page and in footers to September 2019</p>	Liberty IT Solutions
03/29/2019	1.11	Page 20, Section 12.1, Added CAPRI Remote Procedure Calls Logger section	Liberty IT Solutions
02/19/19	1.10	<p>Page 34, under Appendix A, added a new Remote Procedure Call: DVBA CAPRI GET EDIPI</p> <p>Page 10, under 6.1 CAPRI GUI Client Software, revised 193.11 to 209</p>	Liberty IT Solutions
05/24/18	1.9	<p>Updated sections 2.2.2.1. and 2.2.3. The JLV tab replaced the VistAWeb tab in GUI version DVBA*2.7*193.12, so references to VistAWeb were removed.</p> <p>Updated section 2.2.1.1. Replaced reference to VistAWeb with JLV.</p> <p>Replace Remedy with ServiceNow</p> <p>DoD Tab has been disabled, and all references to DoD have been removed from the document.</p> <p>Removed DataFlow Diagram from Section 3.</p> <p>Added description for Joint Legacy Viewer (JLV) function (Section 2.2.3).</p> <p>Section 8.2, updated last paragraph with revisions from 1st Review.</p> <p>Updated formatting for Appendix A.</p> <p>Updated Dates to May on title page and in footers.</p>	Liberty IT Solutions
4/16/2018	1.8	URL to include descriptions for all values. Updated Appendix A, RPC parameter DVBAB GET	Liberty IT Solutions
09/30/15	1.7	Updated Appendix A	Liberty IT Solutions
3/05/2015	1.6	Updated various sections based on stakeholder feedback.	Liberty IT Solutions
2/25/2015	1.5	Updated Appendix A	Liberty IT Solutions
12/4/2014	1.4	Updated section 7.8 with a new screen shot	Liberty IT Solutions

Date	Revision	Description	Author
9/9/2014	1.3	Updated section 15.2 to only contain VDL link to CAPRI	Liberty IT Solutions
4/9/2014	1.2	Updated CAPRI Distribution File listing	Liberty IT Solutions
3/25/2013	1.1	Updated sections 5 and 7.4 with changing the CLAIMS server FQDN from CLAIMS.FORUM.VA.GOV "to" CLAIMS.MED.VA.GOV on 03/25/2013	Liberty IT Solutions
7/10/2012	1.0	Initial Publication	Liberty IT Solutions

Artifact Rationale

This document describes the Deployment, Installation, Back-out, and Rollback Plan for new products going into the VA Enterprise. The plan includes information about system support, issue tracking, escalation processes, and roles and responsibilities involved in all those activities. Its purpose is to provide clients, stakeholders, and support personnel with a smooth transition to the new product or software, and should be structured appropriately, to reflect particulars of these procedures at a single or at multiple locations.

Per the Veteran-focused Integrated Process (VIP) Guide, the Deployment, Installation, Back-out, and Rollback Plan is required to be completed prior to initial operating capability (IOC), with the expectation that it will be updated throughout the lifecycle of the project for each build, as needed.

Table of Contents

1. Introduction	1
1.1. Purpose	1
1.2. Dependencies	1
1.3. Constraints.....	1
2. Roles and Responsibilities	1
3. Deployment.....	2
3.1. Timeline.....	2
3.2. Site Readiness Assessment.....	3
3.2.1 Deployment Topology (Targeted Architecture).....	3
3.2.2 Site Information (Locations, Deployment Recipients).....	3
3.2.3 Site Preparation	4
3.2.4 Hardware	4
3.2.5 Software.....	4
3.2.6 Communications.....	4
4. Installation	4
4.1. Pre-installation and System Requirements.....	4
4.2. Platform Installation and Preparation.....	5
4.3. Download and Extract Files.....	5
4.4. Database Creation	5
4.5. Installation Scripts	5
4.6. Access Requirements and Skills Needed for the Installation.....	6
4.7. Additional Installation Files	6
4.7.1 VACAPRIVVA.dll.....	6
4.7.2 LIBEAY32.DLL & SSLEAY32.DLL	6
4.7.3 QPDF.EXE, QPDF13.DLL, LIBGCC_S_DW2-1.DLL & LIBSTDC++-6.DLL	6
4.7.4 CAPRI_Help.chm	7
4.7.5 CAPRI.map	7
4.7.6 CAPRISession.rdox	7
4.7.7 CAPRITerminalEmulators.ini	7
4.7.8 ssh_config.....	7
4.8 CAPRI Configuration for Windows and Non-standard Reflection Installations	9
Windows Installation.....	9
Non-standard Reflection Installations.....	10
4.9 Micro Focus Reflection	10
4.10. CAPRI GUI Launch	11

4.10.1 Shared Network Drive or CAPRI access via CPRS Installations.....	11
4.10.2 CAPRI Graphical User Interface (GUI) Verification Procedure	Error!
Bookmark not defined.	
4.11 Back-Out	13
4.12 Rollback Procedure.....	Error! Bookmark not defined.
4.13 Rollback Considerations	Error! Bookmark not defined.
4.14 Rollback Criteria	Error! Bookmark not defined.
4.15 Rollback Risks	Error! Bookmark not defined.
4.16 Authority for Rollback.....	Error! Bookmark not defined.

1. Introduction

This document describes how to deploy and install the Compensation and Pension Record Interchange (CAPRI), as well as how to back-out the product and rollback to a previous version or data set. This will include installation of CAPRI Patch DVBA*2.7*251. This document is a companion to the project charter and management plan for this effort. In cases where a non-developed COTS product is being installed, the vendor provided User and Installation Guide may be used, but the Back-Out Recovery strategy still needs to be included in this document.

1.1. Purpose

The purpose of this plan is to provide a single, common document that describes how, when, where, and to whom CAPRI will be deployed and installed, as well as how it is to be backed out and rolled back, if necessary. The plan also identifies resources, communications plan, and rollout schedule. Specific instructions for installation, back-out, and rollback are included in this document.

1.2. Dependencies

CAPRI is a system that gives Veterans Benefits Administration (VBA) claims processors and others access to compensation and pension examinations, clinical documents, and reports vital to process benefits claims. CAPRI consists of VistA patch DVBA*2.7*251 and a client application (GUI). Installation requires the following prerequisites:

- VistA Patches (for VHA only)

The following is a list of REQUIRED builds for this KIDS distribution (DVBA*2.7*251). KIDS will not allow the installation of this patch without their prior installation.

Required Builds:

DVBA*2.7*250

- Approved release from the VIP Triad.
- Test site sign-off from VBA Beta Sites and VHA IOC Sites.
- VIP Release Review Approval for Patch DVBA*2.7*251.

1.3. Constraints

There are no identified constraints to the installation of this VistA component of CAPRI.

2. Roles and Responsibilities

This section describes the teams who perform the steps described in this deployment plan.

Deployment and installation activities are performed by representatives from the teams listed in the following table. This phase begins after the solution design (including deployment topology) is complete. Design activities are not included in this phase.

Team	Phase / Role	Tasks	Project Phase (See Schedule)
CAPRI Development Team	Deployment	Plan and schedule deployment	Deployment
CAPRI Development Team	Deployment	Develop O&M Plan	Deployment
Release Readiness	Testing	Conduct VIP Release Review Approval	Testing
Test Sites	Testing	IOC and BETA Tests Patch DVBA*2.7*251	Testing
VBA/VHA Business Offices	Deployment	Develop Communications Plan and key messages well in advance	Deployment
Health Product Support	Testing	Review Patch DVBA*2.7*251	Testing
Health Product Support	Deployment	Release Patch DVBA*2.7*251 nationally	Deployment
Regional PM/FIS/OPP PM	Installation	Ensure authority to operate and that certification and authorization (C&A)/security documentation is in place	Installation
Infrastructure Operations	Installation	Install the patch as scheduled	Installation

Table 1 Deployment Roles and Responsibilities

3. Deployment

NOTE: VistA Patch DVBA*2.7*251 must be installed in all production VistA systems

Deployment and installation of the Compensation and Pension Record Interchange (CAPRI) is planned as follows:

- 1 **National Release: 11/20/23** VistA Patch DVBA*2.7*251 will be deployed to all 132 instances of VistA within a 1 - day of compliance period

The release of the patch will be performed by Health Product Support (HPS) members, supported by the CAPRI project team, along with representatives from peer organizations. The installation will be performed by Local, VISN, or Regional IT support personnel.

3.1.Timeline

The installation and deployment runs for 90 days, which includes a warranty period to monitor for defects. The approximate timeline for this effort is shown in the table below:

Phase	Activity	Start	Finish
General Release	IOC Testing	11/17/23	11/17/23
	National Implementation	11/20/23	11/20/23
	Warranty Period	11/20/23	02/18/24
(Dates shown are subject to change due to unforeseen circumstances.)			

Table 2 CAPRI Patch DVBA*2.7*251 Deployment Timeline

Suggested Deployment Schedule:

- Day 1-5: Install DVBA*2.7*251 into all the production VistA systems (CAPRI GUI DVBA*2.7*243.07 is compatible with that VistA patch)

3.2.Site Readiness Assessment

This deployment will enhance the capabilities of the existing CAPRI system. This section discusses the locations that will receive the upgrades to the CAPRI system.

3.2.1 Deployment Topology (Targeted Architecture)

The VistA component of the new version needs to be installed into all instances of VistA. All facilities will use their established local procedures to install the new software.

Additionally, a nationally released patch updates the files in VistA and only affects the Users with the appropriate CAPRI menu options in VistA.

3.2.2 Site Information (Locations, Deployment Recipients)

The new version of CAPRI's VistA patch (DVBA*2.7*251) will be installed across the entire VA Enterprise for all CAPRI Users to all instances of VistA. All facilities in Regions 1-5 will use established location procedures to install the new software.

The following test sites are participating in the testing of the DVBA*2.7*251 server software:

- Test Sites:

Type	Site
VHA	Tampa VAMC

Table 3 Test Sites

NOTE: The test sites used may change based on a site's willingness to participate, workload, and other factors. Sites listed in **boldface type** are expected to be primary ("Alpha") testers. Other sites listed are secondary ("Beta") testers who will help us uncover any hidden defects before we release nationally.

3.2.3 Site Preparation

The following table describes preparation required by the site prior to deployment.

Site/Other	Problem/Change Needed	Features to Adapt/Modify to New Product	Actions/Steps	Owner
All	Create backups	N/A	N/A	Local facility, VISN, or Region

Table 4 Site Preparation Resources

This section describes the resources needed for deployment and installation.

3.2.4 Hardware

There are no new hardware requirements for this software update.

3.2.5 Software

Associated patches that must be installed BEFORE `DVBA*2.7*251:
CAPRI DVBA*2.7*250

Please see the Roles and Responsibilities table in Section 2 above for details about who is responsible for preparing the site to meet these software specifications.

3.2.6 Communications

This section describes the communications that need to occur to upgrade CAPRI:

1. The CAPRI Development Team will provide the installation files to VHA and other users (see Section 4). We will work with VHA to proactively notify users to the maximum extent possible, but it is recognized and understood that we may not reach everyone prior to installation of the Vista patch.
2. The CAPRI Deployment Team will conduct weekly status conference calls and ad-hoc calls with test sites and stakeholders to provide status and answer questions.

4. Installation

This section describes how to install CAPRI.

4.1.Pre-installation and System Requirements

The installation of the patch will be introducing new files, updating routines, parameters, remote procedure calls, and options.

1. Choose the PackMan message containing this patch.
2. Choose the INSTALL/CHECK MESSAGE PackMan option.

3. From the Kernel Installation and Distribution System Menu, select the Installation Menu. From this menu, you may elect to use the following options. When prompted for the INSTALL NAME enter the patch DVBA*2.7*251:
 - a. Backup a Transport Global - This option will create a backup message of any routines exported with this patch. It will not backup any other changes such as DDs or templates.
 - b. Compare Transport Global to Current System - This option will allow you to view all changes that will be made when this patch is installed. It compares all components of this patches routines, DDs, and templates).
 - c. Verify Checksums in Transport Global - This option will allow you to ensure the integrity of the routines that are in the transport global.
4. From the Installation Menu, select the Install Package(s) option and choose the patch to install:
 - a. When prompted 'Want KIDS to Rebuild Menu Trees Upon Completion of Install? NO/NO Select NO
 - b. When prompted 'Want KIDS to INHIBIT LOGONs during the install? NO/NO Select NO
 - c. When prompted 'Want to DISABLE Scheduled Options, Menu Options, and Protocols? NO/NO Select NO
5. If prompted 'Delay Install (Minutes): (0 – 60): 0//' respond 0.

4.2.Platform Installation and Preparation

We do not anticipate difficulties with version incompatibility. Nevertheless, we recommend deploying the new VistA patch DVBA*2.7*251 into all 132 VistA production systems.

All sites should make sure that their test environments mirror the state of their production environments. This is important because it helps identify deficiencies (such as outdated or missing patches) when the new software is installed into the test environment rather than into the production environment.

4.3.Download and Extract Files

Documentation can be found on the VA Software Documentation Library at:

<https://www.va.gov/vdl/>.

Optional Distribution Files that Contain Important User Info

DVBA_DIBRG.PDF Deployment,Installation,Back-Out and Rollback Guide BINARY

4.4.Database Creation

N/A

4.5.Installation Scripts

Patch installers will follow their local procedures to install the software in accordance with the Installation Guide.

4.6. Access Requirements and Skills Needed for the Installation

Installation of VistA Patch DVBA*2.7*251 requires VistA programmer access.

Some sites utilize shortcut folders on users' desktops with icons that point to a CAPRI installation on a server.

4.7. Additional Installation Files

In addition to the executable file, there are other files included with the CAPRI installation zip. The general purpose of these files and where they need to be located are as follows:

4.7.1 VACAPRIVVA.dll

The VACAPRIVVA.dll file is a dynamic link library that provides the web services client interface for the Virtual VA web service, which was added in patch DVBA*2.7*181.

Important: CAPRI will not function without this file.

- VACAPRIVVA.dll is required for CAPRI to function.
- VACAPRIVVA.dll must be located in the same directory as the CAPRI executable (CAPRI.exe).

The following dialog box displays when CAPRI cannot find the VACAPRIVVA.dll file.

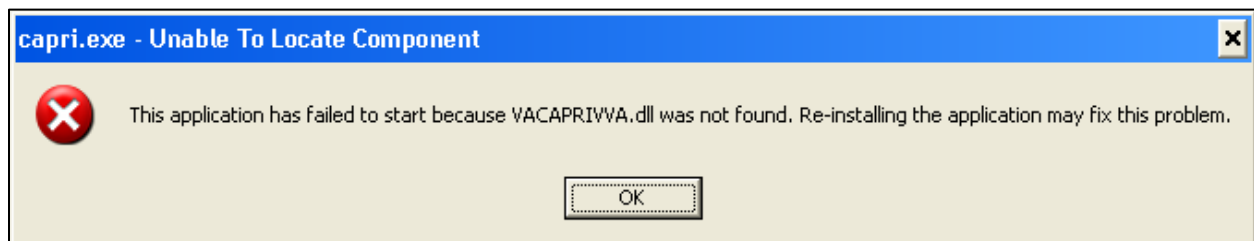


Figure 1. Missing File Alert

4.7.2 LIBEAY32.DLL & SSLEAY32.DLL

Libeay32.dll and Ssleay32.dll are dynamic link libraries that provide the web services client interface for the VLER/DAS web service, which was added in patch DVBA*2.7*187.

Important: CAPRI requires these files to transfer exam data to VLER/DAS.

- Libeay32.dll and Ssleay32.dll are required for exam data transfer to VLER/DAS.
- Libeay32.dll and Ssleay32.dll must be located in the same directory as the CAPRI executable (CAPRI.exe).

4.7.3 QPDF.EXE, QPDF13.DLL, LIBGCC_S_DW2-1.DLL & LIBSTDC++-6.DLL

QPDF.exe, QPDF13.DLL, LIBGCC_S_DW2-1.DLL & LIBSTDC++-6.DLL are files that support PDF Compression and Linearization. PDF Compression reduces the file size of the PDF Exam Results included in transmissions between CAPRI and VLER/DAS. Smaller file sizes reduce transmission times.

- QPDF.exe, QPDF13.dll, Libgcc_s_dw2-1.dll and Libstdc++-6.dll are required for PDF compression when sending exam data to VLER/DAS.
- QPDF.exe, QPDF13.dll, Libgcc_s_dw2-1.dll and Libstdc++-6.dll must be located in the same directory as the CAPRI executable (CAPRI.exe).

4.7.4 CAPRI_Help.chm

The CAPRI_Help.chm file contains the on-line help functionality.

CAPRI_Help.chm is not required for CAPRI to function, but its presence is recommended. CAPRI_Help.chm should be located in the same directory as the CAPRI executable (CAPRI.exe).

If CAPRI is setup to run from a disk drive that is not local to the workstation, CAPRI should be given write permissions to the “TEMP” folder of the workstation. If the TEMP folder is not writable for any reason, the on-line help functionality may not work properly.

4.7.5 CAPRI.map

The CAPRI.map file contains a list of error addresses and source code line numbers that CAPRI utilizes to provide more detailed information to the development team when an error occurs in CAPRI.

CAPRI.map is not required for CAPRI to function, but its presence is recommended. CAPRI.map should be located in the same directory as the CAPRI executable (CAPRI.exe).

4.7.6 CAPRISession.rdox

- CAPRISession.rdox is a Micro Focus Reflection configuration file. It configures Reflection to terminate when a terminal session disconnects.
- CAPRISession.rdox is used for the new Micro Focus Reflection application.
- CAPRISession.rdox is not required for CAPRI to function, but its presence is recommended.
- CAPRISession.rdox should be located in the same directory as the CAPRI executable (CAPRI.exe).

4.7.7 CAPRITerminalEmulators.ini

- CAPRITerminalEmulators.ini is a Micro Focus Reflection configuration file. It tells CAPRI where the Micro Focus Reflection application is installed.
- CAPRITerminalEmulators.ini should be located in the same directory as the CAPRI executable (CAPRI.exe).

4.7.8 ssh_config

The ssh_config file provides the parameters used by Micro Focus Reflection Secure Shell to configure PC-to-host security options. CAPRI does not require this file for most functions, but it is required when establishing Reflection Secure Shell terminal sessions using the “Vista” button. The directory location of the ssh_config file:

C:\Program Files (x86)\Micro-Focus\Reflection

NOTE: The target folder for `ssh_config` is typically hidden on most systems.

To show hidden files and folders on Windows, perform the following steps:

1. In the search box on the taskbar, type “hidden files”
2. Select “Show hidden files” from the results.

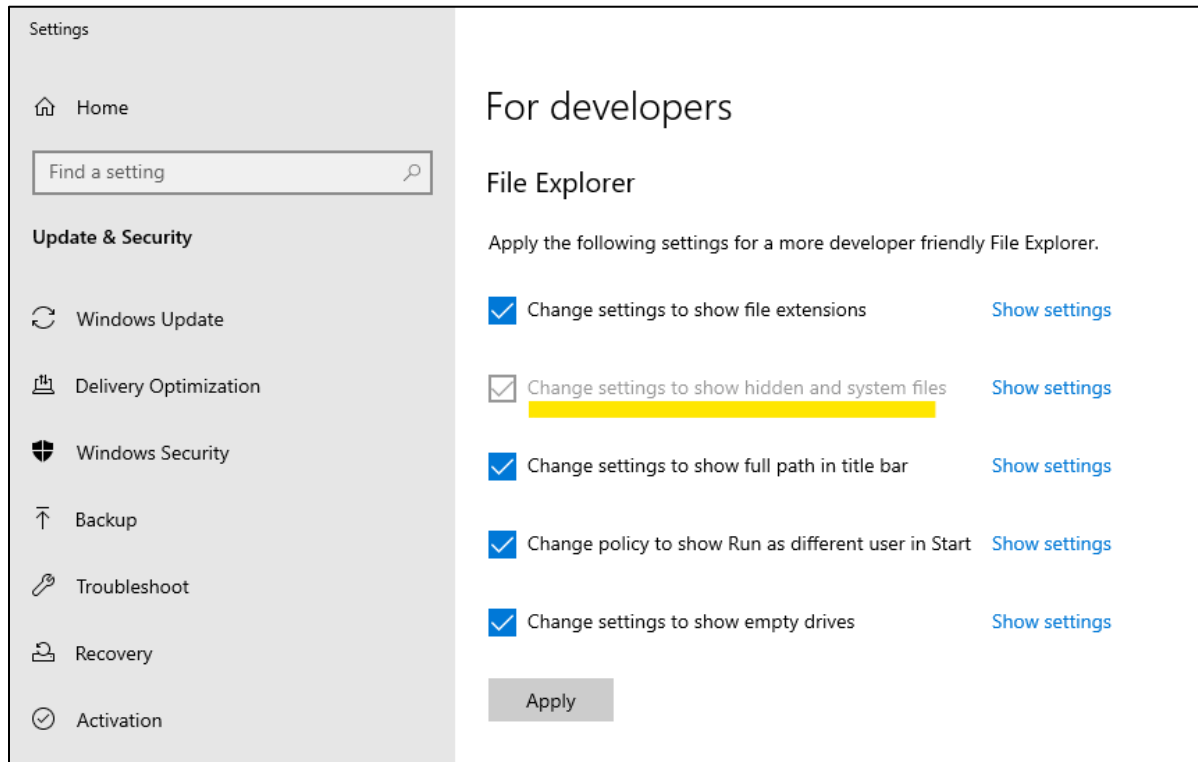
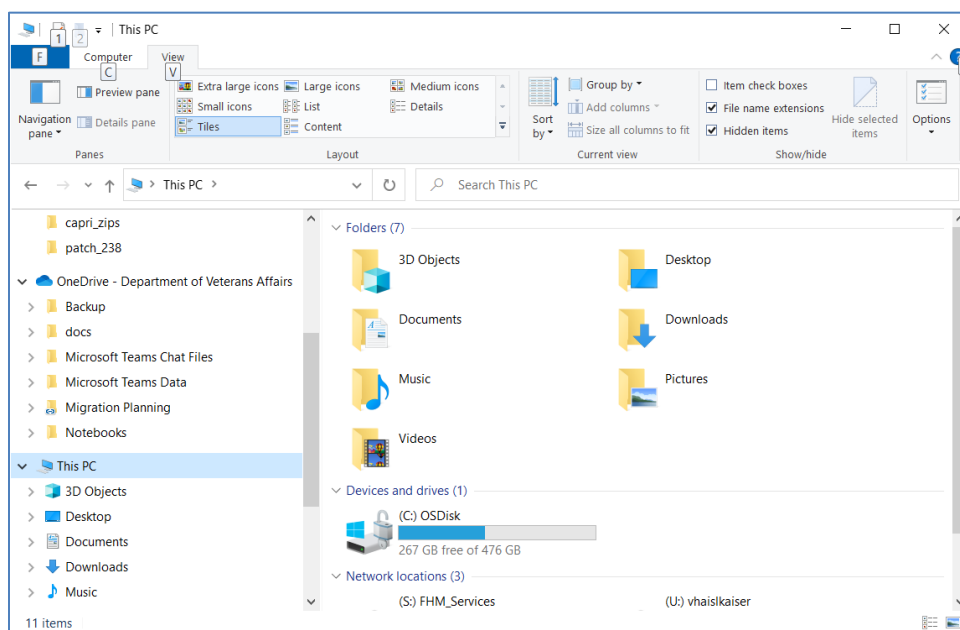


Figure 2. Show Hidden Files



4.8 CAPRI Configuration for Windows and Non-standard Reflection Installations

Prior to launching Reflection, CAPRI searches the directory path that contains the CAPRI executable (CAPRI.exe) for an optional plain text configuration file named "CapriTerminalEmulators.ini." The purpose of the configuration file is to specify an alternate path that contains the Micro-Focus Reflection executable (Attachmate.Emulation.Frame.exe). If CAPRI does not detect the configuration file, CAPRI assumes that the Reflection executable exists in the default Windows Reflection installation path: "C:\Program Files (x86)\Micro-Focus\Reflection."

Windows Installation

The example "CapriTerminalEmulators.ini" configuration file provided with patch DVBA*2.7*180 is configured to provide support for the default installation path of Micro Focus Reflection on a Windows workstation. Place the configuration file in the same directory that contains the CAPRI executable.

Alternatively, use the following procedure to create the configuration file:

Create the configuration file named "CapriTerminalEmulators.ini" using a plain text editor, such as Notepad. Populate the configuration file with the following three lines:

```
[Config]
ApplicationLegacy=C:\Program Files (x86)\Attachmate\Reflection\R2win.exe
Application="C:\Program Files (x86)\Micro
Focus\Reflection\Attachmate.Emulation.Frame.exe"
```

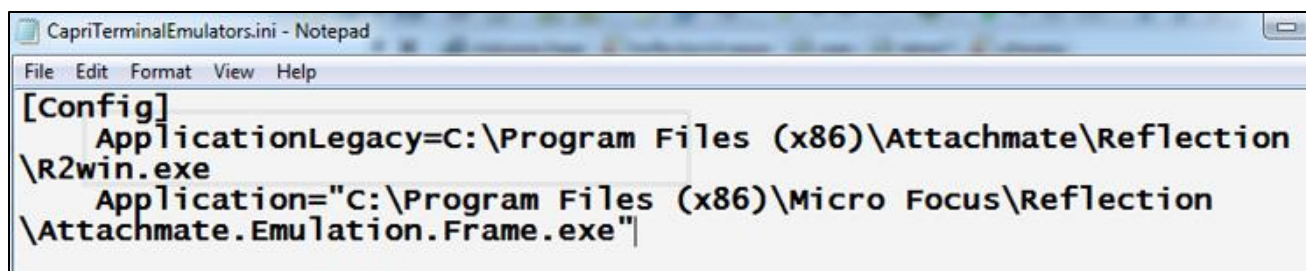



Figure 3. Config File for Standard Reflection Installation

NOTE: Save the file and place it in the same directory that contains the CAPRI executable.

Non-standard Reflection Installations

If Reflection is installed in an alternate location, CAPRI can be configured to accommodate this. In order to do this, one should create a file named "CapriTerminalEmulators.ini" in the directory that contains the "CAPRI.exe" file. In this file, one should specify the location of the "Attachment.Emulation.Frame.exe." For example, in order to specify a Reflection installation located in "C:\My Files\Attachmate\Reflection," the CAPRITerminalEmulator.ini should contain the following lines:

```
[Config]
ApplicationLegacy=C:\My Files\Attachmate\Reflection\R2win.exe
Application="C:\My Files\Attachmate\Reflection\Attachmate.Emulation.Frame.exe"
```

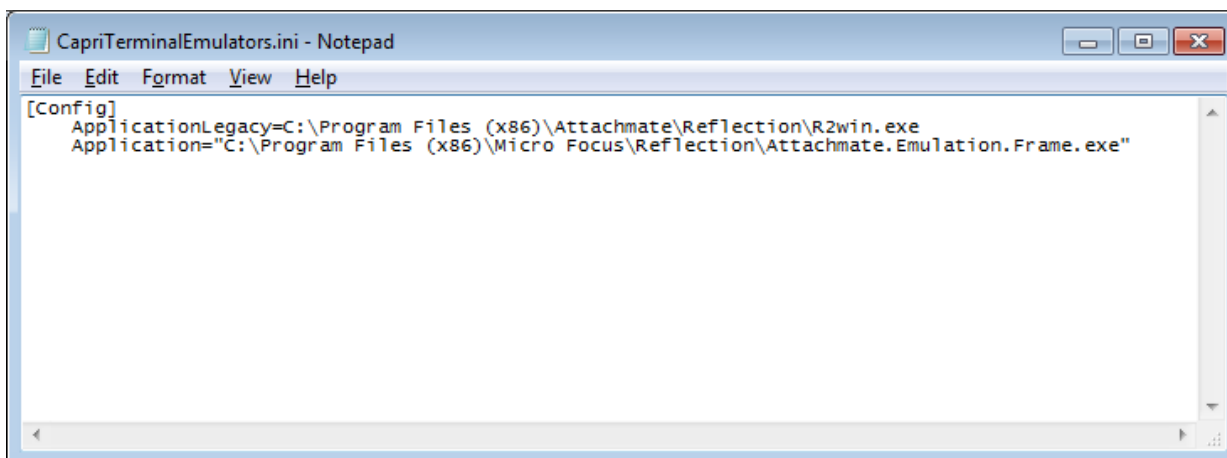


Figure 4. Config File for Non-Standard Reflection Installation

4.9 Micro Focus Reflection

CAPRISession.rdox is the configuration file for the Reflection application.

NOTE: If your site uses a non-standard Reflection installation, the CAPRITerminalEmulators.ini file will need to be updated to reflect the value currently used at your site.

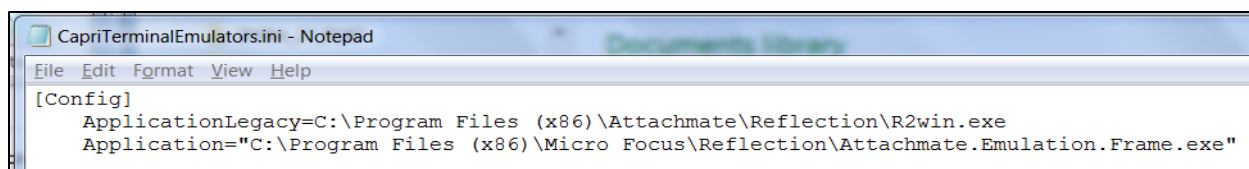


Figure 5. New CapriTerminalEmulators.ini file format

```
[Config]
ApplicationLegacy=C:\Program Files (x86)\Attachmate\Reflection\R2win.exe
Application="C:\Program Files (x86)\Micro
Focus\Reflection\Attachmate.Emulation.Frame.exe"
```

If your site has a non-standard Reflection location, the ApplicationLegacy line will need to be updated to reflect the value currently used at your site. In the example below, **C:\My Files\Attachmate\Reflection** was the non-standard site. That value will need to be updated on the ApplicationLegacy line – shown below.

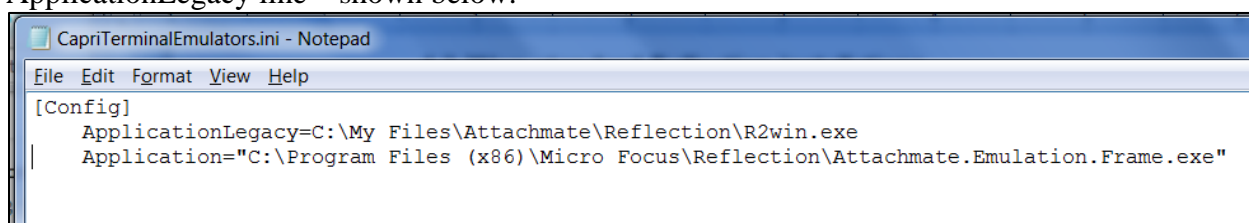


Figure 6. New CapriTerminalEmulators.ini with existing non-standard Reflection location

```
[Config]
ApplicationLegacy=C:\My Files\Attachmate\Reflection\R2win.exe
Application="C:\Program Files (x86)\Micro
Focus\Reflection\Attachmate.Emulation.Frame.exe"
```

4.10. CAPRI GUI Launch

4.10.1 Shared Network Drive or CAPRI access via CPRS Installations

If your site installs CAPRI on a Shared Network Drive and users access a “shortcut” to launch CAPRI or if your users access CAPRI via CPRS, the following **MUST** be performed to allow users to view PDF files from DAS. Users will receive the following error if this is not done.

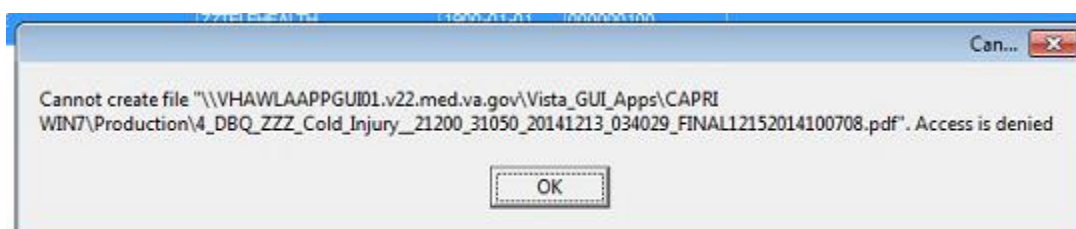


Figure 7. CAPRI Shortcut Launch Error

If the “Start In” folder for CAPRI shortcut at your site is a read-only only folder, it should be changed to a writable folder. This is the folder where documents from VLER DAS are stored temporarily for users to view documents (ex: PDF).

Our recommendation is to use %TEMP% as the default starting directory. This can be set in the shortcut that is used to launch CAPRI.

- Right-click on the (desktop) CAPRI shortcut, select Properties.
- On the Shortcut tab, in the Start in field, enter %TEMP%.
- Click OK.
- Now, when launching CAPRI, it will be able to write temporary files such as Word documents or PDFs to the temporary directory, and CAPRI will be able to display those files to the user.

NOTE: This temp directory change only fixes the “access denied” problem when CAPRI is launched directly from a shortcut.

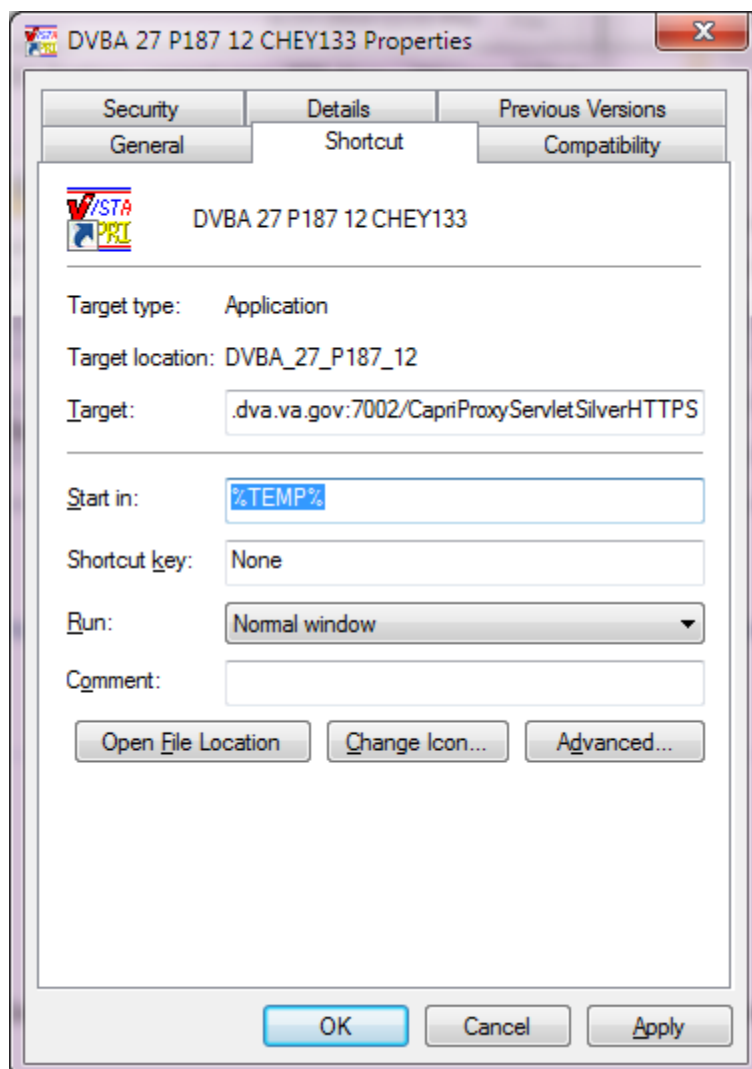


Figure 8. Example of Starting CAPRI from a TEMP Directory Location

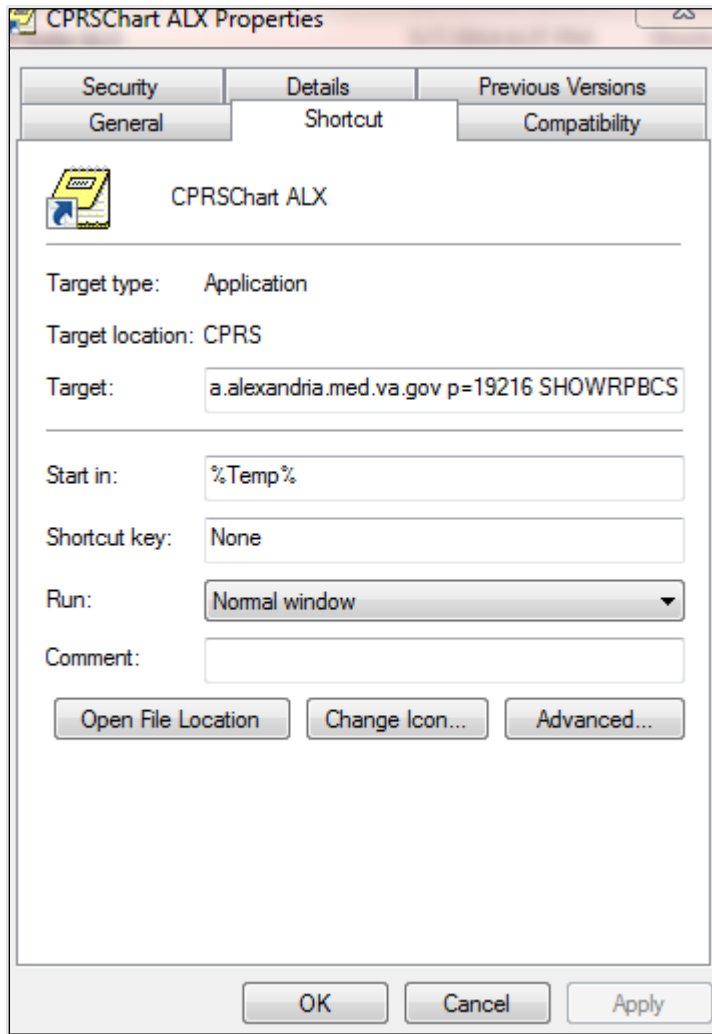


Figure 9. Example of CAPRI accessed via CPRS

Benefits:

1. Each user is guaranteed by Windows to have a unique writable folder.
2. It is a known environment variable and also guaranteed to exist in any environment.
3. Due to VA GPO Policy, this folder gets cleared on logon / logoff, hence no disk space impact is caused.

4.11 Back-Out

Back-out Procedures are only needed if there are major problems (examples include the KIDS notice of incompletion or hard errors) resulting from the installation of this patch. Log a ServiceNow helpdesk ticket so the development team can assist in this process.