

Date: July 5, 2022

From: Assistant Under Secretary for Health for Clinical Services/Chief Medical Officer (CMO) (11)

Subj: Status of Required Primary Care-Mental Health Integration (PCMHI) Implementation (VIEWS 7872913)

To: Veterans Integrated Services Network (VISN) Director (10N1-23)
VISN CMOs (10N1-23)
VISN Primary Care Leads (10N1-23)
VISN Chief Mental Health Officers (CMHO) (10N1-23)

1. The purpose of this memorandum is to provide a status update on implementation of PCMHI, required by the Veterans Health Administration (VHA) Handbook 1160.01, Uniform Mental Health Services in Department of Veterans Affairs (VA) Medical Centers and Clinics.

2. The findings from the 2022 PCMHI Program Assessment indicate the following level of compliance with VHA requirements, as measured by facility self-report at all 455 VA medical centers and Community Based Outpatient Centers (CBOC) serving greater than 5,000 patients (See Attachment A for listing of facilities and compliance status and Attachment B for site data for Same-day Access and select access-related Program Assessment responses):

• Co-located Collaborative Care (CCC):	95.4% compliance
• Care Management (CM):	80.7% compliance
• Both CCC and CM (as required by policy):	79.3% compliance

PCMHI services were reported at nearly all VA medical center divisions (164/168), all but one Very Large CBOC (10,000+ patients; 111/112), and more than 95% of Large CBOCs (5,000–9,999 patients; 167/175). However, 20.7% of sites did not report one or both mandated PCMHI components (CCC or CM). Care management was unavailable at nearly 1 in 5 sites (88/455). VISN CMHOs for sites that were not in compliance with policy requirements will be contacted by the Office of Mental Health and Suicide Prevention (OMHSP) regarding implementation status and action plans.

3. The 2022 Patient-Aligned Care Teams PCMHI Program Assessment also asked about PCMHI services at all small and medium CBOCs, defined as CBOCs serving fewer than 5,000 unique patients with primary care clinics. Although current policy does not require PCMHI services at these sites, they were reported as available at 62% of small CBOCs (109/177) and 66% of medium CBOCs (282/428) (See Attachment C for listing of small and medium CBOCs and program status).

4. Technical Assistance is available to support PCMHI implementation. Facilities that may benefit from intensive facility-based implementation support are encouraged to contact Jessica Martin, Acting Associate Director, Education/Implementation Core,

Center for Integrated Healthcare, OMHSP, at Jessica.Martin24@va.gov to discuss these assistance options.

5. Questions regarding this guidance should be directed to Clifford Smith, Director, Field Support and Analytics, OMHSP, at Clifford.Smith2@va.gov; Jennifer Patterson, National Director, Integrated Services, OMHSP, at Jennifer.Patterson@va.gov. Further information about the Program Assessment is available from the National PCMH Evaluation team, upon request John.McCarthy2@va.gov, Benjamin.Szymanski@va.gov).

A handwritten signature in black ink, appearing to read 'Erica Scavella', with a stylized, cursive script.

Erica Scavella, M.D., FACP, FACHE

Attachments

Primary Care-Mental Health Integration (PCMHI) Services Status: Findings from the 2022 PACT PCMHI Evaluation Program Assessment, by Facility

Office of Mental Health Services and Suicide Prevention, SMITREC, National Primary Care - Mental Health Integration (PCMHI) Evaluation

Points of Contact: John McCarthy (John.McCarthy2@va.gov); Ben Szymanski (Benjamin.Szymanski@va.gov)

Date: 6/14/2022

Sites Reporting Compliance with Uniform Mental Health Services Handbook (2008) Requirements in 2022 Program Assessment:

PCMHI Services, including Co-located Collaborative Care (CCC) and Care Management (CM) Services, are required at VA Medical Centers (VAMCs) with Primary Care clinics, Very Large CBOCs (serving 10,000+; VLCBOCs), and Large CBOCs (serving 5,000-9,999; LCBOCs).

Program Assessment was fielded 2/24/2022 to 5/4/2022 regarding services available as of 2/1/2022. N = 455 divisions completed with a 100% response rate; report includes updated information derived through field contacts as part of program assessment validation.

Notes:

Shaded cells highlight a "No" response.

Bold italics indicates a change from the 2022 Survey responses, including sites that were not surveyed in 2022.

* received program assessment in 2022 yet not 2021, reflecting changes in CBOCs' size categorizations, per VSSC Core Uniques Cube, FY2021

^ designated as Health Care Centers (HCC) in FY21 VAST Annual Crosswalk of Services

VISN	Facility Name	Station Number	Facility Type	PCMHI Services	Co-located Collaborative Care	Care Management	Both CCC and CM
1	Togus	402	VAMC	Yes	Yes	No	No
1	Lewiston	402GE	LCBOC	Yes	No	No	No
1	Bangor	402HB	LCBOC	Yes	No	Yes	No
1	White River Junction	405	VAMC	Yes	Yes	Yes	Yes
1	Burlington Lakeside	405HA	LCBOC	Yes	Yes	No	No
1	Bedford	518	VAMC	Yes	Yes	Yes	Yes
1	Jamaica Plain	523	VAMC	Yes	Yes	Yes	Yes
1	West Roxbury	523A4	VAMC	Yes	Yes	Yes	Yes
1	Brockton	523A5	VAMC	Yes	Yes	Yes	Yes
1	Lowell	523BY	LCBOC	Yes	No	Yes	No
1	Manchester	608	VAMC	Yes	Yes	Yes	Yes
1	VA Central Western Massachusetts HCS	631	VAMC	Yes	Yes	Yes	Yes
1	Springfield	631BY	LCBOC	Yes	Yes	No	No
1	Worcester	631GE	LCBOC	Yes	Yes	Yes	Yes
1	Providence	650	VAMC	Yes	Yes	Yes	Yes
1	West Haven	689	VAMC	Yes	Yes	Yes	Yes
1	Newington	689A4	VAMC	Yes	Yes	Yes	Yes
1	New London*	689HC	LCBOC	No*	No*	No*	No*
2	Bronx	526	VAMC	Yes	Yes	Yes	Yes
2	Buffalo	528	VAMC	Yes	Yes	Yes	Yes
2	Batavia	528A4	VAMC	Yes	Yes	Yes	Yes
2	Canandaigua	528A5	VAMC	Yes	Yes	Yes	Yes
2	Bath	528A6	VAMC	Yes	Yes	Yes	Yes
2	Syracuse	528A7	VAMC	Yes	Yes	No	No
2	Albany	528A8	VAMC	Yes	Yes	No	No
2	Rome	528GM	LCBOC	Yes	Yes	No	No
2	Binghamton*	528GN	LCBOC	Yes*	Yes*	No*	No*
2	Rochester Calkins	528QC	VLCBOC	Yes	Yes	Yes	Yes
2	East Orange	561	VAMC	Yes	Yes	Yes	Yes
2	Lyons	561A4	VAMC	Yes	Yes	Yes	Yes
2	Brick	561BZ	VLCBOC	Yes	Yes	Yes	Yes
2	Hackensack	561GD	LCBOC	Yes	Yes	No	No
2	Montrose	620	VAMC	Yes	Yes	No	No
2	Castle Point	620A4	VAMC	Yes	Yes	No	No
2	Manhattan	630	VAMC	Yes	Yes	Yes	Yes
2	Brooklyn	630A4	VAMC	Yes	Yes	Yes	Yes
2	St. Albans	630A5	VAMC	Yes	Yes	Yes	Yes

VISN	Facility Name	Station Number	Facility Type	PCMHI Services	Co-located Collaborative Care	Care Management	Both CCC and CM
2	Northport	632	VAMC	Yes	Yes	Yes	Yes
4	Wilmington	460	VAMC	Yes	Yes	Yes	Yes
4	Sussex County*	460GA	LCBOC	Yes*	Yes*	Yes*	Yes*
4	Kent County*	460GC	LCBOC	Yes*	Yes*	Yes*	Yes*
4	Altoona	503	VAMC	Yes	Yes	Yes	Yes
4	Johnstown	503GA	LCBOC	Yes	Yes	Yes	Yes
4	Abie Abraham	529	VAMC	Yes	Yes	Yes	Yes
4	Coatesville	542	VAMC	Yes	Yes	No	No
4	Erie	562	VAMC	Yes	Yes	Yes	Yes
4	Lebanon	595	VAMC	Yes	Yes	Yes	Yes
4	Cumberland County	595GA	VLCBOC	Yes	Yes	Yes	Yes
4	York	595GE	LCBOC	Yes	Yes	Yes	Yes
4	Philadelphia	642	VAMC	Yes	Yes	Yes	Yes
4	Burlington County	642GA	LCBOC	Yes	Yes	Yes	Yes
4	Horsham	642GC	LCBOC	Yes	Yes	Yes	Yes
4	Gloucester County	642GD	LCBOC	Yes	Yes	Yes	Yes
4	Pittsburgh -University Drive	646	VAMC	Yes	Yes	Yes	Yes
4	Heinz	646A4	VAMC	Yes	Yes	Yes	Yes
4	Belmont County	646GA	LCBOC	Yes	No	Yes	No
4	Westmoreland County	646GB	LCBOC	Yes	No	Yes	No
4	Wilkes-Barre	693	VAMC	Yes	Yes	Yes	Yes
4	Allentown	693B4	LCBOC	Yes	Yes	Yes	Yes
5	Baltimore	512	VAMC	Yes	Yes	Yes	Yes
5	Perry Point	512A5	VAMC	Yes	Yes	Yes	Yes
5	Glen Burnie	512GC	LCBOC	Yes	Yes	Yes	Yes
5	Loch Raven	512GD	VAMC	Yes	Yes	Yes	Yes
5	Fort Meade	512GG	LCBOC	Yes	Yes	Yes	Yes
5	Beckley	517	VAMC	Yes	Yes	Yes	Yes
5	Clarksburg	540	VAMC	Yes	Yes	Yes	Yes
5	Huntington	581	VAMC	Yes	Yes	Yes	Yes
5	Charleston	581GB	VLCBOC	Yes	Yes	No	No
5	Martinsburg	613	VAMC	Yes	Yes	Yes	Yes
5	Stephens City	613GC	LCBOC	Yes	Yes	Yes	Yes
5	Fort Detrick	613GG	LCBOC	Yes	Yes	Yes	Yes
5	Washington	688	VAMC	Yes	Yes	Yes	Yes
5	Fort Belvoir	688GA	LCBOC	Yes	Yes	Yes	Yes
5	Southern Prince George's County	688GE	LCBOC	Yes	Yes	Yes	Yes
6	Durham	558	VAMC	Yes	Yes	Yes	Yes
6	Greenville	558GA	VLCBOC	Yes	Yes	Yes	Yes
6	Raleigh	558GB	LCBOC	Yes	Yes	Yes	Yes
6	Hillandale Road	558GE	LCBOC	Yes	Yes	Yes	Yes
6	Raleigh III	558GG	LCBOC	Yes	Yes	Yes	Yes
6	Jacksonville	565GA	LCBOC	Yes	Yes	Yes	Yes
6	Wilmington	565GC	VLCBOC	Yes	Yes	Yes	Yes
6	Cumberland County	565GL	VLCBOC^	Yes	Yes	Yes	Yes
6	Hampton	590	VAMC	Yes	Yes	Yes	Yes
6	Virginia Beach	590GB	VLCBOC	Yes	Yes	Yes	Yes
6	Chesapeake	590GD	VLCBOC	Yes	Yes	Yes	Yes
6	Charles George	637	VAMC	Yes	Yes	Yes	Yes
6	Franklin*	637GA	LCBOC	Yes*	Yes*	Yes*	Yes*
6	Hickory	637GC	LCBOC	Yes	Yes	Yes	Yes
6	Richmond	652	VAMC	Yes	Yes	Yes	Yes
6	Fredericksburg 2	652GB	LCBOC	Yes	Yes	Yes	Yes

VISN	Facility Name	Station Number	Facility Type	PCMHI Services	Co-located Collaborative Care	Care Management	Both CCC and CM
6	Henrico County*	652GC	LCBOC	Yes*	Yes*	Yes*	Yes*
6	Massaponaz*	652GI	LCBOC	Yes*	Yes*	Yes*	Yes*
6	Salem	658	VAMC	Yes	Yes	No	No
6	Salisbury	659	VAMC	Yes	Yes	Yes	Yes
6	Kernersville	659BY	VLCBOC^	Yes	Yes	Yes	Yes
6	South Charlotte	659BZ	VLCBOC^	Yes	Yes	Yes	Yes
6	North Charlotte	659GA	VLCBOC	Yes	Yes	Yes	Yes
7	Atlanta	508	VAMC	Yes	Yes	Yes	Yes
7	Fort McPherson	508GA	VAMC	Yes	Yes	Yes	Yes
7	Oakwood	508GE	LCBOC	Yes	Yes	Yes	Yes
7	West Cobb County	508GF	LCBOC	Yes	Yes	Yes	Yes
7	Stockbridge	508GG	LCBOC	Yes	Yes	Yes	Yes
7	Lawrenceville	508GH	VLCBOC	Yes	Yes	Yes	Yes
7	Newnan	508GI	LCBOC	Yes	Yes	Yes	Yes
7	Trinka Davis Veterans Village	508GK	VAMC	Yes	Yes	Yes	Yes
7	Northeast Cobb County*	508GO	LCBOC	Yes*	Yes*	Yes*	Yes*
7	Gwinnett County	508QE	LCBOC	Yes	Yes	Yes	Yes
7	Atlanta	508QF	VLCBOC	Yes	Yes	Yes	Yes
7	Charlie Norwood	509	VAMC	No	No	No	No
7	Augusta -Uptown	509A0	VAMC	Yes	Yes	No	No
7	Athens	509GA	LCBOC	Yes	Yes	No	No
7	Birmingham	521	VAMC	Yes	Yes	Yes	Yes
7	Huntsville	521GA	VLCBOC	Yes	Yes	No	No
7	Birmingham	521GJ	VLCBOC	Yes	Yes	Yes	Yes
7	Charleston	534	VAMC	Yes	Yes	Yes	Yes
7	Savannah	534BY	VLCBOC	Yes	Yes	Yes	Yes
7	Myrtle Beach	534GB	VLCBOC	Yes	Yes	Yes	Yes
7	Beaufort	534GC	LCBOC	Yes	Yes	Yes	Yes
7	Goose Creek	534GD	VLCBOC	Yes	Yes	Yes	Yes
7	Hinesville	534GE	LCBOC	Yes	Yes	Yes	Yes
7	Trident 1	534GF	VLCBOC	Yes	Yes	Yes	Yes
7	Columbia	544	VAMC	Yes	Yes	Yes	Yes
7	Greenville	544BZ	VLCBOC	Yes	Yes	Yes	Yes
7	Florence	544GB	LCBOC	Yes	Yes	Yes	Yes
7	Rock Hill	544GC	LCBOC	No	No	No	No
7	Anderson	544GD	LCBOC	Yes	Yes	No	No
7	Sumter	544GF	LCBOC	Yes	Yes	No	No
7	Spartanburg	544GG	LCBOC	Yes	Yes	No	No
7	Dublin	557	VAMC	Yes	Yes	No	No
7	Macon	557GA	VLCBOC	Yes	Yes	No	No
7	Albany*	557GB	LCBOC	Yes*	Yes*	No*	No*
7	Perry*	557HA	LCBOC	Yes*	Yes*	No*	No*
7	Central Alabama -Tuskegee	619A4	VAMC	Yes	Yes	No	No
7	Columbus	619GA	LCBOC	Yes	Yes	No	No
7	Wiregrass	619GD	LCBOC	Yes	Yes	No	No
7	Central Alabama Montgomery	619GF	VLCBOC	Yes	Yes	No	No
7	Fort Benning	619QB	VLCBOC	Yes	Yes	No	No
7	Tuscaloosa	679	VAMC	Yes	Yes	Yes	Yes
8	Bay Pines	516	VAMC	Yes	Yes	Yes	Yes
8	Lee County	516BZ	VLCBOC^	Yes	Yes	Yes	Yes
8	Sarasota	516GA	VLCBOC	Yes	Yes	Yes	Yes
8	Palm Harbor	516GC	LCBOC	Yes	Yes	Yes	Yes
8	Bradenton	516GD	VLCBOC	Yes	Yes	Yes	Yes

VISN	Facility Name	Station Number	Facility Type	PCMHI Services	Co-located Collaborative Care	Care Management	Both CCC and CM
8	Port Charlotte	516GE	LCBOC	Yes	Yes	Yes	Yes
8	Naples	516GF	LCBOC	Yes	Yes	Yes	Yes
8	Sebring*	516GH	LCBOC	Yes*	Yes*	Yes*	Yes*
8	Miami	546	VAMC	Yes	Yes	Yes	Yes
8	Sunrise	546BZ	VLCBOC	Yes	Yes	Yes	Yes
8	Homestead	546GC	LCBOC	Yes	Yes	Yes	Yes
8	West Palm Beach	548	VAMC	Yes	Yes	Yes	Yes
8	Fort Pierce	548GA	LCBOC	Yes	Yes	Yes	Yes
8	Delray Beach	548GB	LCBOC	Yes	Yes	Yes	Yes
8	Stuart	548GC	LCBOC	Yes	Yes	Yes	Yes
8	Gainesville	573	VAMC	Yes	Yes	Yes	Yes
8	Lake City	573A4	VAMC	No	No	No	No
8	Jacksonville 1	573BY	VLCBOC	Yes	Yes	Yes	Yes
8	Valdosta	573GA	LCBOC	Yes	Yes	Yes	Yes
8	Ocala	573GD	VLCBOC	Yes	Yes	Yes	Yes
8	Leo C. Chase Jr.	573GE	LCBOC	No	No	No	No
8	Sergeant Ernest I. "Boots" Thomas	573GF	VLCBOC	Yes	Yes	Yes	Yes
8	The Villages	573GI	VLCBOC	Yes	Yes	Yes	Yes
8	Jacksonville Southpoint	573QG	VLCBOC	Yes	Yes	Yes	Yes
8	Jacksonville 2	573QJ	VLCBOC	Yes	Yes	Yes	Yes
8	Lake City*	573QK	LCBOC	No*	No*	No*	No*
8	San Juan	672	VAMC	Yes	Yes	Yes	Yes
8	Eurípides Rubio	672B0	VLCBOC	Yes	Yes	Yes	Yes
8	Mayaguez	672BZ	VLCBOC	Yes	Yes	Yes	Yes
8	Tampa	673	VAMC	Yes	Yes	Yes	Yes
8	New Port Richey	673BZ	VLCBOC	Yes	Yes	Yes	Yes
8	Lakeland	673GB	VLCBOC	Yes	Yes	Yes	Yes
8	Brooksville	673GC	LCBOC	Yes	Yes	Yes	Yes
8	South Hillsborough	673GG	VLCBOC	Yes	Yes	Yes	Yes
8	Lecanto	673GH	LCBOC	Yes	Yes	Yes	Yes
8	Hidden River	673QJ	VLCBOC	Yes	Yes	Yes	Yes
8	Orlando	675	VAMC	Yes	Yes	Yes	Yes
8	Viera	675GA	VLCBOC^	Yes	Yes	Yes	Yes
8	Daytona Beach	675GB	VLCBOC	Yes	Yes	Yes	Yes
8	Kissimmee	675GC	LCBOC	Yes	Yes	Yes	Yes
8	Deltona	675GD	LCBOC	Yes	Yes	Yes	Yes
8	Tavares	675GE	LCBOC	Yes	Yes	Yes	Yes
8	Clermont*	675GF	LCBOC	Yes*	Yes*	Yes*	Yes*
8	Lake Baldwin	675GG	VLCBOC	Yes	Yes	Yes	Yes
9	Lexington-Leestown	596	VAMC	Yes	Yes	Yes	Yes
9	Somerset	596GA	LCBOC	Yes	Yes	Yes	Yes
9	Robley Rex	603	VAMC	Yes	Yes	Yes	Yes
9	Fort Knox	603GA	LCBOC	Yes	Yes	Yes	Yes
9	New Albany	603GB	LCBOC	Yes	Yes	Yes	Yes
9	Greenwood	603GC	LCBOC	Yes	Yes	Yes	Yes
9	Stonybrook	603GD	LCBOC	Yes	Yes	Yes	Yes
9	Newburg	603GE	LCBOC	Yes	Yes	Yes	Yes
9	Memphis	614	VAMC	Yes	Yes	Yes	Yes
9	Covington	614GE	LCBOC	Yes	Yes	Yes	Yes
9	Nonconnah Boulevard	614GF	VLCBOC	Yes	Yes	Yes	Yes
9	Jackson	614GG	LCBOC	Yes	Yes	Yes	Yes
9	Mountain Home	621	VAMC	Yes	Yes	Yes	Yes
9	William C. Tallent	621BY	VLCBOC	Yes	Yes	Yes	Yes

VISN	Facility Name	Station Number	Facility Type	PCMHI Services	Co-located Collaborative Care	Care Management	Both CCC and CM
9	Nashville	626	VAMC	Yes	Yes	Yes	Yes
9	Murfreesboro	626A4	VAMC	Yes	Yes	Yes	Yes
9	Clarksville	626GE	VLCBOC	Yes	Yes	Yes	Yes
9	Chattanooga	626GF	VLCBOC	Yes	Yes	Yes	Yes
9	Cookeville	626GH	LCBOC	No	No	No	No
9	International Plaza	626GO	VLCBOC	Yes	Yes	Yes	Yes
9	Charlotte Avenue	626QB	LCBOC	Yes	Yes	Yes	Yes
10	Ann Arbor	506	VAMC	Yes	Yes	Yes	Yes
10	Toledo	506GA	VLCBOC	Yes	Yes	No	No
10	Battle Creek	515	VAMC	Yes	Yes	Yes	Yes
10	Wyoming	515BY	VLCBOC	Yes	Yes	Yes	Yes
10	Muskegon	515GA	LCBOC	Yes	Yes	Yes	Yes
10	Chillicothe	538	VAMC	Yes	Yes	No	No
10	Cincinnati	539	VAMC	Yes	Yes	Yes	Yes
10	Clermont County	539GB	LCBOC	Yes	Yes	Yes	Yes
10	Cleveland	541	VAMC	Yes	Yes	Yes	Yes
10	Canton	541BY	VLCBOC	Yes	Yes	Yes	Yes
10	Youngstown	541BZ	VLCBOC	Yes	Yes	Yes	Yes
10	Lorain	541GB	LCBOC	Yes	Yes	No	No
10	Mansfield	541GD	LCBOC	Yes	Yes	No	No
10	Lake County	541GF	LCBOC	Yes	Yes	Yes	Yes
10	Akron	541GG	VLCBOC	Yes	Yes	Yes	Yes
10	Parma	541GL	VLCBOC	Yes	Yes	No	No
10	Dayton	552	VAMC	Yes	Yes	Yes	Yes
10	Detroit	553	VAMC	Yes	Yes	No	No
10	Indianapolis	583	VAMC	Yes	Yes	Yes	Yes
10	Bloomington*	583GB	LCBOC	Yes*	Yes*	Yes*	Yes*
10	Indianapolis West	583GD	LCBOC	Yes	Yes	Yes	Yes
10	Marion	610	VAMC	Yes	Yes	Yes	Yes
10	Fort Wayne	610A4	VAMC	Yes	Yes	Yes	Yes
10	St. Joseph County	610BY	VLCBOC	Yes	Yes	Yes	Yes
10	Saginaw	655	VAMC	Yes	Yes	Yes	Yes
10	Traverse City	655GB	LCBOC	Yes	Yes	Yes	Yes
10	Columbus	757	VLCBOC^	Yes	Yes	No	No
12	Chicago	537	VAMC	Yes	Yes	Yes	Yes
12	Crown Point	537BY	VLCBOC	Yes	Yes	Yes	Yes
12	Danville	550	VAMC	Yes	Yes	Yes	Yes
12	Peoria	550BY	VLCBOC	Yes	Yes	Yes	Yes
12	North Chicago	556	VAMC	Yes	Yes	Yes	Yes
12	Hines	578	VAMC	Yes	Yes	Yes	Yes
12	Joliet	578GA	LCBOC	Yes	Yes	Yes	Yes
12	Aurora	578GD	LCBOC	Yes	Yes	Yes	Yes
12	Oak Lawn*	578GG	LCBOC	Yes*	Yes*	Yes*	Yes*
12	Iron Mountain	585	VAMC	Yes	Yes	Yes	Yes
12	Madison	607	VAMC	No	No	No	No
12	Madison West	607GG	VLCBOC	Yes	Yes	Yes	Yes
12	Rockford	607HA	LCBOC	Yes	Yes	Yes	Yes
12	Tomah	676	VAMC	Yes	Yes	Yes	Yes
12	La Crosse	676GC	LCBOC	Yes	Yes	Yes	Yes
12	Wisconsin Rapids	676GD	LCBOC	Yes	Yes	Yes	Yes
12	Milwaukee	695	VAMC	Yes	Yes	Yes	Yes
12	Appleton	695BY	VLCBOC	Yes	Yes	Yes	Yes
12	Green Bay	695GD	VLCBOC^	Yes	Yes	Yes	Yes

VISN	Facility Name	Station Number	Facility Type	PCMHI Services	Co-located Collaborative Care	Care Management	Both CCC and CM
15	Kansas City	589	VAMC	Yes	Yes	Yes	Yes
15	Columbia	589A4	VAMC	Yes	Yes	Yes	Yes
15	Topeka	589A5	VAMC	Yes	Yes	Yes	Yes
15	Leavenworth	589A6	VAMC	Yes	Yes	Yes	Yes
15	Wichita	589A7	VAMC	Yes	Yes	Yes	Yes
15	Jefferson City	589G8	LCBOC	No	No	No	No
15	Waynesville*	589GF	LCBOC	Yes*	Yes*	No*	No*
15	Honor	589JF	VLCBOC	Yes	Yes	Yes	Yes
15	John J. Cochran Veterans Hospital	657	VAMC	Yes	Yes	No	No
15	St. Louis -Jefferson Barracks	657A0	VAMC	Yes	Yes	No	No
15	Poplar Bluff	657A4	VAMC	Yes	Yes	Yes	Yes
15	Marion	657A5	VAMC	Yes	Yes	Yes	Yes
15	St. Clair County*	657GA	LCBOC	Yes*	Yes*	No*	No*
15	St. Louis County*	657GB	LCBOC	Yes*	Yes*	No*	No*
15	St. Charles County*	657GD	LCBOC	Yes*	Yes*	No*	No*
15	Evansville	657GJ	VLCBOC^	Yes	Yes	Yes	Yes
15	Washington Avenue*	657GX	LCBOC	Yes*	Yes*	No*	No*
15	Olive Street	657QA	LCBOC	Yes	Yes	No	No
15	Heartland Street	657QD	LCBOC	Yes	Yes	Yes	Yes
16	Alexandria	502	VAMC	Yes	Yes	Yes	Yes
16	Lafayette	502GB	LCBOC	Yes	Yes	Yes	Yes
16	Biloxi	520	VAMC	Yes	Yes	Yes	Yes
16	Pensacola	520BZ	VLCBOC	Yes	Yes	Yes	Yes
16	Mobile	520GA	VLCBOC	Yes	Yes	Yes	Yes
16	Panama City Beach	520GB	LCBOC	Yes	Yes	Yes	Yes
16	Eglin Air Force Base	520GC	VLCBOC	Yes	Yes	Yes	Yes
16	Fayetteville	564	VAMC	Yes	Yes	Yes	Yes
16	Springfield	564BY	VLCBOC	Yes	Yes	Yes	Yes
16	Fort Smith	564GB	LCBOC	Yes	Yes	Yes	Yes
16	Branson	564GC	LCBOC	Yes	Yes	Yes	Yes
16	Joplin	564GF	LCBOC	Yes	Yes	Yes	Yes
16	Michael E. DeBakey	580	VAMC	Yes	Yes	Yes	Yes
16	Beaumont	580BY	LCBOC	Yes	Yes	No	No
16	Charles Wilson	580BZ	LCBOC	Yes	Yes	No	No
16	Conroe	580GD	VLCBOC	Yes	Yes	Yes	Yes
16	Katy	580GE	VLCBOC	Yes	Yes	No	No
16	Richmond	580GG	LCBOC	No	No	No	No
16	Tomball	580GH	VLCBOC	Yes	Yes	Yes	Yes
16	Texas City	580GJ	LCBOC	Yes	Yes	Yes	Yes
16	Jackson	586	VAMC	Yes	Yes	Yes	Yes
16	Hattiesburg	586GD	LCBOC	Yes	Yes	Yes	Yes
16	Little Rock	598	VAMC	Yes	Yes	Yes	Yes
16	North Little Rock	598A0	VAMC	Yes	Yes	Yes	Yes
16	Hot Springs	598GC	LCBOC	Yes	Yes	Yes	Yes
16	Conway	598GG	LCBOC	Yes	Yes	Yes	Yes
16	New Orleans	629	VAMC	Yes	Yes	Yes	Yes
16	Baton Rouge	629BY	VLCBOC	Yes	Yes	Yes	Yes
16	Shreveport	667	VAMC	Yes	Yes	Yes	Yes
16	Monroe	667GB	LCBOC	Yes	Yes	Yes	Yes
16	Longview	667GC	LCBOC	Yes	Yes	Yes	Yes
17	Amarillo	504	VAMC	Yes	Yes	Yes	Yes
17	Lubbock	504BY	LCBOC	Yes	Yes	Yes	Yes
17	Big Spring	519	VAMC	Yes	Yes	Yes	Yes

VISN	Facility Name	Station Number	Facility Type	PCMHI Services	Co-located Collaborative Care	Care Management	Both CCC and CM
17	Abilene	519HC	LCBOC	Yes	Yes	Yes	Yes
17	Dallas	549	VAMC	Yes	Yes	Yes	Yes
17	Bonham	549A4	VAMC	Yes	Yes	Yes	Yes
17	Garland	549A5	VAMC	Yes	Yes	Yes	Yes
17	Fort Worth	549BY	VLCBOC	Yes	Yes	Yes	Yes
17	Denton	549GD	LCBOC	Yes	Yes	Yes	Yes
17	Polk Street	549GK	LCBOC	Yes	Yes	Yes	Yes
17	Plano	549GL	LCBOC	Yes	Yes	Yes	Yes
17	Tyler Broadway	549QC	LCBOC	Yes	Yes	Yes	Yes
17	San Antonio	671	VAMC	Yes	Yes	Yes	Yes
17	Kerrville	671A4	VAMC	Yes	Yes	Yes	Yes
17	Frank M. Tejeda	671BY	VLCBOC	Yes	Yes	Yes	Yes
17	South Bexar County	671GF	LCBOC	Yes	Yes	Yes	Yes
17	San Antonio	671GK	VLCBOC	Yes	Yes	Yes	Yes
17	New Braunfels	671GL	LCBOC	Yes	Yes	Yes	Yes
17	North Central Federal	671GO	VLCBOC	Yes	Yes	Yes	Yes
17	Balcones Heights	671GP	VLCBOC	Yes	Yes	Yes	Yes
17	Shavano Park	671GQ	LCBOC	Yes	Yes	Yes	Yes
17	Temple	674	VAMC	Yes	Yes	Yes	Yes
17	Waco	674A4	VAMC	Yes	Yes	No	No
17	Austin	674BY	VLCBOC	Yes	Yes	Yes	Yes
17	Cedar Park	674GD	VLCBOC	Yes	Yes	Yes	Yes
17	Temple	674GF	LCBOC	Yes	Yes	No	No
17	Harlingen	740GA	VLCBOC	Yes	Yes	No	No
17	McAllen	740GB	VLCBOC	Yes	Yes	Yes	Yes
17	Corpus Christi	740GC	VLCBOC	Yes	Yes	Yes	Yes
17	El Paso	756	VLCBOC^	Yes	Yes	Yes	Yes
17	El Paso Eastside	756GB	LCBOC	Yes	Yes	Yes	Yes
19	Fort Harrison	436	VAMC	Yes	Yes	Yes	Yes
19	Miles City*	436A4	VAMC	Yes*	Yes*	Yes*	Yes*
19	Great Falls	436GB	LCBOC	Yes	Yes	Yes	Yes
19	David J. Thatcher	436GC	LCBOC	Yes	Yes	Yes	Yes
19	Kalispell	436GF	LCBOC	Yes	Yes	Yes	Yes
19	Billings Spring Creek	436GN	LCBOC	Yes	Yes	Yes	Yes
19	Cheyenne	442	VAMC	Yes	Yes	Yes	Yes
19	Loveland	442GD	VLCBOC	Yes	Yes	No	No
19	Rocky Mountain Regional	554	VAMC	Yes	Yes	Yes	Yes
19	Aurora	554GB	LCBOC	Yes	Yes	Yes	Yes
19	Golden	554GC	VLCBOC	Yes	Yes	Yes	Yes
19	PFC James Dunn	554GD	LCBOC	Yes	Yes	Yes	Yes
19	Colorado Springs	554GE	VLCBOC	Yes	Yes	Yes	Yes
19	Grand Junction	575	VAMC	Yes	Yes	No	No
19	Muskogee	623	VAMC	Yes	Yes	Yes	Yes
19	Tulsa	623BY	VLCBOC	Yes	Yes	Yes	Yes
19	Oklahoma City	635	VAMC	Yes	Yes	Yes	Yes
19	Lawton	635GA	VLCBOC	No	No	No	No
19	North May	635QA	LCBOC	Yes	No	No	No
19	South Oklahoma City	635QB	VLCBOC	Yes	Yes	Yes	Yes
19	Salt Lake City	660	VAMC	Yes	Yes	Yes	Yes
19	Ogden	660GB	LCBOC	Yes	Yes	Yes	Yes
19	South Jordan	660GJ	LCBOC	Yes	Yes	Yes	Yes
19	Sheridan	666	VAMC	Yes	Yes	Yes	Yes
20	Anchorage	463	VAMC	Yes	Yes	Yes	Yes

VISN	Facility Name	Station Number	Facility Type	PCMHI Services	Co-located Collaborative Care	Care Management	Both CCC and CM
20	Boise	531	VAMC	Yes	Yes	No	No
20	Caldwell	531GG	LCBOC	Yes	Yes	No	No
20	Portland	648	VAMC	Yes	Yes	Yes	Yes
20	Portland -Vancouver	648A4	VAMC	Yes	Yes	Yes	Yes
20	Bend	648GA	LCBOC	Yes	Yes	Yes	Yes
20	Salem	648GB	VLCBOC	Yes	No	Yes	No
20	Fairview	648GE	LCBOC	Yes	Yes	Yes	Yes
20	Hillsboro	648GF	VLCBOC	Yes	Yes	Yes	Yes
20	West Linn	648GG	LCBOC	Yes	Yes	Yes	Yes
20	Roseburg	653	VAMC	Yes	Yes	No	No
20	Eugene	653BY	VLCBOC^	Yes	Yes	No	No
20	Seattle	663	VAMC	Yes	Yes	Yes	Yes
20	American Lake	663A4	VAMC	Yes	Yes	Yes	Yes
20	Silverdale	663GB	LCBOC	Yes	Yes	Yes	Yes
20	Mount Vernon	663GC	VLCBOC	Yes	Yes	Yes	Yes
20	Spokane	668	VAMC	Yes	Yes	Yes	Yes
20	Coeur d 'Alene	668GB	LCBOC	Yes	Yes	Yes	Yes
20	Walla Walla	687	VAMC	Yes	Yes	Yes	Yes
20	Richland*	687GA	LCBOC	Yes*	Yes*	Yes*	Yes*
20	White City	692	VAMC	Yes	Yes	No	No
21	Honolulu	459	VAMC	Yes	Yes	Yes	Yes
21	Fresno	570	VAMC	Yes	Yes	Yes	Yes
21	Tulare	570GB	LCBOC	Yes	Yes	Yes	Yes
21	North Las Vegas	593	VAMC	Yes	Yes	Yes	Yes
21	Northwest Las Vegas	593GD	VLCBOC	Yes	Yes	Yes	Yes
21	Southeast Las Vegas	593GE	VLCBOC	Yes	Yes	Yes	Yes
21	Southwest Las Vegas	593GF	VLCBOC	Yes	Yes	Yes	Yes
21	Northeast Las Vegas	593GG	VLCBOC	Yes	Yes	Yes	Yes
21	Sacramento	612A4	VAMC	Yes	Yes	Yes	Yes
21	Redding	612B4	VLCBOC	Yes	Yes	Yes	Yes
21	Oakland	612BY	VLCBOC	Yes	Yes	No	No
21	Fairfield	612GD	LCBOC	Yes	Yes	Yes	Yes
21	Mare Island	612GE	LCBOC	Yes	Yes	Yes	Yes
21	Martinez	612GF	VAMC	Yes	Yes	Yes	Yes
21	Chico	612GG	LCBOC	Yes	Yes	Yes	Yes
21	McClellan	612GH	VLCBOC	Yes	Yes	Yes	Yes
21	Palo Alto	640	VAMC	Yes	Yes	No	No
21	Palo Alto -Livermore	640A4	VAMC	Yes	Yes	No	No
21	San Jose	640BY	VLCBOC	Yes	Yes	No	No
21	Stockton	640HA	LCBOC	Yes	Yes	No	No
21	Modesto	640HB	LCBOC	Yes	Yes	No	No
21	Monterey	640HC	VLCBOC	Yes	Yes	No	No
21	Reno	654	VAMC	Yes	Yes	Yes	Yes
21	Reno East	654GE	LCBOC	Yes	Yes	Yes	Yes
21	North Reno*	654GF	LCBOC	Yes*	Yes*	Yes*	Yes*
21	San Francisco	662	VAMC	Yes	Yes	No	No
21	Santa Rosa	662GA	LCBOC	Yes	No	Yes	No
22	Albuquerque	501	VAMC	Yes	Yes	Yes	Yes
22	Tibor Rubin	600	VAMC	Yes	Yes	Yes	Yes
22	Santa Ana	600GB	VLCBOC	Yes	Yes	Yes	Yes
22	Loma Linda	605	VAMC	No	No	No	No
22	Loma Linda CBOC	605BZ	VLCBOC	Yes	Yes	Yes	Yes
22	Victorville	605GA	LCBOC	Yes	Yes	Yes	Yes

VISN	Facility Name	Station Number	Facility Type	PCMHI Services	Co-located Collaborative Care	Care Management	Both CCC and CM
22	Murrieta	605GB	VLCBOC	Yes	Yes	No	No
22	Palm Desert	605GC	LCBOC	Yes	Yes	Yes	Yes
22	Rancho Cucamonga	605GE	LCBOC	Yes	Yes	Yes	Yes
22	Phoenix	644	VAMC	Yes	Yes	Yes	Yes
22	Southeast	644BY	VLCBOC	Yes	Yes	Yes	Yes
22	Northwest	644GA	VLCBOC	Yes	Yes	Yes	Yes
22	Southwest	644GC	LCBOC	Yes	Yes	Yes	Yes
22	Thunderbird	644GE	LCBOC	Yes	Yes	No	No
22	Phoenix Midtown	644GH	VLCBOC	Yes	Yes	Yes	Yes
22	Prescott	649	VAMC	Yes	Yes	No	No
22	San Diego	664	VAMC	Yes	Yes	Yes	Yes
22	Mission Valley	664BY	VLCBOC	Yes	Yes	Yes	Yes
22	Oceanside	664GB	VLCBOC	Yes	Yes	Yes	Yes
22	Chula Vista	664GC	VLCBOC	Yes	Yes	Yes	Yes
22	Escondido	664GD	LCBOC	Yes	Yes	Yes	Yes
22	Tucson	678	VAMC	Yes	Yes	No	No
22	Sierra Vista	678GA	LCBOC	Yes	Yes	No	No
22	Yuma	678GB	LCBOC	Yes	Yes	No	No
22	Northwest Tucson	678GF	LCBOC	Yes	Yes	No	No
22	West Los Angeles	691	VAMC	Yes	Yes	Yes	Yes
22	Sepulveda	691A4	VAMC	Yes	Yes	Yes	Yes
22	Bakersfield	691GD	LCBOC	Yes	Yes	Yes	Yes
22	Los Angeles	691GE	VLCBOC	Yes	Yes	Yes	Yes
22	Antelope Valley*	691GG	LCBOC	Yes*	Yes*	No*	No*
22	Santa Maria	691GL	LCBOC	Yes	Yes	Yes	Yes
22	Oxnard	691GM	LCBOC	Yes	Yes	Yes	Yes
23	Fargo	437	VAMC	Yes	Yes	No	No
23	Sioux Falls	438	VAMC	Yes	Yes	Yes	Yes
23	Fort Meade	568	VAMC	Yes	Yes	Yes	Yes
23	Hot Springs	568A4	VAMC	Yes	Yes	Yes	Yes
23	Rapid City	568GA	LCBOC	Yes	Yes	Yes	Yes
23	Minneapolis	618	VAMC	Yes	Yes	Yes	Yes
23	Twin Ports	618BY	LCBOC	Yes	Yes	Yes	Yes
23	Maplewood	618GD	LCBOC	Yes	Yes	Yes	Yes
23	Rochester*	618GG	LCBOC	No*	No*	No*	No*
23	Northwest Metro	618GI	LCBOC	Yes	Yes	Yes	Yes
23	Omaha	636	VAMC	Yes	Yes	Yes	Yes
23	Grand Island	636A4	VAMC	Yes	Yes	Yes	Yes
23	Lincoln	636A5	VLCBOC	Yes	Yes	Yes	Yes
23	Des Moines	636A6	VAMC	Yes	Yes	Yes	Yes
23	Iowa City	636A8	VAMC	Yes	Yes	Yes	Yes
23	Quad Cities	636GF	LCBOC	Yes	Yes	Yes	Yes
23	Bellevue	636GL	LCBOC	Yes	Yes	Yes	Yes
23	Cedar Rapids*	636GN	LCBOC	Yes*	Yes*	Yes*	Yes*
23	Coralville	636GW	LCBOC	Yes	Yes	Yes	Yes
23	St. Cloud	656	VAMC	Yes	Yes	Yes	Yes
23	Brainerd	656GA	LCBOC	Yes	Yes	Yes	Yes

Definitions

Presence of PCMHI Services:

Yes - Reports PCMHI services in-person and/or provided by virtual face-to-face via video telehealth (VTEL) by staff based on-site or off-site and/or by VA Video Connect (VVC) by staff based on-site or off-site and/or by telephone by staff based on-site. **No** - Reports PCMHI services delivered exclusively by telephone by PCMHI staff based at another site or no PCMHI services available at the site.

Co-located Collaborative Care (CCC):

Yes - Reports in-person CCC services by prescribing psychiatric provider(s) and/or behavioral health provider(s), including services provided by virtual

VISN	Facility Name	Station Number	Facility Type	PCMH Services	Co-located Collaborative Care	Care Management	Both CCC and CM
------	---------------	----------------	---------------	---------------	-------------------------------	-----------------	-----------------

face-to-face care via video telehealth [VTEL] or VA Video Connect [VVC]. **No** - Reports “no”/“do not know” for both co-located prescribers and behavioral health providers.

Care Management (CM):

Yes - Reports on-site CM services or the receipt of CM services from an off-site location. **No** - Reports “no” or “do not know” for both on-site CM services and the receipt of CM services from an off-site location.

Both CCC and CM:

Yes - Yes for CCC and CM (as defined above). **No** - No for CCC or No for CM (as defined above).

**Primary Care-Mental Health Integration: Select Findings from the 2022 PACT PCMHI Evaluation Program Assessment
and Site Information Regarding Same-Day Access for PCMHI Services, FY22Q1 - Q2, by Facility**

Office of Mental Health Services and Suicide Prevention, SMITREC, National Primary Care - Mental Health Integration (PCMHI) Evaluation

Points of contact: John McCarthy (John.McCarthy2@va.gov); Ben Szymanski (Benjamin.Szymanski@va.gov)

Date: 6/14/2022

Site Reporting Regarding Compliance with Uniform Mental Health Services Handbook (2008) Requirements in 2022 (Program Assessment):

PCMHI Services, including Co-located Collaborative Care (CCC) and Care Management (CM) Services, are required at VA Medical Centers

(VAMCs) with Primary Care clinics, Very Large CBOCs (serving 10,000+; VLCBOCs), and Large CBOCs (serving 5,000-9,999; LCBOCs).

Program assessment fielded 2/24/2022 to 5/4/2022 regarding services available as of 2/1/2022; 100% response rate; N = 455 surveyed divisions.

Information regarding Same-Day Access for PCMHI is derived from the PCMHI Same-Day Access Dashboard.

[PCMHI Same-Day Access Dashboard](#)

			Select Reports from the 2022 PACT PCMHI Program Assessment*									PCMHI Same-Day Access, FY22Q1 - Q2**		
VISN	Facility Number	Facility Name	Facility Type	Both CCC and CM	Percentage of time PACT PCMHI provider available for warm hand-offs	Typical wait time for appointment with PACT PCMHI provider on same day as PACT PC appointment	PACT PCMHI providers conduct new patient assessments as brief functional assessments (<30 minutes)	Average length patient encounters with a PACT PCMHI CCC prescribing psychiatric provider	Average length patient encounters with a PACT PCMHI CCC behavioral health provider	Percentage of PACT PCMHI staff co-located within PACT PC clinics	Number of new PCMHI patients with a qualifying same-day encounter 10/4/21 - 4/3/22 (Numerator)	Number of patients with initial individual PCMHI encounter 10/4/21 - 4/3/22 (Denominator)	Same-Day Access (Numerator / Denominator) %	
1	402	Togus	VAMC	No	40%	21 to 40 minutes	Often	Do not have CCC prescribers	31 to 60 minutes	50%	25	170	14.7%	
1	402GE	Lewiston	LCBOC	No	10%	>1 hour	Often	No CCC services	No CCC services	0%	2	67	3.0%	
1	402HB	Bangor	LCBOC	No	100%	20 minutes or less	Often	No CCC services	No CCC services	100%	16	84	19.0%	
1	405	White River Junction	VAMC	Yes	100%	20 minutes or less	Often	31 to 60 minutes	31 to 60 minutes	100%	59	285	20.7%	
1	405HA	Burlington Lakeside	LCBOC	No	100%	21 to 40 minutes	Half the time	31 to 60 minutes	31 to 60 minutes	100%	10	137	7.3%	
1	518	Bedford	VAMC	Yes	100%	20 minutes or less	Sometimes	31 to 60 minutes	30 minutes or less	10%	95	213	44.6%	
1	523	Jamaica Plain	VAMC	Yes	80%	20 minutes or less	Often	31 to 60 minutes	30 minutes or less	80%	32	149	21.5%	
1	523A4	West Roxbury	VAMC	Yes	80%	20 minutes or less	Often	31 to 60 minutes	30 minutes or less	80%	23	91	25.3%	
1	523A5	Brockton	VAMC	Yes	80%	20 minutes or less	Often	31 to 60 minutes	30 minutes or less	80%	33	172	19.2%	
1	523BY	Lowell	LCBOC	No	20%	20 minutes or less	Often	No CCC services	No CCC services	0%	4	9	44.4%	
1	608	Manchester	VAMC	Yes	30%	41 to 60 minutes	Always	30 minutes or less	30 minutes or less	100%	54	381	14.2%	
1	631	VA Central Western Massachusetts HCS	VAMC	Yes	90%	21 to 40 minutes	Half the time	Do not have CCC prescribers	31 to 60 minutes	80%	5	57	8.8%	
1	631BY	Springfield	LCBOC	No	80%	20 minutes or less	Often	Do not have CCC prescribers	31 to 60 minutes	70%	11	61	18.0%	
1	631GE	Worcester	LCBOC	Yes	70%	21 to 40 minutes	Often	Do not have CCC prescribers	30 minutes or less	50%	113	177	63.8%	
1	650	Providence	VAMC	Yes	100%	20 minutes or less	Always	30 minutes or less	30 minutes or less	50%	135	421	32.1%	

			Select Reports from the 2022 PACT PCMH Program Assessment*									PCMH Same-Day Access, FY22Q1 - Q2**		
							PACT PCMH providers conduct new patient assessments as brief functional assessments (<30 minutes)	Average length patient encounters with a PACT PCMH CCC prescribing psychiatric provider	Average length patient encounters with a PACT PCMH CCC behavioral health provider	Percentage of PACT PCMH staff co-located within PACT PC clinics	Number of new PCMH patients with a qualifying same-day encounter 10/4/21 - 4/3/22 (Numerator)	Number of patients with initial individual PCMH encounter 10/4/21 - 4/3/22 (Denominator)	Same-Day Access (Numerator / Denominator) %	
VISN	Facility Number	Facility Name	Facility Type	Both CCC and CM	Percentage of time PACT PCMH provider available for warm hand-offs	Typical wait time for appointment with PACT PCMH provider on same day as PACT PC appointment								
1	689	West Haven	VAMC	Yes	80%	21 to 40 minutes	Half the time	31 to 60 minutes	30 minutes or less	100%	47	238	19.7%	
1	689A4	Newington	VAMC	Yes	90%	Do not know	Often	30 minutes or less	30 minutes or less	0%	145	481	30.1%	
1	689HC	New London	LCBOC	No	PCMH not reported	PCMH not reported	PCMH not reported	PCMH not reported	PCMH not reported	PCMH not reported	3	187	1.6%	
2	526	Bronx	VAMC	Yes	100%	20 minutes or less	Always	31 to 60 minutes	30 minutes or less	50%	82	495	16.6%	
2	528	Buffalo	VAMC	Yes	100%	21 to 40 minutes	Often	31 to 60 minutes	31 to 60 minutes	100%	76	397	19.1%	
2	528A4	Batavia	VAMC	Yes	100%	41 to 60 minutes	Often	31 to 60 minutes	31 to 60 minutes	100%	12	99	12.1%	
2	528A5	Canandaigua	VAMC	Yes	100%	20 minutes or less	Half the time	Do not have CCC prescribers	31 to 60 minutes	0%	17	69	24.6%	
2	528A6	Bath	VAMC	Yes	100%	20 minutes or less	Always	Do not have CCC prescribers	30 minutes or less	100%	40	58	69.0%	
2	528A7	Syracuse	VAMC	No	100%	20 minutes or less	Always	Do not have CCC prescribers	30 minutes or less	100%	73	267	27.3%	
2	528A8	Albany	VAMC	No	100%	20 minutes or less	Always	Do not have CCC prescribers	31 to 60 minutes	40%	36	259	13.9%	
2	528GM	Rome	LCBOC	No	100%	20 minutes or less	Always	Do not have CCC prescribers	30 minutes or less	100%	19	115	16.5%	
2	528GN	Binghamton	LCBOC	No	100%	20 minutes or less	Always	Do not have CCC prescribers	30 minutes or less	100%	9	60	15.0%	
2	528QC	Rochester Calkins	VLCBOC	Yes	100%	20 minutes or less	Always	Do not have CCC prescribers	30 minutes or less	50%	73	281	26.0%	
2	561	East Orange	VAMC	Yes	50%	>1 hour	Always	30 minutes or less	30 minutes or less	50%	111	263	42.2%	
2	561A4	Lyons	VAMC	Yes	100%	20 minutes or less	Always	30 minutes or less	30 minutes or less	100%	71	111	64.0%	
2	561BZ	Brick	VLCBOC	Yes	100%	20 minutes or less	Always	Do not know	30 minutes or less	100%	39	153	25.5%	
2	561GD	Hackensack	LCBOC	No	100%	21 to 40 minutes	Often	30 minutes or less	30 minutes or less	100%	76	105	72.4%	
2	620	Montrose	VAMC	No	100%	21 to 40 minutes	Half the time	30 minutes or less	31 to 60 minutes	60%	19	65	29.2%	
2	620A4	Castle Point	VAMC	No	100%	21 to 40 minutes	Half the time	30 minutes or less	31 to 60 minutes	90%	67	158	42.4%	
2	630	Manhattan	VAMC	Yes	90%	20 minutes or less	Always	30 minutes or less	30 minutes or less	30%	92	317	29.0%	
2	630A4	Brooklyn	VAMC	Yes	80%	20 minutes or less	Always	Do not know	30 minutes or less	50%	81	208	38.9%	
2	630A5	St. Albans	VAMC	Yes	100%	20 minutes or less	Always	Do not have CCC prescribers	30 minutes or less	0%	49	133	36.8%	

			Select Reports from the 2022 PACT PCHMI Program Assessment*								PCHMI Same-Day Access, FY22Q1 - Q2**		
VISN	Facility Number	Facility Name	Facility Type	Both CCC and CM	Percentage of time PACT PCHMI provider available for warm hand-offs	Typical wait time for appointment with PACT PCHMI provider on same day as PACT PC appointment	PACT PCHMI providers conduct new patient assessments as brief functional assessments (<30 minutes)	Average length patient encounters with a PACT PCHMI CCC prescribing psychiatric provider	Average length patient encounters with a PACT PCHMI CCC behavioral health provider	Percentage of PACT PCHMI staff co-located within PACT PC clinics	Number of new PCHMI patients with a qualifying same-day encounter 10/4/21 - 4/3/22 (Numerator)	Number of patients with initial individual PCHMI encounter 10/4/21 - 4/3/22 (Denominator)	Same-Day Access (Numerator / Denominator) %
2	632	Northport	VAMC	Yes	90%	20 minutes or less	Often	31 to 60 minutes	30 minutes or less	60%	130	419	31.0%
4	460	Wilmington	VAMC	Yes	90%	20 minutes or less	Often	Do not have CCC prescribers	30 minutes or less	40%	100	142	70.4%
4	460GA	Sussex County	LCBOC	Yes	100%	20 minutes or less	Always	Do not have CCC prescribers	30 minutes or less	0%	15	94	16.0%
4	460GC	Kent County	LCBOC	Yes	100%	20 minutes or less	Always	Do not have CCC prescribers	30 minutes or less	0%	9	101	8.9%
4	503	Altoona	VAMC	Yes	100%	20 minutes or less	Always	30 minutes or less	30 minutes or less	50%	60	156	38.5%
4	503GA	Johnstown	LCBOC	Yes	100%	20 minutes or less	Always	30 minutes or less	30 minutes or less	100%	11	38	28.9%
4	529	Abie Abraham	VAMC	Yes	100%	20 minutes or less	Always	30 minutes or less	30 minutes or less	100%	103	228	45.2%
4	542	Coatesville	VAMC	No	100%	20 minutes or less	Often	Do not have CCC prescribers	30 minutes or less	100%	101	222	45.5%
4	562	Erie	VAMC	Yes	100%	20 minutes or less	Always	31 to 60 minutes	30 minutes or less	100%	236	342	69.0%
4	595	Lebanon	VAMC	Yes	100%	20 minutes or less	Often	31 to 60 minutes	30 minutes or less	80%	212	319	66.5%
4	595GA	Cumberland County	VLCBOC	Yes	80%	20 minutes or less	Always	31 to 60 minutes	30 minutes or less	100%	78	262	29.8%
4	595GE	York	LCBOC	Yes	80%	20 minutes or less	Often	31 to 60 minutes	30 minutes or less	100%	111	214	51.9%
4	642	Philadelphia	VAMC	Yes	100%	20 minutes or less	Always	Do not have CCC prescribers	30 minutes or less	30%	279	772	36.1%
4	642GA	Burlington County	LCBOC	Yes	100%	21 to 40 minutes	Always	Do not have CCC prescribers	30 minutes or less	70%	51	214	23.8%
4	642GC	Horsham	LCBOC	Yes	100%	20 minutes or less	Always	Do not have CCC prescribers	30 minutes or less	80%	73	155	47.1%
4	642GD	Gloucester County	LCBOC	Yes	100%	20 minutes or less	Often	Do not have CCC prescribers	30 minutes or less	0%	40	176	22.7%
4	646	Pittsburgh -University Drive	VAMC	Yes	100%	20 minutes or less	Always	Do not have CCC prescribers	30 minutes or less	80%	137	297	46.1%
4	646A4	Heinz	VAMC	Yes	90%	20 minutes or less	Always	30 minutes or less	30 minutes or less	80%	65	217	30.0%
4	646GA	Belmont County	LCBOC	No	0%	Same day appointments not available	Always	No CCC services	No CCC services	0%	1	14	7.1%
4	646GB	Westmoreland County	LCBOC	No	0%	Same day appointments not available	Always	No CCC services	No CCC services	0%	3	17	17.6%
4	693	Wilkes-Barre	VAMC	Yes	40%	21 to 40 minutes	Half the time	30 minutes or less	30 minutes or less	90%	68	281	24.2%

			Select Reports from the 2022 PACT PCMHI Program Assessment*								PCMHI Same-Day Access, FY22Q1 - Q2**		
							PACT PCMHI providers conduct new patient assessments as brief functional assessments (<30 minutes)	Average length patient encounters with a PACT PCMHI CCC prescribing psychiatric provider	Average length patient encounters with a PACT PCMHI CCC behavioral health provider	Percentage of PACT PCMHI staff co-located within PACT PC clinics	Number of new PCMHI patients with a qualifying same-day encounter 10/4/21 - 4/3/22 (Numerator)	Number of patients with initial individual PCMHI encounter 10/4/21 - 4/3/22 (Denominator)	Same-Day Access (Numerator / Denominator) %
VISN	Facility Number	Facility Name	Facility Type	Both CCC and CM	Percentage of time PACT PCMHI provider available for warm hand-offs	Typical wait time for appointment with PACT PCMHI provider on same day as PACT PC appointment							
4	693B4	Allentown	LCBOC	Yes	30%	21 to 40 minutes	Half the time	30 minutes or less	30 minutes or less	70%	23	167	13.8%
5	512	Baltimore	VAMC	Yes	90%	20 minutes or less	Always	Do not have CCC prescribers	30 minutes or less	50%	184	480	38.3%
5	512A5	Perry Point	VAMC	Yes	100%	20 minutes or less	Always	30 minutes or less	30 minutes or less	50%	44	190	23.2%
5	512GC	Glen Burnie	LCBOC	Yes	90%	20 minutes or less	Often	Do not have CCC prescribers	30 minutes or less	50%	10	99	10.1%
5	512GD	Loch Raven	VAMC	Yes	90%	20 minutes or less	Often	Do not have CCC prescribers	30 minutes or less	50%	33	146	22.6%
5	512GG	Fort Meade	LCBOC	Yes	90%	20 minutes or less	Often	Do not have CCC prescribers	30 minutes or less	50%	41	276	14.9%
5	517	Beckley	VAMC	Yes	100%	20 minutes or less	Always	Do not have CCC prescribers	30 minutes or less	100%	58	128	45.3%
5	540	Clarksburg	VAMC	Yes	90%	20 minutes or less	Always	Do not have CCC prescribers	30 minutes or less	30%	84	139	60.4%
5	581	Huntington	VAMC	Yes	100%	20 minutes or less	Always	Do not have CCC prescribers	30 minutes or less	100%	45	115	39.1%
5	581GB	Charleston	VLCBOC	No	100%	20 minutes or less	Always	Do not have CCC prescribers	30 minutes or less	0%	68	110	61.8%
5	613	Martinsburg	VAMC	Yes	100%	20 minutes or less	Often	Do not have CCC prescribers	30 minutes or less	100%	162	404	40.1%
5	613GC	Stephens City	LCBOC	Yes	100%	20 minutes or less	Always	Do not have CCC prescribers	30 minutes or less	100%	86	163	52.8%
5	613GG	Fort Detrick	LCBOC	Yes	100%	>1 hour	Always	Do not have CCC prescribers	30 minutes or less	0%	51	124	41.1%
5	688	Washington	VAMC	Yes	40%	Do not know	Sometimes	31 to 60 minutes	31 to 60 minutes	10%	100	1321	7.6%
5	688GA	Fort Belvoir	LCBOC	Yes	50%	Do not know	Often	Do not have CCC prescribers	30 minutes or less	30%	4	57	7.0%
5	688GE	Southern Prince George's County	LCBOC	Yes	50%	20 minutes or less	Always	Do not have CCC prescribers	Do not have CCC behavioral health providers	0%	2	29	6.9%
6	558	Durham	VAMC	Yes	90%	20 minutes or less	Often	30 minutes or less	30 minutes or less	30%	55	267	20.6%
6	558GA	Greenville	VLCBOC	Yes	100%	20 minutes or less	Always	Do not have CCC prescribers	30 minutes or less	100%	31	168	18.5%
6	558GB	Raleigh	LCBOC	Yes	90%	20 minutes or less	Often	31 to 60 minutes	31 to 60 minutes	60%	72	316	22.8%
6	558GE	Hillandale Road	LCBOC	Yes	90%	20 minutes or less	Always	31 to 60 minutes	30 minutes or less	10%	67	201	33.3%
6	558GG	Raleigh III	LCBOC	Yes	90%	20 minutes or less	Often	30 minutes or less	30 minutes or less	60%	45	150	30.0%
6	565GA	Jacksonville	LCBOC	Yes	100%	20 minutes or less	Always	30 minutes or less	30 minutes or less	100%	154	249	61.8%

			Select Reports from the 2022 PACT PCMH Program Assessment*								PCMH Same-Day Access, FY22Q1 - Q2**		
							PACT PCMH providers conduct new patient assessments as brief functional assessments (<30 minutes)	Average length patient encounters with a PACT PCMH CCC prescribing psychiatric provider	Average length patient encounters with a PACT PCMH CCC behavioral health provider	Percentage of PACT PCMH staff co-located within PACT PC clinics	Number of new PCMH patients with a qualifying same-day encounter 10/4/21 - 4/3/22 (Numerator)	Number of patients with initial individual PCMH encounter 10/4/21 - 4/3/22 (Denominator)	Same-Day Access (Numerator / Denominator) %
VISN	Facility Number	Facility Name	Facility Type	Both CCC and CM	Percentage of time PACT PCMH provider available for warm hand-offs	Typical wait time for appointment with PACT PCMH provider on same day as PACT PC appointment							
6	565GC	Wilmington	VLCBOC	Yes	100%	20 minutes or less	Always	30 minutes or less	30 minutes or less	50%	184	331	55.6%
6	565GL	Cumberland County	VLCBOC	Yes	100%	20 minutes or less	Always	30 minutes or less	30 minutes or less	100%	475	813	58.4%
6	590	Hampton	VAMC	Yes	100%	20 minutes or less	Always	31 to 60 minutes	30 minutes or less	10%	386	1026	37.6%
6	590GB	Virginia Beach	VLCBOC	Yes	100%	20 minutes or less	Often	30 minutes or less	30 minutes or less	100%	72	206	35.0%
6	590GD	Chesapeake	VLCBOC	Yes	100%	20 minutes or less	Always	31 to 60 minutes	30 minutes or less	30%	84	251	33.5%
6	637	Charles George	VAMC	Yes	100%	21 to 40 minutes	Sometimes	30 minutes or less	30 minutes or less	50%	257	598	43.0%
6	637GA	Franklin	LCBOC	Yes	100%	41 to 60 minutes	Often	Do not have CCC prescribers	31 to 60 minutes	0%	7	22	31.8%
6	637GC	Hickory	LCBOC	Yes	100%	>1 hour	Often	Do not have CCC prescribers	31 to 60 minutes	0%	19	139	13.7%
6	652	Richmond	VAMC	Yes	100%	20 minutes or less	Always	30 minutes or less	30 minutes or less	100%	266	581	45.8%
6	652GI	Massaponaz	LCBOC	Yes	100%	21 to 40 minutes	Always	31 to 60 minutes	30 minutes or less	100%	55	194	28.4%
6	652GB	Fredericksburg 2	LCBOC	Yes	100%	20 minutes or less	Always	30 minutes or less	30 minutes or less	100%	192	360	53.3%
6	652GC	Henrico County	LCBOC	Yes	100%	21 to 40 minutes	Always	30 minutes or less	30 minutes or less	100%	71	242	29.3%
6	658	Salem	VAMC	No	100%	20 minutes or less	Often	31 to 60 minutes	30 minutes or less	50%	233	417	55.9%
6	659	Salisbury	VAMC	Yes	100%	20 minutes or less	Often	31 to 60 minutes	31 to 60 minutes	100%	206	419	49.2%
6	659BY	Kernersville	VLCBOC	Yes	100%	20 minutes or less	Always	Do not have CCC prescribers	30 minutes or less	100%	143	344	41.6%
6	659BZ	South Charlotte	VLCBOC	Yes	100%	20 minutes or less	Often	30 minutes or less	30 minutes or less	100%	439	782	56.1%
6	659GA	North Charlotte	VLCBOC	Yes	100%	20 minutes or less	Always	30 minutes or less	31 to 60 minutes	100%	52	134	38.8%
7	508	Atlanta	VAMC	Yes	70%	21 to 40 minutes	Always	30 minutes or less	31 to 60 minutes	40%	71	559	12.7%
7	508GA	Fort McPherson	VAMC	Yes	100%	20 minutes or less	Always	Do not know	30 minutes or less	90%	31	298	10.4%
7	508GE	Oakwood	LCBOC	Yes	90%	21 to 40 minutes	Always	30 minutes or less	30 minutes or less	40%	76	322	23.6%
7	508GF	West Cobb County	LCBOC	Yes	100%	21 to 40 minutes	Always	30 minutes or less	30 minutes or less	80%	68	318	21.4%
7	508GG	Stockbridge	LCBOC	Yes	80%	21 to 40 minutes	Always	30 minutes or less	30 minutes or less	40%	29	274	10.6%

			Select Reports from the 2022 PACT PCMH Program Assessment*								PCMH Same-Day Access, FY22Q1 - Q2**		
							PACT PCMH providers conduct new patient assessments as brief functional assessments (<30 minutes)	Average length patient encounters with a PACT PCMH CCC prescribing psychiatric provider	Average length patient encounters with a PACT PCMH CCC behavioral health provider	Percentage of PACT PCMH staff co-located within PACT PC clinics	Number of new PCMH patients with a qualifying same-day encounter 10/4/21 - 4/3/22 (Numerator)	Number of patients with initial individual PCMH encounter 10/4/21 - 4/3/22 (Denominator)	Same-Day Access (Numerator / Denominator) %
VISN	Facility Number	Facility Name	Facility Type	Both CCC and CM	Percentage of time PACT PCMH provider available for warm hand-offs	Typical wait time for appointment with PACT PCMH provider on same day as PACT PC appointment							
7	508GH	Lawrenceville	VLCBOC	Yes	100%	21 to 40 minutes	Always	30 minutes or less	30 minutes or less	50%	144	430	33.5%
7	508GI	Newnan	LCBOC	Yes	80%	21 to 40 minutes	Always	30 minutes or less	30 minutes or less	40%	3	143	2.1%
7	508GK	Trinka Davis Veterans Village	VAMC	Yes	80%	21 to 40 minutes	Always	30 minutes or less	30 minutes or less	40%	12	102	11.8%
7	508GO	Northeast Cobb County	LCBOC	Yes	80%	41 to 60 minutes	Always	30 minutes or less	30 minutes or less	80%	38	327	11.6%
7	508QE	Gwinnett County	LCBOC	Yes	100%	20 minutes or less	Always	30 minutes or less	30 minutes or less	50%	38	147	25.9%
7	508QF	Atlanta	VLCBOC	Yes	90%	21 to 40 minutes	Always	30 minutes or less	30 minutes or less	70%	52	520	10.0%
7	509	Charlie Norwood	VAMC	No	PCMH not reported	PCMH not reported	PCMH not reported	PCMH not reported	PCMH not reported	PCMH not reported	.	0	--
7	509A0	Augusta -Uptown	VAMC	No	100%	21 to 40 minutes	Always	30 minutes or less	30 minutes or less	90%	304	627	48.5%
7	509GA	Athens	LCBOC	No	100%	20 minutes or less	Always	Do not have CCC prescribers	30 minutes or less	100%	96	231	41.6%
7	521	Birmingham	VAMC	Yes	100%	21 to 40 minutes	Always	30 minutes or less	30 minutes or less	100%	24	46	52.2%
7	521GA	Huntsville	VLCBOC	No	100%	21 to 40 minutes	Often	30 minutes or less	30 minutes or less	100%	147	225	65.3%
7	521GJ	Birmingham	VLCBOC	Yes	100%	21 to 40 minutes	Always	30 minutes or less	30 minutes or less	100%	171	354	48.3%
7	534	Charleston	VAMC	Yes	100%	20 minutes or less	Often	30 minutes or less	30 minutes or less	60%	3	19	15.8%
7	534BY	Savannah	VLCBOC	Yes	90%	20 minutes or less	Often	30 minutes or less	30 minutes or less	0%	148	581	25.5%
7	534GB	Myrtle Beach	VLCBOC	Yes	90%	20 minutes or less	Often	31 to 60 minutes	30 minutes or less	70%	180	510	35.3%
7	534GC	Beaufort	LCBOC	Yes	50%	21 to 40 minutes	Often	Do not have CCC prescribers	30 minutes or less	100%	17	164	10.4%
7	534GD	Goose Creek	VLCBOC	Yes	70%	21 to 40 minutes	Always	Do not have CCC prescribers	30 minutes or less	100%	36	182	19.8%
7	534GE	Hinesville	LCBOC	Yes	80%	20 minutes or less	Half the time	30 minutes or less	30 minutes or less	100%	177	436	40.6%
7	534GF	Trident 1	VLCBOC	Yes	100%	20 minutes or less	Always	30 minutes or less	30 minutes or less	100%	267	897	29.8%
7	544	Columbia	VAMC	Yes	100%	41 to 60 minutes	Always	31 to 60 minutes	30 minutes or less	50%	255	1268	20.1%
7	544BZ	Greenville	VLCBOC	Yes	100%	41 to 60 minutes	Always	31 to 60 minutes	30 minutes or less	50%	36	212	17.0%
7	544GB	Florence	LCBOC	Yes	100%	21 to 40 minutes	Always	31 to 60 minutes	30 minutes or less	30%	31	101	30.7%

			Select Reports from the 2022 PACT PCMHI Program Assessment*								PCMHI Same-Day Access, FY22Q1 - Q2**		
							PACT PCMHI providers conduct new patient assessments as brief functional assessments (<30 minutes)	Average length patient encounters with a PACT PCMHI CCC prescribing psychiatric provider	Average length patient encounters with a PACT PCMHI CCC behavioral health provider	Percentage of PACT PCMHI staff co-located within PACT PC clinics	Number of new PCMHI patients with a qualifying same-day encounter 10/4/21 - 4/3/22 (Numerator)	Number of patients with initial individual PCMHI encounter 10/4/21 - 4/3/22 (Denominator)	Same-Day Access (Numerator / Denominator) %
VISN	Facility Number	Facility Name	Facility Type	Both CCC and CM	Percentage of time PACT PCMHI provider available for warm hand-offs	Typical wait time for appointment with PACT PCMHI provider on same day as PACT PC appointment							
7	544GC	Rock Hill	LCBOC	No	PCMHI not reported	PCMHI not reported	PCMHI not reported	PCMHI not reported	PCMHI not reported	PCMHI not reported	0	3	0.0%
7	544GD	Anderson	LCBOC	No	50%	Do not know	Often	31 to 60 minutes	Do not have CCC behavioral health providers	0%	8	85	9.4%
7	544GF	Sumter	LCBOC	No	Do not know	Do not know	Always	31 to 60 minutes	Do not have CCC behavioral health providers	0%	1	62	1.6%
7	544GG	Spartanburg	LCBOC	No	50%	Do not know	Often	31 to 60 minutes	Do not have CCC behavioral health providers	0%	1	52	1.9%
7	557	Dublin	VAMC	No	100%	21 to 40 minutes	Always	30 minutes or less	30 minutes or less	0%	129	239	54.0%
7	557GA	Macon	VLCBOC	No	100%	20 minutes or less	Always	30 minutes or less	30 minutes or less	100%	143	211	67.8%
7	557GB	Albany	LCBOC	No	100%	20 minutes or less	Always	30 minutes or less	30 minutes or less	0%	54	105	51.4%
7	557HA	Perry	LCBOC	No	100%	20 minutes or less	Always	30 minutes or less	30 minutes or less	30%	10	61	16.4%
7	619A4	Central Alabama -Tuskegee	VAMC	No	100%	20 minutes or less	Always	Do not have CCC prescribers	30 minutes or less	50%	20	82	24.4%
7	619GA	Columbus	LCBOC	No	70%	Do not know	Always	Do not have CCC prescribers	30 minutes or less	0%	0	12	0.0%
7	619GD	Wiregrass	LCBOC	No	30%	Do not know	Always	Do not have CCC prescribers	30 minutes or less	0%	29	143	20.3%
7	619GF	Central Alabama Montgomery	VLCBOC	No	100%	21 to 40 minutes	Always	Do not have CCC prescribers	30 minutes or less	20%	109	386	28.2%
7	619QB	Fort Benning	VLCBOC	No	70%	20 minutes or less	Always	Do not have CCC prescribers	30 minutes or less	40%	109	285	38.2%
7	679	Tuscaloosa	VAMC	Yes	100%	20 minutes or less	Often	30 minutes or less	30 minutes or less	100%	85	223	38.1%
8	516	Bay Pines	VAMC	Yes	100%	21 to 40 minutes	Always	31 to 60 minutes	30 minutes or less	50%	263	718	36.6%
8	516BZ	Lee County	VLCBOC	Yes	100%	20 minutes or less	Always	30 minutes or less	30 minutes or less	0%	298	619	48.1%
8	516GA	Sarasota	VLCBOC	Yes	100%	21 to 40 minutes	Always	30 minutes or less	30 minutes or less	0%	80	252	31.7%
8	516GC	Palm Harbor	LCBOC	Yes	100%	21 to 40 minutes	Often	30 minutes or less	30 minutes or less	0%	50	182	27.5%
8	516GD	Bradenton	VLCBOC	Yes	100%	21 to 40 minutes	Always	30 minutes or less	30 minutes or less	0%	75	238	31.5%
8	516GE	Port Charlotte	LCBOC	Yes	100%	21 to 40 minutes	Always	30 minutes or less	30 minutes or less	50%	53	196	27.0%
8	516GF	Naples	LCBOC	Yes	100%	20 minutes or less	Always	30 minutes or less	30 minutes or less	100%	121	258	46.9%

			Select Reports from the 2022 PACT PCMH Program Assessment*								PCMH Same-Day Access, FY22Q1 - Q2**		
VISN	Facility Number	Facility Name	Facility Type	Both CCC and CM	Percentage of time PACT PCMH provider available for warm hand-offs	Typical wait time for appointment with PACT PCMH provider on same day as PACT PC appointment	PACT PCMH providers conduct new patient assessments as brief functional assessments (<30 minutes)	Average length patient encounters with a PACT PCMH CCC prescribing psychiatric provider	Average length patient encounters with a PACT PCMH CCC behavioral health provider	Percentage of PACT PCMH staff co-located within PACT PC clinics	Number of new PCMH patients with a qualifying same-day encounter 10/4/21 - 4/3/22 (Numerator)	Number of patients with initial individual PCMH encounter 10/4/21 - 4/3/22 (Denominator)	Same-Day Access (Numerator / Denominator) %
8	516GH	Sebring	LCBOC	Yes	50%	21 to 40 minutes	Always	30 minutes or less	30 minutes or less	0%	11	70	15.7%
8	546	Miami	VAMC	Yes	30%	21 to 40 minutes	Often	30 minutes or less	30 minutes or less	40%	148	512	28.9%
8	546BZ	Sunrise	VLCBOC	Yes	30%	21 to 40 minutes	Often	31 to 60 minutes	30 minutes or less	30%	114	438	26.0%
8	546GC	Homestead	LCBOC	Yes	30%	20 minutes or less	Often	Do not have CCC prescribers	30 minutes or less	40%	13	40	32.5%
8	548	West Palm Beach	VAMC	Yes	100%	20 minutes or less	Often	31 to 60 minutes	31 to 60 minutes	100%	220	755	29.1%
8	548GA	Fort Pierce	LCBOC	Yes	100%	20 minutes or less	Often	31 to 60 minutes	31 to 60 minutes	80%	5	96	5.2%
8	548GB	Delray Beach	LCBOC	Yes	100%	20 minutes or less	Often	31 to 60 minutes	31 to 60 minutes	100%	2	57	3.5%
8	548GC	Stuart	LCBOC	Yes	100%	20 minutes or less	Often	31 to 60 minutes	31 to 60 minutes	100%	12	99	12.1%
8	573	Gainesville	VAMC	Yes	100%	21 to 40 minutes	Often	30 minutes or less	30 minutes or less	80%	160	582	27.5%
8	573A4	Lake City	VAMC	No	PCMH not reported	PCMH not reported	PCMH not reported	PCMH not reported	PCMH not reported	PCMH not reported	3	91	3.3%
8	573BY	Jacksonville 1	VLCBOC	Yes	100%	20 minutes or less	Always	31 to 60 minutes	30 minutes or less	100%	201	577	34.8%
8	573GA	Valdosta	LCBOC	Yes	40%	20 minutes or less	Often	Do not have CCC prescribers	30 minutes or less	0%	16	120	13.3%
8	573GD	Ocala	VLCBOC	Yes	100%	20 minutes or less	Often	30 minutes or less	30 minutes or less	0%	45	316	14.2%
8	573GE	Leo C. Chase Jr.	LCBOC	No	PCMH not reported	PCMH not reported	PCMH not reported	PCMH not reported	PCMH not reported	PCMH not reported	34	178	19.1%
8	573GF	Sergeant Ernest I. "Boots" Thomas	VLCBOC	Yes	100%	20 minutes or less	Often	31 to 60 minutes	31 to 60 minutes	0%	22	266	8.3%
8	573GI	The Villages	VLCBOC	Yes	100%	20 minutes or less	Always	Do not have CCC prescribers	30 minutes or less	30%	94	401	23.4%
8	573QG	Jacksonville Southpoint	VLCBOC	Yes	100%	20 minutes or less	Often	31 to 60 minutes	30 minutes or less	100%	282	416	67.8%
8	573QJ	Jacksonville 2	VLCBOC	Yes	100%	20 minutes or less	Often	31 to 60 minutes	30 minutes or less	100%	148	361	41.0%
8	573QK	Lake City	LCBOC	No	PCMH not reported	PCMH not reported	PCMH not reported	PCMH not reported	PCMH not reported	PCMH not reported	2	95	2.1%
8	672	San Juan	VAMC	Yes	100%	41 to 60 minutes	Half the time	30 minutes or less	30 minutes or less	60%	162	658	24.6%
8	672B0	Eurípides Rubio	VLCBOC	Yes	100%	21 to 40 minutes	Always	Do not have CCC prescribers	31 to 60 minutes	80%	321	452	71.0%
8	672BZ	Mayaguez	VLCBOC	Yes	100%	20 minutes or less	Half the time	31 to 60 minutes	30 minutes or less	60%	127	245	51.8%

			Select Reports from the 2022 PACT PCMH Program Assessment*								PCMH Same-Day Access, FY22Q1 - Q2**		
							PACT PCMH providers conduct new patient assessments as brief functional assessments (<30 minutes)	Average length patient encounters with a PACT PCMH CCC prescribing psychiatric provider	Average length patient encounters with a PACT PCMH CCC behavioral health provider	Percentage of PACT PCMH staff co-located within PACT PC clinics	Number of new PCMH patients with a qualifying same-day encounter 10/4/21 - 4/3/22 (Numerator)	Number of patients with initial individual PCMH encounter 10/4/21 - 4/3/22 (Denominator)	Same-Day Access (Numerator / Denominator) %
VISN	Facility Number	Facility Name	Facility Type	Both CCC and CM	Percentage of time PACT PCMH provider available for warm hand-offs	Typical wait time for appointment with PACT PCMH provider on same day as PACT PC appointment							
8	673	Tampa	VAMC	Yes	100%	20 minutes or less	Always	30 minutes or less	30 minutes or less	100%	533	597	89.3%
8	673BZ	New Port Richey	VLCBOC	Yes	100%	20 minutes or less	Always	30 minutes or less	30 minutes or less	0%	207	363	57.0%
8	673GB	Lakeland	VLCBOC	Yes	100%	20 minutes or less	Always	30 minutes or less	30 minutes or less	100%	127	215	59.1%
8	673GC	Brooksville	LCBOC	Yes	100%	20 minutes or less	Always	30 minutes or less	30 minutes or less	0%	106	216	49.1%
8	673GG	South Hillsborough	VLCBOC	Yes	100%	20 minutes or less	Always	30 minutes or less	30 minutes or less	100%	60	223	26.9%
8	673GH	Lecanto	LCBOC	Yes	100%	20 minutes or less	Always	30 minutes or less	30 minutes or less	100%	62	168	36.9%
8	673QJ	Hidden River	VLCBOC	Yes	100%	20 minutes or less	Always	30 minutes or less	30 minutes or less	100%	1015	1413	71.8%
8	675	Orlando	VAMC	Yes	100%	21 to 40 minutes	Always	30 minutes or less	30 minutes or less	30%	109	800	13.6%
8	675GA	Viera	VLCBOC	Yes	100%	21 to 40 minutes	Often	Do not have CCC prescribers	30 minutes or less	20%	250	611	40.9%
8	675GB	Daytona Beach	VLCBOC	Yes	100%	21 to 40 minutes	Always	Do not have CCC prescribers	30 minutes or less	50%	87	531	16.4%
8	675GC	Kissimmee	LCBOC	Yes	100%	21 to 40 minutes	Often	Do not have CCC prescribers	30 minutes or less	0%	100	367	27.2%
8	675GD	Deltona	LCBOC	Yes	100%	20 minutes or less	Always	Do not have CCC prescribers	30 minutes or less	80%	124	237	52.3%
8	675GE	Tavares	LCBOC	Yes	100%	21 to 40 minutes	Often	Do not have CCC prescribers	30 minutes or less	0%	48	122	39.3%
8	675GF	Clermont	LCBOC	Yes	90%	21 to 40 minutes	Often	Do not have CCC prescribers	30 minutes or less	0%	66	221	29.9%
8	675GG	Lake Baldwin	VLCBOC	Yes	100%	21 to 40 minutes	Often	Do not have CCC prescribers	30 minutes or less	60%	120	745	16.1%
9	596	Lexington-Leestown	VAMC	Yes	100%	20 minutes or less	Often	31 to 60 minutes	30 minutes or less	40%	171	474	36.1%
9	596GA	Somerset	LCBOC	Yes	90%	20 minutes or less	Often	Do not have CCC prescribers	30 minutes or less	0%	77	113	68.1%
9	603	Robley Rex	VAMC	Yes	100%	20 minutes or less	Often	30 minutes or less	30 minutes or less	0%	24	38	63.2%
9	603GA	Fort Knox	LCBOC	Yes	100%	20 minutes or less	Often	30 minutes or less	30 minutes or less	100%	193	259	74.5%
9	603GB	New Albany	LCBOC	Yes	100%	20 minutes or less	Often	30 minutes or less	30 minutes or less	100%	140	211	66.4%
9	603GC	Greenwood	LCBOC	Yes	100%	20 minutes or less	Often	30 minutes or less	30 minutes or less	100%	138	200	69.0%
9	603GD	Stonybrook	LCBOC	Yes	100%	20 minutes or less	Often	30 minutes or less	30 minutes or less	100%	139	228	61.0%

			Select Reports from the 2022 PACT PCMH Program Assessment*								PCMH Same-Day Access, FY22Q1 - Q2**		
VISN	Facility Number	Facility Name	Facility Type	Both CCC and CM	Percentage of time PACT PCMH provider available for warm hand-offs	Typical wait time for appointment with PACT PCMH provider on same day as PACT PC appointment	PACT PCMH providers conduct new patient assessments as brief functional assessments (<30 minutes)	Average length patient encounters with a PACT PCMH CCC prescribing psychiatric provider	Average length patient encounters with a PACT PCMH CCC behavioral health provider	Percentage of PACT PCMH staff co-located within PACT PC clinics	Number of new PCMH patients with a qualifying same-day encounter 10/4/21 - 4/3/22 (Numerator)	Number of patients with initial individual PCMH encounter 10/4/21 - 4/3/22 (Denominator)	Same-Day Access (Numerator / Denominator) %
9	603GE	Newburg	LCBOC	Yes	100%	20 minutes or less	Often	30 minutes or less	30 minutes or less	100%	163	244	66.8%
9	614	Memphis	VAMC	Yes	90%	20 minutes or less	Often	Do not have CCC prescribers	31 to 60 minutes	100%	128	202	63.4%
9	614GE	Covington	LCBOC	Yes	100%	20 minutes or less	Always	Do not have CCC prescribers	30 minutes or less	100%	48	126	38.1%
9	614GF	Nonconnah Boulevard	VLCBOC	Yes	100%	20 minutes or less	Always	Do not have CCC prescribers	31 to 60 minutes	80%	130	267	48.7%
9	614GG	Jackson	LCBOC	Yes	100%	20 minutes or less	Always	Do not have CCC prescribers	30 minutes or less	50%	56	96	58.3%
9	621	Mountain Home	VAMC	Yes	100%	20 minutes or less	Always	30 minutes or less	30 minutes or less	50%	362	658	55.0%
9	621BY	William C. Tallent	VLCBOC	Yes	100%	21 to 40 minutes	Often	30 minutes or less	31 to 60 minutes	100%	262	657	39.9%
9	626	Nashville	VAMC	Yes	100%	20 minutes or less	Always	30 minutes or less	30 minutes or less	100%	84	135	62.2%
9	626A4	Murfreesboro	VAMC	Yes	100%	20 minutes or less	Often	30 minutes or less	30 minutes or less	100%	142	335	42.4%
9	626GE	Clarksville	VLCBOC	Yes	100%	21 to 40 minutes	Often	30 minutes or less	30 minutes or less	100%	274	520	52.7%
9	626GF	Chattanooga	VLCBOC	Yes	100%	21 to 40 minutes	Often	31 to 60 minutes	31 to 60 minutes	100%	109	229	47.6%
9	626GH	Cookeville	LCBOC	No	PCMH not reported	PCMH not reported	PCMH not reported	PCMH not reported	PCMH not reported	PCMH not reported	0	1	0.0%
9	626GO	International Plaza	VLCBOC	Yes	100%	20 minutes or less	Always	31 to 60 minutes	30 minutes or less	100%	54	182	29.7%
9	626QB	Charlotte Avenue	LCBOC	Yes	100%	21 to 40 minutes	Often	30 minutes or less	30 minutes or less	100%	98	225	43.6%
10	506	Ann Arbor	VAMC	Yes	90%	21 to 40 minutes	Often	30 minutes or less	31 to 60 minutes	100%	162	464	34.9%
10	506GA	Toledo	VLCBOC	No	50%	21 to 40 minutes	Often	Do not have CCC prescribers	31 to 60 minutes	100%	37	109	33.9%
10	515	Battle Creek	VAMC	Yes	90%	21 to 40 minutes	Often	31 to 60 minutes	30 minutes or less	70%	109	309	35.3%
10	515BY	Wyoming	VLCBOC	Yes	90%	21 to 40 minutes	Often	30 minutes or less	30 minutes or less	100%	178	456	39.0%
10	515GA	Muskegon	LCBOC	Yes	70%	21 to 40 minutes	Always	31 to 60 minutes	31 to 60 minutes	0%	10	92	10.9%
10	538	Chillicothe	VAMC	No	100%	20 minutes or less	Always	30 minutes or less	30 minutes or less	70%	83	216	38.4%
10	539	Cincinnati	VAMC	Yes	100%	20 minutes or less	Always	31 to 60 minutes	30 minutes or less	100%	152	270	56.3%
10	539GB	Clermont County	LCBOC	Yes	50%	20 minutes or less	Often	31 to 60 minutes	30 minutes or less	100%	86	165	52.1%

			Select Reports from the 2022 PACT PCMHI Program Assessment*								PCMHI Same-Day Access, FY22Q1 - Q2**		
VISN	Facility Number	Facility Name	Facility Type	Both CCC and CM	Percentage of time PACT PCMHI provider available for warm hand-offs	Typical wait time for appointment with PACT PCMHI provider on same day as PACT PC appointment	PACT PCMHI providers conduct new patient assessments as brief functional assessments (<30 minutes)	Average length patient encounters with a PACT PCMHI CCC prescribing psychiatric provider	Average length patient encounters with a PACT PCMHI CCC behavioral health provider	Percentage of PACT PCMHI staff co-located within PACT PC clinics	Number of new PCMHI patients with a qualifying same-day encounter 10/4/21 - 4/3/22 (Numerator)	Number of patients with initial individual PCMHI encounter 10/4/21 - 4/3/22 (Denominator)	Same-Day Access (Numerator / Denominator) %
10	541	Cleveland	VAMC	Yes	100%	20 minutes or less	Always	Do not have CCC prescribers	30 minutes or less	100%	114	349	32.7%
10	541BY	Canton	VLCBOC	Yes	100%	21 to 40 minutes	Always	30 minutes or less	30 minutes or less	100%	63	217	29.0%
10	541BZ	Youngstown	VLCBOC	Yes	100%	21 to 40 minutes	Often	Do not have CCC prescribers	30 minutes or less	50%	48	197	24.4%
10	541GB	Lorain	LCBOC	No	50%	21 to 40 minutes	Always	Do not have CCC prescribers	31 to 60 minutes	0%	24	196	12.2%
10	541GD	Mansfield	LCBOC	No	100%	>1 hour	Sometimes	31 to 60 minutes	30 minutes or less	100%	36	202	17.8%
10	541GF	Lake County	LCBOC	Yes	100%	20 minutes or less	Always	Do not have CCC prescribers	30 minutes or less	0%	40	237	16.9%
10	541GG	Akron	VLCBOC	Yes	100%	21 to 40 minutes	Often	31 to 60 minutes	Do not have CCC behavioral health providers	100%	107	362	29.6%
10	541GL	Parma	VLCBOC	No	100%	20 minutes or less	Often	Do not have CCC prescribers	30 minutes or less	100%	161	412	39.1%
10	552	Dayton	VAMC	Yes	100%	21 to 40 minutes	Always	30 minutes or less	30 minutes or less	100%	332	591	56.2%
10	553	Detroit	VAMC	No	100%	20 minutes or less	Always	30 minutes or less	30 minutes or less	100%	159	460	34.6%
10	583	Indianapolis	VAMC	Yes	80%	21 to 40 minutes	Always	Do not have CCC prescribers	30 minutes or less	100%	189	472	40.0%
10	583GB	Bloomington	LCBOC	Yes	50%	21 to 40 minutes	Often	Do not have CCC prescribers	30 minutes or less	100%	73	126	57.9%
10	583GD	Indianapolis West	LCBOC	Yes	100%	20 minutes or less	Always	Do not know	30 minutes or less	100%	631	786	80.3%
10	610	Marion	VAMC	Yes	50%	20 minutes or less	Often	Do not have CCC prescribers	31 to 60 minutes	100%	30	83	36.1%
10	610A4	Fort Wayne	VAMC	Yes	50%	20 minutes or less	Often	31 to 60 minutes	31 to 60 minutes	100%	65	195	33.3%
10	610BY	St. Joseph County	VLCBOC	Yes	80%	20 minutes or less	Often	Do not have CCC prescribers	31 to 60 minutes	100%	41	96	42.7%
10	655	Saginaw	VAMC	Yes	100%	21 to 40 minutes	Often	Do not have CCC prescribers	31 to 60 minutes	50%	96	256	37.5%
10	655GB	Traverse City	LCBOC	Yes	100%	20 minutes or less	Always	Do not have CCC prescribers	30 minutes or less	100%	31	86	36.0%
10	757	Columbus	VLCBOC	No	90%	20 minutes or less	Often	Do not have CCC prescribers	30 minutes or less	100%	160	285	56.1%
12	537	Chicago	VAMC	Yes	100%	20 minutes or less	Always	30 minutes or less	30 minutes or less	40%	132	342	38.6%
12	537BY	Crown Point	VLCBOC	Yes	100%	20 minutes or less	Always	30 minutes or less	30 minutes or less	70%	126	255	49.4%
12	550	Danville	VAMC	Yes	100%	20 minutes or less	Always	Do not have CCC prescribers	31 to 60 minutes	70%	30	102	29.4%

			Select Reports from the 2022 PACT PCMH Program Assessment*								PCMH Same-Day Access, FY22Q1 - Q2**		
							PACT PCMH providers conduct new patient assessments as brief functional assessments (<30 minutes)	Average length patient encounters with a PACT PCMH CCC prescribing psychiatric provider	Average length patient encounters with a PACT PCMH CCC behavioral health provider	Percentage of PACT PCMH staff co-located within PACT PC clinics	Number of new PCMH patients with a qualifying same-day encounter 10/4/21 - 4/3/22 (Numerator)	Number of patients with initial individual PCMH encounter 10/4/21 - 4/3/22 (Denominator)	Same-Day Access (Numerator / Denominator) %
VISN	Facility Number	Facility Name	Facility Type	Both CCC and CM	Percentage of time PACT PCMH provider available for warm hand-offs	Typical wait time for appointment with PACT PCMH provider on same day as PACT PC appointment							
12	550BY	Peoria	VLCBOC	Yes	50%	21 to 40 minutes	Often	30 minutes or less	31 to 60 minutes	100%	18	94	19.1%
12	556	North Chicago	VAMC	Yes	100%	20 minutes or less	Always	31 to 60 minutes	30 minutes or less	90%	136	245	55.5%
12	578	Hines	VAMC	Yes	90%	20 minutes or less	Often	Do not have CCC prescribers	31 to 60 minutes	50%	362	779	46.5%
12	578GA	Joliet	LCBOC	Yes	90%	20 minutes or less	Often	Do not have CCC prescribers	31 to 60 minutes	80%	26	117	22.2%
12	578GD	Aurora	LCBOC	Yes	90%	20 minutes or less	Often	Do not have CCC prescribers	31 to 60 minutes	80%	28	77	36.4%
12	578GG	Oak Lawn	LCBOC	Yes	90%	20 minutes or less	Often	Do not have CCC prescribers	30 minutes or less	90%	80	163	49.1%
12	585	Iron Mountain	VAMC	Yes	100%	20 minutes or less	Often	30 minutes or less	30 minutes or less	100%	21	23	91.3%
12	607	Madison	VAMC	No	PCMH not reported	PCMH not reported	PCMH not reported	PCMH not reported	PCMH not reported	PCMH not reported	10	58	17.2%
12	607GG	Madison West	VLCBOC	Yes	90%	20 minutes or less	Always	30 minutes or less	31 to 60 minutes	30%	116	275	42.2%
12	607HA	Rockford	LCBOC	Yes	90%	20 minutes or less	Often	30 minutes or less	31 to 60 minutes	70%	58	171	33.9%
12	676	Tomah	VAMC	Yes	90%	>1 hour	Often	30 minutes or less	30 minutes or less	0%	128	147	87.1%
12	676GC	La Crosse	LCBOC	Yes	100%	20 minutes or less	Often	30 minutes or less	31 to 60 minutes	50%	100	165	60.6%
12	676GD	Wisconsin Rapids	LCBOC	Yes	100%	20 minutes or less	Often	30 minutes or less	30 minutes or less	30%	25	61	41.0%
12	695	Milwaukee	VAMC	Yes	100%	20 minutes or less	Always	Do not have CCC prescribers	30 minutes or less	50%	152	630	24.1%
12	695BY	Appleton	VLCBOC	Yes	100%	20 minutes or less	Always	Do not have CCC prescribers	30 minutes or less	100%	104	228	45.6%
12	695GD	Green Bay	VLCBOC	Yes	100%	20 minutes or less	Often	30 minutes or less	30 minutes or less	100%	61	186	32.8%
15	589	Kansas City	VAMC	Yes	50%	20 minutes or less	Often	30 minutes or less	30 minutes or less	60%	41	144	28.5%
15	589A4	Columbia	VAMC	Yes	100%	20 minutes or less	Always	Do not have CCC prescribers	30 minutes or less	70%	200	392	51.0%
15	589A5	Topeka	VAMC	Yes	50%	20 minutes or less	Always	31 to 60 minutes	30 minutes or less	100%	47	151	31.1%
15	589A6	Leavenworth	VAMC	Yes	100%	20 minutes or less	Always	31 to 60 minutes	30 minutes or less	100%	54	219	24.7%
15	589A7	Wichita	VAMC	Yes	100%	20 minutes or less	Always	31 to 60 minutes	30 minutes or less	20%	122	325	37.5%

			Select Reports from the 2022 PACT PCMH Program Assessment*								PCMH Same-Day Access, FY22Q1 - Q2**		
							PACT PCMH providers conduct new patient assessments as brief functional assessments (<30 minutes)	Average length patient encounters with a PACT PCMH CCC prescribing psychiatric provider	Average length patient encounters with a PACT PCMH CCC behavioral health provider	Percentage of PACT PCMH staff co-located within PACT PC clinics	Number of new PCMH patients with a qualifying same-day encounter 10/4/21 - 4/3/22 (Numerator)	Number of patients with initial individual PCMH encounter 10/4/21 - 4/3/22 (Denominator)	Same-Day Access (Numerator / Denominator) %
VISN	Facility Number	Facility Name	Facility Type	Both CCC and CM	Percentage of time PACT PCMH provider available for warm hand-offs	Typical wait time for appointment with PACT PCMH provider on same day as PACT PC appointment							
15	589G8	Jefferson City	LCBOC	No	PCMH not reported	PCMH not reported	PCMH not reported	PCMH not reported	PCMH not reported	PCMH not reported	0	2	0.0%
15	589GF	Waynesville	LCBOC	No	50%	Same day appointments not available	Sometimes	Do not have CCC prescribers	31 to 60 minutes	50%	14	99	14.1%
15	589JF	Honor	VLCBOC	Yes	90%	20 minutes or less	Often	30 minutes or less	30 minutes or less	60%	151	318	47.5%
15	657	John J. Cochran Veterans Hospital	VAMC	No	100%	20 minutes or less	Always	30 minutes or less	30 minutes or less	100%	31	98	31.6%
15	657A0	St. Louis -Jefferson Barracks	VAMC	No	100%	20 minutes or less	Often	30 minutes or less	30 minutes or less	80%	134	390	34.4%
15	657A4	Poplar Bluff	VAMC	Yes	100%	20 minutes or less	Sometimes	Do not have CCC prescribers	31 to 60 minutes	80%	53	126	42.1%
15	657A5	Marion	VAMC	Yes	100%	21 to 40 minutes	Always	31 to 60 minutes	30 minutes or less	0%	6	23	26.1%
15	657GA	St. Clair County	LCBOC	No	100%	20 minutes or less	Always	30 minutes or less	30 minutes or less	100%	41	135	30.4%
15	657GB	St. Louis County	LCBOC	No	100%	20 minutes or less	Always	30 minutes or less	30 minutes or less	100%	94	165	57.0%
15	657GD	St. Charles County	LCBOC	No	100%	20 minutes or less	Often	30 minutes or less	30 minutes or less	100%	74	150	49.3%
15	657GJ	Evansville	VLCBOC	Yes	100%	20 minutes or less	Always	30 minutes or less	30 minutes or less	80%	107	213	50.2%
15	657GX	Washington Avenue	LCBOC	No	100%	20 minutes or less	Often	30 minutes or less	30 minutes or less	100%	73	164	44.5%
15	657QA	Olive Street	LCBOC	No	100%	20 minutes or less	Often	30 minutes or less	30 minutes or less	100%	35	93	37.6%
15	657QD	Heartland Street	LCBOC	Yes	100%	20 minutes or less	Always	30 minutes or less	30 minutes or less	60%	20	82	24.4%
16	502	Alexandria	VAMC	Yes	100%	20 minutes or less	Often	30 minutes or less	30 minutes or less	100%	46	234	19.7%
16	502GB	Lafayette	LCBOC	Yes	90%	21 to 40 minutes	Often	30 minutes or less	30 minutes or less	100%	61	171	35.7%
16	520	Biloxi	VAMC	Yes	100%	>1 hour	Often	30 minutes or less	30 minutes or less	100%	42	106	39.6%
16	520BZ	Pensacola	VLCBOC	Yes	50%	21 to 40 minutes	Sometimes	31 to 60 minutes	31 to 60 minutes	100%	27	108	25.0%
16	520GA	Mobile	VLCBOC	Yes	30%	>1 hour	Often	30 minutes or less	31 to 60 minutes	100%	42	135	31.1%
16	520GB	Panama City Beach	LCBOC	Yes	100%	20 minutes or less	Always	30 minutes or less	30 minutes or less	100%	121	257	47.1%
16	520GC	Eglin Air Force Base	VLCBOC	Yes	100%	20 minutes or less	Often	30 minutes or less	30 minutes or less	70%	94	422	22.3%
16	564	Fayetteville	VAMC	Yes	100%	20 minutes or less	Always	30 minutes or less	30 minutes or less	50%	49	217	22.6%

			Select Reports from the 2022 PACT PCMH Program Assessment*								PCMH Same-Day Access, FY22Q1 - Q2**		
							PACT PCMH providers conduct new patient assessments as brief functional assessments (<30 minutes)	Average length patient encounters with a PACT PCMH CCC prescribing psychiatric provider	Average length patient encounters with a PACT PCMH CCC behavioral health provider	Percentage of PACT PCMH staff co-located within PACT PC clinics	Number of new PCMH patients with a qualifying same-day encounter 10/4/21 - 4/3/22 (Numerator)	Number of patients with initial individual PCMH encounter 10/4/21 - 4/3/22 (Denominator)	Same-Day Access (Numerator / Denominator) %
VISN	Facility Number	Facility Name	Facility Type	Both CCC and CM	Percentage of time PACT PCMH provider available for warm hand-offs	Typical wait time for appointment with PACT PCMH provider on same day as PACT PC appointment							
16	564BY	Springfield	VLCBOC	Yes	100%	20 minutes or less	Always	30 minutes or less	30 minutes or less	100%	210	310	67.7%
16	564GB	Fort Smith	LCBOC	Yes	100%	41 to 60 minutes	Often	Do not have CCC prescribers	30 minutes or less	0%	18	116	15.5%
16	564GC	Branson	LCBOC	Yes	100%	21 to 40 minutes	Always	30 minutes or less	30 minutes or less	0%	55	105	52.4%
16	564GF	Joplin	LCBOC	Yes	100%	41 to 60 minutes	Always	30 minutes or less	30 minutes or less	0%	21	69	30.4%
16	580	Michael E. DeBakey	VAMC	Yes	100%	20 minutes or less	Always	31 to 60 minutes	31 to 60 minutes	100%	262	1096	23.9%
16	580BY	Beaumont	LCBOC	No	100%	20 minutes or less	Always	31 to 60 minutes	Do not have CCC behavioral health providers	0%	79	149	53.0%
16	580BZ	Charles Wilson	LCBOC	No	100%	20 minutes or less	Always	Do not have CCC prescribers	31 to 60 minutes	100%	15	71	21.1%
16	580GD	Conroe	VLCBOC	Yes	100%	20 minutes or less	Always	31 to 60 minutes	31 to 60 minutes	100%	29	259	11.2%
16	580GE	Katy	VLCBOC	No	100%	20 minutes or less	Always	31 to 60 minutes	31 to 60 minutes	100%	92	246	37.4%
16	580GG	Richmond	LCBOC	No	PCMH not reported	PCMH not reported	PCMH not reported	PCMH not reported	PCMH not reported	PCMH not reported	6	37	16.2%
16	580GH	Tomball	VLCBOC	Yes	100%	20 minutes or less	Always	31 to 60 minutes	31 to 60 minutes	100%	55	246	22.4%
16	580GJ	Texas City	LCBOC	Yes	100%	20 minutes or less	Always	31 to 60 minutes	31 to 60 minutes	100%	67	206	32.5%
16	586	Jackson	VAMC	Yes	100%	20 minutes or less	Always	30 minutes or less	30 minutes or less	80%	169	383	44.1%
16	586GD	Hattiesburg	LCBOC	Yes	100%	20 minutes or less	Always	Do not have CCC prescribers	30 minutes or less	100%	42	113	37.2%
16	598	Little Rock	VAMC	Yes	100%	20 minutes or less	Always	31 to 60 minutes	30 minutes or less	0%	19	62	30.6%
16	598A0	North Little Rock	VAMC	Yes	100%	20 minutes or less	Always	Do not know	30 minutes or less	50%	272	559	48.7%
16	598GC	Hot Springs	LCBOC	Yes	100%	20 minutes or less	Always	30 minutes or less	30 minutes or less	0%	51	120	42.5%
16	598GG	Conway	LCBOC	Yes	100%	20 minutes or less	Always	30 minutes or less	30 minutes or less	10%	17	62	27.4%
16	629	New Orleans	VAMC	Yes	100%	21 to 40 minutes	Always	30 minutes or less	30 minutes or less	90%	189	633	29.9%
16	629BY	Baton Rouge	VLCBOC	Yes	100%	21 to 40 minutes	Often	31 to 60 minutes	30 minutes or less	90%	43	284	15.1%
16	667	Shreveport	VAMC	Yes	100%	20 minutes or less	Always	30 minutes or less	30 minutes or less	50%	173	354	48.9%
16	667GB	Monroe	LCBOC	Yes	100%	20 minutes or less	Always	30 minutes or less	30 minutes or less	0%	1	55	1.8%

			Select Reports from the 2022 PACT PCMH Program Assessment*								PCMH Same-Day Access, FY22Q1 - Q2**		
VISN	Facility Number	Facility Name	Facility Type	Both CCC and CM	Percentage of time PACT PCMH provider available for warm hand-offs	Typical wait time for appointment with PACT PCMH provider on same day as PACT PC appointment	PACT PCMH providers conduct new patient assessments as brief functional assessments (<30 minutes)	Average length patient encounters with a PACT PCMH CCC prescribing psychiatric provider	Average length patient encounters with a PACT PCMH CCC behavioral health provider	Percentage of PACT PCMH staff co-located within PACT PC clinics	Number of new PCMH patients with a qualifying same-day encounter 10/4/21 - 4/3/22 (Numerator)	Number of patients with initial individual PCMH encounter 10/4/21 - 4/3/22 (Denominator)	Same-Day Access (Numerator / Denominator) %
16	667GC	Longview	LCBOC	Yes	100%	20 minutes or less	Always	30 minutes or less	30 minutes or less	30%	135	173	78.0%
17	504	Amarillo	VAMC	Yes	100%	20 minutes or less	Often	30 minutes or less	30 minutes or less	100%	259	366	70.8%
17	504BY	Lubbock	LCBOC	Yes	100%	20 minutes or less	Always	31 to 60 minutes	30 minutes or less	100%	286	402	71.1%
17	519	Big Spring	VAMC	Yes	90%	20 minutes or less	Always	30 minutes or less	30 minutes or less	0%	5	8	62.5%
17	519HC	Abilene	LCBOC	Yes	90%	20 minutes or less	Always	30 minutes or less	30 minutes or less	0%	6	8	75.0%
17	549	Dallas	VAMC	Yes	90%	21 to 40 minutes	Often	31 to 60 minutes	30 minutes or less	20%	153	736	20.8%
17	549A4	Bonham	VAMC	Yes	100%	21 to 40 minutes	Often	30 minutes or less	30 minutes or less	90%	70	179	39.1%
17	549A5	Garland	VAMC	Yes	100%	21 to 40 minutes	Always	31 to 60 minutes	30 minutes or less	100%	147	310	47.4%
17	549BY	Fort Worth	VLCBOC	Yes	100%	21 to 40 minutes	Often	30 minutes or less	30 minutes or less	80%	294	1346	21.8%
17	549GD	Denton	LCBOC	Yes	100%	21 to 40 minutes	Often	30 minutes or less	30 minutes or less	0%	40	297	13.5%
17	549GK	Polk Street	LCBOC	Yes	100%	>1 hour	Often	31 to 60 minutes	30 minutes or less	0%	27	151	17.9%
17	549GL	Plano	LCBOC	Yes	100%	21 to 40 minutes	Often	30 minutes or less	30 minutes or less	100%	123	206	59.7%
17	549QC	Tyler Broadway	LCBOC	Yes	100%	21 to 40 minutes	Often	31 to 60 minutes	30 minutes or less	0%	39	199	19.6%
17	671	San Antonio	VAMC	Yes	100%	20 minutes or less	Always	30 minutes or less	30 minutes or less	40%	169	429	39.4%
17	671A4	Kerrville	VAMC	Yes	100%	21 to 40 minutes	Often	30 minutes or less	30 minutes or less	40%	72	175	41.1%
17	671BY	Frank M. Tejeda	VLCBOC	Yes	100%	21 to 40 minutes	Always	30 minutes or less	30 minutes or less	50%	157	466	33.7%
17	671GF	South Bexar County	LCBOC	Yes	100%	21 to 40 minutes	Always	30 minutes or less	30 minutes or less	50%	18	147	12.2%
17	671GK	San Antonio	VLCBOC	Yes	100%	21 to 40 minutes	Often	30 minutes or less	30 minutes or less	0%	207	688	30.1%
17	671GL	New Braunfels	LCBOC	Yes	100%	21 to 40 minutes	Often	30 minutes or less	30 minutes or less	0%	95	293	32.4%
17	671GO	North Central Federal	VLCBOC	Yes	100%	20 minutes or less	Always	30 minutes or less	30 minutes or less	40%	204	489	41.7%
17	671GP	Balcones Heights	VLCBOC	Yes	100%	20 minutes or less	Always	31 to 60 minutes	30 minutes or less	40%	137	447	30.6%
17	671GQ	Shavano Park	LCBOC	Yes	100%	21 to 40 minutes	Always	30 minutes or less	30 minutes or less	30%	69	261	26.4%

			Select Reports from the 2022 PACT PCMHI Program Assessment*								PCMHI Same-Day Access, FY22Q1 - Q2**		
	Facility Number	Facility Name	Facility Type	Both CCC and CM	Percentage of time PACT PCMHI provider available for warm hand-offs	Typical wait time for appointment with PACT PCMHI provider on same day as PACT PC appointment	PACT PCMHI providers conduct new patient assessments as brief functional assessments (<30 minutes)	Average length patient encounters with a PACT PCMHI CCC prescribing psychiatric provider	Average length patient encounters with a PACT PCMHI CCC behavioral health provider	Percentage of PACT PCMHI staff co-located within PACT PC clinics	Number of new PCMHI patients with a qualifying same-day encounter 10/4/21 - 4/3/22 (Numerator)	Number of patients with initial individual PCMHI encounter 10/4/21 - 4/3/22 (Denominator)	Same-Day Access (Numerator / Denominator) %
VISN	Facility Number	Facility Name	Facility Type	Both CCC and CM	Percentage of time PACT PCMHI provider available for warm hand-offs	Typical wait time for appointment with PACT PCMHI provider on same day as PACT PC appointment	PACT PCMHI providers conduct new patient assessments as brief functional assessments (<30 minutes)	Average length patient encounters with a PACT PCMHI CCC prescribing psychiatric provider	Average length patient encounters with a PACT PCMHI CCC behavioral health provider	Percentage of PACT PCMHI staff co-located within PACT PC clinics	Number of new PCMHI patients with a qualifying same-day encounter 10/4/21 - 4/3/22 (Numerator)	Number of patients with initial individual PCMHI encounter 10/4/21 - 4/3/22 (Denominator)	Same-Day Access (Numerator / Denominator) %
17	674	Temple	VAMC	Yes	100%	21 to 40 minutes	Always	30 minutes or less	30 minutes or less	60%	452	1003	45.1%
17	674A4	Waco	VAMC	No	70%	21 to 40 minutes	Always	30 minutes or less	31 to 60 minutes	0%	78	271	28.8%
17	674BY	Austin	VLCBOC	Yes	90%	20 minutes or less	Always	30 minutes or less	30 minutes or less	100%	209	691	30.2%
17	674GD	Cedar Park	VLCBOC	Yes	100%	20 minutes or less	Always	30 minutes or less	30 minutes or less	100%	83	369	22.5%
17	674GF	Temple	LCBOC	No	50%	20 minutes or less	Always	30 minutes or less	30 minutes or less	70%	147	290	50.7%
17	740GA	Harlingen	VLCBOC	No	100%	20 minutes or less	Always	30 minutes or less	30 minutes or less	100%	189	378	50.0%
17	740GB	McAllen	VLCBOC	Yes	100%	20 minutes or less	Always	30 minutes or less	30 minutes or less	100%	353	507	69.6%
17	740GC	Corpus Christi	VLCBOC	Yes	100%	20 minutes or less	Always	30 minutes or less	30 minutes or less	80%	248	591	42.0%
17	756	El Paso	VLCBOC	Yes	50%	21 to 40 minutes	Always	Do not have CCC prescribers	30 minutes or less	80%	67	392	17.1%
17	756GB	El Paso Eastside	LCBOC	Yes	50%	20 minutes or less	Always	Do not have CCC prescribers	30 minutes or less	80%	33	163	20.2%
19	436	Fort Harrison	VAMC	Yes	100%	20 minutes or less	Always	30 minutes or less	30 minutes or less	80%	87	240	36.3%
19	436A4	Miles City	VAMC	Yes	90%	20 minutes or less	Always	30 minutes or less	30 minutes or less	0%	7	9	77.8%
19	436GB	Great Falls	LCBOC	Yes	100%	21 to 40 minutes	Always	Do not have CCC prescribers	31 to 60 minutes	100%	25	127	19.7%
19	436GC	David J. Thatcher	LCBOC	Yes	100%	20 minutes or less	Always	30 minutes or less	30 minutes or less	100%	87	134	64.9%
19	436GF	Kalispell	LCBOC	Yes	100%	20 minutes or less	Always	30 minutes or less	30 minutes or less	100%	94	154	61.0%
19	436GN	Billings Spring Creek	LCBOC	Yes	90%	20 minutes or less	Often	Do not know	31 to 60 minutes	50%	139	248	56.0%
19	442	Cheyenne	VAMC	Yes	90%	20 minutes or less	Always	Do not have CCC prescribers	30 minutes or less	50%	46	254	18.1%
19	442GD	Loveland	VLCBOC	No	100%	20 minutes or less	Always	31 to 60 minutes	30 minutes or less	60%	83	407	20.4%
19	554	Rocky Mountain Regional	VAMC	Yes	90%	21 to 40 minutes	Often	30 minutes or less	30 minutes or less	60%	137	436	31.4%
19	554GB	Aurora	LCBOC	Yes	90%	21 to 40 minutes	Often	30 minutes or less	30 minutes or less	50%	89	296	30.1%
19	554GC	Golden	VLCBOC	Yes	90%	20 minutes or less	Often	30 minutes or less	30 minutes or less	70%	224	484	46.3%
19	554GD	PFC James Dunn	LCBOC	Yes	100%	21 to 40 minutes	Often	31 to 60 minutes	30 minutes or less	50%	78	210	37.1%

			Select Reports from the 2022 PACT PCMH Program Assessment*									PCMH Same-Day Access, FY22Q1 - Q2**		
							PACT PCMH providers conduct new patient assessments as brief functional assessments (<30 minutes)	Average length patient encounters with a PACT PCMH CCC prescribing psychiatric provider	Average length patient encounters with a PACT PCMH CCC behavioral health provider	Percentage of PACT PCMH staff co-located within PACT PC clinics	Number of new PCMH patients with a qualifying same-day encounter 10/4/21 - 4/3/22 (Numerator)	Number of patients with initial individual PCMH encounter 10/4/21 - 4/3/22 (Denominator)	Same-Day Access (Numerator / Denominator) %	
VISN	Facility Number	Facility Name	Facility Type	Both CCC and CM	Percentage of time PACT PCMH provider available for warm hand-offs	Typical wait time for appointment with PACT PCMH provider on same day as PACT PC appointment								
19	554GE	Colorado Springs	VLCBOC	Yes	90%	21 to 40 minutes	Often	31 to 60 minutes	30 minutes or less	50%	267	712	37.5%	
19	575	Grand Junction	VAMC	No	100%	Do not know	Always	30 minutes or less	Do not know	100%	96	186	51.6%	
19	623	Muskogee	VAMC	Yes	90%	20 minutes or less	Often	30 minutes or less	30 minutes or less	100%	11	28	39.3%	
19	623BY	Tulsa	VLCBOC	Yes	100%	20 minutes or less	Always	30 minutes or less	30 minutes or less	100%	300	468	64.1%	
19	635	Oklahoma City	VAMC	Yes	90%	20 minutes or less	Often	31 to 60 minutes	31 to 60 minutes	90%	176	346	50.9%	
19	635GA	Lawton	VLCBOC	No	PCMH not reported	PCMH not reported	PCMH not reported	PCMH not reported	PCMH not reported	PCMH not reported	1	35	2.9%	
19	635QA	North May	LCBOC	No	70%	41 to 60 minutes	Often	No CCC services	No CCC services	0%	13	94	13.8%	
19	635QB	South Oklahoma City	VLCBOC	Yes	50%	41 to 60 minutes	Always	Do not know	31 to 60 minutes	100%	19	129	14.7%	
19	660	Salt Lake City	VAMC	Yes	100%	20 minutes or less	Always	31 to 60 minutes	30 minutes or less	100%	137	392	34.9%	
19	660GB	Ogden	LCBOC	Yes	100%	21 to 40 minutes	Always	31 to 60 minutes	30 minutes or less	80%	67	218	30.7%	
19	660GJ	South Jordan	LCBOC	Yes	100%	20 minutes or less	Always	31 to 60 minutes	30 minutes or less	100%	67	210	31.9%	
19	666	Sheridan	VAMC	Yes	80%	20 minutes or less	Always	Do not know	30 minutes or less	100%	29	41	70.7%	
20	463	Anchorage	VAMC	Yes	20%	>1 hour	Sometimes	30 minutes or less	30 minutes or less	30%	2	40	5.0%	
20	531	Boise	VAMC	No	100%	21 to 40 minutes	Often	30 minutes or less	30 minutes or less	80%	104	532	19.5%	
20	531GG	Caldwell	LCBOC	No	100%	21 to 40 minutes	Often	30 minutes or less	31 to 60 minutes	70%	21	117	17.9%	
20	648	Portland	VAMC	Yes	100%	20 minutes or less	Often	30 minutes or less	30 minutes or less	50%	71	214	33.2%	
20	648A4	Portland -Vancouver	VAMC	Yes	100%	20 minutes or less	Often	30 minutes or less	30 minutes or less	30%	92	477	19.3%	
20	648GA	Bend	LCBOC	Yes	100%	20 minutes or less	Often	30 minutes or less	30 minutes or less	50%	90	216	41.7%	
20	648GB	Salem	VLCBOC	No	30%	20 minutes or less	Often	No CCC services	No CCC services	20%	13	119	10.9%	
20	648GE	Fairview	LCBOC	Yes	100%	20 minutes or less	Often	30 minutes or less	30 minutes or less	30%	48	197	24.4%	
20	648GF	Hillsboro	VLCBOC	Yes	100%	20 minutes or less	Often	30 minutes or less	30 minutes or less	50%	73	334	21.9%	
20	648GG	West Linn	LCBOC	Yes	80%	20 minutes or less	Often	30 minutes or less	30 minutes or less	90%	104	256	40.6%	

			Select Reports from the 2022 PACT PCMHI Program Assessment*									PCMHI Same-Day Access, FY22Q1 - Q2**		
							PACT PCMHI providers conduct new patient assessments as brief functional assessments (<30 minutes)	Average length patient encounters with a PACT PCMHI CCC prescribing psychiatric provider	Average length patient encounters with a PACT PCMHI CCC behavioral health provider	Percentage of PACT PCMHI staff co-located within PACT PC clinics	Number of new PCMHI patients with a qualifying same-day encounter 10/4/21 - 4/3/22 (Numerator)	Number of patients with initial individual PCMHI encounter 10/4/21 - 4/3/22 (Denominator)	Same-Day Access (Numerator / Denominator) %	
VISN	Facility Number	Facility Name	Facility Type	Both CCC and CM	Percentage of time PACT PCMHI provider available for warm hand-offs	Typical wait time for appointment with PACT PCMHI provider on same day as PACT PC appointment								
20	653	Roseburg	VAMC	No	90%	20 minutes or less	Often	30 minutes or less	30 minutes or less	100%	58	184	31.5%	
20	653BY	Eugene	VLCBOC	No	90%	20 minutes or less	Often	30 minutes or less	30 minutes or less	100%	149	330	45.2%	
20	663	Seattle	VAMC	Yes	80%	21 to 40 minutes	Often	30 minutes or less	30 minutes or less	Do not know	423	1038	40.8%	
20	663A4	American Lake	VAMC	Yes	100%	21 to 40 minutes	Always	30 minutes or less	30 minutes or less	10%	331	908	36.5%	
20	663GB	Silverdale	LCBOC	Yes	100%	20 minutes or less	Often	31 to 60 minutes	30 minutes or less	30%	79	270	29.3%	
20	663GC	Mount Vernon	VLCBOC	Yes	100%	20 minutes or less	Always	31 to 60 minutes	30 minutes or less	20%	86	225	38.2%	
20	668	Spokane	VAMC	Yes	90%	41 to 60 minutes	Always	Do not have CCC prescribers	30 minutes or less	30%	.	0	--	
20	668GB	Coeur d 'Alene	LCBOC	Yes	80%	41 to 60 minutes	Often	30 minutes or less	31 to 60 minutes	0%	.	0	--	
20	687	Walla Walla	VAMC	Yes	90%	20 minutes or less	Often	Do not have CCC prescribers	30 minutes or less	100%	4	35	11.4%	
20	687GA	Richland	LCBOC	Yes	80%	20 minutes or less	Always	30 minutes or less	31 to 60 minutes	100%	3	32	9.4%	
20	692	White City	VAMC	No	80%	20 minutes or less	Always	30 minutes or less	30 minutes or less	100%	42	166	25.3%	
21	459	Honolulu	VAMC	Yes	100%	20 minutes or less	Always	30 minutes or less	31 to 60 minutes	100%	353	717	49.2%	
21	570	Fresno	VAMC	Yes	100%	20 minutes or less	Always	30 minutes or less	30 minutes or less	0%	269	640	42.0%	
21	570GB	Tulare	LCBOC	Yes	100%	20 minutes or less	Always	30 minutes or less	30 minutes or less	0%	78	163	47.9%	
21	593	North Las Vegas	VAMC	Yes	100%	20 minutes or less	Always	30 minutes or less	30 minutes or less	100%	94	201	46.8%	
21	593GD	Northwest Las Vegas	VLCBOC	Yes	90%	20 minutes or less	Always	30 minutes or less	30 minutes or less	90%	150	349	43.0%	
21	593GE	Southeast Las Vegas	VLCBOC	Yes	90%	20 minutes or less	Always	30 minutes or less	30 minutes or less	90%	187	280	66.8%	
21	593GF	Southwest Las Vegas	VLCBOC	Yes	90%	20 minutes or less	Always	30 minutes or less	30 minutes or less	100%	222	467	47.5%	
21	593GG	Northeast Las Vegas	VLCBOC	Yes	90%	20 minutes or less	Always	Do not have CCC prescribers	30 minutes or less	90%	116	182	63.7%	
21	612A4	Sacramento	VAMC	Yes	100%	21 to 40 minutes	Half the time	31 to 60 minutes	30 minutes or less	100%	208	448	46.4%	
21	612B4	Redding	VLCBOC	Yes	90%	20 minutes or less	Always	30 minutes or less	30 minutes or less	100%	53	127	41.7%	
21	612BY	Oakland	VLCBOC	No	100%	20 minutes or less	Always	30 minutes or less	30 minutes or less	0%	0	2	0.0%	

			Select Reports from the 2022 PACT PCMHI Program Assessment*								PCMHI Same-Day Access, FY22Q1 - Q2**		
							PACT PCMHI providers conduct new patient assessments as brief functional assessments (<30 minutes)	Average length patient encounters with a PACT PCMHI CCC prescribing psychiatric provider	Average length patient encounters with a PACT PCMHI CCC behavioral health provider	Percentage of PACT PCMHI staff co-located within PACT PC clinics	Number of new PCMHI patients with a qualifying same-day encounter 10/4/21 - 4/3/22 (Numerator)	Number of patients with initial individual PCMHI encounter 10/4/21 - 4/3/22 (Denominator)	Same-Day Access (Numerator / Denominator) %
VISN	Facility Number	Facility Name	Facility Type	Both CCC and CM	Percentage of time PACT PCMHI provider available for warm hand-offs	Typical wait time for appointment with PACT PCMHI provider on same day as PACT PC appointment							
21	612GD	Fairfield	LCBOC	Yes	100%	21 to 40 minutes	Always	Do not have CCC prescribers	30 minutes or less	70%	29	118	24.6%
21	612GE	Mare Island	LCBOC	Yes	100%	21 to 40 minutes	Always	Do not have CCC prescribers	30 minutes or less	0%	7	50	14.0%
21	612GF	Martinez	VAMC	Yes	100%	20 minutes or less	Always	>60 minutes	30 minutes or less	80%	151	378	39.9%
21	612GG	Chico	LCBOC	Yes	90%	20 minutes or less	Always	Do not have CCC prescribers	30 minutes or less	100%	27	86	31.4%
21	612GH	McClellan	VLCBOC	Yes	100%	20 minutes or less	Always	30 minutes or less	30 minutes or less	70%	87	165	52.7%
21	640	Palo Alto	VAMC	No	100%	20 minutes or less	Always	Do not have CCC prescribers	30 minutes or less	100%	85	186	45.7%
21	640A4	Palo Alto -Livermore	VAMC	No	100%	20 minutes or less	Often	Do not have CCC prescribers	31 to 60 minutes	100%	27	76	35.5%
21	640BY	San Jose	VLCBOC	No	100%	20 minutes or less	Always	31 to 60 minutes	30 minutes or less	100%	25	110	22.7%
21	640HA	Stockton	LCBOC	No	100%	>1 hour	Always	Do not have CCC prescribers	30 minutes or less	0%	9	41	22.0%
21	640HB	Modesto	LCBOC	No	100%	20 minutes or less	Often	31 to 60 minutes	30 minutes or less	100%	10	96	10.4%
21	640HC	Monterey	VLCBOC	No	100%	20 minutes or less	Always	Do not have CCC prescribers	30 minutes or less	100%	23	208	11.1%
21	654	Reno	VAMC	Yes	100%	20 minutes or less	Always	Do not have CCC prescribers	30 minutes or less	90%	62	112	55.4%
21	654GE	Reno East	LCBOC	Yes	90%	20 minutes or less	Always	Do not have CCC prescribers	30 minutes or less	100%	120	195	61.5%
21	654GF	North Reno	LCBOC	Yes	90%	20 minutes or less	Always	Do not have CCC prescribers	30 minutes or less	100%	142	226	62.8%
21	662	San Francisco	VAMC	No	90%	20 minutes or less	Always	30 minutes or less	30 minutes or less	20%	123	323	38.1%
21	662GA	Santa Rosa	LCBOC	No	50%	21 to 40 minutes	Often	No CCC services	No CCC services	0%	13	121	10.7%
22	501	Albuquerque	VAMC	Yes	100%	20 minutes or less	Often	30 minutes or less	30 minutes or less	100%	179	856	20.9%
22	600	Tibor Rubin	VAMC	Yes	70%	20 minutes or less	Often	31 to 60 minutes	30 minutes or less	0%	285	695	41.0%
22	600GB	Santa Ana	VLCBOC	Yes	70%	20 minutes or less	Often	31 to 60 minutes	30 minutes or less	0%	11	88	12.5%
22	605	Loma Linda	VAMC	No	PCMHI not reported	PCMHI not reported	PCMHI not reported	PCMHI not reported	PCMHI not reported	PCMHI not reported	3	18	16.7%
22	605BZ	Loma Linda CBOC	VLCBOC	Yes	70%	21 to 40 minutes	Always	31 to 60 minutes	31 to 60 minutes	80%	333	1305	25.5%
22	605GA	Victorville	LCBOC	Yes	90%	20 minutes or less	Often	Do not have CCC prescribers	30 minutes or less	90%	36	166	21.7%

			Select Reports from the 2022 PACT PCMH Program Assessment*									PCMH Same-Day Access, FY22Q1 - Q2**		
							PACT PCMH providers conduct new patient assessments as brief functional assessments (<30 minutes)	Average length patient encounters with a PACT PCMH CCC prescribing psychiatric provider	Average length patient encounters with a PACT PCMH CCC behavioral health provider	Percentage of PACT PCMH staff co-located within PACT PC clinics	Number of new PCMH patients with a qualifying same-day encounter 10/4/21 - 4/3/22 (Numerator)	Number of patients with initial individual PCMH encounter 10/4/21 - 4/3/22 (Denominator)	Same-Day Access (Numerator / Denominator) %	
VISN	Facility Number	Facility Name	Facility Type	Both CCC and CM	Percentage of time PACT PCMH provider available for warm hand-offs	Typical wait time for appointment with PACT PCMH provider on same day as PACT PC appointment								
22	605GB	Murrieta	VLCBOC	No	90%	20 minutes or less	Often	Do not have CCC prescribers	30 minutes or less	100%	55	251	21.9%	
22	605GC	Palm Desert	LCBOC	Yes	90%	20 minutes or less	Always	Do not have CCC prescribers	31 to 60 minutes	90%	64	171	37.4%	
22	605GE	Rancho Cucamonga	LCBOC	Yes	70%	20 minutes or less	Sometimes	30 minutes or less	30 minutes or less	100%	78	225	34.7%	
22	644	Phoenix	VAMC	Yes	80%	20 minutes or less	Often	31 to 60 minutes	31 to 60 minutes	50%	65	186	34.9%	
22	644BY	Southeast	VLCBOC	Yes	100%	21 to 40 minutes	Always	30 minutes or less	30 minutes or less	50%	214	563	38.0%	
22	644GA	Northwest	VLCBOC	Yes	100%	21 to 40 minutes	Often	30 minutes or less	30 minutes or less	80%	87	349	24.9%	
22	644GC	Southwest	LCBOC	Yes	100%	20 minutes or less	Often	30 minutes or less	30 minutes or less	70%	70	264	26.5%	
22	644GE	Thunderbird	LCBOC	No	100%	21 to 40 minutes	Always	Do not have CCC prescribers	30 minutes or less	100%	28	120	23.3%	
22	644GH	Phoenix Midtown	VLCBOC	Yes	90%	20 minutes or less	Often	31 to 60 minutes	30 minutes or less	60%	283	561	50.4%	
22	649	Prescott	VAMC	No	90%	20 minutes or less	Always	31 to 60 minutes	31 to 60 minutes	100%	39	237	16.5%	
22	664	San Diego	VAMC	Yes	80%	21 to 40 minutes	Often	31 to 60 minutes	30 minutes or less	30%	77	182	42.3%	
22	664BY	Mission Valley	VLCBOC	Yes	100%	20 minutes or less	Often	31 to 60 minutes	31 to 60 minutes	60%	273	581	47.0%	
22	664GB	Oceanside	VLCBOC	Yes	100%	20 minutes or less	Often	31 to 60 minutes	30 minutes or less	50%	151	247	61.1%	
22	664GC	Chula Vista	VLCBOC	Yes	100%	20 minutes or less	Half the time	31 to 60 minutes	31 to 60 minutes	40%	83	267	31.1%	
22	664GD	Escondido	LCBOC	Yes	100%	41 to 60 minutes	Often	31 to 60 minutes	31 to 60 minutes	40%	9	22	40.9%	
22	678	Tucson	VAMC	No	90%	21 to 40 minutes	Often	31 to 60 minutes	31 to 60 minutes	70%	63	452	13.9%	
22	678GA	Sierra Vista	LCBOC	No	90%	21 to 40 minutes	Often	31 to 60 minutes	30 minutes or less	0%	2	133	1.5%	
22	678GB	Yuma	LCBOC	No	90%	21 to 40 minutes	Often	31 to 60 minutes	30 minutes or less	0%	3	141	2.1%	
22	678GF	Northwest Tucson	LCBOC	No	90%	21 to 40 minutes	Often	31 to 60 minutes	30 minutes or less	0%	12	125	9.6%	
22	691	West Los Angeles	VAMC	Yes	100%	20 minutes or less	Often	31 to 60 minutes	31 to 60 minutes	60%	99	393	25.2%	
22	691A4	Sepulveda	VAMC	Yes	100%	20 minutes or less	Often	30 minutes or less	30 minutes or less	100%	126	497	25.4%	
22	691GD	Bakersfield	LCBOC	Yes	30%	21 to 40 minutes	Always	31 to 60 minutes	30 minutes or less	0%	2	30	6.7%	

			Select Reports from the 2022 PACT PCMH Program Assessment*								PCMH Same-Day Access, FY22Q1 - Q2**		
VISN	Facility Number	Facility Name	Facility Type	Both CCC and CM	Percentage of time PACT PCMH provider available for warm hand-offs	Typical wait time for appointment with PACT PCMH provider on same day as PACT PC appointment	PACT PCMH providers conduct new patient assessments as brief functional assessments (<30 minutes)	Average length patient encounters with a PACT PCMH CCC prescribing psychiatric provider	Average length patient encounters with a PACT PCMH CCC behavioral health provider	Percentage of PACT PCMH staff co-located within PACT PC clinics	Number of new PCMH patients with a qualifying same-day encounter 10/4/21 - 4/3/22 (Numerator)	Number of patients with initial individual PCMH encounter 10/4/21 - 4/3/22 (Denominator)	Same-Day Access (Numerator / Denominator) %
22	691GE	Los Angeles	VLCBOC	Yes	40%	20 minutes or less	Always	30 minutes or less	30 minutes or less	50%	122	282	43.3%
22	691GG	Antelope Valley	LCBOC	No	90%	20 minutes or less	Always	Do not have CCC prescribers	30 minutes or less	0%	49	190	25.8%
22	691GL	Santa Maria	LCBOC	Yes	80%	20 minutes or less	Always	30 minutes or less	30 minutes or less	50%	7	96	7.3%
22	691GM	Oxnard	LCBOC	Yes	90%	21 to 40 minutes	Always	30 minutes or less	30 minutes or less	50%	35	206	17.0%
23	437	Fargo	VAMC	No	90%	20 minutes or less	Always	30 minutes or less	30 minutes or less	100%	90	207	43.5%
23	438	Sioux Falls	VAMC	Yes	90%	20 minutes or less	Often	30 minutes or less	30 minutes or less	100%	110	308	35.7%
23	568	Fort Meade	VAMC	Yes	90%	21 to 40 minutes	Always	Do not have CCC prescribers	30 minutes or less	90%	49	116	42.2%
23	568A4	Hot Springs	VAMC	Yes	100%	41 to 60 minutes	Often	Do not have CCC prescribers	31 to 60 minutes	100%	14	43	32.6%
23	568GA	Rapid City	LCBOC	Yes	90%	20 minutes or less	Always	Do not have CCC prescribers	30 minutes or less	90%	63	162	38.9%
23	618	Minneapolis	VAMC	Yes	90%	20 minutes or less	Always	30 minutes or less	30 minutes or less	90%	227	711	31.9%
23	618BY	Twin Ports	LCBOC	Yes	10%	20 minutes or less	Often	30 minutes or less	30 minutes or less	40%	27	163	16.6%
23	618GD	Maplewood	LCBOC	Yes	90%	20 minutes or less	Often	31 to 60 minutes	30 minutes or less	30%	30	142	21.1%
23	618GG	Rochester	LCBOC	No	PCMH not reported	PCMH not reported	PCMH not reported	PCMH not reported	PCMH not reported	PCMH not reported	3	14	21.4%
23	618GI	Northwest Metro	LCBOC	Yes	100%	20 minutes or less	Often	31 to 60 minutes	30 minutes or less	50%	18	140	12.9%
23	636	Omaha	VAMC	Yes	90%	20 minutes or less	Often	Do not have CCC prescribers	30 minutes or less	70%	72	384	18.8%
23	636A4	Grand Island	VAMC	Yes	100%	21 to 40 minutes	Always	Do not have CCC prescribers	30 minutes or less	100%	68	140	48.6%
23	636A5	Lincoln	VLCBOC	Yes	100%	21 to 40 minutes	Half the time	Do not have CCC prescribers	31 to 60 minutes	100%	16	152	10.5%
23	636A6	Des Moines	VAMC	Yes	100%	20 minutes or less	Always	30 minutes or less	30 minutes or less	60%	82	261	31.4%
23	636A8	Iowa City	VAMC	Yes	20%	Do not know	Always	30 minutes or less	30 minutes or less	20%	5	37	13.5%
23	636GF	Quad Cities	LCBOC	Yes	90%	20 minutes or less	Always	30 minutes or less	30 minutes or less	80%	46	140	32.9%
23	636GL	Bellevue	LCBOC	Yes	100%	20 minutes or less	Always	Do not have CCC prescribers	30 minutes or less	90%	9	107	8.4%
23	636GN	Cedar Rapids	LCBOC	Yes	100%	21 to 40 minutes	Often	31 to 60 minutes	30 minutes or less	50%	14	76	18.4%

			Select Reports from the 2022 PACT PCMHI Program Assessment*								PCMHI Same-Day Access, FY22Q1 - Q2**		
VISN	Facility Number	Facility Name	Facility Type	Both CCC and CM	Percentage of time PACT PCMHI provider available for warm hand-offs	Typical wait time for appointment with PACT PCMHI provider on same day as PACT PC appointment	PACT PCMHI providers conduct new patient assessments as brief functional assessments (<30 minutes)	Average length patient encounters with a PACT PCMHI CCC prescribing psychiatric provider	Average length patient encounters with a PACT PCMHI CCC behavioral health provider	Percentage of PACT PCMHI staff co-located within PACT PC clinics	Number of new PCMHI patients with a qualifying same-day encounter 10/4/21 - 4/3/22 (Numerator)	Number of patients with initial individual PCMHI encounter 10/4/21 - 4/3/22 (Denominator)	Same-Day Access (Numerator / Denominator) %
23	636GW	Coralville	LCBOC	Yes	90%	20 minutes or less	Often	30 minutes or less	30 minutes or less	80%	14	30	46.7%
23	656	St. Cloud	VAMC	Yes	100%	20 minutes or less	Always	Do not have CCC prescribers	30 minutes or less	100%	186	464	40.1%
23	656GA	Brainerd	LCBOC	Yes	100%	20 minutes or less	Always	Do not have CCC prescribers	30 minutes or less	100%	38	115	33.0%

***Definitions – Column Headers: 2022 PCMHI Program Assessment Data**

Both CCC and CM

Yes: Sites report having both CCC¹ and CM² services.

¹CCC: PCMHI services include co-located collaborative care delivered by PACT PCMHI providers (includes video telehealth [VTEL],

VA video connect [VVC], and phone services by staff based on-site) (question 11)

²CM: Site reports onsite CM services or the receipt of CM services from an off-site location (question 15)

No: No for CCC OR No for CM, as defined above.

Percentage of time PACT PCMHI provider available for warm hand-offs

Question 5: When the PACT PC clinic is open, what percentage of the time was a PACT PCMHI provider available for warm hand-offs and/or assessments (in-person or remote)?

Response Categories: 0%, 10%, 20%, 30%, 40%, 50%, 60%, 70%, 80%, 90%, 100%, Do not know

Typical wait time for appointment with PACT PCMHI provider on same day as PACT PC appointment

Question 6: Typically, how long was the wait for a visit with a PACT PCMHI provider on the same day as the PACT PC appointment (if patient must wait)? Visits may be in-person or remote.

Response Categories: 20 minutes or less, 21 to 40 minutes, 41 to 60 minutes, > 1 hour,

Same day appointments not available, Do not know

PACT PCMHI providers conduct new patient assessments as brief functional assessments (< 30 minutes)

Question 9a. How often did PACT PCMHI providers conduct new patient assessments as brief functional assessments (<30 minutes, not full biopsychosocial intake)?

Response Categories: Never, Sometimes, Half the time, Often, Always, Do not know

Average Length patient encounters with a PACT PCMHI CCC prescribing psychiatric provider

Question 13: On average, how long were patient encounters with a PACT PCMHI CCC prescribing psychiatric provider

(e.g., psychiatrist, nurse practitioner, clinical nurse specialist, physician assistant, advanced practice nurse, or clinical pharmacist/Pharm D)?

Response Categories: 30 minutes or less, 31 to 60 minutes, > 60 minutes, Do not know, We did not have PCMHI CCC prescribing psychiatric providers providing patient encounters

Average Length patient encounters with a PACT PCMHI CCC behavioral health provider

Question 14: On average, how long were patient encounters with a PACT PCMHI CCC behavioral health provider

(e.g., psychologist, social worker, licensed counselor, etc.)?

Response Categories: 30 minutes or less, 31 to 60 minutes, > 60 minutes, Do not know, We did not have PCMHI CCC behavioral health providers providing patient encounters

			Select Reports from the 2022 PACT PCMHI Program Assessment*								PCMHI Same-Day Access, FY22Q1 - Q2**		
VISN	Facility Number	Facility Name	Facility Type	Both CCC and CM	Percentage of time PACT PCMHI provider available for warm hand-offs	Typical wait time for appointment with PACT PCMHI provider on same day as PACT PC appointment	PACT PCMHI providers conduct new patient assessments as brief functional assessments (<30 minutes)	Average length patient encounters with a PACT PCMHI CCC prescribing psychiatric provider	Average length patient encounters with a PACT PCMHI CCC behavioral health provider	Percentage of PACT PCMHI staff co-located within PACT PC clinics	Number of new PCMHI patients with a qualifying same-day encounter 10/4/21 - 4/3/22 (Numerator)	Number of patients with initial individual PCMHI encounter 10/4/21 - 4/3/22 (Denominator)	Same-Day Access (Numerator / Denominator) %

Percentage of PACT PCMHI staff co-located within PACT PC clinics

Question 22: When the PACT PC clinic is open, what percentage of PACT PCMHI staff were co-located within PACT PC clinics (PCMHI staff located within the same suite as PC providers)?

Response Categories: 0% (No PCMHI staff co-located), 10%, 20%, 30%, 40%, 50%, 60%, 70%, 80%, 90%, 100% (All PCMHI staff co-located),

Do not know

****Definitions – Column Headers: PCMHI Same-Day Access, FY22Q1 - Q2 (PCMHI7 measure)**

Number of new PCMHI patients with a qualifying same day encounter 10/4/21 - 4/3/22 (Numerator) [CDW outpatient data]

The number of patients among those in the denominator who had a same day Primary Care, Emergency Department/Urgent Care, or select other non-Mental Health encounter on the same day as their initial PCMHI encounter at the same facility where the initial PCMHI encounter occurred, either in-person, by telephone, or by VA Video Connect.

Number of patients with initial PCMHI encounter 10/4/21 - 4/3/22 (Denominator) [CDW outpatient data]

The number of patients with an individual, non-Care Management PCMHI encounter who did not receive any PCMHI services in the prior 2 years at any site within the same facility and have an assigned primary care provider at the same facility. This encounter may be in-person, by telephone, or by VA Video Connect.

Same-Day Access, (Numerator / Denominator), %

The percent of patients with a new PCMHI encounter from 10/4/21 - 4/3/22 (new = no PCMHI encounters in 2 years prior to initial encounter at any site within same facility) that had a Primary Care, Emergency Department/Urgent Care, or select other non-Mental Health encounter on the same day as their initial PCMHI encounter (Column L Numerator/Column M Denominator).

Shaded cells in Column E highlight sites that did not indicate having both Co-located Collaborative Care and Care Management in the 2022 Program Assessment.

Primary Care-Mental Health Integration (PCMHI) Services Status: Findings from the 2022 PACT PCMHI Evaluation Program Assessment, by Facility, among Small and Medium CBOCs

Office of Mental Health Services and Suicide Prevention, SMITREC, National Primary Care - Mental Health Integration (PCMHI) Evaluation

Points of Contact: John McCarthy (John.McCarthy2@va.gov); Ben Szymanski (Benjamin.Szymanski@va.gov)

Date: 6/14/2022

Program Assessment was fielded 2/24/2022 to 5/4/2022 regarding services available as of 2/1/2022. N = 605 small and medium CBOCs completed with a 100% response rate; report includes updated information derived through field contacts as part of program assessment validation.

Please note: As of 2/1/2022, PCMHI Services were not required at Small and Medium CBOCs.

VISN	Facility Name	Station Number	Facility Type	PCMHI Services	Co-located Collaborative Care	Care Management	Both CCC and CM
1	Caribou	402GA	MCBOC	No	No	No	No
1	Calais	402GB	SCBOC	No	No	No	No
1	Rumford	402GC	MCBOC	No	No	No	No
1	Saco	402GD	MCBOC	No	No	No	No
1	Lincoln	402GF	SCBOC	No	No	No	No
1	Portland	402HC	MCBOC	Yes	Yes	No	No
1	Bennington	405GA	MCBOC	Yes	Yes	No	No
1	Brattleboro	405GC	SCBOC	Yes	Yes	No	No
1	Littleton	405HC	MCBOC	Yes	Yes	No	No
1	Keene	405HE	SCBOC	Yes	Yes	No	No
1	Rutland	405HF	MCBOC	Yes	Yes	No	No
1	Newport	405QB	SCBOC	Yes	Yes	No	No
1	Lynn	518GA	MCBOC	Yes	Yes	No	No
1	Haverhill	518GB	MCBOC	Yes	Yes	No	No
1	Gloucester	518GE	SCBOC	Yes	Yes	No	No
1	Causeway	523BZ	MCBOC	No	No	No	No
1	Framingham	523GA	MCBOC	No	No	No	No
1	Quincy	523GC	SCBOC	Yes	No	Yes	No
1	Plymouth	523GD	MCBOC	No	No	No	No
1	Portsmouth	608GA	MCBOC	Yes	Yes	Yes	Yes
1	Somerset	608GC	MCBOC	Yes	Yes	Yes	Yes
1	Conway	608GD	MCBOC	Yes	Yes	Yes	Yes
1	Tilton	608HA	MCBOC	Yes	Yes	Yes	Yes
1	Pittsfield	631GC	SCBOC	No	No	No	No
1	Greenfield	631GD	MCBOC	No	No	No	No
1	Fitchburg	631GF	MCBOC	No	No	No	No
1	New Bedford	650GA	MCBOC	No	No	No	No
1	Hyannis	650GB	MCBOC	No	No	No	No
1	Middletown	650GD	MCBOC	No	No	No	No
1	Waterbury	689GA	MCBOC	No	No	No	No
1	Stamford	689GB	SCBOC	No	No	No	No
1	Willimantic	689GC	MCBOC	No	No	No	No
1	Winsted	689GD	MCBOC	No	No	No	No
1	Danbury	689GE	MCBOC	No	No	No	No
1	Errera	689QA	MCBOC	No	No	No	No
2	White Plains	526GA	SCBOC	Yes	Yes	Yes	Yes
2	Yonkers	526GB	SCBOC	Yes	Yes	Yes	Yes
2	Thomas P. Noonan Jr.	526GD	SCBOC	Yes	Yes	Yes	Yes
2	Westport	528G2	SCBOC	Yes	Yes	No	No
2	Bainbridge	528G3	SCBOC	Yes	Yes	No	No
2	Elmira	528G4	MCBOC	Yes	Yes	Yes	Yes
2	Auburn	528G5	MCBOC	Yes	Yes	No	No
2	Fonda	528G6	SCBOC	Yes	Yes	No	No

VISN	Facility Name	Station Number	Facility Type	PCMHI Services	Co-located Collaborative Care	Care Management	Both CCC and CM
2	Catskill	528G7	SCBOC	Yes	Yes	No	No
2	Wellsville	528G8	SCBOC	Yes	Yes	Yes	Yes
2	Tompkins County	528G9	MCBOC	No	No	No	No
2	Jamestown	528GB	MCBOC	Yes	Yes	No	No
2	Dunkirk	528GC	MCBOC	Yes	Yes	No	No
2	Niagara Falls	528GD	SCBOC	Yes	Yes	No	No
2	Lockport	528GK	SCBOC	Yes	Yes	Yes	Yes
2	Massena	528GL	MCBOC	No	No	No	No
2	Watertown	528GO	MCBOC	No	No	No	No
2	Oswego	528GP	MCBOC	No	No	No	No
2	West Seneca	528GQ	MCBOC	Yes	Yes	No	No
2	Olean	528GR	MCBOC	Yes	Yes	No	No
2	Glens Falls	528GT	MCBOC	Yes	Yes	No	No
2	Plattsburgh	528GV	MCBOC	Yes	Yes	No	No
2	Schenectady	528GW	MCBOC	Yes	Yes	No	No
2	Clifton Park	528GY	MCBOC	Yes	Yes	No	No
2	Kingston	528GZ	MCBOC	Yes	Yes	No	No
2	Wellsboro	528QF	SCBOC	Yes	Yes	Yes	Yes
2	Saranac Lake	528QK	SCBOC	Yes	Yes	No	No
2	Hamilton	561GA	MCBOC	Yes	Yes	No	No
2	Jersey City	561GE	SCBOC	Yes	Yes	No	No
2	Piscataway	561GF	MCBOC	Yes	Yes	Yes	Yes
2	Morristown	561GH	MCBOC	No	No	No	No
2	Tinton Falls	561GI	MCBOC	Yes	Yes	Yes	Yes
2	Paterson	561GJ	SCBOC	Yes	Yes	Yes	Yes
2	Sussex	561GK	SCBOC	Yes	Yes	Yes	Yes
2	New City	620GA	MCBOC	Yes	Yes	No	No
2	Carmel	620GB	MCBOC	Yes	Yes	No	No
2	Goshen	620GD	MCBOC	Yes	Yes	No	No
2	Port Jervis	620GE	MCBOC	Yes	Yes	No	No
2	Monticello	620GF	SCBOC	Yes	Yes	No	No
2	Poughkeepsie	620GG	MCBOC	Yes	Yes	No	No
2	Eastern Dutchess	620GH	SCBOC	Yes	Yes	No	No
2	Harlem	630GA	SCBOC	No	No	No	No
2	Staten Island Community	630GB	MCBOC	No	No	No	No
2	East Meadow	632GA	MCBOC	Yes	Yes	Yes	Yes
2	Valley Stream	632HA	SCBOC	Yes	No	Yes	No
2	Riverhead	632HB	MCBOC	Yes	No	Yes	No
2	Bay Shore	632HC	MCBOC	Yes	No	Yes	No
2	Patchogue	632HD	MCBOC	Yes	No	Yes	No
4	Cape May County	460GD	MCBOC	Yes	Yes	Yes	Yes
4	Atlantic County	460HE	MCBOC	Yes	Yes	Yes	Yes
4	Cumberland County	460HG	MCBOC	Yes	Yes	Yes	Yes
4	DuBois	503GB	MCBOC	Yes	Yes	Yes	Yes
4	State College	503GC	MCBOC	Yes	Yes	Yes	Yes
4	Huntingdon County	503GD	MCBOC	Yes	Yes	Yes	Yes
4	Indiana County	503GE	MCBOC	Yes	Yes	Yes	Yes
4	Michael A. Marzano	529GA	MCBOC	Yes	Yes	Yes	Yes
4	Lawrence County	529GB	MCBOC	Yes	Yes	Yes	Yes
4	Armstrong County	529GC	MCBOC	Yes	Yes	Yes	Yes
4	Clarion County	529GD	SCBOC	Yes	Yes	Yes	Yes
4	Cranberry Township	529GF	MCBOC	Yes	Yes	Yes	Yes
4	Delaware County	542GA	MCBOC	Yes	Yes	No	No
4	West Norriton	542GE	MCBOC	Yes	Yes	No	No
4	Crawford County	562GA	MCBOC	Yes	Yes	Yes	Yes

VISN	Facility Name	Station Number	Facility Type	PCMHI Services	Co-located Collaborative Care	Care Management	Both CCC and CM
4	Ashtabula County	562GB	MCBOC	Yes	Yes	Yes	Yes
4	McKean County	562GC	SCBOC	Yes	Yes	Yes	Yes
4	Venango County	562GD	MCBOC	Yes	Yes	Yes	Yes
4	Warren County	562GE	MCBOC	Yes	Yes	Yes	Yes
4	Lancaster County	595GC	MCBOC	Yes	Yes	Yes	Yes
4	Berks County	595GD	MCBOC	Yes	Yes	Yes	Yes
4	Schuylkill County	595GF	MCBOC	Yes	Yes	Yes	Yes
4	Camden	642GF	MCBOC	Yes	Yes	Yes	Yes
4	West Philadelphia	642GH	SCBOC	Yes	Yes	Yes	Yes
4	Beaver County	646GC	MCBOC	Yes	Yes	Yes	Yes
4	Washington County	646GD	MCBOC	Yes	No	Yes	No
4	Fayette County	646GE	MCBOC	Yes	No	Yes	No
4	Sayre	693GA	MCBOC	No	No	No	No
4	Williamsport	693GB	MCBOC	No	No	No	No
4	Tobyhanna	693GC	SCBOC	No	No	No	No
4	Columbia County	693GF	SCBOC	No	No	No	No
4	Northampton County	693GG	SCBOC	No	No	No	No
4	Wayne County	693QA	SCBOC	No	No	No	No
5	Cambridge	512GA	MCBOC	No	No	No	No
5	Pocomoke City	512GE	MCBOC	No	No	No	No
5	Eastern Baltimore County	512GF	MCBOC	Yes	Yes	Yes	Yes
5	Greenbrier County	517GB	MCBOC	Yes	Yes	Yes	Yes
5	Princeton	517QA	MCBOC	Yes	No	Yes	No
5	Tucker County	540GA	SCBOC	Yes	Yes	Yes	Yes
5	Wood County	540GB	MCBOC	Yes	Yes	Yes	Yes
5	Braxton County	540GC	SCBOC	Yes	Yes	Yes	Yes
5	Monongalia County	540GD	MCBOC	Yes	Yes	Yes	Yes
5	Prestonsburg	581GA	MCBOC	Yes	Yes	No	No
5	Gallipolis	581GG	SCBOC	Yes	Yes	No	No
5	Lenore	581GH	SCBOC	Yes	Yes	No	No
5	Cumberland	613GA	MCBOC	Yes	Yes	Yes	Yes
5	Hagerstown	613GB	MCBOC	Yes	Yes	Yes	Yes
5	Franklin	613GD	SCBOC	No	No	No	No
5	Petersburg	613GE	SCBOC	No	No	No	No
5	Harrisonburg	613GF	MCBOC	Yes	Yes	Yes	Yes
5	Southeast Washington	688GB	SCBOC	Yes	Yes	Yes	Yes
5	Charlotte Hall	688GD	MCBOC	Yes	Yes	Yes	Yes
5	Montgomery County	688GF	MCBOC	Yes	Yes	Yes	Yes
5	Lexington Park	688GG	MCBOC	Yes	Yes	Yes	Yes
6	Morehead City	558GC	MCBOC	No	No	No	No
6	Clayton-East Raleigh	558GH	MCBOC	Yes	Yes	Yes	Yes
6	Hamlet	565GD	MCBOC	Yes	Yes	No	No
6	Robeson County	565GE	MCBOC	Yes	Yes	No	No
6	Goldsboro	565GF	MCBOC	Yes	Yes	No	No
6	Lee County	565GG	MCBOC	Yes	Yes	No	No
6	Brunswick County	565GH	MCBOC	Yes	Yes	No	No
6	Jacksonville 2	565GJ	SCBOC	No	No	No	No
6	Albemarle	590GC	MCBOC	Yes	Yes	Yes	Yes
6	Portsmouth	590GE	MCBOC	Yes	Yes	Yes	Yes
6	Rutherford County	637GB	MCBOC	Yes	Yes	Yes	Yes
6	Charlottesville	652GE	MCBOC	Yes	Yes	Yes	Yes
6	Emporia	652GF	MCBOC	Yes	Yes	Yes	Yes
6	Tazewell	658GA	SCBOC	No	No	No	No
6	Danville	658GB	MCBOC	Yes	Yes	Yes	Yes
6	Lynchburg	658GC	MCBOC	Yes	Yes	No	No

VISN	Facility Name	Station Number	Facility Type	PCMHI Services	Co-located Collaborative Care	Care Management	Both CCC and CM
6	Staunton	658GD	MCBOC	Yes	Yes	No	No
6	Wytheville	658GE	MCBOC	Yes	No	No	No
7	Blairsville	508GJ	MCBOC	Yes	Yes	Yes	Yes
7	Rome	508GL	MCBOC	Yes	Yes	Yes	Yes
7	Pickens County	508GM	MCBOC	Yes	Yes	Yes	Yes
7	Covington	508GN	MCBOC	Yes	Yes	Yes	Yes
7	Aiken	509GB	MCBOC	Yes	Yes	No	No
7	Ray Hendrix Department Of Veterans Affairs	509QA	MCBOC	Yes	Yes	No	No
7	Florence	521GC	MCBOC	No	No	No	No
7	Rainbow City	521GD	MCBOC	No	No	No	No
7	Oxford	521GE	MCBOC	No	No	No	No
7	Jasper	521GF	MCBOC	No	No	No	No
7	Bessemer	521GG	MCBOC	No	No	No	No
7	Childersburg	521GH	MCBOC	Yes	Yes	No	No
7	Guntersville	521GI	MCBOC	No	No	No	No
7	Orangeburg	544GE	MCBOC	Yes	Yes	No	No
7	Milledgeville	557GC	MCBOC	Yes	Yes	No	No
7	Brunswick	557GE	MCBOC	Yes	Yes	No	No
7	Tifton	557GF	MCBOC	Yes	Yes	No	No
7	Monroe County	619GE	SCBOC	Yes	Yes	Yes	Yes
7	Columbus Downtown	619GG	SCBOC	Yes	Yes	No	No
7	Dothan 2	619QA	MCBOC	Yes	Yes	Yes	Yes
7	Selma	679GA	SCBOC	Yes	Yes	Yes	Yes
8	St. Petersburg	516GB	MCBOC	Yes	Yes	Yes	Yes
8	Miami Flagler	546GA	MCBOC	No	No	No	No
8	Key West	546GB	MCBOC	Yes	No	Yes	No
8	Pembroke Pines	546GD	MCBOC	Yes	No	No	No
8	Key Largo	546GE	SCBOC	Yes	No	Yes	No
8	Hollywood	546GF	MCBOC	Yes	Yes	Yes	Yes
8	Deerfield Beach	546GH	MCBOC	Yes	Yes	Yes	Yes
8	Boca Raton	548GD	MCBOC	Yes	Yes	Yes	Yes
8	Vero Beach	548GE	MCBOC	Yes	Yes	Yes	Yes
8	Okeechobee	548GF	MCBOC	Yes	Yes	Yes	Yes
8	St. Marys	573GJ	MCBOC	No	No	No	No
8	Marianna	573GK	MCBOC	No	No	No	No
8	Palatka	573GL	MCBOC	No	No	No	No
8	Waycross	573GM	MCBOC	No	No	No	No
8	Perry	573GN	SCBOC	Yes	Yes	Yes	Yes
8	Middleburg	573GO	MCBOC	Yes	Yes	Yes	Yes
8	Saint Croix	672GA	SCBOC	No	No	No	No
8	Saint Thomas	672GB	SCBOC	No	No	No	No
8	Arecibo	672GC	MCBOC	Yes	Yes	No	No
8	Ceiba	672GD	MCBOC	Yes	Yes	Yes	Yes
8	Guayama	672GE	MCBOC	No	No	No	No
8	Comerio	672QA	SCBOC	No	No	No	No
8	Utuaado	672QB	SCBOC	No	No	No	No
8	Vieques	672QC	SCBOC	Yes	Yes	Yes	Yes
8	Zephyrhills	673GF	MCBOC	Yes	Yes	Yes	Yes
8	Palm Bay	675QG	MCBOC	Yes	Yes	Yes	Yes
9	Morehead	596GB	MCBOC	Yes	Yes	Yes	Yes
9	Hazard	596GC	MCBOC	Yes	Yes	No	No
9	Berea	596GD	MCBOC	Yes	Yes	Yes	Yes
9	Grayson County	603GF	MCBOC	Yes	Yes	Yes	Yes
9	Scott County	603GG	MCBOC	Yes	Yes	Yes	Yes
9	Carrollton	603GH	MCBOC	Yes	Yes	Yes	Yes

VISN	Facility Name	Station Number	Facility Type	PCMH Services	Co-located Collaborative Care	Care Management	Both CCC and CM
9	Tupelo	614GA	MCBOC	Yes	Yes	No	No
9	Jonesboro	614GB	MCBOC	Yes	Yes	No	No
9	Holly Springs	614GC	SCBOC	No	No	No	No
9	Savannah	614GD	SCBOC	No	No	No	No
9	Dyersburg	614GI	MCBOC	Yes	Yes	No	No
9	Helena	614GN	SCBOC	Yes	Yes	Yes	Yes
9	Rogersville	621GA	MCBOC	No	No	No	No
9	Norton	621GC	MCBOC	Yes	Yes	Yes	Yes
9	Morristown	621GG	MCBOC	Yes	Yes	Yes	Yes
9	Dannie A. Carr Veterans Outpatient Clinic	621GI	MCBOC	No	No	No	No
9	Bristol	621GJ	MCBOC	Yes	Yes	Yes	Yes
9	Campbell County	621GK	MCBOC	No	No	No	No
9	Mountain City	621GO	MCBOC	No	No	No	No
9	Jonesville	621QA	SCBOC	No	No	No	No
9	Marion	621QB	SCBOC	No	No	No	No
9	Dover	626GA	MCBOC	Yes	Yes	Yes	Yes
9	Bowling Green	626GC	MCBOC	No	No	No	No
9	Tullahoma	626GG	SCBOC	No	No	No	No
9	Hopkinsville	626GJ	MCBOC	No	No	No	No
9	McMinnville	626GK	MCBOC	No	No	No	No
9	Roane County	626GL	MCBOC	No	No	No	No
9	Maury County	626GM	MCBOC	No	No	No	No
9	Athens	626GN	MCBOC	No	No	No	No
9	Gallatin	626GP	MCBOC	Yes	Yes	Yes	Yes
9	Albion Street	626QA	MCBOC	Yes	Yes	Yes	Yes
10	Flint	506GB	MCBOC	No	No	No	No
10	Jackson	506GC	MCBOC	No	No	No	No
10	Lansing	515GB	MCBOC	Yes	Yes	Yes	Yes
10	Benton Harbor	515GC	MCBOC	Yes	Yes	Yes	Yes
10	Athens	538GA	MCBOC	No	No	No	No
10	Portsmouth	538GB	MCBOC	No	No	No	No
10	Marietta	538GC	MCBOC	No	No	No	No
10	Lancaster	538GD	MCBOC	No	No	No	No
10	Cambridge	538GE	MCBOC	No	No	No	No
10	Wilmington	538GF	SCBOC	No	No	No	No
10	Bellevue	539GA	MCBOC	Yes	Yes	Yes	Yes
10	Dearborn	539GC	MCBOC	Yes	Yes	Yes	Yes
10	Florence	539GD	MCBOC	Yes	Yes	Yes	Yes
10	Hamilton	539GE	MCBOC	Yes	Yes	Yes	Yes
10	Georgetown	539GF	SCBOC	Yes	Yes	Yes	Yes
10	Sandusky	541GC	MCBOC	Yes	Yes	No	No
10	East Liverpool	541GH	MCBOC	Yes	Yes	No	No
10	Warren	541GI	MCBOC	Yes	Yes	No	No
10	New Philadelphia	541GJ	MCBOC	No	No	No	No
10	Ravenna	541GK	MCBOC	Yes	Yes	No	No
10	Cleveland -Euclid	541QB	MCBOC	Yes	Yes	Yes	Yes
10	Middletown	552GA	MCBOC	No	No	No	No
10	Lima	552GB	MCBOC	No	No	No	No
10	Richmond	552GC	MCBOC	No	No	No	No
10	Springfield	552GD	MCBOC	No	No	No	No
10	Wright-Patterson	552GF	SCBOC	Yes	Yes	Yes	Yes
10	Yale	553GA	MCBOC	Yes	No	No	No
10	Pontiac	553GB	MCBOC	Yes	Yes	No	No
10	Piquette Street	553QA	SCBOC	No	No	No	No
10	Terre Haute	583GA	MCBOC	No	No	No	No

VISN	Facility Name	Station Number	Facility Type	PCMHI Services	Co-located Collaborative Care	Care Management	Both CCC and CM
10	Martinsville	583GC	MCBOC	Yes	Yes	Yes	Yes
10	Lafayette	583GE	MCBOC	Yes	Yes	Yes	Yes
10	Wakeman	583GF	MCBOC	Yes	Yes	Yes	Yes
10	Shelbyville	583GG	MCBOC	No	No	No	No
10	Muncie	610GB	MCBOC	Yes	Yes	No	No
10	Goshen	610GC	MCBOC	No	No	No	No
10	Peru	610GD	MCBOC	No	No	No	No
10	Gaylord	655GA	MCBOC	No	No	No	No
10	Oscoda	655GC	MCBOC	No	No	No	No
10	Lieutenant Colonel Clement C. Van Wagoner	655GD	MCBOC	No	No	No	No
10	Clare	655GE	MCBOC	No	No	No	No
10	Bad Axe	655GF	MCBOC	No	No	No	No
10	Cadillac	655GG	MCBOC	No	No	No	No
10	Cheboygan County	655GH	SCBOC	No	No	No	No
10	Grayling	655GI	MCBOC	No	No	No	No
10	Zanesville	757GA	MCBOC	Yes	Yes	Yes	Yes
10	Grove City	757GB	MCBOC	Yes	Yes	No	No
10	Marion	757GC	MCBOC	Yes	Yes	No	No
10	Daniel L. Kinnard	757GD	MCBOC	Yes	Yes	No	No
12	Chicago Heights	537GA	MCBOC	No	No	No	No
12	Lakeside	537GD	MCBOC	No	No	No	No
12	Auburn Gresham	537HA	MCBOC	No	No	No	No
12	Decatur	550GA	MCBOC	Yes	Yes	Yes	Yes
12	Springfield	550GD	MCBOC	Yes	Yes	Yes	Yes
12	Mattoon	550GF	MCBOC	Yes	Yes	Yes	Yes
12	Bloomington	550GG	MCBOC	Yes	Yes	Yes	Yes
12	Evanston	556GA	SCBOC	No	No	No	No
12	McHenry	556GC	MCBOC	Yes	Yes	No	No
12	Kenosha	556GD	MCBOC	No	No	No	No
12	Kankakee County	578GC	MCBOC	Yes	No	Yes	No
12	Hoffman Estates	578GE	MCBOC	Yes	Yes	Yes	Yes
12	LaSalle	578GF	MCBOC	Yes	No	Yes	No
12	Hancock	585GA	MCBOC	Yes	Yes	Yes	Yes
12	Rhineland	585GB	MCBOC	Yes	Yes	Yes	Yes
12	Menominee	585GC	MCBOC	Yes	Yes	Yes	Yes
12	Ironwood	585GD	SCBOC	Yes	Yes	Yes	Yes
12	Manistique	585GF	SCBOC	Yes	Yes	Yes	Yes
12	Marquette	585HA	MCBOC	Yes	Yes	Yes	Yes
12	Sault Saint Marie	585HB	SCBOC	Yes	Yes	Yes	Yes
12	Janesville	607GC	MCBOC	Yes	Yes	Yes	Yes
12	Baraboo	607GD	MCBOC	No	No	No	No
12	Beaver Dam	607GE	MCBOC	No	No	No	No
12	Freeport	607GF	MCBOC	No	No	No	No
12	Wausau	676GA	MCBOC	No	No	No	No
12	Clark County	676GE	SCBOC	Yes	Yes	Yes	Yes
12	Union Grove	695GA	MCBOC	Yes	Yes	No	No
12	Cleveland	695GC	MCBOC	Yes	Yes	No	No
15	Warrensburg	589G1	MCBOC	Yes	Yes	Yes	Yes
15	Dodge City	589G2	SCBOC	No	No	No	No
15	Hays	589G4	MCBOC	Yes	Yes	Yes	Yes
15	Parsons	589G5	MCBOC	No	No	No	No
15	Hutchinson	589G7	MCBOC	Yes	Yes	No	No
15	Belton	589GB	MCBOC	Yes	Yes	Yes	Yes
15	Paola	589GC	SCBOC	Yes	Yes	Yes	Yes
15	Nevada	589GD	MCBOC	Yes	Yes	Yes	Yes

VISN	Facility Name	Station Number	Facility Type	PCMHI Services	Co-located Collaborative Care	Care Management	Both CCC and CM
15	Kirksville	589GE	MCBOC	Yes	Yes	No	No
15	Lake of the Ozarks	589GH	MCBOC	Yes	Yes	No	No
15	St. Joseph	589GI	MCBOC	Yes	Yes	Yes	Yes
15	Wyandotte County	589GJ	SCBOC	Yes	No	Yes	No
15	Chanute	589GM	SCBOC	Yes	No	Yes	No
15	Lieutenant General Richard J. Seitz Community-	589GR	MCBOC	Yes	Yes	Yes	Yes
15	Lawrence	589GU	MCBOC	Yes	Yes	Yes	Yes
15	Fort Scott	589GV	SCBOC	Yes	Yes	Yes	Yes
15	Salina	589GW	MCBOC	Yes	Yes	No	No
15	Mexico	589GX	MCBOC	Yes	Yes	No	No
15	St. James	589GY	MCBOC	Yes	Yes	No	No
15	Cameron	589GZ	SCBOC	Yes	Yes	Yes	Yes
15	Sedalia	589JA	MCBOC	Yes	Yes	No	No
15	Excelsior Springs	589JB	MCBOC	Yes	Yes	Yes	Yes
15	Shawnee	589JC	MCBOC	Yes	Yes	Yes	Yes
15	Marshfield	589JD	MCBOC	No	No	No	No
15	Platte City	589JE	SCBOC	Yes	Yes	Yes	Yes
15	Lenexa	589JG	MCBOC	Yes	Yes	Yes	Yes
15	West Plains	657GF	MCBOC	Yes	Yes	Yes	Yes
15	Paragould	657GG	MCBOC	Yes	Yes	Yes	Yes
15	Cape Girardeau	657GH	MCBOC	Yes	Yes	Yes	Yes
15	Farmington	657GI	MCBOC	Yes	Yes	Yes	Yes
15	Mount Vernon	657GK	MCBOC	Yes	Yes	Yes	Yes
15	Paducah	657GL	MCBOC	Yes	Yes	Yes	Yes
15	Effingham	657GM	MCBOC	Yes	Yes	Yes	Yes
15	Madisonville	657GO	SCBOC	Yes	Yes	Yes	Yes
15	Owensboro	657GP	MCBOC	Yes	Yes	Yes	Yes
15	Vincennes	657GQ	MCBOC	Yes	Yes	Yes	Yes
15	Mayfield	657GR	MCBOC	Yes	Yes	Yes	Yes
15	Franklin County	657GS	MCBOC	Yes	Yes	No	No
15	Carbondale	657GT	MCBOC	Yes	Yes	Yes	Yes
15	Harrisburg	657GU	SCBOC	Yes	Yes	Yes	Yes
15	Sikeston	657GV	MCBOC	Yes	Yes	Yes	Yes
15	Pocahontas	657GW	SCBOC	Yes	Yes	Yes	Yes
15	Manchester Avenue	657GY	MCBOC	Yes	Yes	No	No
15	Jefferson Avenue	657QB	MCBOC	No	No	No	No
16	Jennings	502GA	MCBOC	No	No	No	No
16	Douglas Fournet Department of Veterans	502GE	MCBOC	Yes	Yes	Yes	Yes
16	Fort Polk	502GF	MCBOC	No	No	No	No
16	Natchitoches	502GG	SCBOC	No	No	No	No
16	Harrison	564GA	MCBOC	Yes	Yes	Yes	Yes
16	Ozark	564GD	MCBOC	No	No	No	No
16	Jay	564GE	MCBOC	No	No	No	No
16	Galveston County	580GC	MCBOC	Yes	Yes	Yes	Yes
16	Lake Jackson	580GF	MCBOC	No	No	No	No
16	Kingwood	580GK	SCBOC	Yes	Yes	No	No
16	Sugar Land	580GL	SCBOC	Yes	Yes	Yes	Yes
16	Kosciusko	586GA	MCBOC	Yes	Yes	Yes	Yes
16	Meridian	586GB	MCBOC	No	No	No	No
16	Greenville	586GC	MCBOC	No	No	No	No
16	Natchez	586GE	SCBOC	Yes	Yes	Yes	Yes
16	Columbus	586GF	MCBOC	No	No	No	No
16	McComb	586GG	MCBOC	No	No	No	No
16	Mountain Home	598GA	MCBOC	Yes	Yes	Yes	Yes
16	El Dorado	598GB	MCBOC	Yes	Yes	Yes	Yes

VISN	Facility Name	Station Number	Facility Type	PCMHI Services	Co-located Collaborative Care	Care Management	Both CCC and CM
16	Mena	598GD	MCBOC	Yes	Yes	Yes	Yes
16	Pine Bluff	598GE	MCBOC	Yes	Yes	Yes	Yes
16	Searcy	598GF	MCBOC	Yes	Yes	Yes	Yes
16	Russellville	598GH	MCBOC	Yes	Yes	Yes	Yes
16	Houma	629GA	MCBOC	No	No	No	No
16	Hammond	629GB	MCBOC	No	No	No	No
16	Slidell	629GC	MCBOC	No	No	No	No
16	St. John	629GD	MCBOC	No	No	No	No
16	Franklin	629GE	SCBOC	No	No	No	No
16	Bogalusa	629GF	SCBOC	No	No	No	No
16	Texarkana	667GA	MCBOC	No	No	No	No
17	Clovis	504BZ	SCBOC	Yes	Yes	Yes	Yes
17	Childress	504GA	SCBOC	No	No	No	No
17	Dalhart	504HB	SCBOC	No	No	No	No
17	Wilson and Young Medal of Honor	519GA	MCBOC	Yes	Yes	Yes	Yes
17	Hobbs	519GB	SCBOC	No	No	No	No
17	Fort Stockton	519GD	SCBOC	No	No	No	No
17	San Angelo	519HF	MCBOC	Yes	Yes	Yes	Yes
17	Decatur	549GE	MCBOC	Yes	Yes	Yes	Yes
17	Granbury	549GF	MCBOC	Yes	Yes	Yes	Yes
17	Greenville	549GH	MCBOC	Yes	Yes	Yes	Yes
17	Sherman	549GJ	MCBOC	Yes	Yes	Yes	Yes
17	Grand Prairie	549GM	MCBOC	Yes	Yes	Yes	Yes
17	Victoria	671GB	MCBOC	Yes	Yes	Yes	Yes
17	Seguin	671GN	SCBOC	Yes	Yes	Yes	Yes
17	North Bexar	671GR	MCBOC	Yes	Yes	Yes	Yes
17	Palestine	674GA	MCBOC	Yes	Yes	No	No
17	Brownwood	674GB	MCBOC	No	No	No	No
17	Bryan	674GC	MCBOC	Yes	Yes	No	No
17	LaGrange	674HB	SCBOC	Yes	Yes	No	No
17	Laredo	740GD	MCBOC	No	No	No	No
17	Las Cruces	756GA	MCBOC	No	No	No	No
17	El Paso Westside	756GC	MCBOC	No	No	No	No
17	El Paso Northeast	756GD	MCBOC	No	No	No	No
19	Anaconda	436GA	MCBOC	Yes	Yes	Yes	Yes
19	Travis W. Atkins Department of Veterans	436GD	MCBOC	Yes	Yes	Yes	Yes
19	Glasgow	436GI	SCBOC	Yes	Yes	Yes	Yes
19	Glendive	436GK	SCBOC	Yes	Yes	Yes	Yes
19	Cut Bank	436GL	SCBOC	Yes	Yes	Yes	Yes
19	Lewistown	436GM	SCBOC	Yes	Yes	Yes	Yes
19	Merril Lundman	436HC	SCBOC	Yes	Yes	Yes	Yes
19	Hamilton	436QA	SCBOC	Yes	Yes	Yes	Yes
19	Plentywood	436QB	SCBOC	Yes	Yes	Yes	Yes
19	Sidney	442GB	SCBOC	No	No	No	No
19	Wheatland VA Mobile Clinic	442HK	SCBOC	No	No	No	No
19	Rawlins	442QA	SCBOC	No	No	No	No
19	Torrington VA Mobile Clinic	442QB	SCBOC	No	No	No	No
19	Laramie VA Mobile Clinic	442QD	SCBOC	No	No	No	No
19	Sterling	442QE	SCBOC	No	No	No	No
19	Alamosa	554GF	SCBOC	Yes	Yes	Yes	Yes
19	La Junta	554GG	SCBOC	Yes	Yes	Yes	Yes
19	Lamar	554GH	SCBOC	Yes	Yes	Yes	Yes
19	Burlington	554GI	SCBOC	Yes	Yes	Yes	Yes
19	Union Boulevard	554GK	MCBOC	Yes	Yes	Yes	Yes
19	Salida	554QC	SCBOC	Yes	Yes	Yes	Yes

VISN	Facility Name	Station Number	Facility Type	PCMHI Services	Co-located Collaborative Care	Care Management	Both CCC and CM
19	Montrose	575GA	MCBOC	No	No	No	No
19	Major William Edward Adams Department of	575GB	SCBOC	No	No	No	No
19	Glenwood Springs	575QA	SCBOC	No	No	No	No
19	Moab	575QB	SCBOC	No	No	No	No
19	McAlester	623GA	MCBOC	Yes	Yes	No	No
19	Vinita	623GB	MCBOC	No	No	No	No
19	McCurtain County	623GC	SCBOC	No	No	No	No
19	Wichita Falls	635GB	MCBOC	No	No	No	No
19	Blackwell	635GC	SCBOC	No	No	No	No
19	Ada	635GD	MCBOC	No	No	No	No
19	Stillwater	635GE	MCBOC	No	No	No	No
19	Altus	635GF	SCBOC	No	No	No	No
19	Enid	635GG	SCBOC	No	No	No	No
19	Clinton	635GH	SCBOC	No	No	No	No
19	Norman	635GI	MCBOC	Yes	Yes	Yes	Yes
19	Yukon	635GJ	MCBOC	Yes	Yes	Yes	Yes
19	Ardmore	635HB	MCBOC	No	No	No	No
19	Fourteenth Street	635QC	SCBOC	No	No	No	No
19	Tinker	635QE	SCBOC	Yes	Yes	Yes	Yes
19	Pocatello	660GA	MCBOC	Yes	No	Yes	No
19	Roosevelt	660GD	SCBOC	No	No	No	No
19	Orem	660GE	MCBOC	Yes	Yes	Yes	Yes
19	St. George	660GG	MCBOC	Yes	Yes	No	No
19	Elko	660GK	SCBOC	No	No	No	No
19	Idaho Falls	660QA	MCBOC	Yes	No	Yes	No
19	Price	660QB	SCBOC	No	No	No	No
19	Cache Valley	660QD	SCBOC	No	No	No	No
19	Casper	666GB	MCBOC	Yes	Yes	Yes	Yes
19	Riverton	666GC	SCBOC	Yes	Yes	Yes	Yes
19	Cody	666GD	SCBOC	Yes	Yes	Yes	Yes
19	Gillette	666GE	SCBOC	Yes	Yes	Yes	Yes
19	Rock Springs	666GF	SCBOC	Yes	Yes	Yes	Yes
19	Afton	666QA	SCBOC	Yes	Yes	Yes	Yes
19	Evanston	666QB	SCBOC	Yes	Yes	Yes	Yes
19	Worland	666QC	SCBOC	Yes	Yes	Yes	Yes
20	Fairbanks	463GA	MCBOC	No	No	No	No
20	Kenai	463GB	MCBOC	No	No	No	No
20	Mat-Su	463GC	MCBOC	No	No	No	No
20	Homer	463GD	SCBOC	No	No	No	No
20	Juneau	463GE	SCBOC	No	No	No	No
20	Twin Falls	531GE	MCBOC	Yes	Yes	No	No
20	Eastern Oregon	531GH	SCBOC	Yes	Yes	No	No
20	Mountain Home	531GI	SCBOC	Yes	Yes	No	No
20	Salmon	531GJ	SCBOC	Yes	Yes	No	No
20	North Coast	648GD	MCBOC	Yes	Yes	No	No
20	Newport	648GH	SCBOC	No	No	No	No
20	Portland	648GI	MCBOC	No	No	No	No
20	Loren R. Kaufman	648GJ	MCBOC	No	No	No	No
20	North Bend	653GA	MCBOC	Yes	Yes	No	No
20	Brookings	653GB	SCBOC	Yes	Yes	No	No
20	Bellevue	663GA	MCBOC	No	No	No	No
20	South Sound	663GD	MCBOC	No	No	No	No
20	North Olympic Peninsula	663GE	MCBOC	Yes	Yes	Yes	Yes
20	Edmonds	663GH	MCBOC	Yes	Yes	Yes	Yes
20	Olympia	663GI	SCBOC	Yes	Yes	Yes	Yes

VISN	Facility Name	Station Number	Facility Type	PCMHI Services	Co-located Collaborative Care	Care Management	Both CCC and CM
20	Puyallup	663GJ	SCBOC	Yes	Yes	Yes	Yes
20	Wenatchee	668GA	MCBOC	Yes	Yes	Yes	Yes
20	Lewiston	687GB	MCBOC	Yes	Yes	No	No
20	La Grande	687GC	SCBOC	Yes	Yes	Yes	Yes
20	Yakima	687HA	MCBOC	Yes	Yes	Yes	Yes
20	Morrow County	687QB	SCBOC	No	No	No	No
20	Klamath Falls	692GA	MCBOC	Yes	Yes	No	No
20	Grants Pass	692GB	MCBOC	Yes	Yes	No	No
21	Maui	459GA	MCBOC	Yes	Yes	No	No
21	Hilo	459GB	MCBOC	Yes	Yes	No	No
21	Kailua-Kona	459GC	MCBOC	Yes	Yes	No	No
21	Lihue	459GD	MCBOC	Yes	Yes	No	No
21	Guam	459GE	MCBOC	Yes	Yes	No	No
21	Faleomavaega Eni Fa'aua'a Hunkin	459GF	SCBOC	Yes	Yes	No	No
21	Leeward Oahu	459GG	MCBOC	Yes	Yes	Yes	Yes
21	Saipan	459GH	SCBOC	Yes	Yes	No	No
21	Molokai	459QB	SCBOC	Yes	Yes	No	No
21	Merced	570GA	MCBOC	Yes	Yes	Yes	Yes
21	Oakhurst	570GC	SCBOC	Yes	Yes	Yes	Yes
21	Pahrump	593GC	MCBOC	Yes	Yes	Yes	Yes
21	Master Chief Petty Officer Jesse Dean	593GH	MCBOC	Yes	Yes	Yes	Yes
21	Yuba City	612GI	MCBOC	No	No	No	No
21	Yreka	612GJ	SCBOC	No	No	No	No
21	Sierra Foothills	612GK	MCBOC	Yes	Yes	Yes	Yes
21	Capitola	640GA	SCBOC	Yes	Yes	No	No
21	Sonora	640GB	MCBOC	Yes	Yes	No	No
21	Fremont	640GC	MCBOC	Yes	Yes	No	No
21	Carson Valley	654GB	MCBOC	Yes	Yes	Yes	Yes
21	Lahontan Valley	654GC	MCBOC	Yes	Yes	Yes	Yes
21	Diamond View	654GD	SCBOC	Yes	Yes	Yes	Yes
21	Capitol Hill	654QB	MCBOC	No	No	No	No
21	Winnemucca	654QC	SCBOC	Yes	Yes	Yes	Yes
21	Eureka	662GC	MCBOC	No	No	No	No
21	Ukiah	662GD	MCBOC	Yes	Yes	No	No
21	San Bruno	662GE	MCBOC	No	No	No	No
21	San Francisco	662GF	MCBOC	No	No	No	No
21	Clearlake	662GG	MCBOC	No	No	No	No
22	Las Vegas	501G2	SCBOC	Yes	Yes	No	No
22	Artesia	501GA	MCBOC	Yes	Yes	No	No
22	Farmington	501GB	MCBOC	Yes	Yes	No	No
22	Silver City	501GC	SCBOC	Yes	Yes	No	No
22	Gallup	501GD	SCBOC	Yes	Yes	No	No
22	Espanola	501GE	SCBOC	Yes	Yes	No	No
22	Truth or Consequences	501GH	SCBOC	Yes	Yes	No	No
22	Alamogordo	501GI	MCBOC	Yes	Yes	No	No
22	Durango	501GJ	MCBOC	Yes	Yes	No	No
22	Santa Fe	501GK	MCBOC	Yes	Yes	No	No
22	Northwest Metro	501GM	MCBOC	Yes	Yes	Yes	Yes
22	Taos	501GN	SCBOC	Yes	Yes	No	No
22	Raton	501HB	SCBOC	Yes	Yes	No	No
22	Anaheim	600GA	MCBOC	No	No	No	No
22	Cabrillo	600GC	SCBOC	No	No	No	No
22	Santa Fe Springs	600GD	MCBOC	No	No	No	No
22	Laguna Hills	600GE	MCBOC	No	No	No	No
22	Gardena	600GF	MCBOC	No	No	No	No

VISN	Facility Name	Station Number	Facility Type	PCMHI Services	Co-located Collaborative Care	Care Management	Both CCC and CM
22	Corona	605GD	MCBOC	Yes	Yes	Yes	Yes
22	Show Low	644GB	MCBOC	Yes	Yes	No	No
22	Payson	644GD	SCBOC	Yes	Yes	No	No
22	Globe	644GF	SCBOC	Yes	Yes	No	No
22	Northeast Phoenix	644GG	MCBOC	Yes	Yes	Yes	Yes
22	Kingman	649GA	MCBOC	Yes	Yes	No	No
22	Flagstaff	649GB	MCBOC	Yes	Yes	No	No
22	Lake Havasu City	649GC	MCBOC	Yes	Yes	No	No
22	Anthem	649GD	MCBOC	Yes	Yes	No	No
22	Cottonwood	649GE	MCBOC	Yes	Yes	No	No
22	Imperial Valley	664GA	MCBOC	Yes	No	Yes	No
22	Casa Grande	678GC	MCBOC	Yes	Yes	No	No
22	Safford	678GD	SCBOC	Yes	Yes	No	No
22	Green Valley	678GE	MCBOC	Yes	Yes	No	No
22	Southeast Tucson	678GG	MCBOC	Yes	Yes	No	No
22	Santa Barbara	691GB	MCBOC	No	No	No	No
22	East Los Angeles	691GF	MCBOC	No	No	No	No
22	San Luis Obispo	691GK	MCBOC	Yes	Yes	Yes	Yes
22	San Gabriel Valley	691GP	MCBOC	Yes	Yes	Yes	Yes
23	Grafton	437GA	SCBOC	No	No	No	No
23	Bismarck	437GB	MCBOC	No	No	No	No
23	Fergus Falls	437GC	MCBOC	No	No	No	No
23	Minot	437GD	MCBOC	No	No	No	No
23	Bemidji	437GE	MCBOC	No	No	No	No
23	Williston	437GF	SCBOC	No	No	No	No
23	Grand Forks	437GI	MCBOC	No	No	No	No
23	Dickinson	437GJ	SCBOC	No	No	No	No
23	Jamestown	437GK	SCBOC	No	No	No	No
23	Devils Lake	437GL	SCBOC	No	No	No	No
23	North Fargo	437QA	SCBOC	No	No	No	No
23	Spirit Lake	438GA	MCBOC	No	No	No	No
23	Sioux City	438GC	MCBOC	No	No	No	No
23	Aberdeen	438GD	MCBOC	No	No	No	No
23	Wagner	438GE	SCBOC	No	No	No	No
23	Watertown	438GF	MCBOC	No	No	No	No
23	Pierre	568GB	SCBOC	Yes	Yes	No	No
23	Scottsbluff	568HH	SCBOC	Yes	Yes	No	No
23	Winner	568HP	SCBOC	Yes	Yes	No	No
23	St. James	618GA	SCBOC	No	No	No	No
23	Hibbing	618GB	MCBOC	Yes	Yes	Yes	Yes
23	Chippewa Valley	618GE	MCBOC	Yes	Yes	Yes	Yes
23	Hayward	618GH	SCBOC	Yes	Yes	Yes	Yes
23	Shakopee	618GJ	MCBOC	Yes	No	Yes	No
23	Albert Lea	618GK	MCBOC	No	No	No	No
23	Minneapolis	618GL	MCBOC	Yes	Yes	Yes	Yes
23	Rice Lake	618GM	MCBOC	Yes	Yes	Yes	Yes
23	Lyle C. Pearson Community Based Outpatient	618GN	MCBOC	No	No	No	No
23	Ely	618QB	SCBOC	Yes	Yes	Yes	Yes
23	Norfolk	636GA	MCBOC	Yes	No	Yes	No
23	North Platte	636GB	MCBOC	Yes	Yes	Yes	Yes
23	Mason City	636GC	MCBOC	No	No	No	No
23	Marshalltown	636GD	MCBOC	No	No	No	No
23	Quincy	636GG	MCBOC	Yes	Yes	Yes	Yes
23	Waterloo	636GH	MCBOC	Yes	Yes	Yes	Yes
23	Lane A. Evans	636GI	MCBOC	Yes	Yes	Yes	Yes

VISN	Facility Name	Station Number	Facility Type	PCMHI Services	Co-located Collaborative Care	Care Management	Both CCC and CM
23	Dubuque	636GJ	MCBOC	Yes	No	Yes	No
23	Fort Dodge	636GK	MCBOC	No	No	No	No
23	Carroll	636GM	MCBOC	No	No	No	No
23	Shenandoah	636GP	MCBOC	No	No	No	No
23	Holdrege	636GQ	SCBOC	Yes	Yes	Yes	Yes
23	Knoxville	636GR	MCBOC	No	No	No	No
23	Ottumwa	636GS	MCBOC	No	No	No	No
23	Sterling	636GT	MCBOC	Yes	Yes	Yes	Yes
23	Decorah	636GU	MCBOC	No	No	No	No
23	Burlington	636GY	SCBOC	No	No	No	No
23	Montevideo	656GB	MCBOC	Yes	Yes	Yes	Yes
23	Max J. Beilke	656GC	MCBOC	Yes	Yes	Yes	Yes

Definitions

Presence of PCMHI Services:

Yes - Reports PCMHI services in-person and/or provided by virtual face-to-face via video telehealth (VTEL) by staff based on-site or off-site and/or by VA Video Connect (VVC) by staff based on-site or off-site and/or by telephone by staff based on-site. **No** - Reports PCMHI services delivered exclusively by telephone by PCMHI staff based at another site or no PCMHI services available at the site.

Co-located Collaborative Care (CCC):

Yes - Reports in-person CCC services by prescribing psychiatric provider(s) and/or behavioral health provider(s), including services provided by virtual face-to-face care via video telehealth [VTEL] or VA Video Connect [VVC]. **No** - Reports “no”/“do not know” for both co-located prescribers and behavioral health providers.

Care Management (CM):

Yes - Reports on-site CM services or the receipt of CM services from an off-site location. **No** - Reports “no” or “do not know” for both on-site CM services and the receipt of CM services from an off-site location.

Both CCC and CM:

Yes - Yes for CCC and CM (as defined above). **No** - No for CCC or No for CM (as defined above).

To: Tamara Campbell, Clifford Smith, Ira Katz
From: John McCarthy, Ben Szymanski, Brittany Cornwell
Re: VHA Primary Care-Mental Health Integration Services as of 2/1/2022
Date: 6/15/2022

This document presents for your review select information from the 2022 PACT PCMHI Evaluation Program Assessments. Specifically, we provide assessment reports regarding the presence and components of PACT PCMHI services in VHA facilities, as indicated by site responses regarding services as of February 1st, 2022. We also provide information regarding total PCMHI encounters during January through March 2022 (Fiscal Year 2022 Quarter 2).

A total of 455 Veterans Affairs Medical Center (VAMC) divisions with primary care clinics and Community Based Outpatient Clinics (CBOCs) serving at least 5,000 patients were assessed from 2/24/2022 to 5/4/2022. These sites are required to provide onsite PCMHI services. In a briefer assessment, we assessed services at 605 CBOCs serving fewer than 5,000 patients, which are not required to provide PCMHI.

With thanks to the VISNs, facilities, and all respondents, the assessment had a 100% response rate. This represents an enormous accomplishment for VA, and our 13th year in a row with a 100% response.

Among PCMHI required sites, 97.6% of VAMC divisions, 99.1% of Very Large CBOCs (serving 10,000+ patients), and 95.4% of Large CBOCs (serving 5,000 – 9,999 patients) reported having PCMHI services as of February 1st, 2022. One fifth of sites (20.7%) did not include one or both mandated PCMHI components. Program assessment reports document stable availability of Co-located Collaborative Care and Care Management services. Implementation of Care Management remains notably incomplete.

Among small and medium CBOCs, 65.9% of Medium CBOCs (serving 1,500 – 4,999 patients) and 61.6% of Small CBOCs (serving fewer than 1,500 patients) reported having PCMHI services as of February 1st, 2022. Over 60% of these sites did not include one or both mandated PCMHI components. Care Management was frequently absent at small and medium CBOCs, with 58% of these sites reporting not having Care Management services.

Based on our contacts with sites and extensive validation, we believe that site reports accurately reflect the substantial variability in PCMHI implementation and trends over time. Table 1 presents two indicators regarding the absence of PCMHI services, one based solely on self-reports and the other applying information regarding minimal PCMHI encounter volume.

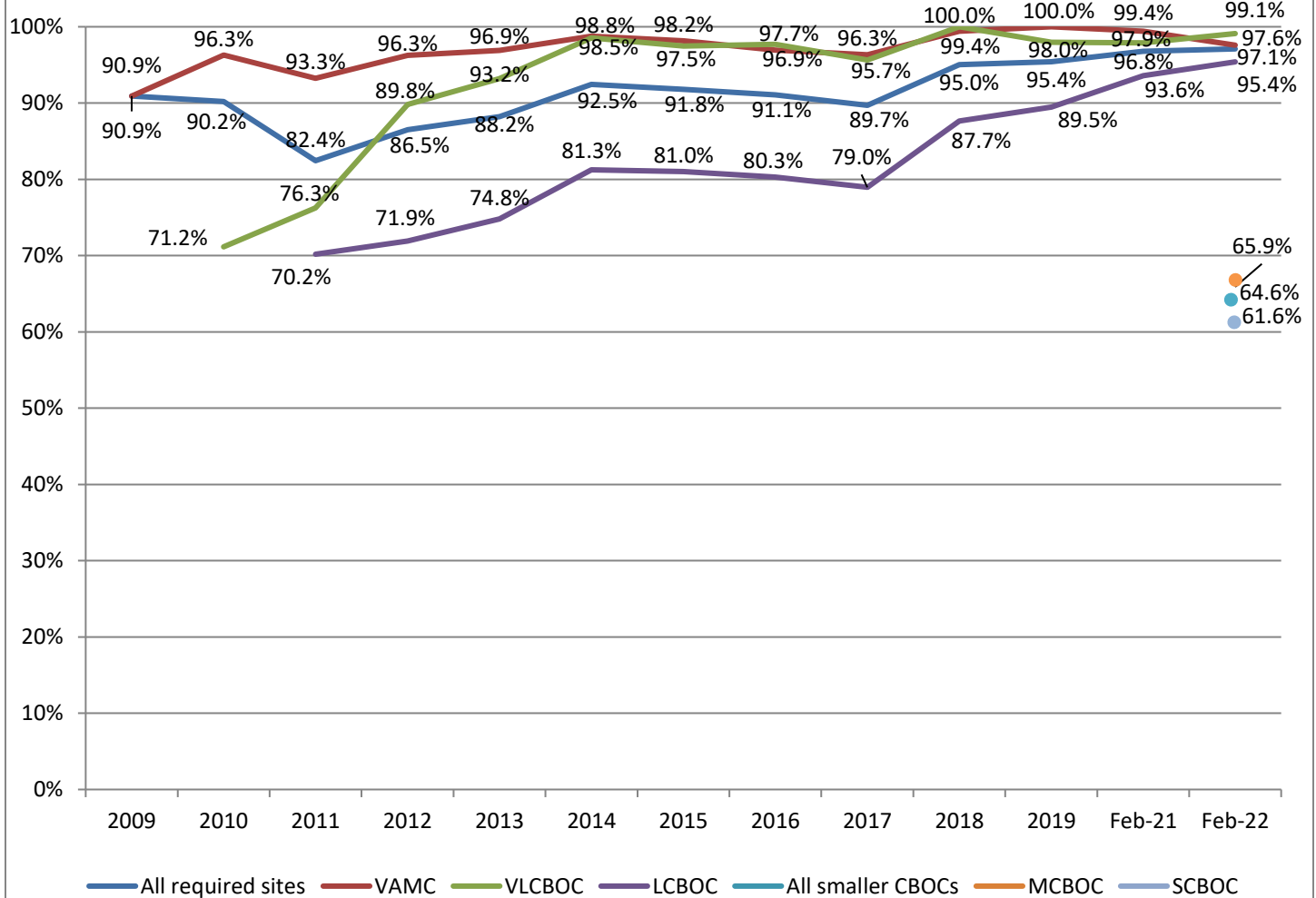
➤ Key Findings, Required Sites:

- Of the 455 VAMCs, VLCBOCs, and LCBOCs assessed, 97.1% (442 divisions) reported having PCMHI services available in-person or provided by virtual face-to-face via video telehealth (VTEL) or VA Video Connect (VVC). This reflects an increase from 96.8% in 2021 (422 of 436 divisions) and an increase from 95.4% in 2019 (414 of 434 divisions).
- 95.4% (434 divisions) reported PCMHI services that included Co-located Collaborative Care (CCC), down from 95.6% (417 divisions) in 2021 and up from 94.2% (409 divisions) in 2019.
- 80.7% (367 divisions) reported PCMHI services that included Care Management (CM), up from 80.3% (350 divisions) in 2021 and up from 78.8% (342 divisions) in 2019.
- 79.3% (361 divisions) reported having both required service components, Co-located Collaborative Care (CCC) and Care Management (CM). This was a *slight decrease* from 79.4% (346 divisions) in 2021 and an increase from 77.6% (337 divisions) in 2019.
- 2.9% (13 divisions) reported NOT having PCMHI services.
- 3.7% (17 divisions) reported having PCMHI services yet did not have documented PCMHI encounters in FY22Q2, and 5.1% (23 divisions) reported services yet had only 15 or fewer encounters.

➤ Key Findings, Smaller CBOCs:

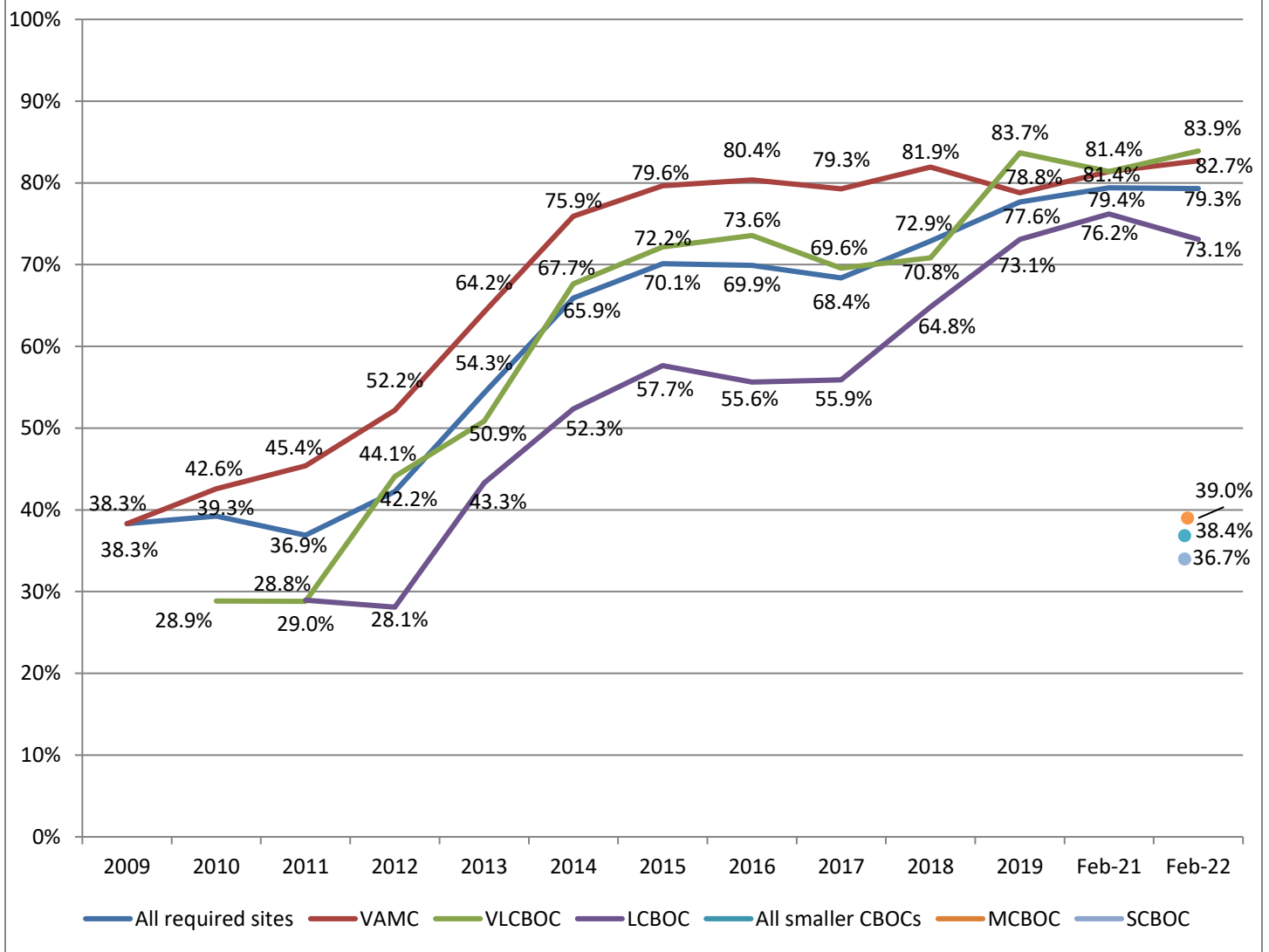
- Of the 605 SCBOCs and MCBOCs assessed, 64.6% (391 divisions) reported having PCMHI services available in-person or provided by virtual face-to-face via video telehealth (VTEL) or VA Video Connect (VVC).
- 60.8% (368 divisions) reported PCMHI services that included Co-located Collaborative Care (CCC).
- 41.7% (252 divisions) reported PCMHI services that included Care Management (CM).
- 38.4% (232 divisions) reported having both required service components, Co-located Collaborative Care (CCC) and Care Management (CM).
- 35.4% (214 divisions) reported NOT having PCMHI services.
- 24.6% (149 divisions) reported having PCMHI services yet did not have documented PCMHI encounters in FY22Q2, and 36.7% (222 divisions) reported services yet had only 15 or fewer encounters.

Figure 1. Reported Prevalence of PCMHI Services, Overall and by Site Type, 2009-2019, Feb 2021, Feb 2022



Note: Very Large CBOCs (VLCBOCs) were first assessed in 2010, Large CBOCs (LCBOCs) in 2011, and Small (SCBOCs) and Medium CBOCs (MCBOCs) in Feb-22.

Figure 2. Prevalence of having both CCC and CM, Overall and by Site Type, 2009-2019, Feb 2021, Feb 2022



Note: Very Large CBOCs (VLCBOCs) were first assessed in 2010, Large CBOCs (LCBOCs) in 2011, and Small (SCBOCs) and Medium CBOCs (MCBOCs) in Feb-22.

Table 1. Findings from 2022 PACT PCMH Program Assessment: Reported absence of PCMH services or components

	All required sites (N=455)		VAMC divisions (N=168)		Very Large CBOCs (N=112)		Large CBOCs (N=175)		All smaller CBOCs (N=605)		Medium CBOCs (N=428)		Small CBOCs (N=177)	
Absence of PCMH services¹	13	2.9%	4	2.4%	1	0.9%	8	4.6%	214	35.4%	146	34.1%	68	38.4%
Absence of Co-located Collaborative Care² (CCC)	21	4.6%	4	2.4%	2	1.8%	15	8.6%	237	39.2%	164	38.3%	73	41.2%
Absence of Care Management³ (CM)	88	19.3%	29	17.3%	17	15.2%	42	24.0%	353	58.4%	246	57.5%	107	60.5%
Absence of one or both mandated components⁴ (CCC and CM)	94	20.7%	29	17.3%	18	16.1%	47	26.9%	373	61.7%	261	61.0%	112	63.3%
Absence of PCMH¹ per Feb 2022 assessment <i>or</i> having 0 documented PCMH encounters FY22Q2	30	6.6%	6	3.6%	2	1.8%	22	12.6%	363	60.0%	236	55.1%	127	71.8%

¹ Includes 3 required sites and 18 small/medium CBOCs that reported off-site only PACT PCMH services. Absence of PCMH services was reported if the respondent indicated that PCMH services were delivered exclusively from an off-site location by phone or no PCMH services were available at the site.

² Absence of CCC services was reported if the respondent indicated “no” or “do not know” for having co-located collaborative care services (services provided via telehealth [VTEL] or VA video connect [VVC] were not flagged as absence of CCC).

³ Absence of CM services was reported if the respondent indicated “no” or “do not know” for both on-site CM services and the receipt of CM services from an off-site location.

⁴ Absence of both CCC and CM services was reported if the respondent was flagged as not having CCC and/or not having CM services, per the definitions above.

Table 2. Findings from 2022 PACT PCMHI Program Assessment: Reported presence of PCMHI services or components

	All required sites (N=455)	VAMC divisions (N=168)	Very Large CBOCs (N=112)	Large CBOCs (N=175)	All smaller CBOCs (N=605)	Medium CBOCs (N=428)	Small CBOCs (N=177)
Presence of PCMHI services¹	442 97.1%	164 97.6%	111 99.1%	167 95.4%	391 64.6%	282 65.9%	109 61.6%
Presence of Co-located Collaborative Care² (CCC)	434 95.4%	164 97.6%	110 98.2%	160 91.4%	368 60.8%	264 61.7%	104 58.8%
Presence of Care Management³ (CM)	367 80.7%	139 82.7%	95 84.8%	133 76.0%	252 41.7%	182 42.5%	70 39.6%
Presence of both mandated components⁴ (CCC and CM)	361 79.3%	139 82.7%	94 83.9%	128 73.1%	232 38.4%	167 39.0%	65 36.7%

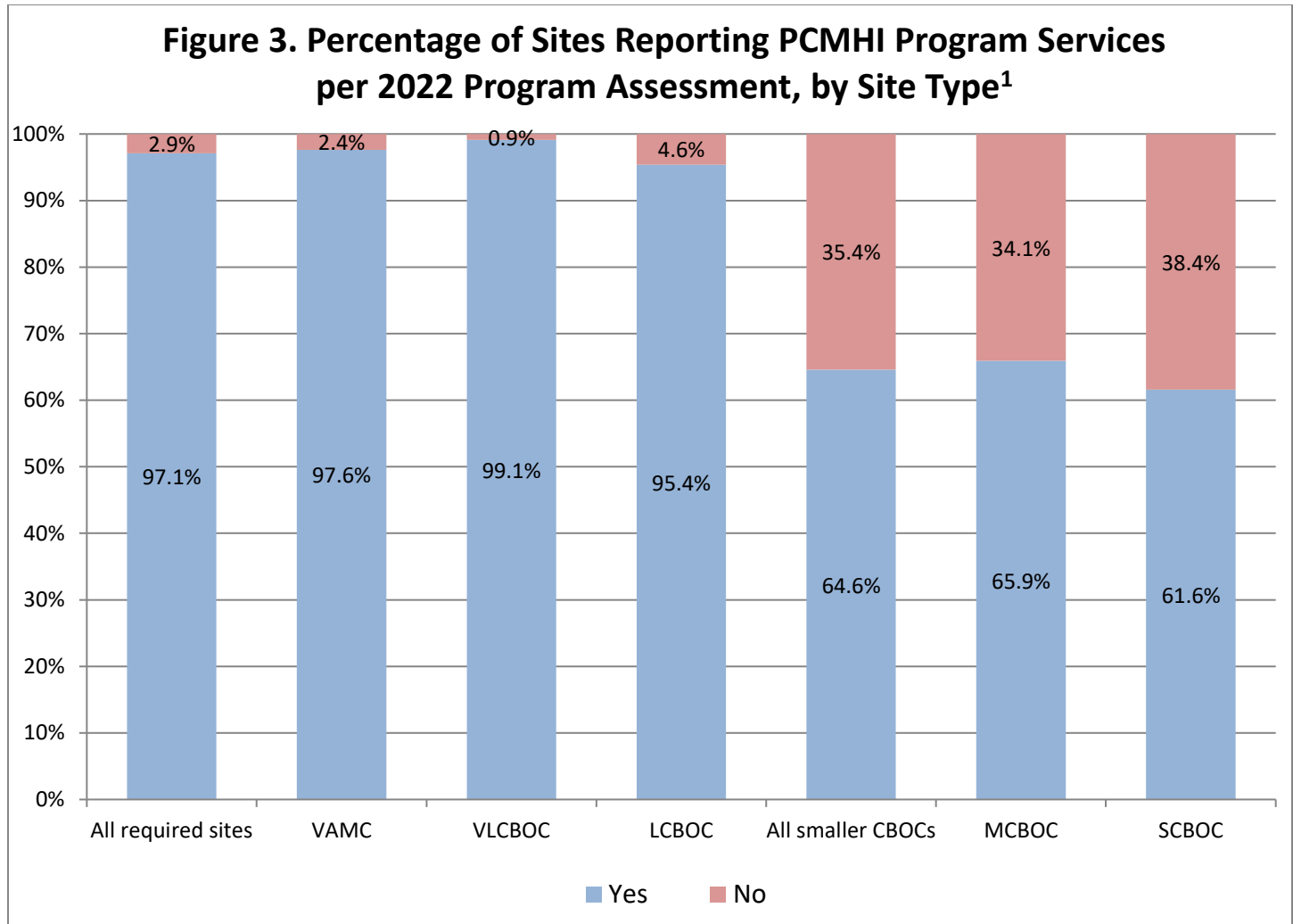
¹ Presence of PCMHI services was reported if the respondent indicated that PCMHI services were available in-person and/or provided by virtual face-to-face via video telehealth (VTEL) or VA video connect (VVC) by staff based on-site or off-site and/or by phone by staff based on-site.

² Presence of CCC services was reported if the respondent indicated that “PCMHI services include co-located collaborative care delivered by PACT PCMHI providers” (includes video telehealth [VTEL], VA video connect [VVC], and phone services by staff based on-site).

³ Presence of CM services was reported if the respondent indicated that “PCMHI care management services provided by staff located on-site” or “PCMHI care management services delivered only from an off-site location”.

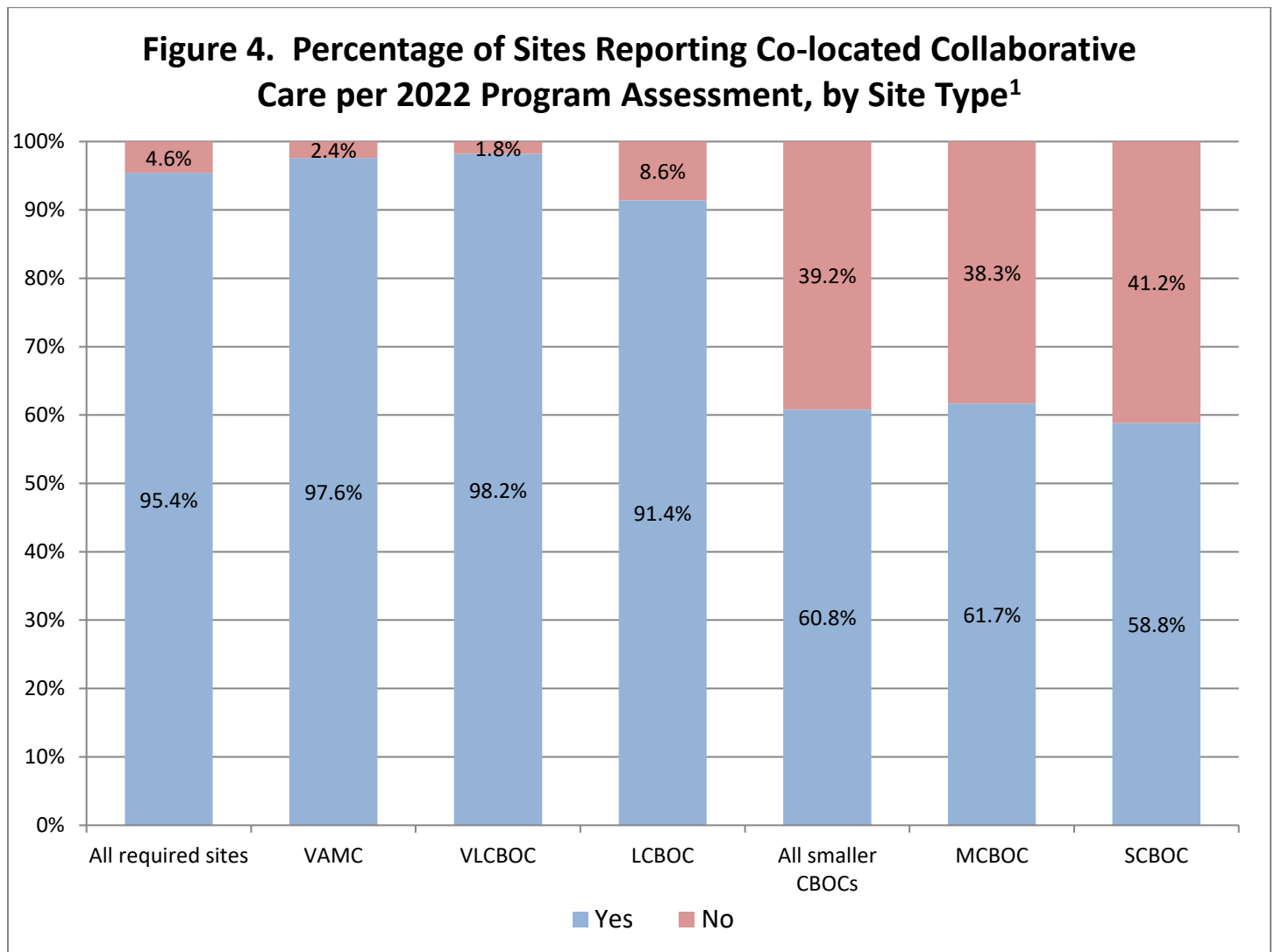
⁴ Presence of both CCC and CM services was reported if the respondent was flagged as having CCC AND having CM services, per the definitions above.

Of the 455 required sites, 97.1% (442 divisions) reported having PCMHI services available. Of the 605 smaller CBOCs, 64.6% (391 CBOCs) reported having PCMHI services available.



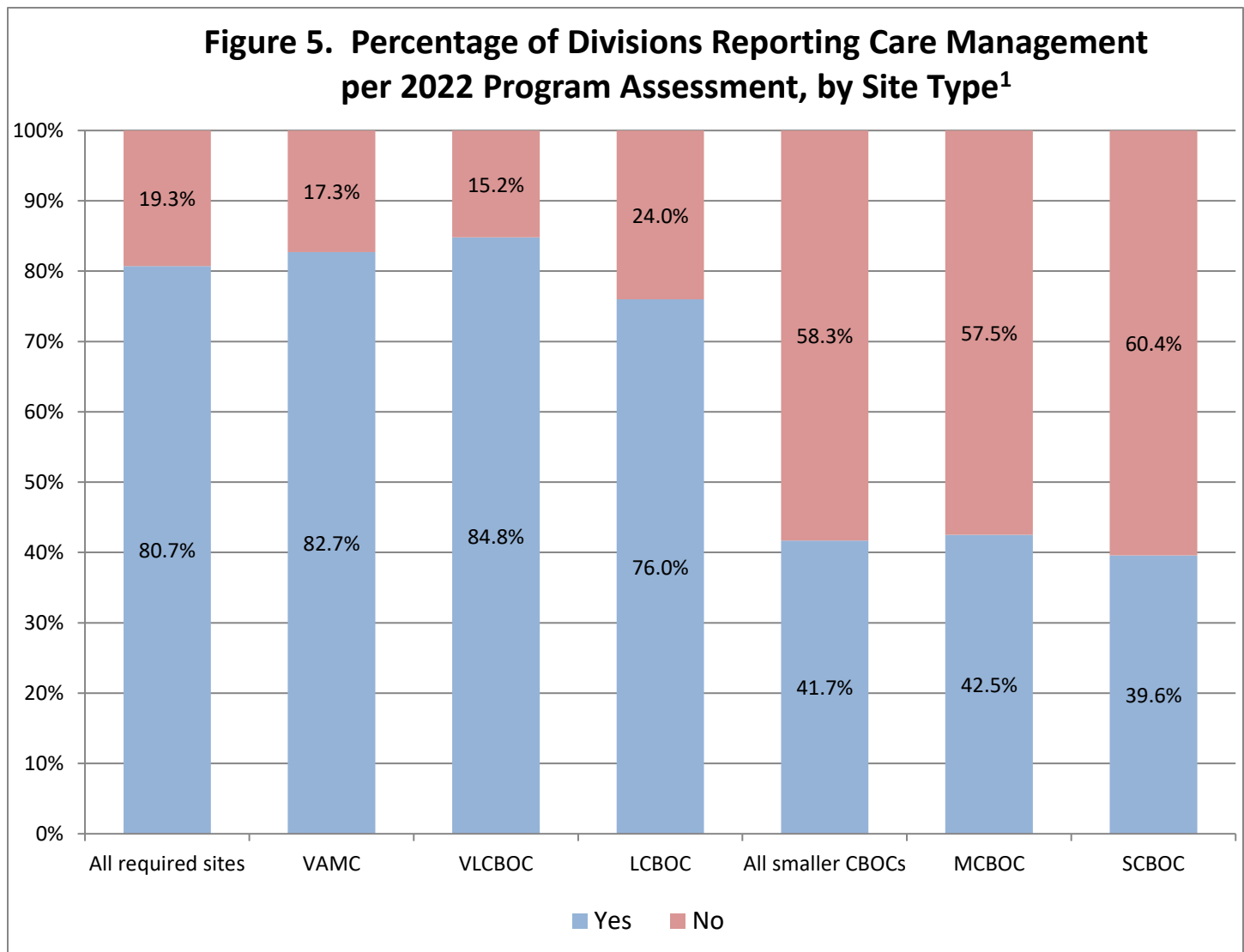
¹ Presence of PCMHI services was reported if the respondent indicated that PCMHI services were available for PACT PC clinics at this site, in-person and/or provided by virtual face-to-face via video telehealth (VTEL) or VA video connect (VVC) and/or by phone by staff based on-site.

Among the 455 required sites, 95.4% (434 divisions) reported PCMHI services that included Co-located Collaborative Care (CCC). Among the 605 small and medium CBOCs, 60.8% (368 divisions) reported PCMHI services that included Co-located Collaborative Care (CCC).



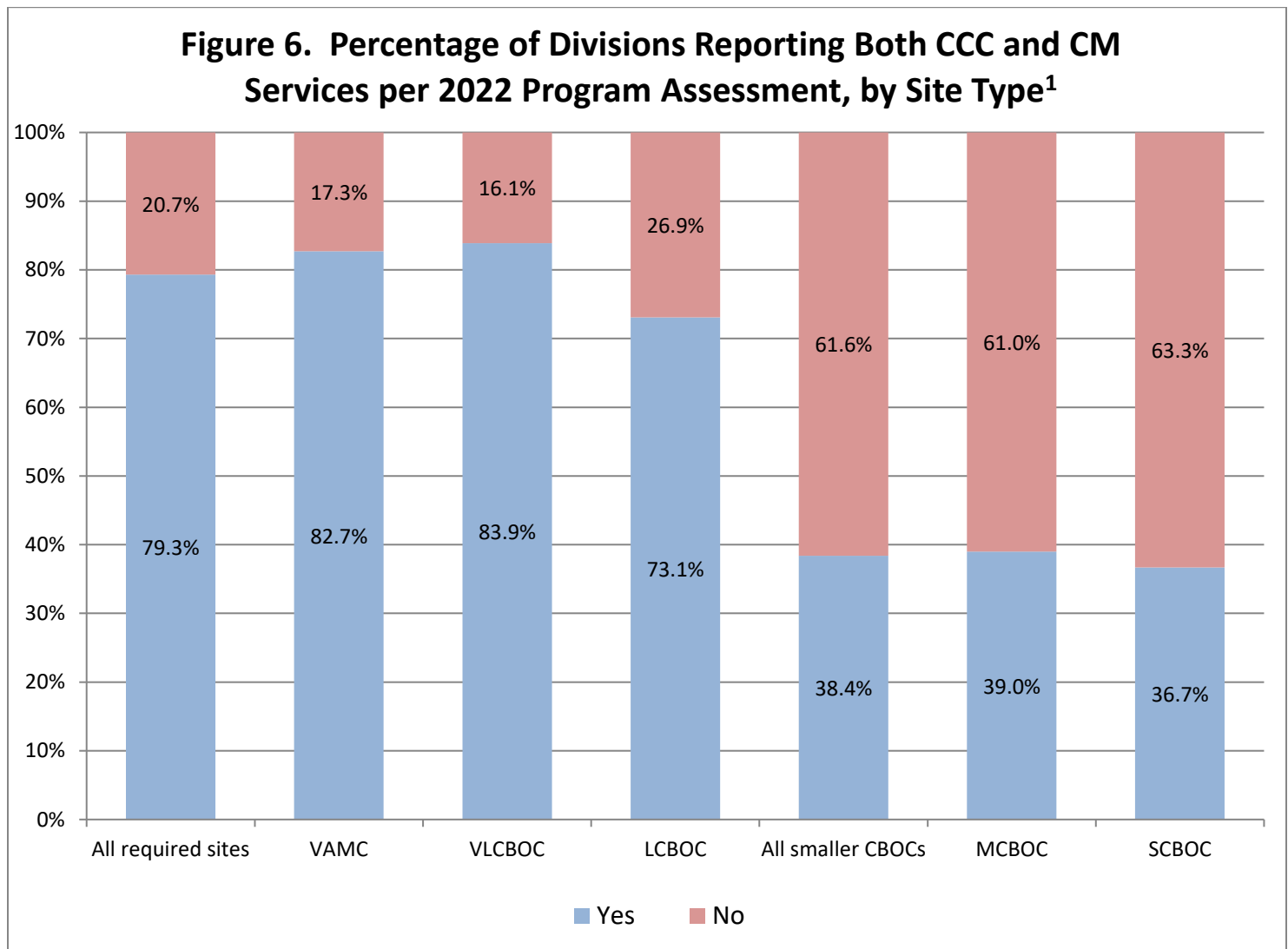
¹ Presence of co-located collaborative care (CCC) is reported as "Yes" if the respondent indicated "co-located collaborative care delivered in-person (in-person includes PACT PCMHI services provided by virtual face-to-face care via video telehealth [VTEL] or VA video connect [VVC])".

Among the 455 required sites, 80.7% (367 divisions) reported PCMHI services that included Care Management (CM). Among the 605 small and medium CBOCs, 41.7% (252 divisions) reported PCMHI services that included Care Management (CM).



¹Presence of care management (CM) services was reported as “Yes” if the respondent indicated “Yes, care management provided by staff located on-site” or “care management delivered only from an off-site location”. Otherwise, it is reported as “No”.

Among the 455 required sites, 79.3% (361 divisions) reported having both required service components, Co-located Collaborative Care (CCC) and Care Management (CM). Among the 605 small and medium CBOCs, 38.4% (232 divisions) reported having both service components.



¹Presence of both CCC and CM services is reported as “Yes” if the respondent indicated “co-located collaborative care delivered in-person (in-person includes PACT PCMHI services provided by virtual face-to-face care via video telehealth [VTEL] or VA video connect [VVC])” AND if the respondent indicated that “PCMHI services at this site include CM” or “this site receives PCMHI CM services from an off-site location”. Otherwise, it is reported as “No”.

➤ **Summary of Changes from February 2021 to February 2022, *required sites***

Sample: Sites required to provide PCMHI services that were included in the 2022 PACT PCMHI Evaluation Program Assessment, fielded February 24th, 2022, through May 4th, 2022, regarding services available as of February 1st, 2022, included 455 sites comprised of:

- 168 VAMC divisions
- 112 Very Large CBOCs (defined as 10,000 + unique patients) and
- 175 Large CBOCs (defined as 5,000 to 9,999 unique patients).

Number of sites assessed:

Sites assessed both years (N = 429)

(Specific divisions not listed)

Sites assessed in Feb 2021 but not Feb 2022 (n = 7)

Fredericksburg (V06, 652GA), Florence (V10, 539GD), Cape Girardeau (V15, 657GH), Fort Collins (V19, 442GC), Denver (V19, 554GJ), Bellevue (V20, 663GA), Northwest Metro (V22, 501GM)

Sites assessed in Feb 2022 but not Feb 2021 (n = 26)

New London (V01, 689HC), Binghamton (V02, 528GN), Sussex County (V04, 460GA), Kent County (V04, 460GC), Franklin (V06, 637GA), Henrico County (V06, 652GC), Massaponax (V06, 652GI), Northeast Cobb County (V07, 508GO), Albany (V07, 557GB), Perry (V07, 557HA), Sebring (V08, 516GH), Lake City (V08, 573QK), Clermont (V08, 675GF), Bloomington (V10, 583GB), Oak Lawn (V12, 578GG), Waynesville (V15, 589GF), St. Clair County (V15, 657GA), St. Louis County (V15, 657GB), St. Charles County (V15, 657GD), Washington Avenue (V15, 657GX), Miles City (V19, 436A4), Richland (V20, 687GA), North Reno (V21, 654GF), Antelope Valley (V22, 691GG), Rochester (V23, 618GG), Cedar Rapids (V23, 636GN)

Among sites assessed in Feb 2021 and Feb 2022:

Reporting a PCMHI program:

- **5 Sites** that had reported **having** a PCMHI program in 2021 reported **not having** a PCMHI program in 2022.
- + **8 Sites** that had reported **not having** a PCMHI program in 2021 reported **having** a PCMHI program in 2022.

Having more than 15 PCMHI encounters in one quarter:

- **9 Sites** that had **more than 15** PCMHI encounters in FY21Q1 had **15 or fewer** PCMHI encounters in FY22Q2.
- + **3 Sites** that had **15 or fewer** PCMHI encounters in FY21Q1 had **more than 15** PCMHI encounters in FY22Q2.

Presence of Co-located Collaborative Care:

- **8 Sites** that had reported **having CCC** in 2021 reported **not having CCC** in 2022.
- + **8 Sites** that had reported **not having CCC** in 2021 reported **having CCC** in 2022.

Presence of Care Management:

- **28 Sites** that had reported **having CM** in the 2021 reported **not having CM** in 2022.
- + **37 Sites** that had reported **not having CM** in 2021 reported **having CM** in 2022.

Presence of both Co-located Collaborative Care and Care Management:

- **28 Sites** that had reported **having both CCC and CM** in 2021 reported **not having both CCC and CM** in 2022.
- + **35 Sites** that had reported **not having both CCC and CM** in 2021 reported **having both CCC and CM** in 2022.

➤ **Guide to Spreadsheet, “PCMHI Services 2022 Program Assessment Site Detail”:**

In the accompanying spreadsheet, the tabs contain the information as follows, for the 455 VAMCs, very large, and large CBOCs:

The **"All Sites"** worksheet shows information for all sites receiving the program assessment, including information regarding reported presence of Co-located Collaborative Care (CCC) and Care Management (CM) services.

The **"No Services Reported or <15 Enc"** tab is limited to those 36 sites that reported no PCMHI services or that had 15 or fewer PCMHI encounters in FY2022 Q2.

The **"Report Services but <15 Enc"** worksheet is a list of those 23 sites that reported PCMHI services yet had 15 or fewer PCMHI encounters in FY2022 Q2.

The **"Compare Years"** tab presents information from sites that were assessed regarding PCMHI services in 2011 through 2019, Feb 2021, and Feb 2022, and it highlights changes in reporting. We also provide PCMHI encounter volume and prevalence of receipt of PCMHI for the time period closest to the assessment date. Note that not all sites were required to complete assessments in all years.

The **"Key Findings – 2011 to 2022"** tab shows tables with results from each year of the program assessment for 2011-2019, Feb 2021, and 2022, as well as the PCMHI encounters for the quarter closest to each assessment date.

For the **"All Sites"**, **"No Services Reported or <15 Enc"**, and **"Report Services but <15 Enc"** tabs:

Pink highlights in these worksheets indicate no or little PCMHI services as of 2/1/2022. This may be because of: 1) program assessment reports that PCMHI services were not available, 2) assessment reports that co-located collaborative care services were not available, 3), assessment reports that care management services were not available, 4) assessment reports that both CCC and CM were not available, or 5) having 15 or fewer PCMHI Encounters in FY22Q2 (1/1/2022 - 3/31/2022).

➤ **Notes:**

The sample of VAMC divisions was limited to those that operated primary care clinics.

CBOC size was determined by FY2021 "core uniques" data from VSSC Uniques Cube.

PCMHI Encounters: PCMHI encounters were determined from the Outpatient Encounter data in CDW for the period FY22 Q2 using stop codes 534 and 539 in the primary or secondary stop code positions.

Presence of Program Components:

Presence of PCMHI services was reported as "Yes" if the respondent indicated that PCMHI services were available in-person and/or provided by virtual face-to-face via video telehealth (VTEL) or VA video connect (VVC) by staff based on-site or off-site and/or by phone by staff based on-site. Presence of PCMHI services was reported as "No" if the respondent indicated that PCMHI services were delivered exclusively from an off-site location by phone or that no PCMHI services were available.

Presence of co-located collaborative care (CCC) is reported as "Yes" if the respondent indicated "PCMHI services include co-located collaborative care delivered by PACT PCMHI providers" (includes video telehealth [VTEL], VA video connect [VVC], and phone services by staff based on-site). Presence of co-located collaborative care is reported as "No" if the respondent indicated "no" or "do not know" for having co-located collaborative care services.

Presence of care management (CM) is reported as "Yes" if the respondent indicated "PCMHI care management services were provided by staff located on-site" or "PCMHI care management services were delivered only from an off-site location". Presence of CM is reported as "No" if the respondent indicated having neither on-site CM services nor CM services from an off-site location.

Presence of both CCC and CM at a site was determined by positive answers to both the above items asking if CCC services were offered (including via telehealth [VTEL], VA video connect [VVC] and on-site phone services) AND if CM services were offered (on-site or off-site).